

Mon Feb. 13



One Theme

Richard A. Rowland
presents
"THE PRIVATE LIFE OF HELEN OF TROY"
by John Erskine
with
LEWIS STONE, MARIE CORDA and RICARDO CORTÉZ
Compiled by James C. Bradford
A First National Picture

1 AT SCREENING Cortège (Lowitz) 1 Min.

Alla Marcia.

Copyright 1927 G. Schirmer, Inc.

2 (Title) EVERYBODY IS INTERESTED IN On A Woodland Glade (Ray) ¾ Min.

And^{te} mod^{to} vivo loco

Copyright 1926 Carl Fischer, Inc.

3 (Title) IT ALL STARTED Au Desert (Grandjean) ¾ Min.

Ben marcato.

1926 Manus Music

4 (Title) IN THE WHITE HOUSE Gigue (Bradford) 2¾ Min.

Vivace *Agitato Con Moto*

Copyright 1927 Robbins Music Co.

5 (Title) THERE, THERE, DEAR I'm Sorry I Made You Cry (Clesi) 1 Min.

Mod^{to} *I made you happy*

Copyright 1928 Leo Feist, Inc.

6 (Title) ACROSS THE AGEAN SEA Kismet (Henlere) ¾ Min.

All^{to} Mod^{to}

Copyright 1920 Will Roseler.

7 (Action) VALET ENTERS Ye Bold Buccaneer (Copping) 1½ Min.

Marcia Pampaso *Processional*

Copyright 1927 Carl Fischer, Inc.

8 (Action) OFFICER STOPS CHARIOT Big Boy (Ager) ¾ Min.

Mod^{to}

Copyright 1924 1925 Yellen & Barnstein, Inc.

"Even In Ancient Sparta -"

9 (Title) **EVEN IN ANCIENT SPARTA** Men of Sparta (Zamecnik) 2½ Min.

Marziale
Musical notation for 'Even in Ancient Sparta' in G major, 2/4 time, marked 'Marziale'. Copyright 1927 Sam Fox Pub. Co.

10 (Title) **GENERAL ACHILLES** **THEME: Razzing Theme (Rapee)** 1½ Min.

Maestoso
laca
Musical notation for 'General Achilles' in B-flat major, 2/4 time, marked 'Maestoso'. Includes first and second endings. Copyright 1927 Belwin Inc.

11 (Title) **THE QUEEN'S MAID** Diane (Rapee) 1¼ Min.

Valse.
Musical notation for 'The Queen's Maid' in B-flat major, 3/4 time, marked 'Valse.'. Copyright 1927 Sherman & Clay Co.

12 (Title) **THE KING SAYS YOU MUST** Just Like A Butterfly (Woods) 1 Min.

Mod.^{to}
Musical notation for 'The King Says You Must' in B-flat major, 2/4 time, marked 'Mod.'. Copyright 1927 J. H. Remick & Co.

13 (Title) **HERE'S THE DRESSMAKER** Polly (Zamecnik) 1½ Min.

Mod.^{to}
Musical notation for 'Here's the Dressmaker' in G major, 2/4 time, marked 'Mod.'. Copyright 1927 Sam Fox Pub. Co.

14 (Title) **ALL THE DAY** Overture Champetre (Snoek) ¾ Min.

Maestoso.
Composso
Musical notation for 'All the Day' in G major, 2/4 time, marked 'Maestoso.'. Manus music co.

15 (Action) **KING SITS DOWN** I'm Tired (Jerome) 1¼ Min.

Languid
Musical notation for 'King Sits Down' in G major, 2/4 time, marked 'Languid'.

16 (Action) **HELEN APPEARS IN NEW GOWN** Gorgeous (Akst) 2 Min.

Mod.^{to}
Musical notation for 'Helen Appears in New Gown' in B-flat major, 2/4 time, marked 'Mod.'. Copyright 1927 J. H. Remick & Co.

17 (Title) **THE WIFE WANTED TO GO** Mortels Poisons (Fosse) 1¼ Min.

Mod.^{to}
Dream And the 15
Musical notation for 'The Wife Wanted to Go' in B-flat major, 2/4 time, marked 'Mod.'. Copyright 1927 J. Yues.

18 (Title) **INTERMISSION** Fanchonette (Klemm) 1½ Min.

Mod.^{to}
Canzonetta
Musical notation for 'Intermission' in G major, 2/4 time, marked 'Mod.'. Copyright 1927 Belwin Inc.

19 (Title) A SPARTAN DRAMA HAD TWELVE ACTS... Elopement (Carrozzini) 3/4 Min.

Handwritten: *Vivace sva*
Handwritten: *Hurry 3 B.C. 20*
Musical notation for item 19. Copyright 1926 Sonnenschein Music Co.

20 (Title) WASN'T IT A WONDERFUL EVENING Two In A Bar (Copping) 2 Min.

Handwritten: *Tempo di Fogo*
Handwritten: *My Home Sweet Home*
Musical notation for item 20. Copyright 1926 Geo. H. Sanders, Inc.

NOTE: Use the "Home Sweet Home" part only.
21 (Action) HELEN PLACES HER ARMS AROUND KING. Cuddle Closer (Schwartz) 1 1/4 Min.

Handwritten: *Mod^{to}*
Musical notation for item 21. Copyright 1927 Villa Morel, Inc.

22 (Action) KING CLIMBS INTO BED Berceuse Comique (Kilenyi) 1 Min.

Handwritten: *Mod^{to}*
Handwritten: *Lullaby*
Musical notation for item 22. Copyright 1926 Carl Fischer, Inc.

23 (Action) HELEN WALKS TOWARD DOOR One O'Clock Baby (Jolson) 3/4 Min.

Handwritten: *Mod^{to}*
Handwritten: *Night Club Rose*
Musical notation for item 23. Copyright 1927 De Sylva Brown & Henderson, Inc.

24 (Action) KING OUT OF BED—CLOSES DOOR Chatter (Kahn) 3/4 Min.

Handwritten: *All^o*
Handwritten: *Chatter*
Musical notation for item 24. Copyright 1926 Sonnenschein Music Co.

25 (Title) HUSBANDS DON'T GET HOME Could I? (Ager) 1 1/4 Min.

Handwritten: *Mod^{to}*
Musical notation for item 25. Copyright 1926 Ager, Jelen & Bornstein, Inc.

26 (Action) KING ENTERS Baby Face (Akst) 1 Min.

Handwritten: *Mod^{to}*
Musical notation for item 26. Copyright 1926 J. H. Remick & Co.

27 (Title) AND SO THE QUEEN FOUND Adorable (Wynburn) 1 Min.

Handwritten: *Mod^{to}*
Handwritten: *Isn't She the Sweetest Thing*
Musical notation for item 27. Copyright 1926 Leo Feist, Inc.

28 (Title) A DARK MAN Don't Wake Me Up (Baer) 1/2 Min.

Handwritten: *Mod^{to} sva*
Musical notation for item 28. Copyright 1925 Leo Feist, Inc.

29 (Action) GENERALS ENTER Repeat Theme No. 10 1 Min.

Handwritten: *Mod^{to}*
Musical notation for item 29. Copyright 1925 Leo Feist, Inc.

30 (Title) BOSS, THIS COUNTRY The Tin Soldier (Cui) 1 Min.

Handwritten: *Tempo di Marcia*
Handwritten: *Mardi Brannon*
Musical notation for item 30. Copyright 1927 G. Schirmer, Inc.

Theme

action

31 (Title) PARIS AND HELEN My Heart At Thy Sweet Voice (St. Saens) 1½ Min.

32 (Action) HELEN HURRIES TOWARD KING..... Someday You'll Say O. K. (Donaldson) ¾ Min.

33 (Action) HELEN RETURNS TO PARIS Two Little Pretty Birds (Tucker) 1 Min.

34 (Action) FLASH-BACK TO OFFICERS Repeat Theme No. 10 ½ Min.

35 (Action) HELEN AND PARIS LOVE MAKING How Could Red Riding Hood (Randolph) ¾ Min.

36 (Title) THE MOST IMPORTANT DATE The Chatterbox (Sanders) 1½ Min.

37 (Action) HELEN AND PARIS ON DIVAN Bye-Bye Pretty Baby (Gardner) ¾ Min.

38 (Title) CAME THE DAWN Cat and Mice (Leonard) 1¼ Min.

39 (Action) THE GENERALS ENTER Repeat Theme No. 10 1 Min.

40 (Title) ALREADY THE PEOPLE OF SPARTA The Destruction of the Temple (Darcieux) 1½ Min.

41 (Title) SPARTA HAS STOOD ENOUGH Repeat No. 9 "Men of Sparta" ½ Min.

42 (Title) IT TAKES A LONG TIME Le Portrait de Nicole (Mouton) ¾ Min.

43 (Title) WAR! HER HUSBAND IS COMING La Folie (Franceschi) 2¾ Min.

Cheers and Tears

Theme

Did you mean it?

I'm looking for it

Punchinello

Mysterious Jumps

Revolutionary March

Jester

All Precipitously

44 (Title) CHEERS AND TEARS Repeat No. 7 "Ye Bold Buccaneer" 1 1/4 Min.

Marcia Pomposo.
Wedding March Pomposo

45 (Title) AND SO HELEN FOUND Notte Misteriosa (Becca) 2 Min.

And^{te} quasi Largo.
copy 1925 Schlesinger.

46 (Action) HELEN ENTERS GENERAL'S TENT Fourteen Fathoms Deep (Lake) 1 1/4 Min.

Mod^{to} s^{ve} - - - - - loco
copy 1917 Carl Fischer Inc.

47 (Action) AJAX KNEELS AT HELEN'S FEET She's Got "It" (Davis) 3/4 Min.

Mod^{to}
copy 1927 Leo Feist Inc.

48 (Title) SO THEY WERE DRAGGED ON Entrance of the Heroes (Herbert) 1 1/4 Min.

Maestoso.
Mourning March
copy 1926 Carl Fischer Inc.

49 (Title) HELEN WANTED THE HORSE Horses (Gay) 2 Min.

Mod^{to}
copy 1926 Leo Feist Inc.

50 (Title) ARMISTICE NIGHT Zip (Frey) 1/2 Min.

Galop
all - to
copy 1925 Robbins music corp.

51 (Title) THE STRATEGY OF MENELAOS Prelude to "Mystery Drama" (Baron) 1 1/2 Min.

And^{te} Mod^{to}
Mist. Burlesque
copy 1928 Irving Berlin

52 (Action) GUARDS RUN Threatening Danger (Becca) 3/4 Min.

And^{te} Largo.
Misterioso lamentoso
copy 1921 Schlesinger.

53 (Action) PARIS APPROACHES BED Imprecations (Baron) 1 1/2 Min.

All^{ro} furioso
Allegro ass. 48
copy 1921 Irving Berlin Inc.

54 (Action) SOLDIERS ENTER GATE Repeat No. 9 "Men of Sparta" 1 1/4 Min.

Marziale
Marche Militaire

55 (Action) DRESSMAKER LOOKS UP Narcissus (Nevin) 3/4 Min.

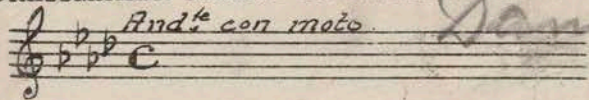
And^{te} con moto.
copy 1920 The Boston music co.

56 (Title) HE LIKES HORSES Repeat No. 49 "Horses" 3/4 Min.

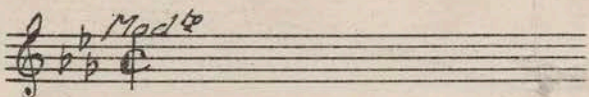
Mod^{to}

D - Dressmaker starts to sweep -

57 (Action) DRESSMAKER STARTS TO SWEEP Repeat No. 55 "Narcissus" ¼ Min.

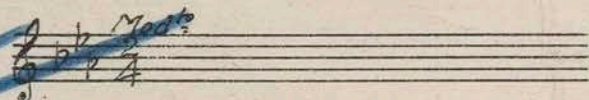


58 (Action) DRESSMAKER LOOKS UP Repeat No. 49 "Horses" ¼ Min.

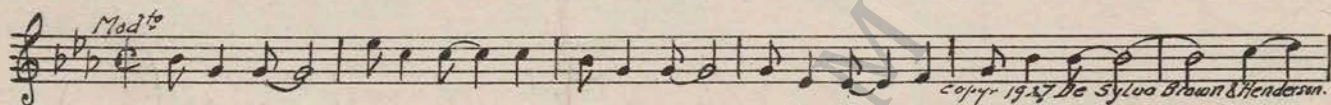


59 (Title) THE LAST TROJAN IS CAPTURED Repeat Theme No. 10 1 Min.

Theme



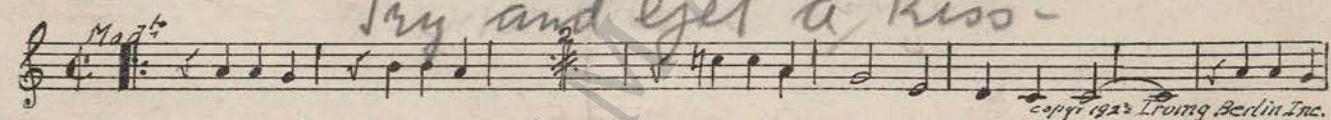
60 (Action) HELEN APPEARS Broken Hearted (Henderson) 1 Min.



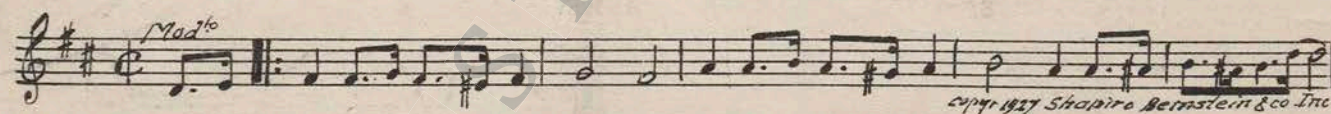
61 (Action) KING OPENS DOOR Cheatin' On Me (Pollack) 1½ Min.



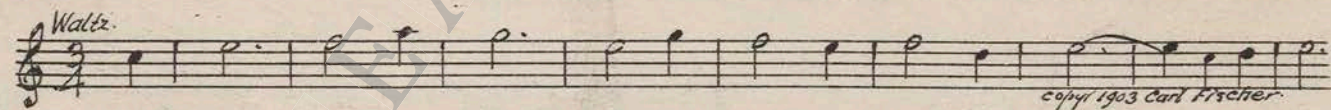
62 (Action) HELEN OPENS CAPE Oh Baby (Donaldson) ½ Min.



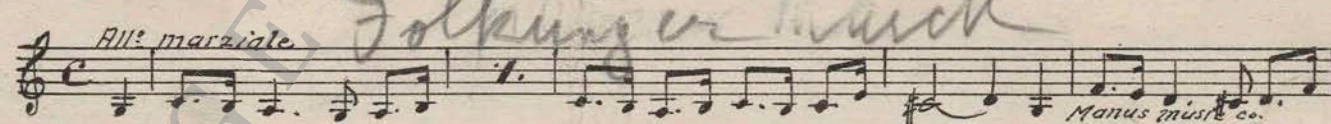
63 (Title) AW, COME ON HELEN Side by Side (Woods) 1 Min.



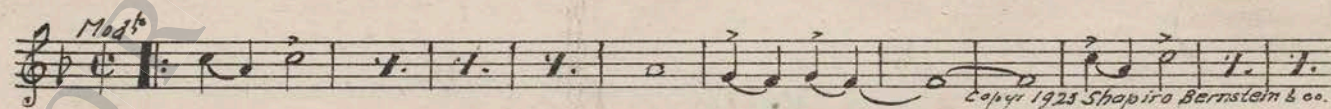
64 (Title) BACK TO NORMALCY Home Sweet Home (Margis-Berger) 1 Min.



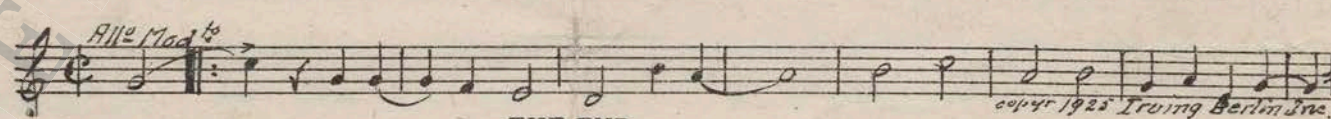
65 (Title) I AM THE PRINCE OF ITHACA Le Serment de Mathurin (Snoek) 1¼ Min.



66 (Action) HELEN ENTERS Oh Boy, What A Girl (Green) 1¼ Min.



67 (Action) PRINCE KISSES HER HAND So That's the Kind of A Girl You Are (Burke) 2 Min.



THE END

Printed in U. S. A.

Complete orchestrations and single piano parts of each separate number contained hereon, can be purchased from CAMEO MUSIC SERVICE CORPORATION, 315-317 WEST 47TH STREET, NEW YORK CITY.

95:2248:1