

M. J. MINTZ (PATENT)  
JULY 21, 1923.

WILLIAM FOX SPECIAL FILM PRODUCTION  
"RILEY THE COP"

Compiled by Michael P. Krueger  
The timing is based on speed of 12 minutes per reel

- 1 AT SCREENING ..... RILEY THEME: The Irish Have a Great Day Tonight  
(Herbert) ..... 1/4 Min.

*Marcia*

Copyright 1917 M. Witmark & Sons

- 2 (Title) FOR TWENTY YEARS ..... Fall In Line (Rosev) ..... 1 1/2 Min.

*March*

Copyright 1904 E. B. Marks

- 3 (Title) IT ISS BY POLICE REGULATIONS ..... KRAUSMEYER THEME: Where Is My Mever? (Profes) 1/2 Min.

*Moderate*

Leo Feist

- 4 (Action) KRAUSMEYER LEAVES RILEY ..... Repeat Riley Theme No. 1 ..... 1 Min.

*Marcia*

- 5 (Action) RILEY GETS ON BOOT BLACK STAND ..... Darkies' Shuffle (Rollinson) ..... 1/2 Min.

*Schottische*

Copyright Oliver Ditson

- 6 (Action) RILEY GETS OFF BOOT BLACK STAND ..... Repeat Riley Theme No. 1 ..... 1/4 Min.

*Marcia*

- 7 (Action) MAN SEEN HOPPING IN BOXES ..... Two In a Bar (Copping) ..... 1/4 Min.

*Slow*

Copyright 1926 G. Schirmer

- 8 (Action) DRUNKARD LEAVES RILEY ..... Repeat Riley Theme No. 1 ..... 1 Min.

*Marcia*

- 9 (Action) RILEY TURNS WATER HYDRANT ON ..... Our Boys and Girls (Ring-Hager) (Play lively) ..... 1/2 Min.

*Lively*

Copyright 1926 Sam Fox

10 (Action) CLOSE-UP OF GIRL ON STAIRWAY ..... LOVE THEME: Pretty Petite and Sweet (Archer).....2¾ Min.

Musical notation for item 10, marked *Moderato*. Copyright 1928 De Sylva, Brown & Henderson.

man at  
window light

11 (Action) RILEY ENTERS BASEMENT ..... Repeat Riley Theme No. 1 ..... 1½ Min.

Musical notation for item 11, marked *Marcia*.

12 (Action) RILEY PUTS PUSH CART ON KRAUSMEYER'S BEAT ..... Repeat Krausmeyer Theme No. 3 ..... ¼ Min.

Musical notation for item 12, marked *Moderato*.

13 (Action) FADE-IN TO GIRL AND BOY ..... Repeat Love Theme No. 10 ..... 2¾ Min.

Musical notation for item 13, marked *Moderato*.

14 (Title) MID-SUMMER WITH MARY ..... Badinage (Herbert) ..... 1 Min.  
NOTE: Start at refrain—when auto drives up, go back to verse and continue on through chorus.

Musical notation for item 14, marked *All.* Copyright Schubert & Co.

what  
about me

15 (Title) IT'S FROM MARY ..... Repeat Love Theme No. 10 ..... 1¼ Min.

Musical notation for item 15, marked *Moderato*.

16 (Action) CHILDREN SEEN PLAYING BASEBALL ..... Take Me Out to the Ball Game (Norworth) ..... ¾ Min.

Musical notation for item 16, marked *Valse*. Copyright Broadway Music Co.

17 (Action) BALL SMASHES WINDOW ..... Gigue (Bradford) ..... 1 Min.

Musical notation for item 17, marked *Vivace*. Copyright 1927 Robbins Music Corp.

allegro

18 (Title) THE AUDITORS REPORT ..... Dramatic Tension (Luscomb) ..... ¾ Min.

Musical notation for item 18, marked *All.* Copyright 1918 Carl Fischer.

Wanam

19 (Action) POSTER OF STEAMSHIP SEEN ..... Lady Of My Heart (Roder) ..... ½ Min.

Musical notation for item 19, marked *Grazioso*. Copyright 1927 Edw. F. Kalmus.

Andante

20 (Action) RILEY, THE COP. SEEN ..... Repeat Riley Theme No. 1 ..... ½ Min.

Musical notation for item 20, marked *Marcia*.

21 (Action) RILEY THROWS BRICK ..... Comedy Allegro (Haines) ..... ½ Min.

Musical notation for item 21, marked *All. vivace*. Copyright 1922 Hawkes & Son.

22 (Action) FADE-IN TO POLICE CAPTAIN'S OFFICE ..... Repeat Riley Theme No. 1 ..... 2¾ Min.

Musical notation for item 22, marked *Marcia*.

spirit of  
youth + Riley Theme

NOTE: When Riley enters Captain's office, play very softly—until Riley shakes Captain's hand.

23 (Title) **MUNICH, GERMANY** ..... Bierwalzer (See) ..... 1 1/4 Min.

Waltz  
Musical notation for Munich, Germany. Copyright: Carl Fischer

24 (Title) **KRAUSMEYER!** ..... Under the Double Eagle (Wagner) (2nd Strain) ..... 1/2 Min.

March  
Musical notation for Krausmeyer!. Copyright: Carl Fischer

where is my meyer

25 (Act. ) **RILEY LEAVES KRAUSMEYER** ..... Repeat Riley Theme No. 1 ..... 1/2 Min.

Mod<sup>to</sup>  
Musical notation for Riley Leaves Krausmeyer.

26 (Action) **RILEY ENTERS PRISON CELL** ..... Tears (Zamecnik) ..... 1 1/4 Min.

Mod<sup>to</sup>  
Musical notation for Riley Enters Prison Cell. Copyright: 1917 Sam Fox

27 (Action) **RILEY AND BOY LEAVE PRISON** ..... Exaltation (Coerne) ..... 1/2 Min.

Mod<sup>to</sup>  
Musical notation for Riley and Boy Leave Prison. Copyright: 1921 Oliver Ditson

same

28 (Action) **BEER BARRELS SEEN** ..... Immer Noch Ein Tropfchen (Hinsch) ..... 2 Min.

Schottische  
Musical notation for Beer Barrels Seen. Copyright: 1914 Emil Fischer

waltz

29 (Title) **ALL MY LIFE I'VE BEEN SEARCHING** ..... Down Deep In An Irishman's Heart (McHugh) ..... 1/2 Min.

And<sup>te</sup>  
Musical notation for All My Life I've Been Searching. Copyright: 1925 Jack Mills

Katharina

30 (Title) **BE YOURSELF, BIG BOY** ..... Don't Be Like That (Pinkard) ..... 1/2 Min.

Mod<sup>to</sup>  
Musical notation for Be Yourself, Big Boy. Copyright: 1928 Shapito, Bernstein & Co.

same

31 (Title) **DON'T FORGET I'M YOUR PRISONER** ..... Repeat No. 28 "Immer Noch Ein Tropfchen" (very quietly) ..... 1/2 Min.

Schottische  
Musical notation for Don't Forget I'm Your Prisoner.

Don't Be Like That

32 (Action) **TELEGRAPH TICKER SEEN** ..... Police Parade March (Lincke) ..... 1 Min.

Marcia  
Musical notation for Telegraph Ticker Seen. Copyright: 1907 E. B. Marks

Double Eagle

33 (Action) **RILEY LEAVES GERMAN POLICEMEN AFTER RECEIVING TELEGRAM** ..... Garden Frolics (Pasternack) ..... 3/4 Min.

All. - *giacoso*  
Musical notation for Riley Leaves German Policemen. Copyright: 1928 Irving Berlin

34 (Title) **JUST WHEN I WAS BEGINNING** ..... Repeat No. 30 "Don't Be Like That" ..... 3/4 Min.

Mod<sup>to</sup>  
Musical notation for Just When I Was Beginning.

35 (Action) **GIRL PUTS HAT ON** ..... O Katharina (Fall) ..... 3/4 Min.

Mod<sup>to</sup>  
Musical notation for Girl Puts Hat On. Copyright: Leo Feist

same

- 36 (Action) DAVY SEES MARY ..... Repeat Love Theme No. 10 ..... ¾ Min.  
 37 (Action) RILEY AND GIRL SIT DOWN AT TABLE ..... Repeat No. 29 "Down Deep In An Irishman's Heart" ..... 1 Min.  
 38 (Action) RILEY SITS DOWN AT TABLE WITH GERMAN MAN ..... Repeat No. 28 "Immer Noch Ein Tropfchen" ..... 1¾ Min.  
 39 (Title) DAVY, ME BOY, YOU'RE TOO YOUNG ..... Repeat Riley Theme No. 1 ..... 2 Min.  
 40 (Action) GERMAN YODELERS GREET LENA ..... Hi-lo from "Deutscher Walzer" (Kaine) ..... ½ Min.

*Waltz*  
  
 Copyr. 1913 Volkwein Bros

- 41 (Action) GERMAN YODELERS START TO SING ..... O, Du Lieber Augustine from "Deutscher Walzer" (Kaine) ..... ¾ Min.

*Waltz*  
  
 Copyr. 1913 Volkwein Bros

- 42 (Action) DAVY AND CABMAN ENTER CAFE ..... German Patrol (Schrader) ..... ½ Min.

*Marcia*  
  
 Copyr. Carl Fischer

- 43 (Action) ARGUMENT AND FIGHTING STARTS ..... Jollifications (Noyes) (Very lively) ..... ¾ Min.

*All con brio*  
  
 Copyr. 1922 Hawkes & Son

- 44 (Action) GERMAN POLICE APPEAR ..... Repeat No. 32 "Police Parade" ..... 1¼ Min.

*Marcia*

- 45 (Action) RILEY AND DAVY ENTER AEROPLANE ..... Repeat Riley Theme No. 1 ..... 1 Min.

*Marcia*

*aeroplane gallop & effects*

- 46 (Title) NOTE: Tympany rumble for aeroplane. DAVY, I SEEM TO THINK ..... Forsaken (Lake) ..... ¾ Min.

*And<sup>te</sup>*  
  
 Copyr. Carl Fischer

- 47 (Title) PARIS—WHOSE MAIN STREET ..... A La Patee (Verdin) ..... 1 Min.

*Con spirito*  
  
 Copyr. 1920 Belwin Inc

- 48 (Action) WIDOW SEEN WITH TWO MEN ..... Priere Tendre (Mouton) ..... ½ Min.

*And<sup>te</sup>*  
  
 Copyr. Manus Music Co

- 49 (Action) AFTER RILEY KISSES WIDOW ..... Paris Life (Mosay) ..... 2 Min.

*Lively*  
  
 Copyr. 1928 Sam ...

- 50 (Title) MR. RILEY! MR. RILEY! ..... Repeat Riley Theme No. 1 ..... ½ Min.

*Moderato*

*Pop*

51 (Title) SEE YOU TOMORROW ..... French Pastry (Lakay) ..... 1½ Min.

one step  
Musical notation for 'SEE YOU TOMORROW' in G major, 2/4 time, one step tempo. The melody is written on a single staff with a treble clef. Copyright 1928 IRVING BERLIN.

52 (Action) DANCING STARTS ..... NOTE: Play quietly during night scene. Doin' the New Low Down (McHugh) ..... 1¼ Min.

mod<sup>to</sup>  
Musical notation for 'DANCING STARTS' in G major, 2/4 time, moderate tempo. The melody is written on a single staff with a treble clef. Copyright 1928 JACK MILLS INC.

53 (Action) DAVY IS SEEN OUTSIDE OF CAFE ..... Mam'selle Caprice (Baron) ..... ¾ Min.

Musical notation for 'DAVY IS SEEN OUTSIDE OF CAFE' in G major, 2/4 time. The melody is written on a single staff with a treble clef. Copyright 1920 BELWIN INC.

54 (Action) CURTAIN GOES UP ..... Pompanola (Henderson) ..... 1½ Min.

mod.  
Musical notation for 'CURTAIN GOES UP' in G major, 2/4 time, moderate tempo. The melody is written on a single staff with a treble clef. Copyright 1918 DE SYLVA BROWN & HENDERSON.

55 (Title) TERRIBLE! THEY'RE TRIPPIN' ..... NOTE: Trombone and Saxophone predominate. St. Louis Blues (Handy) ..... ½ Min.

mod<sup>to</sup>  
Musical notation for 'TERRIBLE! THEY'RE TRIPPIN'' in G major, 2/4 time, moderate tempo. The melody is written on a single staff with a treble clef. Copyright 1914 W. C. HANDY.

56 (Action) RILEY SEEN IN BED ..... NOTE: Trumpet player predominate—watch screen. The Morning After the Night Before (Pollack) ..... ¾ Min.

valse  
Musical notation for 'RILEY SEEN IN BED' in G major, 3/4 time, waltz tempo. The melody is written on a single staff with a treble clef. Copyright 1927 JACK MILLS INC.

57 (Action) RILEY SEES TWO WOMEN ..... Mariette (Stern) ..... ¾ Min.

polka  
Musical notation for 'RILEY SEES TWO WOMEN' in G major, 2/4 time, polka tempo. The melody is written on a single staff with a treble clef. Copyright 1911 E. B. MARKS MUSIC CO.

58 (Action) LENA SEEN TALKING TO MAN IN STREET... En Visite (McDonald) ..... ¾ Min.

alleg.  
Musical notation for 'LENA SEEN TALKING TO MAN IN STREET' in G major, 2/4 time, allegretto tempo. The melody is written on a single staff with a treble clef. Copyright 1927 CINE MUSIC SERVICE.

59 (Action) FLASH-BACK TO RILEY IN BED ..... L'Amour (Christine) ..... 1¾ Min.

two step  
Musical notation for 'FLASH-BACK TO RILEY IN BED' in G major, 2/4 time, two step tempo. The melody is written on a single staff with a treble clef. Copyright 1913 E. B. MARKS.

60 (Action) LENA ENTERS RILEY'S ROOM ..... Repeat No. 58 "En Visite" ..... 1¼ Min.

all.  
Musical notation for 'LENA ENTERS RILEY'S ROOM' in G major, 2/4 time, allargando tempo. The melody is written on a single staff with a treble clef.

61 (Title) POLICEMAN'S BROGANS ..... Hustle Bustle (Delille) ..... ¼ Min.

allegretto  
Musical notation for 'POLICEMAN'S BROGANS' in G major, 2/4 time, allegretto tempo. The melody is written on a single staff with a treble clef. Copyright 1928 IRVING BERLIN.

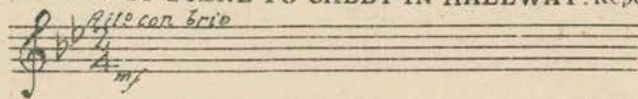
62 (Action) DAVY ENTERS ROOM ..... Horse Radish (Ring-Hager) ..... 1 Min.

alleg. con brio  
Musical notation for 'DAVY ENTERS ROOM' in G major, 2/4 time, allegro con brio tempo. The melody is written on a single staff with a treble clef. Copyright 1926 SAM FOX PUB. CO.

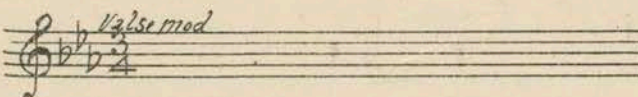
63 (Title) I'VE GOT TO GET HIM HOME ..... Pal Of My Cradle Days (Piantadosi) ..... ½ Min.

valse mod.  
Musical notation for 'I'VE GOT TO GET HIM HOME' in G major, 3/4 time, moderate waltz tempo. The melody is written on a single staff with a treble clef. Copyright 1925 LEO FEIST INC.

64 (Action) CHANGE OF SCENE TO CABBY IN HALLWAY. Repeat No. 62 "Horse Radish" ..... ¼ Min.



65 (Action) RILEY RETURNS TO HIS ROOM ..... Repeat No. 63 "Pal Of My Cradle Days" ..... ¾ Min.

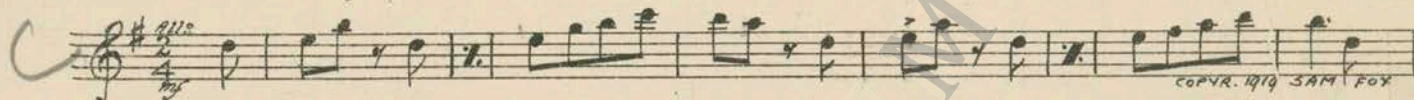


66 (Title) I'M GOIN' TO STAY RIGHT ..... La Marseillaise (De L'Isle) ..... ¾ Min.

*Rizzo Berries*



67 (Action) TAXI SEEN ON ROAD ..... Taxi (Kaufman) ..... ¾ Min.

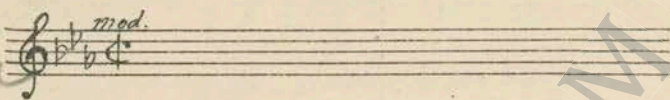


68 (Title) AUF WIEDERSEHN! ..... Auf Wiedersehn (Romberg) ..... 1 ¼ Min.

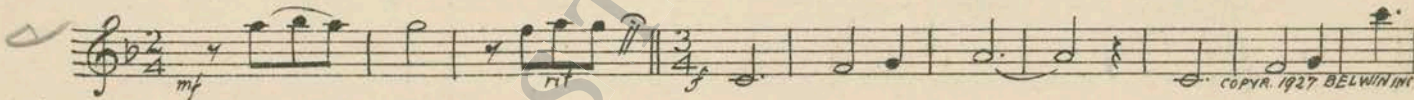


69 (Title) LENA, DARLINT! WHAT'S YOUR ..... Repeat Krausmeyer Theme No. 3 ..... ½ Min.

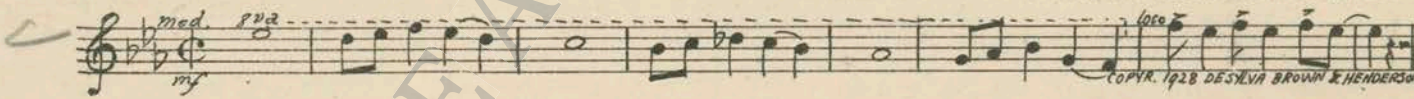
*where is my meyer*



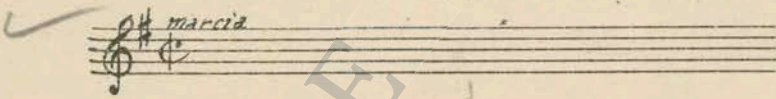
70 (Action) STEWARDS SEEN ON BOAT ..... Burlesque on "How Dry I Am" (Kempinski) ..... ½ Min.



71 (Title) MARY! I'VE BEEN CHASING ..... LOVE THEME: Pretty Petite and Sweet (Archer) (Last 8 bars) ..... ¼ Min.



72 (Title) OFFICER RILEY? ..... Repeat Riley Theme No. 1 ..... ½ Min.



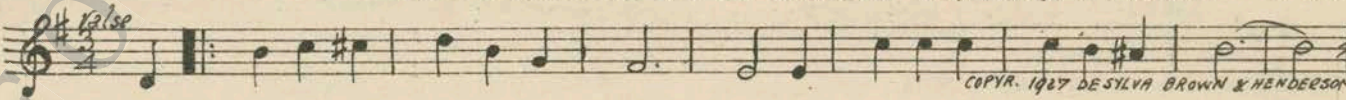
73 (Action) CHANGE OF SCENE BACK TO DAVY AND MARY ..... LOVE THEME: Pretty Petite and Sweet (Archer) ..... 1 Min.

*L. Theme*



74 (Action) FADE-IN TO WEDDING PROCESSION ..... The Bells Are Ringing For Mary (Colby) (Chimes) ..... ½ Min.

*L. 7*



75 (Title) STOP! ..... Repeat Krausmeyer Theme No. 3 ..... 1 ¼ Min.

76 (Title) SIXTY MILLION MEN ..... Repeat Riley Theme No. 1 ..... ¼ Min.

THE END

Printed in U. S. A.

*Katherine*

Complete orchestrations and single piano parts of each separate number contained hereon, can be purchased from CAMEO MUSIC SERVICE CORPORATION, 315-317 WEST 47TH STREET, NEW YORK CITY.

95:2271:1