


443
✓ 23-24-25

Thematic Music  Cue Sheet

M. J. MINTZ (PATENT)
JULY 31, 1923.



Adolph Zukor and Jesse L. Lasky
present
BETTY BRONSON
in
An Elinor Glyn Production
'RITZY'

with
James Hall
Directed by Richard Rosson
Story by Elinor Glyn
Screen play by Percy Heath and Robert N. Lee
Compiled by James C. Bradford
Footage 5306 feet

A Paramount Picture

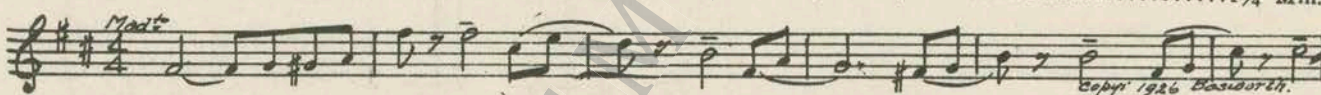
1. AT SCREENING Valse Nanette (Friml) 2¼ Min.

Molto viva

copy 1926 by Emil Hachez & Co.

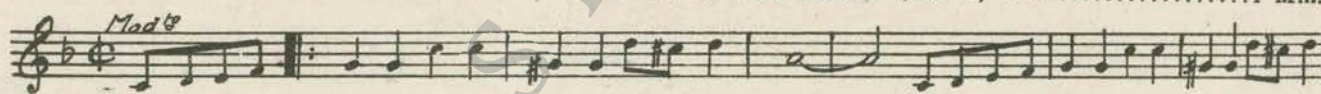
NOTE: Play from beginning with introduction.

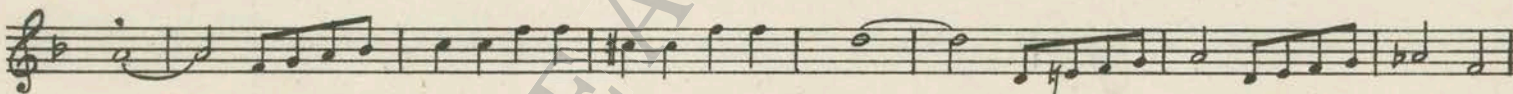
2. (Action) INSERT—BROWN IRON WORKS Little Damask Rose (Walton) 1¼ Min.

Moderato

copy 1926 Basendorff.

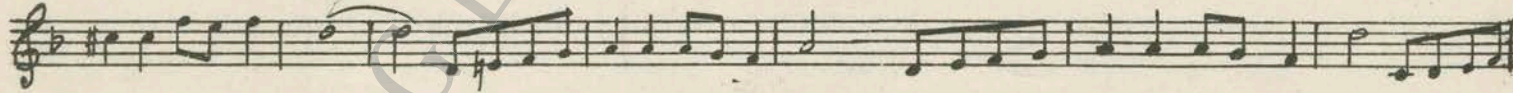
NOTE: Effects of blast furnaces—cover by Timpany.

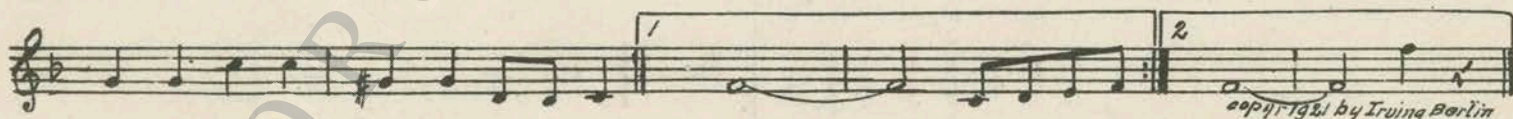
3. (Action) FLASH-BACK TO GIRLS THEME: Pretty Cinderella (Harris) 1 Min.

Moderato


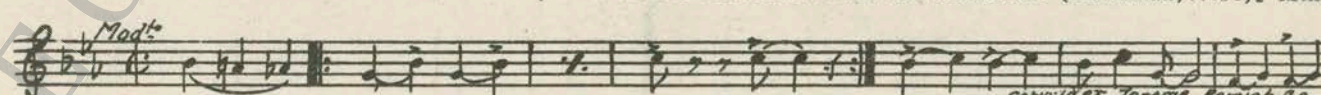







copy 1926 by Irving Berlin

4. (Action) MUSIC STARTS I'm Gonna Charleston Back to Charleston (Handman) 1½ Min.

Moderato

copy 1928 Jerome Kern & Co.

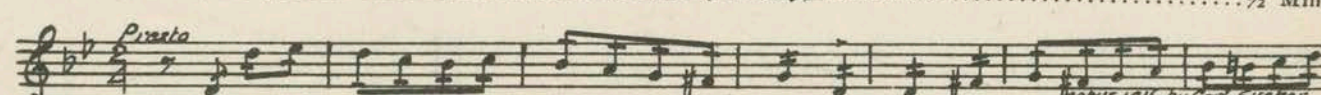
NOTE: Stop music for applause ¼ of a minute.

5. (Action) ORCHESTRA STARTS AGAIN Hum Your Troubles Away (Woods) 1½ Min.

Moderato

copy 1926 Leo Feist, Inc.

6. (Action) FRIENDS START TO JOLLY RITZY Intermezzo (Arensky) ½ Min.

Pizzicato

copy 1916 by Carl Fischer.

7. (Action) MUSIC STARTS AGAINIt All Depends On You (Henderson)1 3/4 Min.

Mod^{to}

copyr 1926 by De Sylva Brown & Henderson.

8. (Action) INSERT—SOCIETY NOTESRepeat Theme No. 31 1/2 Min.

Mod^{to}

9. (Action) RITZY SHOWS ARTICLE TO DAD.....Incid. Symphony No. 3 (Kempinski)1 1/4 Min.

All^o Mod^{to}

copyr 1927 Photo play music co.

10. (Action) DUKE ENTERSThe Woodland Flirt. (Ring-Hager)1 1/4 Min.

Mod^{to} assai.

copyr 1923 Bellwin Inc.

11. (Action) GIRLS ENTER ROOMFlocons de Neige (Bradford-Boutelje)3/4 Min.

All^o fucoso

copyr 1923 by Robbins Engel.

12. (Action) LONG SHOT OF STEAMERSailing, Sailing from "Bits of Old Time Hits" (Reeg).....1 Min.

Bright

copyr 1913 by Volkwein Bros.

13. (Action) DUKE AND ALGYPrelude (Jarnefelt)2 1/4 Min.

All^o quasi All^o

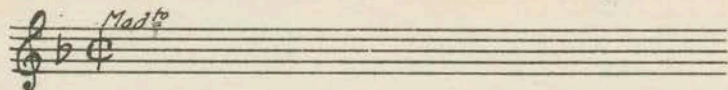
copyr 1913 by G. Schirmer.

14. (Action) ALGY SITS BESIDE MARYMignonette (Sodero)2 Min.

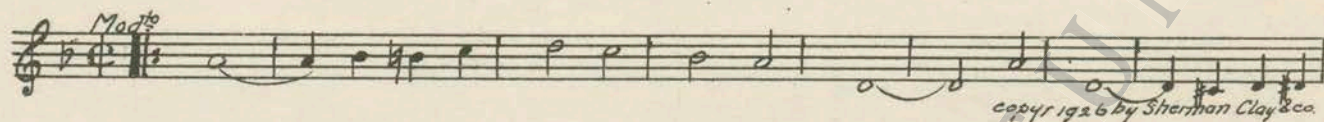
All^o

copyr 1927 by Carl Fischer.

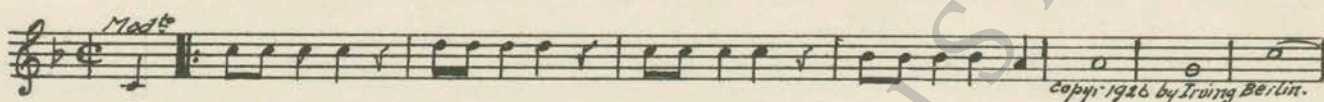
15. (Title) YOUR GRACE, THIS IS Repeat Theme No. 3 1 Min.



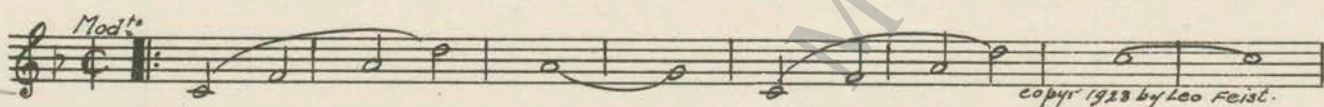
16. (Title) A DANGEROUS NIGHT Idolozing (West) 1 Min.



17. (Action) ALGY READING TO MARY How I Love You (Brown) 1/2 Min



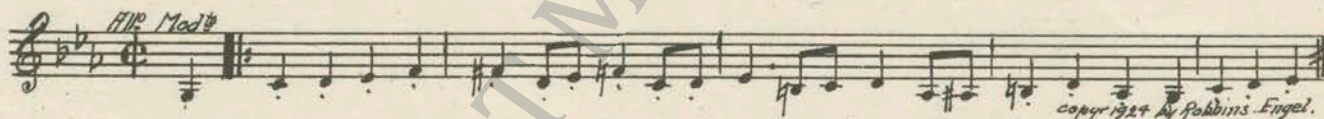
NOTE: Play a la burlesque.
18. (Action) TWO GIRLS IN BED Someone Loves You After All (Tierney) 1 Min.



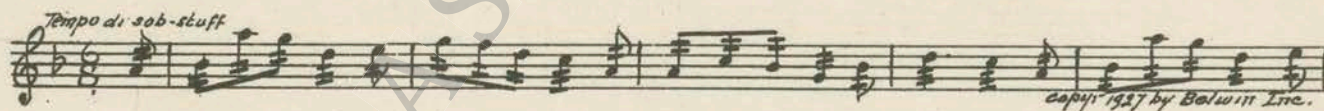
19. (Title) WASHINGTON AT WATERLOO Elopement (Carrozzini) 3 Min.



20. (Title) THREE MEN IN THE MOONLIGHT Misterioso Burlesque (Savino) 1 1/2 Min.



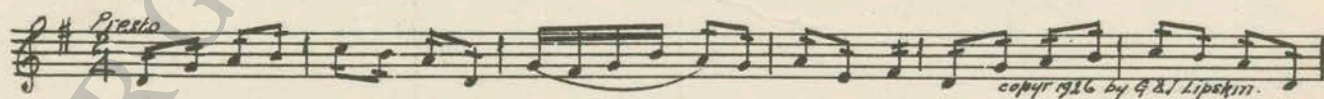
21. (Action) ALGY SPEAKS TO RITZY Burlesque on Lange's Flower Song (Kempinski) 1 Min.



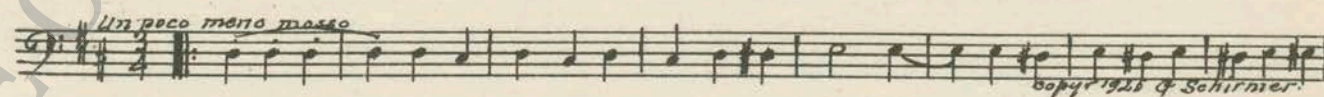
22. (Title) I SAID THINGS Humoresque (Tschaikowsky) 3/4 Min.



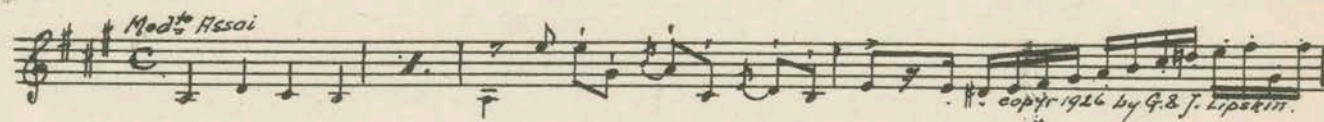
23. (Title) YOU SILLY LITTLE SNOB Vivacity (Conterno) 1 1/2 Min.



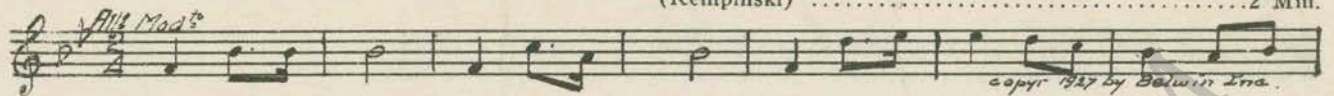
24. (Title) AN HOUR BEFORE LANDING Scherzo from Sonata No. 2 (von Weber) 1 1/4 Min.



NOTE: Start at No. 6
25. (Title) LONDON IS ALWAYS NOISY Scherzo Primo (Conterno) 2 3/4 Min.



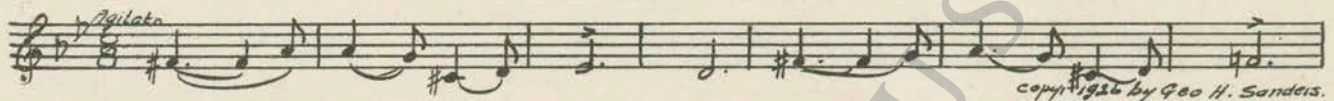
26. (Action) DAD KNOCKS ON DOORBurlesque on Mendelssohn's and Wagner's Wedding March (Kempinski)2 Min.



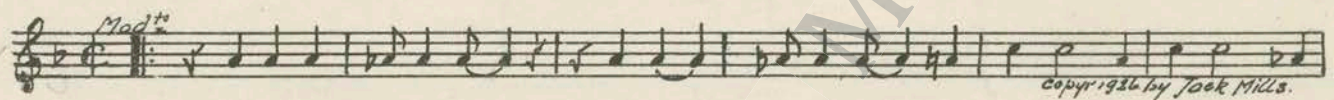
27. (Title) STOP!Scherzando Hurry (Frey)2 Min.



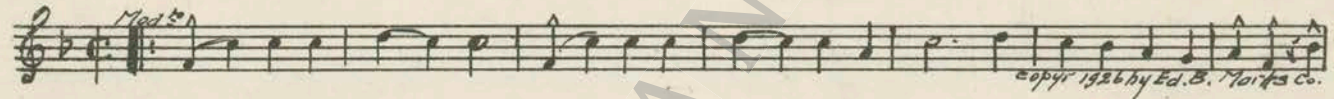
28. (Action) MARY AND RITZY IN ROOM ALONE.....Threatening Elements (Schad)2½ Min.



29. (Action) RITZY SEES BLONDE PICK UP FELLOW.....How Could Red Riding Hood (Randolph)¾ Min.



30. (Action) RITZY DROPS HANDKERCHIEFHe Knows His Groc'ries (Breau)¾ Min.



31. (Title) MR. HASSAN, I WAS JUSTHave You Forgotten? (Ager)¾ Min.



32. (Action) MARY LOOKING FOR RITZYGossip (Borch)¾ Min.



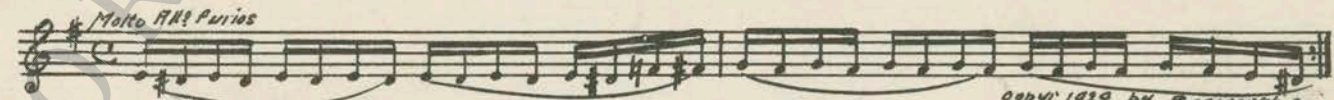
33. (Action) RITZY AND HASSAN ENTER ROOM.....Valse Dramatic (Kapee)1¾ Min.



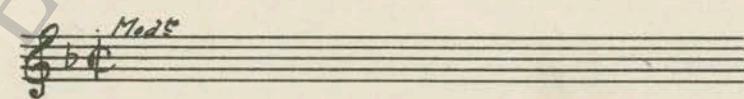
34. (Title) DO YOU CARE FOR WINE?A Mysterious Event (Zamecnik)2½ Min.



35. (Title) TELL ME FRANKLYStorm Music (Ketelbey)2 Min.



36. (Title) I'VE BEEN A SILLY LITTLE FOOL.....Repeat Theme No. 31½ Min.



THE END

Country of Origin, U. S. A.

Orchestrations or single piano parts of each separate musical selection suggested hereon, can be purchased from CAMEO MUSIC SERVICE CORPORATION, 315-317 WEST 47TH STREET, NEW YORK CITY.