

Sunday  
Jan 14

M. J. MINTZ (PATENT)  
JULY 31, 1923.

IVAN PLAYERS, Inc.  
presents

"LYING WIVES"

A Dramatic Presentation of Troubled Lives

Written and Directed by IVAN ABRAMSON

With a Brilliant Array of Screen Luminaries

Music compiled by James C. Bradford

- 1 AT SCREENING ... *Sunset Sketch* ... In Minor Mode No. 1 (DeKoven) ... 1 Min.

Musical notation for item 1, including treble clef, 2/4 time signature, and notes with dynamics like *rit*. Copyright 1924 by John Church Co.

- 2 (Title) THEODORE STANHOPE ... *Gray Days* ... Desesperance (Pesse) ... 1 3/4 Min.

Musical notation for item 2, including treble clef, 2/4 time signature, and notes with dynamics like *And<sup>te</sup> quasi lento* and *8va Basso*. Copyright 1924 by John Church Co.

- 3 (Title) SEVERAL YEARS ... LOVE THEME: Where the Rainbow Ends (Ayer) ... 1 1/2 Min.

Musical notation for item 3, including treble clef, 2/4 time signature, and notes with dynamics like *Slow*, *rit*, *allegro*, and *dim*. Copyright 1920 by Feldman & Co.

- 4 (Title) A FLING OF MATRIMONY ... NOTE: Play very sweetly as a ballad ... Petite Bijouterie (Bohm) ... 2 Min.

Musical notation for item 4, including treble clef, 3/4 time signature, and notes with dynamics like *Valse*. Copyright 1917 by Carl Fischer.

- 5 (Action) MARJORIE AT DESK ... Love Song (Wright) ... 2 1/4 Min.

Musical notation for item 5, including treble clef, 2/4 time signature, and notes with dynamics like *And<sup>te</sup> rto*. Copyright 1920 by Schirmer.

- 6 (Action) FLASH TO PATRICIA AND WALLY ... *Chaconne* ... Midsummer (Maquarre) ... 2 Min.

Musical notation for item 6, including treble clef, 2/4 time signature, and notes with dynamics like *All<sup>o</sup>*. Copyright 1924 by S. Matus.

- 7 (Title) ALVIN CHASE ... Debutante (Rapee-Axt) ... 2 1/4 Min.

Musical notation for item 7, including treble clef, 3/4 time signature, and notes with dynamics like *Med<sup>te</sup>*. Copyright 1923 by Robbins Frigo.

- 8 (Title) I WANT YOU TO MEET ... *Tears of Love* ... PATRICIA THEME: Thais (Knox) ... 1/2 Min.

Musical notation for item 8, including treble clef, 2/4 time signature, and notes with dynamics like *Valse*. Copyright 1921 by Edw. Matus.

That evening -

9 (Title) THAT EVENING ..... Driftwood (Kahn) ..... 2½ M.n.

Musical notation for 'THAT EVENING' in G major, 4/4 time, marked *Mod<sup>to</sup>*. Copyright 1924 by Berlin.

10 (Action) PATRICIA AND HUSBAND LEAVE ROOM....Repeat Patricia Theme No. 8 ..... 1½ Min

Handwritten Roman numeral II and musical notation for 'PATRICIA AND HUSBAND LEAVE ROOM' in G major, 3/4 time, marked *Valse*.

11 (Action) MARJORIE IN OFFICE ..... Waiting (Ancliffe) ..... 1¾ Min.

Musical notation for 'MARJORIE IN OFFICE' in G major, 4/4 time, marked *And<sup>to</sup> Mod<sup>to</sup>* and *pp*. Copyright 1922 by Borworth & Co.

12 (Title) I WOULDN'T BE A BIT SURPRISED ..... Souvenir d'Amour (Conte) ..... 1¼ Min.

Musical notation for 'I WOULDN'T BE A BIT SURPRISED' in G major, 4/4 time, marked *Mod<sup>to</sup>* and *p*. Copyright 1924 by G. Schirmer.

13 (Action) PATRICIA READING LETTER ..... Repeat Patricia Theme No. 8 ..... 1¼ Min.

Handwritten Roman numeral II and musical notation for 'PATRICIA READING LETTER' in G major, 3/4 time, marked *Valse*.

14 (Action) ELSIE ENTERS OFFICE ..... Cinderella's Bridal Procession (Dicker) ..... 1¼ Min.

Musical notation for 'ELSIE ENTERS OFFICE' in G major, 2/4 time, marked *All<sup>to</sup>*. Copyright 1923 by Carl Fischer.

15 (Action) FLASH-BACK TO PATRICIA AND HUSBAND. Repeat Patricia Theme No. 8 ..... ½ Min

16 (Action) ELSIE AND WALLY AT TABLE ..... Jeanette (Riesefeld) ..... ½ Min.

Musical notation for 'ELSIE AND WALLY AT TABLE' in G major, 5/8 time, marked *All<sup>to</sup>* and *pp*. Copyright 1918 by G. Schirmer.

17 (Action) STANHOPE AND FRIEND TALKING ..... Afflizione (Gabriel Marie) ..... ½ Min.

Musical notation for 'STANHOPE AND FRIEND TALKING' in G major, 4/4 time, marked *Larghetto* and *p*. Handwritten note: *Dram. Tens - 1 -*. Copyright 1918 by Ricordi.

18 (Title) THE STANHOPE'S GIVE A BAL MASQUE..Charleston (Johnson) ..... ¾ Min.

Musical notation for 'THE STANHOPE'S GIVE A BAL MASQUE' in G major, 2/4 time, marked *Mod<sup>to</sup>*. Copyright 1923 by Harms Inc.

19 (Action) APPLAUSE ..... Me and the Boy Friend (Monaco) ..... 3¾ Min.

Musical notation for 'APPLAUSE' in G major, 4/4 time, marked *Bright*. Copyright 1924 by Remick & Co.

20 (Action) ELSIE SPEAKS TO PATRICIA ..... Dram. Andante No. 1 (Rapee-Axt) ..... 2 Min.

Musical notation for 'ELSIE SPEAKS TO PATRICIA' in G major, 2/4 time, marked *Sostenuto* and *mf*. Copyright 1923 by Robbins Engel.

21 (Action) ELSIE ON SOFA—FRIENDS GATHER ABOUT. Adriana Lecouvreur (Cilea) ..... 1¼ Min.

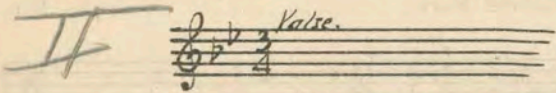
Musical notation for 'ELSIE ON SOFA—FRIENDS GATHER ABOUT' in G major, 2/4 time, marked *Senza l'entenza con cordina?* and *ppp*. Handwritten note: *roll*. Copyright 1903 by Ed. Sonzogno.

Handwritten note at the bottom: "The Swift Moving Events -"

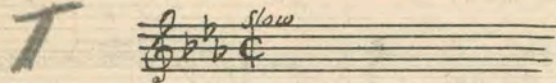
22 (Title) THE SWIFT MOVING EVENTS ..... A Regret (Byford) ..... *Nocturnette* ..... 1½ Min.



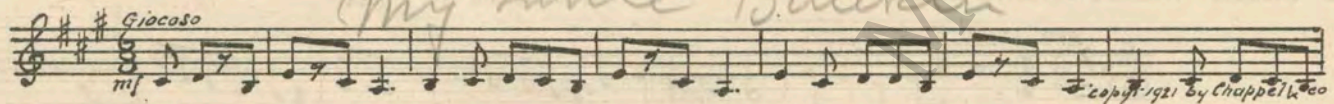
23 (Action) PATRICIA AND WALLY ..... Repeat Patricia Theme No. 8 ..... 1¼ Min.



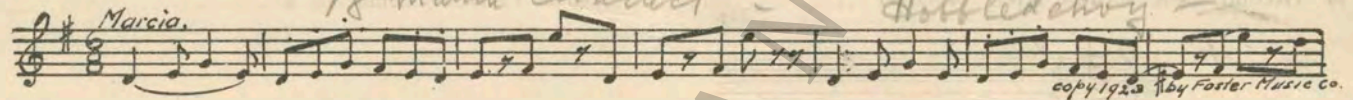
24 (Title) I'M SORRY MISS BUCKLEY IS LEAVING..... Repeat Love Theme No. 3 ..... ¾ Min.



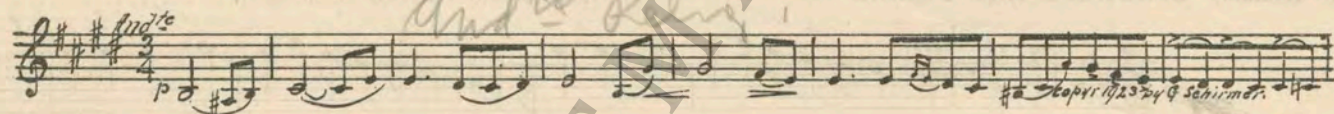
25 (Title) FOUR YEARS LATER ..... Girls and Boys "Children's Overture (Quilter) ..... 2¼ Min.



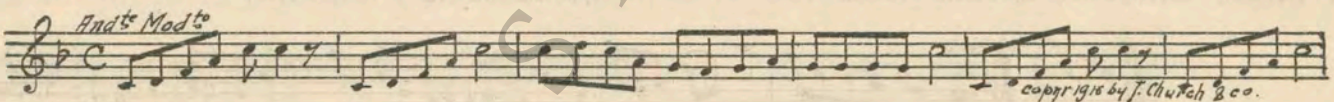
26 (Action) STANHOPE ENTERS ..... The Pocking-Horse Parade (Ring-Hager) ..... 2 Min.



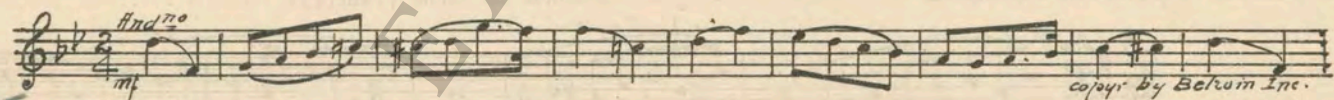
27 (Title) I'VE JUST NOTICED A STRONG ..... Cantina (Goltermann) ..... 2 Min.



28 (Title) PERHAPS IT WOULD BE BETTER ..... Mighty Lak' A Rose (Nevin) ..... 1 Min.



29 (Title) SEVERAL DAYS LATER ..... May Dreams (Borch) ..... 1¼ Min.

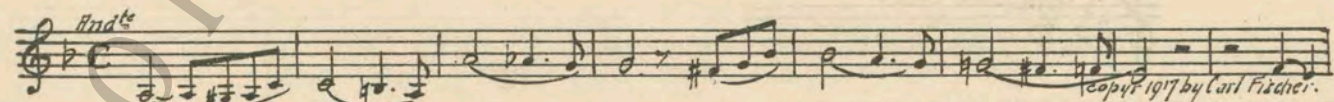


30 (Action) PATRICIA AND WALLY IN OFFICE ..... Repeat Patricia Theme No. 8..... 1½ Min.

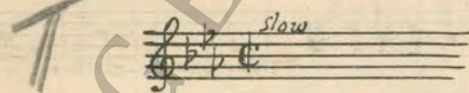
31 (Action) MARJORIE PLAYING INDIAN ..... Indian War Dance No. 19 (Herbert) ..... ½ Min.



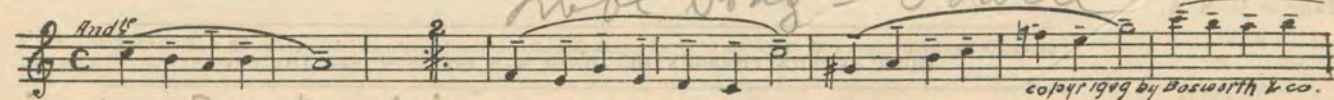
32 (Action) PATRICIA ENTERS ROOM ..... Kunihild (Kistler) ..... ¾ Min.



33 (Action) MARJORIE AND WALLY AT RADIO ..... Repeat Love Theme No. 3 ..... 1¼ Min.



34 (Action) OFFICERS ENTER ROOM ..... Souvenir de Tendresse (Ketelbey) ..... 1½ Min.



*D. Marjorie Du Boudoir*

35 (Action) MARJORIE IN BOUDOIR *Heart to Heart* Tender Memories (Rapee-Axt) ..... 1½ Min.

Musical notation for item 35, featuring a treble clef, key signature of one sharp (F#), and common time (C). The tempo marking is *And<sup>te</sup>*. The score includes a copyright notice: *copyr 1928 by Robbins Engel*.

36 (Action) PATRICIA IN BOUDOIR *Consolation* L'Heureuse Issue (Gabriel Marie) ..... 2½ Min.

Musical notation for item 36, featuring a treble clef, key signature of one flat (Bb), and common time (C). The tempo marking is *Larghetto*.

37 (Action) MARJORIE ENTERS STANHOPE'S HOME *Le Reve* Piangere (Gabriel Marie) ..... 3 Min.

Musical notation for item 37, featuring a treble clef, key signature of one sharp (F#), and 6/8 time. The tempo marking is *Lento*.

38 (Action) WALLY PACING ROOM *Dram. Finale - Royer* Appassionato No. 2 (Axt) ..... 2 Min.

Musical notation for item 38, featuring a treble clef, key signature of one flat (Bb), and 3/4 time. The tempo marking is *All<sup>o</sup> appass*. The score includes a copyright notice: *copyr 1924 by Robbins Engel*.

39 (Action) PATRICIA AND WALLY Repeat Patricia Theme No. 8 ..... 1½ Min.

Musical notation for item 39, featuring a treble clef, key signature of one flat (Bb), and 3/4 time. The tempo marking is *Valse*. A large handwritten Roman numeral *II* is written to the left of the staff.

40 (Action) STANHOPE AND FRIEND *Sinf. No. 1* Appassionato Patetico (Bradford) ..... 1 Min.

Musical notation for item 40, featuring a treble clef, key signature of one flat (Bb), and 3/4 time. The tempo marking is *And<sup>te</sup> con moto*. The score includes a copyright notice: *copyr 1924 by Belwin Inc.*

41 (Action) MARJORIE ENTERS ROOM *Agitato* Appassionato No. 1 (Rapee-Axt) ..... 1½ Min.

Musical notation for item 41, featuring a treble clef, key signature of one flat (Bb), and 3/4 time. The tempo marking is *All<sup>o</sup> agitato*. The score includes a copyright notice: *copyr 1923 by Robbins Engel*.

42 (Action) PATRICIA PACKING *Heartsease* Musique de Scene (Fauchey) ..... 3½ Min.

Musical notation for item 42, featuring a treble clef, key signature of one sharp (F#), and common time (C). The tempo marking is *And<sup>te</sup>*.

43 (Title) YES, I HAVE A HEART *Heartsease* The Afterglow (Huerter) ..... 1¼ Min.

Musical notation for item 43, featuring a treble clef, key signature of one flat (Bb), and 4/4 time. The tempo marking is *Mod<sup>te</sup>*. The score includes a copyright notice: *copyr 1924 by G. Schirmer*.

44 (Action) STANHOPE ENTERS Repeat No. 40 "Appassionato Patetico" ..... 1½ Min.

Musical notation for item 44, featuring a treble clef, key signature of one flat (Bb), and 3/4 time. The tempo marking is *And<sup>te</sup> con moto*.

45 (Action) CHASE ALONE IN APARTMENT *Open Thine Blue Eyes* The Pal That I Loved (Pease) ..... 1¾ Min.

Musical notation for item 45, featuring a treble clef, key signature of one flat (Bb), and 3/4 time.

46 (Action) FLASH-BACK TO WALLY AND FAMILY Repeat Love Theme No. 3 ..... 1¼ Min.

Made in U. S. A.

THE END

Complete Orchestrations and single parts of all compositions contained herein can be purchased from CAMEO MUSIC SERVICE CORPORATION, 112-118 West 44th Street, New York City

95:2044:1