

405

Thematic Music Cue Sheet

M. J. MINTZ (PATENT)
JULY 31, 1923.

ADOLPH ZUKOR and JESSE L. LASKY
present

GLORIA SWANSON
IN
"MADAME SANS-GENE"

From the play by Victorien Sardou and Emile Moreau

Directed by Leonce Perret

Screen play by Forrest Halsey

Music compiled by James C. Bradford

Footage 9979 feet

A Paramount Picture

- 1 AT SCREENING Festival March (Borch) 1 1/4 Min.

Musical notation for Festival March (Borch). Includes dynamic markings *mp* and *mf*. Copyright notice: *Comp. 1917, by G. Schirmer.*

- 2 (Title) IN THE FIRST DAYS OF FRENCH REVOLUTION Vicissitudes et Triomphe (Gabriel Marie) 1 1/4 Min.

Musical notation for Vicissitudes et Triomphe (Gabriel Marie). Includes dynamic markings *pp* and *mf*. Copyright notice: *Comp. 1918, by Chappell.*

- 3 (Action) CATHERINE SMELLS BURNING CLOTH . . . La Marseillaise 1 Min.

Musical notation for La Marseillaise. Includes dynamic marking *f* and tempo marking *Maestoso*. Copyright notice: *Comp. 1923, by Photo Play Music Co.*

NOTE: Start "P" and work up to "FF" as workers start to sing. Direct Music Cue.

- 4 (Title) THE NAMES OF SOME OF Intermezzo Pizzicata (Nardon) 3/4 Min.

Musical notation for Intermezzo Pizzicata (Nardon). Includes dynamic marking *pp* and tempo marking *Mod: 40*. Copyright notice: *Comp. by J. Fros.*



GEORGE EASTMAN MUSEUM

8 (Action) CATHERINE ALONE IN BOUDOIR CATHERINE THEME: Tres precieuse (Gabriel Marie) ... 2¾ Min.

Musical notation for item 8, featuring two staves of music. The first staff is marked *All. Ho Grazioso* and *p*. The second staff is marked *Opp. 1812, by Chopin.*

9 (Title) AT LIEUTENANT BONAPARTE'S APARTMENT Repeat Napoleon Theme No. 5 1 Min.

Musical notation for item 9, consisting of a single staff marked *And. Maest.*

10 (Action) CATHERINE SITS ON ARM OF CHAIR Repeat Fascination Theme No. 6 2¼ Min.

Musical notation for item 10, consisting of a single staff marked *And. mo*.

11 (Action) CATHERINE DROPS BASKET Repeat Catherine Theme No. 8 ¾ Min.

Musical notation for item 11, consisting of a single staff marked *All. Ho Grazioso*.

12 (Action) NAPOLEON SLAMS BOOK ON TABLE Dance des Serpents (Ahrends) ½ Min

Musical notation for item 12, featuring a single staff of music marked *All. Ho VIVO* and *p*. The notation includes a repeat sign. It is marked *Opp. 1917, by G. Schirmer.*

13 (Action) CATHERINE'S EXPRESSION SOFTENS Repeat Fascination Theme No. 6 ¾ Min.

Musical notation for item 13, consisting of a single staff marked *And. mo*.

14 (Title) DISAPPOINTMENT WAS NEVER TRAGEDY .. Folies-Bergere (Lincke) 2½ Min.

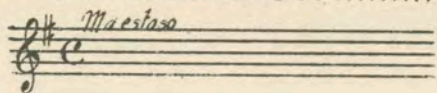
Musical notation for item 14, featuring a single staff of music marked *All. Ho VIVO* and *mf*. It is marked *Opp. 1921, by Edw. B. Marks.*

15 (Action) CATHERINE RUSHES AWAY La Cuapa (Buisson) 1 Min

GEORGE EASTMAN

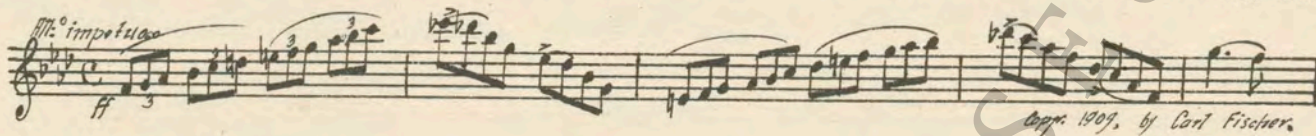
MUSEUM

19 (Title) **THE TENTH OF AUGUST WHEN THE REVOLUTIONISTS** Repeat No. 3 "La Marseillaise" 1¼ Min.



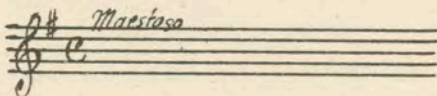
NOTE: Play very spirited, voices added if possible. Direct music cue.

20 (Action) **DRUMMERS CLOSE UP PLAYING ROLL** Robespierre Over. (Litolff) 2½ Min.



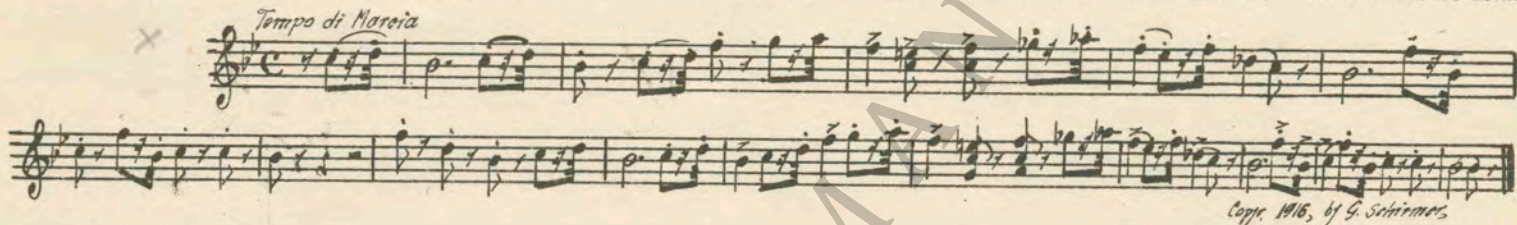
NOTE: Start at second Allegro Impetuoso and play toward end, working in Marseillaise. Battle effects ad lib; "P1" for flash-back to laundry.

21 (Action) **CATHERINE APPEARS AT HEAD OF CROWD ON STREET** Repeat No. 3 "La Marseillaise" 1¼ Min.

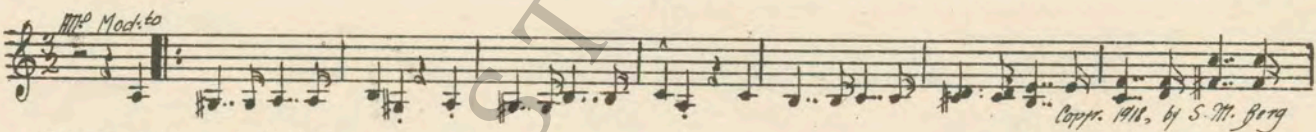


NOTE: Play very spirited, voices added if possible. Direct music cue; "PP" for laundry.

22 (Title) **I'VE SOME NEWS FOR YOU** FOUCHE THEME: Marche Miniature (Jacobi) 1 Min.

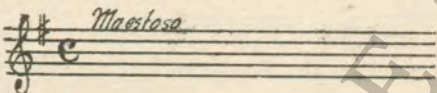


23 (Title) **THE REPUBLIC** Battle of Ypres (Borch) 1½ Min.

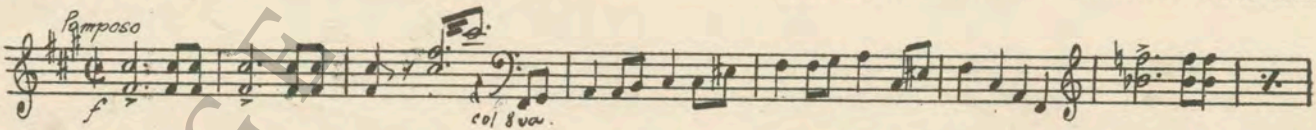


NOTE: Battle effects ad lib.

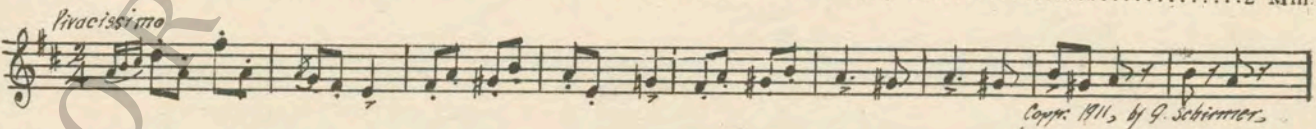
24 (Title) **THEN OUT OF CHAOS** Repeat No. 3 "La Marseillaise" ¾ Min.



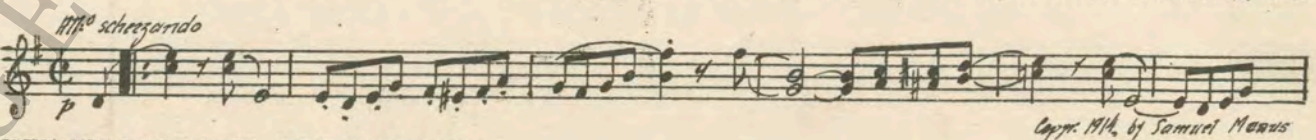
25 (Title) **FONTAINEBLEAU** Cortège Louis XIII (Fauchey) 3 Min.



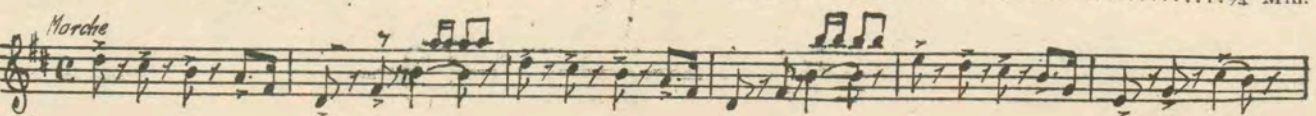
26 (Action) **CATHERINE APPEARS** Suzanne's Secret (Wolf-Ferrari) 2 Min.



27 (Title) **DOES YOUR GRACE REMEMBER** Midsummer (Maquarre) 1¼ Min.



28 (Title) **WHEN WE LAST MET, YOU SAVED MY LIFE** La P'Tit Soldat (Soler) ¾ Min.



29 (Action) FLASH-BACK TO CATHERINE Danse des Bouffons (Korsakow) 1 3/4 Min.

Vivace
Musical notation for Danse des Bouffons, featuring a treble clef, 2/4 time signature, and a key signature of one sharp (F#). The piece is marked *Vivace* and begins with a dynamic of *f*. Copyright 1916, by J. Schirmer.

30 (Action) EXTERIOR Patrie (Bizet) 1 1/2 Min.

Mod.to
Musical notation for Patrie, featuring a treble clef, 2/4 time signature, and a key signature of one sharp (F#). The piece is marked *Mod.to* and begins with a dynamic of *f*. Copyright 1919, by Carl Fischer.

31 (Action) CATHERINE SEES ROUSETTA IN CROWD... Knighthood Love Theme (Peters) 1 1/4 Min.

And.^{te} 1577 015
Musical notation for Knighthood Love Theme, featuring a treble clef, 2/4 time signature, and a key signature of one sharp (F#). The piece is marked *And.^{te} 1577 015* and begins with a dynamic of *p*. Copyright 1923, by Robbins - Engel, Inc.

32 (Action) BOTH ENTER CARRIAGE AND DRIVE AWAY. Fete Boheme (Massenet) 1 1/4 Min.

All.^o Mod.to
Musical notation for Fete Boheme, featuring a treble clef, 2/4 time signature, and a key signature of one sharp (F#). The piece is marked *All.^o Mod.to* and begins with a dynamic of *p*. Copyright 1901, by Carl Fischer.

33 (Title) THE MANSION OF THE DUKE AND DUCHESS OF DANZIG Escapade (Moulton) 1 1/2 Min.

Tempo di Gavotte
Musical notation for Escapade, featuring a treble clef, 2/4 time signature, and a key signature of one sharp (F#). The piece is marked *Tempo di Gavotte* and begins with a dynamic of *p*.

34 (Action) MAN SERVANT ENTERS Chez Mere Grand (Mouton) 3/4 Min.

Mysterioso
Musical notation for Chez Mere Grand, featuring a treble clef, 2/4 time signature, and a key signature of one sharp (F#). The piece is marked *Mysterioso* and begins with a dynamic of *p*. Copyright by J. Fred.

35 (Action) HE CLOSES DOOR Premier Reve (Mouton) 1 Min.

All.^o Mod.to
Musical notation for Premier Reve, featuring a treble clef, 2/4 time signature, and a key signature of one sharp (F#). The piece is marked *All.^o Mod.to* and begins with a dynamic of *p*.

36 (Action) CATHERINE PATS ROUSETTA ON CHEEK.. Valse Pathetique (Onivas) 1 Min.

Tempo di Valse
Musical notation for Valse Pathetique, featuring a treble clef, 2/4 time signature, and a key signature of one sharp (F#). The piece is marked *Tempo di Valse* and begins with a dynamic of *p*. Copyright by Edw. B. Marks.

37 (Action) GENTLEMAN KISSES CATHERINE'S HAND. Gigue (Gretv-Mottl) 2 1/2 Min.

All.^o
Musical notation for Gigue, featuring a treble clef, 3/8 time signature, and a key signature of one sharp (F#). The piece is marked *All.^o* and begins with a dynamic of *p*. Copyright 1916, by Carl Fischer.

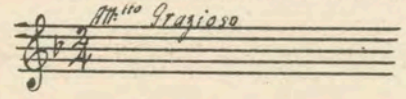
38 (Title) CHAMPAGNE Tambourin (Gretv-Mottl) 1 Min.

Presto
Musical notation for Tambourin, featuring a treble clef, 2/4 time signature, and a key signature of one sharp (F#). The piece is marked *Presto* and begins with a dynamic of *pp*. Copyright 1916, by Carl Fischer.

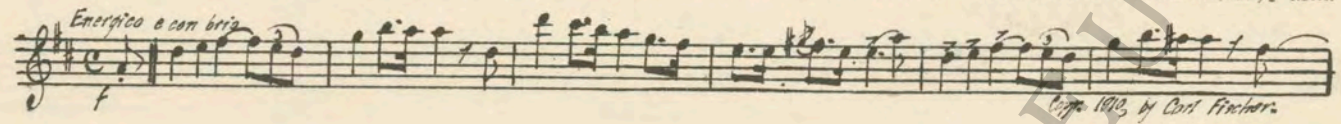
39 (Action) NAPOLEON IN STUDY Repeat Napoleon Theme No. 5 1 1/2 Min.

Larghetto
Musical notation for Napoleon Theme No. 5, featuring a treble clef, 2/4 time signature, and a key signature of one sharp (F#). The piece is marked *Larghetto*.

40 (Title) THE APARTMENTS OF THE DUCHESS OF DANZIG Repeat Catherine Theme No. 8 ¾ Min.



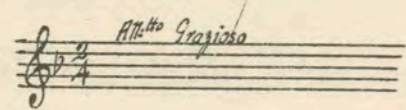
41 (Action) FLASH-BACK TO STEPS—NAPOLEON APPEARS (Une Promenade de Matin (Bendel) 1½ Min.



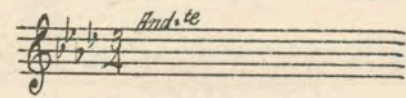
42 (Title) IT IS THE EMPEROR'S WISH Chanson Melancholique (Collinge) 1 Min.



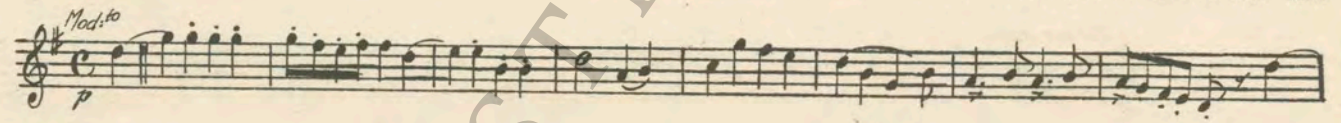
43 (Action) CATHERINE APPEARS ON STEPS Repeat Catherine Theme No. 8 1 Min.



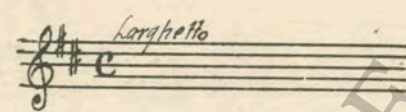
44 (Action) CATHERINE SPEAKS TO VON NEIPPERG Repeat No. 42 "Chanson Melancholique" 1 Min.



45 (Title) YOUR MAJESTY IS MISTAKEN Premier Bonheur (Salabert) 1 Min.



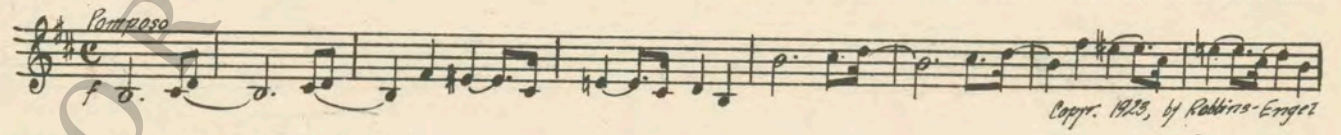
46 (Action) NAPOLEON IN STUDY—SISTER ENTERS Repeat Napoleon Theme No. 5 1¼ Min.



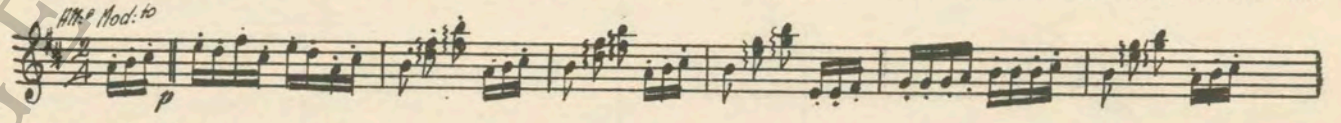
47 (Action) CATHERINE TALKING TO VON NEIPPERG. Desesperance (Pesse) 1¼ Min.



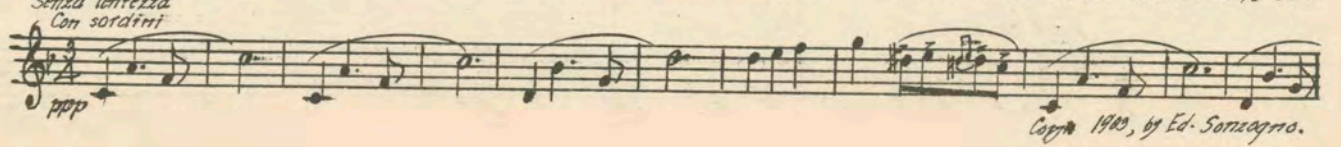
48 (Action) FLASH-BACK TO NAPOLEON—LEFEBVRE ENTERS Enemies of Women (Peters) 1 Min.



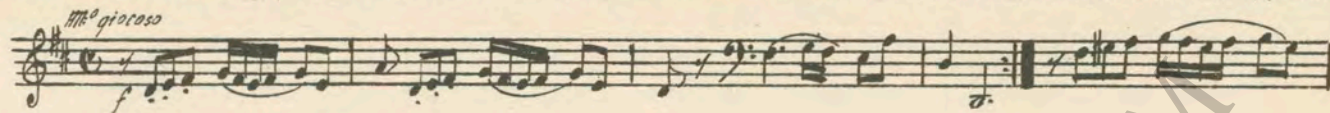
49 (Action) LEFEBVRE SPEAKS TO CATHERINE Motto Leggiero (Moulton) 1 Min.



50 (Title) THE EMPEROR'S SISTERS HAVE COMPLAINED Adriana Leconvreur (Cifea) 2½ Min.



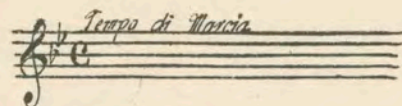
51 (Title) I ALMOST FORGOT Jivialities (Gabriel Marie) 1¾ Min.



52 (Action) CLOSE-UP OF CATHERINE WEeping Les Champs (Bradford-Boutelje) 1¼ Min.



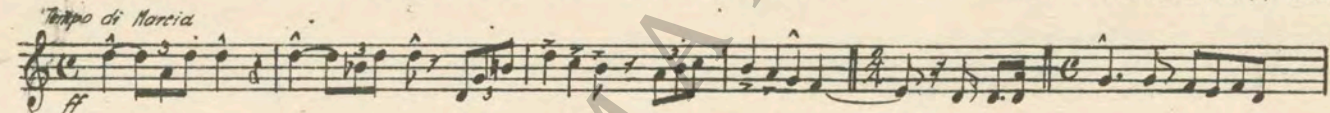
53 (Action) FOUche TAKES OUT SNUFF BOX Repeat Fouche Theme No. 22 ¾ Min.



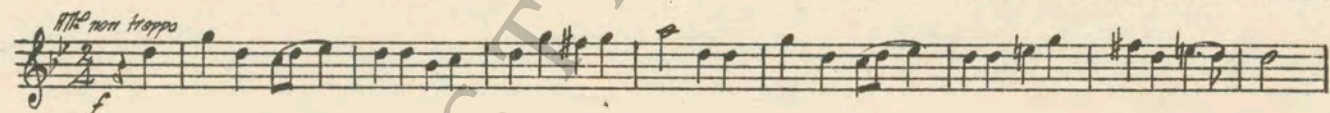
54 (Title) THE NEWS SPREAD THROUGH THE COURT Processional March (Ketelbey) 1¾ Min.



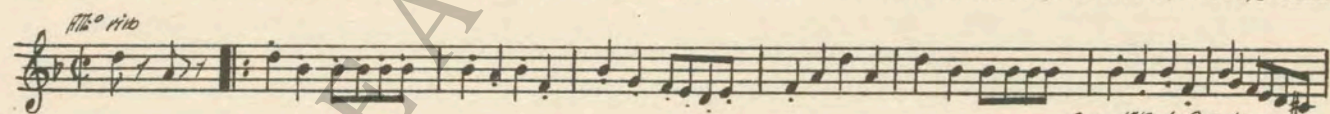
55 (Action) CATHERINE APPEARS IN COURT ROBES... NOTE: Silence when master of ceremonies appears and announces. Pour la Paix (Soler) 2¾ Min.



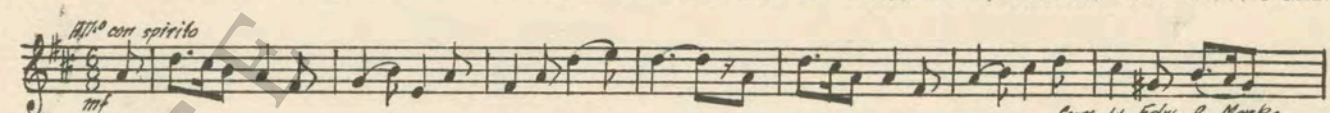
56 (Title) GET HER TO TELL YOU NOTE: Play "PP" as Catherine appears before Queen and Sister. Marquisette (Mouton) 1 Min.



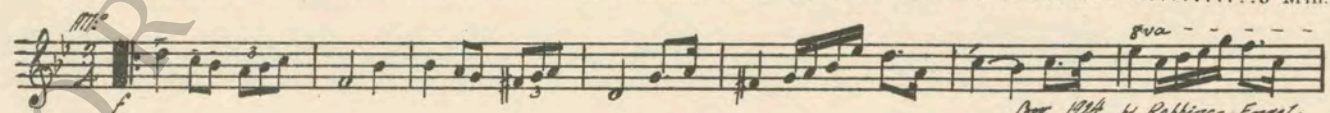
57 (Title) THE EVENING NEARED ITS CLOSE Gavotte (Raff) 1½ Min.



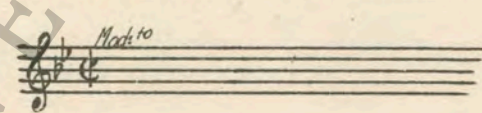
58 (Title) TO MARSHALL NEY Prince of Lood Fellows "Happyland" (DeKoven) 1 Min.



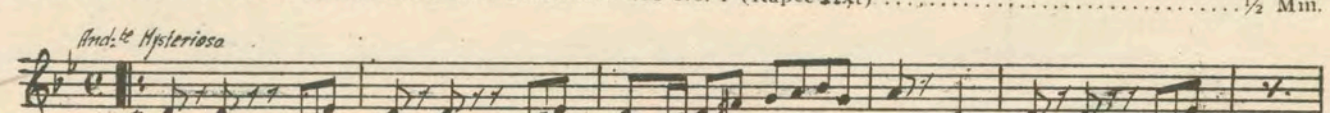
59 (Title) ONCE A VIVANDIERE NOTE: Diminish when women refuse to drink. Appassionato No. 2 (Axt) 3 Min.



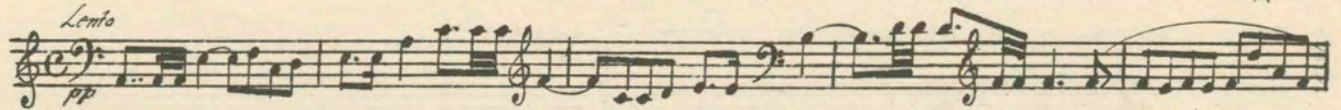
60 (Title) WITHIN AN HOUR Repeat Love Theme No. 18 1¼ Min.



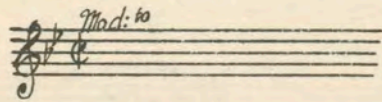
61 (Title) COUNT VON NEIPPERG RESPONDS Misterioso No. 1 (Rapee-Axt) ½ Min.



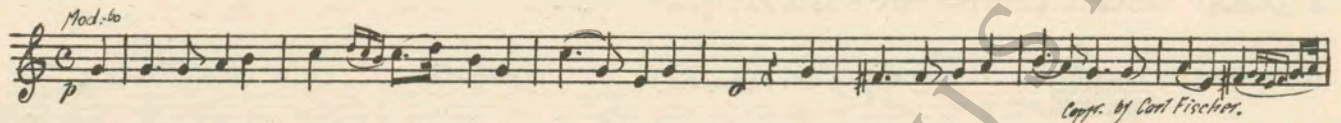
62 (Action) NAPOLEON AT DESK La Mer Sombre (Fosse) 2¼ Min.



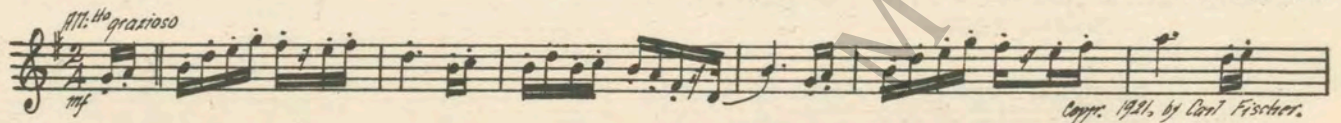
63 (Title) YOU ARE THE MASTER HERE SIRE Repeat Love Theme No. 18 1 Min.



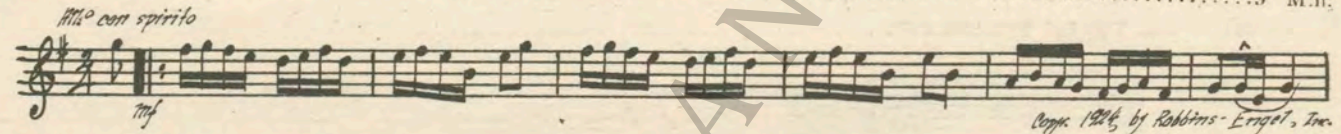
64 (Title) YOU ARE VERY BOLD Partant pour la Syrie 1¼ Min.



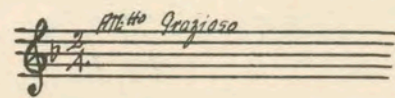
65 (Action) NAPOLEON TAKES HOLD OF HER EAR Little Coquette (Reiser) 1¼ Min.



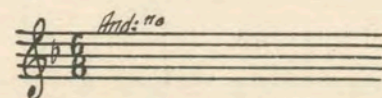
66 (Title) HOORAY! I NEVER DID Caiety (Savino) 3 Min.



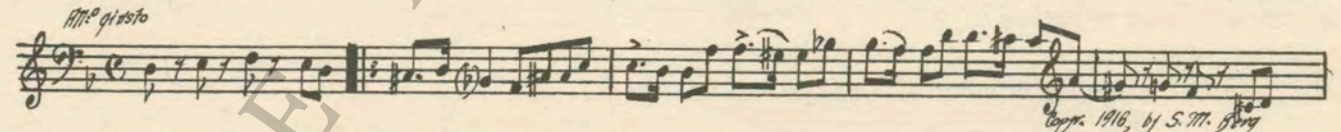
67 (Title) HOW MUCH DOES THE CITIZEN NAPOLEON OWE YOU Repeat Catherine Theme No. 8 1 Min.



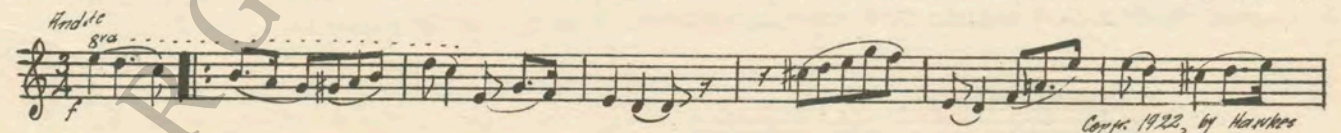
68 (Title) YOU KNOW THERE WAS A TIME Repeat Fascination Theme No. 6 1¼ Min.



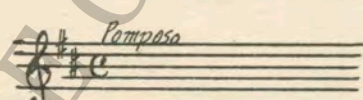
69 (Action) SERVANT OPENS DOOR — SEES VON NEIPPERG STEALING UPSTAIRS Misterioso Dramatico No. 22 (Borch) 1¼ Min.



70 (Title) WAIT HERE, I WILL TELL THE EMPRESS... Passionato (Borch) 2½ Min.



71 (Title) SEND FOR SAVARY Repeat No. 48 "Enemies of Women" 1 Min.



72 (Title) WE MUST SAVE HIM FOCHE Allegro Agitato (Savino) 3¾ Min.



73 (Title) THE PRISONER HAS BEEN PERMITTED L'Angoissante aventure (Gabriel Marie) 2¼ Min.

Musical notation for item 73, including tempo marking *And.te Sostenu.to* and copyright notice *Copy. by G. Ricordi & Cie.*

74 (Title) I'M GOING TO GET THE TRUTH Agitato No. 84 (Berge) 3¼ Min.

Musical notation for item 74, including tempo marking *Molto* and copyright notice *Copy 1922, by Ross Jundtrickel*

75 (Action) INSERT—LETTER: "MY DEAR FATHER"..... L'Exultante tendresse (Gabriel Marie) 1 Min

Musical notation for item 75, including tempo marking *Allo Appassionato*

76 (Action) EXTERIOR—VON NEIPPERG BEFORE FIRING SQUAD Angosciosamente (Gabriel Marie) 1¼ Min.

Musical notation for item 76, including tempo marking *Mto. vivo* and copyright notice *Copy. by G. Ricordi.*

77 (Title) HE TRIED TO ESCAPE Dawn (Geehl) 1¾ Min.

Musical notation for item 77, including tempo marking *Lento misterioso* and copyright notice *Copy 1922, by Gould & Baillier.*

78 (Title) YOUR MINISTER OF POLICE IS PROMPT ... Repeat Fouche Theme No. 22 2½ Min.

Musical notation for item 78, including tempo marking *Tempo di Marcia*

79 (Action) CATHERINE PICKS UP SWORD Please (Gourard) ¾ Min.

Musical notation for item 79, including tempo marking *Voce lento* and copyright notice *Copy 1914, by Edw. J. Marks.*

80 (Title) BUT FOUCHE Repeat Fouche Theme No. 22 1 Min.

Musical notation for item 80, including tempo marking *Tempo di Marcia*

81 (Action) NAPOLEON WALKS TOWARD CATHERINE .. Repeat No. 3 "La Marseillaise" ¾ Min.

Musical notation for item 81, including tempo marking *Maiestoso*

82 (Action) NOTE: Play "PP" and slowly. NAPOLEON WALKS FROM ROOM..... Repeat Love Theme No. 18 1 Min.

Musical notation for item 82, including tempo marking *Molto*

Country of Origin, U. S. A.

THE END

Complete Orchestrations and single parts of all compositions contained herein can be purchased from CAMEO MUSIC SERVICE CORPORATION, 112-118 West 44th Street, New York City

95:2046:1