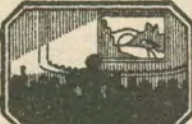


Thematic Music  Cue Sheet

M. J. MINTZ (PATENT)
JULY 31, 1923.

ADOLPH ZUKOR and JESSE L. LASKY

present

GLORIA SWANSON

IN

"MADAME SANS-GENE"

From the play by Victorien Sardou and Emile Moreau

Directed by Leonce Perret

Screen play by Forrest Halsey

Music compiled by James C. Bradford

Footage 9979 feet

A Paramount Picture



1 AT SCREENING Festival March (Borch) 1 3/4 Min.



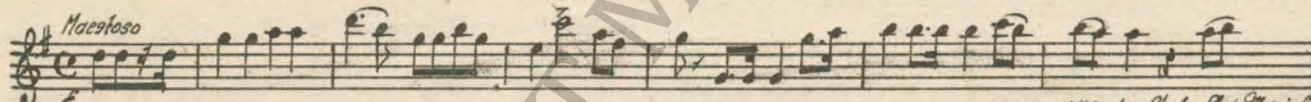
Comp. 1917, by G. Schirmer.

2 (Title) IN THE FIRST DAYS OF FRENCH REVOLUTION Vicissitudes et Triomphe (Gabriel Marie) 1 1/4 Min.



Comp. 1918, by Chopin

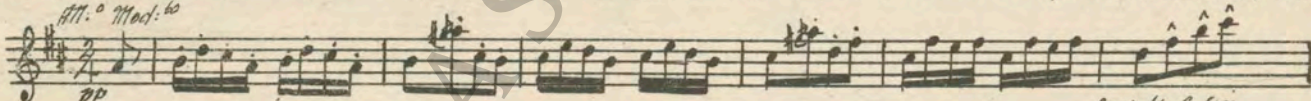
3 (Action) CATHERINE SMELLS BURNING CLOTH ... La Marseillaise 1 Min.



Comp. 1929, by Photo Play Musica Co.

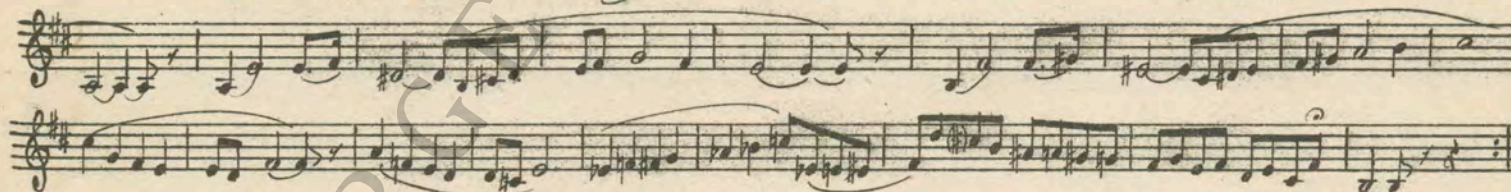
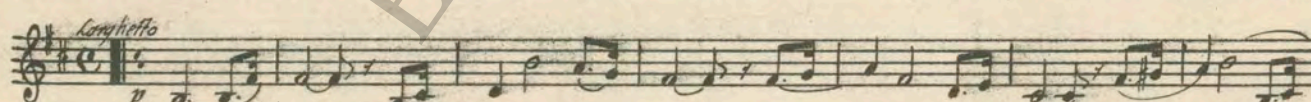
NOTE: Start "P" and work up to "FF" as workers start to sing. Direct Music Cue.

4 (Title) THE NAMES OF SOME OF Intermezzo Pizzicata (Nardon) 3/4 Min.



Comp. by F. Tosti.

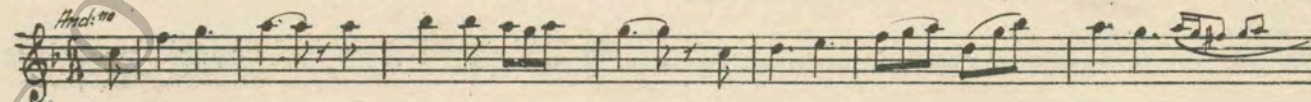
5 (Action) SILHOUETTE OF OFFICER APPEARS NAPOLEON THEME: Fantaisie Over. (Fauchey) 1 Min.



Comp. 1921, by Manns.

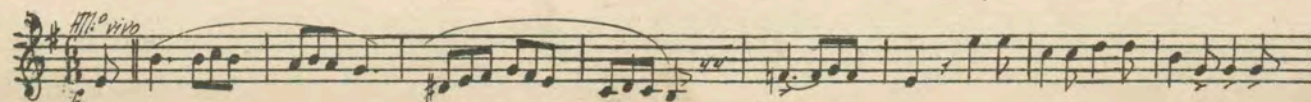
NOTE: Play Larghetto movement only.

6 (Action) INSERT -- LETTER FASCINATION THEME: Plaisir d'Amour (Martini) 3/4 Min.



Comp. by G. Schirmer.

7 (Title) DIRTY ARISTOCRATS Pifferari-Tarentelle (Nardon) 3/4 Min.



8 (Action) CATHERINE ALONE IN BOUDOIR CATHERINE THEME: Tres precieuse (Gabriel Marie) ... 2¾ Min.

Musical notation for item 8, including tempo marking *All. Mo Grazioso* and copyright notice *Copy. 1912, by Chappellier.*

9 (Title) AT LIEUTENANT BONAPARTE'S APARTMENT Repeat Napoleon Theme No. 5 1 Min.

Musical notation for item 9, including tempo marking *Allegretto*.

10 (Action) CATHERINE SITS ON ARM OF CHAIR Repeat Fascination Theme No. 6 2¼ Min.

Musical notation for item 10, including tempo marking *And. Mo*.

11 (Action) CATHERINE DROPS BASKET Repeat Catherine Theme No. 8 ¾ Min.

Musical notation for item 11, including tempo marking *All. Mo Grazioso*.

12 (Action) NAPOLEON SLAMS BOOK ON TABLE Dance des Serpents (Ahreuds) ½ Min

Musical notation for item 12, including tempo marking *All. Mo vivo* and copyright notice *Copy. 1911, by G. Schirmer.*

13 (Action) CATHERINE'S EXPRESSION SOFTENS Repeat Fascination Theme No. 6 ¾ Min.

Musical notation for item 13, including tempo marking *And. Mo*.

14 (Title) NOTE: Play "P" con sordini strings only and finish as Catherine quietly closes door
DISAPPOINTMENT WAS NEVER TRAGEDY .. Folies-Bergere (Lincke) 2½ Min.

Musical notation for item 14, including tempo marking *All. Mo vivo* and copyright notice *Copy. 1921, by Edw. B. Marks.*

15 (Action) CATHERINE RUSHES AWAY La Cuapa (Buisson) 1 Min.

Musical notation for item 15, including tempo marking *Tempo di Marcia*.

16 (Title) WITHIN A WEEK Repeat Catherine Theme No. 8 1¼ Min.

Musical notation for item 16, including tempo marking *All. Mo Grazioso*.

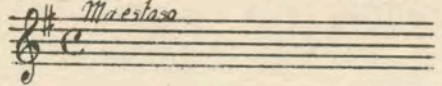
17 (Action) LEFEBVRE ENTERS Waltz-Scherzo (Straus) 1¼ Min.

Musical notation for item 17, including tempo marking *All. Mo* and copyright notice *Copy. 1919, by G. Schirmer.*

18 (Action) CATHERINE GRABS LEFEBVRE'S ARM LOVE THEME: Montmartre Rose (Lyman) 1 Min.

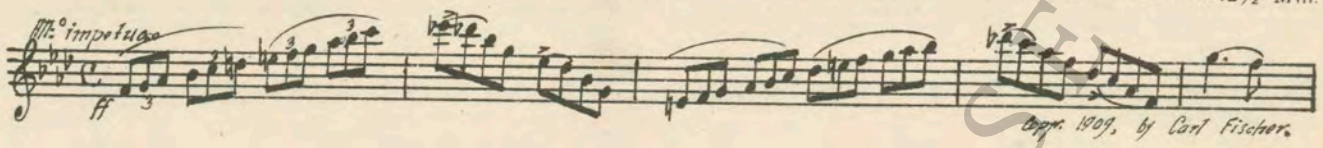
Musical notation for item 18, including tempo marking *Mod. to* and copyright notice *Copy. 1925, Marks Music Co.*

19 (Title) **THE TENTH OF AUGUST WHEN THE REVOLUTIONISTS** Repeat No. 3 "La Marseillaise" 1¼ Min.



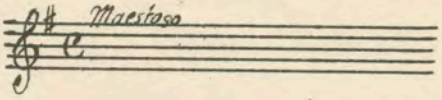
NOTE: Play very spirited, voices added if possible. Direct music cue.

20 (Action) **DRUMMERS CLOSE UP PLAYING ROLL** Robespierre Over. (Litoff) 2½ Min.

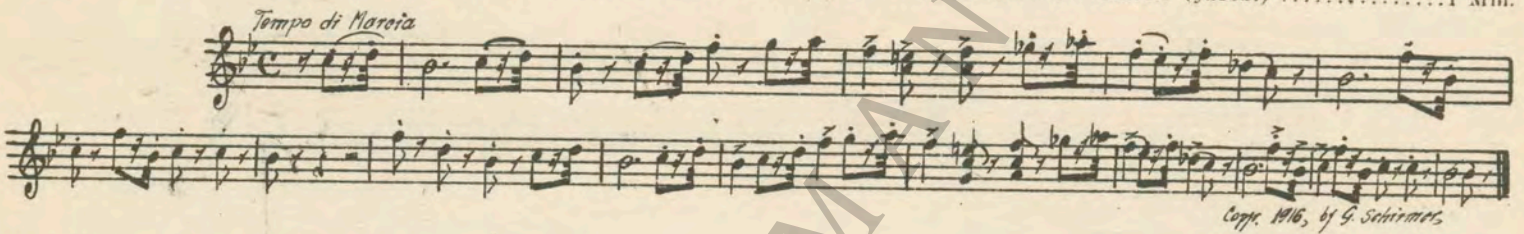


NOTE: Start at second Allegro Impetuoso and play toward end, working in Marseillaise. Battle effects ad lib; "P1" for flash-back to laundry.

21 (Action) **CATHERINE APPEARS AT HEAD OF CROWD ON STREET** Repeat No. 3 "La Marseillaise" 1¼ Min.



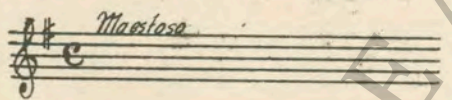
22 (Title) **I'VE SOME NEWS FOR YOU** FOUCHÉ THEME: Marche Miniature (Jacobi) 1 Min.



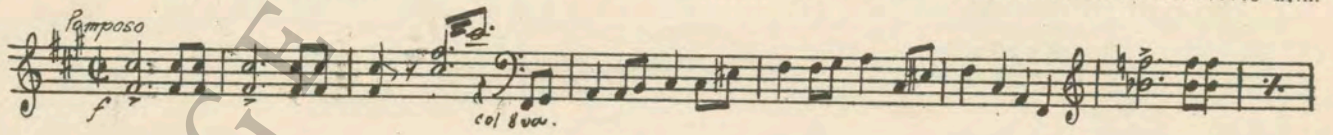
23 (Title) **THE REPUBLIC** Battle of Ypres (Borch) 1½ Min.



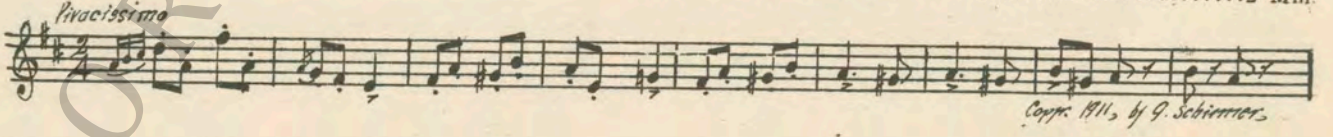
24 (Title) **THEN OUT OF CHAOS** Repeat No. 3 "La Marseillaise" ¾ Min.



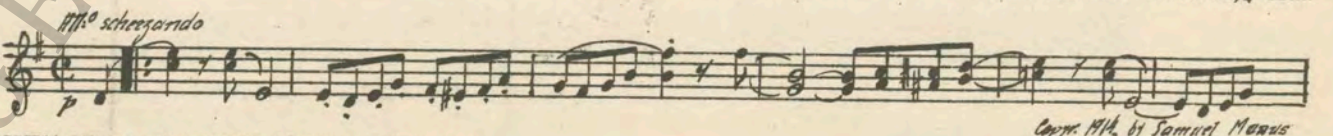
25 (Title) **FONTAINEBLEAU** Cortège Louis XIII (Fauchey) 3 Min.



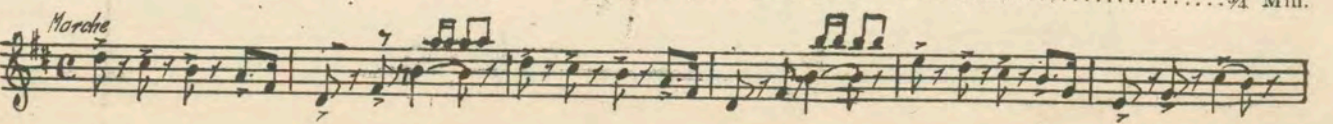
26 (Action) **CATHERINE APPEARS** Suzanne's Secret (Wolf-Ferrari) 2 Min.



27 (Title) **DOES YOUR GRACE REMEMBER** Midsummer (Maquarre) 1¼ Min.



28 (Title) **WHEN WE LAST MET, YOU SAVED MY LIFE** La P'Tit Soldat (Soler) ¾ Min.



29 (Action) FLASH-BACK TO CATHERINEDanse des Bouffons (Korsakow)1¼ Min.

Vivace
Musical notation for 'Flash-back to Catherine' by Korsakow, featuring a treble clef, 2/4 time signature, and a key signature of one flat. The piece is marked 'Vivace' and includes a copyright notice for 1925 by G. Schirmer.

30 (Action) EXTERIORPatrie (Bizet)1½ Min.

Mod.to
ff
Musical notation for 'Exterior' by Bizet, featuring a treble clef, 2/4 time signature, and a key signature of one flat. The piece is marked 'Mod.to' and 'ff', and includes a copyright notice for 1919 by Carl Fischer.

31 (Action) CATHERINE SEES ROUSETTA IN CROWD...Knighthood Love Theme (Peters)1¼ Min.

And.to esp. ras
p
Musical notation for 'Knighthood Love Theme' by Peters, featuring a treble clef, 2/4 time signature, and a key signature of one flat. The piece is marked 'And.to esp. ras' and 'p', and includes a copyright notice for 1928 by Robbins-Engel, Inc.

32 (Action) BOTH ENTER CARRIAGE AND DRIVE AWAY.Fete Boheme (Massenet)1¼ Min.

All.to Mod.to
Musical notation for 'Fete Boheme' by Massenet, featuring a treble clef, 2/4 time signature, and a key signature of one flat. The piece is marked 'All.to Mod.to' and includes a copyright notice for 1907 by Carl Fischer.

33 (Title) THE MANSION OF THE DUKE AND DUCHESS OF DANZIGEscapade (Mouton)1½ Min.

Tempo di Gavotte
p
Musical notation for 'Escapade' by Mouton, featuring a treble clef, 2/4 time signature, and a key signature of one flat. The piece is marked 'Tempo di Gavotte' and 'p'.

34 (Action) MAN SERVANT ENTERSChez Mere Grand (Mouton)¾ Min.

Mysterioso
Musical notation for 'Chez Mere Grand' by Mouton, featuring a treble clef, 2/4 time signature, and a key signature of one flat. The piece is marked 'Mysterioso' and includes a copyright notice for J. Mee.

NOTE: Play slowly as a mysterioso, first strain only.

35 (Action) HE CLOSES DOORPremier Reve (Mouton)1 Min.

All.to Mod.to
p
Musical notation for 'Premier Reve' by Mouton, featuring a treble clef, 2/4 time signature, and a key signature of one flat. The piece is marked 'All.to Mod.to' and 'p'.

36 (Action) CATHERINE PATS ROUSETTA ON CHEEK..Valse Pathetique (Onivas)1 Min.

Tempo di Valse
p
Musical notation for 'Valse Pathetique' by Onivas, featuring a treble clef, 2/4 time signature, and a key signature of one flat. The piece is marked 'Tempo di Valse' and 'p', and includes a copyright notice for Edu. B. Marks.

37 (Action) GENTLEMAN KISSES CATHERINE'S HAND.Gigue (Gretv-Mottl)2½ Min.

All.to
Musical notation for 'Gigue' by Gretv-Mottl, featuring a treble clef, 2/4 time signature, and a key signature of one flat. The piece is marked 'All.to' and includes a copyright notice for 1916 by Carl Fischer.

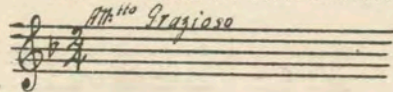
38 (Title) CHAMPAGNETambourin (Gretv-Mottl)1 Min.

Presto
pp
Musical notation for 'Tambourin' by Gretv-Mottl, featuring a treble clef, 2/4 time signature, and a key signature of one flat. The piece is marked 'Presto' and 'pp', and includes a copyright notice for 1916 by Carl Fischer.

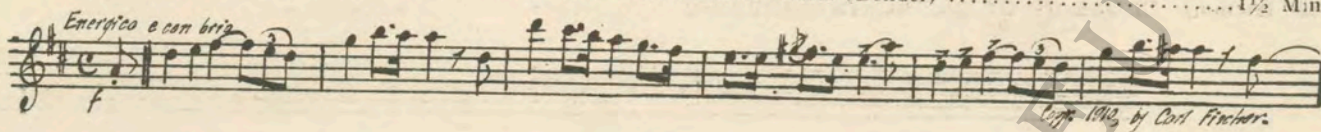
39 (Action) NAPOLEON IN STUDYRepeat Napoleon Theme No. 51½ Min.

Capriccio
Musical notation for 'Repeat Napoleon Theme No. 5', featuring a treble clef, 2/4 time signature, and a key signature of one flat. The piece is marked 'Capriccio'.

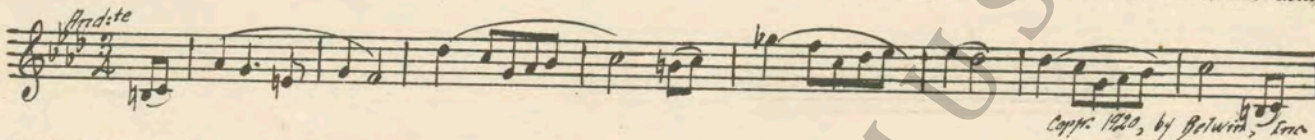
40 (Title) THE APARTMENTS OF THE DUCHESS OF DANZIG Repeat Catherine Theme No. 8 ¼ Min.



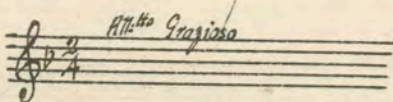
41 (Action) FLASH-BACK TO STEPS—NAPOLEON APPEARS (Une Promenade de Matin (Bendel) 1½ Min.



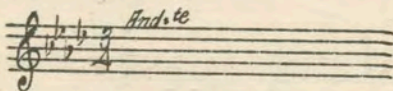
42 (Title) IT IS THE EMPEROR'S WISH Chanson Melancholique (Collinge) 1 Min.



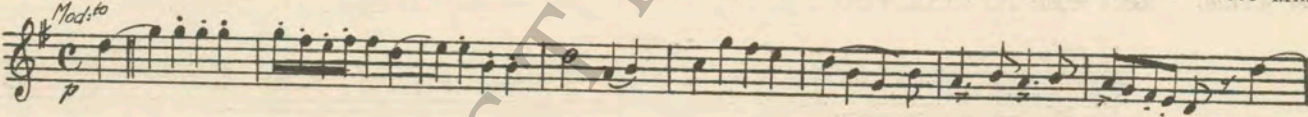
43 (Action) CATHERINE APPEARS ON STEPS Repeat Catherine Theme No. 8 1 Min.



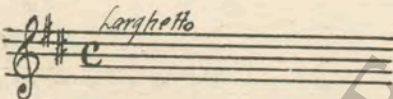
44 (Action) CATHERINE SPEAKS TO VON NEIPPERG Repeat No. 42 "Chanson Melancholique" 1 Min.



45 (Title) YOUR MAJESTY IS MISTAKEN Premier Bonheur (Salabert) 1 Min.



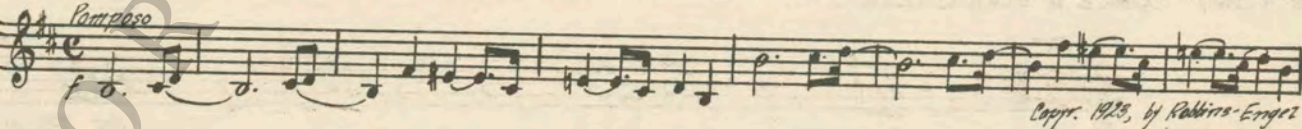
46 (Action) NAPOLEON IN STUDY—SISTER ENTERS Repeat Napoleon Theme No. 5 1¼ Min.



47 (Action) CATHERINE TALKING TO VON NEIPPERG. Desesperance (Pesse) 1¼ Min.



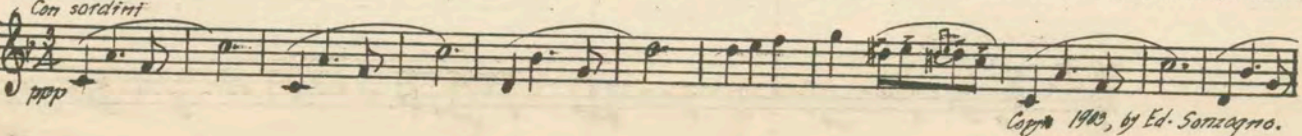
48 (Action) FLASH-BACK TO NAPOLEON—LEFEBVRE ENTERS Enemies of Women (Peters) 1 Min.



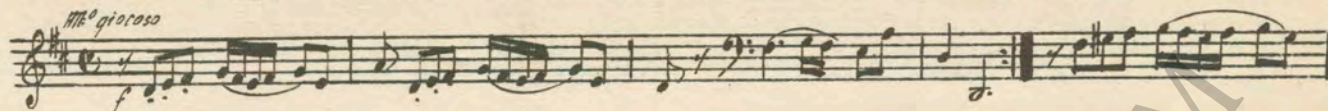
49 (Action) LEFEBVRE SPEAKS TO CATHERINE Motto Leggiero (Moulton) 1 Min.



50 (Title) THE EMPEROR'S SISTERS HAVE COMPLAINED Adriana Leconvreur (Cifea) 2½ Min.



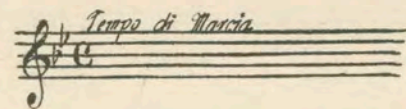
51 (Title) I ALMOST FORGOT Jovialities (Gabriel Marie) 1 3/4 Min.



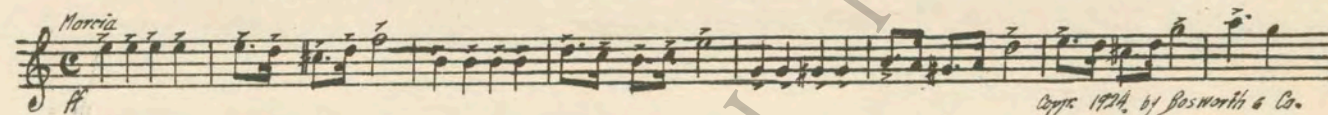
52 (Action) CLOSE-UP OF CATHERINE WEeping Les Champs (Bradford-Boutelje) 1 1/4 Min.



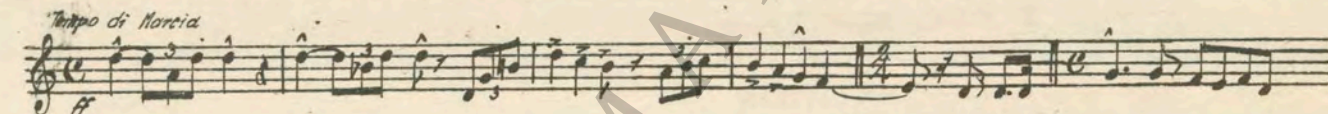
53 (Action) FOUche TAKES OUT SNUFF BOX Repeat Fouche Theme No. 22 3/4 Min.



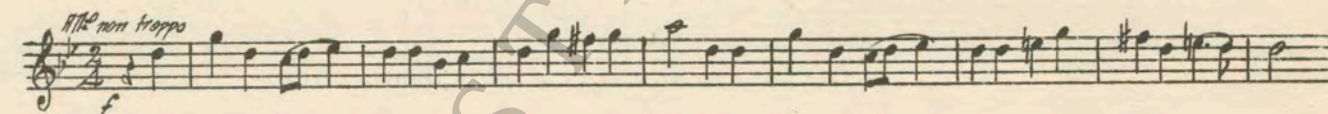
54 (Title) THE NEWS SPREAD THROUGH THE COURT Processional March (Ketelbey) 1 3/4 Min.



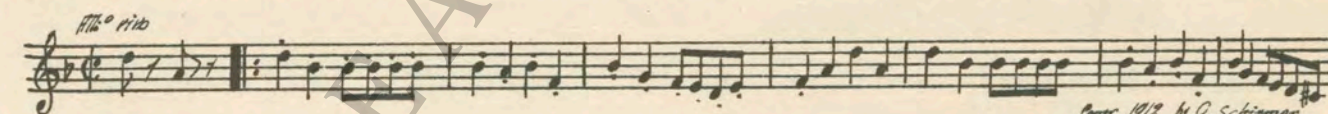
55 (Action) CATHERINE APPEARS IN COURT ROBES... Pour la Paix (Soler) 2 3/4 Min.



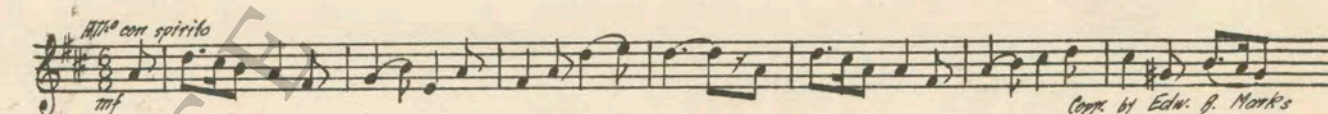
56 (Title) GET HER TO TELL YOU Marquissette (Mouton) 1 Min.



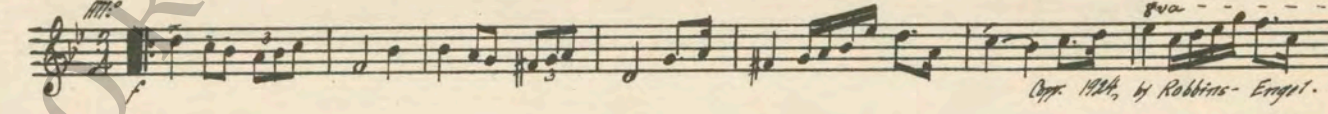
57 (Title) THE EVENING NEARED ITS CLOSE Gavotte (Raff) 1 1/2 Min.



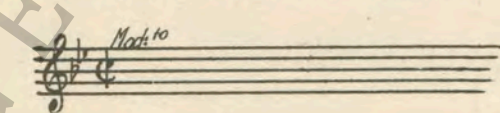
58 (Title) TO MARSHALL NEY Prince of Good Fellows 'Happyland' (DeKoven) 1 Min.



59 (Title) ONCE A VIVANDIERE Appassionato No. 2 (Axt) 3 Min.



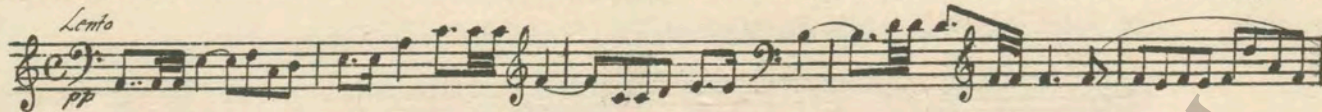
60 (Title) WITHIN AN HOUR Repeat Love Theme No. 18 1 1/4 Min.



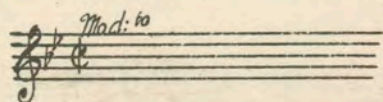
61 (Title) COUNT VON NEIPPERG RESPONDS Misterioso No. 1 (Rapee-Axt) 1/2 Min.



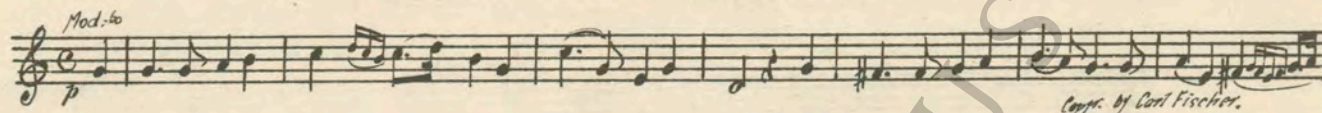
62 (Action) NAPOLEON AT DESK La Mer Sombre (Fosse) 2¼ Min.



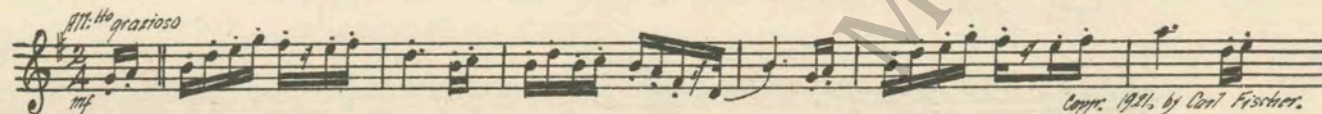
63 (Title) YOU ARE THE MASTER HERE SIRE Repeat Love Theme No. 18 1 Min.



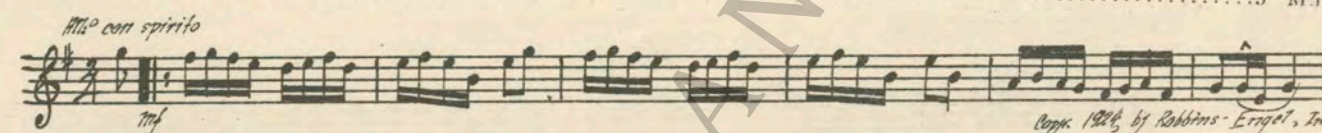
64 (Title) YOU ARE VERY BOLD Partant pour la Syrie 1¼ Min.



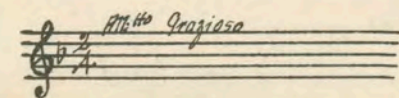
65 (Action) NAPOLEON TAKES HOLD OF HER EAR Little Coquette (Reiser) 1¼ Min.



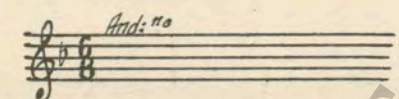
66 (Title) HOORAY! I NEVER DID Caity (Savino) 3 Min.



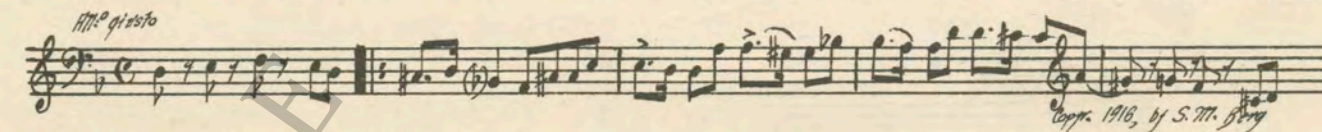
67 (Title) HOW MUCH DOES THE CITIZEN NAPOLEON OWE YOU Repeat Catherine Theme No. 8 1 Min.



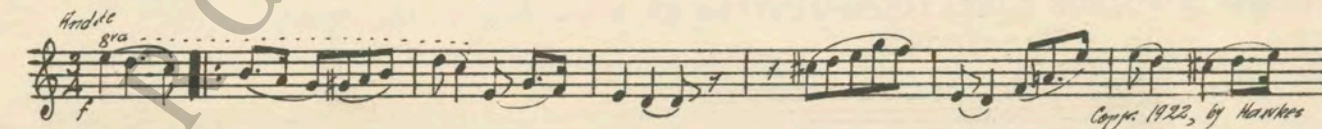
68 (Title) YOU KNOW THERE WAS A TIME Repeat Fascination Theme No. 6 1¾ Min.



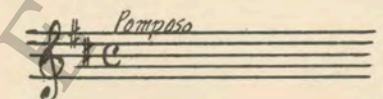
69 (Action) SERVANT OPENS DOOR — SEES VON NEIPPERG STEALING UPSTAIRS Misterioso Dramatico No. 22 (Borch) 1¼ Min.



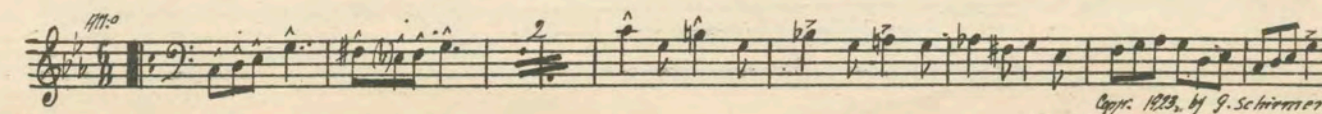
70 (Title) WAIT HERE, I WILL TELL THE EMPRESS.. Passionato (Borch) 2½ Min.



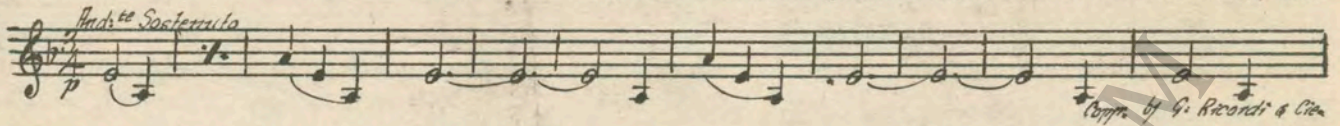
71 (Title) SEND FOR SAVARY Repeat No. 48 "Enemies of Women" 1 Min.



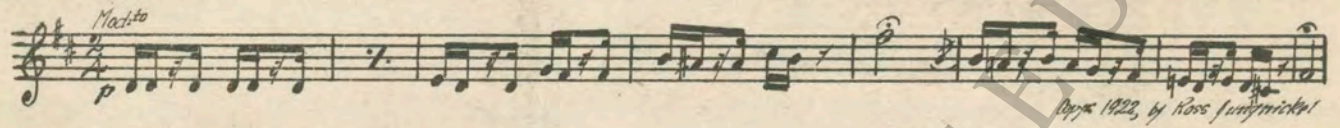
72 (Title) WE MUST SAVE HIM FOCHE Allegro Agitato (Savino) 3¾ Min.



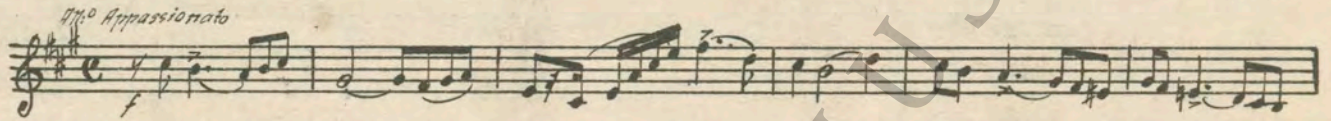
73 (Title) THE PRISONER HAS BEEN PERMITTED L'Angoissante aventure (Gabriel Marie) 2¼ Min.

And.^{te} Sospensivo

Copr. by G. Ricordi & Co.

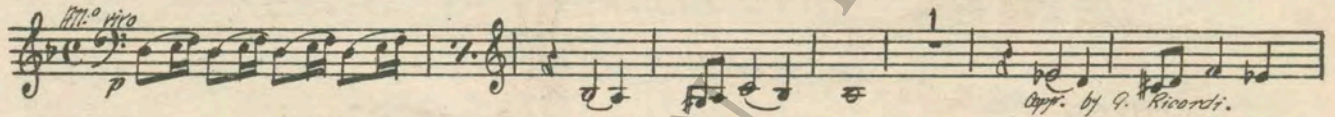
74 (Title) I'M GOING TO GET THE TRUTH Agitato No. 84 (Berge) 3¼ Min.

Maest.

Copr. 1922, by Ross Jundzicki

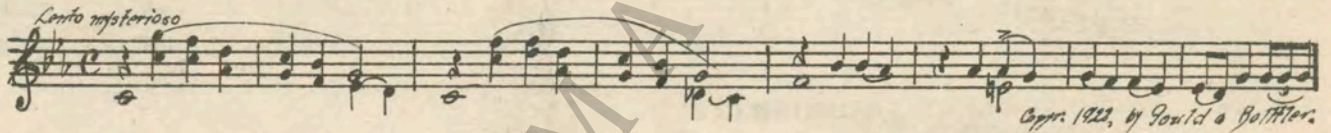
75 (Action) INSERT—LETTER: "MY DEAR FATHER"..... L'Exultante tendresse (Gabriel Marie) 1 Min.

Al.^o Appassionato


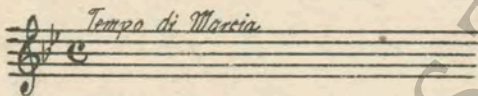
76 (Action) EXTERIOR—VON NEIPPERG BEFORE FIRING SQUAD Angosciosamente (Gabriel Marie) 1¼ Min.

All.^o vivo

Copr. by G. Ricordi.

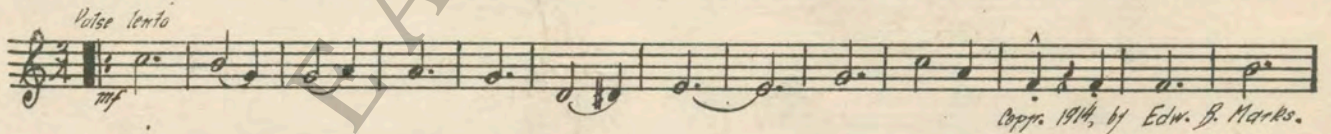
77 (Title) HE TRIED TO ESCAPE Dawn (Geehl) 1¾ Min.

Lento misterioso

Copr. 1922, by Gould & Butler.

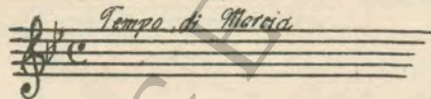
78 (Title) YOUR MINISTER OF POLICE IS PROMPT ... Repeat Fouche Theme No. 22 2½ Min.

Tempo di Marcia


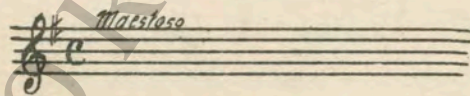
79 (Action) CATHERINE PICKS UP SWORD Please (Gourard) ¾ Min.

Piace lento
mf

Copr. 1914, by Edw. B. Marks.

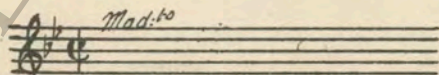
80 (Title) BUT FOCHE Repeat Fouche Theme No. 22 1 Min.

Tempo di Marcia


81 (Action) NAPOLEON WALKS TOWARD CATHERINE... Repeat No. 3 "La Marseillaise" ¾ Min.

Maestoso


82 (Action) NOTE: Play "PP" and slowly. NAPOLEON WALKS FROM ROOM..... Repeat Love Theme No. 18 1 Min.

Mad.^{to}


Country of Origin, U. S. A.

THE END

Complete Orchestrations and single parts of all compositions contained herein can be purchased from CAMEO MUSIC SERVICE CORPORATION, 112-118 West 44th Street, New York City

95-2046-2