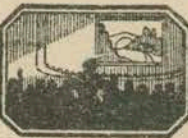


Thematic Music  Cue Sheet

M. J. MINTZ (PATENT)
JULY 31, 1923.

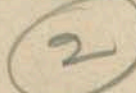
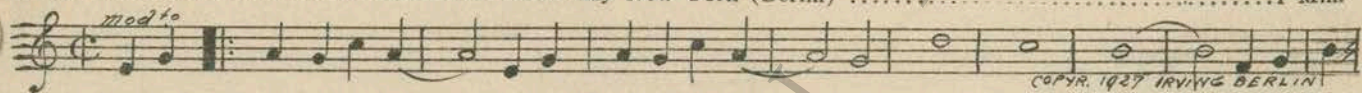


ADOLPH ZUKOR and JESSE L. LASKY
present
"MANHATTAN COCKTAIL"

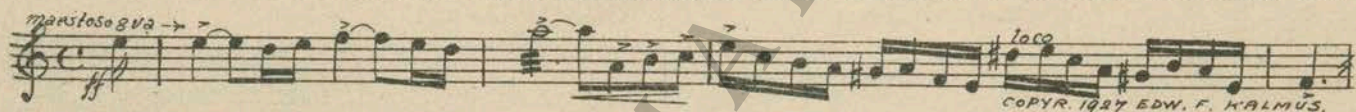
with
Nancy Carroll and Richard Arlen
Directed by Dorothy Arzner
Story by Ernest Vajda
Screen play by Ethel Doherty
B. P. Schulberg, General Manager, West Coast Productions
Compiled by James C. Bradford
Footage 6051 feet

A Paramount Picture

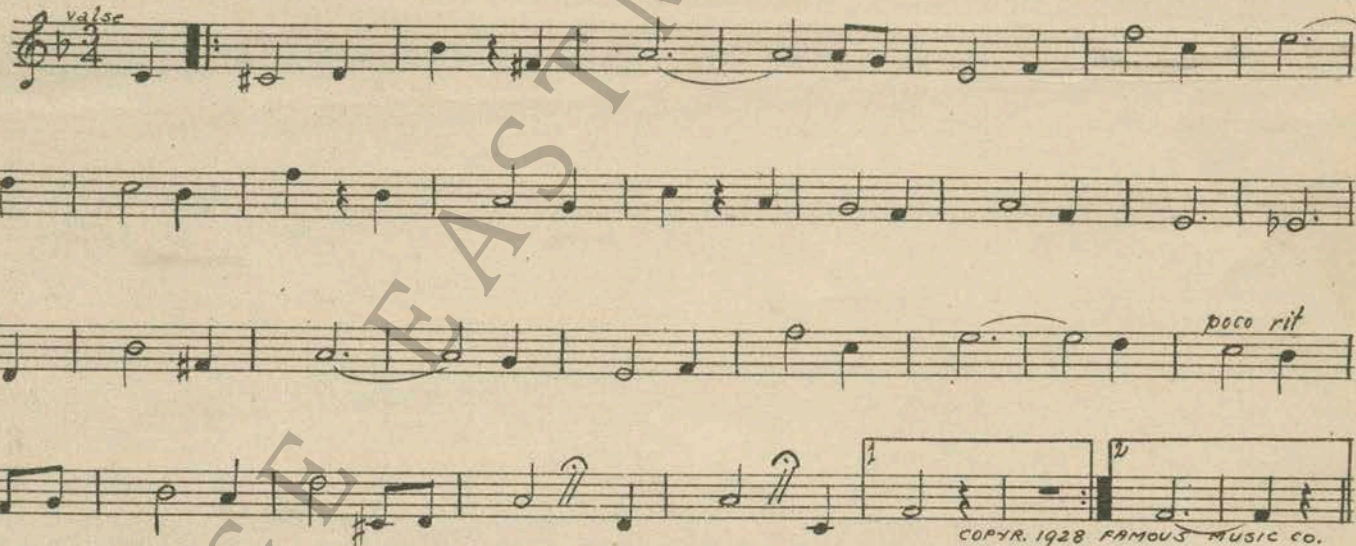
1 AT SCREENING My New York (Berlin) 1 Min.

2  *mod to*  COPYR. 1927 IRVING BERLIN

2 (Title) ANCIENT GREECE Desert Caravan (Friml) 2 1/4 Min.

maestoso gva  *loco* COPYR. 1927 EDW. F. KALMUS

3 (Action) GIRL DESCENDING DARK STAIRS THEME: Another Kiss 3/4 Min.

Theme *valse*  *poco rit* COPYR. 1928 FAMOUS MUSIC CO.

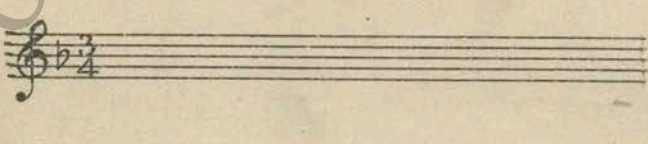
4 (Action) GUARDS APPEAR Desert Caravan (Friml) (from letter A) 3/4 Min.

maestoso  COPYR. 1927 EDWIN F. KALMUS

5 (Action) SHADOWS STRUGGLING IN DARK The Conspirators (Roder) 1/2 Min.

agitato misterioso  COPYR. 1927 EDW. F. KALMUS INC

6 (Action) LOVERS EMBRACE Repeat Theme No. 3 3/4 Min.

Theme 

"Modern America"

7 (Title) MODERN AMERICA Repeat No. 1 "My New York" 1/2 Min.

② *mod^{to}*

8 (Title) WHILE IN AN UPSTATE COLLEGE Frat (Barth) 1 1/4 Min.

march

COPYR. 1910 SAM FOX PUB. CO.

9 (Action) GIRLS RUN AWAY He's A Ladies' Man (Henderson) 1/2 Min.

dance^{ts}
Foster

COPYR. 1927 DE SYLVA, BROWN, HENDERSON, INC.

10 (Action) DANCING STOPS Repeat Theme No. 3 2 1/2 Min.

① *walse*

11 (Action) NEW YORK FLASH-BACK Repeat No. 1 "My New York" 1/2 Min.

② *mod^{to}*

12 (Action) INSERT—AGENCY DOOR Reverie d'Amour (D'Aquin) 3/4 Min.

NOTE: Effects of elevated railway, etc.
And^{mo}

COPYR. 1925 SONNEMANN

13 (Action) HOTEL LOBBY Whitecaps (Schad) 1 Min.

mod^{to}
mf

COPYR. 1928 BELWIN INC.

14 (Action) BOB FOLLOWS WAITER INTO PRIVATE PARTY ROOM Ain't We Got Fun (Whiting) 1 1/4 Min.

fox trot

COPYR. 1921 JEROME H. REMICK CO.

15 (Action) INSERT—"BORIS RENOV" Intermezzo Giocoso (Egener) 2 1/4 Min.

NOTE: Play as Piano Solo ad lib.
sch^{erz}ando
mf

COPYR. 1927 BARON (IRV. BERLIN)

16 (Title) MARKY'S THE NAME A Rube Festival (Peele) 1 Min.

mf

COPYR. 1928 BELWIN INC.

17 (Action) FRED SEATED AT DESK Repeat Theme No. 3 1 1/4 Min.

① *walse*

18 (Action) TIMES SQUARE—NEW YORK CITY Streets of New York from "Red Mill" (Herbert) 1/2 Min.

walse
mf

COPYR. 1916 WITMARK & SONS

19 (Action) BABS ENTERS STAGE DOOR Mariette-Coquette (Ancliffe) 3/4 Min.

mod^{to}
Kiki
p

COPYR. 1925 BESWORTH & CO.

20 (Action) **RENOV PLAYING PIANO** The Best Things In Life Are Free (Henderson) ¾ Min.

mod^{to}
mf

COPYR. 1927 De Sylva, Brown & Henderson

21 (Action) **RENOV STOPS PLAYING AND GRABS BABS** Agitato Pathetic (Kilenyi) ¾ Min.

alleg^{mod}

COPYR. 1927 ROBBINS MUSIC CORP.

22 (Action) **BABS LEAVES ROOM** I'm Sitting On Top of the World (Henderson) ½ Min.

mod^{to}
p

COPYR. 1925 LEO. FEIST INC.

23 (Action) **BABS MEETS FRED** Repeat Theme No. 3 1 Min.

①
waltz

COPYR. 1925 LEO. FEIST INC.

24 (Action) **REHEARSAL** Jane (Bibo) 1 Min.

dance tempo
mf

COPYR. 1928 BIBO - BLOEDON & LANG.

25 (Title) **BE NICE TO ME BABS** Canzonetta (Carrozini) ½ Min.

All^{to}
p

COPYR. 1925 FEATURE MUSIC PUBL. CO

26 (Action) **PIANIST STARTS TO PLAY** Repeat Theme No. 3 1 ¼ Min.

①
waltz

COPYR. 1925 LEO. FEIST INC.

27 (Action) **SHE FINISHES SONG** Recitatif Dramatique No. 1 (Baron) 1 Min.

LENTO
p
Legende - simple

COPYR. 1926 M. BARON

28 (Action) **WIFE APPEARS** Princess Pat Waltzes (Herbert) (From No. 2) 1 Min.

And^{te}

COPYR. 1915 WITMARK & SONS.

29 (Action) **CHORUS REHEARSING** When Sweet Susie Goes Steppin' By (Bibo) 1 Min.

mod^{to}
mf

COPYR. 1928 BIBO, BLOEDON & LANG

30 (Title) **SLICE THAT HAM** En Chevauchant (Gillet) 1 Min.

All^o molto morb^o
f

COPYR. 1926 MANUS CO

31 (Action) **BABS AND FRED ON PARK BENCH** Jealous (Little) 1 ½ Min.

mod^{to}

COPYR. 1924 HENRY WATERSCH

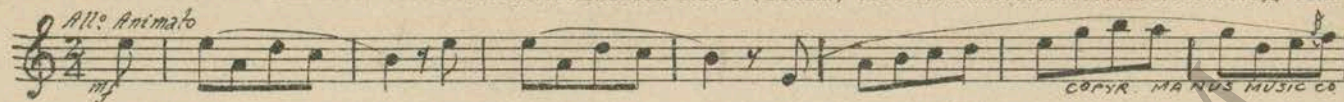
32 (Action) **MRS. RENOV AND BOB IN APARTMENT** Serenade (Rachmaninoff) 1 ½ Min.

waltz
mf

COPYR. 1918 CARL FISCHER

D - Renov enters Room

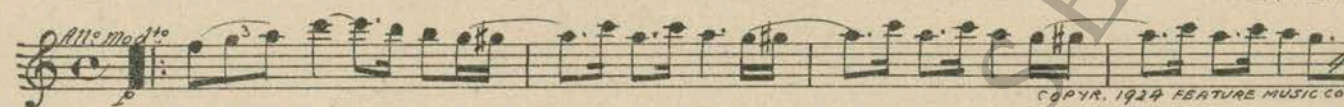
33 (Action) RENOV ENTERS ROOM Chanson Naive (Tellam) 1¾ Min.



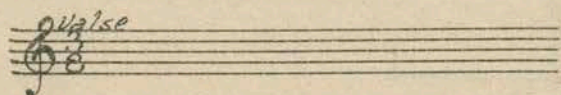
34 (Action) RESTAURANT The Song is Ended (Berlin) 1¾ Min.



35 (Action) STAGE ENTRANCE TO THEATRE Garden Whispers (Herkan) 1¾ Min.



36 (Action) MRS. RENOV AND NEW BOY FRIEND Repeat No. 32 "Serenade" 1 Min.



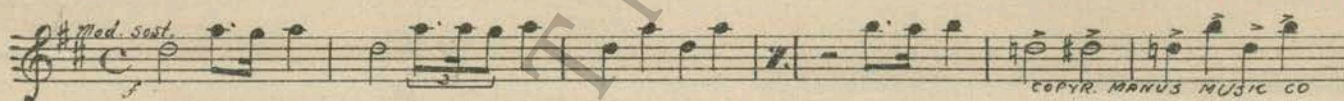
37 (Action) FRED AT CASHIER'S WINDOW IN BANK.... Implorations (Pasternack) 2¼ Min.



38 (Action) BABS AND FRED IN JAIL Heartaches (Pasternack) 3 Min.



39 (Action) INSERT—VISION OF \$5,000 Poeme Dramatique (Fourdrain) 1¾ Min.



40 (Action) RENOV AT DESK IN PRIVATE OFFICE Air de Ballet (Massenet) 3 Min.



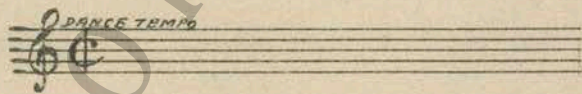
41 (Action) FRED TELEPHONES TO BABS Romantique (Gabriel Marie) 3 Min.



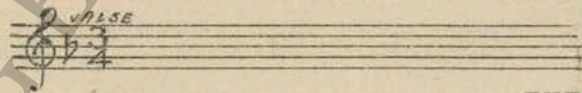
42 (Action) ELECTRICAL DISPLAY OF STREET ADVERTISING The Fall of Pompei (Leuschner) 3½ Min.



43 (Action) ORCHESTRA PLAYING OVERTURE Repeat No. 24 "Jane" 1¾ Min.



44 (Action) BABS AND FRED IN TAXI Repeat Theme No. 3 ¾ Min.



THE END

Country of Origin, U. S. A.

Complete orchestrations and single piano parts of each separate number contained hereon, can be purchased from CAMEO MUSIC SERVICE CORPORATION, 315-317 WEST 47TH STREET, NEW YORK CITY.

95:207021