

Sat - Feb 20

Thematic Music Cue Sheet

M. J. MINTZ (PATENT)
JULY 31, 1923

ADOLPH ZUKOR and JESSE L. LASKY
present

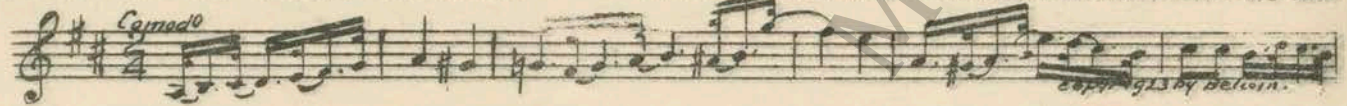
A James Cruze Production
Fannie Hurst's \$50,000 Liberty Magazine Prize Story
"MANNEQUIN"

with
Alice Joyce, Warner Baxter, Dolores Costello and ZaSu Pitts
Adapted by Walter Woods
Screen play by Frances Agnew
Music compiled by James C. Bradford
Footage 6981 feet

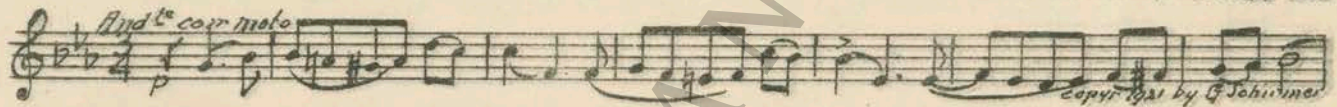


A Paramount Picture

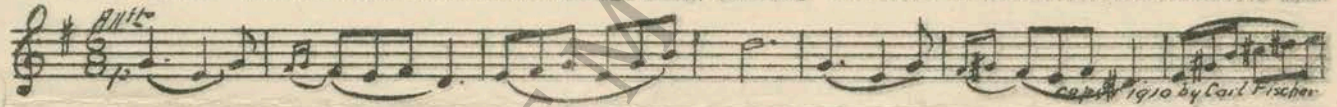
1 AT SCREENING Lower Garden (Breil) 2 1/2 Min.



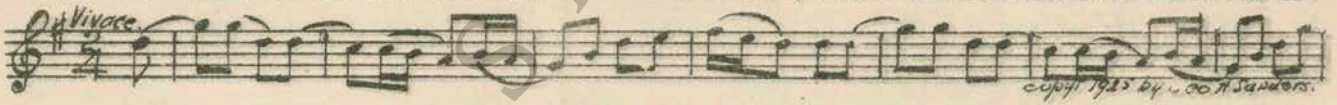
2 (Action) ANNIE SEATED ON BENCH Love Scene (Vessey) 1 1/4 Min.



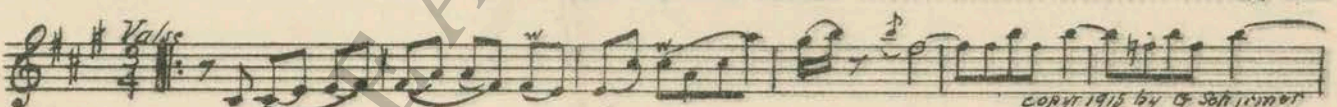
3 (Action) MRS. HERRICK ENTERS APARTMENT WITH CHILD Swing Song (Barnes) 2 Min.



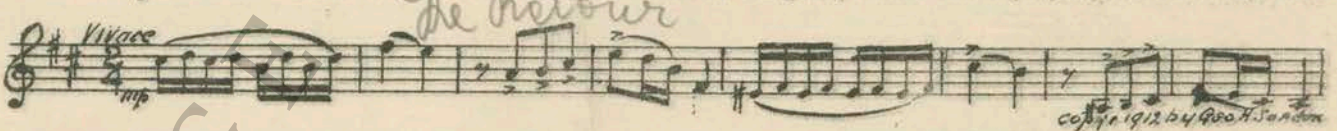
4 (Action) HUSBAND ENTERS Rush Hours (Sanders) 1 1/4 Min.



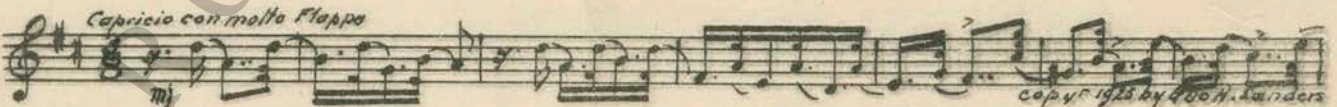
5 (Title) SEVEN A. M. Petite Bijouterie (Bohm) 1 1/4 Min.



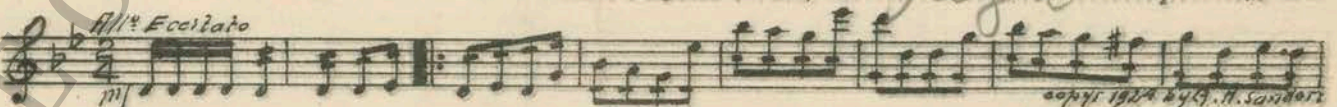
6 (Action) ANNIE APPEARS AT DOOR Scenes from an Imaginary Ballet No. 1 (Taylor) 3 1/2 Min.



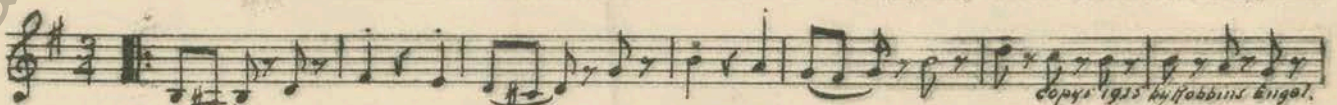
7 (Action) AUCTION ROOMS The Flapper (Srawley) 2 1/2 Min.



8 (Action) HUSBAND ENTERS HOME Moto Perpetuo (Weiss) 2 1/4 Min.



9 (Action) ANNIE ON PATH WITH CARRIAGE Second Misterioso a la Vaise (Savino) 1 1/4 Min.



If a White Horse

10 (Title) IF A WHITE HORSE Agitato No. 84 (Berge) 74 Min.

Musical notation for 'IF A WHITE HORSE' with tempo marking 'Mod^{to}' and copyright 'Copyright 1918 by Jungnickel.'

11 (Title) AFTER THREE LONG DAYS Dramatic Tension (Noyes) 1 1/4 Min.

Musical notation for 'AFTER THREE LONG DAYS' with tempo marking 'Molto Mod^{to}' and copyright 'Copyright 1918 by Haworth & Son.'

12 (Action) ANNIE AND CHILD Sleep Eyes (Finston) 1 1/2 Min.

Musical notation for 'ANNIE AND CHILD' with tempo marking 'Mod^{to} tranquillo' and copyright 'Copyright 1918 by Foster Music Co'. Includes handwritten note 'Night Song - Dulce'.

13 (Title) IT'S NO USE MOTHER Love's Wilfulness (Barthelemy) 1 1/4 Min.

Musical notation for 'IT'S NO USE MOTHER' with tempo marking 'And^{te} appassionato' and copyright 'Copyright by G. Schirmer'.

14 (Title) WHERE'S ANNIE Epilogo (Gabriel Marie) 1 1/2 Min.

Musical notation for 'WHERE'S ANNIE' with tempo marking 'And^{te} non troppo' and copyright 'Copyright 1918 by Ricordi'.

15 (Title) THE FIRST OF MAY, 1925 Puzanna (Pruessner) 1 1/4 Min.

Musical notation for 'THE FIRST OF MAY, 1925' with tempo marking 'Mod^{to}' and copyright 'Copyright 1925 by Victor Music Co.'

16 (Title) IN THE FOUR YEARS THAT FOLLOVED Chant au Soir (Schmitt) 1 Min.

Musical notation for 'IN THE FOUR YEARS THAT FOLLOVED' with tempo marking 'Calme' and copyright 'Copyright 1925 by Rouart, Laroche'.

17 (Action) ANNIE AND MAN FRIED IN ROOM Wotan (Rietter) (First Movement) 1 3/4 Min.

Musical notation for 'ANNIE AND MAN FRIED IN ROOM' with tempo marking 'And^{te} Maestoso' and copyright 'Copyright 1922 by Salabert'.

18 (Title) IT'S NANA AND THAT MAN Wotan (Rietter) (Second Movement) 3/4 Min.

Musical notation for 'IT'S NANA AND THAT MAN' with tempo marking 'Calme' and copyright 'Copyright 1922 by Salabert'.

19 (Title) THEN CAME THE EARLY Songe d'Amour (Ascher) 1 1/2 Min.

Musical notation for 'THEN CAME THE EARLY' with tempo marking 'Valse' and copyright 'Copyright 1922 by E. Ascher'.

20 (Title) WANT TO STEP OUT Charleston (Johnson) 1/2 Min.

Musical notation for 'WANT TO STEP OUT' with tempo marking 'Mod^{to}' and copyright 'Copyright 1923 by Harms Inc.'

21 (Action) INSERT CARD Intermezzo (Huertter) 1 1/2 Min.

Musical notation for 'INSERT CARD' with tempo marking 'Mod^{to}' and copyright 'Copyright 1913 by Boston Music Co.'

Handwritten note: 'Eva Prentiss' with a bracket pointing to items 14, 15, 16, 17, and 18.

Handwritten title at the bottom: 'D. Orchid Meets Innesbrook'.

22 (Action) ORCHID MEETS INNESBROOK THEME: Remember (Berlin) 1½ Min.

Musical notation for item 22, including a treble clef, key signature of one flat, and tempo marking 'Mod^{to}'. Copyright notice: 'copyr 1925 by Irving Berlin'.

23 (Title) SATURDAY NIGHT Air de Ballet (Hadley) 2¼ Min.

Musical notation for item 23, including a treble clef, key signature of one flat, and tempo marking 'Alleg^{ro}'. Copyright notice: 'copyr 1920 by Carl Fischer'.

24 (Action) INNESBROOK PLACES ARM ABOUT ORCHID Repeat Theme No. 22 1¼ Min.

Musical notation for item 24, including a treble clef, key signature of one flat, and tempo marking 'Mod^{to}'.

25 (Action) INSERT-NEWSPAPER English Scenes No. 1 (Bantock) 1 Min.

Musical notation for item 25, including a treble clef, key signature of one flat, and tempo marking 'Mod^{to} non troppo'. Handwritten note 'A.B.C. #4'. Copyright notice: 'copyr 1909 by Bosworth'.

26 (Action) GUESTS DRIVE UP IN AUTO Follow the Swallow (Henderson) 2¼ Min.

Musical notation for item 26, including a treble clef, key signature of one flat, and tempo marking 'Mod^{to}'. Copyright notice: 'copyr 1924 by Remick & Co'.

27 (Action) INNESBROOK ENTERS OFFICE Passerelle (Delibes) ¾ Min.

Musical notation for item 27, including a treble clef, key signature of one flat, and tempo marking 'Alleg^{ro}'. Copyright notice: 'copyr 1912 by G. Schirmer'.

28 (Action) FLASH-BACK TO PARTY Yes Sir, That's My Baby (Donaldson) 1 Min.

Musical notation for item 28, including a treble clef, key signature of one flat, and tempo marking 'Mod^{to}'. Copyright notice: 'copyr 1925 by Irving Berlin'.

29 (Action) LANDLADY APPEARS AT DOOR NOTE: Girl kicks tray. Appassionato Dramatico (Berge) 1 Min.

Musical notation for item 29, including a treble clef, key signature of one flat, and tempo marking 'Con moto appassionato'. Handwritten note 'Dram. Sens'. Copyright notice: 'Copyr 1925 by Robbins & Engel'.

30 (Action) ORCHID PICKS UP TELEPHONE Complainte (Casadesus) 1½ Min.

Musical notation for item 30, including a treble clef, key signature of one flat, and tempo marking 'Adagio'. Handwritten note 'Appassionato'. Copyright notice: 'copyr 1922 by Choudons'.

31 (Title) DRECOTE'S Canzonetta (Carrozzini) 2½ Min.

Musical notation for item 31, including a treble clef, key signature of one flat, and tempo marking 'Alleg^{ro}'. Copyright notice: 'copyr 1925 by Peabody music co'.

32 (Action) ORCHID AND INNESBROOK LEAVE AUTO.. In Merry Mood (Axt) 1 Min.

Musical notation for item 32, including a treble clef, key signature of one flat, and tempo marking 'Alleg^{ro} scherz.'. Handwritten note 'Scherzetto Berge'. Copyright notice: 'copyr 1925 by Robbins & Engel'.

33 (Action) MRS. HERRICK SEES ORCHID Un Parole d'Amour (Savino) 2 Min.

Musical notation for item 33, including a treble clef, key signature of one flat, and tempo marking 'And^{te}'. Copyright notice: 'copyr 1919 by G. Schirmer'.

What Is Behind that Door -

34 (Title) **WHAT IS BEHIND THAT DOOR** Repeat Theme No. 22 1 Min.

Mod^{to}

35 (Title) **SORRY TO BREAK AWAY** *Summer Dream* Southern Reverie (Bendix) 1 Min.

All^{to}

copyr by M. Witmark

36 (Title) **I'LL TAKE MISS SARGOSSA HOME** Premonition (Lamechuk) ¾ Min.

Mod^{to}

copyr 1925 by Sam Fox

37 (Action) **INTERIOR OF TAXI** La Foret Perdue (Gabriel Marie) 4¼ Min.

All^{to} Mod^{to}

pp

Agitato

copyr 1919 by Edward Lorde

38 (Title) **THE PEOPLE VERSUS ORCHID SARGOSSA..** L'Angoissante Aventure (Gabriel Marie) 4¼ Min.

And^{to} Sost.

copyr by F. Salabard

39 (Action) **ORCHID AND ATTORNEY WITH GOWN.....** Pleureuse (Brunelli) 1¼ Min.

Lento

copyr by Sonno Maria Maria

40 (Action) **FLASH-BACK TO COURT ROOM** Cantilena (Goltermann) 2½ Min

And^{to}

p

Atonement

copyr 1923 by G. Schirmer

41 (Action) **JURY ROOM** Omens (Schad) 2¼ Min.

All^{to} mod^{to} con ritmo

mp

copyr 1926 by Booth Sanders

42 (Action) **JURY FILE INTO ROOM** Romance (Ketelbey) ¾ Min.

And^{to} affettuoso

p

copyr 1924 by Bosworth

43 (Title) **NOT GUILTY** Appassionato No. 47 (Berge) ¾ Min

Mod^{to}

#p

copyr 1918 by J. H. Berg

44 (Action) **STRANGER APPEARS AT DOOR** Pathetique (Noyes) 2 Min.

And^{to}

copyr 1925 by Macbeth Scott

45 (Title) **JOAN DEAR** Repeat Theme No. 22 ¾ Min.

Country of Origin, U. S. A.

THE END

Complete Orchestrations and single parts of all compositions contained herein can be purchased from CAMEO MUSIC SERVICE CORPORATION, 112-118 West 44th Street, New York City

95:2072:2