

M. J. MINTZ (PATENT)
JULY 31, 1923.

Tiffany-Stahl
presents

“MARRIAGE BY CONTRACT”

A John M. Stahl Special

with

Patsy Ruth Miller, Lawrence Gray, Ralph Emerson

Claire McDowell, Robert Edeson and others

Story by Edward Clark

Directed by James Flood

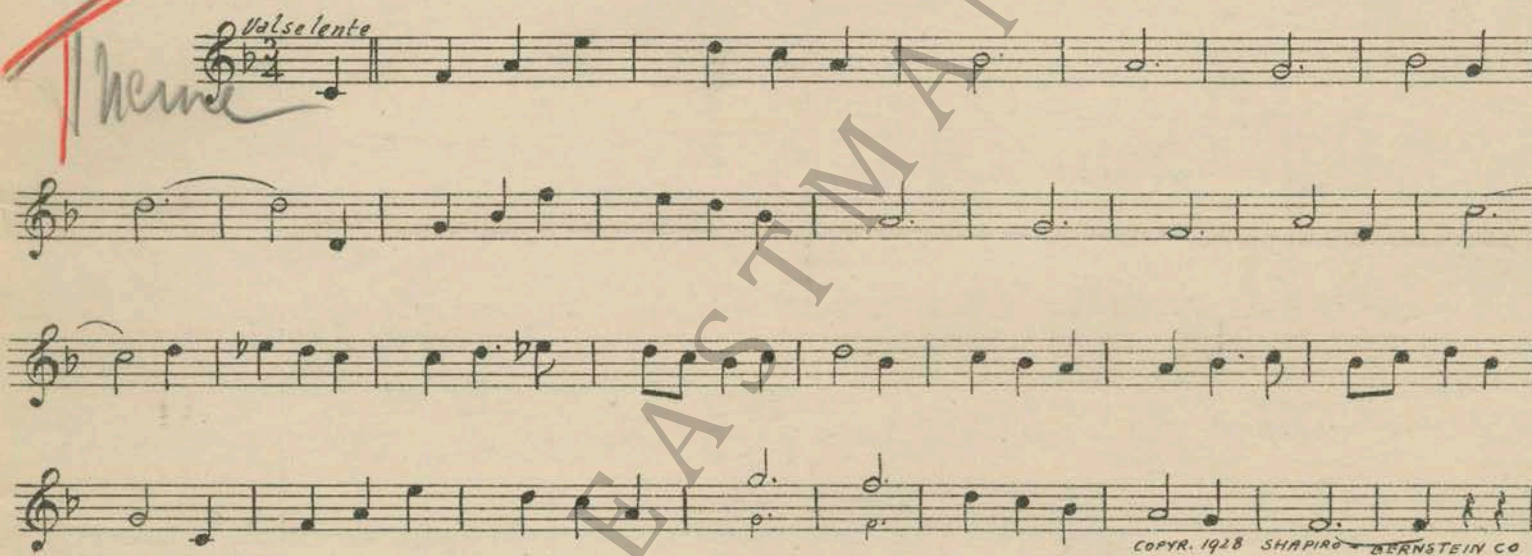
Compiled by James C. Bradford

A TIFFANY-STAHl PRODUCTION

1 AT SCREENING Take Your Tomorrow (Razaf) ¾ Min.



2 (Title) SINCE THE FIRST MAN THEME: Come Back to Me (Goldberg-Joffe) 3¼ Min.

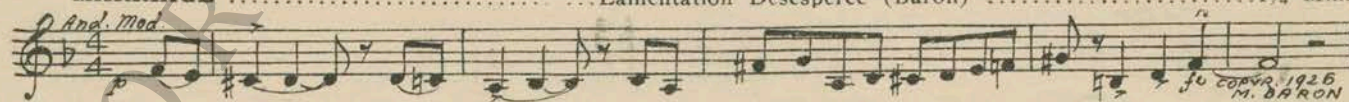


3 (Action) BOY KISSES MARGARET En Visite (McDonald) ¾ Min.



4 (Action) MARGARET ENTERS ROOM—SPEAKS TO MOTHER Repeat Theme No. 2 1 Min.

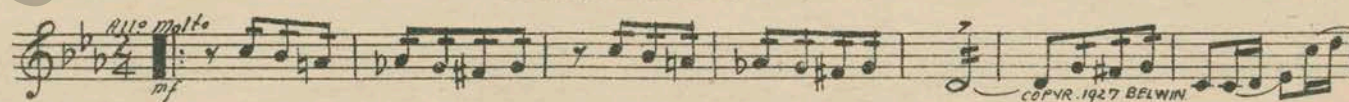
5 (Title) AND IT'S GOING TO BE A CONTRACT MARRIAGE Lamentation Desesperee (Baron) 1¼ Min.



6 (Action) INSERT—"FIRST CONTRACT MARRIAGE" Romance (Grunfeld) 1½ Min.



7 (Action) HALLWAY—REPORTERS WAITING Animated Agitato (Levy) ¼ Min.



D. insert + Contract Couple Back from "

Theme

- 8 (Action) INSERT—"CONTRACT COUPLE BACK FROM" Repeat Theme No. 2 3½ Min.
- 9 (Action) IRISH MAID ENTERS A Bit O'Blarney (Helf) ¾ Min.

COPYR. 1904 VINTAGE MARK

- 10 (Title) THAT SETTLES IT Repeat Theme No. 2 ½ Min.

Theme

- 11 (Action) CROWD AT ENTRANCE TO FIGHT ARENA... Pins and Needles (Kaufman) ½ Min.

COPYR. 1927 IRVING BERLIN

- 12 (Action) DANCE Happy Go Lucky Lane (Meyer) ½ Min.

COPYR. 1928 JEROME H. RENICK

- 13 (Action) EXTERIOR OF COTTAGE Just Another Night (Donaldson) 1¼ Min.

COPYR. 1928 DONALDSON, DOUGLAS & GUMBLE

- 14 (Action) CROWD LEAVING FIGHT ARENA Warming Up (Kaufman) 1¼ Min.

NOTE: Play in song style—"PP" con sordini, strings only.

COPYR. 1928 IRVING BERLIN

- 15 (Action) MARGARET AT HOME WAITING Three O'Clock in the Morning (Robledo) ¾ Min.

COPYR. 1921 WEST'S LTD

- 16 (Action) DON APPEARS Two in a Bar (Copping) 2½ Min.

NOTE: Play very "P" in draggy song style; catch cuckoo crowing three times.

COPYR. 1926 S. SCHIRMER

- 17 (Title) AND WE'VE BEEN MARRIED JUST THREE WEEKS Spring Cleaning (Bradford) 2½ Min.

COPYR. 1928 CARL FISCHER

- 18 (Action) MARGARET STARTS TO PACK Berceuse Comique (Kilenyi) 1¼ Min.

COPYR. 1926 CARL FISCHER

- 19 (Action) GRANNY IN BED Adventure d'Amour (Bradford) 1¾ Min.

NOTE: Play "PP"—imitate snoring.

COPYR. 1927 ROBBINS MUSIC CO

- 20 (Action) MARGARET THROWS HERSELF ON BED..... After My Laughter Came Tears (Tobias) 1½ Min.

COPYR. 1928 SHAPIRO, BERNSTEIN

NOTE: Play "PP" con sordini, strings only, espressivo.

21 (Action) INSERT—"CONTRACT MARRIAGE" Broken Hearted (Henderson) ¾ Min.

Musical notation for item 21, featuring a treble clef, a key signature of one flat, and a tempo marking of *Mod^{to}*. The melody consists of eighth and quarter notes. Copyright: 1927 De Sylva, Brown & Henderson.

22 (Action) INSERT-DIARY NOTE: Play "PP" con sordini, espressivo. In the Evening (Hanley) ¾ Min.

Musical notation for item 22, featuring a treble clef, a key signature of one flat, and a tempo marking of *Mod^{to}*. The melody consists of quarter and eighth notes. Copyright: 1928 Shapiro, Bernstein & Co.

23 (Action) COUPLE HAVING ARGUMENT Woodland Whispers (Czibulka) ½ Min.

Musical notation for item 23, featuring a treble clef, a key signature of one flat, and a tempo marking of *All^{to}*. The melody consists of eighth and quarter notes. Copyright: 1922 Carl Fischer.

24 (Action) MARGARET AND ARTHUR ENTER PRIVATE DINING ROOM Serenade (Rachmaninoff) 1¼ Min.

Musical notation for item 24, featuring a treble clef, a key signature of one flat, and a tempo marking of *Valse*. The melody consists of quarter and eighth notes. Copyright: 1918 Carl Fischer.

25 (Action) MARGARET WRITING IN DIARY Hunkatin (Levy) 2¾ Min.

Musical notation for item 25, featuring a treble clef, a key signature of one flat, and a tempo marking of *ONE-STEP*. The melody consists of quarter and eighth notes. Copyright: 1918 Belwin, Inc.

26 (Action) FLASH TO CAFE-DANCING NOTE: Play in slow tough style—"P". Dolly Dimples (Alter) 1¼ Min.

Musical notation for item 26, featuring a treble clef, a key signature of one flat, and a tempo marking of *Mod^{to}*. The melody consists of quarter and eighth notes with triplets. Copyright: 1927 Paul Whiteman Co.

27 (Action) MARGARET ENTERS ROOM Chatter (Kahn) 3 Min.

Musical notation for item 27, featuring a treble clef, a key signature of one flat, and a tempo marking of *All^o*. The melody consists of quarter and eighth notes. Copyright: 1926 Sonnemann.

28 (Action) JERRY WALKS OUT Chanson Algerian (Bradford) 1¼ Min.

Musical notation for item 28, featuring a treble clef, a key signature of one flat, and a tempo marking of *And^{te}*. The melody consists of quarter and eighth notes. Copyright: 1926 Sam Fox.

29 (Action) MOTHER OPENS DIARY Chanson Melancholique (Collinge) 1½ Min.

Musical notation for item 29, featuring a treble clef, a key signature of one flat, and a tempo marking of *And^{te}*. The melody consists of quarter and eighth notes. Copyright: 1920 Belwin, Inc.

30 (Title) MR. WINTERS IS COMING TONIGHT Repeat No. 26 "Dolly Dimples" 1 Min.

Musical notation for item 30, featuring a treble clef, a key signature of one flat, and a tempo marking of *Mod^{to}*. The melody consists of quarter and eighth notes.

31 (Title) YOU ARE EXQUISITE Adoree (Friml) 1½ Min.

Musical notation for item 31, featuring a treble clef, a key signature of one flat, and a tempo marking of *Mod^{to}*. The melody consists of quarter and eighth notes. Copyright: 1927 E. F. Kalmus.

32 (Title) AND AS THE YEARS GO ON Repeat Theme No. 2 1¼ Min.

Musical notation for item 32, featuring a treble clef, a key signature of one flat, and a tempo marking of *Valse Lento*. The melody consists of quarter and eighth notes.

Handwritten notes in red and black ink: "Theme No. 2" and "D. Philip Enters Room".

33 (Action) PHILIP ENTERS ROOM Rendez-vous d'Amour (Edwards) 2 Min.

Musical notation for 'Rendez-vous d'Amour' in G major, 2/4 time. Tempo: *All^o scherz*. Copyright: 1921 Belwin, Inc.

34 (Title) WHY CAN'T YOU TAKE YOUR AGE GRACEFULLY Garden Whispers (Herkan) 1½ Min.

Musical notation for 'Garden Whispers' in G major, 3/4 time. Tempo: *All^o Mod^o 8^{va}*. Copyright: 1924 Feature Music Co.

35 (Action) CAFE-DANCING Muddy Water (DeRose) ¾ Min.

Musical notation for 'Muddy Water' in B-flat major, 2/4 time. Tempo: *Mod^o*. Dynamics: *10^o f*. Copyright: 1926 Broadway Mus. Co.

36 (Title) WHY MARGARET, HOW YOU'VE CHANGED Broken Dreams (Spitalny) 2¼ Min.

Musical notation for 'Broken Dreams' in B-flat major, 2/4 time. Tempo: *Espressivo*. Copyright: 1927 Sam Fox.

37 (Action) DANCING STARTS Is She My Girl Friend? (Ager) 1½ Min.

Musical notation for 'Is She My Girl Friend?' in B-flat major, 2/4 time. Tempo: *Mod^o*. Copyright: 1927 Ager, Yellen & Bornstein.

38 (Action) MARGARET WRITING IN DIARY Repeat No. 36 "Broken Dreams" 2½ Min.

Musical notation for 'Broken Dreams' in B-flat major, 2/4 time. Tempo: *Espressivo*.

39 (Action) INSERT—"MRS. PHILIP DRURY" Pleureuse (Brunelli) 3½ Min.

Musical notation for 'Pleureuse' in C major, 2/4 time. Tempo: *Lento*. Copyright: 1928 Sonnemann Mus. Co.

40 (Title) WE'RE NOT BROKE Implorations (Pasternack) 3½ Min.

Musical notation for 'Implorations' in B-flat major, 2/4 time. Tempo: *Mod. ma sost.*. Copyright: 1928 Irving Berlin.

41 (Title) NO PHILIP, GOD HELP ME Affolement (Andrieu) 1¾ Min.

Musical notation for 'Affolement' in G major, 2/4 time. Tempo: *All^o*. Copyright: 1928 Manus Mus. Co.

42 (Action) MARGARET IN BED Joyful Appassionato (Jacquet) 1¼ Min.

Musical notation for 'Joyful Appassionato' in B-flat major, 2/4 time. Tempo: *All^o appassion.*. Copyright: 1928 Irving Berlin.

43 (Title) IT'S DON Repeat Theme No. 2 1 Min.

Musical notation for 'IT'S DON' in B-flat major, 2/4 time. Tempo: *Valze Lento*.

THE END

Printed in U. S. A.

Complete orchestrations and single piano parts of each separate number contained hereon, can be purchased from CAMEO MUSIC SERVICE CORPORATION, 315-317 WEST 47TH STREET, NEW YORK CITY.

95:207631