

384



CARL LAEMMLE
presents
"THE MARRIAGE CLAUSE"

Featuring
Francis X. Bushman and Billie Dove
Music compiled by Dr. Edward Kilenyi
UNIVERSAL-JEWEL

- 1 AT SCREENING Le Seigneur de Kermor (Gabriel Marie) ¾ Min.

Andte maest.

 Copyr. 1918 Rouart Lerolle

- 2 (Title) MAX RAVENAL Playful Allegro (Savino) 2¼ Min.

Allo grazioso

 Copyr. 1925 Robbins Engel

- 3 (Action) BARRY OPENS DOOR—SEES GIRL SITTING.. Romance (D'Ambrosio) 1½ Min.

Andte

 Copyr. 1925 G. Schirmer

- 4 (Title) THERE WAS A VALET Bientot Libre (Gabriel Marie) 2 Min.

con fuoco

 Copyr. 1925 S. Chapellier

- 5 (Title) TO DIRECT THIS PLANT Characteristic Allegro (Moszkowski) 2 Min.

Allo

 Copyr. 1925 Robbins Engel

- 6 (Title) THE DRESS REHEARSAL Alabama (Spaulding) 3¼ Min.

Andte con moto

 Copyr. 1915 G. Schirmer

- 7 (Action) CURTAIN GOES DOWN Pleading Love Theme (Bradford) 1 Min.
NOTE: Play slowly, "P" and melodramatically to action.

Andte

 Copyr. 1924 Belwin Inc

- 8 (Action) AUTO SCENE Dreamy Moments (Marquardt) 1 Min.

Allo

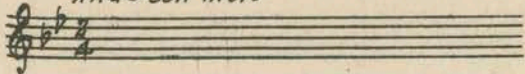

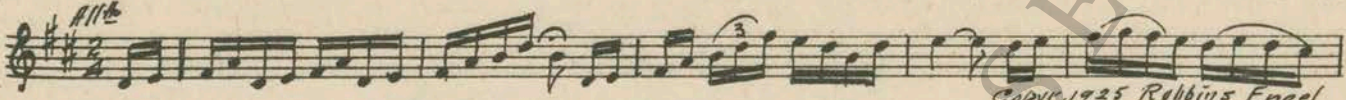
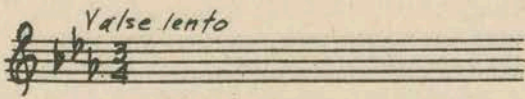
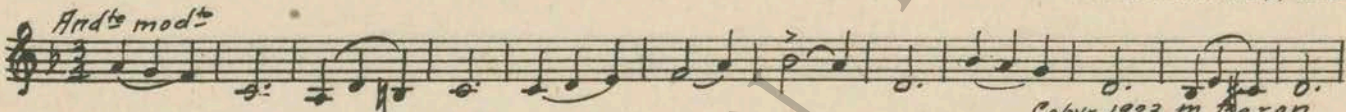
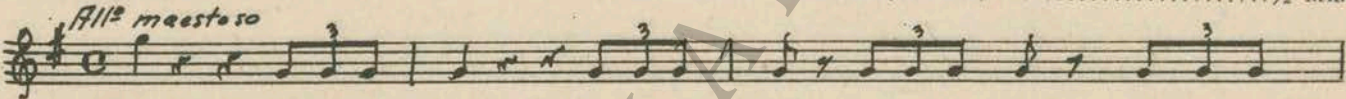
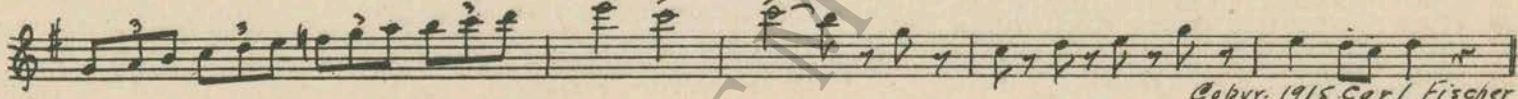

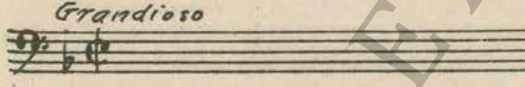
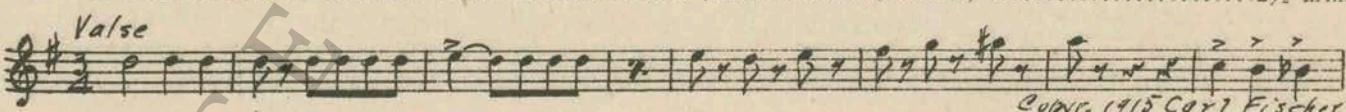
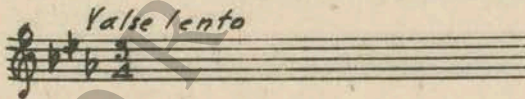

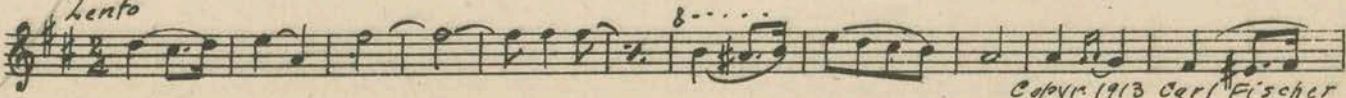
 Copyr. 1925 Music Buyers

- 9 (Title) YOU ARE SO SWEET THEME: Had I But Known (Axt) 2¾ Min.

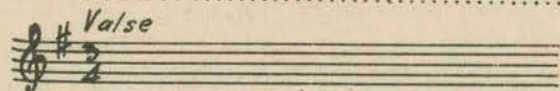
Valse lento

 Copyr. 1926 Robbins Engel

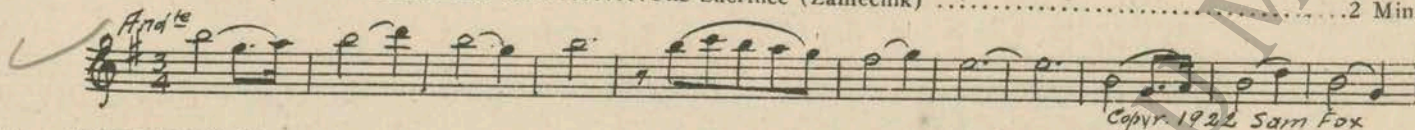
Copyr. 1926 Robbins Engel

- 10 (Title) **A GREAT LOVE AND A GREAT** Repeat No. 6 "Alabama" ¾ Min.
And^{te} con moto

- 11 (Action) **APPLAUSE—CURTAIN CLOSES** La Monna (Franceschi) 1 Min.
Grandioso

 Copyr. E. Sa Labert
- 12 (Title) **THESE FRIENDS OF MINE** Moon Madness (Lodge) 1½ Min.
 NOTE: Play last 15 bars only.
All^o

 Copyr. 1925 Robbins Engel
- 13 (Action) **INTERIOR OF DRESSING ROOM** Repeat Theme No. 9 ¼ Min.
Valse lento

- 14 (Action) **GIRL READS CONTRACT—INSERT SEEN**.... Souvenir d'Antan (Baron) 2¾ Min.
And^{te} mod^{to}

 Copyr. 1923 M. Baron
- 15 (Title) **THREE YEARS FOLLOWED** Romeo and Juliet Selection (Gounod) ½ Min.
All^o maestoso


 Copyr. 1915 Carl Fischer
- 16 (Action) **STAGE SEEN—JULIET ON BIER** Romeo and Juliet Selection (Gounod) 2½ Min.
Mod^{to}

 Copyr. 1915 Carl Fischer
- 17 (Action) **APPLAUSE—CURTAIN GOES DOWN** Repeat No. 11 "La Monna" 1½ Min.
Grandioso

- 18 (Title) **HE WHO ONCE SHARED** Romeo and Juliet Selection (Gounod) 2½ Min.
 NOTE: Play "PP" when Barry is seen.
Valse

 Copyr. 1915 Carl Fischer
- 19 (Title) **DO YOU KNOW WHAT THIS NIGHT** Repeat Theme No. 9 1½ Min.
 NOTE: Start Tempo di Valse, and play till Allegro Maestoso, then repeat if necessary.
Valse lento

- 20 (Title) **HAD BARRY FORGOTTEN** Love Tragedy (Savino) (Play "PP") 2 Min.
And^{te}

 Copyr. 1924 Robbins Engel
- 21 (Title) **DID YOU NOTICE** Why? (Schumann) ¼ Min.
Lento

 Copyr. 1913 Carl Fischer

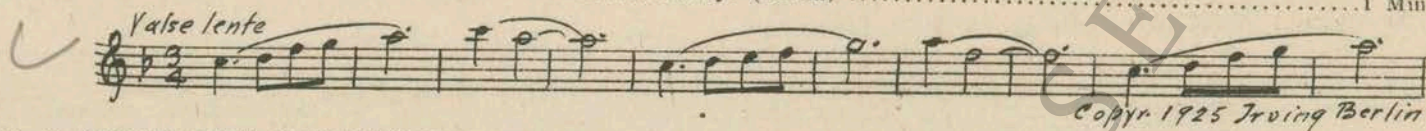
22 (Action) SYLVIA AND BARRY ARRIVE—ENTER HOUSE Repeat No. 18 "Romeo and Juliet" 1¼ Min.



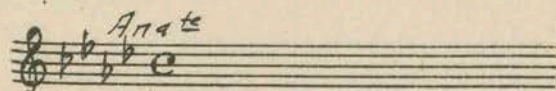
23 (Title) HE HAD SUBMERGED HIMSELF The Sacrifice (Zamecnik) 2 Min.



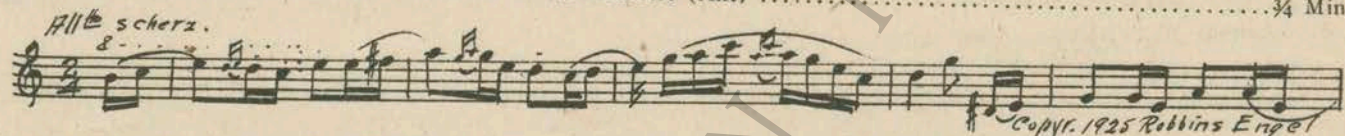
24 (Title) YOU KNOW IT Always (Berlin) 1 Min.



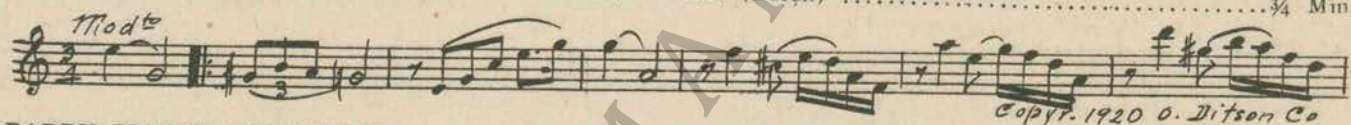
25 (Action) SYLVIA SEES BARRY WITH ANOTHER GIRL Repeat No. 20 "Love Tragedy" 2½ Min.



26 (Action) SYLVIA IS SURROUNDED BY GUESTS Fleurette (Axt) ¾ Min.



27 (Action) MISS LeBLANC READS CONTRACT Appassionato (Borch) ¾ Min.

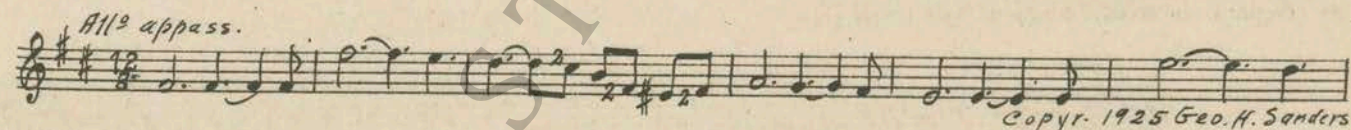


28 (Title) BARRY, PLEASE COME IN FOR Repeat No. 20 "Love Tragedy" 2 Min.

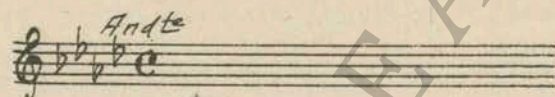
29 (Title) NOT MY HOUSE, OUR HOUSE Repeat Theme No. 9 2¼ Min.

30 (Action) BARRY LEAVES ROOM Repeat No. 20 "Love Tragedy" 1½ Min.

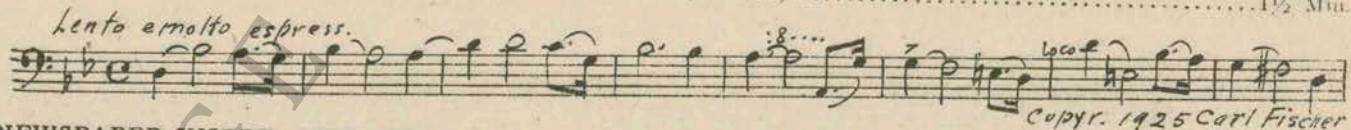
31 (Title) WELL MAX, I GUESS Defiant Love (Schad) 3 Min.



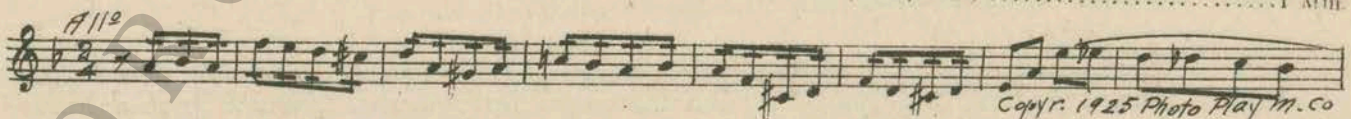
32 (Action) BARRY IN AUTO WRITES NOTE Repeat No. 20 "Love Tragedy" 1¼ Min.



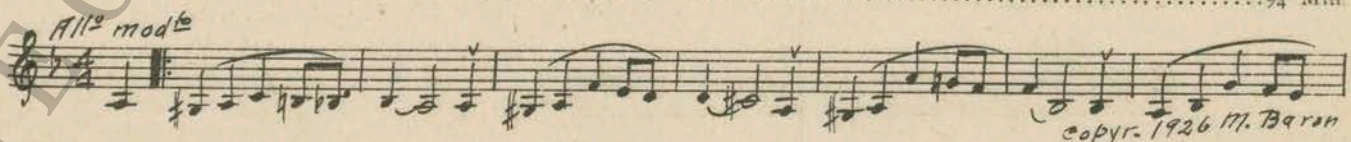
33 (Action) ADVERTISEMENT: MILDRED LeBLANC Souvenir (Herbert) 1½ Min.



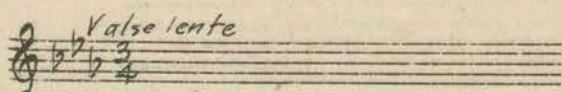
34 (Action) NEWSPAPER INSERT—NEW YORK THEATRE GOSSIP Incid. Symphony No. 32 (Kempinski) 1 Min.



35 (Action) SCENE ON STAGE Plainte Passionnee (Baron) ¾ Min.



36 (Action) SYLVIA LOOKS AT PHOTO Repeat Theme No. 9 1¼ Min.



37 (Title) THE OPENING NIGHT Les Lauriers Rouges (Gabriel Marie) 4¾ Min.

All^o agitato

Copyr. 1919 Rouart Lerolle

38 (Title) YOU WILL HAVE TO Rapture (Zamecnik) ¾ Min.

con Anima

Copyr. 1925 Sam Fox P. Co

39 (Action) CURTAIN GOES UP—SCENE ON STAGE Pomp and Pageantry (Schertzing) 2 Min.

Slowly

Copyr. 1924 Photo Play M Co

40 (Action) CURTAIN GOES DOWN Repeat No. 11 "La Monna" ¼ Min.

Grandioso

41 (Action) EXTERIOR—TWO MEN IN FULL DRESS
COME OUT Piangere (Gabriel Marie) 1 Min.

Lento

Copyr. 1924 Chapelier

42 (Title) HE MAY THINK HE IS NOT Tragic Moments (Bece) ½ Min.

And^{te} mosso

Copyr. 1925 Schlesinger

43 (Action) CHURCH SCENE ON STAGE Organ Solo Improvise 1 Min.

44 (Action) SYLVIA FAINTS ON STAGE Epoque Chevaleresque (Gabriel Marie) 1 Min.

Lento

Copyr. Manus M. Co

45 (Title) TO A SENSITIVE SOUL Repeat No. 20 "Love Tragedy" ¾ Min.

And^{te}

46 (Title) WHAT DAY IS THIS Dramatic Lamento (Berge) 1¼ Min.

Lento mod^{to}

Copyr. 1922 Jungnickel

47 (Action) INTERIOR OF SICKROOM Lamento (Baron) 4¾ Min.

And^{te} lamentoso

Copyr. 1921 Belwin Inc

48 (Title) IT'S ALL RIGHT Repeat Theme No. 9 ¼ Min.

Walse lento

Printed in U. S. A.

THE END

Complete orchestrations and single piano parts of each separate number contained hereon, can be purchased from CAMEO MUSIC SERVICE CORPORATION, 315-317 West 47th Street, New York City.

95:2078:2