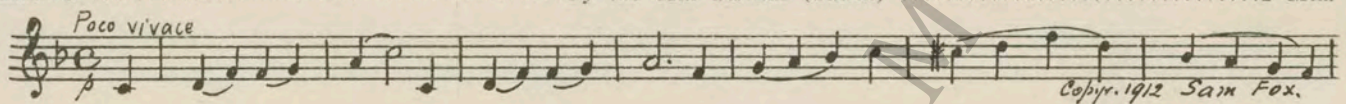


398



FIRST NATIONAL PICTURES, INC.
presents
"MIDNIGHT LOVERS"
with
LEWIS STONE and ANNA Q. NILSSON
Music compiled by James C. Bradford
A FIRST NATIONAL PICTURE

1 AT SCREENINGBy the Mill Stream (Smith)2 Min.



2 (Action) ORGAN KEYBOARDBridal Chorus from "Lohengrin" (Wagner)1 Min.



3 (Action) THEY STAND IN FRONT OF CLERGYMAN...O Promise Me (DeKoven)1/2 Min.



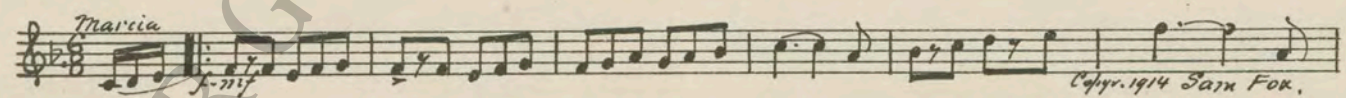
4 (Action) TURN AND EXITWedding March (Mendelssohn)3/4 Min.



5 (Action) DIANA AND BILL IN AUTOPiccolinette (Tarelli)1/2 Min.



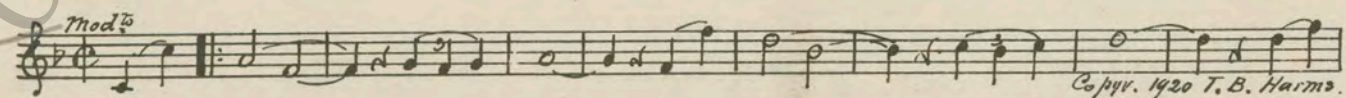
6 (Action) FLYING FIELDBoots and Saddles (Lusk) (Military)1/4 Min.



7 (Action) PLANE TAKES OFFOrgies of the Spirits (Ilynsky) (Aeroplane)1/2 Min.



8 (Title) AND THEY FLEW BACKThe Love Nest (Hirsch)4 Min.



NOTE: Propeller effects ad lib.

9 (Action) CORPORAL SQUASH ENTERS Marche Miniature (Jacobi) (Grotesque) 1 3/4 Min.

Musical notation for item 9, including the tempo marking *Marcia* and the copyright notice *Copyright 1916 G. Schirmer.*

10 (Title) BILL SPED BACK TO FRONT It's a Long Way to Tipperary 1 Min.

Musical notation for item 10, including the tempo marking *Marcia*.

11 (Action) SQUASH LEAVES DIANA NOTE: Propeller effects ad lib. Magic Love (Bradford) 1 1/2 Min.

Musical notation for item 11, including the tempo marking *Valse lente* and the copyright notice *Copyright 1925 Sam Fox.*

12 (Title) WEEK IN AND WEEK OUT Keep the Home Fires Burning (Novello) (Patriotic) 1 Min.

Musical notation for item 12, including the tempo marking *Marcia* and the copyright notice *Copyright 1915 Chappell & Co.*

13 (Title) WHEN BILL TOLD THE SQUADRON Rock-a-bye Baby (Luz) (Burlesque) 1/2 Min.

Musical notation for item 13, including the tempo marking *Marcia* and the copyright notice *Copyright 1922 Photo Play.*

14 (Title) ONE DRINK LED TO ANOTHER Madelon (Robert) (French Comic) 2 Min.

Musical notation for item 14, including the tempo marking *Lively* and the copyright notice *Copyright 1918 J. H. Remick.*

15 (Title) WHEN DIANA'S AUNT Hinky Dinky Parlay Voo? (McHugh) (French Comic) 3/4 Min.

Musical notation for item 15, including the tempo marking *Marcia* and the copyright notice *Copyright 1924 J. Mills.*

16 (Action) GIRL APPEARS—EXCITEMENT Mon Homme (Yvain) (French Burlesque) 1 Min.

Musical notation for item 16, including the tempo marking *Andte Pathetique* and the copyright notice *Copyright 1920 Leo Feist.*

17 (Action) DIANA IN BED Animal Cartoonix No. 2 (Aborn) 1 1/2 Min.

Musical notation for item 17, including the tempo marking *Andte* and the copyright notice *Copyright 1925 Belwin.*

18 (Title) DIANA'S PRIDE WAS HURT Prelude (Jarnefelt) 1 Min.

Musical notation for item 18, including the tempo marking *Allo pizz* and the copyright notice *Copyright 1913 G. Schirmer.*

19 (Title) OUT OF A NOVEMBER NIGHT The Big Parade (Axt) 1 Min.

Musical notation for item 19, including the tempo marking *Mausioso* and the copyright notice *Copyright 1926 Robbins & Briggles.*

20 (Action) INSERT—LETTER Reverie (Conterno) 1 Min.

Musical notation for item 20, including the tempo marking *modto* and the copyright notice *Copyright 1926 Lipscomb.*

NOTE: Play rather plaintive, strings only.

21 (Title) LONDON AT LAST Second Misterioso a la Valse (Savino) 1¼ Min.

Musical notation for 'LONDON AT LAST' in G major, 4/4 time. Tempo: *All^{to} Mod^{to}*. Copyright 1925 Robbins & Engel.

22 (Action) DECORATOR ENTERS Repeat No. 18 "Prelude" 2 Min.

Musical notation for 'DECORATOR ENTERS' in G major, 2/4 time. Tempo: *All^o*.

23 (Title) NOT GOING. OWEN Scherzo Primo (Conterno) 1¾ Min.

Musical notation for 'NOT GOING. OWEN' in G major, 4/4 time. Tempo: *Mod^{to} assai*. Dynamics: *mf*. Copyright 1926 Lipskin.

24 (Title) YOU MEAN YOU DON'T WANT ME HERE.... Meditation (Baron) 1½ Min.

Musical notation for 'YOU MEAN YOU DON'T WANT ME HERE' in G major, 3/4 time. Tempo: *And^{te}*. Copyright 1924 Belwin.

25 (Title) POOR BILL Cat and Mice (Leonard) 5 Min.

Musical notation for 'POOR BILL' in G major, 4/4 time. Tempo: *All^{to} non troppo*. Copyright 1926 G. Schirmer.

26 (Action) LAWYER LEAVES The Flight of the Bumble Bee (Rimsky-Korsakow) 1 Min.

Musical notation for 'LAWYER LEAVES' in G major, 2/4 time. Tempo: *Vivace*. Copyright 1926 Carl Fischer.

27 (Title) AT HIS CLUB Blue Law Blues (Lake) (Drinking Burlesque) 2 Min.

Musical notation for 'AT HIS CLUB' in G major, 4/4 time. Tempo: *Burlesque*. Dynamics: *mf*. Copyright 1921 C. Fischer.

28 (Action) BILL READS NOTE—HAPPY Show Me the Way to Go Home (King) ½ Min.

Musical notation for 'BILL READS NOTE—HAPPY' in G major, 4/4 time. Tempo: *Mod^{to}*. Copyright 1925 Harms Inc.

29 (Action) HAND FUMBLING WITH KEYS AT KEYHOLE Humpty Dumpty's Funeral March (Brandeis) 4¾ Min.

Musical notation for 'HAND FUMBLING WITH KEYS AT KEYHOLE' in G major, 3/4 time. Tempo: *Scherz.*. Copyright 1923 G. Schirmer.

30 (Action) DIANA AND MONTE ENTER Eternal Poem (Weiller) 1¾ Min.

Musical notation for 'DIANA AND MONTE ENTER' in G major, 3/4 time. Tempo: *Valse lento*. Copyright 1926 Emil Fischer.

31 (Action) DIANA SEES BED CLOTHES MOVE Moto Perpetuo (Byng) ¾ Min.

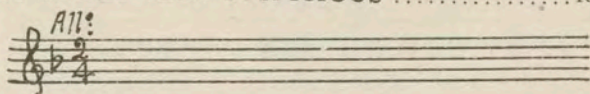
Musical notation for 'DIANA SEES BED CLOTHES MOVE' in G major, 4/4 time. Tempo: *All^o*. Copyright 1926 Hawkes.

32 (Action) BILL APPEARS IN GROTESQUE ATTIRE Comedy Capers (Steele) 2½ Min.

Musical notation for 'BILL APPEARS IN GROTESQUE ATTIRE' in G major, 4/4 time. Tempo: *Mod^{to}*. Copyright 1925 E. Ascher.

NOTE: Play "P" a la grotesque, slowly.

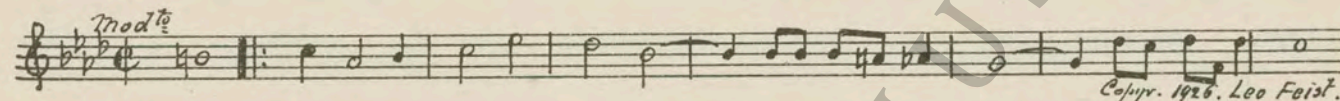
33 (Title) IT LOOKS VERY SUSPICIOUS Repeat No. 18 "Prelude" 1 Min.



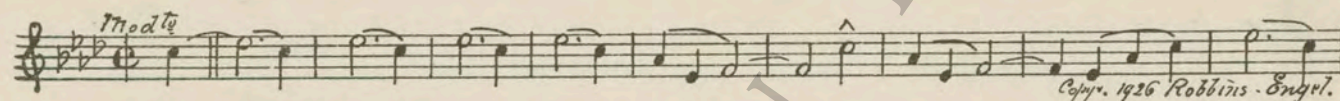
34 (Action) BILL IN BED Berceuse Comique (Kilenyi) (Drinking Burlesque) 1 Min.



35 (Action) DIANA AT COUCH FIXING PILLOWS I'm Walking Around in Circles (Phillips) 1 1/4 Min.



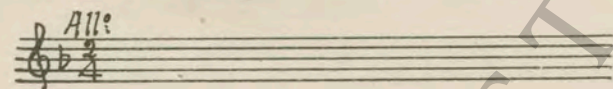
36 (Action) DIANA WALKS QUIETLY TO DOOR OF BILL'S ROOM Only You and Lonely Me (Greer) 1 Min.



37 (Action) FACE OF CLOCK Elopement (Carrozzini) 1 1/4 Min.



38 (Action) OWEN ENTERS Repeat No. 18 "Prelude" 1 1/4 Min.



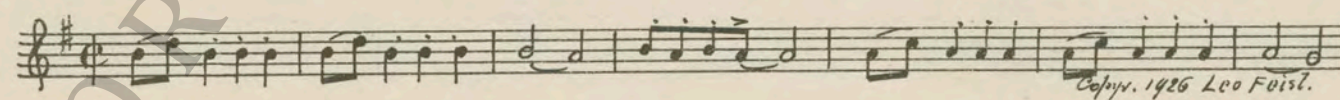
39 (Action) LAWYER ENTERS Lords and Ladies (Salzer) 2 1/2 Min.



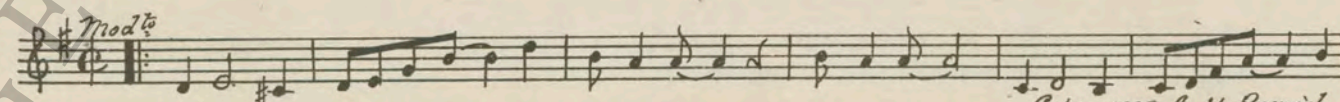
40 (Action) LAWYER LEAVES Flocons de Neige (Bradford-Boutelje) 1 1/2 Min.



41 (Title) WHERE ARE YOU GOING After I Say I'm Sorry (Donaldson) 1 1/4 Min.



42 (Action) BILL REMOVES HAT Here I Am (Henderson) 1 Min.



Printed in U. S. A.

THE END

Orchestrations or single piano parts of each separate musical selection suggested hereon, can be purchased from CAMEO MUSIC SERVICE CORPORATION, 315-317 WEST 47TH STREET, NEW YORK CITY.

95-2093:1