

Pathe  
 presents

“MIDNIGHT MADNESS”

with

JACQUELINE LOGAN and CLIVE BROOK

A Hector Turnbull Production

Adaptation and continuity by Robert N. Lee  
 from “The Lion Trap” by Daniel Nathan Rubin

Directed by F. Harmon Weight

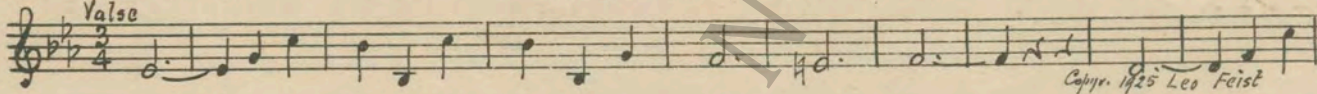
De Mille Studio Production

Compiled by Rudolph Berliner

Pathe Exchange, Inc.  
 Distributors

1 AT SCREENING ..... Midnight Waltz (Donaldson) ..... 1 Min.

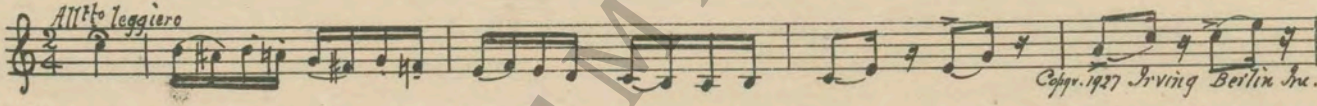
*Roguel*



Copyright 1925 Leo Feist

2 (Action) INSERT—COFFEE POT ..... Cute and Cunnin' (Kempinski) ..... 1½ Min.

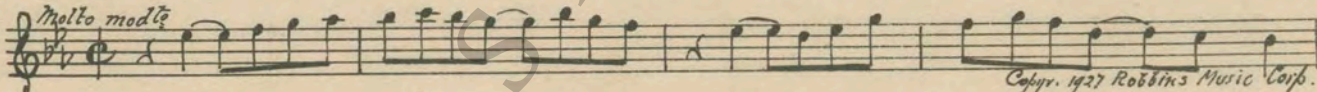
*Birds + Butterflies*



Copyright 1927 Irving Berlin Inc.

3 (Action) MAN ASLEEP ..... Lazy Bones (Edwards) ..... 1 Min.

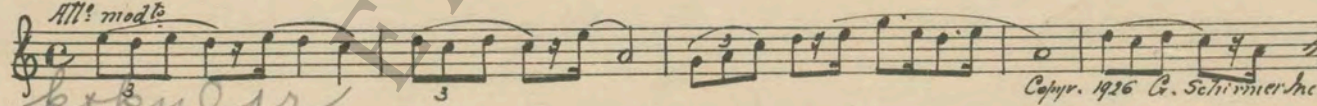
*Comedy Capers*



Copyright 1927 Robbins Music Corp.

4 (Action) BOY SWEEPING ..... Stray Sunbeams (Huerter) ..... 1½ Min.

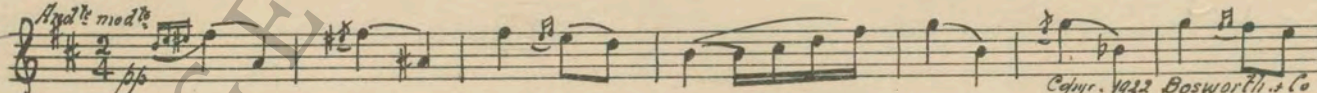
*By Window + popular*



Copyright 1926 G. Schirmer Inc.

5 (Action) MAN LOOKING OUT WINDOW ..... Waiting (Ancliffe) ..... 1¾ Min.

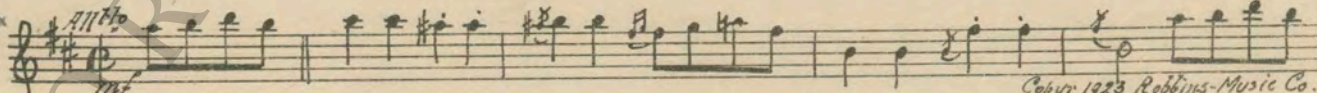
*Theme*



Copyright 1922 Bosworth & Co.

6 (Action) THREE MEN IN OFFICE ..... Dew Drops (Rapee-Axt) ..... 1½ Min.

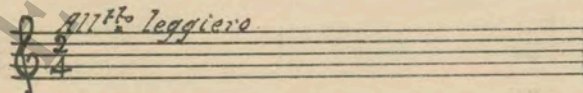
*Theme*



Copyright 1923 Robbins-Music Co.

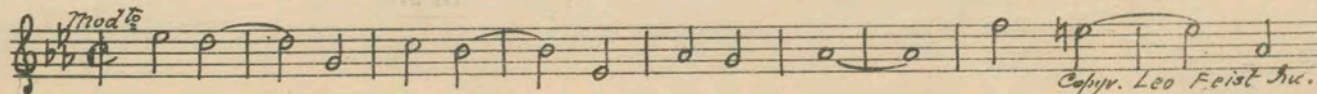
7 (Action) NORMA APPEARS ..... Repeat No. 2 “Cute and Cunnin’” ..... 1 Min.

*Theme*



8 (Title) BUT I'M CRAZY ABOUT ..... You Know I Love You (Burke) ..... 1½ Min.

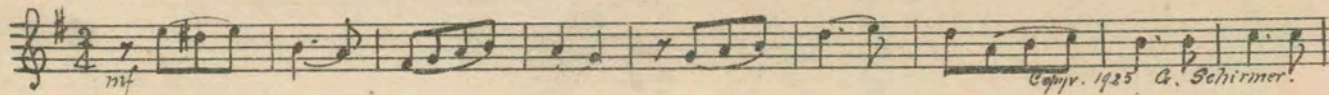
*I can't give you anything but love*



Copyright Leo Feist Inc.

9 (Title) IS THAT ALL YOU MEAN ..... Disillusioned (Srawley) ..... 1½ Min.

*Draw*



10 (Title) HOME SWEET HOME ..... Home Sweet Home (Bishop) ..... 2 Min.

*short*



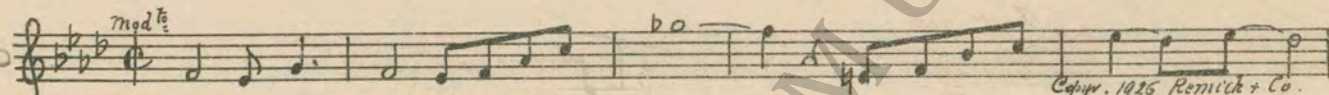
NOTE: Play 4 measures only, then segue.  
SEGUE ..... Quandy (Schad)

*Elegiac  
Childers - misterious event*



11 (Title) DINNER, THEATRE AND ..... I'm In Love With You That's Why (Henderson) ..... ¾ Min.

*Blue shadows*



12 (Action) PEOPLE STOP DANCING ..... Magic Love (Bradford) ..... 2½ Min.

*theme*



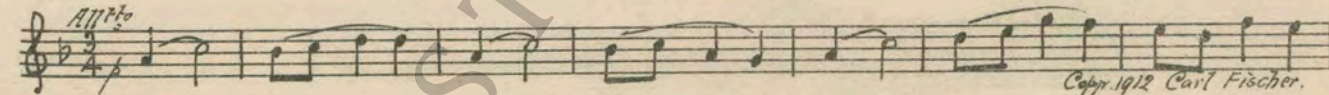
13 (Action) CHILDERS' OFFICE-NORMA ARRIVES ..... A Spring Day (Haines) ..... 1 Min.

*Dance  
Guares*



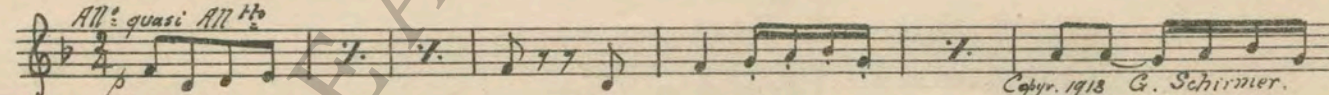
14 (Action) BREAM APPEARS ..... Serenade (Chaminade) ..... 2 Min.

*Draw*



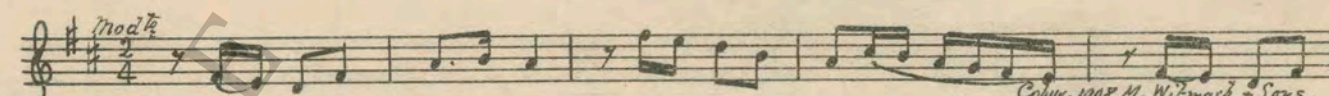
15 (Action) BREAM OPENS DOOR ..... Prelude (Jarnefelt) ..... 2¼ Min.

*Serenade*



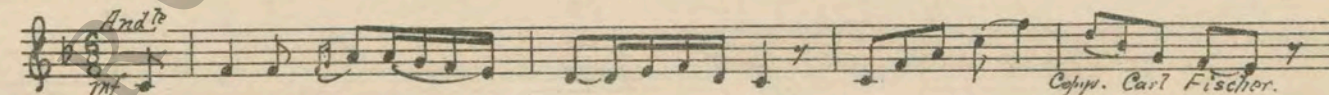
16 (Action) INSERT-STEAMSHIP TICKET ..... Love's Voyage (Barrett) ..... 2¼ Min.

*Slyphs*



17 (Action) INSERT-BOAT WHISTLE ..... The Anchor's Weigh'd (DeWitt) ..... ½ Min.

*R. J. Lurry*



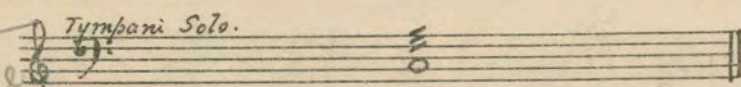
18 (Action) CABIN BOY WITH BASKET APPEARS ..... 2nd Arabesque (Debussy) ..... 1¾ Min.

*same*



19 (Action) SHIP AT SEA ..... Orchestra Tacet-Timpany Solo ..... ¼ Min.

*Chords  
on flutes*



20 (Action) OX WAGON ON ROAD ..... Mountain Trails (Schoenfeld) ..... 1 Min.

*On the road*

Musical notation for 'OX WAGON ON ROAD' in 2/4 time, key of D major. The melody is simple and rhythmic, consisting of eighth and quarter notes. Copyright: 1925 Photo Play Music Co.

21 (Action) CHILDERS AT DESK ..... A Mysterious Event (Zamecnik) ..... 1/2 Min.

*Breath of Spring*

Musical notation for 'CHILDERS AT DESK' in 2/4 time, key of D major. The melody is light and airy, with some rests. Marking: *All<sup>o</sup> mist.* Copyright: 1925 Sam Fox Pub. Co.

22 (Action) EXTERIOR SCENE ..... In the Heart of the Hills (Lee) ..... 1 1/4 Min.

*Light*

Musical notation for 'EXTERIOR SCENE' in 3/8 time, key of D major. The melody is light and rhythmic. Copyright: 1926 Sam Fox Pub. Co.

23 (Action) THEY ENTER HOUSE ..... Desolation (Conterno) ..... 1 1/2 Min.

*Slow*

Musical notation for 'THEY ENTER HOUSE' in 2/4 time, key of D major. The melody is slow and somber. Marking: *And<sup>te</sup> doloroso*. Copyright: 1926 Lipskin & Son.

24 (Action) BREAM KNEELS BESIDE NORMA IN CHAIR ..... Loves Melody (Hurst) ..... 3/4 Min.

*Theme*

Musical notation for 'BREAM KNEELS BESIDE NORMA IN CHAIR' in 2/4 time, key of D major. The melody is simple and rhythmic. Marking: *And<sup>te</sup>*. Copyright: 1912 Boston Mus. Co.

25 (Action) NORMA STRIKES BREAM ..... Appassionato No. 3 (Axt) ..... 2 Min.

*Appas.*

Musical notation for 'NORMA STRIKES BREAM' in 2/4 time, key of D major. The melody is more complex and dramatic. Marking: *Mod<sup>to</sup>*. Copyright: 1926 Robbins Music Co.

26 (Action) LION APPEARS ..... Karma (Herbert) ..... 1 1/4 Min.

*Slow*

Musical notation for 'LION APPEARS' in 2/4 time, key of D major. The melody is slow and dramatic. Marking: *And<sup>te</sup> maestoso*. Copyright: 1926 Carl Fischer.

27 (Action) EXTERIOR SCENE ..... Quandry (Schad) ..... 1 Min.

*Reserie*

Musical notation for 'EXTERIOR SCENE' in 2/4 time, key of D major. The melody is light and rhythmic. Marking: *Pensively*. Copyright: 1926 G. Schirmer.

28 (Action) RAT APPEARS ..... Thrills (Sanders) ..... 3/4 Min.

*Chippmunk*

Musical notation for 'RAT APPEARS' in 2/4 time, key of D major. The melody is light and rhythmic. Marking: *Lively*. Copyright: 1925 G. Schirmer.

29 (Action) MINE SHAFT ..... At Dawn (Delje) ..... 1 1/4 Min.

*same*

Musical notation for 'MINE SHAFT' in 2/4 time, key of D major. The melody is simple and rhythmic. Marking: *Mod<sup>to</sup>*. Copyright: 1924 Feature Music P. Co.

30 (Action) INSERT HAND AND SPARK PLUG ..... Accusation (Zamecnik) ..... 3/4 Min.

11

Musical notation for 'INSERT HAND AND SPARK PLUG' in 2/4 time, key of D major. The melody is simple and rhythmic. Marking: *And<sup>te</sup> mod<sup>to</sup>*. Copyright: 1925 Sam Fox.

31 (Title) NOW RUN IN THE ..... Melodie (Rachmaninoff) ..... 3 Min.

*Appas.*

Musical notation for 'NOW RUN IN THE' in 2/4 time, key of D major. The melody is simple and rhythmic. Marking: *Mod<sup>to</sup>*. Copyright: 1918 Carl Fischer.

32 (Action) INSERT—PHONOGRAPH PLAYING .....Who Do You Love? (Klages) .....1¼ Min.

*Some  
Sweet  
Home*

Musical notation for "Who Do You Love?" (Klages). Tempo: *Mod<sup>to</sup>*. Copyright 1926 Robbins Music Cor.

NOTE: Stop short when Norma takes record off, then segue.  
SEGUE .....Trembling Agitato (Kilenyi)

*Desperation*

Musical notation for "Trembling Agitato" (Kilenyi). Tempo: *Al<sup>ro</sup>*. Copyright 1925 Belwin Inc.

33 (Action) MOTOR CAR APPEARS .....Dram. Tension No. 52 (Noyes) .....1¼ Min.

*Villain*

Musical notation for "Dram. Tension No. 52" (Noyes). Tempo: *Molto mod<sup>to</sup>*. Copyright 1925 Hawkes & Son.

34 (Action) NORMA MEETS CHILDERS .....Enigma (Borch) .....4 Min.

*In the  
Smuggler's  
Cave*

Musical notation for "Enigma" (Borch). Tempo: *Mod<sup>to</sup>*. Copyright 1922 Hawkes & Son.

35 (Title) I'M SORRY TO UPSET .....The Accuser (Kay) .....1¼ Min.

*agitato*

Musical notation for "The Accuser" (Kay). Tempo: *Maestoso*. Copyright 1925 Forster Mus. Co.

36 (Title) I'LL TAKE YOU .....Agitato No. 4 (Axt) .....2½ Min.

"

Musical notation for "Agitato No. 4" (Axt). Tempo: *Al<sup>ro</sup>*. Copyright 1925 Robbins Music Cor.

37 (Action) BREAM OPENS EYES .....Adagio Pathetique (Godard) .....1¼ Min.

*Andante*

Musical notation for "Adagio Pathetique" (Godard). Tempo: *Adagio*. Copyright 1910 G. Schirmer.

38 (Action) CHILDERS AND OVERSEER BESIDE CAR ...The Conspirators (Sodero) .....1 Min.

*Forgetful*

Musical notation for "The Conspirators" (Sodero). Tempo: *Agitato*. Copyright 1927 Carl Fischer.

39 (Action) LION APPEARS .....Turbulence (Borch) .....2¼ Min.

*Combat*

Musical notation for "Turbulence" (Borch). Tempo: *Agitato*. Copyright 1918 Belwin Inc.

40 (Action) NORMA SHOOTS LION .....Dawn of Hope (Casella) .....1 Min.

*Andante*

Musical notation for "Dawn of Hope" (Casella). Tempo: *And<sup>te</sup>*. Copyright 1913 Carl Fischer.

41 (Title) I DON'T KNOW .....Because I Love You (Berlin)

*Theme*

Musical notation for "Because I Love You" (Berlin). Tempo: *Valse mod<sup>to</sup>*. Copyright 1926 Irving Berlin.

THE END

Printed in U. S. A.

Complete orchestrations and single piano parts of each separate number contained hereon, can be purchased from CAMEO MUSIC SERVICE CORPORATION, 315-317 WEST 47TH STREET, NEW YORK CITY.

95:209431