

324

Thematic Music Cue Sheet

M. J. MINTZ (PATENT) JULY 31, 1923



ADOLPH ZUKOR and JESSE L. LASKY present

"MOANA"

ROBERT FLAHERTY'S True Epic of Life and Love in the South Seas

Music compiled by James C. Bradford

Footage 6133 feet

A Paramount Picture

1 -AT SCREENING Samoan Boat Song from "Samoan Suite" (Bradford).....1 3/4 Min.

Musical score for 'Samoan Boat Song' with notation, dynamics like 'Andte grave', and copyright 'Copyright 1926 Belwin Inc.'

2 (Action) FADE-IN SILVER TREE La Source Ballet (Delibes) (3rd Suite)..... 1/2 Min.

Musical score for 'La Source Ballet' with notation, dynamics like 'molto modto f', and copyright 'Copyright 1920 Ross Jungnickel.'

3 (Action) BOY PE'A APPEARS IN VEGETATION..... Scherzo from "Midsummer Night's Dream" (Mendelssohn)..1 1/4 Min.

Musical score for 'Scherzo from Midsummer Night's Dream' with notation and copyright 'Copyright 1908 Carl Fischer.'

4 (Title) MOANA HIS BROTHER..... By the Lake (Lange)2 1/4 Min.

Musical score for 'By the Lake' with notation, dynamics like 'modto', and copyright 'Copyright 1925 Robbins Engel.'

5 (Title) ON THE TRAIL OF THE..... Carnival March of the Gnomes (Schroeder).....1 1/2 Min.

Musical score for 'Carnival March of the Gnomes' with notation, dynamics like 'All modto', and copyright 'Copyright 1920 Carl Fischer.'

6 (Title) - MOANA FINDS A VINE..... Forest Fancies (Haines) ¾ Min.

Musical notation for 'MOANA FINDS A VINE' in treble clef, 2/4 time, marked *All.^o mf*. The piece concludes with a fermata. Copyright 1924 Hawkes & Son.

7 (Title) THEN DOWN TO THEIR VILLAGE..... Carnival March of the Gnomes (Schroeder) (From No. 3).... 1 Min.

Musical notation for 'THEN DOWN TO THEIR VILLAGE' in treble clef, 2/4 time, marked *All.^o mod.^o mf*. The piece concludes with a fermata. Copyright 1920 Carl Fischer.

8 (Title) WITHIN THE QUIET OF..... Samoan Boat Song (Bradford) (Cello Solo)..... ¾ Min.

Musical notation for 'WITHIN THE QUIET OF' in treble clef, 2/4 time, marked *Barcarolle*. The piece concludes with a fermata. Copyright 1926 Belwin Inc.

NOTE: Play "P" con sordini strings and flute only.

9 (Title) - MEANWHILE WHAT HAS HAPPENED..... In the Tavern "From the South" (Nicode)..... 2¼ Min.

Musical notation for 'MEANWHILE WHAT HAS HAPPENED' in treble clef, 2/4 time, marked *All.^o giocoso*. The piece concludes with a fermata. Copyright 1910 G. Schirmer.

NOTE: Start from beginning, omit the ¾ movement; cut to following, Tempo Primo in G

10 (Title) GOOD HUNTING Prelude in G Minor (Rachmaninoff) 1 Min.

Musical notation for 'GOOD HUNTING' in bass clef, 2/4 time, marked *All.^o marcia*. The piece concludes with a fermata. Copyright 1920 Carl Fischer.

11 (Title) THE SEA Samoan Boat Song (Bradford)..... ¾ Min.

Musical notation for 'THE SEA' in treble clef, 2/4 time, marked *Barcarolle*. The piece concludes with a fermata. Copyright 1926 Belwin Inc.

NOTE: Play strings only very legato a la vibra too.
12 (Action) NATIVE DIVES FROM CANOE Rondo Capriccioso (Mendelssohn) 2¼ Min.

Musical notation for 'NATIVE DIVES FROM CANOE' in treble clef, 2/4 time, marked *Presto*. The piece concludes with a fermata. Copyright 1915 Ross Jungnickel.

13 (Action) GIRL STANDING IN WATER WITH HUGE CLAM Samoan Boat Song (Bradford)..... 1 Min.

Musical notation for 'GIRL STANDING IN WATER WITH HUGE CLAM' in treble clef, 2/4 time, marked *And.^{te}*. The piece includes dynamic markings *al.*, *mf*, *mf*, *mf*, *arco*, and *rit. e dim. al fine*. The piece concludes with a fermata. Copyright 1926 Belwin Inc.

14 (Title) **MOTHER TA'UNGARES** Samoan Lullaby (Bradford) 3½ Min.

Two staves of musical notation. The first staff is in treble clef with a key signature of one flat and a 2/4 time signature. It begins with the tempo marking "Slowly very legato" and includes dynamic markings "mf", "p subito", and "cresc.". The second staff continues the melody with markings "Lento" and "rit". Copyright information "Copyr. 1926 Belwin Inc." is at the bottom right.

SEGUE: Samoan Love Song (Bradford)

Two staves of musical notation. The first staff is in treble clef with a key signature of one flat and a 2/4 time signature, marked "And^{te} assr.". The second staff is marked "Broad And^{te}" and includes a double bar line with first and second endings. The second ending is marked "dim. e rit.". Copyright information "Copyr. 1926 Belwin Inc." is at the bottom right.

15 (Title) **THE CUSTOM OF THE COUNTRY** Samoan Boat Song (Bradford) ¾ Min.

One staff of musical notation in treble clef with a key signature of one flat and a 2/4 time signature. It is marked "Percardole Solo". Copyright information "Copyr. 1926 Belwin Inc." is at the bottom right.

NOTE: Play strings only very legato a la vibrato.

16 (Action) **BOY PE'A STARTS TO CLIMB TREE** Waltz-Scherzo (Strauss) 3 Min.

One staff of musical notation in treble clef with a key signature of one flat and a 3/4 time signature. It is marked "All^{te}". Copyright information "Copyr. 1919 G. Schirmer" is at the bottom right.

SEGUE Scherzo (Mendelssohn)

One staff of musical notation in treble clef with a key signature of one flat and a 2/4 time signature. It is marked "Alle vivace". Copyright information "Copyr. 1920 G. Schirmer" is at the bottom right.

17 (Title) **SEAS OF THE SOUTH SEA TRADES** Storm Music (Ketelbey) 3½ Min.

One staff of musical notation in treble clef with a key signature of one flat and a 2/4 time signature. It is marked "Molto all. furioso". Copyright information "Copyr. 1924 Bosworth & Co" is at the bottom right.

NOTE: Wave and ocean effects ad lib. Make the D. C.

18 (Title) **PE'A COMES UPON A TELL TALE** Danse des Mirlitons (Tschaikowsky) 1½ Min.

One staff of musical notation in treble clef with a key signature of one flat and a 2/4 time signature. It is marked "Mod^{to} assai". Copyright information "Copyr. 1923 C. Fischer" is at the bottom right.

19 (Action) **BOY PE'A STARTS TO RUB STICKS**..... Moto Perpetuo (Weiss) 1¼ Min.

All: accitato
mf
Copyr. 1924 Geo. Sanders.

20 (Action) **SMOKE APPEARS** Playful Allegro (Savino) 1 Min.

All: giocoso
Copyr 1925 Robbins & Engel

21 (Action) **THEY MARCH AWAY WITH THE ROBBER CRAB** March of the Dwarfs (Grieg)..... 1 Min.

All: modto
Copyr. 1910 G. Schirmer.

22 (Action) **CANOE AT SHORE** Samoan Boat Song (Bradford)..... ¾ Min.

Barely sole
Copyr. 1926 Belwin Inc.

23 (Action) **MOANA THROWS SPEAR**..... Midsummer Night's Dream (Mendelssohn)..... 2½ Min.

All: di molto
Copyr. 1924 Carl Fischer.

24 (Action) **THEY LAND TURTLE ON BEACH**..... Humoresque (Tschaiakowsky) 2 Min.

All: scherz.
Copyr. 1922 C. Fischer.

25 (Action) **MOANA LYING IN WATER**..... Samoan Love Song (Bradford) 1 Min.

Andte capr.
Copyr. 1926 Belwin Inc.

26 (Action) **THREE SHOW IN DISTANCE**..... Scene Dansee from "La Source" (Delibes).....4¼ Min.

Musical notation for item 26. Treble clef, 2/4 time signature. Tempo marking: *All.^{to} mod^{to}*. Copyright: *Copyr. 1912 Ross Junignickel.*

27 (Title) **THE END OF THE DAY**..... Samoan Lullaby (Bradford)3¼ Min.

Musical notation for item 27. Treble clef, 3/4 time signature. Tempo markings: *Slowly*, *Very legato*, *Lento*, *rit.*, *cresc.*. Dynamics: *mf*, *f*, *p subito*. Copyright: *Copyr. 1916 Belwin Inc.*

28 (Action) **MOANA STARTS TO DANCE**..... NOTE: Play "P" strings only con cordini. Samoan Siva Dance (Bradford)3 Min.

Musical notation for item 28. Treble clef, 4/4 time signature. Tempo marking: *Tempo di Bolero*. Copyright: *Copyr. 1916 Belwin Inc.*

29 (Title) **EVERYTHING THAT YOU HAVE SEEN**..... NOTE: Drummer use brushes on S. D. only. Repeat No. 27 "Samoan Lullaby".....¾ Min.

Musical notation for item 29. Treble clef, 3/4 time signature. Tempo marking: *Slowly*.

30 (Title) **THE CONCHO CALL**..... Samoan Concho Call (Bradford).....¼ Min.

Musical notation for item 30. Treble clef, common time signature. Tempo marking: *Mod^{to}*. Copyright: *Copyr. Belwin Inc.*

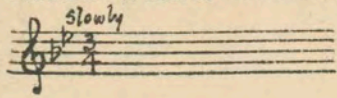
31 (Action) **NATIVES DANCING**..... NOTE: Play on Muted Horn. Repeat No. 28 "Samoan Siva Dance".....¾ Min.

Musical notation for item 31. Treble clef, 4/4 time signature. Tempo marking: *Tempo di Bolero*.

32 (Action) **GIRL LAYS THE MATS**..... NOTE: Drummer use brushes on S. D. only. Overture Tragique (Zerco).....6¼ Min.

Musical notation for item 32. Treble clef, common time signature. Tempo marking: *And^{te} poco Adagio*. Copyright: *Copyr. 1916 Barrav.*

33 (Title) **THREE WEEKS** Repeat No. 27 "Samoaan Lullaby" 3½ Min.



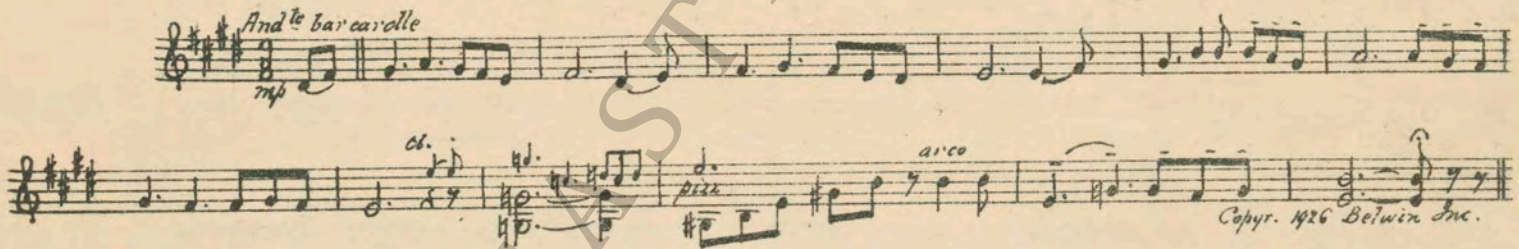
34 (Title) **IN THE FOOTSTEPS OF** Variation from "La Source No. 1" (Delibes) 1 Min.



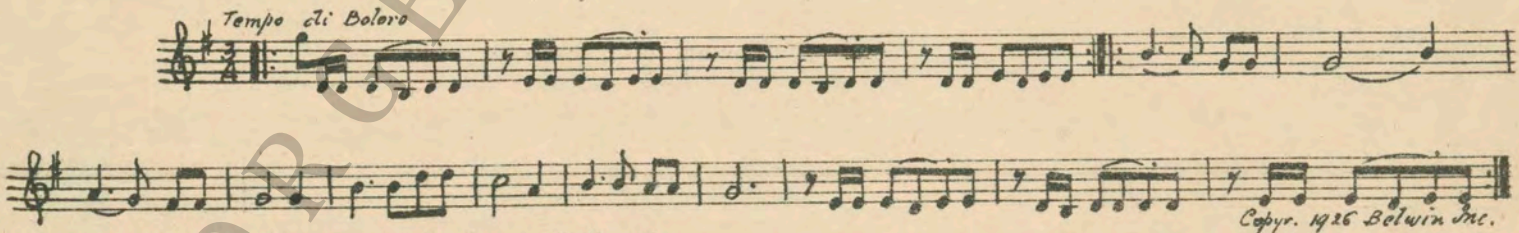
35 (Action) **FADE-IN HILLS** Samoaan Love Song (Bradford) 1 Min.



SEGUE Samoaan Boat Song (Bradford)



36 (Action) **NATIVES START DANCE** Samoaan Siva Dance (Bradford) ¾ Min.



NOTE: Drummer use brushes on S. D. only.

THE END

IMPORTANT NOTE: The four original Samoaan numbers, "Boat Song," "Lullaby," "Love Song" and "Siva Dance," used in connection with this picture, were inspired by the actual crooning from the lips of the natives, and are vitally important for the correct musical presentation, and for that reason should not be substituted for.
Country of Origin, U. S. A.

Complete orchestrations and single piano parts of each separate number contained hereon, can be purchased from **CAMEO MUSIC SERVICE CORPORATION**, 315-317 West 47th Street, New York City.