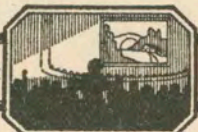


221

Thematic Music  Cue Sheet

M. J. MINTZ (PATENT)
JULY 31, 1923.

EDWIN CAREWE

presents

NAZIMOVA

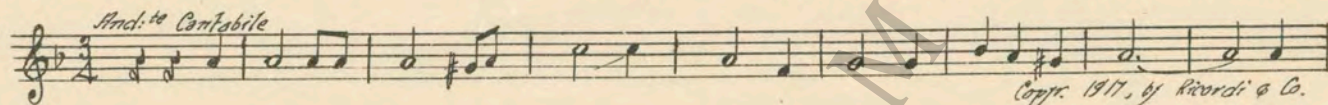
in

"MY SON"

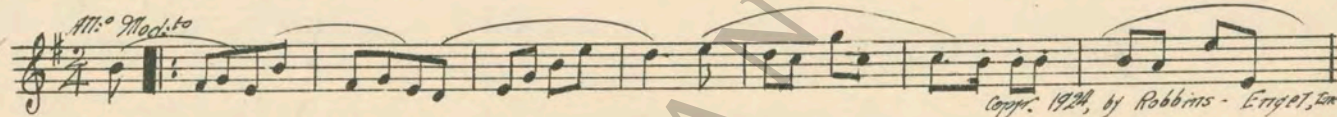
Music compiled by Edward Kilenyi

A FIRST NATIONAL PICTURE

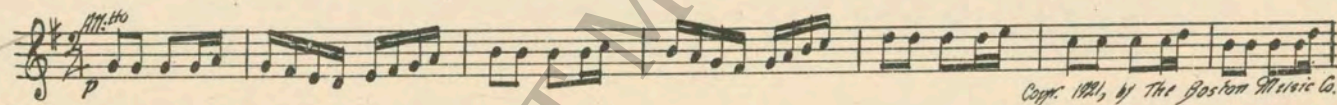
1 AT SCREENING Little Mother of Mine (Burleigh) 1¾ Min.



2 (Title) IN A SHELTERED COVE By the Stream (Rapee-Axt) 1¼ Min.

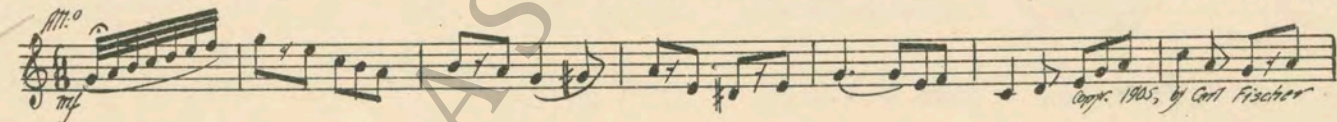


3 (Action) CHILDREN RUN IN Fireflies (Savino) 1¾ Min.

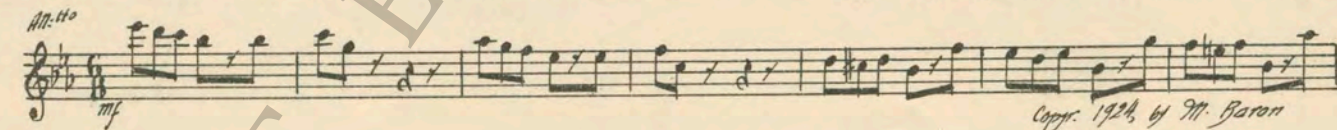


NOTE: Drummer catch bell effect.

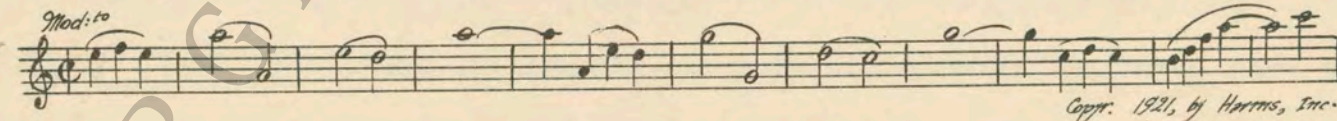
4 (Title) THERE WAS NO LAD The Whistler and His Dog (Pryor) 1 Min.



5 (Action) BOY AT WASHSTAND Prelude to "Stories of Boys" (Baron) 1 Min.



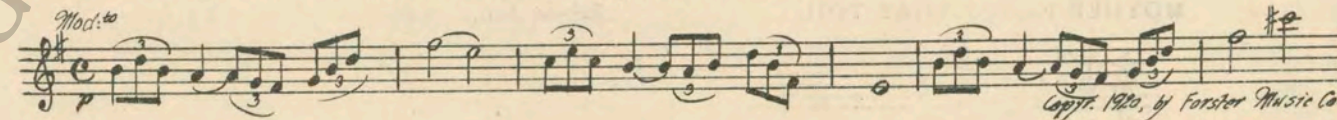
6 (Title) EVERY DAY I ASK Devotion (Herbert) 1 Min.



7 (Title) ROSA PINA Fairy Dance (Grieg) 2½ Min.



8 (Action) SCENE IN STORE Pomponella (Golden) 2¼ Min.



9 (Action) GIRL AT WELL Old Oaken Bucket (Seredy) 1¼ Min.

Musical notation for "GIRL AT WELL" in 3/4 time, marked *Andte* and *p*. Copyright 1919 by Carl Fischer.

10 (Action) CHURCH BELL RINGS Sounds from the Cloister (Axt) 2¾ Min.

Musical notation for "CHURCH BELL RINGS" in 3/4 time, marked *Andte religioso* and *p*. Copyright 1925 by Rudin's E. Rigel.

NOTE: Dummer catch bell effect; repeat 4/4 part is necessary.
11 (Title) IT MAKES ME GLAD Sweetest Story Ever Told (Stults) 1 Min.

Musical notation for "IT MAKES ME GLAD" in 3/4 time, marked *Andte*, *mf*, and *rall.* Copyright 1920 by Oliver Ditson.

12 (Title) WITH THE MORNING THERE Cold, Cold Mammias (Gilbert) 3¼ Min.

Musical notation for "WITH THE MORNING THERE" in 3/4 time, marked *Fox Trot* and *mf*. Copyright 1924 by Leo Feist Inc.

13 (Action) INSERT ON PHONOGRAPH RECORD:
"RED HOT MAMMA" Red Hot Mamma (Rose) (Direct Cue) 2¼ Min.

Musical notation for "RED HOT MAMMA" in 3/4 time, marked *Modto* and *f*. Copyright 1924 by Rainbows Music Co.

14 (Action) PHONOGRAPH STOPS Redzi (Caludi) 3¾ Min.

Musical notation for "PHONOGRAPH STOPS" in 3/4 time, marked *Andte grazioso* and *p*. Copyright 1923 by Hawkes.

15 (Action) GIRL PLAYS ACCORDEON Repeat No. 11 "Sweetest Story Ever Told" 1 Min.

Musical notation for "GIRL PLAYS ACCORDEON" in 3/4 time, marked *Andte* and *mf*.

NOTE: Imitate accordeon effect.
16 (Title) BETTY WAS A FAST WORKER Miss You (Perry) 2 Min.

Musical notation for "BETTY WAS A FAST WORKER" in 3/4 time, marked *Valse* and *f*. Copyright 1925 by Leo Feist.

17 (Title) IT IS THE RITZ ORCHESTRA El Irresistible (Logatti) ½ Min.

Musical notation for "IT IS THE RITZ ORCHESTRA" in 3/4 time, marked *Te de Tango* and *p*. Copyright 1913 by E. Schirmer.

18 (Title) SOFT AND AMOROUS THE MUSIC Amorita (Zamecnik) 1¾ Min.

Musical notation for "SOFT AND AMOROUS THE MUSIC" in 3/4 time, marked *Espagnole* and *f*. Copyright 1920 by Sam Fox.

19 (Action) PEOPLE STOP DANCING Amaryllis (Ketelbey) 2½ Min.

Musical notation for "PEOPLE STOP DANCING" in 3/4 time, marked *Valse modto* and *f*. Copyright 1924 by Deswerth & Co.

20 (Title) MOTHER HANDS THAT TOIL Repeat No. 6 "Devotion" 2¾ Min.

Musical notation for "MOTHER HANDS THAT TOIL" in 3/4 time, marked *Modto*.

21 (Action) SON AT CASH REGISTER Film Theme No. 36 (Kilenyi) 2 Min.

Musical notation for item 21: Treble clef, 2/4 time, Mod^{to}, p-f, pizz arco. Copyright: Cop. 1924 Carl Fischer

22 (Title) I TELL YOU BETTY SMITH'S Rhapsody Appassionata (Ketelbey) 2½ Min.

Musical notation for item 22: Treble clef, 2/4 time, Mod^{to}, f. Copyright: Cop. 1924 Bosworth & Co

23 (Action) GIRL ON BEACH Repeat No. II "Sweetest Story Ever Told" 1½ Min.

Musical notation for item 23: Treble clef, 2/4 time, And^{ino}

24 (Action) CLOSE-UP OF DANCING STEPS Vlad Tango (Firpo) 1¼ Min.

Musical notation for item 24: Treble clef, 2/4 time, Mod^{to}, mf. Copyright: Cop. 1924 Ed. D. Marks

25 (Title) INTO ANA SILVA'S MOTHER HEART Dear Little Mother of Mine (Sterling) 2 Min.

Musical notation for item 25: Treble clef, 3/8 time, Slowly, p. Copyright: Cop. 1914 Forster Music

26 (Title) MY ANA, IT MAKES ME A Vineyard Idyl (Didier) 1 Min.

Musical notation for item 26: Treble clef, 3/4 time, Mod^{to}, mf. Copyright: Cop. 1918 G. Schirmer

27 (Action) BETTY AND SON MEET Listening (Berlin) 1 Min.

Musical notation for item 27: Treble clef, 3/4 time, Valse. Copyright: Cop. 1924 Irving Berlin Inc

28 (Action) MOTHER SEEN Love's Awakening (Ketelbey) 1 Min.

Musical notation for item 28: Treble clef, 2/4 time, And^{te}, p. Copyright: Cop. 1924 Bosworth & Co

29 (Action) SHERIFF COMES TO MOTHER Recitativo No. 1 (Rapee-Axt) 4 Min.

Musical notation for item 29: Treble clef, 2/4 time, Mod^{to}, f. Copyright: Cop. 1924 Robbins Engel Inc

30 (Action) MAN BRINGS BRANCHES WITH FLOWERS Wings of Love (Fuzy) 2 Min.

Musical notation for item 30: Treble clef, 3/8 time, And^{ino}. Copyright: Cop. 1924 Ludwig M.P. Co

31 (Action) SHE FINDS NECKLACE IN VASE Silence—no music ¼ Min.

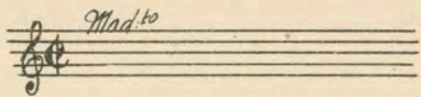
32 (Title) MY SON Dear Little Boy of Mine (Ball) 2¼ Min.

Musical notation for item 32: Treble clef, 3/8 time, Mod^{to}. Copyright: Cop. 1918 M. Witmark & Sons

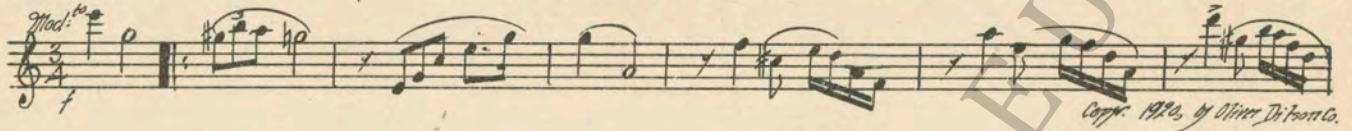
33 (Title) WHEN CAPTAIN BAWLY SAILS Repeat No. 11 "Sweetest Story Ever Told" 1 Min.

Musical notation for item 33: Treble clef, 2/4 time, And^{ino}

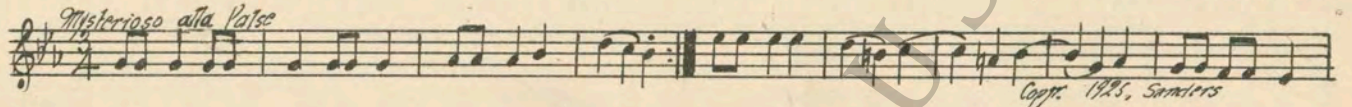
34 (Action) MOTHER ALONE Repeat No. 6 "Devotion" 2¼ Min.



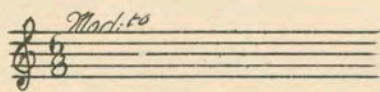
35 (Title) YOU ARE NOT GOING TO Appassionato (Borch) 2 Min.



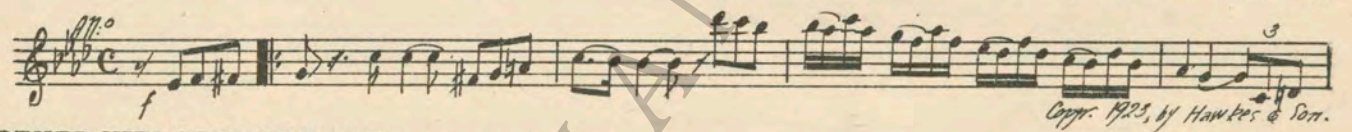
36 (Action) MOTHER TURNS OFF LIGHT Fleeting Shadows (Weiss) 2 Min.



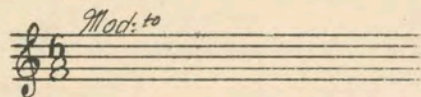
37 (Title) MY BOY, MY BABY Repeat No. 32 "Dear Little Boy of Mine" ¾ Min.



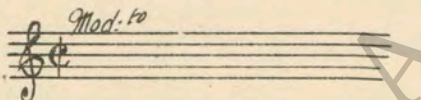
38 (Title) TAKE IT BACK TO HATTIE Passion (Borch) 1¼ Min.



39 (Action) MOTHER HITS SON WITH AXE Silence—no music 2 Min.
SEGUE: Repeat No. 32 "Dear Little Boy of Mine"



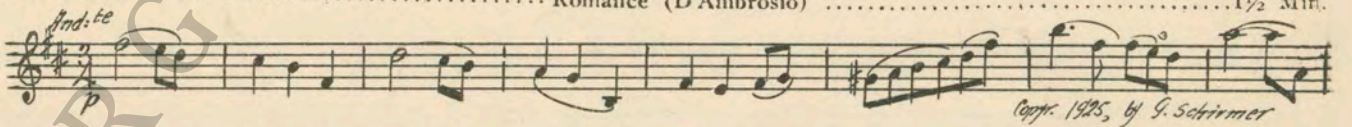
40 (Title) TAKE HIM WITH YOU Repeat No. 6 "Devotion" 1½ Min.



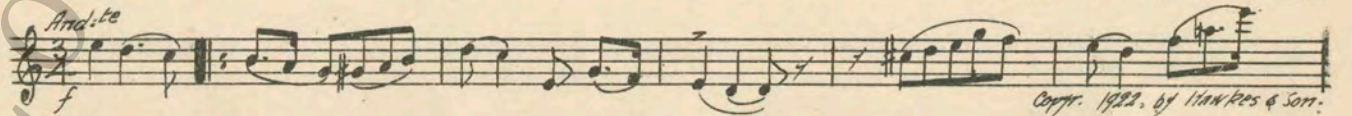
41 (Title) SAILING TONIGHT CAPTAIN Film Theme No. 38 (Kilenyi) 2½ Min.



NOTE: Play 1st part only, slowly.
42 (Title) YOUR BOYS Romance (D'Ambrosio) 1½ Min.



43 (Action) BETTY SEEN IN HER RICH HOME Passionato (Borch) 1½ Min.



44 (Action) MOTHER AND SON SEEN Repeat No. 1 "Little Mother of Mine" 2 Min.

Country of origin, U. S. A.

THE END

Complete Orchestrations and single parts of all compositions contained herein can be purchased from CAMEO MUSIC SERVICE CORPORATION, 112-118 West 44th Street, New York City