

3 Themes

1927

60
25
75



M. J. MINTZ (PATENT)
JULY 31, 1923.

GRETA GARBO in THE MYSTERIOUS LADY

with

Conrad Nagel

Directed by Fred Niblo

Based on the novel, "War in the Dark"
by Ludwig Wolff

Treatment and Continuity by Bess Meredyth
Music compiled by Ernst Luz

A Metro-Goldwyn-Mayer Production

Length of film 9 Reels, 7710 feet

Maximum projection time 1 Hour 25 Minutes



- 1 AT SCREENING Merry Widow Waltz (Lehar) 1 1/4 Min.

Valse

Copyr. Emil Ascher

- 2 (Title) VIENNA BEFORE THE WAR Luz Symp. Color Classic No. 4 LIGHT BLUE 1 Min.

Poco agitato

Copyr. 1927 Music Buyers Corp.

- 3 (Action) AUTOMOBILE INTERIOR Luz Symp. Color Classic No. 4 BROWN 1 Min.

All. 60

Copyr. 1927 Music Buyers Corp.

- 4 (Action) AFTER AUTOS MOVE Repeat No. 2 Light Blue 1 1/2 Min.

Poco agitato

- 5 (Action) CONRAD NAGEL ENTERS THEATRE BOX... Prelude to the 3rd Act Opera "Gobi" (Reiser) 2 1/2 Min.

Lento quasi Andte

Copyr. 1927 Carl Fischer

- 6 (Action) AFTER "BUT THIS IS YOUR SEAT"..... Aria from La Tosca Selection (Puccini) LIGHT GREEN.... 1 1/4 Min.

Lento

Copyr. 1903 G. Ricordi

- 7 (Title) ACT III Continue No. 6 1/2 Min.

Lento

①

D - end of act - people leaving

8 (Action) END OF ACT. PEOPLE LEAVINGRustle of Spring (Sinding)1¼ Min.

Agitato
 Musical notation for 'Rustle of Spring' in 2/4 time, marked *Agitato*. Copyright 1908 Carl Fischer.

9 (Action) EXTERIOR SCENE. NAGEL TALKS TO GARBOContinue No. 81¼ Min.

Agitato
 Musical notation for 'Continue No. 8' in 2/4 time, marked *Agitato*.

10 (Action) AFTER GARBO GETS OUT OF CARRIAGE...Star Night (Marquardt) ..*Red*.....2¼ Min.

② *Andte*
 Musical notation for 'Star Night' in 3/4 time, marked *Andte*. Copyright 1925 Music Buyers Corp.

11 (Action) TELEGRAM ON SCREENRepeat No. 6 Light Green—Piano alone1 Min.

① *Lento*
 Musical notation for 'Repeat No. 6 Light Green—Piano alone' in common time, marked *Lento*.

12 (Action) MAN STOPS PLAYING PIANORepeat No. 6 Light Green—Piano and Voice1 Min.

Lento
 Musical notation for 'Repeat No. 6 Light Green—Piano and Voice' in common time, marked *Lento*.

13 (Action) LIGHTS FLASH ON SCREENRepeat No. 10 RED2¼ Min.

② *Andte*
 Musical notation for 'Repeat No. 10 RED' in 3/4 time, marked *Andte*.

14 (Action) MAN EMBRACES GARBO SECOND TIMEChant Russe (Lalo) WHITE2½ Min.

③ *Lento*
 Musical notation for 'Chant Russe' in 3/4 time, marked *Lento*. Copyright 1921 Photo Play Mus. Co.

15 (Action) GARBO CLOSSES DOOR AFTER TITLE: "TOMORROW NIGHT"Repeat No. 10 Red¾ Min.

② *Andte*
 Musical notation for 'Repeat No. 10 Red' in 3/4 time, marked *Andte*.

15 (Action) FADE-OUT TO AUTO WHEELIolliv (Zamecnik) YELLOW1 Min.

Allo
 Musical notation for 'Iolliv' in 2/4 time, marked *Allo*. Copyright 1925 Sam Fox.

17 (Action) LOVERS JUMP OVER WALLRepeat No. 14 White¾ Min.

③ *Lento*
 Musical notation for 'Repeat No. 14 White' in 3/4 time, marked *Lento*.

18 (Action) SECOND TIME DUCKS CROSS SCREENRepeat No. 16 Yellow1 Min.

Allo
 Musical notation for 'Repeat No. 16 Yellow' in 2/4 time, marked *Allo*.

19 (Action) GARBO LOOKS INTO WATERRepeat No. 14 White2 Min.

③ *Lento*
 Musical notation for 'Repeat No. 14 White' in 3/4 time, marked *Lento*.

20 (Title) CAN THERE EVER BE ANOTHER DAY Repeat No. 16 Yellow 1/2 Min.

Andte Largo

21 (Action) GARBO TURNS FROM WINDOW Facing Death (Bece) BLACK 1/2 Min.

4 *Andte Largo*

22 (Action) RAILROAD STATION SCENE Joyous Allegro (Engleman) 3/4 Min.

Andte Largo

23 (Title) WHY UNCLE ERIC Repeat No. 21 Black 2 1/4 Min.

4 *Andte Largo*

24 (Action) TRAIN MAN RINGS BELL Cute and Cunnin' (Kempinski) 1 Min.

Andte Leggiero

25 (Action) TRAIN WHEELS CROSS SCREEN Symp. Incidentals No. 6 (Marquardt) 3 1/4 Min.

Andte con gravita

26 (Action) CAR WHEELS CROSS SCREEN Marionette (Arndt) 3/4 Min.

Andte

27 (Action) NAGEL FINDS PAPERS ARE MISSING Repeat No. 21 Black 1 Min.

4 *Andte Largo*

28 (Action) FADE-OUT AFTER NOTE ON SCREEN Processional (Savino) 1 Min.

Marziale

29 (Action) NOTE: Trumpet watch screen—Muffled drums. Repeat introduction if necessary. COURT MARTIAL PAPER ON SCREEN Misterioso No. 2 ((Hintz) 2 Min.

Andte con moto

30 (Title) NOTE: Play in march tempo. Muffled drums. WARSAW March of the Giants (Cowen) 1 1/2 Min.

Andte con moto

31 (Action) DOORS CLOSED Repeat No. 25 Symphonic Incid. No. 6 2 Min

Andte con gravita

D. Fade out Garbo and officer

32 (Action) FADE-OUT GARBO AND OFFICER Repeat No. 29 *Mysterioso* 1 Min.

Andte con moto
Crafty Spy -

33 (Action) KEY IN JAIL CELL DOOR Repeat No. 21 *Black* 3 Min.

4
Andte Largo
Mist, Dream -

34 (Action) FOREIGN PROGRAM ON SCREEN There's a Boatman On the Volga (Pasternack) 1½ Min.

Modto

35 (Action) ORCHESTRA STOPS PLAYING ... Regal Scene (Schertzing) 1 Min.

Modto

Piano

36 (Action) MAN SITS DOWN AT PIANO Piano alone to screen ½ Min.
37 (Action) GRETA GARBO SHOWS Repeat No. 21 *Black* ½ Min.

Andte Largo

38 (Action) MAN STARTS TO PLAY PIANO Repeat No. 6 *Light Green* (Piano only) 1 Min.

1
Lento

39 (Action) MAN STOPS PLAYING PIANO Repeat No. 14 *White* 1¼ Min.

3
Lento

40 (Action) MAN PLAYS AFTER TITLE: "YOU WERE PLAYING TOSCA'S SONG" Repeat No. 6 *Light Green* (Piano and Voice) 1¼ Min.

1
Lento

41 (Action) END OF SONG. GUESTS APPLAUD Repeat No. 10 *Red* 1¾ Min.

2
Andte

42 (Action) GARBO GOES BACK UPSTAIRS Repeat No. 14 *White* 1¼ Min.

3
Lento

43 (Action) DOOR KNOB TURNS Repeat No. 10 Red 1 Min.

② *Andte*
Musical notation for item 43: Treble clef, 3/4 time signature, one measure of music.

44 (Action) FADE-OUT OF SPY OFFICER Repeat No. 21 Black 1 Min.

④ *Andte Largo*
Musical notation for item 44: Treble clef, 6/8 time signature, one measure of music.

45 (Action) FADE-OUT OF OFFICER (BORIS) AT DESK.. Russian Life Waltz (Katz) 1 Min.

Valse lente
Musical notation for item 45: Treble clef, 3/4 time signature, one measure of music. *Copyr. 1915 Carl Fischer*

46 (Action) GARBO AND BORIS SHOW ON SCREEN.....Prelude-Kunihild (Kistler) 3 Min.

Andte
Musical notation for item 46: Treble clef, 6/8 time signature, one measure of music. *Copyr. 1917 Carl Fischer*

47 (Action) GARBO OPENS DOOR In Flowerland (Golden) 2 3/4 Min.

Lento
Musical notation for item 47: Treble clef, 3/4 time signature, one measure of music. *Copyr. 1919 Photo Play Mus. Co*

48 (Action) NOTE: Play introduction and waltz.
MAN PLAYS PIANO AFTER TITLE:
"SING THE SONG FROM TOSCA"..... Repeat No. 6 Light Green (Voice and Piano) 1 Min.

① *Lento*
Musical notation for item 48: Treble clef, 6/8 time signature, one measure of music.

49 (Action) END OF SONG. GUESTS APPLAUD Repeat No. 21 Black 1 Min.

④ *Andte Largo*
Musical notation for item 49: Treble clef, 6/8 time signature, one measure of music.

50 (Title) PLEASE BORIS, NO MORE Agitato Misterioso (Bece) 1 3/4 Min.

Agitato
Musical notation for item 50: Treble clef, 3/4 time signature, one measure of music. *Copyr. 1926 Schlesinger*

51 (Action) PIANIST ENTERS ROOM Valse Fascination (Grey) 2 Min.

Valse
Musical notation for item 51: Treble clef, 3/4 time signature, one measure of music. *Copyr. 1917 Sam Fox*

52 (Action) GARBO GOES DOWN STAIRS Alleg. Mist. Notturmo (Borch) 1 3/4 Min.

All.^o
Musical notation for item 52: Treble clef, 6/8 time signature, one measure of music. *Copyr. 1918 G. Schirmer*

53 (Title) MY CAR IS OUTSIDE Repeat No. 14 White 1 Min.

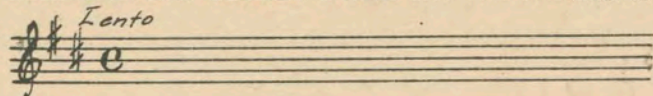
③ *Lento*
Musical notation for item 53: Treble clef, 6/8 time signature, one measure of music.

54 (Action) BORIS SHOWS AFTER TITLE: "YOU DO BELIEVE" Repeat No. 21 Black 3/4 Min.

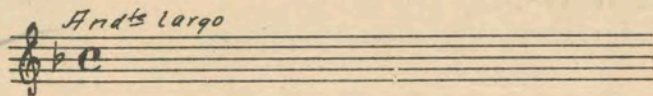
Andte Largo
Musical notation for item 54: Treble clef, 6/8 time signature, one measure of music.

Obsession
"It Doesn't Matter"

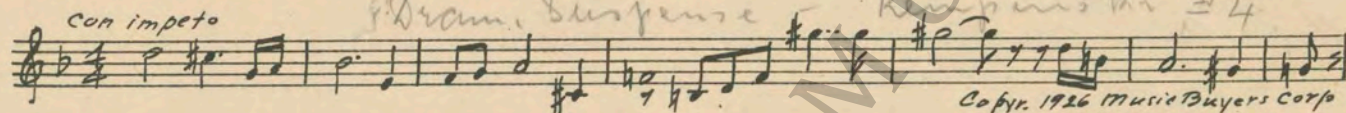
55 (Action) GARBO OPENS SECRET DOOR Repeat No. 14 White 1/2 Min.



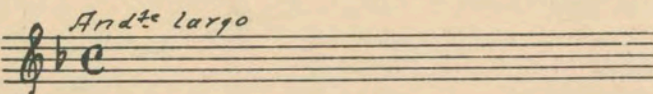
56 (Action) BORIS ON WITH GARBO Repeat No. 21 Black 2 Min.



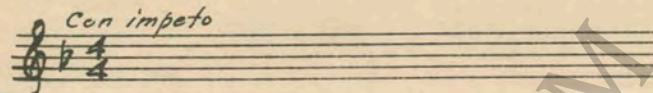
57 (Title) IT DOESN'T MATTER Damnation (Marquardt) 1 Min.



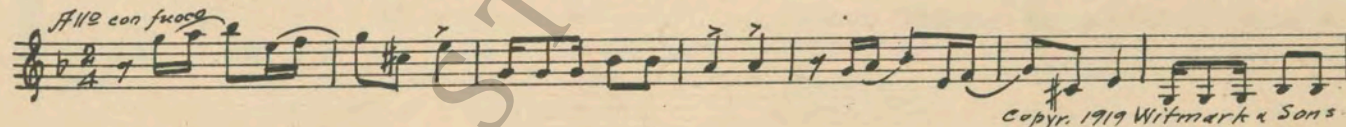
58 (Title) BRING THE PRISONER HERE Repeat No. 21 Black 3/4 Min.



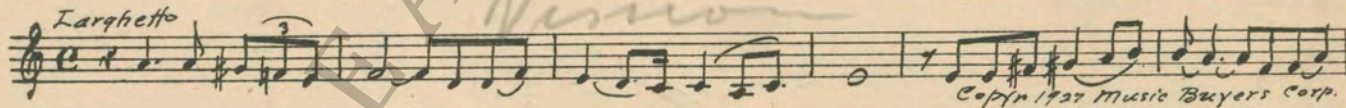
59 (Title) THE STATE CAN Repeat No. 57 "Damnation" 3/4 Min.



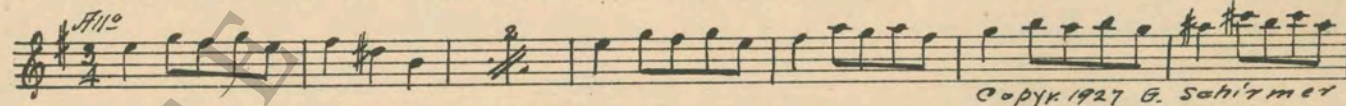
60 (Action) STOP SHORT WITH SHOT AND SEGUE..... The Cossacks (Bendix) 1 Min.



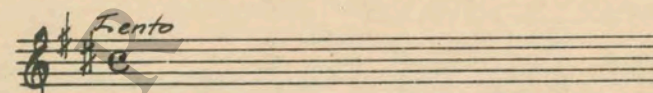
61 (Action) AFTER SECOND DANCING SCENE Captive's Lament (Marquardt) 1 1/2 Min.



62 (Action) OFFICER OPENS DOOR Diabolical Allegro (Bergunker) 1 1/2 Min.



63 (Action) TRAIN CROSSES SCREEN Repeat No. 14 White 1 Min.



THE END

Proper Orchestral rest period is Numbers 21 to 32 inclusive.
NOTE:—The repetition of numbers in this cue sheet is simplified by the use of the "LUZ" SYMPHONIC COLOR GUIDE, sold by Music Buyers Corporation, 1520 Broadway, New York City. The color suggested for repetition of numbers designates the mood or emotion and is used as a code for such repetitions.
Country of Origin, U. S. A.

Complete orchestrations and single piano parts of each separate number contained hereon, can be purchased from CAMEO MUSIC SERVICE CORPORATION, 315-317 WEST 47TH STREET, NEW YORK CITY.