

M. J. MINTZ (PATENT)  
JULY 31, 1923.

British National Pictures, Ltd.

present

**DOROTHY GISH**

(Courtesy of Inspiration Pictures, Inc.)

in

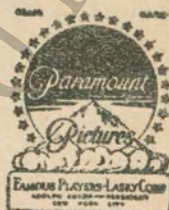
**"NELL GWYN"**

By Marjorie Bowen

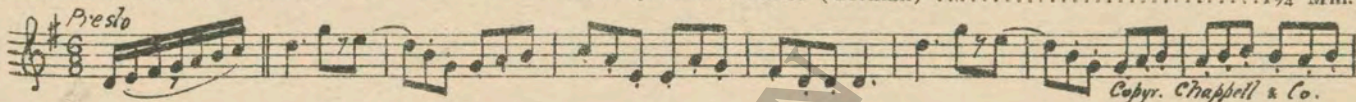
Scenario and direction by Herbert Wilcox

Music compiled by James C. Bradford

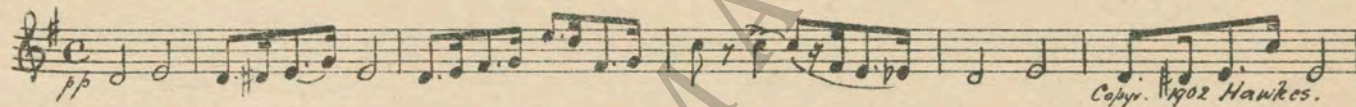
*A Paramount Picture*



- 1 AT SCREENING ..... Merrymaker's Dance (German) ..... 1 3/4 Min.



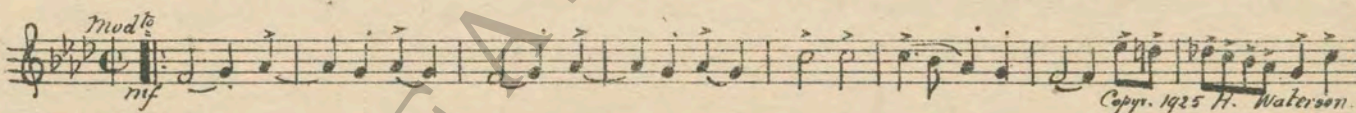
- 2 (Action) NELL SITS ON FLOOR ..... The Coster's Wooing (Rimmer) ..... 1 1/2 Min.



- 3 (Title) STAND HO, THE QUEEN ..... March of the Peasants (V. Weber) ..... 1/2 Min.



- 4 (Title) MEANWHILE IN A CORNER OF WHITE HALL ..... Song of the Vagabonds (Friml) ..... 1 1/4 Min.



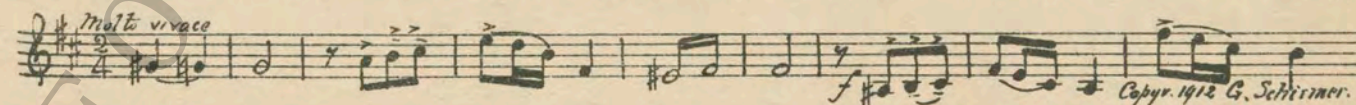
- 5 (Title) OLD DRURY LANE ..... At the Fair (Coates) ..... 3/4 Min.



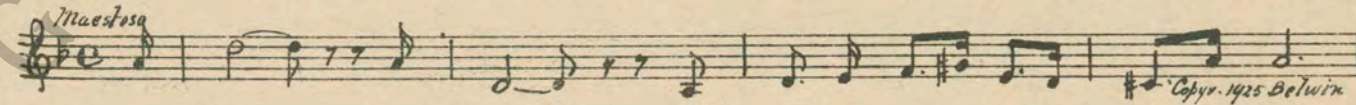
- 6 (Action) THE KING APPEARS ..... Fame and Glory (Matt) ..... 2 1/4 Min.



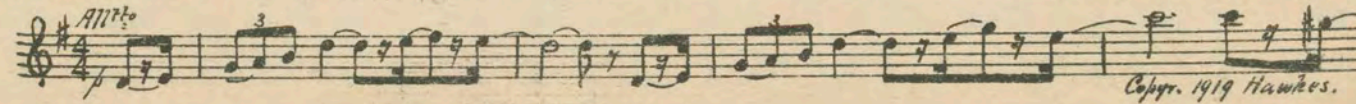
- 7 (Action) NELL ENTERS THEATRE ..... Scenes from an Imaginary Ballet (Taylor) ..... 1 Min.



- 8 (Title) SOME ACTRESSES ARE MADE ..... Recitativo Heroic (Rapee) ..... 1 1/4 Min.



- 9 (Title) AS OLD DRURY LANE THEATRE ..... Cinderella's Wedding (Ancliffe) ..... 2 3/4 Min.



10 (Action) NELL AND KING ENTER TAVERN.....In the Tavern (Jensen) .....1¼ Min.

Musical notation for 'In the Tavern' (Jensen), 1¼ Min. *All<sup>to</sup>* Copyr. 1911 G. Schirmer.

11 (Title) WHILST THE KING SUPPED .....Valse Mysterieuse (Baron) .....1 Min.

Musical notation for 'Valse Mysterieuse' (Baron), 1 Min. *Valse lento* Copyr. 1925 M. Baron

12 (Action) FLASH-BACK TO NELL AND KING .....Forest Fancies (Haines) .....¾ Min.

Musical notation for 'Forest Fancies' (Haines), ¾ Min. *All<sup>to</sup>* *mf* Copyr. 1924 Hawkes.

13 (Action) NELL STARTS TO ACT .....Forest Fancies (Haines) .....¾ Min.

Musical notation for 'Forest Fancies' (Haines), ¾ Min. *And<sup>te</sup> cantabile* Copyr. 1921 Hawkes.

14 (Action) NELL STOPS ACTING .....Humoresque (Tschaiakowsky) .....2½ Min.

Musical notation for 'Humoresque' (Tschaiakowsky), 2½ Min. *All<sup>to</sup>* Copyr. 1922 C. Fischer.

15 (Title) THE KING REDEEMS HIS DEBT .....Romance (German) .....½ Min.

Musical notation for 'Romance (German)', ½ Min. *And<sup>te</sup> cantabile* Copyr. Chappell & Co.

16 (Action) NELL ENTERS HER HOME .....Repeat No. 1 "Merrymaker's Dance" .....½ Min.

17 (Action) LADY CASTLEMAINE AND KING .....Repeat No. 11 "Valse Mysterieuse" .....1¼ Min.

18 (Title) THE ORDER OF THE BATH .....Butterfly (Densmore) .....2¾ Min.

Musical notation for 'Butterfly' (Densmore), 2¾ Min. *All<sup>o</sup>* Copyr. 1916 G. Schirmer.

19 (Title) I HAVE A MESSAGE FROM THE KING.....THEME: Nell Gwyn .....2¼ Min.

Musical notation for 'THEME: Nell Gwyn', 2¼ Min.

20 (Action) NELL CALLS MEN FRIENDS .....Amour Coquet (Friml) .....1½ Min.

Musical notation for 'Amour Coquet' (Friml), 1½ Min. *And<sup>te</sup>* Copyr. 1923 G. Schirmer

21 (Title) NELL GWYN SEIZED AT THE CHANCE .....Polonaise (Bach) .....1¾ Min.

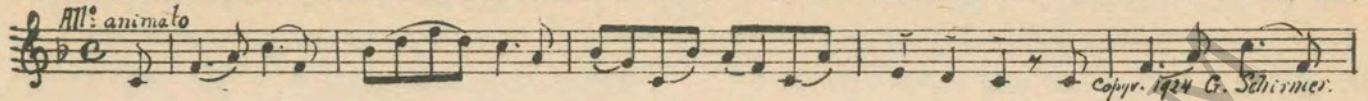
Musical notation for 'Polonaise (Bach)', 1¾ Min. *Mod<sup>to</sup> energico* Copyr. 1924 G. Schirmer.

22 (Action) KING KISSES HER HAND .....Repeat Theme No. 19 .....1 Min.

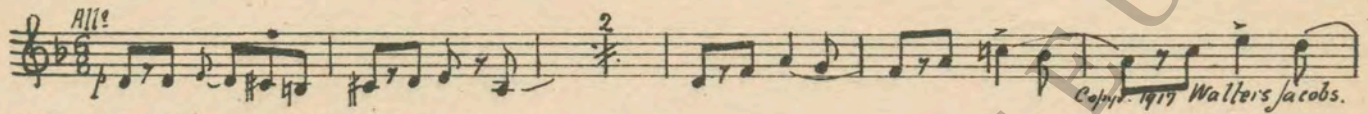
23 (Title) NELLY SOON LEARNT .....The Festivities (Stanley) .....1½ Min.

Musical notation for 'The Festivities' (Stanley), 1½ Min. *Mod<sup>to</sup> vivace* Copyr. 1903 Hawkes.

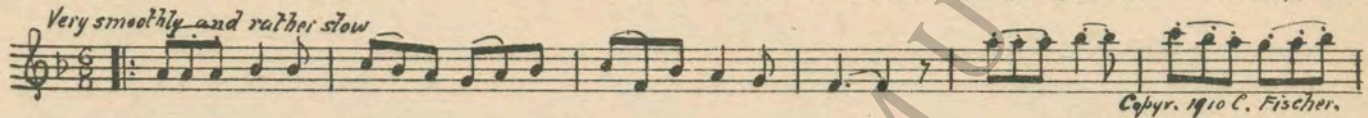
24 (Action) FOLLOWING APPLAUSE AS NELL APPEARS The Merry Farmer (Schumann) ..... 1¼ Min.

*All.<sup>o</sup> animato*  
  
Copyr. 1924 G. Schirmer.

25 (Action) NELL LIES DOWN ON STAGE ..... Funeral March of a Marionette (Gounod) ..... ½ Min.

*All.<sup>o</sup>*  
  
Copyr. 1919 Walters Jacobs.

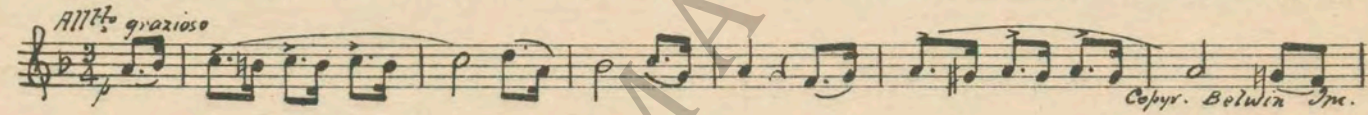
26 (Action) NELL ENTERS DRESSING ROOM — KING  
FOLLOWS  
27 (Title) FROM DRURY LANE TO ST. JAMES..... Repeat Theme No. 19 ..... 1¾ Min.  
Drink to Me Only With Thine Eyes (Wright)..... 1½ Min.

*Very smoothly and rather slow*  
  
Copyr. 1910 C. Fischer.

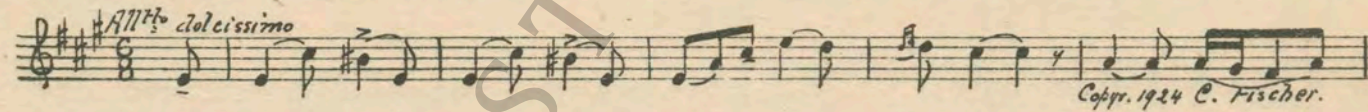
28 (Title) BUT THE UPS AND DOWNS..... The Rose (Myddleton) ..... 3½ Min.

*All.<sup>o</sup> mod.<sup>o</sup>*  
  
Copyr. 1903 Hawkes

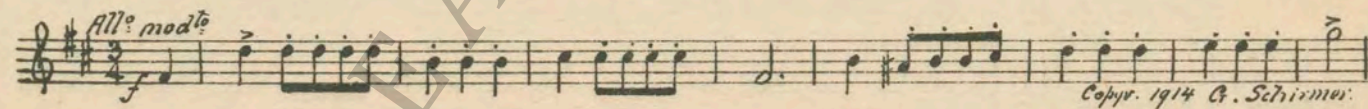
29 (Title) BUT LADY CASTLEMAINE ..... Minuet (Beethoven) ..... ¾ Min.

*All.<sup>o</sup> grazioso*  
  
Copyr. Belwin Inc.

30 (Title) FROM THE COLD COLD GROUND ..... Song—Film Theme No. 33 (Grieg-Roberts) ..... ½ Min.

*All.<sup>o</sup> dolcissimo*  
  
Copyr. 1924 C. Fischer.

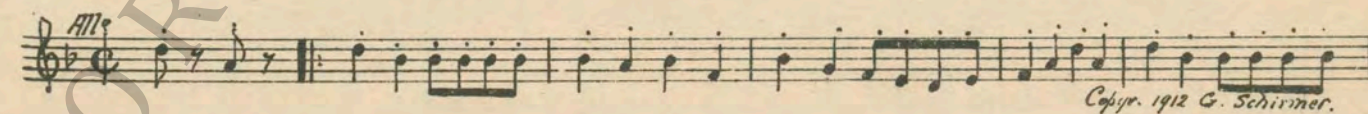
31 (Title) UP THE SOCIAL SCALE ..... Minuet (Schubert) ..... 2½ Min.

*All.<sup>o</sup> mod.<sup>o</sup>*  
  
Copyr. 1914 G. Schirmer.

32 (Action) LADY CASTLEMAINE ENTERS ..... Gavotte-Intermezzo (Bazzini) ..... 1½ Min.

*All.<sup>o</sup>*  
  
Copyr. 1909 G. Schirmer.

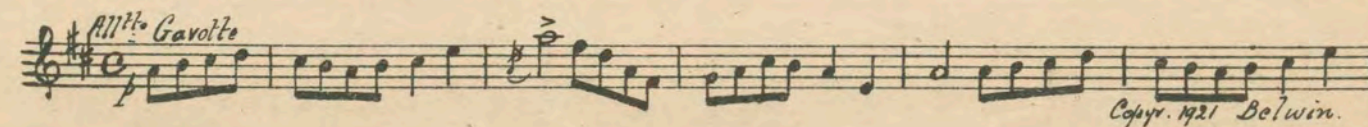
33 (Title) BUT THE LONDON STREETS ..... Gavotte (Raff) ..... ¾ Min.

*All.<sup>o</sup>*  
  
Copyr. 1912 G. Schirmer.

34 (Action) NELL RISES—NELL WITH BIG HAT..... Whims of Love (Baron) ..... 3¾ Min.

*All.<sup>o</sup>*  
  
Copyr. 1922 Belwin.

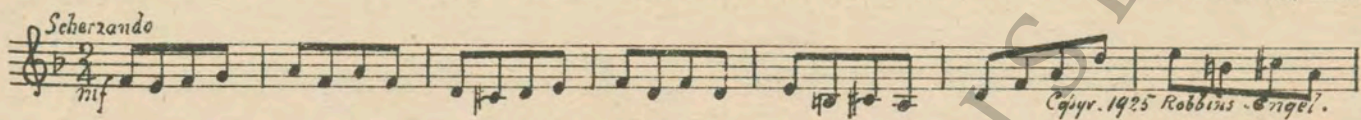
35 (Title) NELL OF COURSE HAD TO ENDURE..... La Petite Duchesse (Baron) ..... 1 Min.

*All.<sup>o</sup> Gavotte*  
  
Copyr. 1921 Belwin.

36 (Action) NELL SEES LADY CASTLEMAINE ..... Aubade Printaniere (Lacombe) ..... 1½ Min.



37 (Action) CLOSE-UP OF LADY CASTLEMAINE - ANGRY ..... Scherzando Hurry (Frey) ..... 1¼ Min.



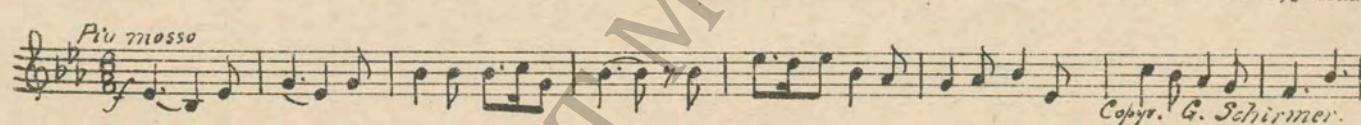
38 (Title) A FESTIVE COMPANY ..... Fete Boheme (Massenet) ..... 2¾ Min.



39 (Title) NO KING JAMES FOR ME ..... Scherzo (Mendelssohn) ..... 2½ Min.

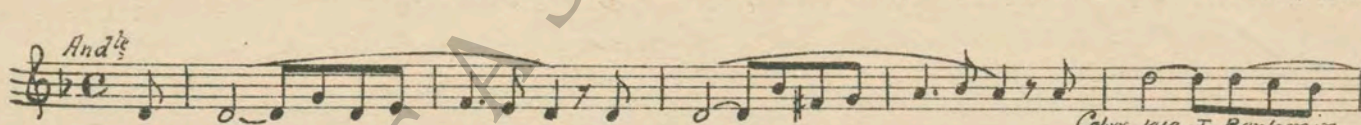


40 (Title) A HEALTH TO NELL GWYN ..... Robin Hood Selection (DeKoven) ..... ½ Min.



41 (Title) THE NEXT DAY WAS NELL'S BIRTHDAY... Repeat Theme No. 19 ..... 1 Min.

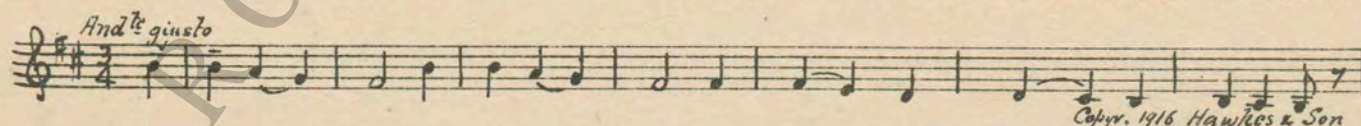
42 (Action) KING IN BED ILL ..... Pique Dame (Tschaikowsky) ..... ¾ Min.



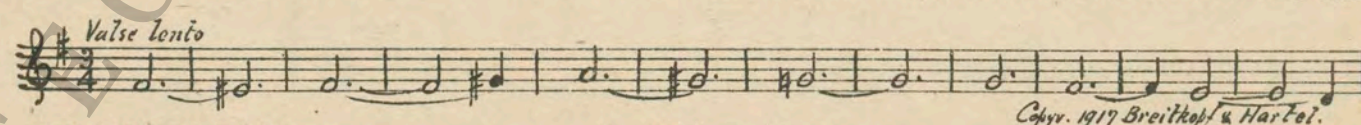
43 (Action) FLASH-BACK TO NELL ..... Theme in Bb (Mendelssohn) ..... ½ Min.



44 (Title) THERE WILL BE NO TOMORROW ..... Andante Pathetique Symphony No. 6 (Tschaikowsky) ..... 1½ Min.



45 (Action) THE KING'S HAND FALLS ..... Valse Triste (Sibelius) ..... 2 Min.



46 (Title) THE KING IS DEAD ..... Repeat Theme No. 19 ..... ¾ Min.

THE END

Country of Origin, U. S. A.

Complete orchestrations and single piano parts of each separate number contained hereon, can be purchased from CAMEO MUSIC SERVICE CORPORATION, 315-317 West 47th Street, New York City.

95:2128:1