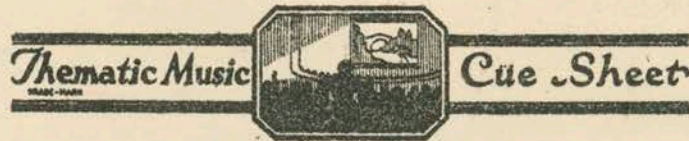


1935
Love theme
a kiss from you
maffay

Met
Sugar



M. J. MINTZ (PATENT)
JULY 21, 1923.

ADOLPH ZUKOR and JESSE L. LASKY

present

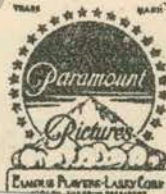
AN ALLAN DWAN PRODUCTION "NIGHT LIFE OF NEW YORK"

with
Rod La Rocque, Dorothy Gish, Ernest Torrence
and George Hackathorne

By Edgar Selwyn

Screen play by Paul Schofield

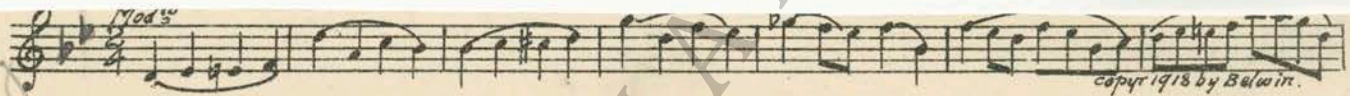
Music compiled by James C. Bradford



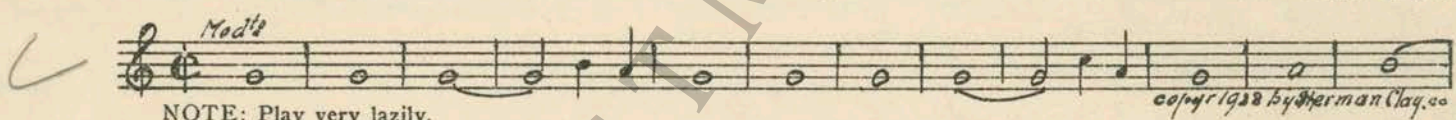
1. Street of N.Y. Red Hill Sel.

MUSEUM

cleaner
coming



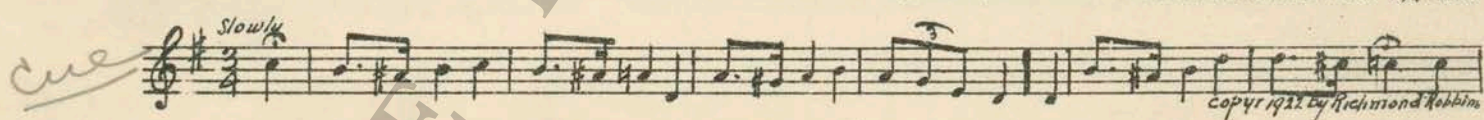
3 (Action) BUTLER ENTERS BEDROOM Sleep (Lebieg) 1 Min.



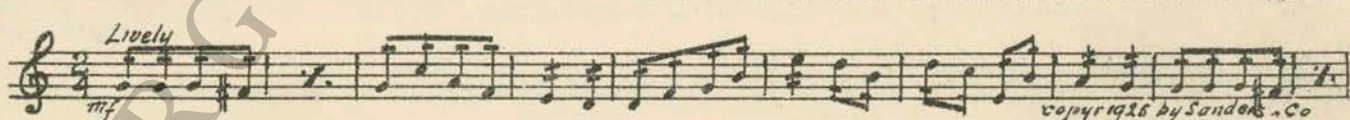
4 (Action) RONALD SITS ON SOFA WITH FATHER Fleurette d'Amour (Fletcher) 1 1/4 Min.



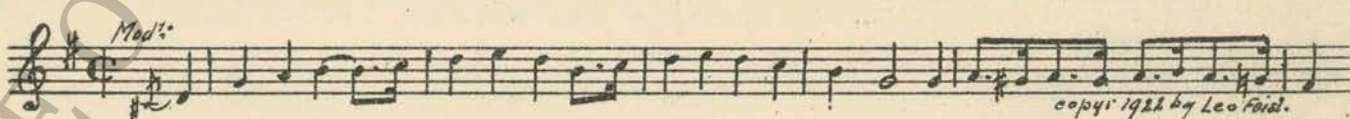
5 (Title) AS RONALD KNEW Sweet Genevieve (Tucker) 1 1/4 Min.



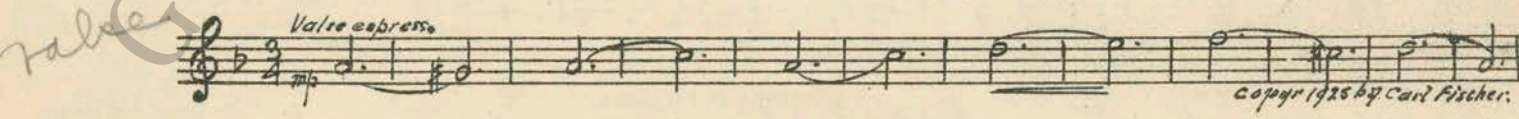
6 (Title) ONE-THIRTY P. M. Thrills (Sanders) 1 1/4 Min.



7 (Action) RONALD STOPS CAR The 19th Hole (Wenrich) 3/4 Min.



8 (Title) TWO-THIRTY P. M. Valse Charmante (Chenoweth) 1 1/4 Min.



9 (Title) FOUR-THIRTY P. M. Bluette (Aitken) 3/4 Min.



10 (Title) RONALD IMAGINED NEW YORK Sidewalks of New York "Old Timers" (Lake) 2½ Min.

Valse

NOTE: Start with "Sidewalks of New York."
copyr by Carl Fischer.

11 (Title) HELLO SWEETIE My Sweetie's Sweeter Than That (Fiorito) 1 Min.

my sugar
Mod^{to}

copyr 1913 by Leo Foid.

12 (Title) GET ME BENTLEY AND COMPANY A Little Dance (Beaumont) 3½ Min.

Gavotte

copyr 1925 by G. Schirmer.

Shen
..... ¾ Min.

14 (Title) AT EIGHT-THIRTY Give My Regards to Broadway (Cohan) 1 Min.

March

copyr by Richmond Robbins.

15 (Title) THEN THREE HOURS Oh Mister (Frey) ½ Min.

All. Mod^{to}
mf

copyr 1929 by Robbins Engel.

16 (Title) AT ELEVEN-THIRTY SCHOOL LETS OUT ... Valse September (Godin) 1 Min.

Valse.

copyr 1910 by E.B. Marks.

17 (Action) FONTANA AND MASS FINISH DANCE Charleston (Johnson) 1¼ Min.

one
Jazz

copyr 1923 by Harris Inc.

18 (Title) AT A FIFTH AVENUE Ogo Pogo (Strong) 4 Min.

Big Boy
Jazz sva.

copyr 1925 by Sam Fox Pub. Co.

19 (Title) GO SIT DOWN Intermezzo (Arensky) 1¼ Min.

Pi^{sto}
f

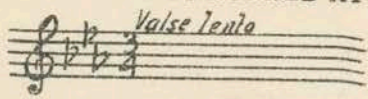
copyr 1915 by Carl Fischer.

20 (Action) AT TAXI STAND Dromedary (Hagen) 1¾ Min.

Mod^{to}

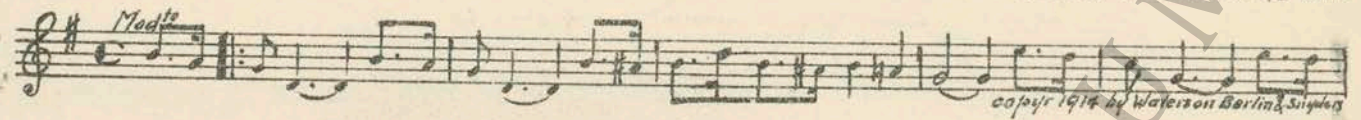
copyr 1925 by E.B. Marks.

21 (Action) MADGE MEETS RONALD AT ENTRANCE Repeat Theme No. 13 1 1/4 Min

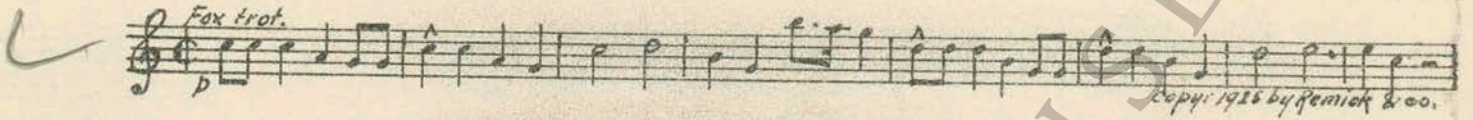


22 (Title) YOU THINK I'M AN AWFUL RUBE He's a Devil in His Own Home Town (Berlin) 1/2 Min.

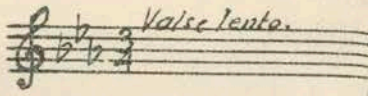
look up in pop.



23 (Action) FLASH-BACK TO CAFE — DANCING Don't Bring Lulu (Henderson) 1 1/4 Min.



24 (Action) MADGE AND RONALD IN HALLWAY Repeat Theme No. 13 2 3/4 Min.



25 (Title) IT WAS SEVEN A. M. Florida (Greer) 1 Min.

jazz

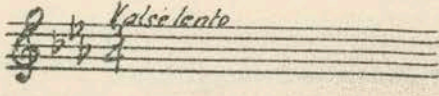


26 (Title) FOLLOW THAT ROLLS Moto Perpetuo (Weiss) 3/4 Min.

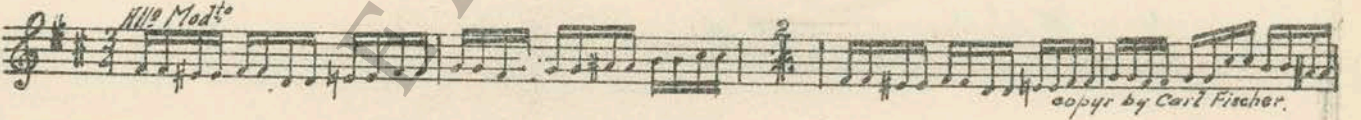


NOTE: Catch fall from auto.

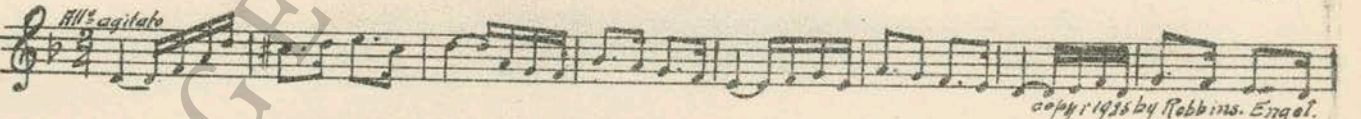
27 (Title) TWO-THIRTY P. M. Repeat Theme No. 13 1 1/4 Min.



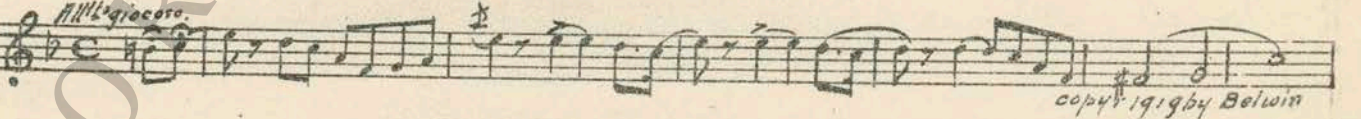
28 (Action) INSERT — NEWSPAPER Unfinished Symphony (Schubert) 2 1/4 Min.



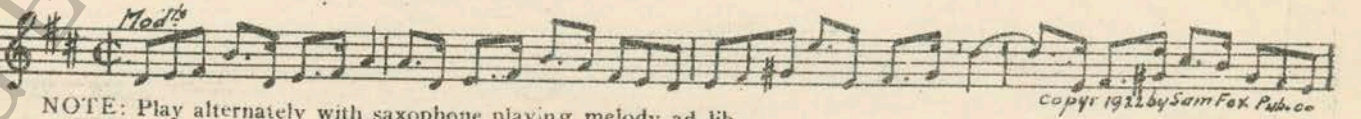
29 (Title) WHO WERE THOSE FELLOWS Minor Agitato (Berge) 1 1/4 Min.



30 (Title) THE LINE UP AT HEADQUARTERS Flirty-Flirts (Levy) 2 1/4 Min.



31 (Action) MADGE AT DOOR Nola (Arndt) 2 1/2 Min.



NOTE: Play alternately with saxophone playing melody ad lib.

32 (Title) I'VE JOINED THE FAMILY Cantilena (Goltermann) 3 1/2 Min.



33 (Action) MR. WORKMAN AT DESK Souvenir d'Amour (Conte) 3/4 Min.

Musical notation for item 33. Includes tempo marking *Mod^{to}* and dynamic *p*. Copyright notice: *copyr 1924 by G. Schirmer.*

34 (Action) RONALD ENTERS ROOM L'Encore (Herbert) 1 1/4 Min.

Musical notation for item 34. Includes tempo marking *Mod^{to}* and dynamic *p*. Copyright notice: *copyr 1910 by M. Witmark & Sons*

35 (Title) THIS IS ONE OF THE COMMODORE TELEPHONE OPERATORS Pleading Love Theme (Bradford) 2 1/4 Min.

Musical notation for item 35. Includes tempo marking *And^{te}* and dynamic *p*. Copyright notice: *copyr 1924 by Belwin*

36 (Action) JIMMY REMOVING JEWELS FROM PIANO ... Incid. Symphony No. 15 (Thomas) 1 Min.

Musical notation for item 36. Includes tempo marking *And^{te} con moto* and dynamic *p*. Copyright notice: *copyr 1923 by Photo play music co*

37 (Title) YOU DIRTY LITTLE SNEAK An Argument (Breil) 1 1/4 Min.

Musical notation for item 37. Includes tempo marking *Rit^{to} quickly* and dynamic *mf*. Copyright notice: *copyr 1924 by Sonnet music*

NOTE: Start at second strain—catch two pistol shots.

38 (Title) JOHN BENTLEY HAD CHANGED Repeat No. 5 "Sweet Genevieve" 2 1/2 Min.

Musical notation for item 38. Includes tempo marking *Slowly*. Copyright notice: *copyr 1924 by Sonnet music*

39 (Action) HE SEES OLD SWEETHEART She May Have Seen Better Days "Old Timers" (Lake) 1/2 Min.

Musical notation for item 39. Includes tempo marking *Waltz* and dynamic *p*. Copyright notice: *copyr by Carl Fischer*

NOTE: Play a la burlesque.

40 (Title) WHERE THERE IS LOVE Repeat Theme No. 13 1 Min.

Musical notation for item 40. Includes tempo marking *Waltz lento* and dynamic *p*.

41 (Action) FLASH-BACK TO OLD FOLKS Stephanie Gavotte (Czibulka) 3/4 Min.

Musical notation for item 41. Includes tempo marking *Mod^{to}* and dynamic *p*. Copyright notice: *copyr 1924 by Carl Fischer*

42 (Action) FATHER PICKS UP TELEPHONE My Best Girl (Donaldson) 3/4 Min.

Musical notation for item 42. Includes tempo marking *Mod^{to}* and dynamic *p*. Copyright notice: *copyr 1924 by Jerome Kern*

43 (Action) MADGE AND RONALD ENTER Somebody (Little) 1 Min.

Musical notation for item 43. Includes tempo marking *All^o giusto* and dynamic *p*. Copyright notice: *copyr 1919 by Maurice Strakosck music*

NOTE: Play "PP" until Title: "I Know Why."

44 (Title) TAKE HER OUT AND BUY HER Repeat Theme No. 13 3/4 Min.

THE END

Country of Origin U. S. A.

Complete Orchestrations and single parts of all compositions contained herein can be purchased from CAMEO MUSIC SERVICE CORPORATION, 112-118 West 44th Street, New York City

95:2143:1