

M. J. MINTZ (PATENT)  
JUN 9, 1922.

ADOLPH ZUKOR and JESSE L. LASKY

present

AN ALLAN DWAN PRODUCTION  
"NIGHT LIFE OF NEW YORK"

with  
Rod La Rocque, Dorothy Gish, Ernest Torrence  
and George Hackathorne

By Edgar Selwyn

Screen play by Paul Schofield

Music compiled by James C. Bradford

Footage 6998 feet



A Paramount Picture

- 1 AT SCREENING ..... There's a Broken Heart for Every Light on Broadway ..... ¾ Min.

*Mod<sup>to</sup>*  
  
 copyright 1925 by Leo Feist

NOTE: Play very spirited.

- 2 (Title) NINE A. M. .... Clematis (Tonning) ..... 1¼ Min.

*Mod<sup>to</sup>*  
  
 copyright 1918 by Balwin.

- 3 (Action) BUTLER ENTERS BEDROOM ..... Sleep (Lebieg) ..... 1 Min.

*Mod<sup>to</sup>*  
  
 copyright 1922 by Herman Clay Co.

NOTE: Play very lazily.

- 4 (Action) RONALD SITS ON SOFA WITH FATHER .... Fleurette d'Amour (Fletcher) ..... 1¾ Min.

*All<sup>to</sup>*  
  
 copyright 1922 by Hawkes

- 5 (Title) AS RONALD KNEW ..... Sweet Genevieve (Tucker) ..... 1¾ Min.

*Slowly*  
  
 copyright 1921 by Richmond Robbins

- 6 (Title) ONE-THIRTY P. M. .... Thrills (Sanders) ..... 1¼ Min.

*Lively*  
  
 copyright 1926 by Sanders Co.

- 7 (Action) RONALD STOPS CAR ..... The 19th Hole (Wenrich) ..... ¾ Min.

*Mod<sup>to</sup>*  
  
 copyright 1922 by Leo Feist.

- 8 (Title) TWO-THIRTY P. M. .... Valse Charmante (Chenoweth) ..... 1¼ Min.

*Valse expresso*  
  
 copyright 1926 by Carl Fischer.

- 9 (Title) FOUR-THIRTY P. M. .... Bluette (Aitken) ..... ¾ Min.

*All<sup>to</sup>*

10 (Title) RONALD IMAGINED NEW YORK ..... Sidewalks of New York "Old Timers" (Lake) ..... 2½ Min

*Valse.*  
A single line of musical notation in 3/4 time, starting with a treble clef and a key signature of one flat. The melody is a simple waltz.  
NOTE: Start with "Sidewalks of New York."  
copyr by Carl Fischer.

11 (Title) HELLO SWEETIE ..... My Sweetie's Sweeter Than That (Fiorito) ..... 1 Min.

*Mod.<sup>o</sup>*  
A single line of musical notation in 2/4 time, starting with a treble clef and a key signature of one flat. The melody is a moderate march.  
copyr 1923 by Leo Forst.

12 (Title) GET ME BENTLEY AND COMPANY ..... A Little Dance (Beaumont) ..... 3½ Min.

*Gavotte*  
A single line of musical notation in 3/4 time, starting with a treble clef and a key signature of one flat. The melody is a light, rhythmic dance.  
copyr 1925 by G. Schirmer

13 (Action) RONALD SPEAKS TO MADGE ..... THEME: A Kiss From You (Maffay) ..... ¾ Min.

*Valse lento*  
Two lines of musical notation in 3/4 time, starting with a treble clef and a key signature of one flat. The melody is a slow waltz.  
copyr 1925 by Robbins Engel.

14 (Title) AT EIGHT-THIRTY ..... Give My Regards to Broadway (Cohan) ..... 1 Min.

*Marche*  
A single line of musical notation in 2/4 time, starting with a treble clef and a key signature of one flat. The melody is a march.  
copyr by Richmond Robbins.

15 (Title) THEN THREE HOURS ... Oh Mister (Frey) ..... ½ Min.

*All. Mod.<sup>o</sup>*  
A single line of musical notation in 2/4 time, starting with a treble clef and a key signature of one flat. The melody is a moderate piece.  
copyr 1924 by Robbins Engel.

16 (Title) AT ELEVEN-THIRTY SCHOOL LETS OUT ... Valse September (Godin) ..... 1 Min.

*Valse.*  
A single line of musical notation in 3/4 time, starting with a treble clef and a key signature of one flat. The melody is a waltz.  
copyr 1910 by E.B. Marks.

17 (Action) FONTANA AND MASS FINISH DANCE ..... Charleston (Johnson) ..... 1¼ Min.

*Jazz*  
A single line of musical notation in 2/4 time, starting with a treble clef and a key signature of one flat. The melody is a jazz piece.  
copyr 1923 by Harris Im.

18 (Title) AT A FIFTH AVENUE ..... Ogo Pogo (Strong) ..... 4 Min.

*Jazz sva.*  
A single line of musical notation in 2/4 time, starting with a treble clef and a key signature of one flat. The melody is a fast jazz piece.  
copyr 1925 by Sam Fox, Pub. Co.

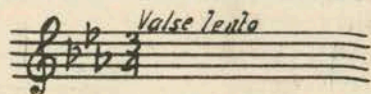
19 (Title) GO SIT DOWN ..... Intermezzo (Arensky) ..... 1¼ Min.

*Pirote*  
A single line of musical notation in 3/4 time, starting with a treble clef and a key signature of one flat. The melody is a piece of music.  
copyr 1915 by Carl Fischer.

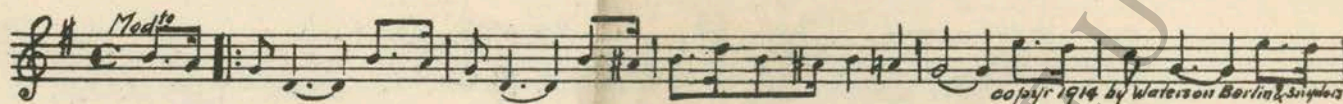
20 (Action) AT TAXI STAND ..... Dromedary (Hagen) ..... 1¾ Min.

*Yodlo*  
A single line of musical notation in 2/4 time, starting with a treble clef and a key signature of one flat. The melody is a piece of music.  
copyr 1926 by E.B. Marks.

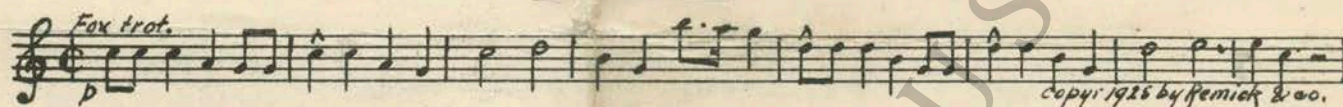
21 (Action) MADGE MEETS RONALD AT ENTRANCE ..... Repeat Theme No. 13 ..... 1 3/4 Min.



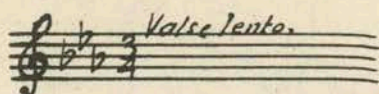
22 (Title) YOU THINK I'M AN AWFUL RUBE ..... He's a Devil in His Own Home Town (Berlin) ..... 1/2 Min.



23 (Action) FLASH-BACK TO CAFE — DANCING ..... Don't Bring Lulu (Henderson) ..... 1 1/4 Min.



24 (Action) MADGE AND RONALD IN HALLWAY ..... Repeat Theme No. 13 ..... 2 3/4 Min.



25 (Title) IT WAS SEVEN A. M. .... Florida (Greer) ..... 1 Min.

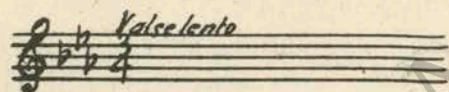


26 (Title) FOLLOW THAT ROLLS ..... Moto Perpetuo (Weiss) ..... 3 1/4 Min.

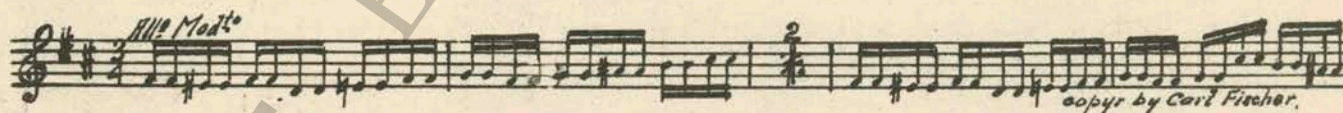


NOTE: Catch fall from auto.

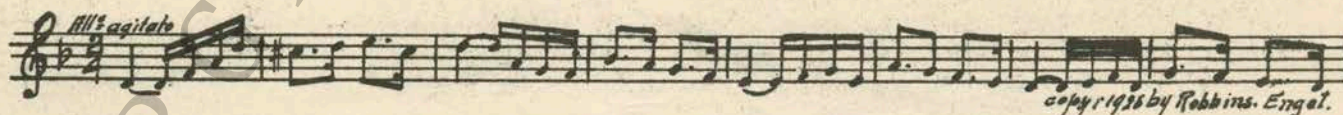
27 (Title) TWO-THIRTY P. M. .... Repeat Theme No. 13 ..... 1 1/4 Min.



28 (Action) INSERT — NEWSPAPER ..... Unfinished Symphony (Schubert) ..... 2 1/4 Min.



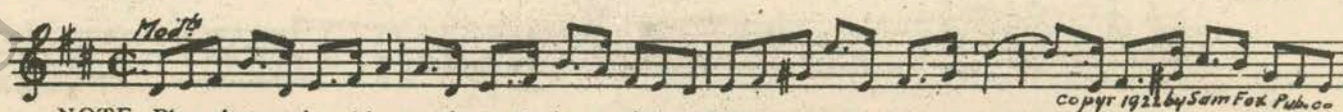
29 (Title) WHO WERE THOSE FELLOWS ..... Minor Agitato (Berge) ..... 1 1/4 Min.



30 (Title) THE LINE UP AT HEADQUARTERS ..... Flirty-Flirts (Levy) ..... 2 1/4 Min.



31 (Action) MADGE AT DOOR ..... Nola (Arndt) ..... 2 1/2 Min.



NOTE: Play alternately with saxophone playing melody ad lib.

32 (Title) I'VE JOINED THE FAMILY ..... Cantilena (Goltermann) ..... 3 1/2 Min.



33 (Action) MR. WORKMAN AT DESK ..... Souvenir d'Amour (Conte) ..... 3¼ Min.

*Mod<sup>to</sup>*  
  
*8va*  
 copyr 1924 by G Schirmer.

34 (Action) RONALD ENTERS ROOM ..... L'Encore (Herbert) ..... 1¼ Min.

*Mod<sup>to</sup>*  
  
 copyr 1910 by M. Witmark & sons

35 (Title) THIS IS ONE OF THE COMMODORE TELEPHONE OPERATORS ..... Pleading Love Theme (Bradford) ..... 2¼ Min.

*And<sup>te</sup>*  
  
 copyr 1924 by Belwin

36 (Action) JIMMY REMOVING JEWELS FROM PIANO ... Incid. Symphony No. 15 (Thomas) ..... 1 Min.

*And<sup>te</sup> con moto*  
  
 copyr 1923 by Photo play music co.

37 (Title) YOU DIRTY LITTLE SNEAK ..... An Argument (Breil) ..... 1¼ Min.

*Rapido punchy*  
  
 copyr 1924 by Sonne music

NOTE: Start at second strain—catch two pistol shots.

38 (Title) JOHN BENTLEY HAD CHANGED ..... Repeat No. 5 "Sweet Genevieve" ..... 2½ Min.

*Slowly*

39 (Action) HE SEES OLD SWEETHEART ..... She May Have Seen Better Days "Old Timers" (Lake) ..... ½ Min.

*Valse*  
  
 copyr by Carl Fischer.

NOTE: Play a la burlesque.

40 (Title) WHERE THERE IS LOVE ..... Repeat Theme No. 13 ..... 1 Min.

*Valse lenta*

41 (Action) FLASH-BACK TO OLD FOLKS ..... Stephanie Gavotte (Czibulka) ..... ¾ Min.

*Mod<sup>to</sup>*  
  
 copyr 1924 by Carl Fischer.

42 (Action) FATHER PICKS UP TELEPHONE ..... My Best Girl (Donaldson) ..... ¾ Min.

*Mod<sup>to</sup>*  
  
 copyr 1927 by Jerome Kern

43 (Action) MADGE AND RONALD ENTER ..... Somebody (Little) ..... 1 Min.

*All<sup>o</sup> giusto.*  
  
 copyr 1919 by Maurice Strakosky

NOTE: Play "PP" until Title: "I Know Why."

44 (Title) TAKE HER OUT AND BUY HER ..... Repeat Theme No. 13 ..... ¾ Min.

THE END

Country of Origin U. S. A.