

april 19/28



M. J. MINTZ (PATENT)
JULY 21, 1923.

Richard A. Rowland
presents

RICHARD BARTHELMESS

"THE NOOSE"

By Willard Mack and H. H. Van Loan
A John Francis Dillon Production
Produced by Henry Hobart
Compiled by James C. Bradford
A First National Picture

One theme

MUSEUM

1 AT SCREENING Vanitza (Perpignan) 3 Min.

Allegro
Ecstasy - Zerkowich

Manus Music Co

2 (Title) THE CAPITOL OF Down By the Winegar Woiks (Donovan) 1 3/4 Min.

Valse

Copyright 1925 Shapiro, Bernstein & Co

3 (Action) NICKIE HURRIEDLY ENTERS Uneasiness (Mendelssohn) 1 Min.

And^{te} con moto
Winkler - Bendis

Copyright 1926 Cinemusik Service

4 (Title) I'M GONNA QUIT Try and Get a Kiss From Fifi (Conrad) 1/2 Min.

Moderate

Copyright 1927 Irving Berlin

5 (Action) GIRLS FINISH DANCE Intermezzo Perpetual (Lowitz) 1 Min.

Con moto
Adapted

Copyright 1927 G. Schirmer

6 (Action) START REHEARSAL Repeat No. 4 "Try and Get a Kiss From Fifi" 1 Min.

Moderate

Did you mean it

7 (Action) DOT AND NICKIE ALONE LOVE THEME: Night Club Rose (Friedland) 3 Min.

Espressivo
Theme

Copyright 1927 Leo Feist

NOTE: Play very sweetly and expressivo.

Don't forget

8 (Title) A SWELL DAME Tinkle Tot (Murphy) 1½ Min.

Musical notation for 'A SWELL DAME' with tempo marking 'Mod^{to}' and handwritten note 'Drop Skip'. Copyright: 1926 Robbins Music Co.

9 (Title) I'M NOT MAKING A PLAY FOR HIM Repeat Love Theme No. 7 1 Min.

Handwritten 'Theme' in red ink and musical notation for 'I'M NOT MAKING A PLAY FOR HIM' with tempo marking 'Espressivo'.

10 (Title) YOU PUT A LOT OF IDEAS IN MY HEAD, PHYLIS Summer Nights (Roberts) 1 Min.

Musical notation for 'YOU PUT A LOT OF IDEAS IN MY HEAD, PHYLIS' with tempo marking 'And^{te}'. Copyright: 1915 Sam Fox.

11 (Action) GIRLS DANCE INTO ROOM My Blue Heaven (Donaldson) ½ Min.

Musical notation for 'GIRLS DANCE INTO ROOM' with tempo marking 'Mod^{to}' and handwritten note 'You Can Tell the Amplitude'. Copyright: 1927 Leo Feist.

12 (Title) I WANT TO HAVE A TALK WITH YOU Rivalite (Snock) 3¼ Min.

Musical notation for 'I WANT TO HAVE A TALK WITH YOU' with tempo marking 'Allegro con fuoco' and handwritten note 'agitato!'. Copyright: Manus Music Co.

13 (Action) NICKIE LOOKS THROUGH HOLE IN WALL, When Shadows Creep (Gay) ¾ Min.

Musical notation for 'NICKIE LOOKS THROUGH HOLE IN WALL, When Shadows Creep' with tempo marking 'Mod^{to}' and handwritten note 'The And My Shadow'. Copyright: 1927 Leo Feist.

14 (Action) NICKIE TAKES REVOLVER FROM DRAWER, Repeat Love Theme No. 7 1½ Min.

Handwritten 'Theme' in red ink and musical notation for 'NICKIE TAKES REVOLVER FROM DRAWER' with tempo marking 'Espressivo'.

15 (Title) SKELLON'S CAFE Hunkatin (Levy) ½ Min.

Musical notation for 'SKELLON'S CAFE' with tempo marking 'One Step'. Copyright: 1918 Belwin Inc.

16 (Action) BUCK APPEARS AT DOOR Evil Intentions (Kempinski) 2¼ Min.

Musical notation for 'BUCK APPEARS AT DOOR' with tempo marking 'Mod^{to}' and handwritten note 'Crashy Sp'. Copyright: 1927 Irving Berlin.

17 (Title) YOU'RE A THIEVING LIAR L. Abime (Franceschi) 1 Min.

Musical notation for 'YOU'RE A THIEVING LIAR' with tempo marking 'Allegro vivace' and handwritten note 'Luring'. Copyright: Sonnemann Music Co.

18 (Action) FLASH TO BUCK'S JOINT Diabolical Allegro (Bergunker) 1 Min.

Musical notation for 'FLASH TO BUCK'S JOINT' with tempo marking 'Allegro' and handwritten note 'Dram. Suspense'. Copyright: 1927 G. Schirmer.

19 (Title) WHAT'S THE ACE IN THE HOLE? The Captive (Savino) 2¼ Min.

Musical notation for 'WHAT'S THE ACE IN THE HOLE?' with tempo marking 'Grave e sostenuto' and handwritten note 'Dram. Tense, b'. Copyright: 1927 Robbins Music Co.

20 (Action) STAGE MANAGER APPEARS IN SPANISH COSTUME In a Little Spanish Town (Wayne) 1/2 Min.

Mod^{to}

 Copyr. 1926 Leo Feist

21 (Action) BUCK STOPS DOT ON WAY FROM ROOM... Tragic Andante (Savino) 2 1/4 Min

Andte

 Copyr. 1923 G. Schirmer

22 (Action) NICKIE LOOKS THROUGH HOLE IN WALL AGAIN Calling (Golden) 1 Min.

Mod^{to}

 Copyr. 1927 Robbins Music Corp

23 (Title) NOTE: Play very expressive—“PP” MAYBE YOU CAN'T TELL 'EM, BUT I CAN... Andante from Fifth Symphony (Tschaikowsky) 5 1/2 Min.

Andte

24 (Title) NOTE: Work up to big climax, producing pistol shots at the same time as Buck falls. WHY'D YOU KILL HIM, KID? Love Tragedy (Savino) 2 1/2 Min.

Andte

 Copyr. 1924 Robbins Music Corp.

25 (Action) PRISON CORRIECK Berceuse (Jarnfelt) 3 Min.

Lento

 Copyr. 1910 Carl Fischer

25 (Action) NOTE: Play in 4/8 Lento con sordini “PP” strings only. GOVERNOR AT DESK Romance In F (Tschaikowsky) 2 1/4 Min.

Andte cantabile

 Copyr. 1911 G. Schirmer

27 (Action) CHASE ENTERS ROOM Remorse (Lowitz) 3 1/4 Min.

Lento

 Copyr. 1927 G. Schirmer

23 (Title) BRING THE ELKINS BOY OVER Chant de la Mort (Kempinski) 1 1/2 Min.

Adagio

 Copyr. 1927 Irving Berlin

23 (Action) NICKIE ENTERS ROOM MOTHER THEME: Chanson Algerian (Bradford) 3 1/4 Min.

Andte

Lento

 Copyr. 1926 Sam Fox

30 (Title) NICKIE, SUPPOSE I WAS YOUR MOTHER Film Theme No. 19 (Krzyzanowski-Roberts) 2 1/2 Min.

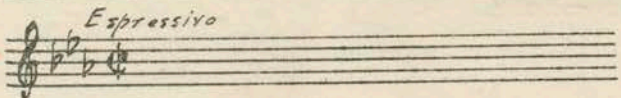
Lento

 Copyr. 1924 Carl Fischer

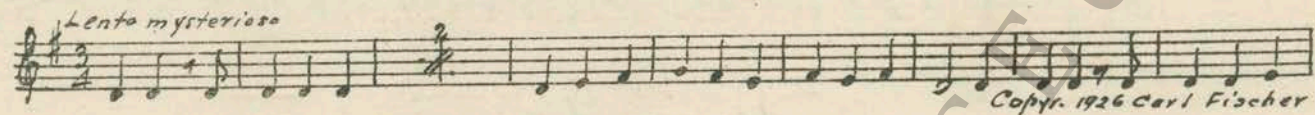
NOTE: Play “PP” con sordini—strings only.

31 (Action) NICKIE BACK IN CELL Repeat Love Theme No. 7 3¼ Min.

Theme

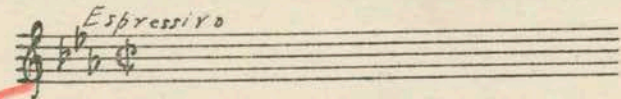


32 (Action) GOVERNOR AT DOOR OF WIFE'S BOUDOIR. Valse Triste (Sibelius) 2½ Min.



33 (Action) DOT JOINS FRIENDS IN DRESSING ROOM... Repeat Love Theme No. 7 1 Min.

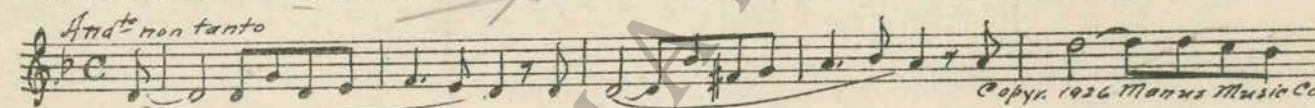
Theme



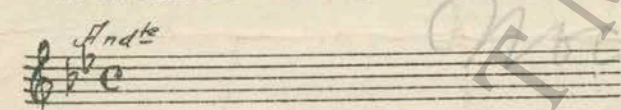
34 (Action) FLASH TO NICKIE AND CHAPLIN Andante Pathetique No. 1 (Schumann) 4¼ Min.



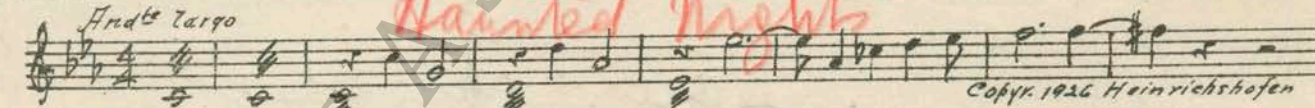
35 (Action) GUARD WITH WARRANT APPEARS AT CELL DOOR Lamento from "Pique Dame" (Tschaikowsky) 4¼ Min.



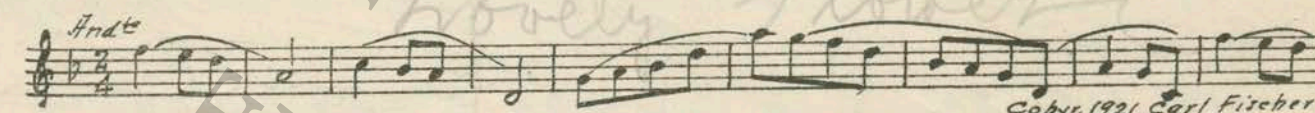
36 (Action) MOTHER WALKS TOWARD TELEPHONE IN APPARENT STUPOR Repeat Mother Theme No. 29 1¾ Min.



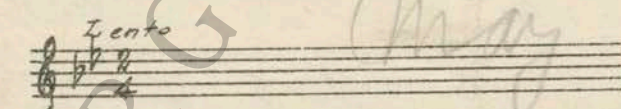
37 (Title) HE WAS ON THE SCAFFOLD In the Night (Noack) ½ Min.



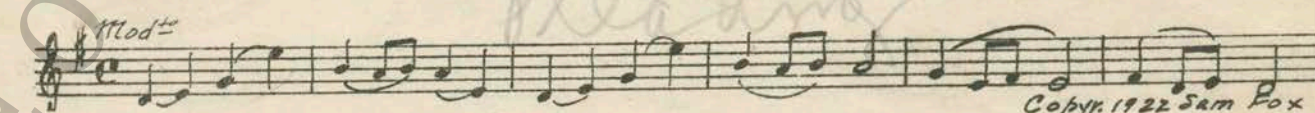
38 (Title) THERE'S A GIRL Coeur Brise (Gillet) 1½ Min.



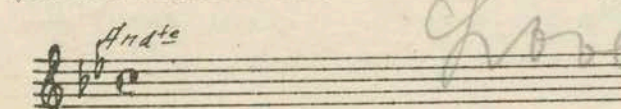
39 (Action) DOT ENTERS ROOM Repeat No. 25 "Berceuse" 2¼ Min.



40 (Action) NICKIE ENTERS ROOM The Confession (Zamecnik) 1¾ Min.



41 (Title) YOU MUST PARDON HIM NOW Repeat Mother Theme No. 29 2½ Min.



THE END

Printed in U. S. A.

Complete orchestrations and single piano parts of each separate number contained hereon, can be purchased from CAMEO MUSIC SERVICE CORPORATION, 315-317 WEST 47TH STREET, NEW YORK CITY.

95:2150:2