

Thematic Music


Cue Sheet

M. J. MINTZ (PATENT)
JULY 31, 1923.



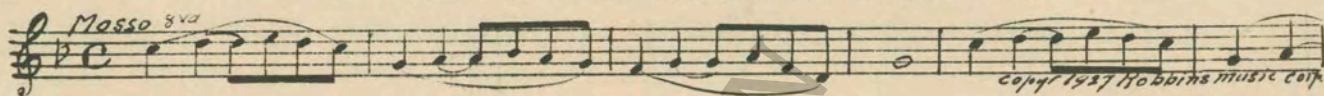
ADOLPH ZUKOR and JESSE L. LASKY
 present
FLORENCE VIDOR

in
“ONE WOMAN TO ANOTHER”

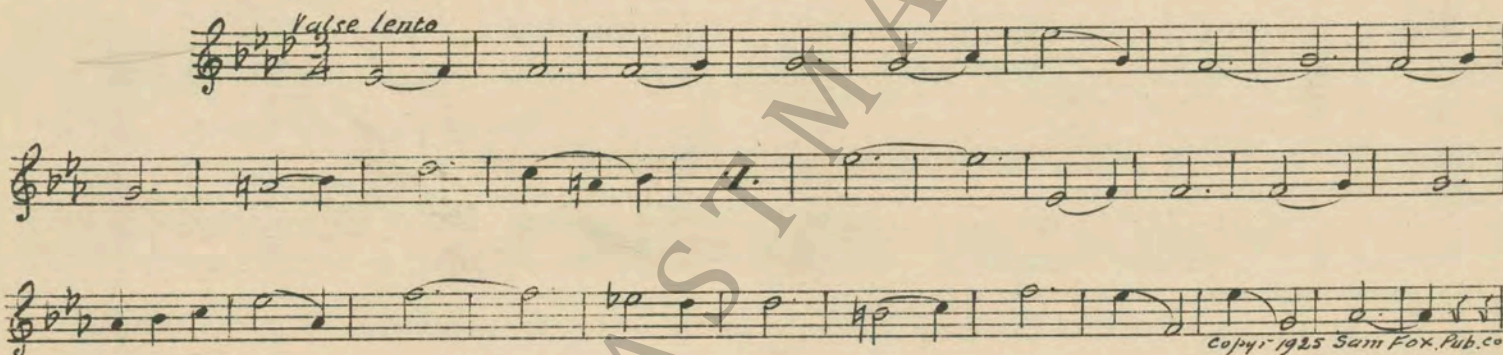
A Frank Tuttle Production
 From the play by Frances Nordstrom
 Screen play by James L. Campbell
 B. P. Schulberg, Associate Producer
 Compiled by James C. Bradford
 Footage 4551 feet

A Paramount Picture

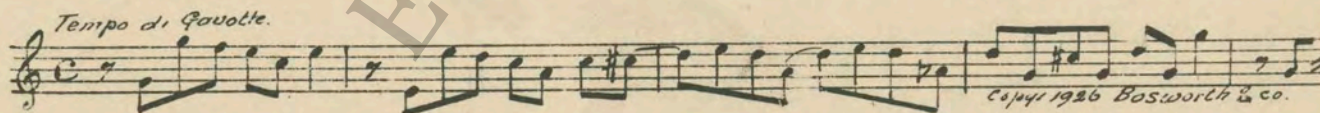
- 1 AT SCREENINGPrelude (Symphonic Love Theme) (Savino)1 Min.



- 2 (Action) FADE-IN HANDS ON TYPEWRITERTHEME: Magic Love (Bradford)1¼ Min.



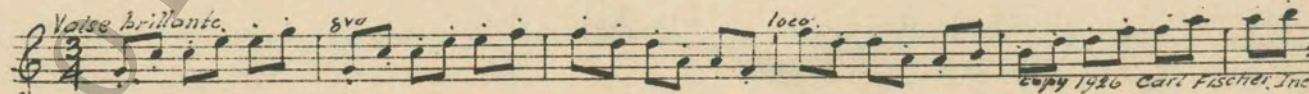
- 3 (Action) MINISTER AND CHILDREN APPEARThe Penguins Picnic (Carver)1½ Min.



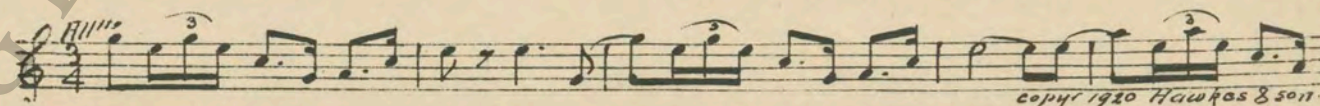
- 4 (Title) RITA, NO ONE IN OUR FAMILYReverie Poetique (Baron)1 Min.



- 5 (Action) BRUCE ENTERSOn a Woodland Glade (Ray)1 Min.



- 6 (Title) SHE'S ALWAYS THIRSTYJoytime (Howgill)1½ Min.



7 (Action) GIRL STRIKES BOY IN STOMACH.....Symphonic Incidentals No. 5 (Marquardt)¾ Min.

Musical notation for item 7, marked *Presto*. Copyright 1927 Music Buyers Corp.

8 (Title) BEFORE LONGFELLOWSmile (Heywood)½ Min.

Musical notation for item 8, marked *Mod^{to}*. Copyright 1927 Robbins Music Corp.

9 (Action) BRUCE STOPS MACHINERepeat Theme No. 22 Min.
NOTE: Play on phonograph.

Musical notation for item 9, marked *Valse lente*.

10 (Action) LITTLE GIRL APPEARSMoto Perpetuo (Byng)2¼ Min.

Musical notation for item 10, marked *All^o*. Copyright 1926 New Pros. Son.

11 (Title) BUT THE GREAT BIG BOY SCOUTAlysia (Frey)¾ Min.

Musical notation for item 11, marked *Moderately Slow*. Copyright 1926 Robbins Music Corp.

12 (Title) FOR A WEEKLove Bound (Rupp)1¼ Min.

Musical notation for item 12, marked *Mod^{to}*. Copyright 1926 Sam Fox Pub. Co.

13 (Title) COME ON YOU TWOAllegretto (Symphonic Love Theme) (Savino)¾ Min.

Musical notation for item 13, marked *All^o giocoso*. Copyright 1927 Robbins Music Corp.

14 (Title) SO FOR TWENTY-ONE FEVERISH DAYS....Celebrated Canzonetta (Mendelssohn)½ Min.

Musical notation for item 14, marked *All^o*. Copyright 1926 G. Schirmer, Inc.

15 (Action) BRUCE AND CLAIR ON GOLF LINKS.....Ain't We Got Fun (Whiting)½ Min.

Musical notation for item 15, marked *Mod^{to}*. Copyright 1921 J.H. Kentick Co.

16 (Action) INSERT—SCARLET FEVER CARDRepeat Theme No. 2¾ Min.

Musical notation for item 16, marked *Valse lente*.

17 (Title) I'M AFRAID NOT FOR A WHILEScherzando Hurry (Frey)1¼ Min.

Musical notation for item 17, marked *Scherzando*. Copyright 1925 Robbins Music Corp.

18 (Action) OLIVE APPEARSQuelques Fleurs (Baron)1 Min.

Musical notation for item 18, marked *Tempo di Valse*. Copyright 1925 Belwin Inc.

19 (Title) JOHN WAS JUST OUT A Little Girl—A Little Boy—A Little Moon (Warren).....2¼ Min.

Tempo di valse.

Musical score for 'John Was Just Out' in 3/4 time, key of B-flat major. The score consists of five staves of music. The first staff begins with a treble clef and a key signature of one flat. The music features a mix of eighth and sixteenth notes, with some measures containing rests. The piece concludes with a double bar line.

copyr 1927 Shapiro Bernstein & Co. Inc.

20 (Title) NO ONE DID SHOW UP BUT THE MOON....Where the Wild, Wild Flowers Grow (Woods).....2½ Min.

Mod^{to}

Musical score for 'No One Did Show Up But the Moon' in 2/4 time, key of B-flat major. The score consists of five staves of music. The first staff begins with a treble clef and a key signature of one flat. The music features a mix of eighth and sixteenth notes, with some measures containing rests. The piece concludes with a double bar line.

copyr 1927 Irving Berlin Inc.

21 (Action) MOTHER AND FRIENDS ARRIVE ON THE SCENE Chatter (Kahn)1¼ Min.

All^o

8va bassa

Musical score for 'Mother and Friends Arrive on the Scene' in 2/4 time, key of B-flat major. The score consists of one staff of music. The piece begins with a treble clef and a key signature of one flat. The music features a mix of eighth and sixteenth notes, with some measures containing rests. The piece concludes with a double bar line.

copyr 1926 Sonnemann music co

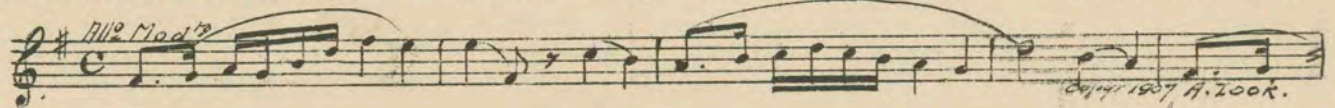
22 (Title) AT THE SUMMER RESORT Cupid's Frolic (Miles)2 Min.

Mod^{to}

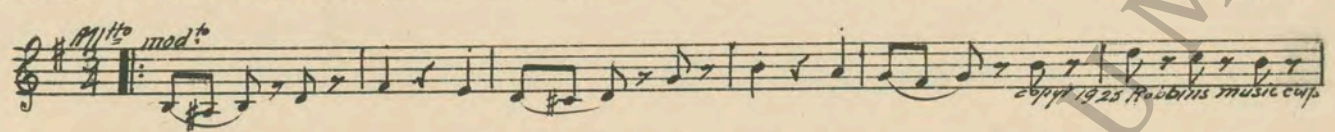
Musical score for 'At the Summer Resort' in 2/8 time, key of B-flat major. The score consists of one staff of music. The piece begins with a treble clef and a key signature of one flat. The music features a mix of eighth and sixteenth notes, with some measures containing rests. The piece concludes with a double bar line.

copyr 1916 Sam Fox Pub Co.

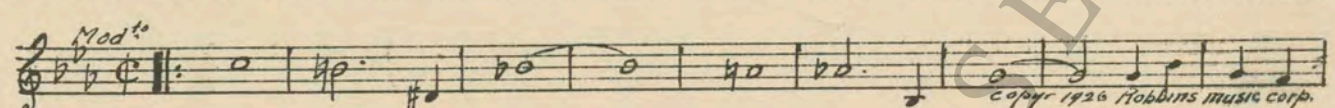
23 (Title) IT TOOK ONLY ONE WOMAN TO SCALP... Promenade Amoureuse (Fauchey) 1 3/4 Min.



24 (Action) SHE BREAKS GLASS IN DOOR Second Misterioso a la Valse (Savino) 2 1/4 Min.



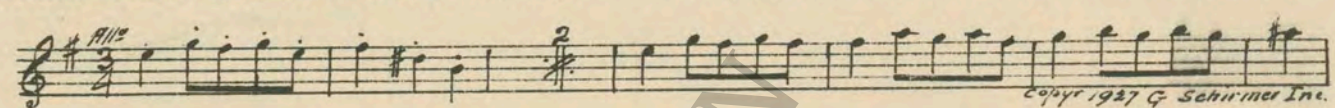
25 (Action) RITA RECLINES ON DIVAN Who Do You Love? (Frey) 1 Min.



26 (Action) BRUCE ENTERS Misterioso alla Valse (Savino) 2 Min.



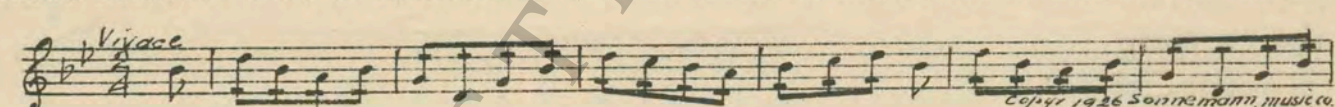
27 (Action) INSERT—SLEEP WALKING SCENE Diabolical Allegro (Bergunker) 2 Min.



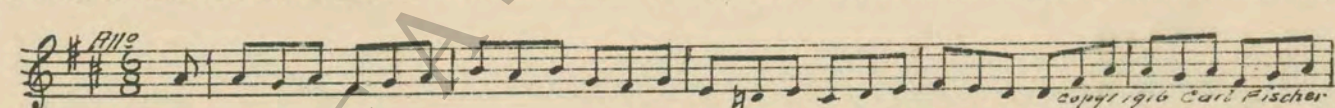
28 (Action) MINISTER APPEARS AT DOOR Cupid's Conquest (Kahn) 1 3/4 Min.



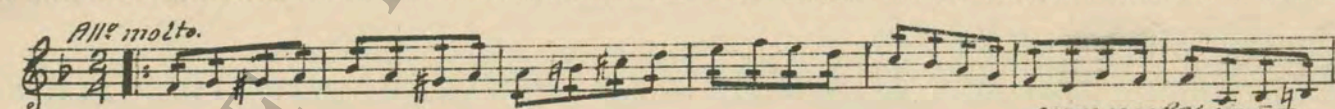
29 (Action) BRUCE SEES RITA BACK OF CUSHION..... Elopement (Carrozini) 3 Min.



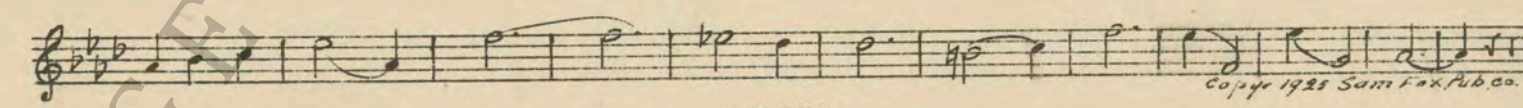
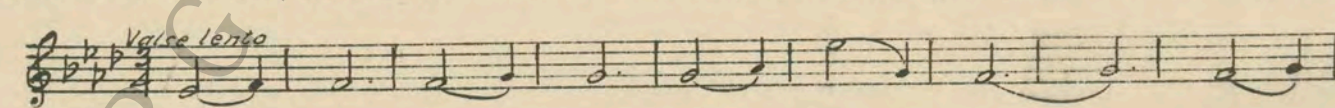
30 (Title) IS THIS A GENTLEMAN'S HOME Gigue (Gretry-Mottl) 2 Min.



31 (Title) WE'RE NOT MARRIED Perpetuum Mobile (Rapee) 1 Min.



32 (Action) RITA APPEARS FROM REAR SEAT THEME: Magic Love (Bradford) 1 1/4 Min.



THE END

Country of Origin, U. S. A.

Complete orchestrations and single piano parts of each separate number contained hereon, can be purchased from CAMEO MUSIC SERVICE CORPORATION, 315-317 WEST 47TH STREET, NEW YORK CITY.

95:2170:32