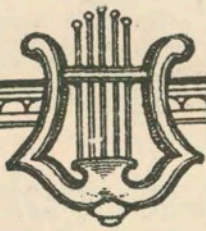
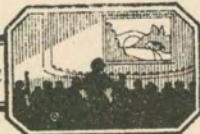


122



Thematic Music



Cue Sheet

M. J. MINTZ (PATENT)
JULY 31, 1923

M. C. Levee

PRESENTS

"One Year To Live"

A FIRST NATIONAL PICTURE

MUSIC COMPILED BY

JAMES C. BRADFORD

Complete Orchestrations and single parts or all compositions contained herein can be purchased from CAMEO
MUSIC SERVICE CORPORATION, 112-118 West 44th Street, New York City

MADE IN U. S. A.

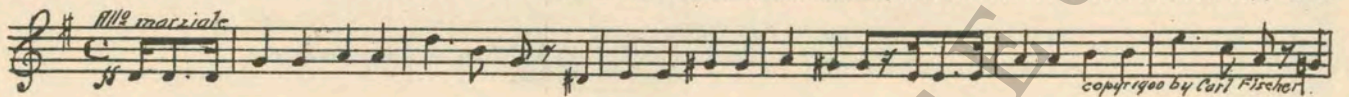


M. J. MINTZ (PATENT)
JULY 31, 1923.

"ONE YEAR TO LIVE"

Music compiled by James C. Bradford

- 1 AT SCREENING La Belle France (Laurendeau) 1¼ Min.



- 2 (Title) YEARS OF SUFFERING Falling Rose Leaves (Sanders) 2 Min.



- 3 (Action) DR. AT IRON GATE Poem (Fibich) 3¼ Min.



- 4 (Title) AT LEAST YOU'LL LET ME DRIVE YOU.... Marionette (Byford) 1¼ Min.

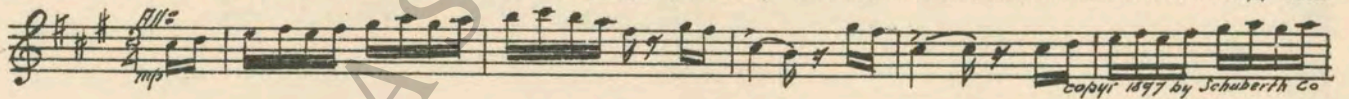


- 5 (Action) BELL TOLLING IN TOWER Angelus "Scenes Pittoresque" (Massenet) 1 Min.

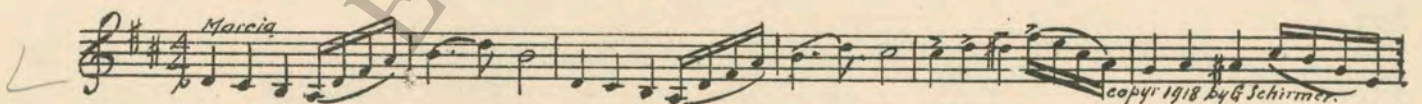


NOTE: Angelus tolling ad lib.

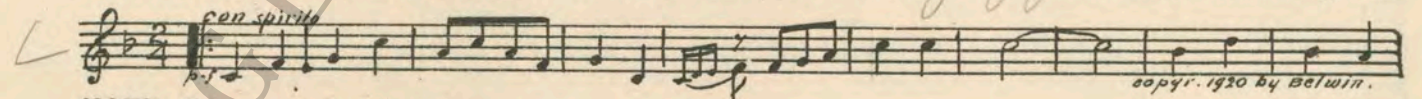
- 6 (Title) THE DRESSING ROOM OF "LOLETTE" Badinage (Herbert) 2¾ Min.



- 7 (Title) CAPTAIN TOM KENDRICK A Frivolous Patrol (Goublier) 1 Min.

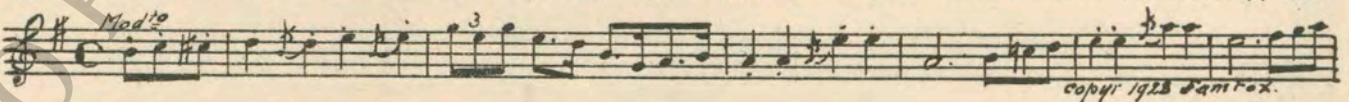


- 8 (Action) LEADER STARTS ORCHESTRA A La Parea (Verdin) 2¾ Min.

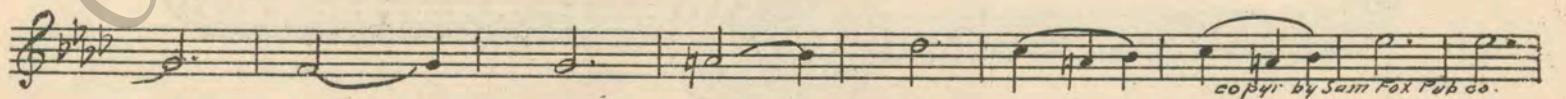


NOTE: Take tempo from screen.

- 9 (Action) TOM IN DRESSING ROOM WITH ELISE Water Sprites (van Norman) 1¼ Min.



- 10 (Action) DARK STREET SCENE THEME: Magic Love (Bradford) 1½ Min.



No other one But you - Lowner

11 (Title) THE OUTSTANDING NOVELTY..... Ninette (Christine)3 Min.

Handwritten: *Jazz*
Musical notation for "THE OUTSTANDING NOVELTY" (Polka, 2/4 time, key of D major).
NOTE: Play "PP" for dressing room scenes.
copyright 1921 by E. B. Marks music co

12 (Action) TOM LEAVES DRESSING..... L'Amour (Christine)2¼ Min.

Handwritten: *Jazz*
Musical notation for "TOM LEAVES DRESSING" (Two step, 2/4 time, key of D major).
NOTE: Play "PP" for dressing room scenes.
copyright 1913 by E. B. Marks music co

13 (Action) TOM AND ELISE START TO DANCE..... La Belle France (Tobani).....¾ Min.

Handwritten: *Jazz*
Musical notation for "TOM AND ELISE START TO DANCE" (Valse, 3/4 time, key of D major).
copyright 1904 by Carl Fischer

14 (Action) LOLETTE ENTERS AND SEES ELISE AND TOM Dram. Suspense (O'Hare).....1 Min.

Handwritten: *Serious*
Musical notation for "LOLETTE ENTERS AND SEES ELISE AND TOM" (All^o appassionato, 2/4 time, key of D major).
copyright 1919 by O. Ditson

15 (Title) TOWARD MIDNIGHT Marietta (Sterny)1¼ Min.

Handwritten: *Jazz*
Musical notation for "TOWARD MIDNIGHT" (Polka, 2/4 time, key of D major).
NOTE: Play "PP" for dressing room scenes.
copyright 1911 by E. B. Marks

16 (Action) ELISE PULLS WATCH..... Mercedes (Miro)1¼ Min.

Handwritten: *Polka dressy*
Musical notation for "ELISE PULLS WATCH" (Valse espagnole, 3/4 time, key of D major).
copyright 1911 by G. Schirmer

17 (Action) FINISHES DANCE A La Mode (Rosey).....1¼ Min.

Handwritten: *Jazz*
Musical notation for "FINISHES DANCE" (All^o vivo, 2/4 time, key of D major).
copyright 1914 by Belwin

18 (Title) THIS IS THE SECOND TIME..... Repeat No. 14 "Dram. Suspense".....¾ Min.

Handwritten: *All^o appassionato*
Musical notation for "THIS IS THE SECOND TIME" (All^o appassionato, 2/4 time, key of D major).

19 (Action) EXTERIOR-TAXI AT GATE..... Repeat Theme No. 10.....3 Min.

Musical notation for "EXTERIOR-TAXI AT GATE" (2/4 time, key of D major).

20 (Action) DR WALKS FROM DOORWAY..... Andante Misterioso (Lake).....1 Min.

Handwritten: *And^{te}*
Musical notation for "DR WALKS FROM DOORWAY" (Andante misterioso, 2/4 time, key of D major).
copyright 1914 by Carl Fischer

21 (Title) A FEW WEEKS LATER..... Clair de Lune (Thome).....1½ Min.

Handwritten: *And^{te}*
Musical notation for "A FEW WEEKS LATER" (Clair de Lune, 3/4 time, key of D major).
copyright 1906 by Carl Fischer

22 (Action) LOLETTE ENTERS Repeat No. 14 "Dram. Suspense".....2 Min.

Handwritten: *All^o appassionato*
Musical notation for "LOLETTE ENTERS" (All^o appassionato, 2/4 time, key of D major).

23 (Action) STREET SCENE Andante Cantabile (Tschaikowsky).....4½ Min.

Handwritten: *And^{te}*
Musical notation for "STREET SCENE" (Andante cantabile, 2/4 time, key of D major).
copyright 1922 by G. Schirmer

24 (Title) AGAIN I ASK YOU ELISE..... Air de Ballet (Massenet).....1¼ Min.

Handwritten: *All^o*
Musical notation for "AGAIN I ASK YOU ELISE" (Air de ballet, 3/8 time, key of D major).
NOTE: Play 1st movement only, Cello Solo slowly.
copyright 1907 by Carl Fischer

- 25 (Title) NOT HAVING HEARD FROM TOM.....Romance (Rubenstein)2 Min.
And^{te} con moto
 copyright 1914 by G. Schirmer
- 26 (Title) NUT NO APPARENT CHANGE.....Cantilena (Goltermann)1½ Min.
And^{te}
 copyright 1923, by G. Schirmer
- 27 (Title) I ASKED GOD TO HELP ME.....The Omnipotence (Schubert).....1½ Min.
And^{te} religioso
 copyright 1895 by Carl Fischer
- NOTE: Bells tolling ad lib.
- 28 (Action) LOLETTE READING—INSERTDew Drops (Rapee-Axt).....1¼ Min.
All^o
 copyright 1923 by Robbins Engel, Inc.
- 29 (Action) TOM ENTERSChanson sans Paroles (Tschaikowsky).....1½ Min.
All^o
 copyright 1900 by Carl Fischer
- 30 (Action) CAFE—DANCINGLaughing Love (Christine)1½ Min.
Trip step
 copyright 1911 by E. B. Marks
- 31 (Action) DANCERS LEAVE DANCE FLOOR.....Appassionato No. 2 (Axt).....1½ Min.
All^o appassionato
 copyright 1924 by Robbins-Engel
- 32 (Title) GET ME OUT OF HERE.....Tres Moutarde (Macklin).....1 Min.
Tango
 copyright by Ascher
- 33 (Action) DR. SPEAKS TO TOM.....Appassionato (Borch)1¾ Min.
Mod^o
 copyright 1920 by O. Ditson
- 34 (Action) ELISE AND BRUNEL ENTER ROOM.....Andantino in Modo di Canzone (Tschaikowsky).....4¾ Min.
And^{te}
 copyright 1915 by Carl Fischer
- NOTE: Start from Cello Solo.
- 35 (Action) TOM ENTERSDisperazione (Gabriel Marie)2½ Min.
And^{te}
 copyright 1918 by Ricordi
- 36 (Action) ELISE SEES MARTHE.....Melody of Peace (Martin).....2 Min.
And^{te}
 copyright 1920 by Carl Fischer
- 37 (Action) BRUNEL PICKS UP TELEPHONE.....The Woodland Flirt (Ring-Hager).....1 Min.
Mod^o assai
 copyright 1922 Gelpi, Inc.
- 38 (Action) AUTO AT ENTRANCE.....Repeat Theme No. 10.....1½ Min.

THE END

Complete Orchestrations and single parts of all compositions contained herein can be purchased from CAMEO
 MUSIC SERVICE CORPORATION, 112-118 West 44th Street, New York City