

DVII 51

Archie Theatre
April 17

Jules. Weckmeyer



OUR DANCING DAUGHTERS



with
JOAN CRAWFORD

and
John Mack Brown, Nils Asther, Dorothy Sebastian, Anita Page
Directed by HARRY BEAUMONT

A COSMOPOLITAN PRODUCTION

Music Compiled by Ernst Luz

A METRO-GOLDWYN-MAYER PICTURE

Length of Film, 9 Reels—7850 Feet

Maximum Projection Time, 1 Hour 25 Min.

- 1 AT SCREENING Introd. and THEME No. 1 (Luz) 1¼ Min.

And^{te} Maestoso *Mod^{te}*
Copyright 1917 Photo Play Music Co.

- 2 (Action) FEET & SLIPPERS SHOW ON SCREEN Feelin' Good (Ager) ¾ Min.

Mod^{te} *Mod^{te}*
Copyright 1928 Ager, Yellen + Bornstein.

- 3 (Action) END OF DANCING FEET Serenade Galante (Beghon) 2 Min.

All^{ro} *Belwin Inc.*

- 4 (Action) AFTER GIRL DRINKS FROM BOYS' GLASSES Lt. Romantic THEME No. 3 (Luz) 1 Min.

And^{te} Mod^{te} *Copyright 1917 Photo Play Music*

- 5 (Title) MIND YOU AND MOTHER Sirene (Viola) 1¼ Min.

Lento *Copyright 1922 Photo Play Music*

- 6 (Title) DON'T WORRY Untold Secrets (Hauenschild) WHITE ¾ Min.

And^{te} molto mod^{te} *Copyright 1925 Photo Play Music Co.*

- 7 (Action) GIRL'S LEGS ON SCREEN Cupid's Conquest (Kahn) 1½ Min.

All^{ro} *Copyright 1923 Belwin Inc.*

- 8 (Action) MOTHER OPENS BOX Repeat No. 5 "Sirene" 2 Min.

Lento

- 9 (Action) GIRL WALKS FROM ROOM Cabaret Capers (Allen) 1 Min.

Marcia *Copyright 1913 Walter Jacobs*

10 (Action) ORCHESTRA BEGINS TO PLAY She's a Great, Great Girl (Woods) ¾ Min.

Musical notation for 'ORCHESTRA BEGINS TO PLAY' in 4/4 time, marked *Mod^{to}*. Copyright 1928 Shapiro, Bernstein & Co.

11 (Title) THAT'S A PRIVATE PARTY The Varsity Drag (Henderson) 1½ Min.

Musical notation for 'THAT'S A PRIVATE PARTY' in 4/4 time, marked *Mod^{to}*. Copyright 1927 De Sylva, Brown & Henderson.

12 (Action) END OF DANCE If You Don't Believe Me (Ager) 3 Min

Musical notation for 'END OF DANCE' in 4/4 time, marked *Mod^{to}*. Copyright 1928 Ager, Yellen & Bornstein.

13 (Action) PLAY ONCE AND SEGUE Last Night I Dreamed I Kissed You (Lombardo) 1¾ Min.

Musical notation for 'PLAY ONCE AND SEGUE' in 4/4 time, marked *Mod^{to}*. Copyright 1928 Leo Feist.

14 (Action) GIRLS FORM RING ON FLOOR Comedy Excitement (Zamecnik) ¾ Min.

Musical notation for 'GIRLS FORM RING ON FLOOR' in 2/4 time, marked *All^o*. Copyright 1927 Sam Fox.

15 (Title) I MUST GO The Trusting Place (Schertzing) LT. GREEN 1½ Min.

Musical notation for 'I MUST GO' in 4/4 time, marked *Mod^{to}* and *mf*. Copyright 1924 Photo Play Music.

16 (Action) FADE-OUT TO EXTERIOR Repeat No. 6 WHITE 1 Min.

Musical notation for 'FADE-OUT TO EXTERIOR' in 4/4 time, marked *And^{te} molto mod^{to}*.

17 (Title) NO, DON'T TELL ME Carnival Frolics (Lakay) 1 Min.

Musical notation for 'NO, DON'T TELL ME' in 4/4 time, marked *All^o giusto*. Copyright 1927 Irving Berlin.

18 (Action) STOP SHORT AS BOY KISSES GIRL Repeat No. 15 LT. GREEN 1 Min.

Musical notation for 'STOP SHORT AS BOY KISSES GIRL' in 4/4 time, marked *Mod^{to}*.

19 (Action) GIRL GOES UPSTAIRS Try Me (Schertzing) Chorus only 1½ Min.

Musical notation for 'GIRL GOES UPSTAIRS' in 4/4 time, marked *All^o Mod^{to}*. Copyright 1927 Photo Play Music.

20 (Title) WEEK-END Moment Gai (Leich) 1½ Min.

Musical notation for 'WEEK-END' in 4/4 time, marked *All^oto* and *mf*. Copyright 1923 Walter Jacobs.

21 (Title) WOULD YOU MIND Repeat No. 15 LT. GREEN 1 Min.

22 (Title) I KNOW IT Repeat No. 20 "Moment Gai" 1 Min.

23 (Action) OCEAN BEACH SHOWS Repeat No. 15 LT. GREEN 3½ Min.

24 (Action) FADE-OUT AFTER GIRL LEAVES BOY

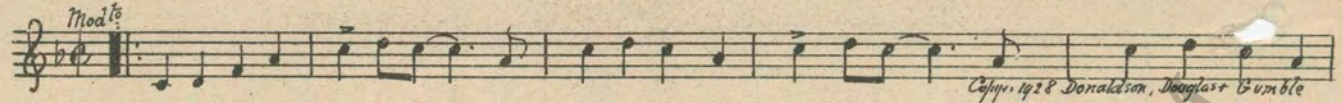
ON CLIFF Constantinople (Carlton) 1 Min.

Musical notation for 'FADE-OUT AFTER GIRL LEAVES BOY ON CLIFF' in 6/8 time, marked *Marcia*. Copyright 1928 De Sylva, Brown & Henderson.

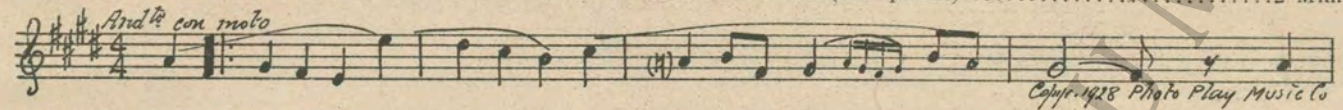
- 25 (Action) ACTION STOPS AS GIRLS ON FLOOR Doloris (Viola) 1 Min.
And^{te}
Copy. 1922 Photo Play Music.
- 26 (Action) BOY LOOKING AT NECKTIE Repeat No. 24 "Constantinople" 1/2 Min.
Marcia
- 27 (Action) FADE-OUT OF SCENE SHOWING NECKTIE
 IN BOY'S HAND Frinrance (Cohn) 1 1/4 Min.
Mod^{to}
Copy. 1928 De Sylva, Brown + Henderson.
- 28 (Action) GIRL AT YACHT RAIL Babylon Suite Part 2 2 1/2 Min.
Valse mod^{to}
Copy. 1925 Carl Fischer.
- 29 (Title) I'LL GET BEN Nettuno (Viola) DARK GREEN 2 3/4 Min.
And^{te}
Copy. 1912 Photo Play Music Co.
- 30 (Action) DIANA ENTERS HER BEDROOM Repeat No. 19 "Try Me" 1 Min.
 31 (Action) MOTHER AND DAUGHTER SHOW Repeat No. 28 DARK GREEN 2 Min.
 32 (Action) AFTER LETTER WRITTEN Repeat No. 6 WHITE 1 1/4 Min.
 33 (Title) I MUST HURRY My Abode (Schubert) 1 Min.
- Vivace*
Copy. 1922 Oliver Ditson.
- 34 (Title) AND I'VE LOST Repeat No. 4 Lt. Romantic Theme 1 Min.
 35 (Action) LETTER ON SCREEN Little Flower Garden) (Breil) 2 Min.
All^{to}
Copy. 1923 Belwin Inc.
- 36 (Title) YOUR DADDY BROUGHT ME Repeat No. 6 WHITE 2 1/2 Min.
 37 (Action) AFTER POST CARD ON SCREEN Violetta (Olman) 1 1/4 Min.
All^{to}
Copy. Sam Fox.
- 38 (Title) I HEARD FROM ANN Smiles (Scherville) 1 1/2 Min.
All^{to}
Copy. 1924 Hawkes + Son.
- 39 (Title) HERE'S TO THE HUSBANDS The Lure of Crimson (Marquardt) RED 1 3/4 Min.
All^{to} mod^{to}
Copy. 1925 Music Buyer's Corp.
- 40 (Title) NORMAN, YOU MUST FORGIVE Repeat No. 6 WHITE 1 Min.
 41 (Action) TWO GIRLS SIT DOWN Repeat No. 4 Lt. Romantic Theme 3/4 Min.
 42 (Action) FADE AFTER "YOU CAN THANK GOD" Repeat No. 29 DARK GREEN 2 1/2 Min.
 43 (Action) MOTHER LEAVES HOUSE Repeat No. 5 "Sirene" (Viola) 1 Min.
 44 (Action) STOP SHORT AS DOOR OPENS Repeat No. 29 DARK GREEN 2 1/2 Min.
 45 (Title) JUST BECAUSE MOTHER Melodic Appassionato No. 1 (Marquardt) 3/4 Min.

Appassionato
Copy. 1928 Music Buyer's Corp.

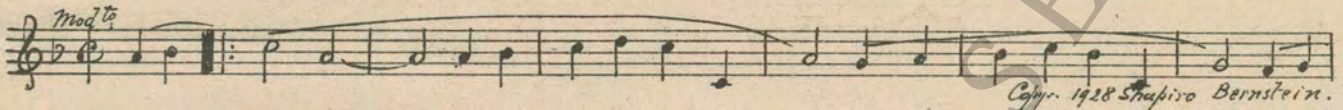
46 (Action) FADE-OUT HUSBAND AT DOOR Because My Baby Don't Mean Maybe Now (Donaldson).....3 Min.



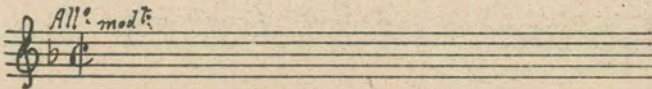
47 (Action) AFTER GIRL GOES UPSTAIRS Romance Sans Paroles (Marquardt)2 Min.



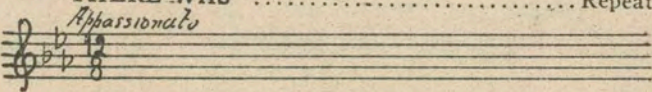
48 (Action) GIRL GETS OUT OF AUTO..... In the Evening (Hanley)1 Min.



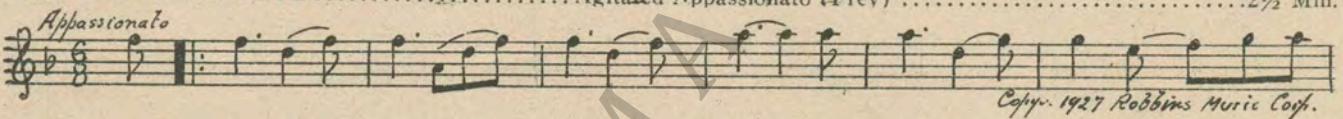
49 (Title) BON VOYAGE, DIANA Repeat No. 19 "Try Me"2 Min.



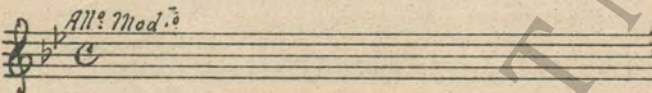
50 (Action) DRUNKEN GIRL APPEARS IN DOOR
AFTER TITLE: "BUT I THOUGHT
THERE WAS" Repeat No. 45 Melodic Appass.....3 Min.



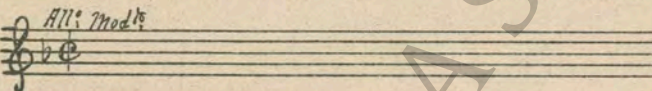
51 (Action) NOTE: Not too noisy at opening.
PLAY ONCE AND SEGUE Agitated Appassionato (Frey)2½ Min.



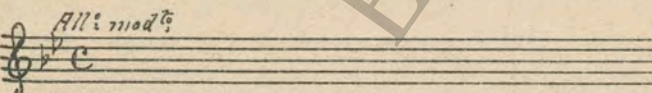
52 (Title) NOT ME, I DON'T CRAVE Repeat No. 39 RED1 Min.



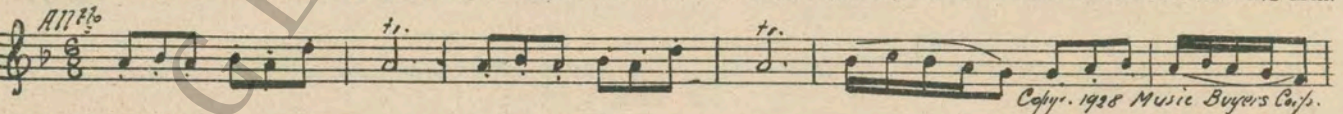
53 (Action) EXTERIOR SCENE—LOVERS MEET Repeat No. 19 "Try Me"2¼ Min.



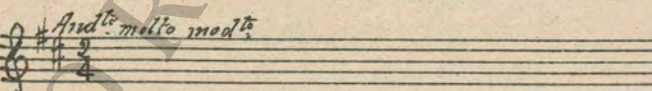
54 (Action) FADE-OUT AS AUTO DRIVES UP Repeat No. 39 RED1½ Min.



55 (Action) DRUNKEN GIRL AT HEAD OF STAIRS Scherzo Silhouette (Marquardt)2¼ Min.



56 (Action) GIRL ROLLS DOWNSTAIRS Repeat No. 6 WHITE1¼ Min.



NOTE: End with Drum Roll and Crash.

THE END

PROPER REST PERIOD Nos. 30 to 41 INCLUSIVE.

NOTE:—The repetition of numbers in this cue sheet is simplified by the use of the "LUZ" Symphonic Color Guide, sold by Music Buyers Corp., 1520 B'way, New York City. The color suggested for repetition of numbers designate the Mood or Emotion and is used as a code for such repetitions.
Country of Origin, U. S. A.

Complete orchestrations and single piano parts of each separate number contained hereon, can be purchased from CAMEO MUSIC SERVICE CORPORATION, 315-317 WEST 47TH STREET, NEW YORK CITY.