

DM 53



MARION DAVIES
in
THE PATSY

with
MARIE DRÉSSLER and LAWRENCE GRAY
A KING VIDOR PRODUCTION

Based on the play by Barry Connors
Continuity by Agnes Christine Johnston
Directed by King Vidor
A Marion Davies Production
Compiled by Ernst Luz

A METRO-GOLDWYN-MAYER PICTURE

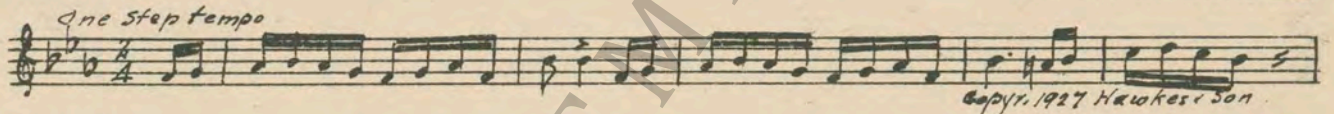
Length of film 8 reels (7270 feet)

Maximum projection 1 hour, 25 minutes

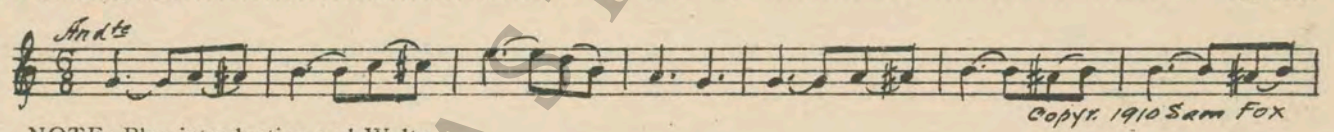
- 1 AT SCREENING Venus On Earth (Lincke) 3½ Min.



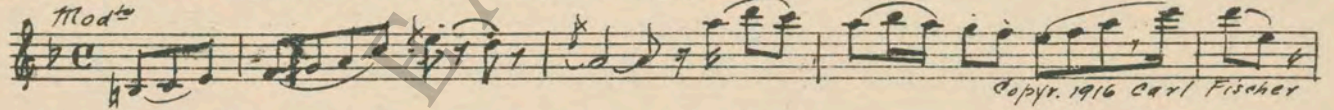
- 2 (Action) DOORBELL ON SCREEN A Ticklish Tale (Finck) 1 Min.



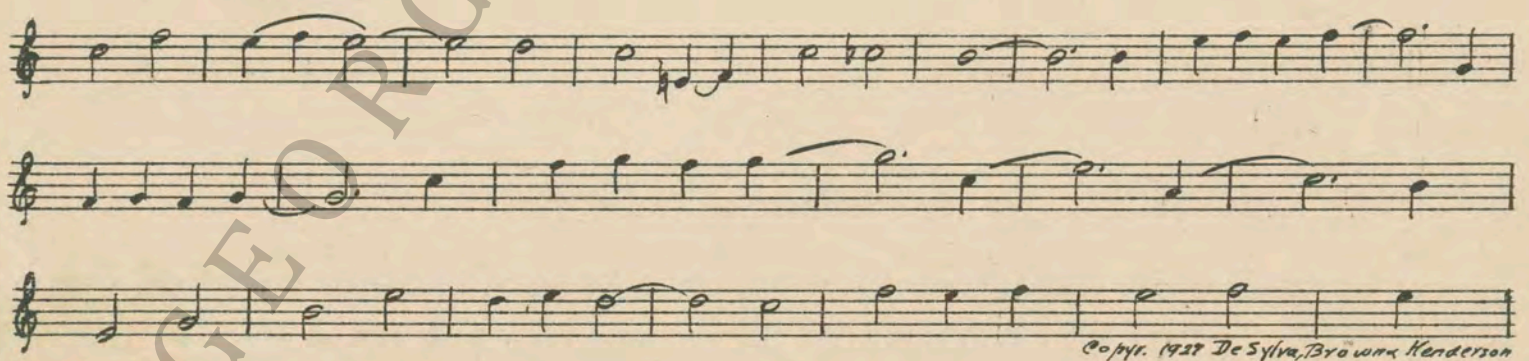
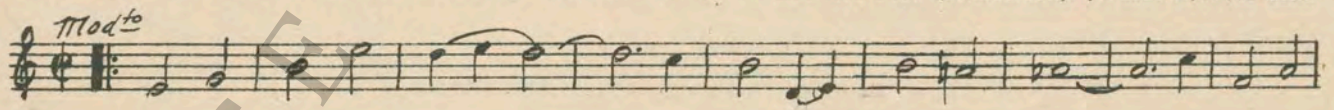
- 3 (Title) DO I MOON, PA Puritana (Grimm) 3¼ Min.



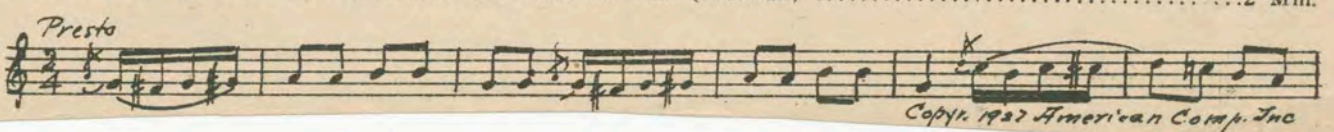
- 4 (Action) PATSY GOES INTO KITCHEN Just a Gem (Tobani) 3½ Min.



- 5 (Action) GIRL IN KITCHEN WRITES NAME ON SOAP. The Best Things In Life Are Free (Henderson) (WHITE).... 1 Min.



- 6 (Title) THE YACHT CLUB DANCE On the Run (Bierman) 2 Min.



7 (Action) HUSBAND POWDERS WIFE'S BACK Le Retour (Bizet) (LT. BLUE) 1 Min.

Musical notation for item 7, starting with *All.^o* and ending with *Copyr. 1911 G. Schirmer*

8 (Title) LOOKS LIKE MA'S TEARS Humorous Escapade (Delille) 2 Min.

Musical notation for item 8, starting with *All.^o* and ending with *Copyr. 1937 Irving Berlin*

9 (Action) STAR IN BLACK SKY SHOWS Repeat No. 5 (WHITE) 1/2 Min.

Musical notation for item 9, starting with *Mod.^{to}*

10 (Title) THE YACHT CLUB Valsette (Sanderson) 3 Min.

Musical notation for item 10, starting with *All.^o* and ending with *Copyr. 1926 Gould & Bortler*

11 (Action) EXTERIOR SCENE NOTE: Play introduction and Waltz. Pine Tree Echoes (Schoenfeld) 1 1/4 Min.

Musical notation for item 11, starting with *All.^o grazioso* and ending with *Copyr. 1922 Photo Play M. Co.*

12 (Action) YOUNG MAN IN DINING ROOM The Jolly Rover (Schoenfeld) (BROWN) 2 1/4 Min.

Musical notation for item 12, starting with *Giocoso* and ending with *Copyr. 1927 Music Buyc. Corp.*

13 (Title) DON'T MIND HIM Without You Sweetheart (Henderson) 2 1/4 Min.

Musical notation for item 13, starting with *Mod.^{to}* and ending with *Copyr. 1927 De Sylva, Brown & Henderson*

14 (Action) BOAT LEAVES DOCK Zip (Frey) 1/2 Min.

Musical notation for item 14, starting with *Galop* and ending with *Copyr. 1925 Robbins Music Corp.*

15 (Action) PLAY ONCE AND SEGUE Repeat No. 7 (LT. BLUE) 1 Min.

Musical notation for item 15, starting with *All.^o*

16 (Title) I'M NOT HOPELESSLY IN LOVE Repeat No. 5 (WHITE) 1 Min.

Musical notation for item 16, starting with *Mod.^{to}*

17 (Title) THE VERY NEXT DAY Tender Heart (Baga) 3 Min.

Musical notation for item 17, starting with *Lento* and ending with *Copyr. 1926 Hawkes & Son*

18 (Action) MARION DAVIES RUNS UPSTAIRS Repeat No. 7 (LT. BLUE) 1 Min.

Musical notation for item 18, starting with *All.^o*

19 (Action) FATHER AT DOOR TO PAT'S ROOM A Bedtime Tale (Swinnen) 2 1

Allegro moderato
Handwritten musical notation for 'FATHER AT DOOR TO PAT'S ROOM' in treble clef, 2/4 time, with a key signature of one sharp (F#). The tempo is marked 'Allegro moderato'. The piece ends with a repeat sign. Copyright: 1926 Belwin Inc.

20 (Title) SHE IS EXPECTING A PHONE CALL Repeat No. 12 (BROWN) 2 3/4 Min

Allegro
Handwritten musical notation for 'SHE IS EXPECTING A PHONE CALL' in treble clef, 2/4 time, with a key signature of one sharp (F#). The tempo is marked 'Allegro'. The notation is mostly blank with some initial notes. Copyright: 1926 Belwin Inc.

21 (Action) DOORBELL RINGS A Fairy Flirtation (Wheeler) 1 Min

Allegro
Handwritten musical notation for 'DOORBELL RINGS' in treble clef, 2/4 time, with a key signature of one sharp (F#). The tempo is marked 'Allegro'. Copyright: 1924 Belwin Inc.

22 (Action) END OF TELEPHONING Allegro con Moto (Borch) 1 Min

Vivo
Handwritten musical notation for 'END OF TELEPHONING' in treble clef, 2/4 time, with a key signature of one sharp (F#). The tempo is marked 'Vivo'. Copyright: 1926 Belwin Inc.

23 (Action) MARION DAVIES MEETS BOY ON STAIRWAY Romance sans Paroles (Louie) 2 Min.

Andante cantabile
Handwritten musical notation for 'MARION DAVIES MEETS BOY ON STAIRWAY' in treble clef, 2/4 time, with a key signature of one sharp (F#). The tempo is marked 'Andante cantabile'. Copyright: 1920 Boosey & Co.

24 (Action) MARION DAVIES OPENS DOOR Repeat No. 5 (WHITE) 1 1/2 Min

Allegro
Handwritten musical notation for 'MARION DAVIES OPENS DOOR' in treble clef, 2/4 time, with a key signature of one sharp (F#). The tempo is marked 'Allegro'. The notation is mostly blank with some initial notes. Copyright: 1926 Belwin Inc.

25 (Title) I'M THROUGH Repeat No. 7 (LT. BLUE) 1 Min

Allegro
Handwritten musical notation for 'I'M THROUGH' in treble clef, 2/4 time, with a key signature of one sharp (F#). The tempo is marked 'Allegro'. The notation is mostly blank with some initial notes. Copyright: 1926 Belwin Inc.

26 (Title) I'M A WOMAN April's Lady (Ancliffe) 1 Min.

Con tenerozza
Handwritten musical notation for 'I'M A WOMAN' in treble clef, 2/4 time, with a key signature of one sharp (F#). The tempo is marked 'Con tenerozza'. Copyright: 1923 Bosworth & Co.

27 (Title) HOW ARE YOU GETTING ALONG? Where Roses Bloom (Edwards) 1 1/4 Min.

Cantabile
Handwritten musical notation for 'HOW ARE YOU GETTING ALONG?' in treble clef, 2/4 time, with a key signature of one sharp (F#). The tempo is marked 'Cantabile'. Copyright: 1921 Irving Berlin.

28 (Title) PAT CHOSE Repeat No. 5 (WHITE) 1 Min.

Allegro
Handwritten musical notation for 'PAT CHOSE' in treble clef, 2/4 time, with a key signature of one sharp (F#). The tempo is marked 'Allegro'. The notation is mostly blank with some initial notes. Copyright: 1926 Belwin Inc.

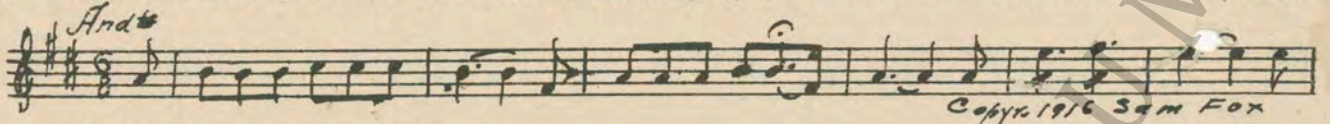
29 (Action) MOTHER INTERRUPTS LOVERS Andantino Idillico (Drigo's Cinema Classics) 2 Min.

Andantino moderato
Handwritten musical notation for 'MOTHER INTERRUPTS LOVERS' in treble clef, 2/4 time, with a key signature of one sharp (F#). The tempo is marked 'Andantino moderato'. Copyright: 1926 Carl Fischer.

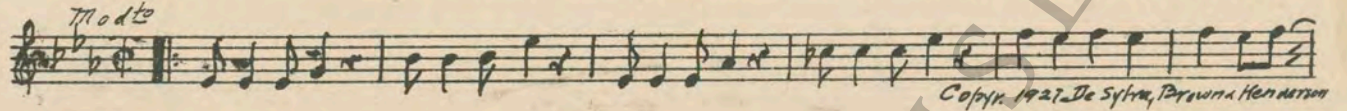
30 (Title) I'LL BET YOU ANYTHING IN THE WORLD..Love Song (Nevin) 4 Min.

Andante
Handwritten musical notation for 'I'LL BET YOU ANYTHING IN THE WORLD' in treble clef, 2/4 time, with a key signature of one sharp (F#). The tempo is marked 'Andante'. Copyright: 1917 Bosworth & Co.

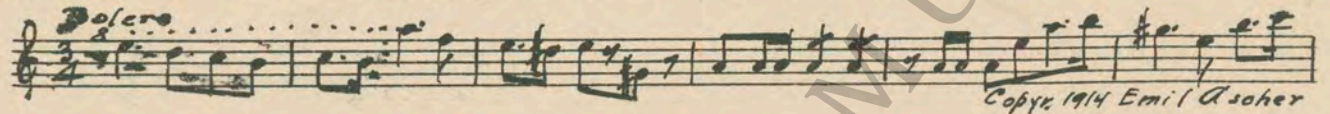
(Action) **PLAY ONCE AND SEGUE** My Dreams (Lee) 2 Min.



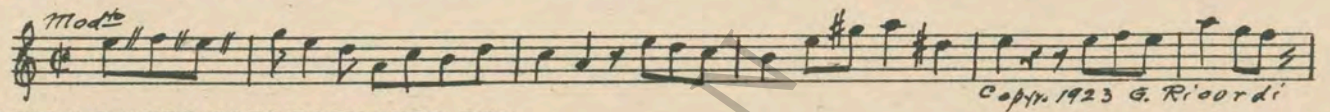
(Action) **FADE-OUT AS FATHER IS SEEN TALKING TO MARION DAVIES IN BED** Varsity Drag (Henderson) 1 1/4 Min.



3 (Action) **MARION DAVIES DOES CHARLESTON** In Old Madrid (Trotter) 1 Min.

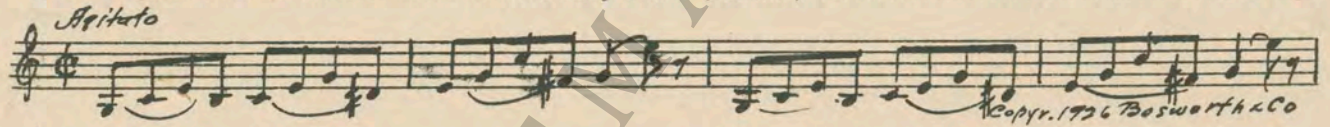


34 (Action) **MARION DAVIES WALKS OUT OF ROOM**.... Childhood Visions (Starnes) 1 1/2 Min.

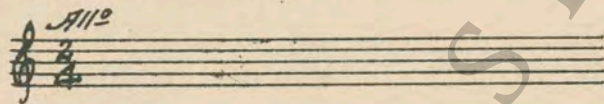


35 (Action) **MARION DAVIES GOES BACK INTO BED-ROOM-SEES PICTURES ON WALL**.... Play No. 1 of "Suite of Serenades" (Herbert) (Harms)..... 1 1/2 Min.

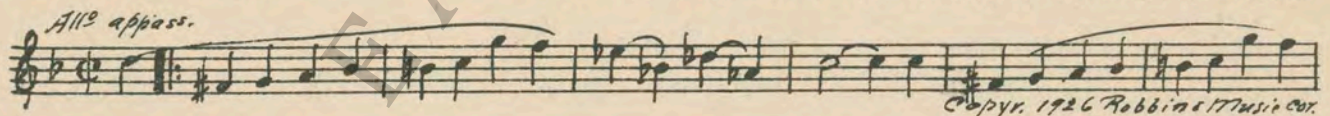
36 (Action) **MARION DAVIES RE-ENTERS BEDROOM AND TELEPHONES** Hurry No. 1 (Ancliffe) 2 1/4 Min.



37 (Title) **I'M THROUGH WITH YOU** Repeat No. 7 (LT. BLUE) 3 Min.



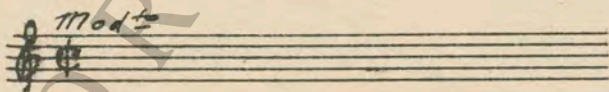
38 (Action) **PLAY ONCE AND SEGUE** Appassionato No. 4 (Axt) 2 Min.



39 (Title) **YOU SURE MURMURED AN EARFUL** In the Time of Roses (Huerter) 2 Min.



40 (Action) **MOTHER AND FATHER IN EMBRACE**..... Repeat No. 5 (WHITE) 1 Min.



THE END

Proper orchestral rest period is Nos. 19 to 29 inclusive.

NOTE: The repetition of numbers in this cue sheet is simplified by the use of the "LUZ" SYMPHONIC COLOR GUIDE, sold by Music Buyers Corporation, 1520 Broadway, New York City. The color suggested for repetition of numbers designates the Mood or Emotion, and is used as a code for such repetitions. Country of Origin, U. S. A.

Complete orchestrations and single piano parts of each separate number contained hereon, can be purchased from **CAMEO MUSIC SERVICE CORPORATION, 315-317 WEST 47TH STREET, NEW YORK CITY.**

95:2210:1