

First National Pictures, Inc.  
 presents  
**“THE PERFECT SAP”**  
 with  
**BEN LYON and PAULINE STARKE**  
 Music compiled by James C. Bradford  
 A FIRST NATIONAL PICTURE

1 AT SCREENING ..... Petite Bijouterie (Bohm) ..... Min.

*Valse*

copyr. 1915 G. Schirmer

2 (Title) MIDNIGHT ..... March Burlesque (Gillet) ..... 2¾ Min.

*Marcia*

Copyr. 1910 Enoch & Co

3• (Action) ENTER DARK ROOM ..... Spirit of the Night (Neinass) ..... 2¾ Min.

*Andte*

Copyr. 1925 Heinrich Hofen

4 (Title) THIS IS POLLY ..... Marche Mignonne (Poldini) ..... 1¼ Min.

*Leggiero*

Copyr. 1920 G. Schirmer

5 (Action) COUPLE AWAKEN ..... Ghost-Scene (Broy) ..... 1 Min.

*Andte*

Copyr. 1925 Heinrich Hofen

6 (Action) ALARM GIVEN ..... Allegro Agitato (Kiefert) ..... 2¼ Min.

*Allo*

Copyr. 1916 S. M. Berg

7 (Title) HERBERT'S APARTMENT ..... Blushing Coquette (Schendel) ..... 2½ Min.

*Allo*

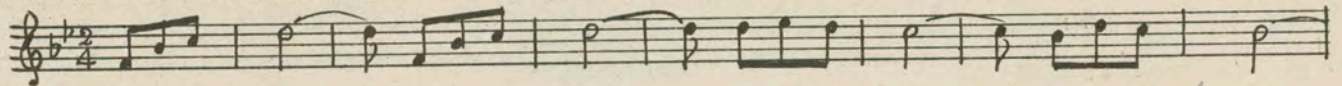
Copyr. 1921 Belwin

8 (Title) I WANT TO THANK YOU CORPORAL ..... LOVE THEME: For a Girl Like You (Rice) ..... ¾ Min.

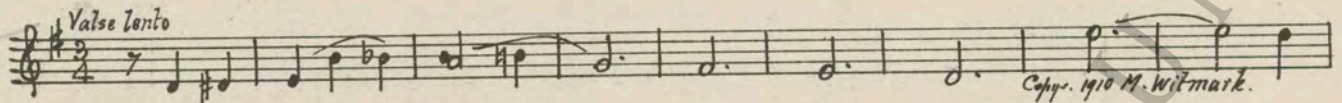
*Dreamily*

copyr. 1926 Witmark & Sons

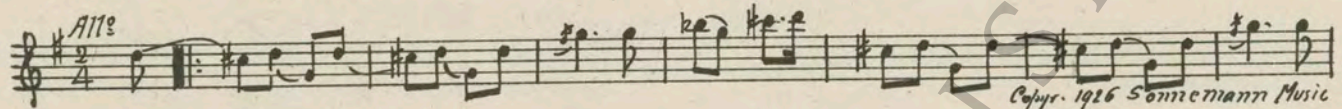
9 (Action) GEORGE OPENS BOOZE CLOSET ..... How Dry I Am ..... ¼ Min.



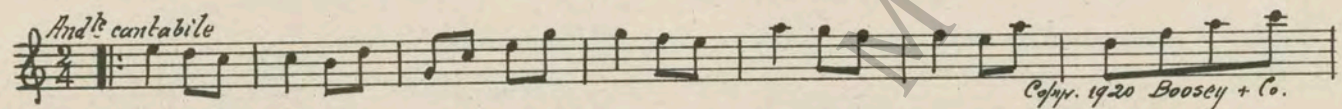
10 (Title) YOU'D BETTER STAY HERE ..... I'm Falling In Love (Herbert) ..... 2 Min.



11 (Title) YOU SHOULDN'T HAVE ASKED THEM TO STAY ..... Chatter (Kahn) ..... ¾ Min.



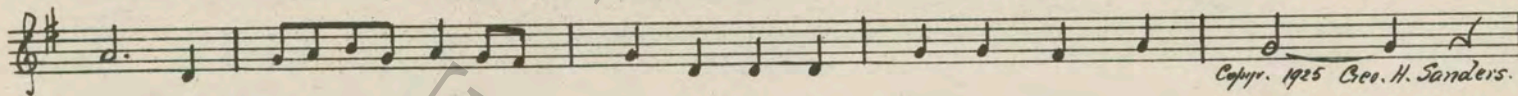
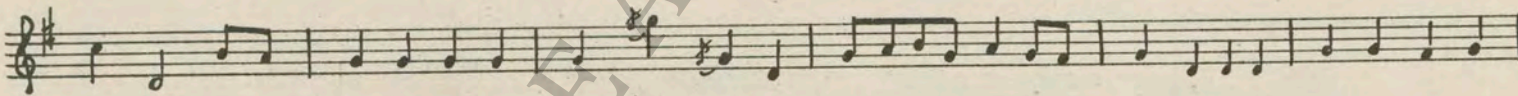
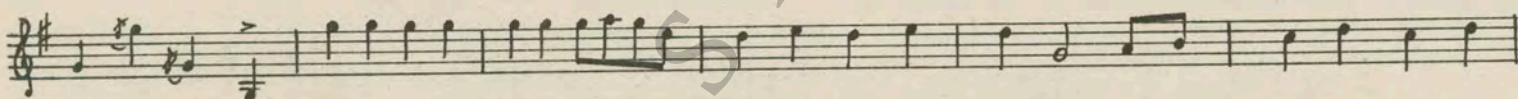
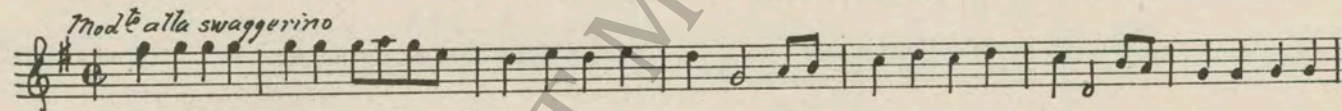
12 (Title) HERBERT ARRIVED HOME ..... Romance sans Paroles (Louie) ..... 1½ Min.



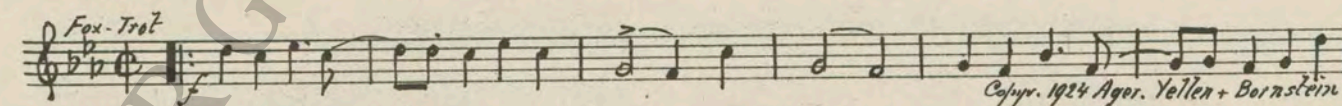
13 (Title) A DETECTIVE TO SEE YOU ..... Hearts and Flowers (Tobani) ..... 1¼ Min.



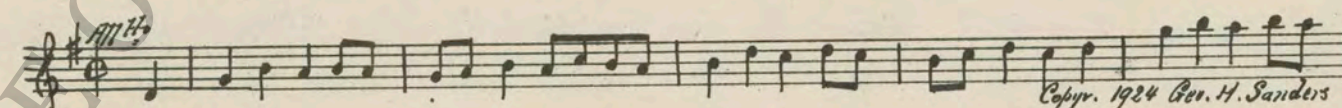
14 (Title) FANSHAW ..... FANSHAW THEME: The Show-Off (Sanders) ..... 3 Min.



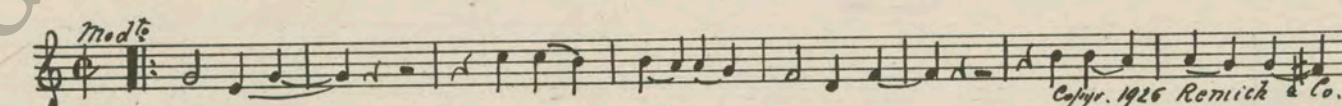
15 (Title) I'M READY TO ..... Big Boy (Ager) ..... 1 Min.



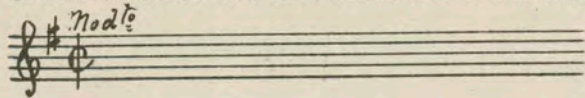
16 (Action) FANSHAW LOOKING OVER GROUND ..... The Hustler (Srawley) ..... ¾ Min.



17 (Action) HERBERT AND GIRL ON SOFA ..... Baby Face (Davis) ..... 1¼ Min.



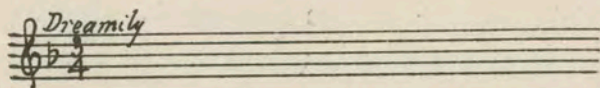
18 (Action) FANSHAW LOOKING ABOUT .....Repeat Fanshaw Theme No. 14 .....1¼ Min.



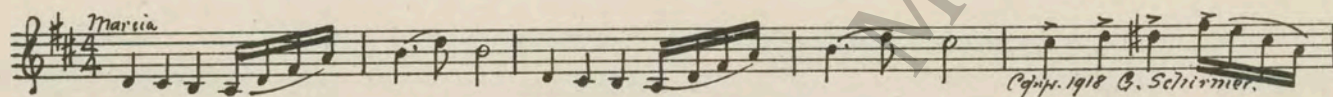
19 (Title) NOTE: Catch rustle of paper and tearing ad lib. POLLY AND GEORGE MOVED IN .....I'm Sitting On Top of the World (Henderson) .....1½ Min.



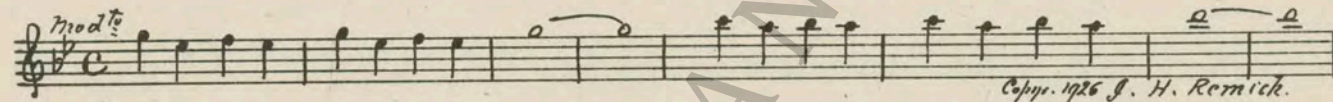
20 (Title) WERE YOU WORRIED ABOUT ME .....Repeat Love Theme No. 8 .....1¼ Min.



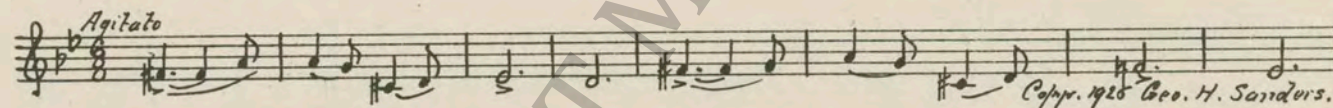
21 (Action) INSERT—ALWAYS DOMINATE YOUR MAN.. Frivolous Patrol (Goublier) .....¼ Min.



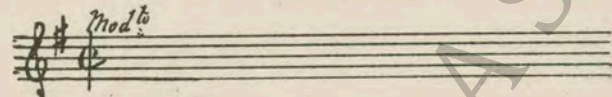
22 (Title) YOU'RE WONDERFUL .....Who Could Be More Wonderful Than You (Davis) .....1½ Min.



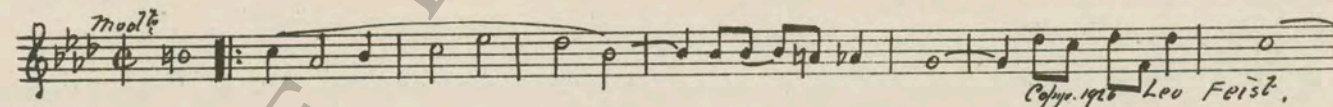
23 (Title) ROBBERS, POLICE, HELP .....Threatening Elements (Schad) .....2¼ Min.



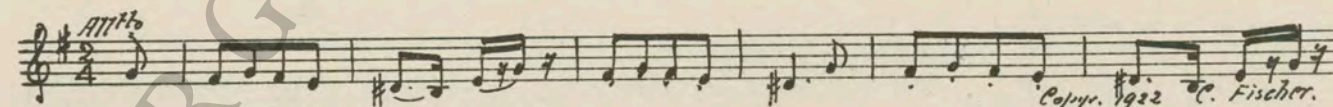
24 (Title) THIS WASN'T AN OUTSIDE JOB .....Repeat Fanshaw Theme No. 14 .....½ Min.



25 (Title) I HOPE IT WASN'T POLLY .....I'm Walking Around In Circles (Phillips) .....½ Min.



26 (Action) GEORGE ENTERS—PLANS JOB .....Humoresque (Tschaikowsky) .....1 Min.



27 (Title) DID YOU COP A DIAMOND NECKLACE .....Love-Passion (Knoche) .....1¾ Min.



28 (Action) LIGHTS PUT OUT .....Implorations of Neptune (Massenet) .....3¼ Min.



29 (Title) ROBERTA ALDEN'S PARTY ..... Reaching For the Moon (Davis) ..... 1½ Min.

Musical notation for item 29, marked *Mod.to*. Copyright 1926 E. B. Marks.

30 (Action) FANSHAW STOPS DANCE ..... Valse Mysterieuse (Baron) ..... 1¾ Min.

Musical notation for item 30, marked *Valse lento*. Copyright 1925 M. Baron.

31 (Action) FANSHAW DEPOSITS JEWELS IN SAFE..... Repeat No. 2 "March Burlesque" ..... 1½ Min.

Musical notation for item 31, marked *Mariau*.

32 (Title) YOU'RE NOT GOING TO STAY HERE..... Magic Love (Bradford) ..... ¾ Min.

Musical notation for item 32, marked *Valse lento*. Copyright 1925 Sam Fox.

33 (Action) ROBERTA ON SOFA WITH HERBERT..... Repeat No. 17 "Baby Face" ..... ½ Min.

Musical notation for item 33, marked *Mod.to*.

34 (Action) DANCING STARTS ..... Me Too (Woods) ..... 1½ Min.

Musical notation for item 34, marked *Mod.to*. Copyright 1926 Shapiro, Bernstein.

35 (Action) DARK ROOM SCENE ..... Repeat No. 2 "March Burlesque" ..... ½ Min.

Musical notation for item 35, marked *Mariau*.

36 (Action) ALARM SWITCH TURNED ON - GONG RINGING ..... Storm, Strife or Tempest (Ancliffe) ..... ¾ Min.

Musical notation for item 36, marked *Presto*. Copyright 1926 Bosworth & Co.

37 (Title) EVERYONE MUST UNMASK ..... Dramatic Tension (Ancliffe) ..... 1½ Min.

Musical notation for item 37, marked *Con fuoco*. Copyright 1926 Bosworth.

38 (Title) FANSHAW NEVER FAILS ..... Repeat Love Theme No. 8 ..... ½ Min.

Musical notation for item 38, marked *Dreamily*.

THE END

Printed in U. S. A.

Orchestrations or single piano parts of each separate musical selection suggested hereon, can be purchased from CAMEO MUSIC SERVICE CORPORATION, 315-317 WEST 47TH STREET, NEW YORK CITY.

93:2217:1