

THEMATIC MUSIC CUE SHEET

[Part applied for]

Charles Chaplin

IN

“THE PILGRIM”

A FIRST NATIONAL PICTURE

COMPILED BY

JAMES C. BRADFORD

Complete Orchestrations and single parts of all compositions contained herein can be purchased from
Cameo Music Publishing Co. Inc., 112-118 West 44th Street, New York City

MADE IN U. S. A.



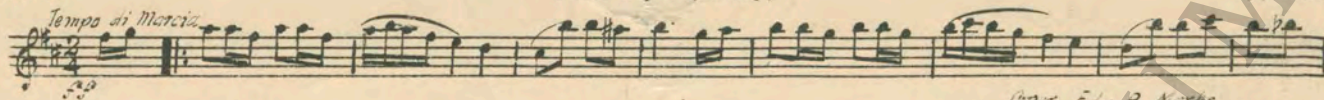
THEMATIC MUSIC CUE SHEET
(Pat. Applied For)
"THE PILGRIM"

Compiled by James C. Bradford

1 AT SCREENING

Peter Piper (Henry)

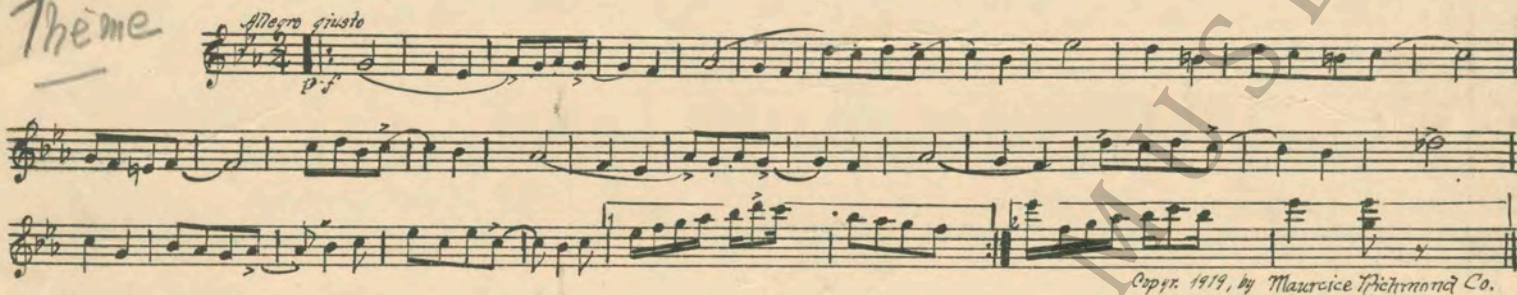
1/2 Min.



2 (Action) PILGRIM AT R. R. STATION

THEME: Somebody (Little)

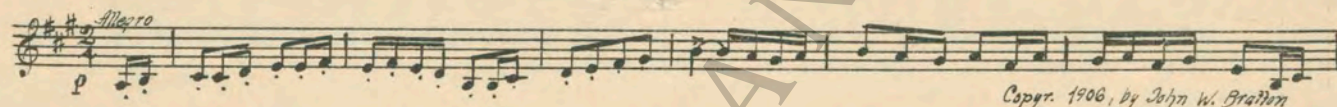
1 1/4 Min.



3 (Action) PILGRIM ENTERS R. R. STATION

Spangles (Bratton)

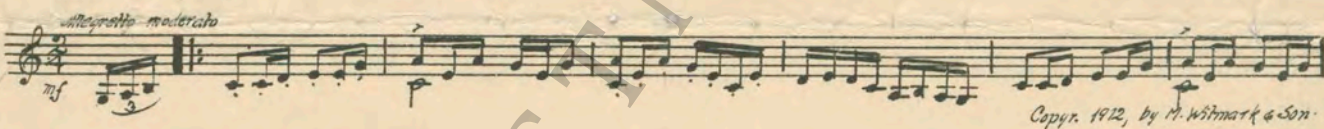
1 1/2 Min.



4 (Action) DEACONS AT BULLETIN

The Hay Ride (Bendix)

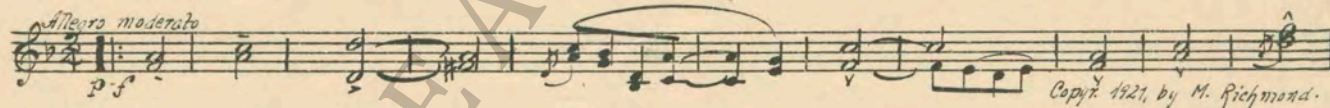
1 1/4 Min.



5 (Title) SUNDAY MORNING

Sunshine (Little)

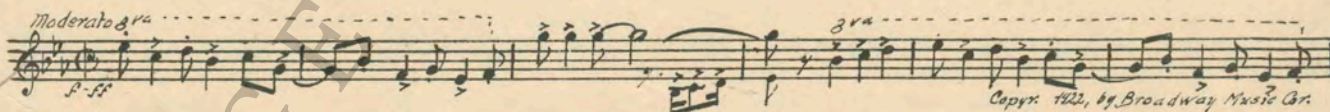
2 1/4 Min.



6 (Action) INSERT-TELEGRAM

Stuttering (Pinkard)

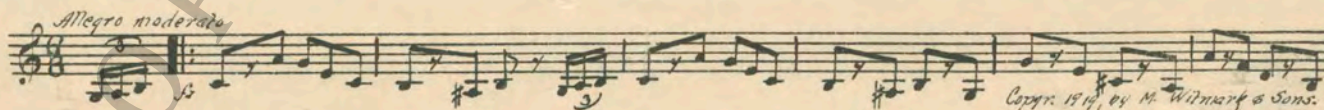
1 1/4 Min.



7 (Action) DEACON TEARS TELEGRAM

Mosquitos' Parade (Whitney)

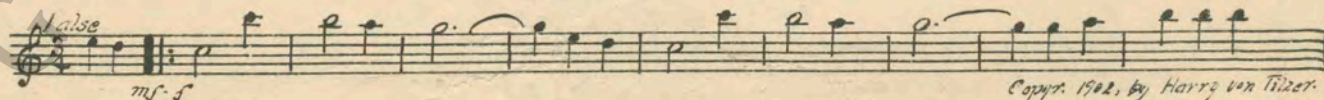
1 Min.



8 (Title) THE CHOIR

On a Sunday Afternoon (Von Tilzer)

1 1/4 Min.



Page Hymn 23 -

9 (Title) PAGE HYMN 23

Rejoice and Be Glad (Husband) (Hymn)

3/4 Min.

Musical score for 'Rejoice and Be Glad (Husband) (Hymn)'. It consists of two staves of music in 4/4 time, featuring a melody in the upper staff and a bass line in the lower staff.

10 (Action) CHOIR STOPS—RESUME SINGING

Sweet Hour of Prayer (Bradbury)

1 Min.

Musical score for 'Sweet Hour of Prayer (Bradbury)'. It consists of two staves of music in 6/8 time, featuring a melody in the upper staff and a bass line in the lower staff. The score includes dynamic markings like 'mf' and 'dc'.

11 (Title) THE SERMON

They Didn't Believe Me (Kern)

2 1/2 Min.

Musical score for 'They Didn't Believe Me (Kern)'. It consists of a single staff of music in 4/4 time, marked 'Moderato'. The score includes a copyright notice: 'Copyright 1916, by J. H. Remick'.

12 (Action) PILGRIM & DEACON LEAVE CHURCH

A Lucky Duck (Whitney)

2 Min.

Musical score for 'A Lucky Duck (Whitney)'. It consists of a single staff of music in 2/4 time, marked 'Allegro non troppo' and 'mf'. The score includes a copyright notice: 'Copyright 1903, by M. Witmark & Sons'.

13 (Title) MRS. BROWN

Lady of the Evening (Berlin)

1 1/4 Min.

Musical score for 'Lady of the Evening (Berlin)'. It consists of a single staff of music in 4/4 time, marked 'Grandioso'. The score includes a copyright notice: 'Copyright 1922, by Irving Berlin'.

14 (Action) VISION OF JAIL

Comrades (Lake)

1/2 Min.

Musical score for 'Comrades (Lake)'. It consists of a single staff of music in 2/4 time, marked 'Valse'. The score includes a copyright notice: 'Copyright 1911, by Carl Fischer'.

15 (Action) PILGRIM & MRS. BROWN ENTER ROOM

She May Have Seen Better Days (de Witt)

1 1/4 Min.

Musical score for 'She May Have Seen Better Days (de Witt)'. It consists of a single staff of music in 2/4 time, marked 'old time' and 'Tempo di Valse'. The score includes a copyright notice: 'Copyright 1896, by Carl Fischer'.

16 (Title) VISITORS

Razz Berries (Banta)

2 3/4 Min.

Musical score for 'Razz Berries (Banta)'. It consists of a single staff of music in 2/4 time, marked 'Allegro giusto'. The score includes a copyright notice: 'Copyright 1919, by M. Fischmann'.

17 (Action) PILGRIM ENTERS KITCHEN

This Is the Life (Berlin)

2 1/2 Min.

Musical score for 'This Is the Life (Berlin)'. It consists of a single staff of music in 2/4 time, marked 'Allegro giusto'. The score includes a copyright notice: 'Copyright 1914, by Waterson, Berlin & Snyder'.

Won't you stay for tea? - Waltz -

18 (Title) WON'T YOU STAY FOR TEA? Nights of Gladness (Ancliffe) 1 3/4 Min.

Waltz *sfz*

Copr. 1913, by Edm. B. Marks.

19 (Action) PILGRIM STARTS TO CARVE Where Did You Get That Hat? 1 Min.

Moderato

Copr. 1916, by F. Harbig.

20 (Title) IN THE EVENING How Many Times (Robinson) 2 1/4 Min.

Moderato

Copr. 1927, by Waterson, Berlin & Snyder.

21 (Action) ENTER HOUSE Repeat Theme No. 2 1 3/4 Min.

Theme *Allegro giusto*

22 (Title) THEN YOU MUST STAY Marceline (Trinkaus) 2 3/4 Min.

Con spirito
mf

Copr. 1906, by Th. Bendix.

23 (Title) DON'T WORRY, I'LL GET IT Crazy Love (Liggy) 2 1/4 Min.

Allegro giusto
f

Copr. 1921, by Waterson, Berlin

24 (Title) NEXT MORNING Just a Little Love Song (Cooper) 1 Min.

Moderato

Copr. Irving Berlin

25 (Title) I'M SORRY, MISS I Ain't Nobody's Darling (King) 3/4 Min.

Moderato
mf

Copr. 1921, by Skidmore Music Co.

26 (Action) STOP AT BORDER Nobody Knows Where Tosti Goes (Meyer) 1 1/2 Min.

Allegro giusto
sf

Copr. 1922, by Irving Berlin.

27 (Title) MEXICO A NEW LIFE Repeat Theme No. 2 1 Min.

Theme *Allegro giusto*

THE END