

M. J. MINTZ (PATENT)
JULY 31, 1923.

CARL LAEMMLE

presents
Edward Everett Horton and Laura LaPlante

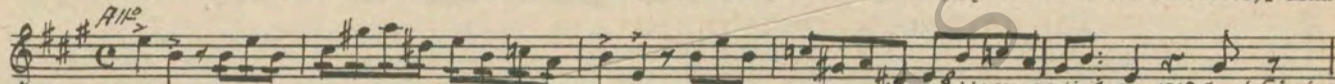
in
"POKER FACES"

By Edgar Franklyn

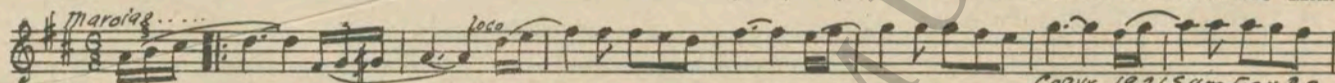
A Harry Pollard Production
Music compiled by James C. Bradford

UNIVERSAL-JEWEL

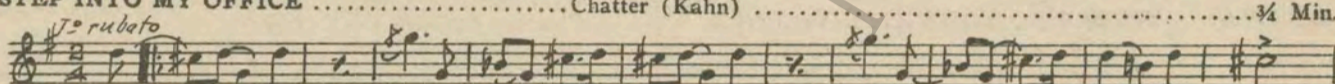
1 AT SCREENING Naila (Delibes) 1½ Min.



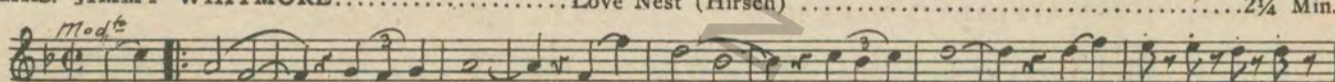
2 (Action) MR. CURLEW AT DESK The Drum Major (Ellis) 3 Min.



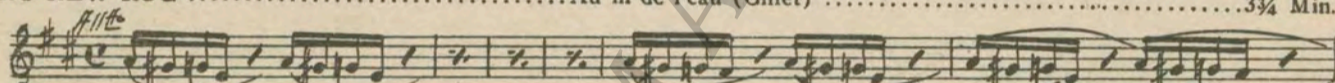
3 (Title) STEP INTO MY OFFICE Chatter (Kahn) ¾ Min.



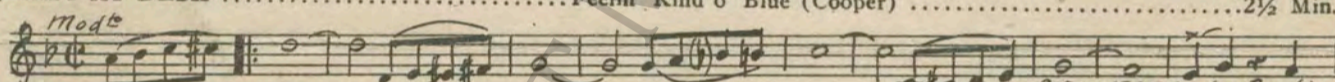
4 (Title) MRS. JIMMY WHITMORE Love Nest (Hirsch) 2¼ Min.



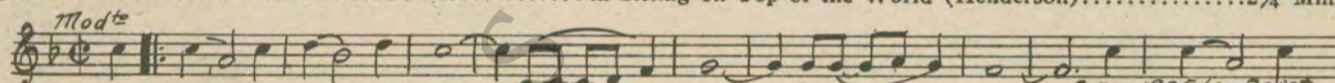
5 (Title) NO NEW RUG Au fil de l'eau (Gillet) 3¾ Min.



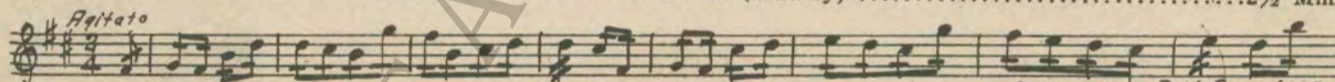
6 (Action) JIMMY AT DESK Feelin' Kind o' Blue (Cooper) 2½ Min.



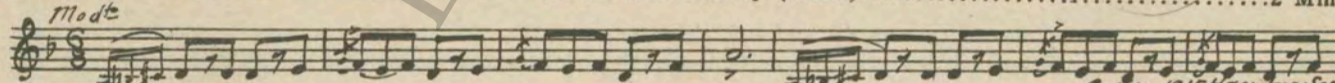
7 (Action) JIMMY TEARS UP RESIGNATION I'm Sitting on Top of the World (Henderson) 2¼ Min.



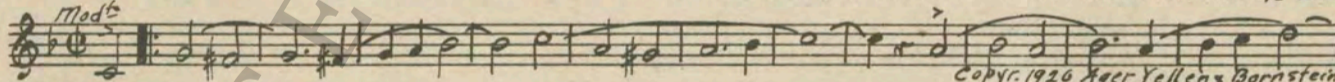
8 (Action) RAILROAD STATION Restless Bows (Srawley) 2½ Min.



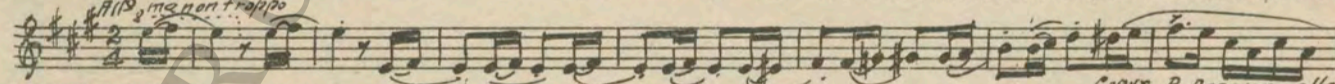
9 (Action) JIMMY SNEAKS BACK OF PILLAR The Hobbledehoy (Olsen) 2 Min.



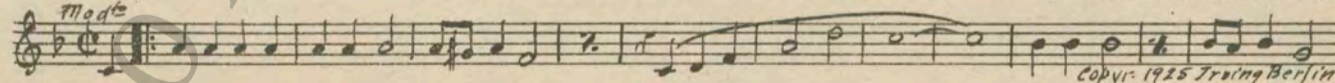
10 (Title) THIS LADY IS MY WIFE In Your Green Hat (Ager) ½ Min.



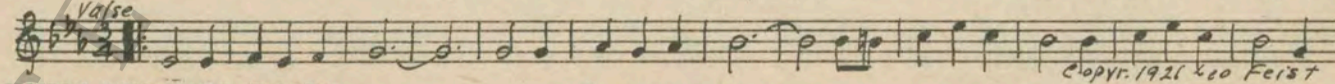
11 (Action) JIMMY LOOKS AT HIS WATCH Capricieuse (Gillet) 2½ Min.



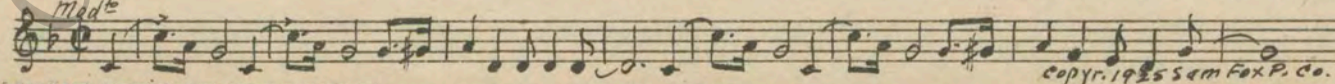
12 (Action) JIMMY ENTERS HOUSE My Sweetie Turned Me Down (Donaldson) 3 Min.



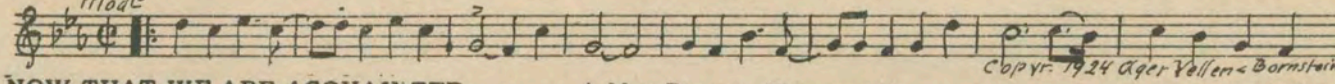
13 (Title) PACKY O'NEILL Mickey O'Neil (Pease) ¾ Min.



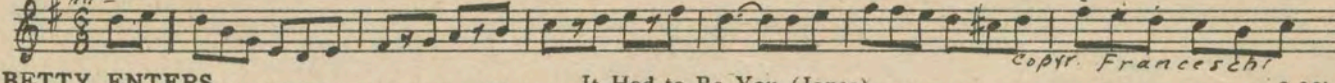
14 (Action) JIMMY AND GIRL ENTER Footloose (Rupp) 2 Min.



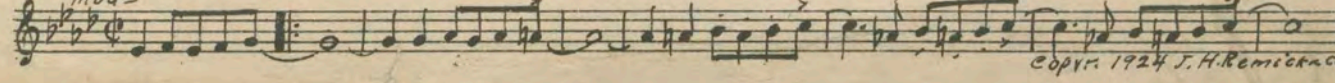
15 (Action) JIMMY RECOGNIZES DIXON Big Boy (Ager) ½ Min.



16 (Title) NOW THAT WE ARE ACQUAINTED A Mon Passage (Franceschi) 1½ Min.



17 (Action) BETTY ENTERS It Had to Be You (Jones) 2 Min.



420

MUSEUM

18 (Title) **AND HIS WIFE MRS. WHITMORE**..... Cheatin' On Me (Pollack)2¾ Min.
Mod^{to}

19 (Title) **IF THAT'S PEMERLEY** Why Should I Cry Over You (Cohn)1¼ Min.
Mod^{to}

Copyr. 1925 Ager Yellen & Bornstein

20 (Title) **SO LONG CURLEW**..... Mamma Goes Where Papa Goes (Ager)1½ Min.
Mod^{to}

Copyr. 1922 Leo Feist

21 (Action) **JIMMY RUSHES INTO RAILROAD STATION**, Thrills (Sanders)3½ Min.
Lively

Copyr. 1923 Ager Yellen & Bornstein

22 (Action) **CURLEW AND GIRL ALONE**..... In a Cozy Corner (Bratton)2½ Min.
All mod^{to}

Copyr. 1925 Sanders

23 (Title) **YOU CAN HAVE ROOM ACROSS THE HALL**, Oh Lady Be Good (Gershwin)1 Min.
Mod^{to}

Copyr. Witmark

24 (Action) **LIGHTS PUT OUT** Comedy Capers (Steele)2 Min.
Mod^{to}

Copyr. 1924 Harms Inc

25 (Title) **WHERE DO YOU THINK YOU ARE**..... Fourteen Fathoms Deep (Lake)¾ Min.
Mod^{to}

Copyr. 1925 E. Scher

26 (Action) **DIXON APPEARS IN DARK HALL**..... Little Goblins (Eilenberg)1¼ Min.
And^{te} mod^{to}

Copyr. Carl Fischer

27 (Title) **IT'S NO USE, I'LL HAVE TO ROCK HIM**..... Rocked in the Cradle of the Deep (Tobani).....1½ Min.
And^{te}

Copyr. 1923 Curly & Belfrage Co

28 (Title) **MISS BANFORD, COME TO MY ROOM**..... Cold, Cold Mamas (Gilbert)1½ Min.
All^o

Copyr. 1896 Carl Fischer

29 (Action) **CURLEW FALLS ASLEEP** Misterioso (Minot)1½ Min.
Mod^{to}

Copyr. 1924 Leo Feist

30 (Action) **DIXON OPENS DOOR** Moto Perpetuo (Weiss)3½ Min.
NOTE: Catch crash of jardiner to floor.
All^o cocitato

Copyr. 1916 S.M. Berg

31 (Action) **DIXON LOCKS JIMMY IN ROOM** Flappers' Promenade (Steele)3 Min.
All^o

Copyr. 1924 G.H. Sanders

32 (Title) **I WANT TO SEE MISS BANFORD**..... Gossip (Borch)3 Min.
All^o

Copyr. 1925 E. Scher

33 (Action) **JIMMY PLACES ARM AROUND BETTY**..... Nobody Loves You Like I Do (Davis)¾ Min.
Mod^{to}

Copyr. 1925 Belwin Inc

34 (Title) **YOU CAN'T EXPLAIN THAT WOMAN**..... Le' Retour (Bizet)1½ Min.
All^o vivace

Copyr. 1924 Erving Berlin

35 (Title) **IT'S NO USE** Violent Gale (Leuschner)4 Min.
All^o feroce

Copyr. E. Schirmer

36 (Action) **BOTH FIGHTERS COLLAPSE** Repeat No. 15 "Big Boy"1¼ Min.
NOTE: Catch effects, falls, crashes, etc., ad lib.
37 (Action) **BETTY KISSES JIMMY** My Hero (Straus)½ Min.
And^{te} ten^{to}

Copyr. 1910 J.H. Remick

38 (Action) **OFFICER RECOGNIZES DIXON** Poursuite (Fosse)½ Min.
All^o

Copyr. 1919 J. Vres

39 (Action) **BETTY AND JIMMY IN BED**..... Everything Is Hotsy Totsy Now (McHugh)1 Min.
Mod^{to}

Copyr. 1925 Jack Mills

THE END

Printed in U. S. A.

Complete orchestrations and single piano parts of each separate number contained herein, can be purchased from CAMEO MUSIC SERVICE CORPORATION, 315-317 West 17th Street, New York City.

95:2229:1