

May-24-25-26



GLORIA SWANSON
in
"SADIE THOMPSON"
Directed by Raoul Walsh
Compiled by Ernst Luz
United Artists Picture

Length of film 9 reels (8625 feet) Maximum projection time 1 hour, 40 minutes

1 AT SCREENING Symphonic Color Classic No. 4 (Hauenschild) (DK. GREEN) .1 Min.

4

2 (Title) PAGO, PAGO Wai-Loa (Schoenfeld) 2 Min.

3 (Action) GLORIA SWANSON WRITES IN BOOK Vivacity (Conterno) 1 3/4 Min.

4 (Action) HOUSE IN BACKGROUND SHOWS Sweet Luana (Zamecnik) 1 3/4 Min.

On Hilo Bay

5 (Action) NOTE: Play introduction and waltz. SADIE PUTS FINGERS IN MOUTH AND WHISTLES A Ticklish Tale (Finck) 2 Min.

Dance des Serments

6 (Title) YOU MOSEY ALONG Fairy Tiptoe (Fredericks) 1 1/2 Min.

7 (Title) DID YOU EVER HEAR THE ONE Radio Galop (Bub) 3/4 Min.

8 (Action) SADIE THOMPSON IN HOUSE Repeat No. 4 "Sweet Luana" 2 Min.

Hawaii Waltz

D-Food Brought on Table

9 (Action) FOOD BROUGHT ON TABLE Symphonic Color Classic No. 4 (Hauenschild) (RED)..... ¾ Min.

1

Musical notation for item 9: Treble clef, key signature of one sharp (F#), common time signature. Tempo marking: *Maestoso molto mod^{to}*. Dynamics marking: *mf*. Copyright: 1925 Music Buyers Corp.

10 (Action) SADIE THOMPSON AT RADIO Wabash Blues (Meinken) (Victrola) 1 Min.

T-1

Musical notation for item 10: Treble clef, key signature of one flat (Bb), common time signature. Tempo marking: *Mod^{to}*. Copyright: 1921 Leo Feist Inc.

11 (Action) MINISTER'S WIFE SPEAKS TITLE A Staggering Uncertainty (Lakay) 1½ Min.

Musical notation for item 11: Treble clef, common time signature. Tempo marking: *All^o*. Copyright: 1927 Irving Berlin Inc.

12 (Action) SADIE THOMPSON RE-ENTERS HOUSE AFTER SAILOR GOES OFF IN RAIN... Repeat No. 9 (RED) ½ Min.

1

Musical notation for item 12: Treble clef, key signature of one sharp (F#), common time signature. Tempo marking: *Maestoso molto mod^{to}*.

13 (Action) SADIE THOMPSON ENTERS ROOM WHERE VICTROLA IS SEEN Repeat No. 10 "Wabash Blues" (Victrola) 1 Min.

T-1

Musical notation for item 13: Treble clef, key signature of one flat (Bb), common time signature. Tempo marking: *Mod^{to}*.

14 (Action) MINISTER ENTERS ROOM Dramatic Love Scene (Axt) (LT. BLUE) 1¼ Min.

T-2

Musical notation for item 14: Treble clef, key signature of one flat (Bb), 3/8 time signature. Tempo marking: *All^o appassion^{ato}*. Copyright: 1926 Robbins Music Corp.

15 (Action) MINISTER THROWN OUT OF ROOM..... Repeat No. 9 (RED) ½ Min.

1

Musical notation for item 15: Treble clef, key signature of one sharp (F#), common time signature. Tempo marking: *Maestoso molto mod^{to}*.

16 (Action) SOLDIERS AND GIRL SEEN AT VICTROLA.. Repeat No. 10 "Wabash Blues" (Victrola) ¼ Min.

T-1

Musical notation for item 16: Treble clef, key signature of one flat (Bb), common time signature. Tempo marking: *Mod^{to}*.

17 (Action) MINISTER SEEN AFTER DANCING Repeat No. 9 (RED) ½ Min.

1

Musical notation for item 17: Treble clef, key signature of one sharp (F#), common time signature. Tempo marking: *Maestoso molto mod^{to}*.

18 (Action) SOLDIERS COME OUT OF SADIE'S ROOM... Speed (Frey)1 Min.

Musical notation for item 18, featuring a treble clef, key signature of one sharp (F#), and a 2/4 time signature. The tempo is marked *All^o*. The music consists of a single melodic line with eighth and quarter notes.

19 (Action) SOLDIERS LEAVE THROUGH TURNSTILE.. Repeat No. 9 (RED)1 Min.

① Musical notation for item 19, featuring a treble clef, key signature of one sharp (F#), and a common time signature. The tempo is marked *Maestoso molto mod^o*. The music consists of a single melodic line with quarter notes.

20 (Title) A RAINY PAGO, PAGO EVENING Symphonic Color Classic No. 4 (Hauenschild) (WHITE)....3 Min.

② Musical notation for item 20, featuring a treble clef, key signature of one sharp (F#), and a common time signature. The tempo is marked *Mod^o*. The music consists of a single melodic line with quarter notes.

Segue →

NOTE: Play once and segue.
SEGUE: Remembrance (Deppen).

Musical notation for the segue, featuring a treble clef, key signature of one sharp (F#), and a 3/4 time signature. The tempo is marked *And^{te}*. The music consists of a single melodic line with quarter notes.

21 (Action) GIRL PINNING MARINE PIN ON WAIST → Bugle Call in D Concert by Trumpeter ¼ Min.
22 (Action) BUGLER SCENE Symphonic Color Classic No. 4 (Hauenschild) (DK. GREEN) 1½ Min.

④ Musical notation for item 21, featuring a treble clef, key signature of one sharp (F#), and a common time signature. The tempo is marked *Mod^o con moto*. The music consists of a single melodic line with quarter notes.

23 (Action) SERGEANT LEAVES—SADIE THOMPSON RETURNS TO ROOM The Broken Melody (Van Biene)1 Min.

Musical notation for item 23, featuring a treble clef, key signature of one sharp (F#), and a common time signature. The tempo is marked *Adagio*. The music consists of a single melodic line with quarter notes.

24 (Action) MINISTER SEEN—LOVER AT SADIE'S WINDOW Repeat No. 20 (WHITE)1¼ Min.

② Musical notation for item 24, featuring a treble clef, key signature of one sharp (F#), and a common time signature. The tempo is marked *Mod^o*. The music consists of a single melodic line with quarter notes.

25 (Action) LOVER LEAVES WINDOW Cupids Caress (Roberts)1¼ Min.

Musical notation for item 25, featuring a treble clef, key signature of one sharp (F#), and a 3/4 time signature. The tempo is marked *Mod^o*. The music consists of a single melodic line with quarter notes.

26 (Title) ALL THROUGH THE NIGHT Symphonic Color Classic No. 4 (Hauenschild) (RED).....¼ Min.

① Musical notation for item 26, featuring a treble clef, key signature of one sharp (F#), and a common time signature. The tempo is marked *Maestoso molto mod^o*. The music consists of a single melodic line with quarter notes.

27 (Title) I'VE BEEN TALKING TO THE NATIVES..... Wabash Blues (Meinken) (Victrola)1 Min.

T-1.

Musical notation for item 27, featuring a treble clef, key signature of two flats (Bb), and a common time signature. The tempo is marked *Mod^o*. The music consists of a single melodic line with quarter notes.

Musical notation for item 27, featuring a treble clef, key signature of two flats (Bb), and a common time signature. The music consists of a single melodic line with quarter notes.

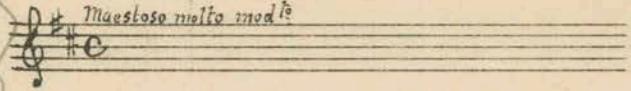
Musical notation for item 27, featuring a treble clef, key signature of two flats (Bb), and a common time signature. The music consists of a single melodic line with quarter notes.

Musical notation for item 27, featuring a treble clef, key signature of two flats (Bb), and a common time signature. The music consists of a single melodic line with quarter notes.

D - Sadie Walker out of Room -

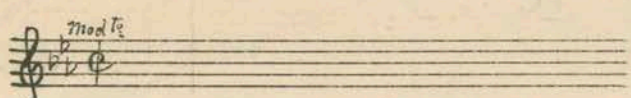
28 (Action) SADIE WALKS OUT OF ROOM Repeat No. 26 (RED) 1¼ Min.

①



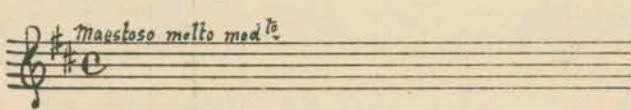
29 (Action) SADIE GETS UP FROM CHAIR Repeat No. 27 "Wabash Blues" (Victrola) 1 Min.

T-1



30 (Title) I GUESS YOU MEAN WELL BY ME Repeat No. 26 (RED) Play once and segue 2¼ Min.

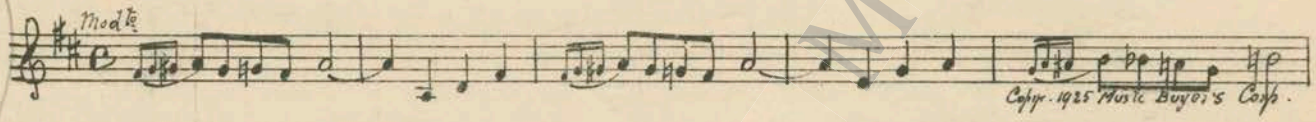
①



Segue

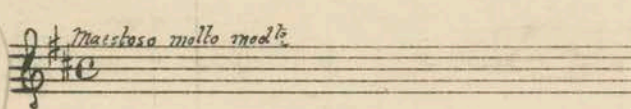
④

SEGUE: Symphonic Color Classic No. 4 (Hauenschild) (DK. GREEN).



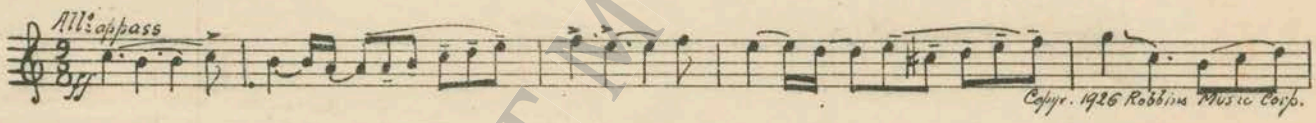
31 (Action) MINISTER GETS UP FROM TABLE Repeat No. 26 (RED) 1 Min.

①



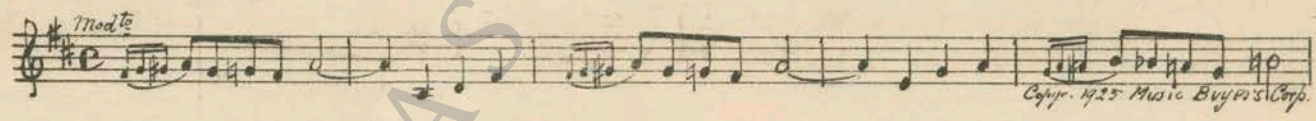
32 (Title) I GUESS YOU AIN'T Dramatic Love Scene (Axt) (LT. BLUE) 1½ Min.

Th. 2



33 (Title) I SHALL SEE THE GOVERNOR Symphonic Color Classic No. 4 (Hauenschild) (DK. GREEN) ... 1 Min.

④



34 (Action) SADIE FEELS MARINE'S ARM Symphonic Color Classic No. 4 (Hauenschild) (WHITE) 3 Min.

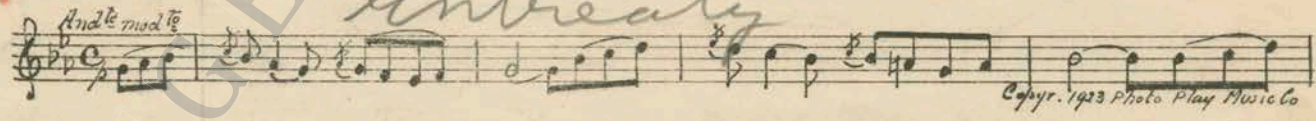
②



Segue ->

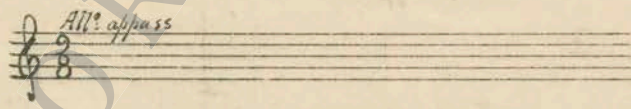
NOTE: Play 16 bars once and segue.

SEGUE: Neath the Passion Vine (Hauenschild).

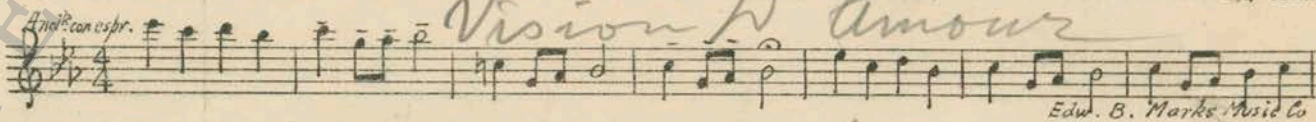


35 (Action) SADIE GETS LETTER Repeat No. 32 (LT. BLUE) 2½ Min.

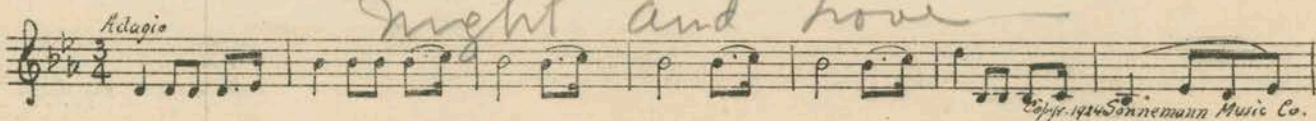
Th. 2



36 (Action) SADIE DRAGGED OFF PORCH BY MARINE.. Temple Bells At Twilight (Ancliffe) 2¼ Min.



37 (Action) TWO MARINES WALK OFF TOGETHER..... At Night from "Desert Suite" (David) 4 Min.



38 (Action) MINISTER WALKS FROM SADIE Repeat No. 26 (RED) 1 Min.

① *Muostoso molto mod^o*

39 (Title) NO SADIE, THIS IS YOUR BEGINNING..... By the Shrine of the Sun (Elliott) 2 Min.

Lento
Samoan Love Song

Copyr. 1925 Bosworth & Co.

40 (Title) YOU DON'T KNOW WHAT I'VE SUFFERED.. Repeat No. 32 (LT. BLUE) 3/4 Min

Th. 2
All^o appass

41 (Title) THE GIRL IS POSSESSED BY THE DEVILS... Rain and Tom-Tom Imitation by Organ, Drummer, or both... 3/4 Min.
42 (Action) AFTER ONE TOM-TOM SCENE Appassionato drammatico (Heymann) 2 Min.

All^o animato
All^o Infernale

Edw. B. Marks Music Co

43 (Action) NOTE: Tom-Tom at opening. MINISTER COMES DOWN STAIRS Pearls of My Soul (Marquardt) 3 Min.

And^{te} religioso
Consolation

Copyr. 1925 Music Buyer's Corp.

44 (Action) MINISTER GETS UP FROM CHAIR Repeat No. 26 (RED) 3/4 Min.

① *Maestoso molto mod^o*

45 (Title) THREE BITTER DAYS Serenata (Tarenghi) 1 1/2 Min.

All^o mod^o
Siva Dance

Copyr. 1914 G. Schirmer.

46 (Action) MAN KICKS FAT WOMAN Film Theme No. 11 (Nicode-Roberts) 1 1/2 Min.

Mod^o con moto

Copyr. 1924 C. Fischer.

47 (Action) LOVER KNOCKS AT SADIE'S DOOR Symphonic Color Classic No. 4 (Hauenschild) (WHITE).... 1 3/4 Min.

② *Mod^o*

Copyr. 1925 Music Buyer's Corp.

48 (Title) I'VE GOT TO GO BACK TO PRISON Repeat No. 32 (LT. BLUE) 2 1/2 Min.

Th. 2
All^o appass

49 (Title) NO SADIE, THIS OLD HYENA Repeat No. 47 (WHITE) 1 1/2 Min.

② *Mod^o*

50 (Action) LOVER OFF FROM SADIE Fading Flowers (Kempinski) 2 Min.

And^{te} espress
Pond Lilies

Copyr. 1927 Photo Play Music Co.

D - Sadie Thompson Lies Down On Bed

51 (Action) SADIE THOMPSON LIES DOWN ON BED.... Symphonic Color Classic No. 4 (Hauenschild) (RED).....1 Min.

1

Maestoso molto mod^{to}
mf
Copyright 1925 Music Buyers Corp.

52 (Action) MINISTER WALKS OUT ON PORCH OF SHACK Sobbing (Baron) 2 1/4 Min.

Slow

All: mod^{to}
Copyright 1927 Irving Berlin

53 (Action) SADIE ON PORCH SITS DOWN ON CHAIR... Adagio Elegiaque (Wieniawski) 1 1/4 Min.

Romance

Adagio
mf
Copyright 1924 G. Schirmer.

54 (Title) I'M SO SLEEPY Repeat No. 51 (RED) 1 Min.

1

Maestoso molto mod^{to}

55 (Action) MINISTER ENTERS SADIE'S BEDROOM... Wind and Tom-Tom by Organ, Drummer, or both..... 1/4 Min.

56 (Action) FADE-OUT TO DAYLIGHT Symphonic Color Classic No. 4 (Hauenschild) (DK. BLUE)..... 1 1/4 Min.

3

All: ma non troppo
Copyright 1925 Music Buyers Corp.

57 (Action) WOMAN IN BLACK COMES DOWN STAIRS. Wabash Blues (Meinken) (Victrola) 1 1/2 Min.

Th. 1

mod^{to}
Copyright 1921 Leo Feist Inc.

58 (Action) MAN TURNS OFF VICTROLA Dram. Tension No. 6 (Zamecnik) 1 1/2 Min.

And^{te}
Copyright 1919 Sam Fox.

59 (Title) I GUESS I'M SORRY FOR EVERYBODY Symphonic Color Classic No. 4 (Hauenschild) (DK. GREEN)..... 1/2 Min.

4

mod^{to}
Copyright 1925 Music Buyers Corp.

60 (Action) LOVER AT GATE WAITING FOR SADIE Repeat No. 47 (WHITE) 1 Min.

2

mod^{to}

61 (Title) I'D WAIT A MILLION YEARS Repeat No. 59 (DK. GREEN) 1 Min.

4

mod^{to}

NOTE: Play in lively tempo.

THE END

Proper rest period is Nos. 27 to 34 inclusive.

NOTE: The repetition of numbers in this cue sheet is simplified by the use of the "LUZ" SYMPHONIC COLOR GUIDE, sold by Music Buyers Corporation, 1520 Broadway, New York City. The color suggested for repetition of numbers designates the Mood or Emotion, and is used as a code for such repetitions.

IMPORTANT NOTE: The Victrola is very important. "Wabash Blues" is original record used. When replaced, a "hot" Fox-Trot must be substituted.

Tacet card or other proper designation should be made for every Victrola imitation in score. The same record should be played throughout. Country of Origin, U. S. A.

Complete orchestrations and single piano parts of each separate number contained hereon, can be purchased from CAMEO MUSIC SERVICE CORPORATION, 315-317 WEST 47TH STREET, NEW YORK CITY.

95: 2292: 1