

188

Thematic Music Cue Sheet

M. J. MINTZ (PATENT) JULY 31, 1923.

FIRST NATIONAL PICTURES presents COLLEEN MOORE

in "SALLY"

From Florenz Ziegfeld's Greatest Musical Comedy

Music compiled by Eugene Conte

A FIRST NATIONAL PICTURE

1 AT SCREENING I Wonder What's Become of Sally (Ager).....2 Min.

Musical notation for 'I Wonder What's Become of Sally' with tempo marking 'Valse Mod.to' and copyright 'Copyright, 1924, by Ager, Yellen & Bornstein'.

2 (Action) SALLY THEME: Sally from "Sally Selection" (Kern).....1 Min.

Musical notation for 'SALLY' theme with tempo marking 'Mod.to' and copyright 'Copyright, 1921, by Kerns, Inc.'.

3 (Action) SALLY LEAVES HOUSE Down Peacock Alley (Hay).....3/4 Min.

Musical notation for 'Down Peacock Alley' with tempo marking 'Mod.to' and copyright 'Copyright by Hawkes & Son'.

4 (Action) SALLY WHISTLES WITH FINGERS Au Moulin (Gillet).....2 1/4 Min.

Musical notation for 'Au Moulin' with tempo marking 'p' and copyright 'Copyright by Carl Fischer'.

5 (Title) THE BEST FIGHT I EVER SAW Repeat Theme No. 2.....1 Min.

Musical notation for 'THE BEST FIGHT I EVER SAW' with tempo marking 'Mod.to'.

6 (Title) I WAS TAKING MY DANCING LESSONS... Whip-poor Will from "Sally Selection" (Kern).....2 Min.

Musical notation for 'Whip-poor Will' with tempo marking 'Mod.to' and copyright 'Copyright, 1921, by Kerns, Inc.'.

7 (Title) SO SALLY WENT TO LIVE Look for the Silver Lining from "Sally Selection" (Kern)....2 1/2 Min.

Musical notation for 'SO SALLY WENT TO LIVE' with tempo marking 'Mod.to' and copyright 'Copyright, 1921, by Kerns, Inc.'.

8 (Title) SEE WHAT I TOLD YOU.....Bygones (Rapee-Axt)1 Min.

And: 1/2 Am 7/8 so
A single staff of music in treble clef with a key signature of one flat and a 7/8 time signature. The tempo is marked 'And: 1/2 Am 7/8 so' and the dynamics are 'p'. The music consists of a series of eighth and sixteenth notes.
Copy. 1923, by Robbins-Engel, Inc.

9 (Action) SALLY TAKES FLOWERS FROM BOX.....Repeat Theme No. 2.....1 Min.

Mod: 1/4
A single staff of music in treble clef with a key signature of one flat and a 4/4 time signature. The tempo is marked 'Mod: 1/4'. The staff is mostly empty, indicating a repeat of a previous theme.

10 (Title) ELM TREE INN.....The Schnitza Komisski (Kern).....3 1/2 Min.

Mod: 6/8
pf
A single staff of music in treble clef with a key signature of one flat and a 6/8 time signature. The tempo is marked 'Mod: 6/8' and the dynamics are 'pf'. The music features a mix of eighth and sixteenth notes.
Copy. 1921, by Harms, Inc.

11 (Action) STREET SCENEPeaches and Cream (Sousa).....2 1/2 Min.

Mod: 6/8
A single staff of music in treble clef with a key signature of one flat and a 6/8 time signature. The tempo is marked 'Mod: 6/8'. The music consists of eighth and sixteenth notes.
Copy. 1915, by Carl Fischer.

12 (Title) WHY DON'T YOU GET A REGULAR DOG.....You Can't Keep A Good Girl Down from "Sally Selection" (Kern) 1 1/2 Min.

M.M. 6/8
mf
A single staff of music in treble clef with a key signature of one flat and a 6/8 time signature. The tempo is marked 'M.M. 6/8' and the dynamics are 'mf'. The music features eighth and sixteenth notes.
Copy. 1921, by Harms, Inc.

13 (Action) SALLY ENTERS MANAGER'S OFFICE.....Spirit of Youth (Dahlquist).....1 Min.

M.M. 6/8
mf
A single staff of music in treble clef with a key signature of one flat and a 6/8 time signature. The tempo is marked 'M.M. 6/8' and the dynamics are 'mf'. The music consists of eighth and sixteenth notes.
Copy. 1919, by Sam Fox Pub. Co.

14 (Title) IN THE NIGHT TIME WHEN LIGHTS.....When Lights Are Low (Koehler).....1 Min.

Valse
p
A single staff of music in treble clef with a key signature of one flat and a 3/4 time signature. The tempo is marked 'Valse' and the dynamics are 'p'. The music features eighth and sixteenth notes.
Copy. 1914, by Leo Feist

15 (Action) DUKE WITH TRAY OF DISHES.....Repeat No. 10 "Schnitza Komisski".....1/2 Min.

Mod: 1/4
A single staff of music in treble clef with a key signature of one flat and a 4/4 time signature. The tempo is marked 'Mod: 1/4'. The staff is mostly empty, indicating a repeat of a previous theme.

NOTE: Catch crash of falling dishes.

16 (Title) DETERMINED NOT TO GO HOME.....Repeat Theme No. 2.....2 1/2 Min.

Mod: 1/4
A single staff of music in treble clef with a key signature of one flat and a 4/4 time signature. The tempo is marked 'Mod: 1/4'. The staff is mostly empty, indicating a repeat of a previous theme.

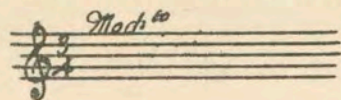
17 (Action) SALLY STARTS TO DANCE.....Repeat No. 12 "You Can't Keep A Good Girl Down".....2 Min.

M.M. 6/8
A single staff of music in treble clef with a key signature of one flat and a 6/8 time signature. The tempo is marked 'M.M. 6/8'. The staff is mostly empty, indicating a repeat of a previous theme.

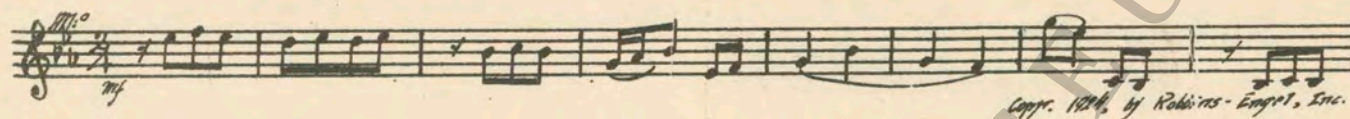
18 (Title) YOUR DUTIES ARE TO WASH.....A Little Dance (Beaumont).....2 Min.

Gazette
A single staff of music in treble clef with a key signature of one flat and a 2/4 time signature. The tempo is marked 'Gazette'. The music consists of eighth and sixteenth notes.
Copy. 1925, by G. Schirmer

19 (Title) ROSE, SWEETHEART, YOU'RE LATE.....Repeat No. 10 "Schnitza Komisski".....1½ Min.

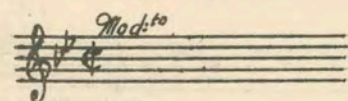


20 (Action) SALLY AND DUKE RUN OUT OF KITCHEN..Happy Go Lucky (Kaufman).....1½ Min.

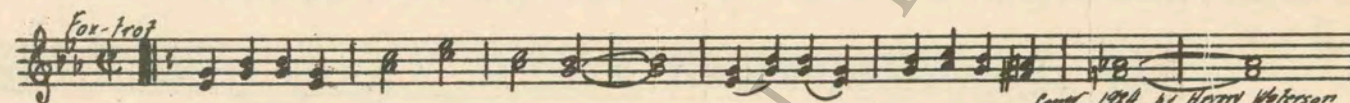


Copyr. 1924, by Robbins-Engel, Inc.

21 (Title) HOW DO YOU DO, MISS.....Repeat Theme No. 2.....1 Min



22 (Action) POPPS LEADS SALLY BACK TO KITCHEN...Blue-Eyed Sally (Robinson).....2 Min.



Copyr. 1924, by Henry Waterson

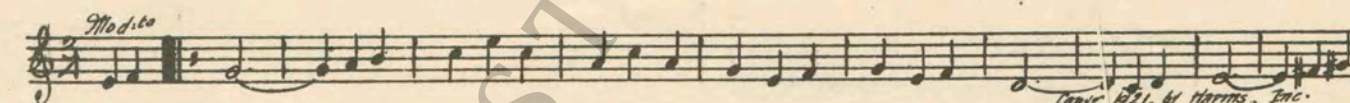
23 (Action) CLOSE-UP OF WAITER WITH BOTTLE OF WINESally Selection (Kern).....½ Min.



Copyr. 1925, by Harms, Inc.

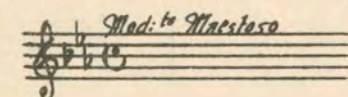
NOTE: Repeat first 4 measures.

24 (Action) FADE-IN SALLY AND DUKE.....The Schnitza Komisski (Kern).....1½ Min.



Copyr. 1925, by Harms, Inc.

25 (Title) THE ELM TREE INN IS A.....Repeat No. 23 "Sally Selection".....¾ Min



26 (Title) IT WOULD SERVE HIM RIGHT.....A Remembered Kiss (Vannah).....1½ Min.



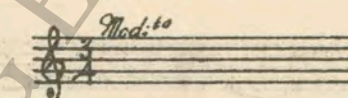
Copyr. 1925, by M. Baron

27 (Title) DISHES TO THE RIGHT OF HER.....Parade of the Wooden Soldiers (Jessel).....1 Min.



Copyr. 1926, by Edw. B. Starks

28 (Action) FADE-BACK TO SALLY.....Repeat No. 24 "Schnitza Komisski".....1 Min

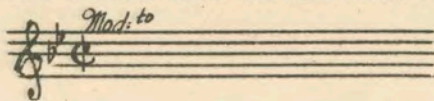


29 (Title) I'M NOT GOING JUST YET.....Somebody Loves Me (Layton).....1 Min.

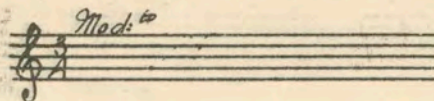


Copyr. 1927, by Harms, Inc.

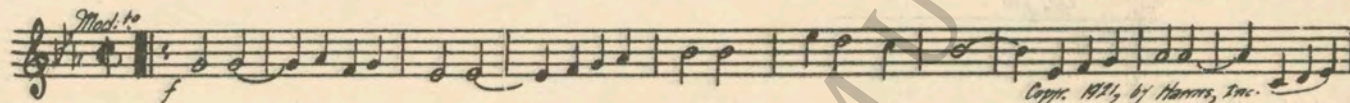
30 (Action) BLAIR PULLS OUT REVOLVER..... Repeat Theme No. 2..... 1½ Min.



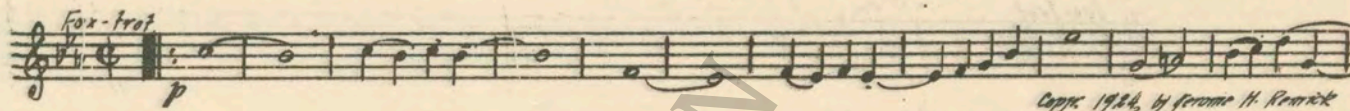
31 (Action) FADE-IN DUKE WASHING DISHES..... Repeat No. 24 "Schnitza Komisski"..... ½ Min



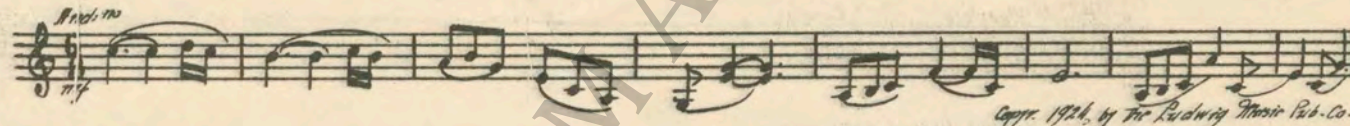
32 (Action) DUKE COMES TO SALLY..... Look for the Silver Lining from "Sally Selection" (Kern)..... ½ Min.



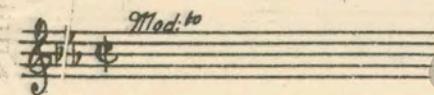
33 (Action) BLAIR LEAVES I Can't Stop Babying You (Santly)..... ¾ Min.



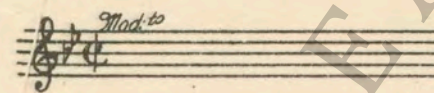
34 (Title) MEANWHILE Wings of Love (Fuzy)..... 1½ Min.



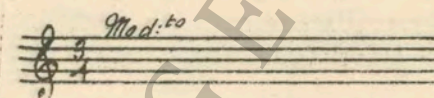
35 (Title) IT WAS WORK..... Repeat No. 32 "Look for the Silver Lining" (Violin Solo)..... ½ Min.



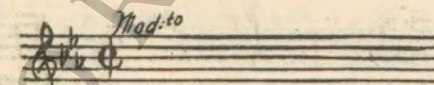
36 (Action) BLAIR ENTERS CAFE..... Repeat Theme No. 2..... 3 Min.



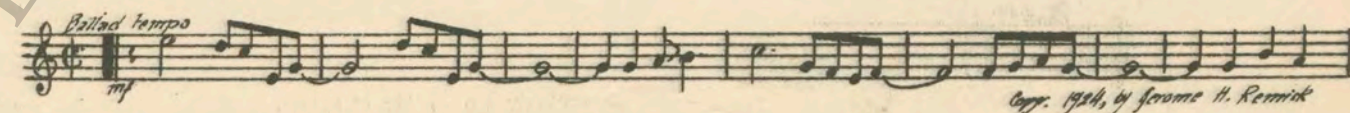
37 (Action) DUKE ENTERS—POPPI STOPS HIM..... Repeat No. 24 "Schnitza Komisski"..... 2 Min.



38 (Title) WHY NOT GIVE THE KID A CHANCE..... Repeat No. 32 "Look for the Silver Lining"..... 1 Min.

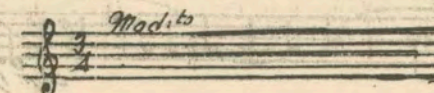


39 (Action) SALLY RUNS BACK INTO KITCHEN..... Why Couldn't It Be Poor Little Me (Jones)..... ½ Min.

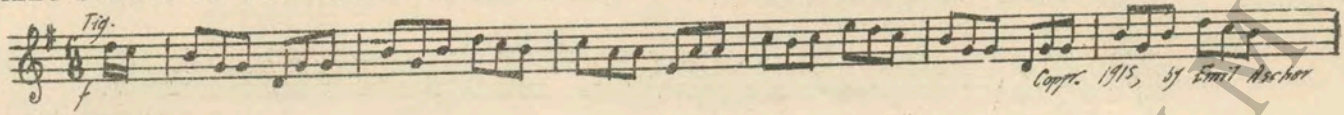


NOTE: Play as a ballad.

40 (Action) LADDER AT TREE..... Repeat No. 24 "Schnitza Komisski"..... 1½ Min.



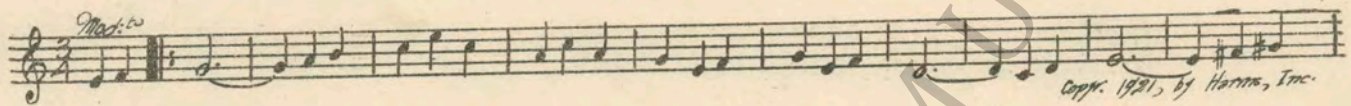
41 (Action) SALLY STARTS TO DANCE..... Irish Washerwoman (Ascher)..... 1½ Min.



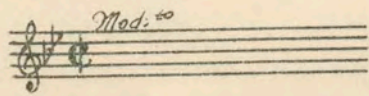
42 (Title) NOW A RUSSIAN DANCE..... Danse russe Trepak (Tschaikowsky)..... 1 Min.



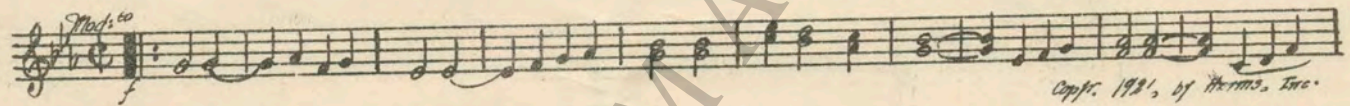
43 (Action) END OF DANCE..... The Schnitz Komisski (Kern)..... 1 Min.



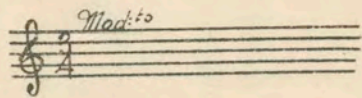
44 (Action) SALLY GOES BACK INTO KITCHEN..... Repeat Theme No. 2..... ½ Min.



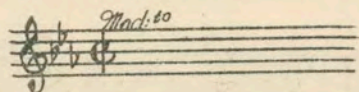
45 (Action) SALLY AND MAN ENTER SMALL ROOM..... Look For the Silver Lining from "Sally Selection" (Kern)..... 2 Min.



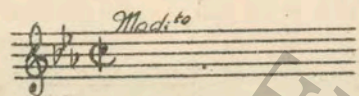
46 (Action) DUKE RUNS WITH BILL..... Repeat No. 43 "Schnitz Komisski"..... 2 Min.



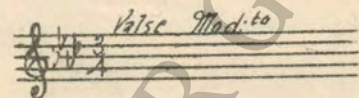
47 (Title) OH! SALLY YOU'RE WONDERFUL..... Repeat No. 45 "Look for the Silver Lining"..... 1½ Min.



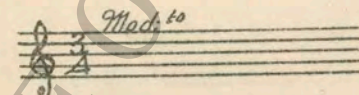
48 (Action) SALLY RUNS INTO DINING ROOM..... Repeat Theme No. 2..... 1 Min.



49 (Title) LOST, STRAYED, STOLEN..... Repeat No. 1 "I Wonder What's Become of Sally"..... 2 Min.

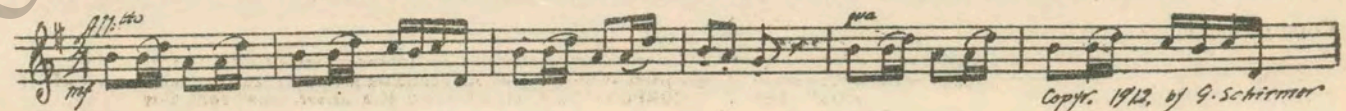


50 (Title) THERE ARE TWO THINGS..... Repeat No. 43 "Schnitz Komisski"..... 2 Min.



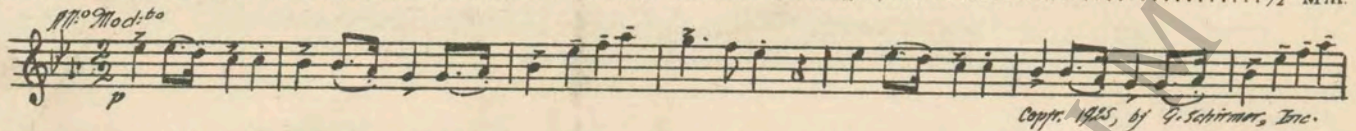
51 (Action) SALLY APPEARS IN COSTUME..... Repeat No. 45 "Look for the Silver Lining"..... 3 Min.

52 (Action) FADE-BACK TO LAWN FETE..... Cosatschoque (Dargomijsky)..... 2½ Min.



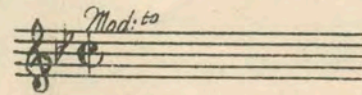
NOTE: Start from Allegretto.

53 (Action) END OF DANCE PEOPLE APPLAUD.....Country Gardens (Grainger).....1/2 Min.

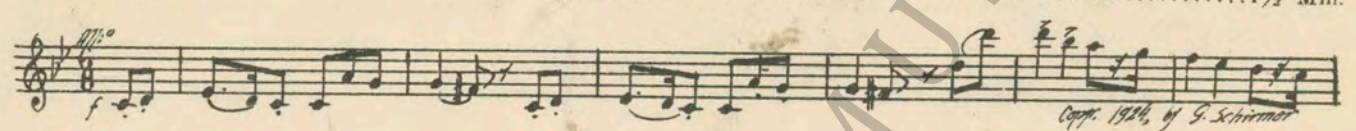


Copyright 1925, by G. Schirmer, Inc.

54 (Title) YOU TWO NEED NO INTRODUCTION.....Repeat Theme No. 2.....2 1/2 Min.

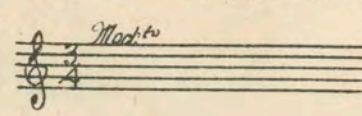


55 (Action) FADE-IN TAXISoaring (Schumann)1 1/2 Min.

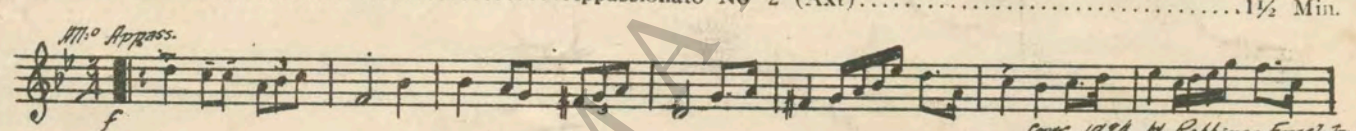


Copyright 1924, by G. Schirmer

56 (Title) I THINK THE DUKE.....Repeat No. 43 "Schnitza Komisski".....1/2 Min.

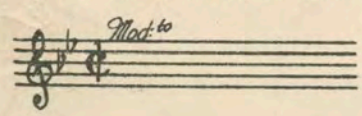


57 (Title) WHAT OF IT.....Appassionato No 2 (Axt).....1 1/2 Min.

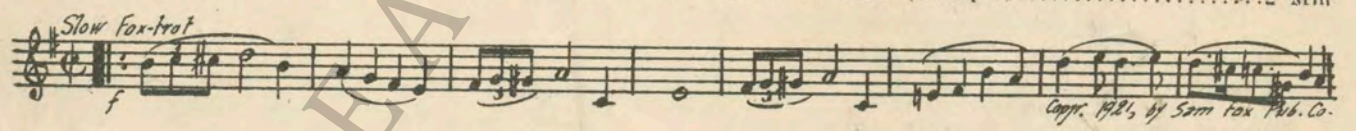


Copyright 1926, by Robbins-Engel, Inc.

58 (Title) PLEASE, PLEASE AFTER.....Repeat Theme No. 2.....2 Min.

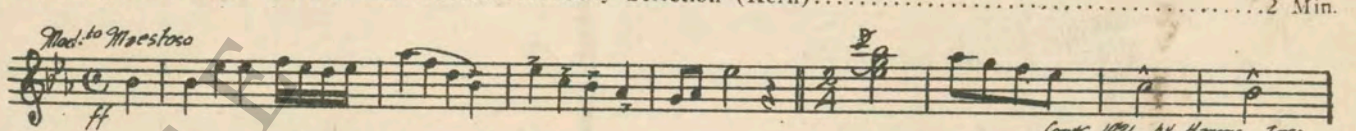


59 (Title) THE CLOUDS SEEMED PRETTY DARK.....Sally, Won't You Come Back (Stamper).....2 Min



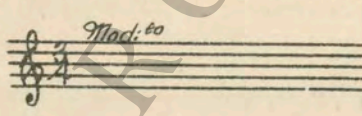
Copyright 1925, by Sam Fox Pub. Co.

60 (Title) OPPORTUNITY HAD KNOCKED.....Sally Selection (Kern).....2 Min.

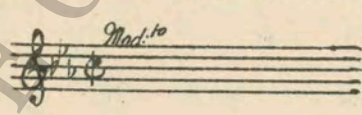


Copyright 1921, by Harms, Inc.

61 (Action) DUKE ENTERS DRESSING ROOM.....Repeat No. 43 "Schnitza Komisski".....1 Min.



62 (Action) CLOSE-UP OF LETTER.....Repeat No. 45 "Look for the Silver Lining".....2 Min.



63 (Action) DUKE LEAVES ROOM.....Repeat Theme No. 2.....1 1/2 Min.

Country of Origin, U. S. A.

THE END

Complete Orchestrations and single parts of all compositions contained herein can be purchased from CAMEO MUSIC SERVICE CORPORATION, 112-118 West 44th Street, New York City

95:2294:1