

454

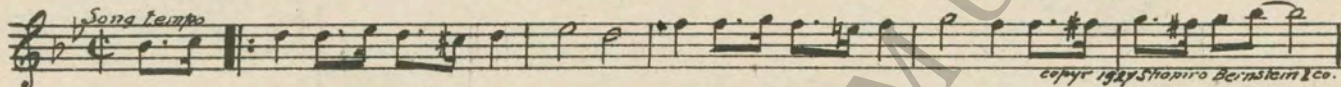


M. J. MINTZ (PATENT)
JULY 31, 1923.

WILLIAM FOX FEATURE PRODUCTION OLIVE BORDEN in "THE SECRET STUDIO"

Compiled by Michael P. Krueger
The timing is based on speed of 12 minutes per reel

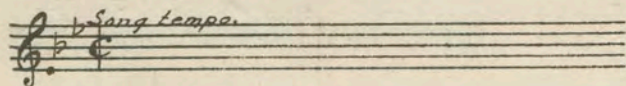
1 AT SCREENING JOE AND ELSIE THEME: Side By Side (Woods) 3/4 Min.



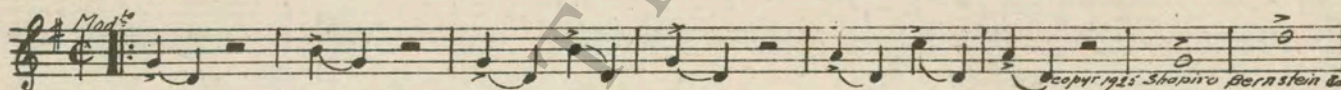
2 (Title) JUST ACROSS THE RIVER Trail of Dreams (Swan) 1 1/2 Min.



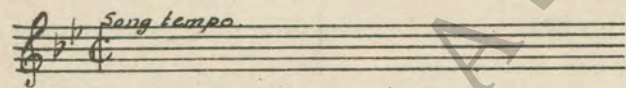
3 (Title) IOE PIPP, A PLUMBER Repeat Joe and Elsie Theme No. 1 1 Min.



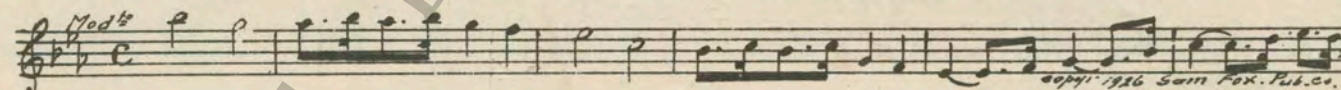
4 (Title) ROSEMARY MORTON Collegiate (Jaffe) 1 1/2 Min.



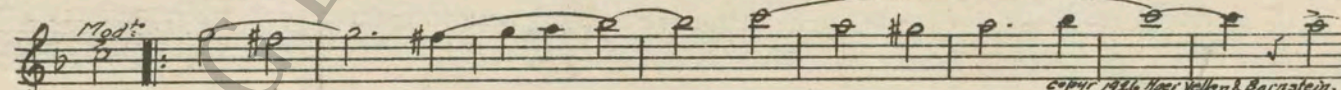
5 (Title) MOTHER NEEDS ME Repeat Joe and Elsie Theme No. 1 3/4 Min.



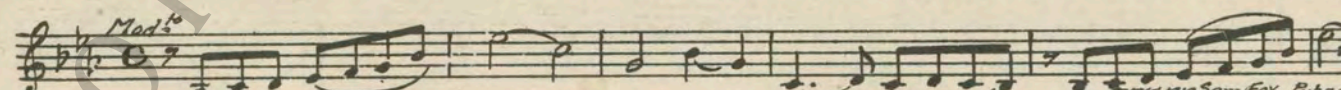
6 (Action) MOTHER EMBRACES ROSEMARY Rosemary (Reynard) 2 Min.



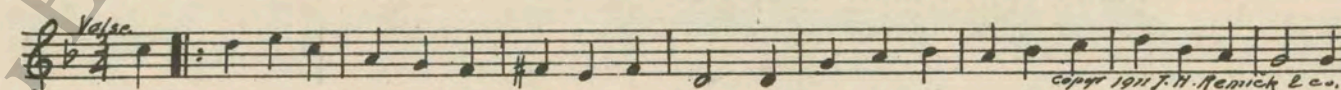
7 (Action) FATHER TAKES HAT OUT OF HAT BOX In Your Green Hat (Ager) 1 1/2 Min.



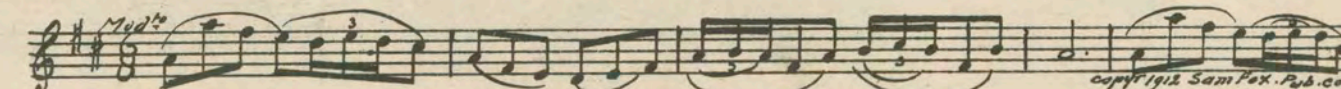
8 (Title) NOW, DARLINGS, I HAVE Devotion (Deppen) 1 1/2 Min.



9 (Title) ARMED WITH A WANT AD New Yorkers (Cohan) 1/2 Min.



10 (Title) PERSEVERANCE Sparklets (Miles) 3 Min.



11 (Action) CHANGE OF SCENE TO ALLEYMysterious Nights (Berg) ½ Min.

Valse lente
 copyr 1919 Belwin Inc.

12 (Title) LARRY KANEBohemiana (Smith) 3¾ Min.

All. giocoso
 copyr 1909 Carl Fischer Inc.

13 (Title) BUSINESS REASONS WERESLOAN AND ROSEMARY THEME: What Does It Matter?
(Berlin) 1¾ Min.

Waltz lente
 copyr 1927 Irving Berlin Inc.

14 (Title) THANKS FOR THE ADVICERepeat No. 12 "Bohemiana" 1 Min.

All. giocoso

15 (Action) FADE-IN TO JOE AND ELSIE AT PIANO.....Love Me and the World Is Mine (Ball) ¾ Min.

Fndte
 copyr 1916 M. Witmark & sons.

16 (Title) DON'T GET ME SOREThe Joker (Srawlev) 1 Min.

Med.º
 copyr 1926 Geo. H. Sanders Co.

17 (Action) CHANGE OF SCENE TO ROSEMARY POSING.Valse Charmé (Miles) 1¾ Min.

Valse Med.º
 copyr 1926 Sam Fox Pub. Co.

18 (Action) DOORBELL RINGSPlay half of chorus of "Black Bottom" ½ Min.

19 (Action) ROSEMARY OPENS DOORRepeat Sloan and Rosemary Theme No. 13 1 Min.

Waltz Lente.

20 (Title) SORRY, OLD MANIn the Dell (Frommel) 1¾ Min.

Med.º
 copyr 1921 Photo Play Music Co.

21 (Action) FADE-IN TO FATHER AND MOTHERWings of Joy (Van Norman) 2¼ Min.

Animata
 copyr 1922 Sam Fox Pub. Co.

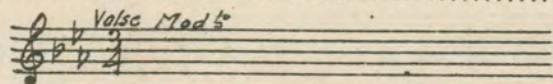
22 (Action) NOTE: Catch effect of auto horns.
ROSEMARY AND SLOAN SEATED IN
ROCKERS ON PORCHRepeat Sloan and Rosemary Theme No. 13 1½ Min.

Waltz lente

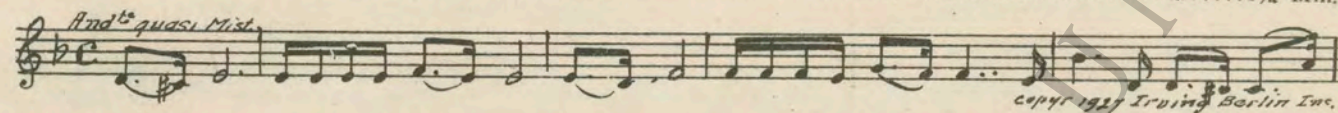
23 (Title) ROSEMARY, I HAVE SOMETHING
SERIOUS TO ASK YOURapture (Zamecnik) 1½ Min.

Con Anima
 copyr 1928 Sam Fox Pub. Co.

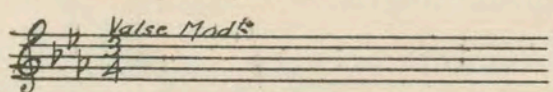
24 (Title) WHEN AT LASTRepeat No. 17 "Valse Charme"1¼ Min.



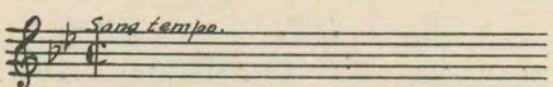
25 (Title) I WANT TO TELL YOUDramatic Suspense (Vrionides)1¼ Min.



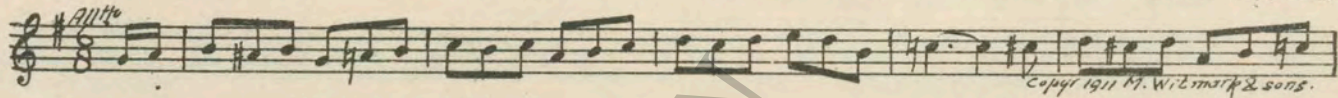
26 (Title) AND YOU THOUGHTRepeat No. 17 "Valse Charme"1¼ Min.



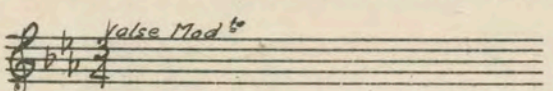
27 (Action) FADE-IN TO JOE AND ELSIERepeat Joe and Elsie Theme No. 1½ Min.



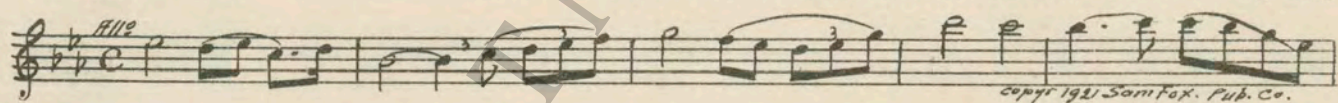
28 (Title) JOE'S OUTSIDEA Game of Tag (Trinkaus)2¼ Min.



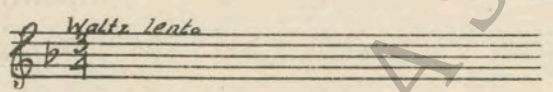
29 (Action) FADE-IN TO ROSEMARYRepeat No. 17 "Valse Charme"1¾ Min.



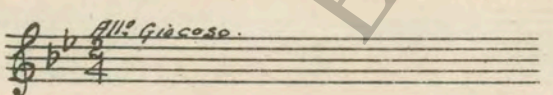
30 (Action) INSERT OF LETTERJoy (Zamecnik)1½ Min.



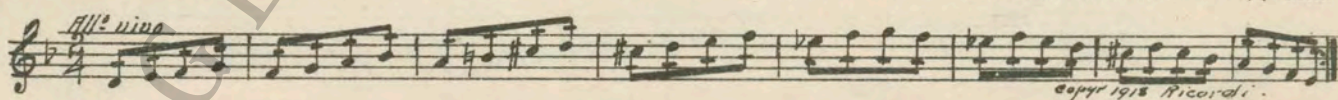
31 (Action) ROSEMARY ENTERS HOUSERepeat Sloan and Rosemary Theme No. 132 Min.



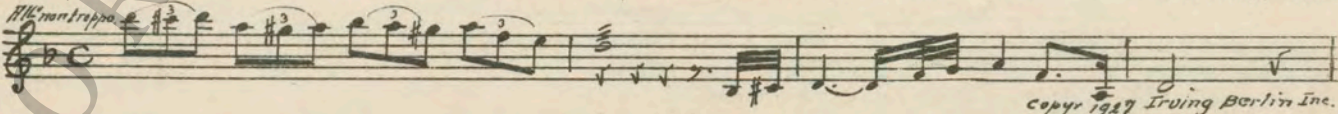
32 (Title) A DISCREET INVITATIONRepeat No. 12 "Bohemiana"2½ Min.



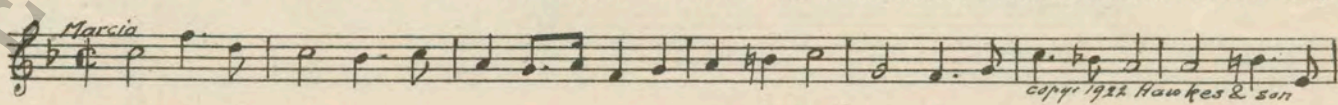
33 (Action) PORTRAIT IS SHOWNFuga (Gabriel Marie)¾ Min.



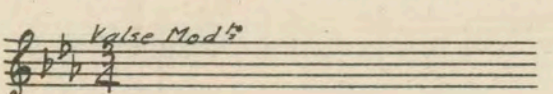
34 (Action) SLOAN RUSHES TO DESTROY PORTRAIT...Defiance (Kempinski)¾ Min.



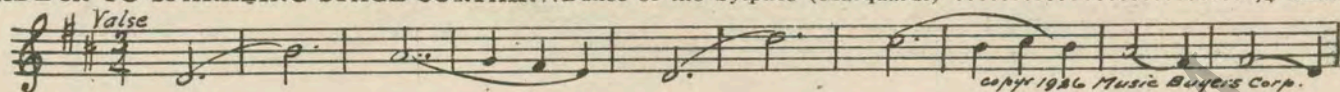
35 (Title) THAT NIGHT AT THE ARTISTS'Grand March (Finck)1 Min.



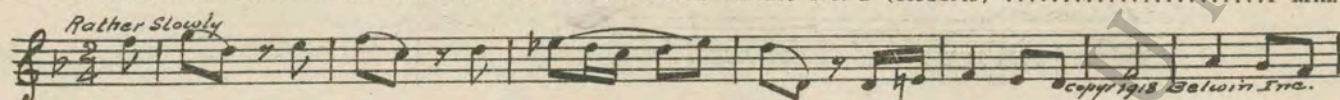
36 (Title) —AND I TAKE PLEASURE INRepeat No. 17 "Valse Charme"1¾ Min.



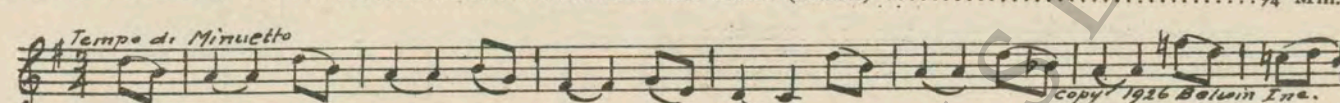
37 (Action) FADE-IN TO SPARKLING STAGE CURTAIN..Dance of the Sylphes (Marquardt)1¼ Min.



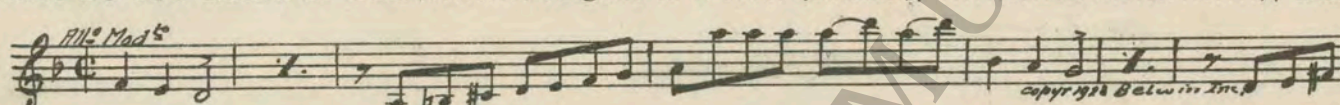
38 (Title) A LATE ARRIVALCharacteristic Theme No. 2 (Roberts)1 Min.



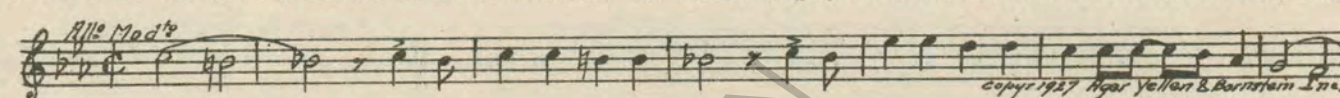
39 (Action) SECOND TABLEAUChiffons and Laces (Baron)¾ Min.



40 (Title) WHAT DO YOU THINK OF OURAgitato In D Minor (Boehnlein)¾ Min.



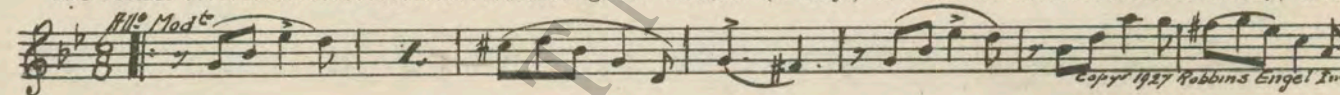
41 (Action) CHANGE OF SCENE TO BANDAin't She Sweet? (Ager)2¾ Min.



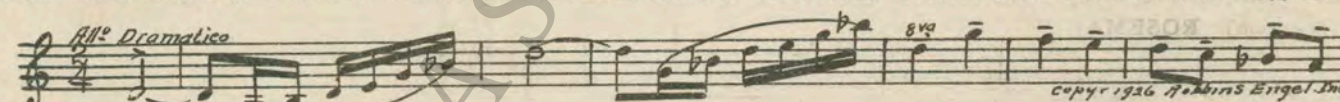
42 (Action) KANE SEEN IN HALLWAYDramatic Scene and Agitato (Axt)2½ Min.
NOTE: Start at beginning; music stops—when band continues to play, go back to beginning.



43 (Action) CHANGE OF SCENE TO FATHER AND MOTHERAgitato Pathetic (Kilenyi)2¼ Min.



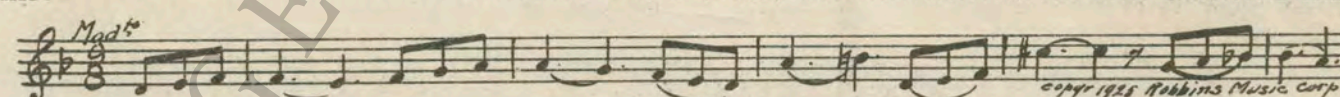
44 (Action) ROSEMARY ENTERSDram. Andante No. 3 (Axt)2¾ Min.



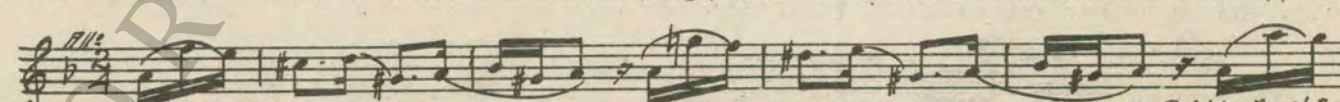
45 (Action) ROSEMARY LEAVESA Curious Story (Frommel)2½ Min.



46 (Action) FADE-IN TO KANEIn Despair (Berge)2 Min.



47 (Title) WHAT DO I CARE ABOUT YOUAstir (Berge)1¼ Min.



48 (Action) JOE, THE PLUMBER, GETS HIT WITH MATTRESSMarche Grotesque (Sinding)1¾ Min.



49 (Title) WILL YOU FORGIVE MERepeat Sloan and Rosemary Theme No. 13¾ Min.

Printed in U. S. A.

THE END

Complete orchestrations and single piano parts of each separate number contained hereon, can be purchased from CAMEO MUSIC SERVICE CORPORATION, 315-317 WEST 47TH STREET, NEW YORK CITY.

95:2310:1