

Thurs. Sept 8/27

Thematic Music Cue Sheet

M.J. MINTZ (PATENT) JULY 31, 1923.

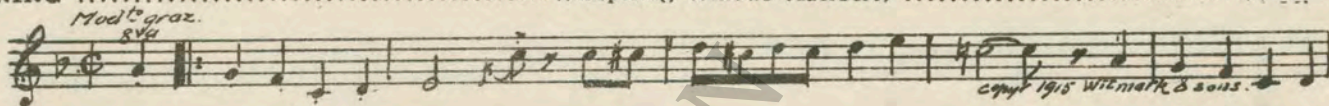


ADOLPH ZUKOR and JESSE L. LASKY present ADOLPHE MENJOU in "SERVICE FOR LADIES"

Directed by Harry D'Arrast
Story by Ernest Vajda
Screen play by Chandler Sprague
Supervision of Benjamin Glazer
B. P. Schulberg, Associate Producer
Compiled by James C. Bradford
Footage 6170 feet

A Paramount Picture

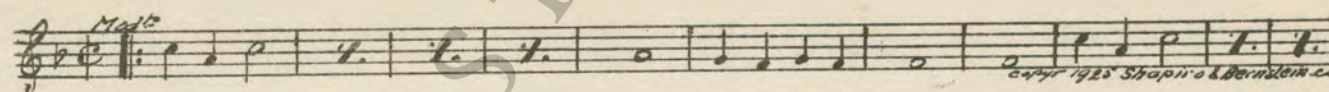
- 1 AT SCREENING Whispering Willows (Herbert) 3/4 Min.



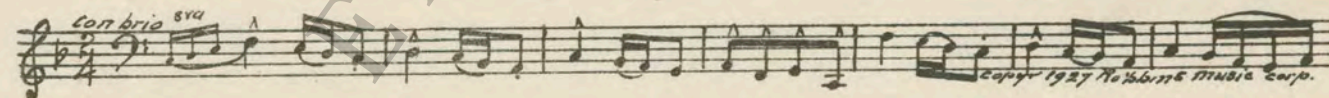
- 2 (Title) A LITTLE PARIS SUNSHINE..... La Mouche du Coche (Mouton)..... 2 1/4 Min.



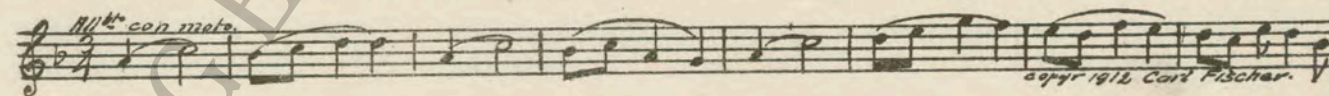
- 3 (Title) WHO IS THAT GIRL?..... Oh Boy, What a Girl (Green)..... 1/2 Min.



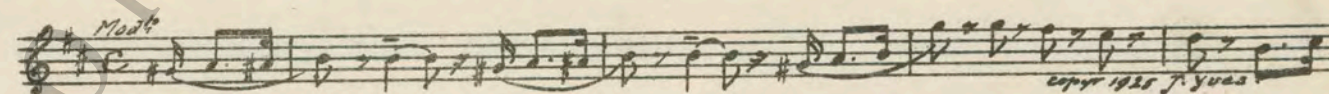
- 4 (Action) NOTE: Play very quietly. WAITERS CLEANING SILVERWARE The Jesters (Carbonara) 3/4 Min.



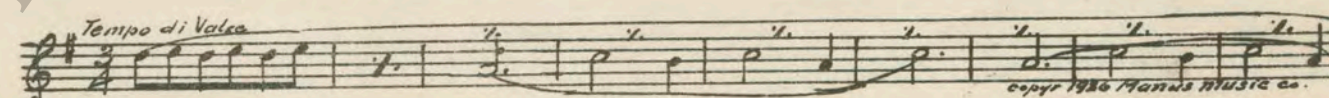
- 5 (Title) I'VE JUST MET THE MOST WONDERFUL GIRL Serenade (Chaminade) 3/4 Min.



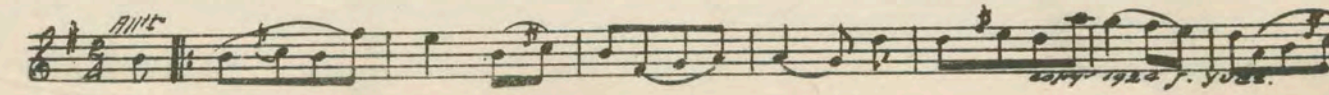
- 6 (Action) WAITERS LINED UP FOR INSPECTION..... Les Chevaliers du Guet (Mouton) 1/2 Min.



- 7 (Action) INSERT-RESERVATION CARD Sounds of the Evening (Gillet)..... 3/4 Min.



- 8 (Title) SHE'S COMING AT EIGHT O'CLOCK..... Avril Frileux (Mouton) 1/2 Min.



9 (Action) ALBERT ENTERS HIS OFFICE.....The Prisoner's Song (Massey)½ Min.

Valse lamento
Musical notation for 'The Prisoner's Song' in 3/4 time, featuring a melodic line with a key signature of one flat. Copyright 1928 Shapiro & Bernstein Co.

10 (Action) ENTRANCE TO DINING ROOM En Carriole (Gabriel Marie)2¾ Min.

Con spirito
Musical notation for 'En Carriole' in 2/4 time, featuring a rhythmic melody. Copyright 1924 Chapellier.

11 (Action) OLD LADY AND ESCORT APPEAR..... Vous dites Marquise? (Gillet)¼ Min.

All.^o
Musical notation for 'Vous dites Marquise?' in 3/4 time, featuring a simple melodic line. Copyright 1901 Paul Decourcalle.

12 (Action) ELIZABETH AND FRIENDS APPEAR..... It Must Be Love (Archer)1½ Min.

Mod.^o
Musical notation for 'It Must Be Love' in 3/4 time, featuring a melodic line with a key signature of one flat. Copyright 1926 Leo Feist Inc.

13 (Title) THE PORTER SENT IN THESE TICKETS.... Babillage (Gillet)¾ Min.

All.^o
Musical notation for 'Babillage' in 3/4 time, featuring a melodic line. Copyright Carl Fischer.

14 (Action) RAILROAD STATION Comedy Allegro (Ancliffe)1¾ Min.

All.^o
Musical notation for 'Comedy Allegro' in 2/4 time, featuring a rhythmic melody. Copyright 1926 Bosworth & Co.

15 (Action) ELIZABETH AND FATHER ENTER DINER— SIT AT TABLE 2nd Arabesque (Debussy)2¾ Min.

All.^o scherz.^o
Musical notation for '2nd Arabesque' in 3/4 time, featuring a complex rhythmic melody. Copyright 1918 Durand & Co.

16 (Action) PORTER PULLING UP SHADES..... Andante from "William Tell" ((Rossini).....1 Min.

And.^{te}
Musical notation for 'Andante from William Tell' in 3/4 time, featuring a melodic line with a key signature of one flat. Copyright 1912 Carl Fischer.

17 (Action) ALBERT AWAKENS—EXCITEDLY LEAVES CAR Intermezzo Perpetual (Lowitz)½ Min.

Con moto
Musical notation for 'Intermezzo Perpetual' in 2/4 time, featuring a rhythmic melody. Copyright 1927 G. Schirmer Inc.

18 (Action) HE STARTS TO WALK..... The Mosquito's Parade (Whitney)½ Min.

All.^o Marc.^h
Musical notation for 'The Mosquito's Parade' in 3/4 time, featuring a rhythmic melody. Copyright 1909 W. W. Norton & Sons.

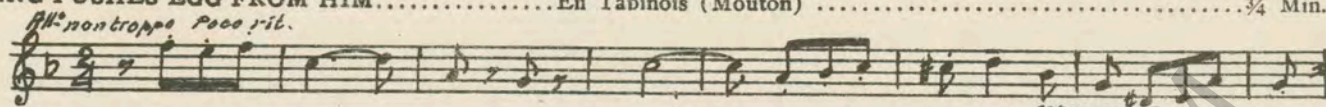
19 (Title) AT THE MURREN HOTEL..... Told in Yodels (Van Dyke)2 Min.

Waltz
Musical notation for 'Told in Yodels' in 3/4 time, featuring a melodic line with a key signature of one flat. Copyright 1923 Baldwin Inc.

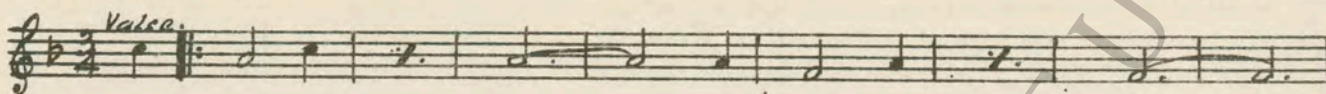
20 (Title) WE ARE NOT SUPPOSED TO MENTION IT.. Le Bijou Perdu (Mouton).....½ Min.

Mod.^o
Musical notation for 'Le Bijou Perdu' in 3/4 time, featuring a melodic line with a key signature of one flat. Copyright 1925 J. Vuob.

21 (Action) KING PUSHES EGG FROM HIM.....En Tadois (Mouton)¾ Min.



22 (Title) IT'S OUR FRIEND PICKLESTHEME: It's You (Greenberg)1½ Min.



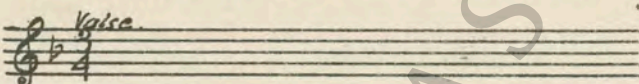
23 (Title) WOULD YOU LIKE TO JOIN THE BOB SLED PARTYJoyeuse Alerté (Fosse)1½ Min.



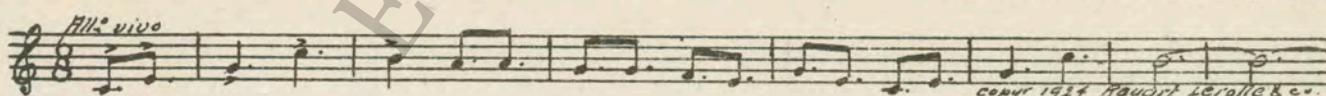
24 (Action) BOB SLED ON TOP OF HILL.....Aeroplane Galop (Lamothe)1 Min.



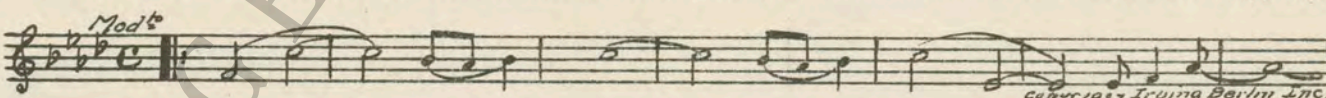
25 (Action) ELIZABETH AND ALBERT IN SLEIGH.....NOTE: Produce coasting effects ad lib; roll on Timpany for upset. Repeat Theme No. 22.....½ Min.



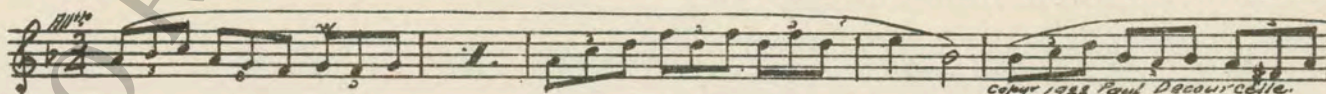
26 (Title) ALBERT HAD BEEN GONE.....Jeux (Turina)½ Min.



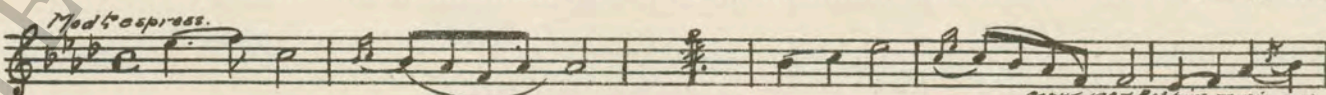
27 (Action) FLASH-BACK TO INNBlue Skies (Berlin)1¼ Min.



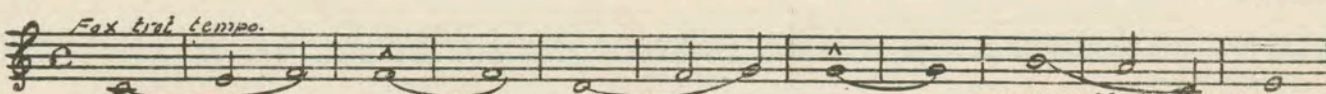
28 (Action) ALBERT IN BOUDOIRDoux Murmure (Gillet)½ Min.



29 (Title) IN TROUBLESonnet (Bowers)1½ Min.



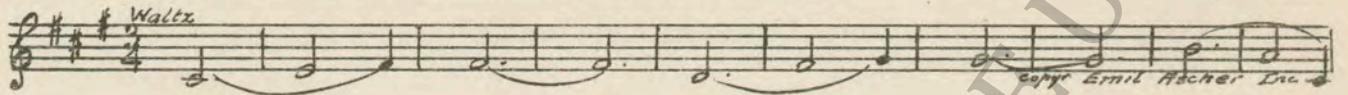
30 (Action) FLASH TO CARNIVAL SKATING.....The Skaters (Hand)2½ Min.



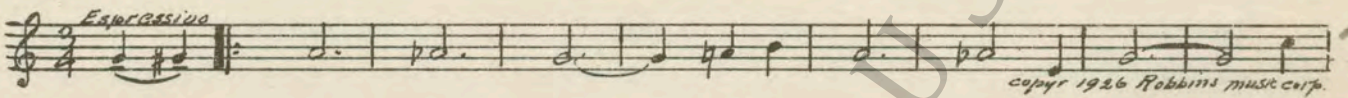
31 (Title) FALSE COLORS. ALBERTSarcasm (Kempinski) 1/2 Min.



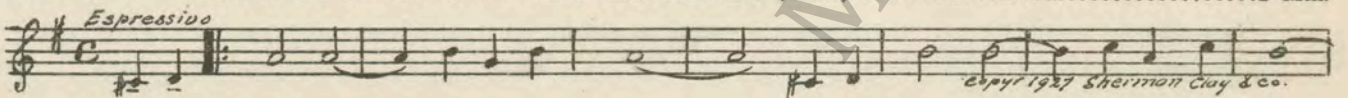
32 (Action) FLASH-BACK TO SKATERSThe Skaters (Waldteufel) 1 Min.



33 (Action) ALONE ON BENCHTrail of Dreams (Swan) 2 Min.



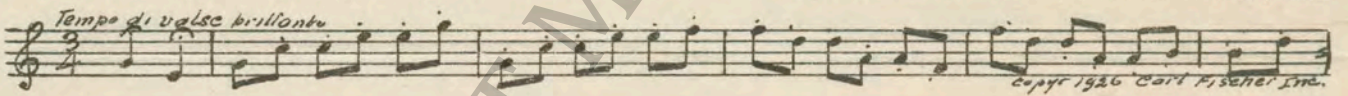
34 (Title) NOTE: Play "PP" con sordini strings only, very sentimental. ALBERT, I'VE KNOWN YOU.....Do You Love Me? (Wolf) 2 Min.



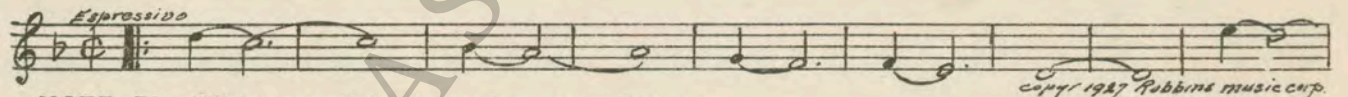
35 (Title) NOTE: Play "PP" con sordini string only, very sentimental. MORNINGYou Said Good-Night, But You Meant Good-Bye (Solman).... 3/4 Min.



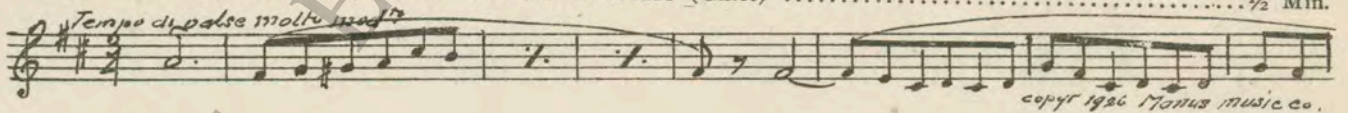
36 (Title) NOTE: Play "PP" con sordini strings only, very sentimental. PARIS AGAINOn a Woodland Glade (Ray) 1 1/4 Min.



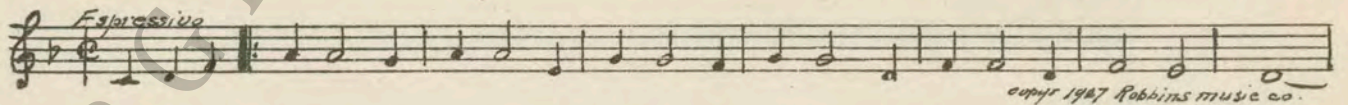
37 (Action) ALBERT ENTERS OFFICECalling (Golden) 3/4 Min.



38 (Action) NOTE: Play "PP" con sordini strings only, very sentimental. FLASH TO RESTAURANT-ALBERT AT CHAFING DISHAmoureux (Gillet) 1/2 Min.



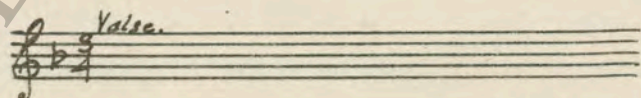
39 (Action) ALBERT SEES ELIZABETHI'll Always Remember You (Greer) 1 1/2 Min.



40 (Action) ELIZABETH ENTERS HIS OFFICEWhat Does It Matter? (Berlin) 1/2 Min.



41 (Action) ALBERT SEES ELIZABETHRepeat Theme No. 22..... 1 Min.



Country of Origin, U. S. A.

THE END

Complete orchestrations and single piano parts of each separate number contained hereon, can be purchased from CAMEO MUSIC SERVICE CORPORATION, 315-317 WEST 47TH STREET, NEW YORK CITY.

95:2312:1