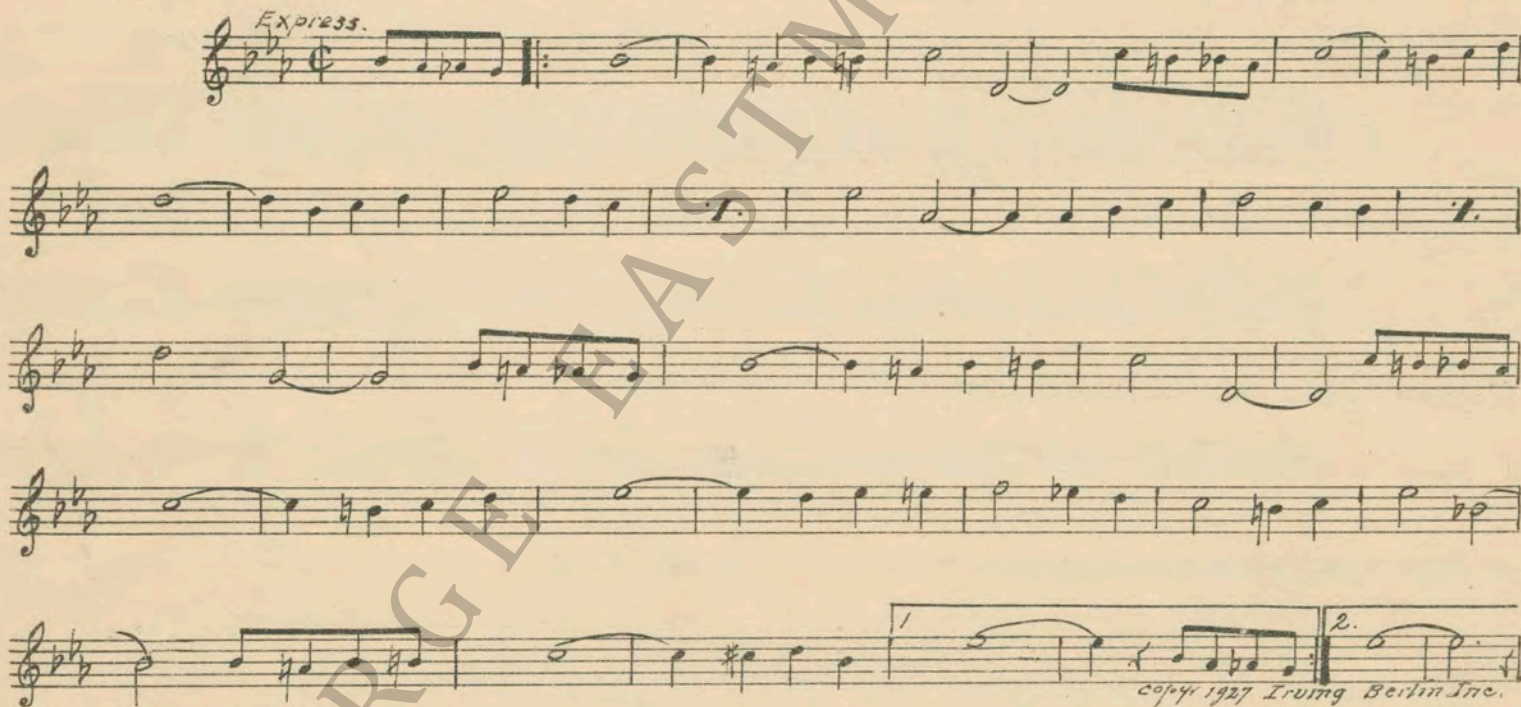


Richard A. Rowland
 presents
"THE SHEPHERD OF THE HILLS"
 by
HAROLD BELL WRIGHT
 with
MOLLY O'DAY
 Alec Francis, John Boles and Mathew Betz
 Adaptation and Continuity by Marion Jackson
 Directed by Al Rogell
 Produced by Charles R. Rogers
 Compiled by James C. Bradford
A First National Picture

1. AT SCREENING Prelude from La Sultane Morte (Mouton) 2 Min.



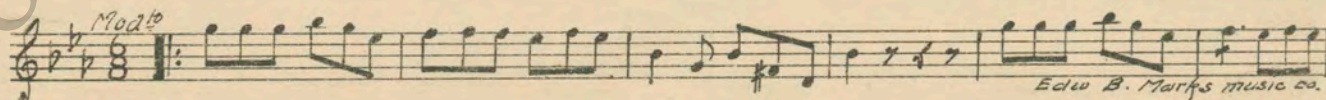
2 (Title) THIS IS THE STORY OF A TRAVELER..... SHEPHERD THEME: Shepherd of the Hills (Nicholls).... 1¼ Min.



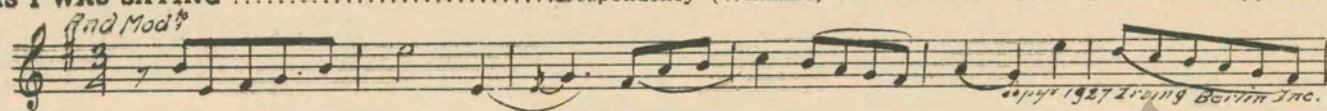
3 (Action) HE STOPS AND SPEAKS TO MATHEW AT GATE A tes Genoux (Gillet) 2¾ Min.



4 (Action) FAMILY SIT AT TABLE Humoresque (Mikulicz) 1½ Min.



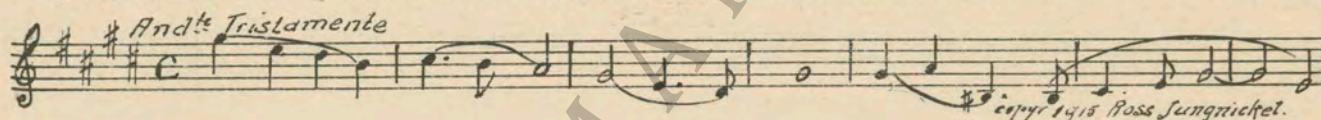
5 (Title) AS I WAS SAYINGDespondency (Williams)1¼ Min.



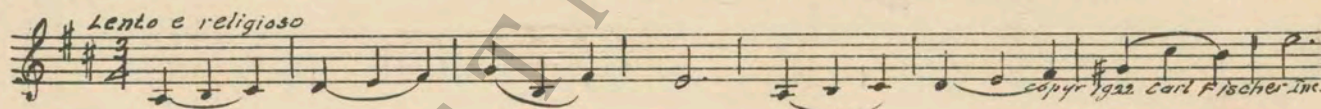
6 (Action) SAMMY AND MATT OUTSIDELOVE THEME: Your Love Is All (Zamecnik)1¾ Min.



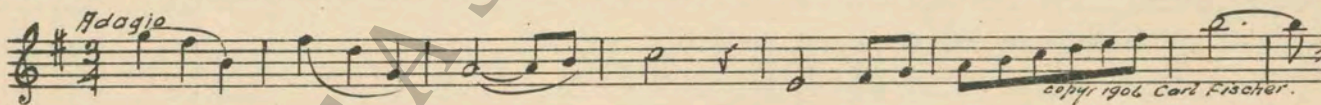
7 (Action) SHEPHERD AND MATHEW OUTSIDE CABINPoem Erotique (MacDowell)1¼ Min.



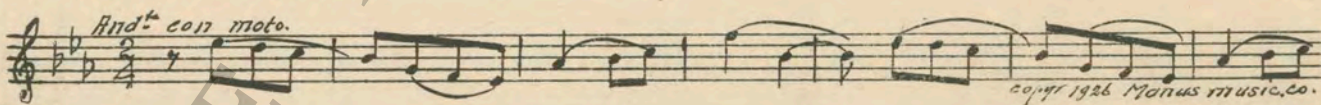
8 (Title) PETE! PETE!Prayer At Eventide (Elie)1½ Min.



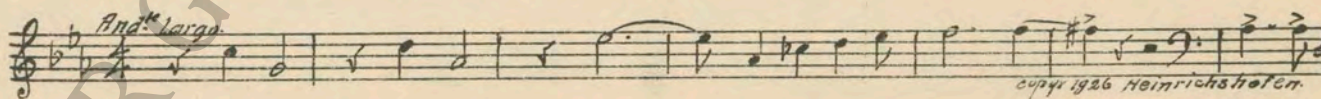
9 (Title) TEN YEARS AGOThe Swan (St. Saens)2 Min.



10 (Title) SHE JUST WAITED FOR HIMLamento (Gillet)1½ Min.



11 (Title) AND WHEN PETE WAS BORNIn the Night (Noack)1½ Min.



12 (Title) PETEPETE THEME: Serenade Romantique (Fosse)4¼ Min.



13 (Title) GRINDIN' DAY Paragraphs (Fall) 2¼ Min.

Musical notation for "GRINDIN' DAY" in treble clef, 2/4 time, key of D major. Tempo marking: *All^{to}*. Copyright: Emil Ascher, Inc.

14 (Action) WHISTLE SOUNDS ON BOILER Gigue (Bradford) 2¾ Min.

Musical notation for "WHISTLE SOUNDS ON BOILER" in treble clef, 3/8 time, key of D major. Tempo marking: *Vivace*. Copyright: 1927 Robbins music corp.

15 (Title) I SUPPOSE GIBBS THEME: Evil Intentions (Kempinski) ½ Min.

Musical notation for "I SUPPOSE" in treble clef, common time, key of B-flat major. Tempo marking: *Mod^{to}*. Includes markings for *pizz* and *arco*. Copyright: 1927 Crowing Berlin Inc.

16 (Action) MACHINE SINKS INTO EARTH Elopement (Carrozzini) ½ Min.

Musical notation for "MACHINE SINKS INTO EARTH" in treble clef, 2/4 time, key of B-flat major. Tempo marking: *Vivace*. Copyright: 1926 Seinemann musica.

17 (Title) YOU DON'T NEED NO POLE Humoresque (Herrmann) 2¾ Min.

Musical notation for "YOU DON'T NEED NO POLE" in treble clef, 2/4 time, key of D major. Tempo marking: *Grazioso facile*. Copyright: 1925 Heinrichshofen.

18 (Title) THROUGH LONG SUNNY DAYS Repeat Shepherd Theme No. 2 1¼ Min.

Musical notation for "THROUGH LONG SUNNY DAYS" in treble clef, common time, key of B-flat major. Tempo marking: *Express*.

19 (Action) GIBBS AND PALS Diabolical Allegro (Bergunker) ½ Min.

Musical notation for "GIBBS AND PALS" in treble clef, 2/4 time, key of D major. Copyright: 1927 G. Schirmer Inc.

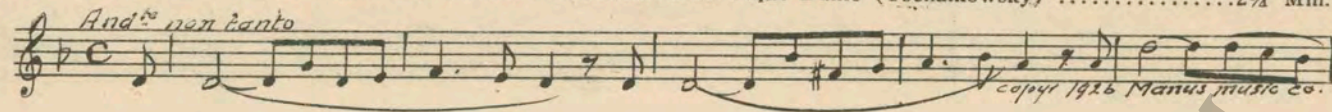
20 (Title) UNDER COVER OF DARKNESS Repeat Gibbs Theme No. 15 1 Min.

Musical notation for "UNDER COVER OF DARKNESS" in treble clef, common time, key of B-flat major. Tempo marking: *Mod^{to}*.

21 (Action) SHEEP AT TROTH Misterioso Agitato (Becca) 2¼ Min.

Musical notation for "SHEEP AT TROTH" in treble clef, common time, key of B-flat major. Tempo marking: *Agitato mosso*. Copyright: 1927 Heinrichshofen.

22 (Action) PETE WEeping OVER POISONED SHEEP... Lamento from Pique Dame (Tschaikowsky) 2¼ Min.

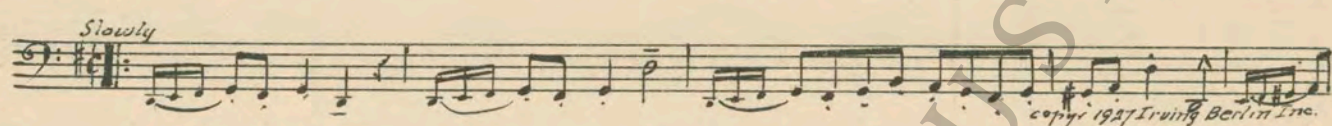
And^{te} non canto

copyr 1926 Manus music co.

23 (Title) AS THE STORY OF THIS MIRACLE Peacefulness (Borch) 1½ Min.

And^{te} simplice

copyr 1916 Belwin Inc.

24 (Title) AND WHEN SPRING CAME The Simpleton (Delille) 2¼ Min.

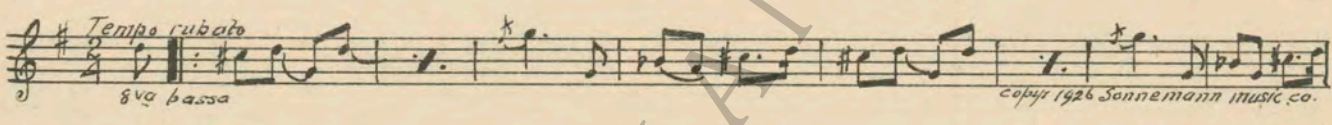
Slowly

copyr 1927 Irving Berlin Inc.

25 (Action) GIBBS AND PALS APPEAR Sarcasm (Kempinski) 1 Min.

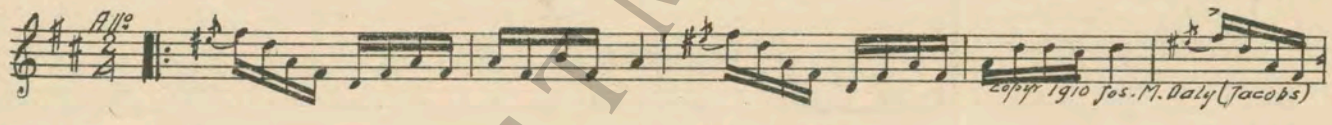
All^o Mod^{to}

copyr 1927 Irving Berlin Inc.

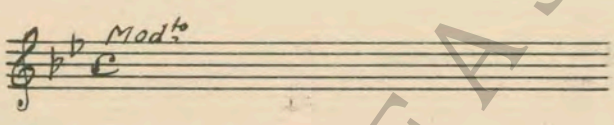
26 (Title) THE SUMMER Chatter (Kahn) 3½ Min.

Tempo rubato
8va bassa

copyr 1926 Sonnemann music co.

27 (Title) THE SHEPHERD'S DANCE Chicken Reel (Daly) 2¾ Min.

All^o

copyr 1910 Jos. M. Daly (Jacobs)

28 (Action) MUSIC STOPS Repeat Love Theme No. 6 2 Min.

Mod^{to}


29 (Action) OTHER RIG DRIVES UP Sakes Alive (Howard) ½ Min.

Mod^{to}

copyr 1920 M. Wilmark & Sons

30 (Title) HERE I AM, FOLKS He's a Devil (Berlin) 2¼ Min.

Mod^{to}

copyr 1914 Waterson Berlin & Snyder

31 (Title) STRIKE UP THE BAND The Happy Hayseed (Rolfe) 1¼ Min.

March

copyr 1903 Walter Jacobs

32 (Action) THEY STOP DANCING Reproach (Zamecnik) 2½ Min.

Mod^{to}

copyr 1927 Sam Fox Pub co.

33 (Title) YOU KIN BET Agitated Appassionato (Kilenyi) 2¼ Min.

Musical notation for item 33, featuring a treble clef, 3/8 time signature, and the tempo marking *ff appass*. Copyright 1927 Robbins Music Corp.

34 (Title) DAY AFTER DAY Andante from "Pathetique Symphony No. 6" (Tschaikowsky) 1¼ Min.

Musical notation for item 34, featuring a treble clef, 3/4 time signature, and the tempo marking *Adagio lamentoso*. Copyright 1916 Hawkes & Son.

35 (Title) ANGEL MAMMY Repeat Pete Theme No. 12 1¼ Min.

Musical notation for item 35, featuring a treble clef, 3/8 time signature, and the tempo marking *And^{te}*.

36 (Title) YOU CAN'T LEAVE ME Dramatic Scene (May) 4 Min.
NOTE: Play "PP" con sordini strings only.

Musical notation for item 36, featuring a treble clef, 3/4 time signature, and the tempo marking *And^{te} Appass.* Copyright 1926 Sonnemann Music Co.

37 (Action) SHEPHERD KNEELS AND PRAYS Meditation (Gounod) 1¾ Min.

Musical notation for item 37, featuring a treble clef, common time signature, and the tempo marking *And semplice*. Copyright 1910 Carl Fischer.

38 (Title) MY OWN LITTLE GRANDSON Sicilian Vespers (Verdi) 1 Min.

Musical notation for item 38, featuring a treble clef, common time signature, and the tempo marking *Largo*. Copyright 1914 Ross Jungrickel.

39 (Action) REFLECTION OF CROSS ON WALL Come, Ye Disconsolate (Webbe) ¾ Min.
NOTE: Play first movement only.

Musical notation for item 39, featuring a treble clef, 2/2 time signature.

40 (Title) STILL THAT MERCILESS HEAT Piangere (Gabriel Marie) 1¾ Min.
NOTE: Play as Organ Solo—"PP"

Musical notation for item 40, featuring a treble clef, 6/8 time signature, and the tempo marking *Lento*. Copyright 1928 Manus Music Co.

41 (Action) GIBBS AND PALS APPEAR Repeat Gibbs Theme No. 15 ¾ Min.

Musical notation for item 41, featuring a treble clef, 3/4 time signature, and the tempo marking *Mod^{to}*.

42 (Action) MATT RIDES UP Allegro Precipitoso (Savino) 2 Min.

Musical notation for item 42, featuring a treble clef, 3/8 time signature, and the tempo marking *All.* Copyright 1928 Schirmer.

43 (Title) BUT HOPE HAD DIED The Toilers (Axt) 1½ Min.

Musical notation for item 43, featuring a treble clef, common time signature, and the tempo marking *Mod^{to}*. Copyright 1926 Robbins Music Corp.

44 (Title) COME OUT QUICKLY, FOLKS IS LEAVIN' L'Orage (Gounod) 2¼ Min.

45 (Action) SHEPHERD ON BRIDGE Dramatic Reproach (Berge) 2 Min.

46 (Title) THERE'S A CHANCE HE'S TELLING Dramatic Allegro (Savino) 1 Min.

47 (Action) WAGONS APPEAR The Destruction of the Temple (Darcieux) 3 Min.

48 (Title) NOTE: Produce effect of landslide by Timpany Rolls ad lib. WHAT DID I TELL YOU Le Seigneur de Kermor (Gabriel Marie) 1 Min.

49 (Title) ALL I GET FROM YOU IS FAITH Disturbance (Zamecnik) 2½ Min.

50 (Action) GIBBS CONFRONTS SHEPHERD AGAIN..... Repeat No. 48 "Le Seigneur de Kermor" 1½ Min.

51 (Action) CLOUDS APPEAR Largo (Haendel) 1 Min.

52 (Title) NOTE: Produce rain effects ad lib throughout entire sequence. COME ON, WASH GIBBS Storm Music (Zamecnik) 1½ Min.

53 (Title) WELL, SO LONG FOLKS Repeat Shepherd Theme No. 2 ¾ Min.

THE END

Printed in U. S. A.

Complete orchestrations and single piano parts of each separate number contained hereon, can be purchased from CAMEO MUSIC SERVICE CORPORATION, 315-317 WEST 47th STREET, NEW YORK CITY.

95:2313:1