

Monday May 2/27

Thematic Music Cue Sheet

M. J. MINTZ (PATENT)
JULY 31, 1923.

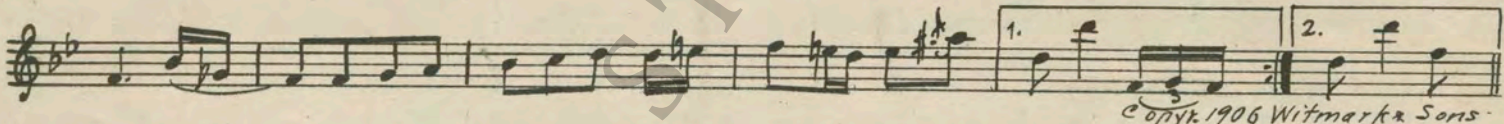
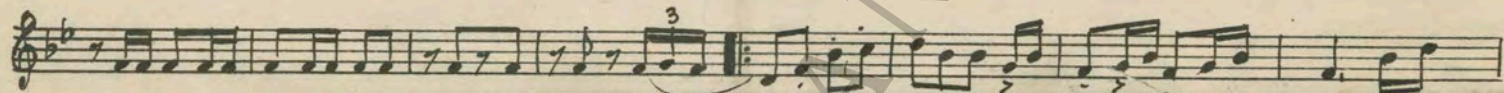
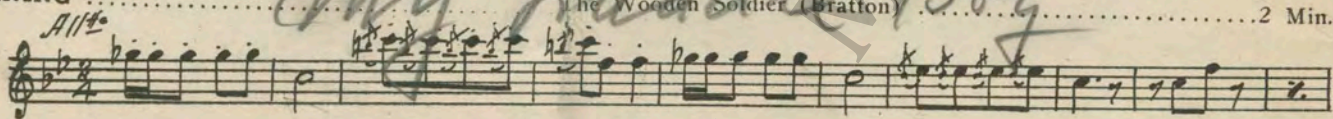
PATHE presents CHARLIE CHAPLIN

in One of his greatest successes 'SHOULDER ARMS' (Re-Issue)

Written, directed and produced by Charles Chaplin
Music compiled by Eugene Conte

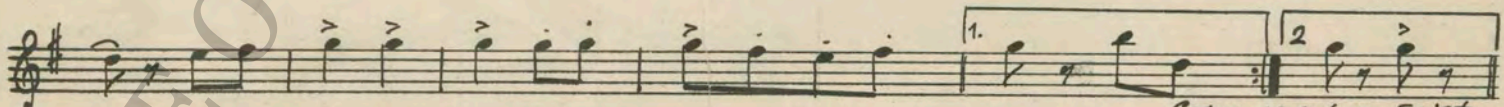
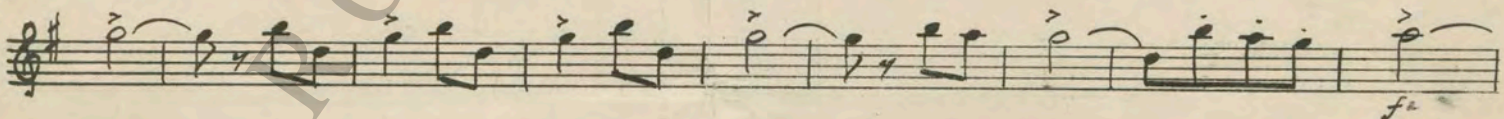
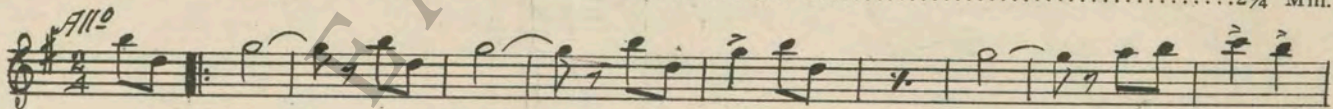
Pathépicture

1 AT SCREENING My Paddie Boy The Wooden Soldier (Bratton) 2 Min.



Copyright 1906 Witmark & Sons

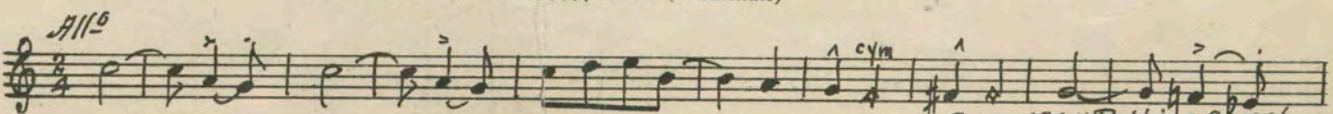
2 (Title) OVER THERE Over There (Cohan) 2 1/4 Min.



Copyright 1917 Leo Feist

NOTE: Play one chorus and segue.

SEGUE Ouch (Kaufman)



Copyright 1924 Robbins Engel

Segue

3 (Title) THE ENEMY Deutscher Walzer (Kaine) ½ Min.

Waltz *German Waltz*

Handwritten musical score for 'THE ENEMY' in 3/4 time. It consists of four staves: a treble clef staff with a key signature of one flat and a common time signature, followed by a bass clef staff. The music is a waltz. A dynamic marking 'f' is present in the second staff. A copyright notice 'Copyr. 1913 Volkwein Bros' is at the bottom right.

4 (Title) A QUIET LUNCH Otch (Kaufman) 1¾ Min.

All^o *Happy*

Handwritten musical score for 'A QUIET LUNCH' in 2/4 time. It consists of four staves, all in treble clef. The music is a march. A dynamic marking 'ff' is present in the first staff. A copyright notice 'Copyr. 1924 Robbins Engel' is at the bottom right.

5 (Action) CHAPLIN ALONE AFTER MAIL IS DISTRIBUTED All Alone (Berlin) ½ Min.

Valse lento

Handwritten musical score for 'CHAPLIN ALONE AFTER MAIL IS DISTRIBUTED' in 3/4 time. It consists of one staff in treble clef. The music is a waltz. A copyright notice 'Copyr. 1924 Irv. Berlin' is at the bottom right.

6 (Title) THIS MUST BE YOURS The Hustler (Srawley) 3 Min.

Quick Walking Pace

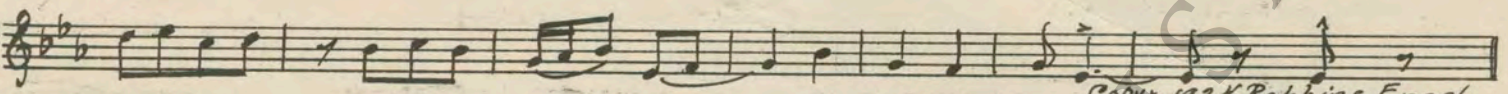
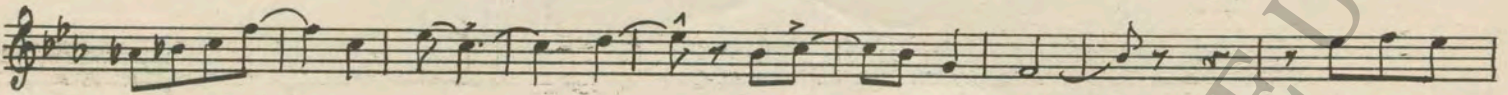
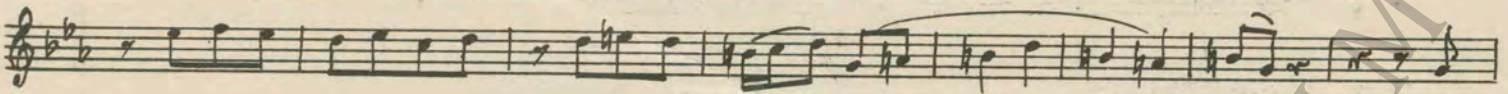
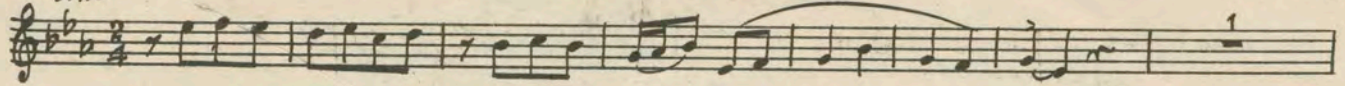
Handwritten musical score for 'THIS MUST BE YOURS' in 2/4 time. It consists of four staves, all in treble clef. The music is a march. A copyright notice 'Copyr. 1924 Sanders Co' is at the bottom right.

7 (Title) TO THE DAY Carnival Grotesque (Savino) 1½ Min.

All^o mod^{to}

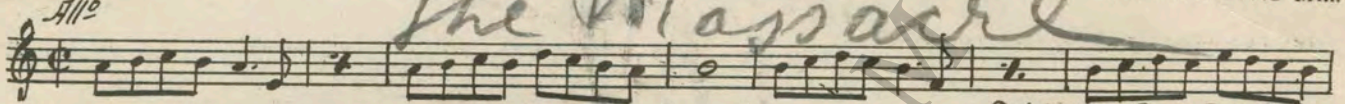
Handwritten musical score for 'TO THE DAY' in 3/8 time. It consists of one staff in treble clef. The music is a march. A copyright notice 'Copyr. 1923 G. Schirmer' is at the bottom right.

8 (Title) MORNING Happy Go Lucky (Kaufman) 1½ Min.



Copyr. 1924 Robbins Engel

9 (Action) OFFICER RUNS INTO TRENCH Hurry No. 1 (Zamecnik) 2 Min.



The Massacre

Copyr. 1919 Sam Fox P. Co.

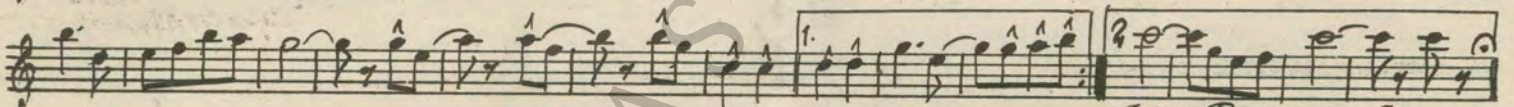
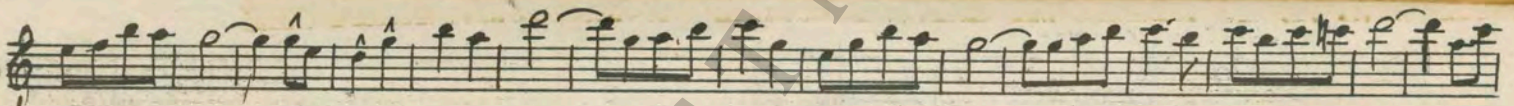
10 (Title) THE CAPTURED TRENCH Bohemiana (Smith) 1 Min.



The Ghost Trotter

Copyr. 1909 Carl Fischer

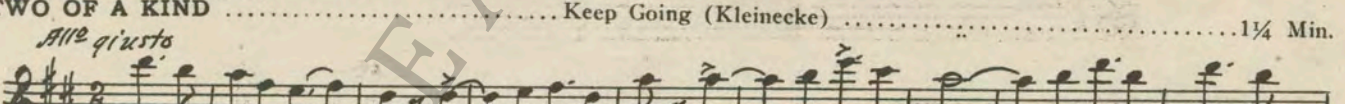
11 (Title) POOR FRANCE Madelon (Robert) ¾ Min.



Copyr. Remick & Co

12 (Title) TWO OF A KIND Keep Going (Kleinecke) 1¼ Min.

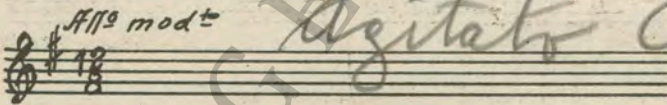
NOTE: Play slowly.



Allegro giusto

Copyr. 1915 G. Schirmer

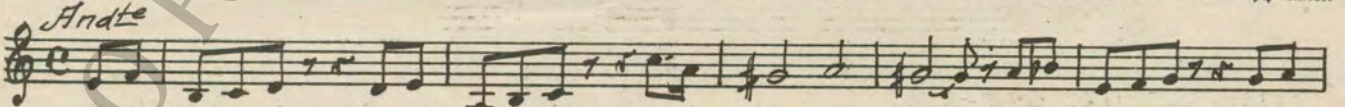
13 (Title) WITHIN THE ENEMY'S Repeat No. 7 "Carnival Grotesque" 1½ Min.



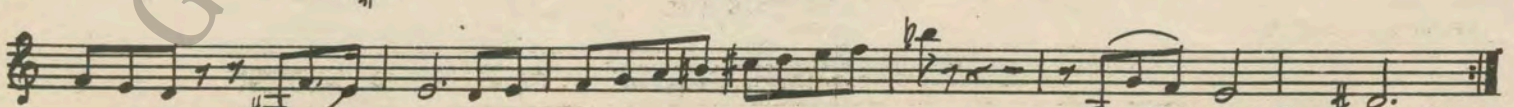
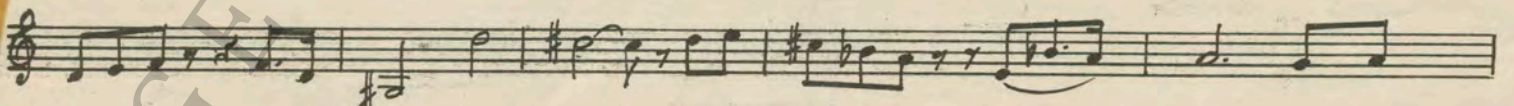
Allegro moderato

Agitato Con Moto

14 (Title) MORE HEROIC WORK Misterioso No. 5 (Zamecnik) ¾ Min.

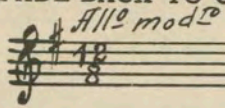


Andante



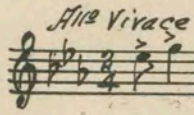
Copyr. 1920 Sam Fox P. Co

15 (Action) FADE-BACK TO CHAPLIN Repeat No. 7 "Carnival Grotesque" ¾ Min.



Agitato Appar, 55

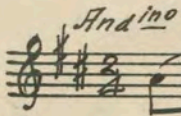
16 (Action) CHASE STARTS Comedy (Ketelbey) 2 Min.



Hurry 26

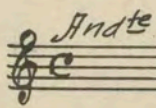
STUM

17 (Action) GIRL SEES CHAPLIN Un Peu d'Amour (Silesu) 2 Min.



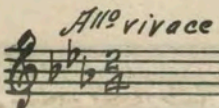
Copyr. 1924 Bosworth & Co
Copyr. 1912 Chappell & Co

18 (Action) GERMANS ENTER Repeat No. 14 "Misterioso No. 5" 1¼ Min.



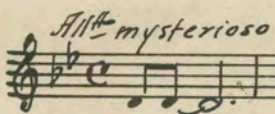
Misterious March

19 (Action) CHAPLIN GRABS GUN Repeat No. 16 "Comedy" 1 Min.



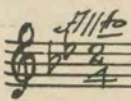
Hurry

20 (Title) ARRESTED FOR AIDING La Foret Perfide (Gabriel Marie) 1 Min.



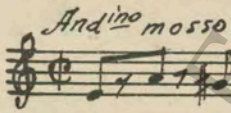
Copyr. 1919 Rouart Leralle

21 (Action) SOLDIERS LINED UP Repeat No. 1 "The Wooden Soldier" 1¾ Min.



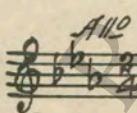
My Dough Boy

22 (Title) HIS PAL CAPTURED Mignonette (Savino) 2 Min.



Copyr. 1922 Boston Music Co

23 (Title) THE CAPTURE Repeat No. 8 "Happy Go Luckv" 2 Min.



Step Lively

24 (Title) PEACE ON EARTH Oh How I Hate to Get Up in the Morning ¾ Min.



THE END

Printed in U. S. A.

Orchestrations or single piano parts of each separate musical selection suggested hereon, can be purchased from CAMEO MUSIC SERVICE CORPORATION, 315-317 WEST 47TH STREET, NEW YORK CITY.

95:2324:1