

Jesse L. Lasky presents

A Charles Maigne Production

"THE SILENT PARTNER"

with

LEATRICE JOY

Owen Moore and Robert Edeson

Adapted by Sada Cowan from Maximilian Foster's Saturday Evening Post serial

Music compiled by James C. Bradford

Footage 5,866 feet

A Paramount Picture



1 AT SCREENING Southern Nights (Guion) 2 Min.

Valse Mod^o
Musical notation for Southern Nights (Guion). Copyright 1922 by G. Schirmer.

2 (Title) HARVEY DREDGE Pulcinello (Aletter) 1 1/4 Min.

All^o
Musical notation for HARVEY DREDGE. Copyright 1912 by G. Schirmer.

3 (Title) THE GRAVEYARD OF A MILLION Woodland Whispers (Czibulka) 1 1/4 Min.

Quasi All^o
Musical notation for THE GRAVEYARD OF A MILLION. Copyright 1922 Carl Fischer.

4 (Title) CLOSING TIME BRINGS GEORGE Carnival des Papillons (Shelley) 3/4 Min.

All^o
Musical notation for CLOSING TIME BRINGS GEORGE. Copyright 1921 by G. Schirmer.

5 (Title) I WISH I COULD THEME: Just as Long as You Have Me (von Tilzer) 1 1/4 Min.

Mod^o
Musical notation for I WISH I COULD. Copyright 1922 by Harms.

6 (Title) HARVEY AND CORA ENTER Softly Unawares (Lincke) 2 1/4 Min.

All^o
Musical notation for HARVEY AND CORA ENTER. Copyright 1909 by Edu. B. Marks.

7 (Title) SIX MONTHS PASS Rustic allegro (Savino) 1 1/4 Min.

All^o Mod^o
Musical notation for SIX MONTHS PASS. Copyright 1922 by G. Schirmer.

8 (Action) FADE-IN CORA IN BED ILL Eleanor (Deppen) 2 1/2 Min.

Mod^o espress
Musical notation for FADE-IN CORA IN BED ILL. Copyright 1913 by Sam Fox. *8va basso*

9 (Action) GEORGE AT HOME ALONE Al Fresco (Etienne) 3 Min.

All^o
Musical notation for GEORGE AT HOME ALONE. Copyright 1912 by B. Scholte & Söhne.

10 (Title) IF YOU DO SOMETHING YOU SHOULDN'T... Repeat Theme No. 5 3 1/2 Min.

11 (Title) BUT GEORGE YOU'LL BE SENSIBLE By the Mill Stream (Smith) 2 1/2 Min.

Poco u/veop
Musical notation for BUT GEORGE YOU'LL BE SENSIBLE. Copyright 1912 by Sam Fox Pub. Co.

12 (Title) PLEASE GEORGE Repeat Theme No. 5 1 1/4 Min.

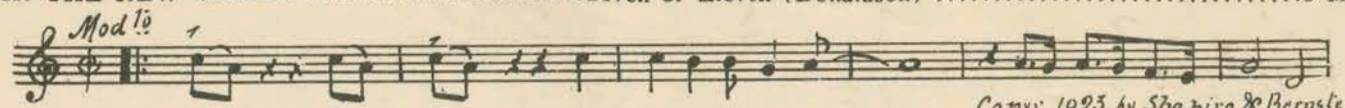
13 (Title) AND LISA KEPT HER WORD Butterfly (Densmore) 3 Min.

All^o con molto grazia
Musical notation for AND LISA KEPT HER WORD. Copyright 1916 by G. Schirmer.

14 (Action) GEORGE ENTERS ROOM Cinderella's Bridal Procession (Dicker) 2 1/2 Min.

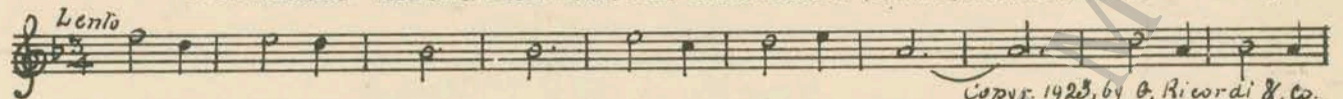
Mod^o grazioso
Musical notation for GEORGE ENTERS ROOM. Copyright 1923 by Carl Fischer. *Poco rit*

15 (Title) **IN THE NEW CIRCLE** Seven or Eleven (Donaldson) 3 Min.



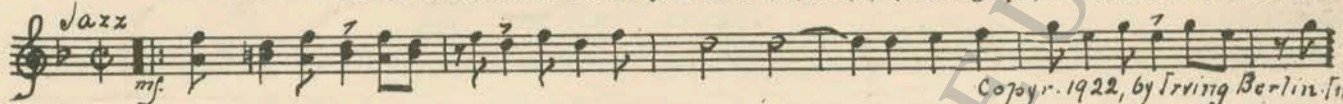
Copyr. 1923, by Shapiro & Bernstein

16 (Action) **GEORGE OPENS CURTAINS—HIDING BAR..** Take This Little Rosebud (Connor)..... 1 1/4 Min.



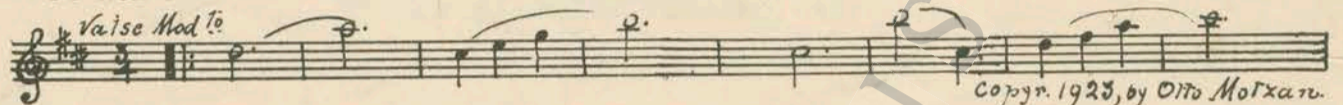
Copyr. 1923, by G. Ricordi & Co.

17 (Title) **AT BLACKHEATH COUNTRY CLUB**..... Pack Up Your Sins (Berlin) (Phonograph)..... 3 Min.



Copyr. 1922, by Irving Berlin, Inc.

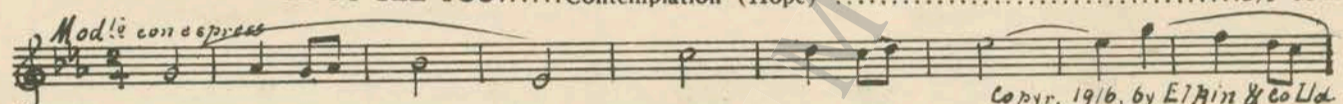
18 (Title) **IF YOU WANT TO KNOW** Moon Glow (Motzan) 2 Min.



Copyr. 1923, by Otto Motzan.

19 (Title) **WITH EVERY DOLLAR** Repeat No. 7 "Rustic Allegro" 3 1/4 Min.

20 (Title) **THERE'S A MRS. DODGE TO SEE YOU**..... Contemplation (Hope) 2 1/2 Min.



Copyr. 1916, by Elgin & Co Ltd

21 (Title) **THAT NIGHT** Romance (Grunfeld) 2 1/2 Min.



Copyr. 1917, by Carl Fischer

22 (Title) **AT THE OPENING NEXT DAY** Repeat No. 7 "Rustic Allegro" 4 Min.

23 (Action) **GERTIE AND COOMBS AT TABLE** Louisiana Nights (Stoughton) 1 Min.



Copyr. 1923, by W. Jacobs, Inc.

24 (Action) **GEORGE ENTERS ROOM** My Abode (Schubert) 2 Min.



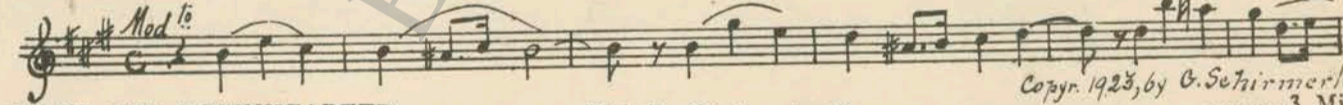
Copyr. by Oliver Ditson Co.

25 (Action) **GEORGE BREAKS OPEN DESK** Dramatic andante No. 1 (Rapee-Axt) 4 Min.



Copyr. 1922, by R. Robbins Inc.

26 (Action) **GEORGE PICKS UP TELEPHONE**..... Romance (Frommel) 4 1/4 Min.



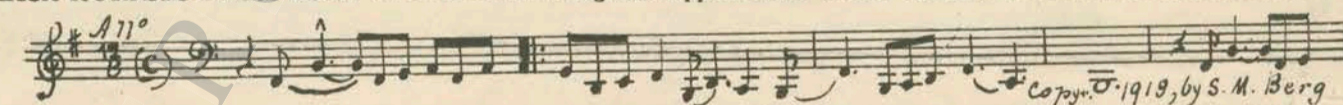
Copyr. 1923, by G. Schirmer Inc

27 (Title) **HURT AND DOWNHEARTED**..... Melodie (Rachmaninoff) 3 Min.



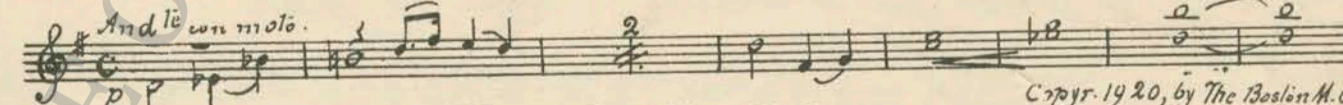
Copyr. 1918, by Carl Fischer

28 (Action) **LISA HURRIES FROM BOAT** Agitato Appassionato No. 55 (Borch) 1 1/2 Min.



Copyr. 1919, by S. M. Berg

29 (Action) **GEORGE ALONE IN ROOM** After Sundown (Friml) 2 1/2 Min.



Copyr. 1920, by The Boston M. Co.

30 (Title) **NOTHING MATTERS BUT OUR LOVE**..... Repeat Theme No. 5 1 1/2 Min.

THE END

Country of Origin U. S. A.

Complete Orchestrations and single parts of all compositions contained herein can be purchased from
CAMERO MUSIC PUBLISHING CO., INC., 112-116 West 44th Street, New York City

95:2330:1