

Thursday February 17/27



2 Themes

ADOLPH ZUKOR and JESSE L. LASKY present

D. W. Griffith's Production "SORROWS OF SATAN"

by Marie Corelli with

ADOLPHE MENJOU as Satan

Ricardo Cortez, Carol Dempster and Lya de Putti

Adaptation by John Russell and George Hull

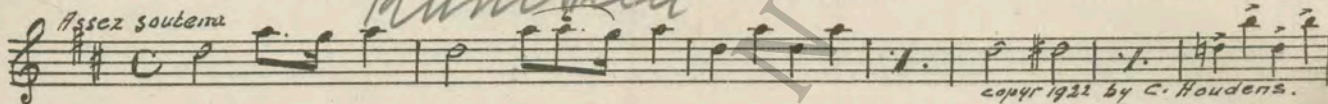
Screen play by Forrest Halsey

Music compiled by James C. Bradford

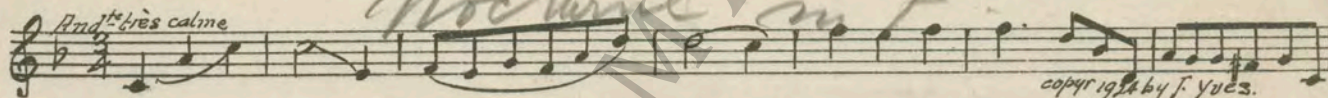
Footage 8478 feet

A Paramount Picture

1 AT SCREENING ... Poeme Dramatique (Fourdain) ... 3 Min.

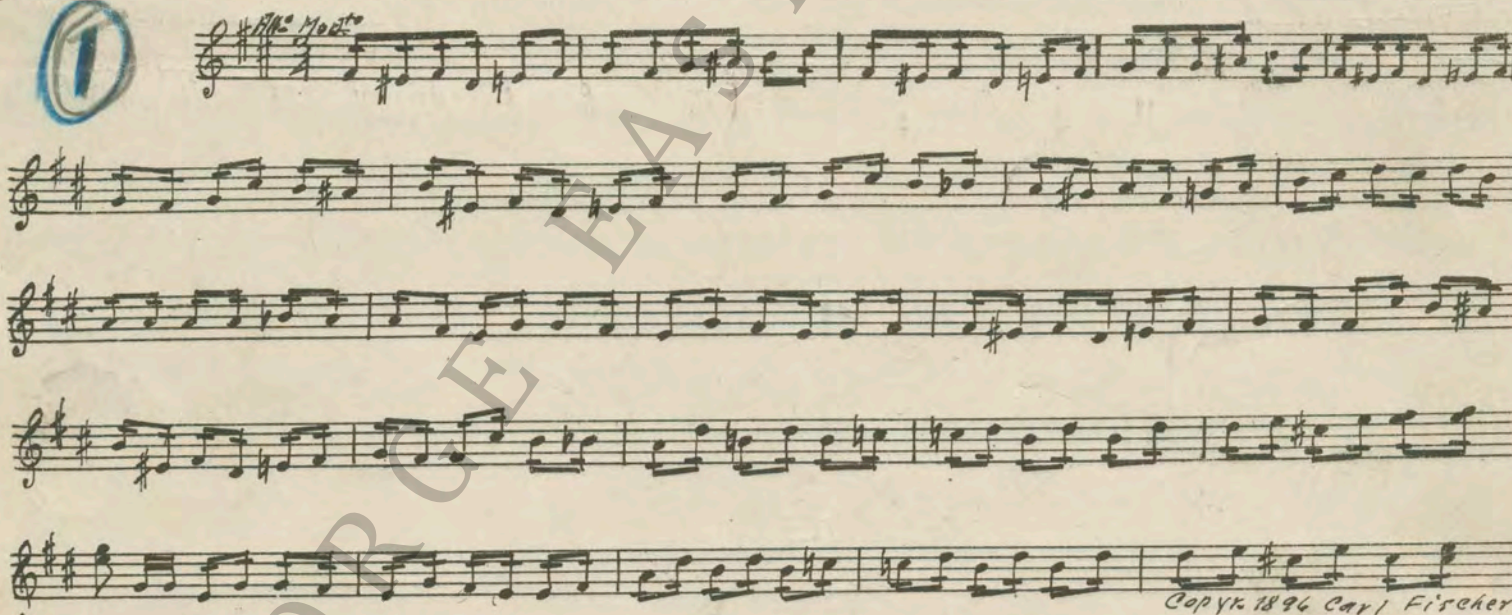


2 (Title) OUR STORY BEGINS ... Apres L'Orage (Mouton) ... 1 1/2 Min.

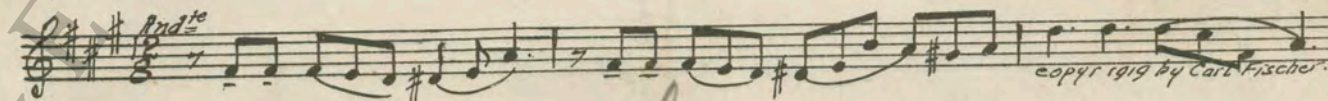


3 (Title) HOPE MAY BE DEFERRED ... LANDLADY THEME: Unfinished Symphony (Schubert) ... 1 1/2 Min.

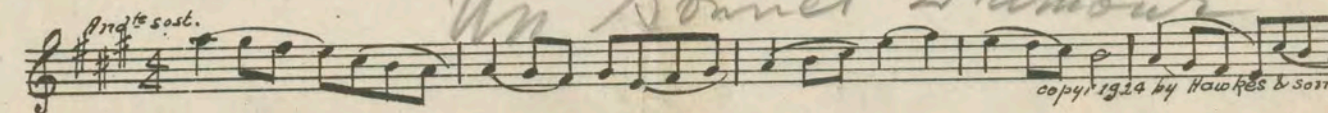
①



4 (Title) JUST ENOUGH FOR SUPPER ... Poem (Fibich) ... 2 1/2 Min.



5 (Action) MAVIS ENTERS BAKERY ... In a Kentish Garden (Rawlinson) ... 1 Min.



6 (Title) I'VE WRITTEN A POEM TO YOU MAVIS THEME: The Swan (St. Saens) 1 1/4 Min.

Handwritten circled '2' in a red circle. Musical score for 'I'VE WRITTEN A POEM TO YOU' by St. Saens, marked 'Adagio'. The score consists of four staves of music. A large watermark 'EASTMAN' is visible across the page.

7 (Title) WHAT GOOD ARE IDEALS A Keltic Lament (Foulds) 1 1/4 Min.

Musical score for 'WHAT GOOD ARE IDEALS' by Foulds, marked 'Lento'. Handwritten title 'Withered Flowers' is written above the staff. Copyright 1916 by Hawkes.

8 (Title) LET ME COME IN Dans la Montagne (Fourdrain) 2 Min.

NOTE: Play as Cello Solo very quietly and plaintive. Musical score for 'LET ME COME IN' by Fourdrain, marked 'Largement soutenu'. Handwritten title 'Dram. And to 32' is written above the staff. Copyright by G. Fourdrain.

9 (Action) MAVIS PUTS ON JACKET Repeat Mavis Theme No. 6 3/4 Min.

Handwritten circled '2' in a red circle. Musical notation for 'MAVIS PUTS ON JACKET', marked 'Adagio'.

10 (Action) MAVIS PULLED INTO GEOFFREY'S ROOM... Repeat Landlady Theme No. 3 1/2 Min.

Handwritten circled '1' in a blue circle. Musical notation for 'MAVIS PULLED INTO GEOFFREY'S ROOM', marked 'Alte Moderato'.

11 (Action) GEOFFREY KISSES MAVIS' HAND LOVE THEME: Trees (Rasbach) 1 1/4 Min.

Musical score for 'GEOFFREY KISSES MAVIS' HAND', marked 'Andte'. Handwritten title 'One little Dream of love' is written above the staff. Copyright 1922 by G. Schirmer.

12 (Action) MAVIS STARTS TO STRUGGLE Crepuscule d'Angoisse (Fosse) 3/4 Min.

NOTE: Play "PP" con sordini strings only. Musical score for 'MAVIS STARTS TO STRUGGLE', marked 'Maestoso'. Handwritten title 'Dram. Solo' is written above the staff. Copyright by J. Yves.

13 (Action) MILKMAN ON STREET MAKING ROUNDS... Cantilena (Goltermann) 1 Min.

Musical score for 'MILKMAN ON STREET MAKING ROUNDS', marked 'Andte'. Handwritten title 'Atonement' is written above the staff. Copyright 1923 by G. Schirmer.

14 (Action) LANDLADY APPEARS IN HALLWAY Repeat Landlady Theme No. 3 3/4 Min.

Handwritten circled '1' in a blue circle. Musical notation for 'LANDLADY APPEARS IN HALLWAY', marked 'Alte Moderato'.

15 (Action) MAVIS CONFRONTS LANDLADY Appassionato Lirico (Berge) 1 1/2 Min.

Musical score for 'MAVIS CONFRONTS LANDLADY', marked 'Molto Moderato'. Handwritten title 'Passion' is written above the staff. Copyright 1926 by Irving Berlin Inc.

16 (Title) BUT THAT VERY MORNING Repeat Love Theme No. 11 2½ Min.

Andte
C
Eleanor

17 (Title) AND YOU MUST COME WITH ME Aban Ion (Siewert) 2 Min.

Brilliantly
Dream of the Dance
Copyright 1926 by Geo. H. Sanders

18 (Action) AT LICENSE BUREAU At Sunset (Brewer) 1¼ Min.

Modto grazioso
Copyright 1908 by Sam Fox P.C.

19 (Action) MAVIS IN ROOM LOOKING AT CUP Repeat Mavis Theme No. 6 ¾ Min.

Adagio
3/4
2

20 (Title) FOR THE FIRST TIME A Mon Passage (Francheschi) ½ Min.

Allegretto
Crinoline
Sonnemann Music Co

21 (Action) GEOFFREY BEFORE EDITOR To a Violet (Zamecnik) ¾ Min.

Modto
Yawning
Copyright 1921 by Sam Fox.

22 (Action) FLASH-BACK TO MAVIS Jolly Trotters (Gillet) ¾ Min.

Allo ma non troppo
By Cheo auchant
Copyright 1926 by Manus Music Co

23 (Title) BITTER REBELLION Dans L'Ergastule (Fosse) 1¼ Min.

Ben Modto
Junio
Copyright 1925 by J. Yves.

24 (Action) NOTE: Storm, wind, lightning flashes off stage ad lib. SHADOW APPEARS THROUGH HALLWAY..Tragic Scene (Berge) 3½ Min.

Modto mosso
Copyright 1924 by Kass. Jungnickel.

25 (Action) HOTEL FOYER Serenata (Moszkowsky) 1¾ Min.

Andte grazioso
Copyright 1915 by Carl F. Scher.

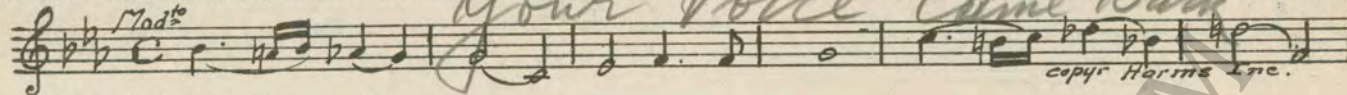
26 (Title) PRINCESS OLGA GODOVSKY Intermezzo (Granados) 2½ Min.

Copyright 1916 by G. Schirmer.

27 (Action) FLASH-BACK TO MAVIS Repeat Mavis Theme No. 6 ¾ Min.

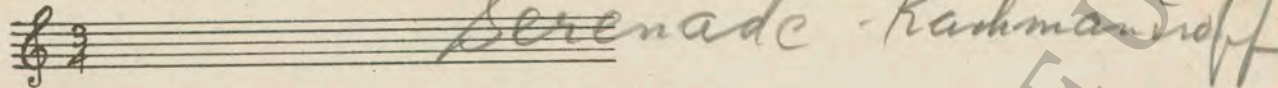
Adagio
3/4
2

28 (Title) COULD YOU EXCUSE ME Somewhere a Voice Is Calling (Fate) 1½ Min.

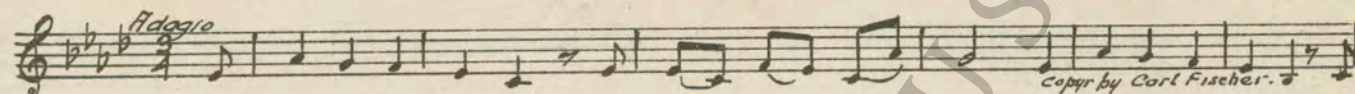


NOTE: Play "PP" con sordini strings only.

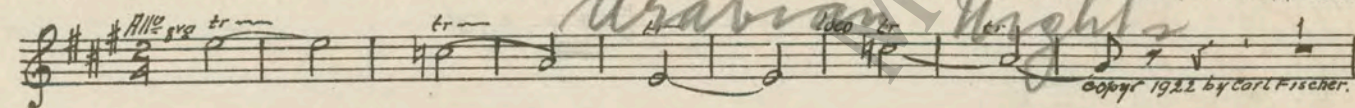
29 (Action) FLASH-BACK TO OLGA Repeat No. 26 "Intermezzo" 1 Min.



30 (Action) MAVIS COVERING TABLE WITH NEWSPAPER Forsaken (Koschat) ½ Min.



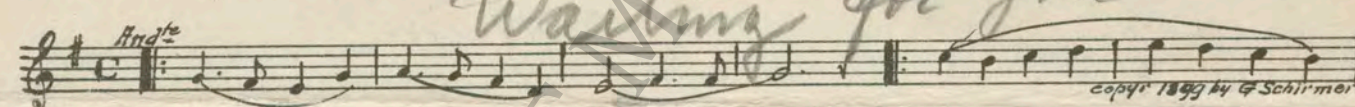
31 (Action) FLASH-BACK TO CAFE-CABARET Whispering Flowers (Von Blon) ¾ Min.



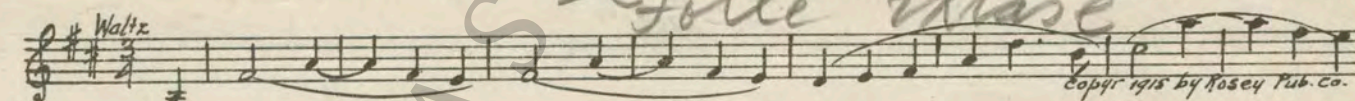
32 (Action) DANCER BACKS AWAY FROM AUDIENCE... The Swallows (Klein) ½ Min.



33 (Title) MAVIS WAITED All Through the Night ½ Min.

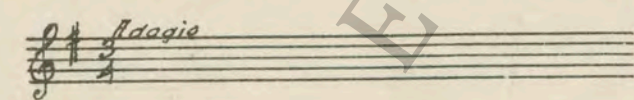


34 (Title) MEANWHILE AT PRINCE LUCIO'S Valse Divine (Rosey) 1 Min.

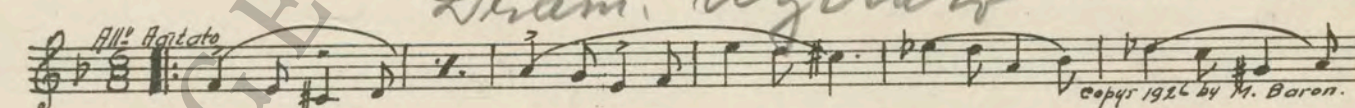


35 (Action) MAVIS ALONE IN ROOM Repeat Mavis Theme No. 6 ¼ Min.

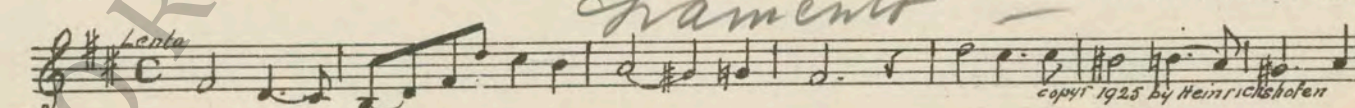
9



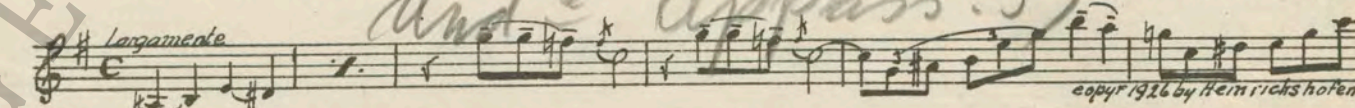
36 (Title) TELL PRINCE LUCIO Lamentation Desesperee (Baron) 1½ Min.



37 (Action) FLASH-BACK TO MAVIS AT TYPEWRITER... Lament (Herrmann) 2 Min.

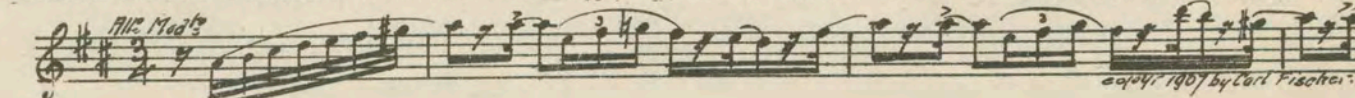


38 (Title) GEOFFREY, WHERE IS HE Temptation (Sommer) 2½ Min.



NOTE: Start moderately and work up to big climax as car finally disappears, then let down; motor effect throughout entire sequence.

39 (Title) PRINCE LUCIO HURRIED Fete Boheme (Massenet) ¾ Min.



40 (Action) OLGA AND GEOFFREY IN GARDEN Valse-Bluette (Drigo) 1 Min.

Musical notation for item 40. Includes tempo marking *Tempo di Valzer* and copyright notice *copyr 1919 by G. Schirmer.*

41 (Action) HANDS ON KEYS OF TYPEWRITER Repeat Mavis Theme No. 6 1/2 Min.

Musical notation for item 41. Includes tempo marking *Adagio*. A circled number '2' is written in the left margin.

42 (Action) FLASH-BACK TO GARDEN Repeat No. 26 "Intermezzo" 3/4 Min.

Musical notation for item 42. Includes handwritten title *Serenade Romantique*.

43 (Title) AROUND THE ILL ASSORTED PAIR Bacchanalia (Sommer) 1 1/4 Min.

Musical notation for item 43. Includes tempo marking *All^o Maestoso* and copyright notice *copyr 1925 by Heinrich Strofer.*

44 (Title) THE NEW MILLIONAIRE Chanson Melancholique (Collinge) 3/4 Min.

Musical notation for item 44. Includes tempo marking *And^{te}* and copyright notice *copyr 1920 by Belwin.*

45 (Action) WEDDING PROCESSION Wedding March (DeKoven) 1 1/2 Min.

Musical notation for item 45. Includes tempo marking *Marcia* and copyright notice *copyr 1918 by Boston music co.*

46 (Action) BRIDE AND GROOM BEFORE CLERGYMAN Traumerci (Schumann) 1/2 Min.

Musical notation for item 46. Includes tempo marking *Mod^{to}* and copyright notice *copyr by Emil Fischer.*

47 (Action) GEOFFREY KISSES BRIDE Wedding March (Sousa) 1 Min.

Musical notation for item 47. Includes tempo marking *Majestically sw* and copyright notice *copyr 1918 by Fox.*

48 (Title) OTHER LODGERS IN THE HOUSE Sing a Song of Swanee (Breau) 1 1/4 Min.

Musical notation for item 48. Includes tempo marking *Mod^{to}* and copyright notice *copyr by Belwin Inc.*

49 (Action) MAVIS ENTERS WILD PARTY Step With Pep (Kaufman) 1 1/4 Min.

Musical notation for item 49. Includes tempo marking *All^o con spirito* and copyright notice *copyr 1916 by J.W. Stern Inc.*

50 (Action) MAVIS MEETS PRINCE Intermezzo from "Atonement of Pan" (Hedley) 1 1/4 Min.

Musical notation for item 50. Includes tempo marking *And^{te}* and copyright notice *copyr 1916 by G. Schirmer.*

51 (Title) THE HONEYMOON WAS A SILKEN ADVENTURE Bientot Libre (Gabriel Marie) 3/4 Min.

Musical notation for item 51. Includes tempo marking *San tuaco ma non troppo* and copyright notice *copyr 1925 by Chapelier.*

NOTE: Play very lightly.

52 (Action) PRINCE ENTERS *Amoureuse (Gillet)* ¾ Min.

Love is sickle
 Musical notation for 'Amoureuse (Gillet)' in G major, 3/4 time, marked 'Valse Mod^{to}'.
copyr 1901 by P. Decourcelle.

53 (Action) NEWSPAPER OFFICE Repeat Mavis Theme No. 6 1¼ Min.

2
 Musical notation for 'Repeat Mavis Theme No. 6' in G major, 3/4 time, marked 'Adagio'.

54 (Action) GEOFFREY IN ROOM CALLS MAVIS NOTE: Rain and wind effects ad lib off stage. Repeat Love Theme No. 11 ½ Min.

And fleeting hour
 Musical notation for 'Repeat Love Theme No. 11' in G major, common time, marked 'And^{te}'.

55 (Title) UNCONQUERABLE OF SOUL Manuel Menendez (Filiasi) 2¼ Min.

Musical notation for 'Manuel Menendez (Filiasi)' in G major, 3/4 time, marked 'Adagio'.
copyr 1904 by Ed. Sonzogno.

56 (Action) OLGA IN BOUDOIR Mystere Oppressant (Gabriel Marie) 2¾ Min.

Musical notation for 'Mystere Oppressant (Gabriel Marie)' in G major, 3/4 time, marked 'And^{te}'.
copyr 1924 by S. Chapelier.

57 (Action) OLGA SPEAKS TO PRINCE NOTE: Play "PP" in slow and monotonous tempo. Tristan and Isolde (Wagner) 3½ Min.

lento
 Musical notation for 'Tristan and Isolde (Wagner)' in G major, 8/7 time, marked 'lento'.
copyr 1926 by G.M. Rosenber.

58 (Action) MAVIS IN BED ILL Repeat Mavis Theme No. 6 ½ Min.

2
 Musical notation for 'Repeat Mavis Theme No. 6' in G major, 3/4 time, marked 'Adagio'.

59 (Title) AFTER TEMPEST'S WIFE'S DEATH Danger Conjure (Gabriel Marie) 1½ Min.

Agitato non troppo
 Musical notation for 'Danger Conjure (Gabriel Marie)' in G major, 3/4 time, marked 'Agitato non troppo'.
copyr 1924 by Chapelier.

60 (Title) I NEVER SAID I WAS YOUR FRIEND *Le Moulin Hante (Snoek)* ¼ Min.

And^{te} Moestoso
 Musical notation for 'Le Moulin Hante (Snoek)' in G major, common time, marked 'And^{te} Moestoso'.
copyr by J. Yves.

61 (Action) SHADOW APPEARS *Terror (Leuschner)* 2½ Min.

Largamente ma fiero
Gruesome misterioso
 Musical notation for 'Terror (Leuschner)' in G major, common time, marked 'Largamente ma fiero'.
copyr 1925 by Albert Sahapez.

62 (Title) YOURS IS THE WAY Largo (Haendel) ¾ Min.

Largo
 Musical notation for 'Largo (Haendel)' in G major, 3/4 time, marked 'Largo'.
copyr 1900 by Carl Fischer.

63 (Title) SEE, THERE IS NOTHING THERE Repeat Love Theme No. 11 ½ Min.

And^{te}
I'm a longing to you
 Musical notation for 'Repeat Love Theme No. 11' in G major, common time, marked 'And^{te}'.

THE END

Country of Origin, U. S. A.

Orchestrations or single piano parts of each separate musical selection suggested hereon, can be purchased from CAMEO MUSIC SERVICE CORPORATION, 315-317 WEST 47TH STREET, NEW YORK CITY.