

Wednesday  
Feb 3



Tiffany Productions

PRESENTS

“SOULS FOR SABLES”

FEATURING

Claire Windsor and Eugene O'Brien

ADAPTED AND SUPERVISED BY

A. P. YOUNGER

DIRECTED BY

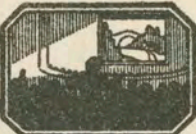
JAMES C. McKAY

MUSIC COMPILED BY

JAMES C. BRADFORD

Complete Orchestrations and single parts of all compositions contained herein can be purchased from CAMEO  
MUSIC SERVICE CORPORATION, 112-118 West 44th Street, New York City

MADE IN U. S. A.

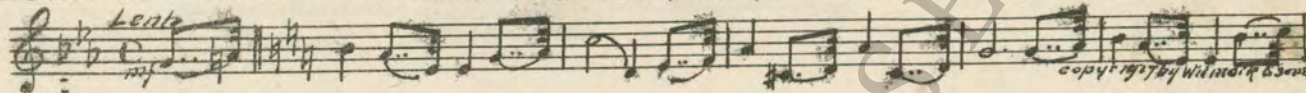
Thematic Music  Cue Sheet

M. J. MINTZ (PATENT)  
JULY 31, 1923.

“SOULS FOR SABLES”

Music compiled by James C. Bradford

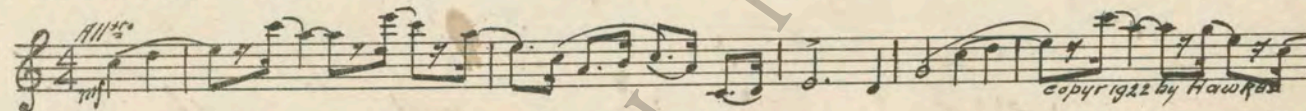
- 1 AT SCREENING ..... Love Theme (Herbert) ..... ¾ Min.



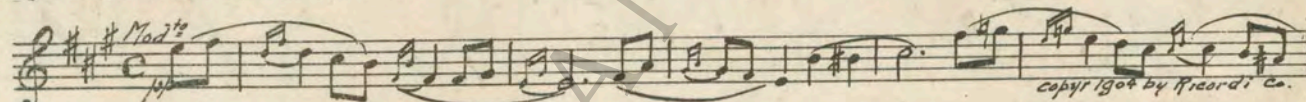
- 2 (Title) THE CHARATER OF THE NELSON SOAP COMPANY ..... Serenade (Chaminade) ..... 2½ Min.



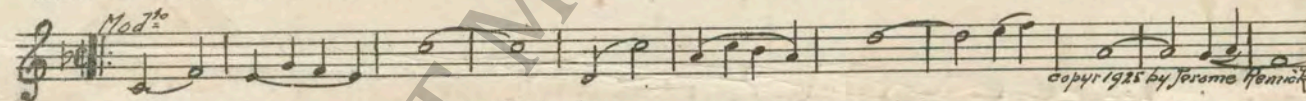
- 3 (Title) GET ME MISS ALICE KENDALL ..... Fleurette d' Amour (Fletcher) ..... 1 Min.



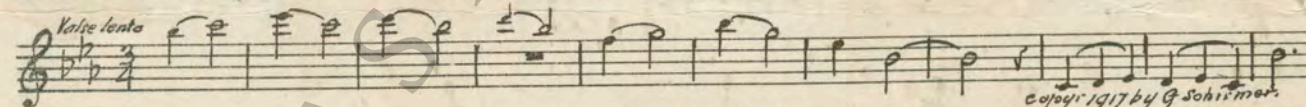
- 4 (Title) MR. JAMES HAMILTON ..... Serenade Coquette (Barthelemy) ..... 1¼ Min



- 5 (Action) MRS. HAMILTON CLOSE-UP—MEETS MORRELL ..... Swanee Butterfly (Donaldson) ..... 2¼ Min.



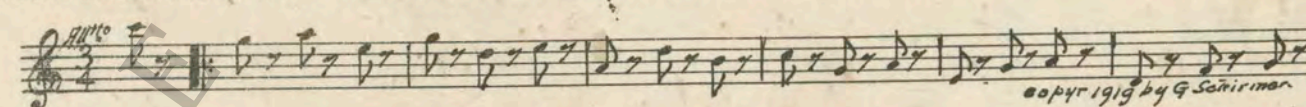
- 6 (Action) FRED ENTERS HOME—ALICE DRESSING .... THEME: Will You Remember (Romberg) ..... 1½ Min.



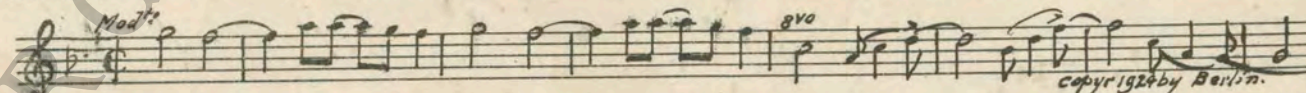
- 7 (Title) AND SO A HAPPY GIRL ..... Repeat No. 3 “Fleurette d’Amour” ..... 3 Min



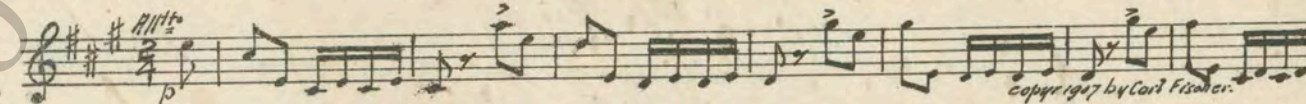
- 8 (Title) PHONE STEWART ..... Waltz-Scherzo (Straus) ..... 3 Min.



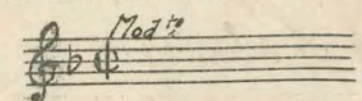
- 9 (Title) A YEAR LATER ..... Lazy (Berlin) ..... 2¾ Min.



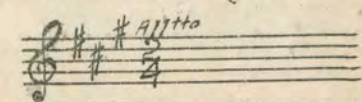
- 10 (Action) ALICE IN BATHTUB ..... Aubade Printaniere (Lacombe) ..... 2¾ Min.



- 11 (Action) MRS. HAMILTON PACKING JIM'S BAG ..... Repeat No. 5 “Swanee Butterfly” ..... 1¾ Min.

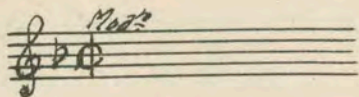


- 12 (Action) FLASH-BACK TO ALICE AND FRED ..... Repeat No. 10 “Aubade Printaniere” ..... 1¼ Min

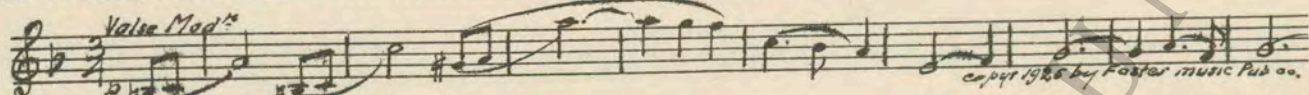


ID. Flash back to James and his wife -

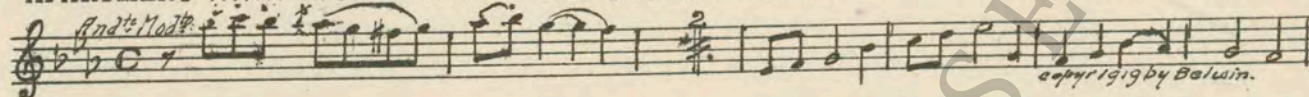
13 (Action) FLASH-BACK TO JAMES AND HIS WIFE ..... Repeat No. 5 "Swanee Butterfly" ..... 1¼ Min



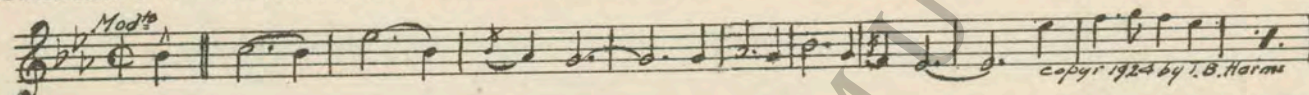
14 (Action) FRED TALKING TO BOSS ..... Rose-Impromptu (Finston) ..... 2½ Min.



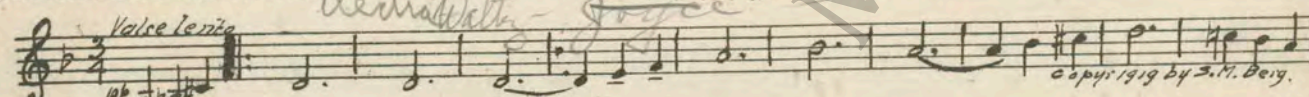
15 (Action) ALICE ENTERS MRS. HAMILTON'S APARTMENT ..... Budding Spring (Platzmann) ..... ½ Min.



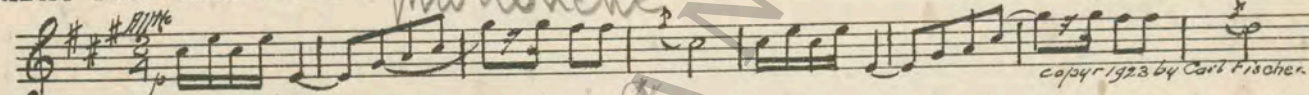
16 (Action) RESTAURANT ..... Rose Marie (Friml) ..... 1¾ Min.



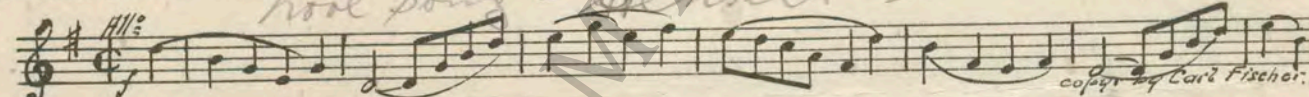
17 (Action) MORRELL ENTERS ..... Mysterious Nights (Berg) ..... 1¼ Min.



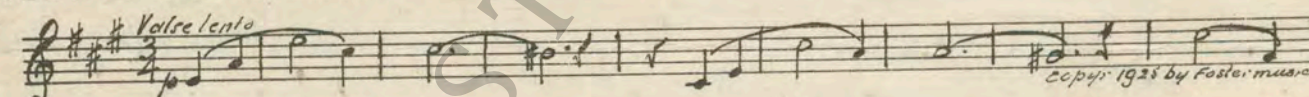
18 (Title) FRIDAY THE THIRTEENTH ..... Cinderella's Bridal Procession (Dicker) ..... 3 Min



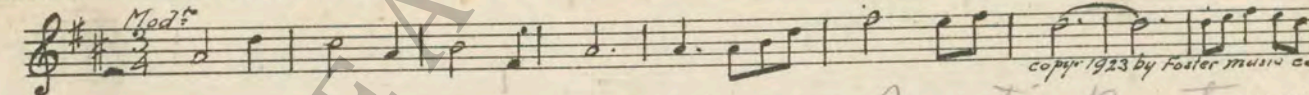
19 (Title) I'LL RUN DOWN ..... Babillage (Gillet) ..... 3 Min



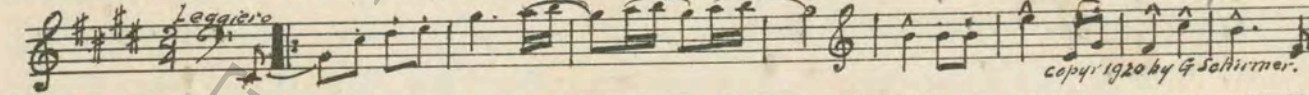
20 (Title) WHEN A WIFE IS FORCED TO CHOOSE ..... Ball Room Fancies (Finston) ..... 2 Min.



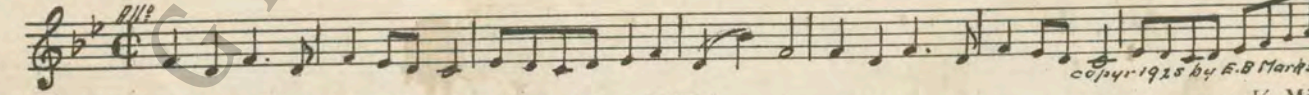
21 (Action) ALICE RECEIVES CHECK FROM MORRELL .. Rusty Golden Rod (Schuler) ..... 1¾ Min.



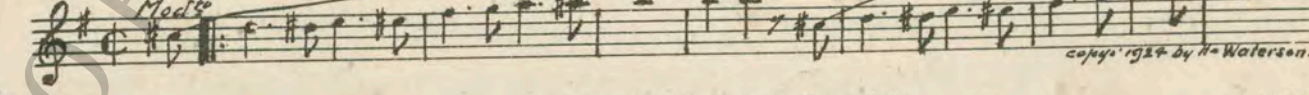
22 (Title) SUCCESSFUL MEN MAKE DECISIONS..... Marche Mignome (Poldini) ..... 1½ Min.



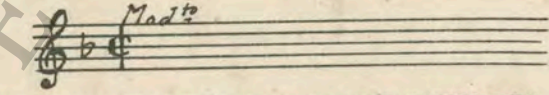
23 (Action) MODISTE SHOP ..... Sleeping Beauty's Wedding (Rhode) ..... 2¼ Min.



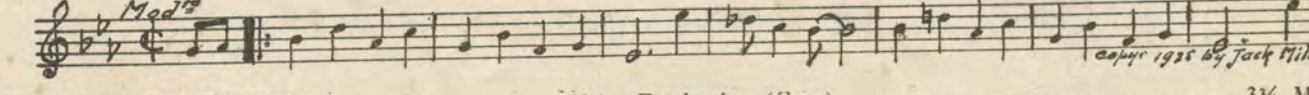
24 (Action) MRS. HAMILTON TELEPHONING ..... Jealous (Little) ..... ½ Min.



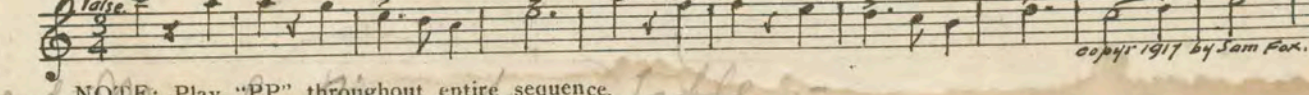
25 (Action) JIMMY ENTERS ..... Repeat No. 5 "Swanee Butterfly" ..... ¾ Min.



26 (Title) THERE ARE SOME FEW LITTLE CHORES .. When a Blonde Makes Up Her Mind (Mills) ..... ¾ Min.



27 (Action) RESTAURANT-DANCING ..... Valse Fascination (Grey) ..... 3¼ Min.



NOTE: Play "PP" throughout entire sequence.

D - Alice and Morrell sit at table

28 (Action) ALICE AND MORRELL RISE FROM TABLE... Tea for Two (Youmans) .....1 3/4 Min.

Musical notation for Tea for Two (Youmans), Mod<sup>o</sup>, copyright 1929 by Harms.

29 (Action) ALICE ENTERS BOUDOIR—HIDES COAT.... Misterioso alla Valse (Savino) .....1 Min.

Musical notation for Misterioso alla Valse (Savino), Valse Mod<sup>o</sup>, copyright 1923 by G. Schirmer.

30 (Action) FRED SEES NOTE ..... Repeat Theme No. 6 .....2 Min.

II Musical notation for Repeat Theme No. 6, Valse lento.

31 (Title) SWEETHEART, I DON'T WANT YOU TO SEE ..... Love Song (Wright) .....3 Min.

Musical notation for Love Song (Wright), And<sup>te</sup>.

32 (Action) FRED WALKS TOWARD CLOSET—ALICE AFRAID ..... La Foret Perdue (Gabriel Marie) .....3 1/4 Min.

Musical notation for La Foret Perdue (Gabriel Marie), All<sup>o</sup> mod<sup>o</sup>, pp, copyright 1910 by G. Schirmer.

33 (Title) THERE IS FOR EACH OF US ..... Erotik (Grieg) .....1 1/2 Min.

Musical notation for Erotik (Grieg), Lento Molto, copyright by Carl Fischer.

34 (Action) HAMILTON AND WIFE ..... Repeat No. 5 "Swanee Butterfly" .....1 Min.

Musical notation for Repeat No. 5 "Swanee Butterfly", Mod<sup>o</sup>.

35 (Action) WIFE TURNS AND SEES HUSBAND ..... Prelude from First Suite "Carmen" (Bizet) .....1 3/4 Min.

Musical notation for Prelude from First Suite "Carmen" (Bizet), And<sup>te</sup> Mod<sup>o</sup>, copyright 1914 by Carl Fischer.

36 (Action) ALICES' APARTMENT— MOTHER ENTERS ROOM ..... Plaintive (O'Hare) .....1 Min.

Musical notation for Plaintive (O'Hare), And<sup>te</sup>.

37 (Action) STEAMER— MORRELL ON DECK ..... Tragic Andante (Savino) .....1 1/2 Min.

Musical notation for Tragic Andante (Savino), And<sup>te</sup>, copyright 1923 by G. Schirmer.

38 (Action) FLASH BACK TO HOME—FRED ENTERS.... Dram. Agitato No. 1 (Egener) .....1 1/4 Min.

Musical notation for Dram. Agitato No. 1 (Egener), All<sup>o</sup> mod<sup>o</sup> con trappo, copyright 1916 by Sonnemann Music Co.

39 (Action) FRED HANGS UP RECEIVER ..... What'll I Do (Berlin) .....1 Min.

Musical notation for What'll I Do (Berlin), Valse Mod<sup>o</sup>, copyright 1923 by Irving Berlin.

40 (Action) ALICE APPEARS ..... Repeat No. 31 "Love Song" ..... 3/4 Min.

III Musical notation for Repeat No. 31 "Love Song", And<sup>te</sup>, In Love.

41 (Action) FRED SEES ALICE ..... Repeat Theme No. 6 .....1 1/2 Min.

IV Musical notation for Repeat Theme No. 6, Valse lento.

THE END

Country of Origin, U. S. A.

Complete Orchestrations and single parts of all compositions contained herein can be purchased from CAMEO MUSIC SERVICE CORPORATION, 112-118 West 44th Street, New York City

95:2360:1