

M.J. MINTZ (PATENT)
JULY 31, 1923.



Adolph Zukor and Jesse L. Lasky
present

"STARK LOVE"

A Karl Brown Production

Story by Karl Brown

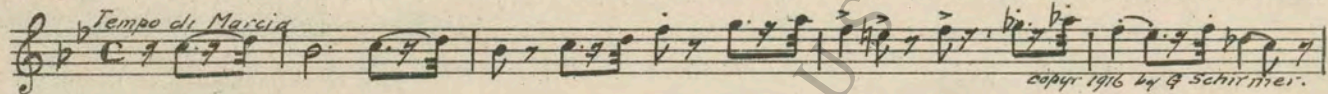
Adaptation by Walter Woods

Compiled by James C. Bradford

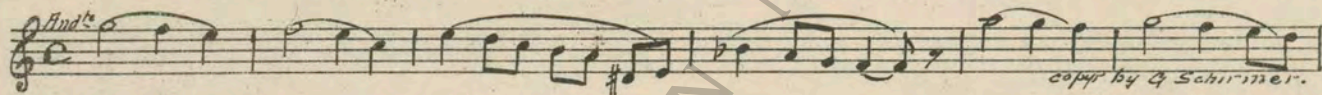
Footage 6203 feet

A Paramount Picture

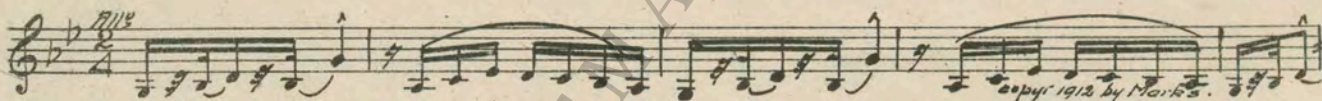
1. AT SCREENING ROB THEME: Marche Miniature (Jacobi) 1 Min.



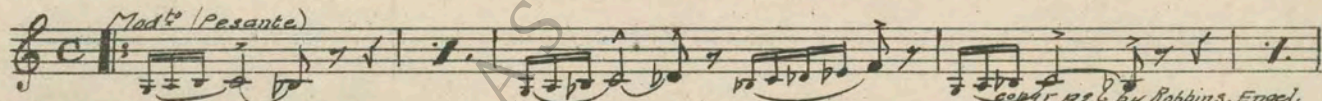
2. (Action) MOUNTAIN SCENE On the Mountain from "Poetical Scenes" (Godard) 1/2 Min.



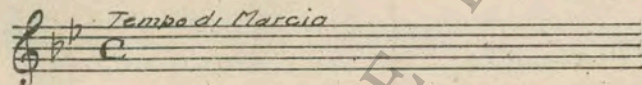
3. (Action) FADE-OUT OF SECOND SHACK SCENE Down South (Myddleton) (Banjo Effect) 1/4 Min.



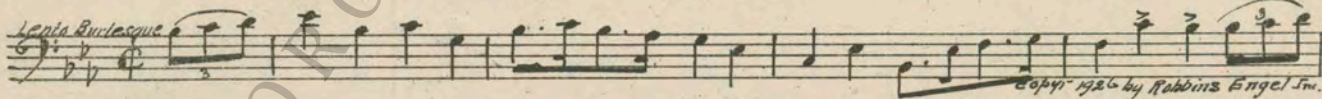
4. (Title) IMPRISONED BY WORK THEME: The Toilers (Axt) 1 1/2 Min.



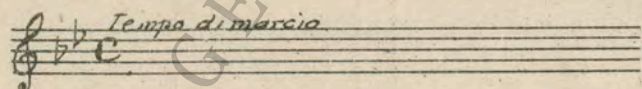
5. (Title) AMONG THE Repeat Rob Theme No. 1 1/2 Min.



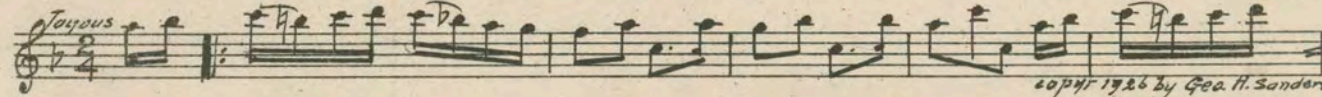
6. (Title) ONE OF THE WORKERS RUBE THEME: The Village Clown (Axt) 1/4 Min.



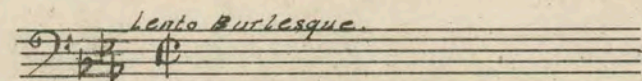
7. (Action) FADE-BACK TO ROB Repeat Rob Theme No. 1 1/4 Min.



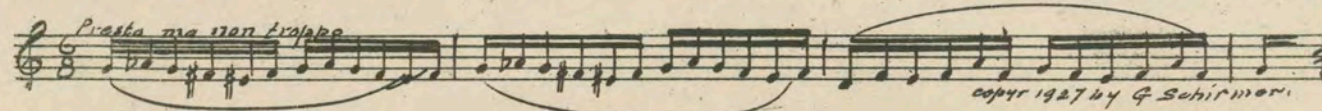
8. (Action) FADE-BACK TO LEN Happy Hectic Hours (Schad) 3/4 Min.



9. (Action) BARB'RY ARGUES WITH LEN Repeat Rube Theme No. 6 1 Min.



10. (Action) LEN TURNS ON WATER IN MILL Spinning Song (Mendelssohn) 1 Min.



- 11. (Action) PIPE DROPS INTO WATEROrchestra Tacet¼ Min.
- 12. (Title) WOMEN DON'T SWEARRepeat Rob Theme No. 11½ Min.
- 13. (Action) CLOSE-UP OF FLY ON GIRL'S LEGRepeat Rube Theme No. 61¼ Min.
NOTE: Catch effect of slap on leg.
- 14. (Action) ROB TAKES BAG FROM BARB'RYRepeat Rob Theme No. 1½ Min.
- 15. (Action) CHANGE OF SCENERepeat Rube Theme No. 62 Min.
- 16. (Action) FADE-OUT OF WARWICK AFTER MEN
AT FIREPLACERepeat Rob Theme No. 11¾ Min.
- 17. (Action) LEN IS SEEN AFTER TITLE:
"YOU'RE RIGHT"The Chatterbox (Sanders)¾ Min.

It's wagging tongue

copyr 1927 by Geo. H. Sanders.

- 18. (Action) BARB'RY SLAPS LENFlying Hurry (Carbonara)¾ Min.

Vivace

copyr 1926 by Robbins & Roger.

- 19. (Action) BARB'RY LEAVES WITH AXERepeat Work Theme No. 41 Min.

Molto Pesante.

- 20. (Title) THE WARWICK CABINMystic Andante (Sibelius)1½ Min.

Andante

copyr 1925 by Schlesinger.

- 21. (Title) LEMME DO IT MAMOTHER THEME: Mother's Theme from "Enemies of Women" (Peters)½ Min.

Andante Molto con affetto

copyr 1923 by Richmond Robbins.

- 22. (Title) THE EVENING MEALAt An Old Trysting Place from "Woodland Sketches" (McDowell)1¼ Min.

Semplice

copyr 1923 by Arthur F. Schmidt.

- 23. (Action) OLD MAN LEAVESDans la Montagne (Fourdrain)1¼ Min.

Largo assai.

- 24. (Action) DARK SCENE—ROB ON FLOORRepeat Mother Theme No. 21½ Min.

Andante Molto con affetto

- 25. (Title) ONCE A YEARRepeat No. 23 "Dans la Montagne"¼ Min.

Semplice

- 26. (Action) CLOSE-UP OF FOOTRepeat Rube Theme No 61¼ Min.

Lento Burlesque.

- 27. (Action) ROB COMES UP TO PARSONRepeat Rob Theme No. 1½ Min.

Tempo di Marcia.

- 28. (Action) ROB LEAVES PARSONAdagio Cantabile (Ketelbey)¾ Min.

Adagio cantabile.

copyr 1925 by Bosworth & Co.

29. (Title) HOW MANY TO BE MARRIED Orchestra Tacet ½ Min.
 30. (Action) FADE-IN ROB AND BARB'RY Repeat Rob Theme No. 1 ½ Min.
 31. (Title) I'D GIVE ANYTHING Andante Amoroso (Axt) ½ Min.

32. (Action) ROB STANDS UP Repeat Rob Theme No. 1 1 Min.

33. (Action) FADE-IN PARSON Repeat Rube Theme No. 6 1¼ Min.

34. (Action) ROB AND PARSON RIDING DOWN MOUNTAIN No. 1 from "Suite from the South" (Nicode) 1¼ Min.

35. (Action) FADE-IN BARB'RY CHOPPING WOOD Repeat Work Theme No. 4 ¾ Min.

36. (Action) CLOSE-UP—BARB'RY LOOKS UP Pastel Menuet (Paradis) 1 Min.

37. (Action) HANDS STICK ON DRESS Repeat Work Theme No. 4 1 Min.

38. (Action) FADE TO BARB'RY DRESSING Repeat Rob Theme No. 1 1¼ Min.

39. (Title) WHILE ROB WAS AWAY Lamento from Pique Dame (Tschaikowsky) 1½ Min.

40. (Action) FADE-IN ROB Moonlight Memories (Edwards) 1¼ Min.

41. (Action) WARWICK SPEAKS TO WIDOW The Joker (Srawley) ½ Min.

42. (Action) BARB'RY ENTERS WARWICK'S CABIN Gaily Thro' Life (Schad) 2½ Min.

43. (Action) BARB'RY WASHING DISHES—WARWICK STANDS UP Melancholie (Schwider) 2¼ Min.

44. (Action) FADE-IN ROB Piangere (Gabriel Marie) 1 1/4 Min.
Lento
 copyr 1926 Chapelier.
45. (Action) BARB'RY ENTERS CABIN Souvenir d'Amour (Conte) 2 1/4 Min.
Mod^{to}
 copyr 1924 by G. Schirmer.
46. (Action) FADE-IN ROB Appassionato No. 4 (Axt) 1 Min.
All.^o Appass
 copyr 1926 by Robbins - Engel.
47. (Action) ROB ENTERS CABIN Despair (Kalbe) 1 1/2 Min.
Largamente
 copyr 1925 by Heinrichshofen.
48. (Action) BARB'RY AND WARWICK SEEN Repeat No. 43 "Melancholie" 2 1/4 Min.
 49. (Action) BARB'RY SEES ROB Repeat No. 47 "Despair" 2 1/2 Min.
 50. (Action) WARWICK STANDS UP Infamy (Conterno) 1 1/4 Min.
51. (Action) WARWICK GOES TO DOOR In the Night—Death Speaketh (Noack) 1 1/4 Min.
Slowly and with anger. *Fast*
 copyr 1926 by Lipskin.
52. (Title) I AIN'T GOING TO LET YOU Disperazione (Bece) 2 1/4 Min.
And^{te} Largo
 copyr 1926 by Heinrichshofen.
53. (Action) ROB ON FLOOR IN PAIN The Hour of Ghosts (Bece) 3/4 Min.
Molto largo
 copyr 1926 by Schlesinger.
54. (Action) ROB GRABS GUN Allegro Impetuoso (La Paglia) 1 1/4 Min.
And^{te} Largo
 copyr 1926 Schlesinger.
55. (Action) SHOT Facing Death (Bece) 1 1/4 Min.
Furioso
 copyr 1927 by G&J. Lipskin.
56. (Action) BARB'RY GRABS AXE Grand Appassionato (Bece) 1 1/2 Min.
And^{te} Largo *Bassi*
 copyr 1926 by Schlesinger.
57. (Action) BARB'RY RUNS OUT The Tempest (Zamecnik) 1 3/4 Min.
All.^o
 copyr 1926 by Sam Fox.
58. (Title) MORNING Repeat Rob Theme No. 1 1 Min.
Tempo di Marcia

THE END

Country of Origin, U. S. A.

Orchestrations or single piano parts of each separate musical selection suggested hereon, can be purchased from CAMEO MUSIC SERVICE CORPORATION, 315-317 WEST 47TH STREET, NEW YORK CITY.

95:2473: