

Monday July 18/27

Thematic Music Cue Sheet

M. J. MINTZ (PATENT) JULY 31, 1923.



Adolph Zukor and Jesse L. Lasky present

"STARK LOVE"

A Karl Brown Production

Story by Karl Brown

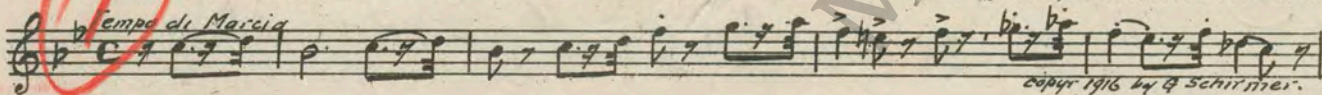
Adaptation by Walter Woods

Compiled by James C. Bradford

Footage 6203 feet

A Paramount Picture

- 1. AT SCREENING ... ROB THEME: Marche Miniature (Jacobi) ... 1 Min.



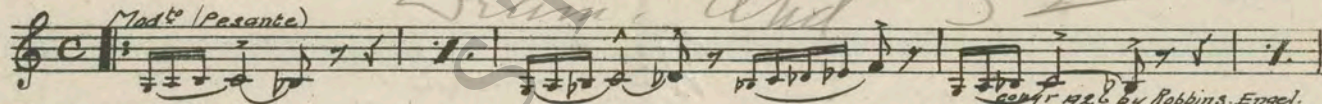
- 2. (Action) MOUNTAIN SCENE ... On the Mountain from "Poetical Scenes" (Godard) ... 1/2 Min.



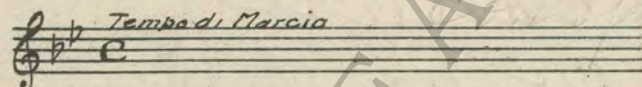
- 3. (Action) FADE-OUT OF SECOND SHACK SCENE ... Down South (Myddleton) (Banjo Effect) ... 1/4 Min.



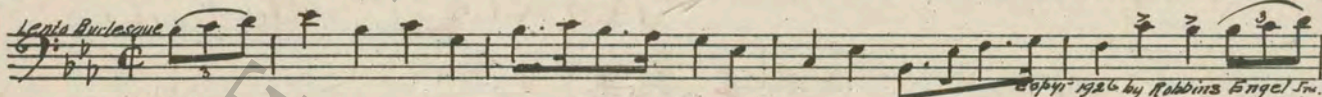
- 4. (Title) IMPRISONED BY ... WORK THEME: The Toilers (Axt) ... 1 1/2 Min.



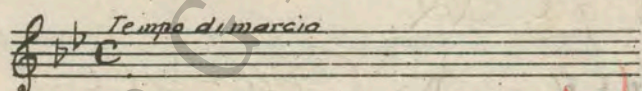
- 5. (Title) AMONG THE ... Repeat Rob Theme No. 1 ... 1/2 Min.



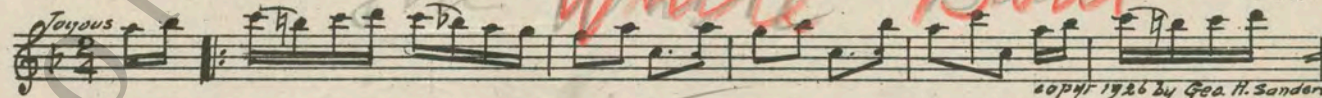
- 6. (Title) ONE OF THE WORKERS ... RUBE THEME: The Village Clown (Axt) ... 1/4 Min.



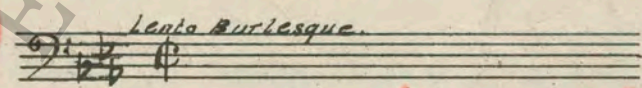
- 7. (Action) FADE-BACK TO ROB ... Repeat Rob Theme No. 1 ... 1/4 Min.



- 8. (Action) FADE-BACK TO LEN ... Happy Frictic Hours (Schad) ... 3/4 Min.



- 9. (Action) BARB'RY ARGUES WITH LEN ... Repeat Rube Theme No. 6 ... 1 Min.



- 10. (Action) LEN TURNS ON WATER IN MILL ... Spinning Song (Mendelssohn) ... 1 Min.



Handwritten red circles and numbers: 1, 2, 1, 2

Handwritten red text: "The White Bird" and "By the mill stream"

11. (Action) PIPE DROPS INTO WATER ..... Orchestra Tacet ..... ¼ Min.  
 12. (Title) WOMEN DON'T SWEAR ..... Repeat Rob Theme No. 1 ..... 1½ Min.  
 13. (Action) CLOSE-UP OF FLY ON GIRL'S LEG ..... Repeat Rube Theme No. 6 ..... 1¼ Min.  
 NOTE: Catch effect of slap on leg.  
 14. (Action) ROB TAKES BAG FROM BARB'RY ..... Repeat Rob Theme No. 1 ..... ½ Min.  
 15. (Action) CHANGE OF SCENE ..... Repeat Rube Theme No. 6 ..... 2 Min.  
 16. (Action) FADE-OUT OF WARWICK AFTER MEN  
 AT FIREPLACE ..... Repeat Rob Theme No. 1 ..... 1¾ Min.  
 17. (Action) LEN IS SEEN AFTER TITLE:  
 "YOU'RE RIGHT" ..... The Chatterbox (Sanders) ..... ¾ Min.

*It's wagging tongue*

copyr 1927 by Geo. H. Sanders.

18. (Action) BARB'RY SLAPS LEN ..... Flying Hurry (Carbonara) ..... ¾ Min.

*Vivace*

copyr 1926 by Robbins Klinger.

19. (Action) BARB'RY LEAVES WITH AXE ..... Repeat Work Theme No. 4 ..... 1 Min.

*Mod<sup>to</sup> Pesante.*

20. (Title) THE WARWICK CABIN ..... Mystic Andante (Sibelius) ..... 1½ Min.

*And<sup>to</sup>*

copyr 1925 by Schlesinger.

21. (Title) LEMME DO IT MA ..... MOTHER THEME: Mother's Theme from "Enemies of Women" (Peters) ..... ½ Min.

*And<sup>to</sup> Mod<sup>to</sup> con affetto*

copyr 1923 by Richmond Robbins.

22. (Title) THE EVENING MEAL ..... At An Old Trysting Place from "Woodland Sketches" (McDowell) ..... 1¼ Min.

*Simplice*

copyr 1923 by Arthur P. Schmidt.

23. (Action) OLD MAN LEAVES ..... Dans la Montagne (Fourdrain) ..... 1¼ Min.

*Largo ass<sup>to</sup>*

24. (Action) DARK SCENE—ROB ON FLOOR ..... Repeat Mother Theme No. 21 ..... ½ Min.

*And<sup>to</sup> Mod<sup>to</sup> con affetto*

25. (Title) ONCE A YEAR ..... Repeat No. 23 "Dans la Montagne" ..... ¼ Min.

*Simplice*

26. (Action) CLOSE-UP OF FOOT ..... Repeat Rube Theme No 6 ..... 1¼ Min.

*Lento Burlesque.*

27. (Action) ROB COMES UP TO PARSON ..... Repeat Rob Theme No. 1 ..... ½ Min.

*Tempo di Marcia.*

28. (Act cn) ROB LEAVES PARSON ..... Adagio Cantabile (Ketelbey) ..... ¾ Min.

*Adagio cantabile*

copyr 1925 by Bosworth & Co.

Tacet

Tacet  
And Dram 23

- 29. (Title) HOW MANY TO BE MARRIED ..... Orchestra Tacet ..... 1/2 Min.
- 30. (Action) FADE-IN ROB AND BARB'RY ..... Repeat Rob Theme No. 1 ..... 1/2 Min.
- 31. (Title) I'D GIVE ANYTHING ..... Andante Amoros (Axt) ..... 1/2 Min.

And<sup>te</sup>

copyr 1926 by Robbins Engel.

- 32. (Action) ROB STANDS UP ..... Repeat Rob Theme No. 1 ..... 1 Min.

1

Tempo di Marcia

- 33. (Action) FADE-IN PARSON ..... Repeat Rube Theme No. 6 ..... 1 1/4 Min.

2

Lento Burlesque

- 34. (Action) ROB AND PARSON RIDING DOWN MOUNTAIN ..... No. 1 from "Suite from the South" (Nicode) ..... 1 1/4 Min.

And<sup>te</sup>

copyr 1910 by G. Schirmer.

- 35. (Action) FADE-IN BARB'RY CHOPPING WOOD ..... Repeat Work Theme No. 4 ..... 3/4 Min.

Moder<sup>o</sup>

Dram, and 24

- 36. (Action) CLOSE-UP-BARB'RY LOOKS UP ..... Pastel Mennet (Paradis) ..... 1 Min.

All<sup>ro</sup> giocoso

copyr 1911 by Jungnickel.

- 37. (Action) HANDS STICK ON DRESS ..... Repeat Work Theme No. 4 ..... 1 Min.

Moder<sup>o</sup>

Dram, Recitativo 3

- 38. (Action) FADE TO BARB'RY DRESSING ..... Repeat Rob Theme No. 1 ..... 1 1/4 Min.

1

Tempo di Marcia

- 39. (Title) WHILE ROB WAS AWAY ..... Lamento from Pique Dame (Tschaikowsky) ..... 1 1/2 Min.

And<sup>te</sup> non tanto

copyr 1926 by Manus Music Co.

- 40. (Action) FADE-IN ROB ..... Moonlight Memories (Edwards) ..... 1 1/4 Min.

Moder<sup>o</sup>

copyr 1926 by Robbins Robbins.

- 41. (Action) WARWICK SPEAKS TO WIDOW ..... The Joker (Srawley) ..... 1/2 Min.

Moder<sup>o</sup>

copyr 1926 by G. H. Sanders.

- 42. (Action) BARB'RY ENTERS WARWICK'S CABIN ..... Gaily Thro' Life (Schad) ..... 2 1/2 Min.

Moder<sup>o</sup>

Madrigal

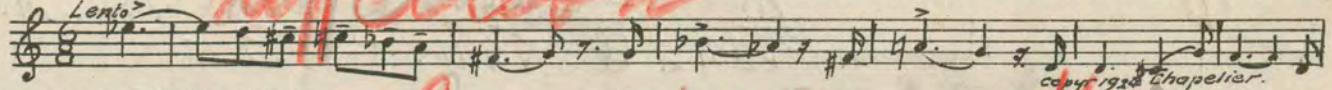

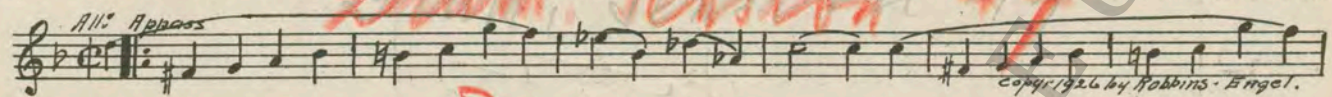
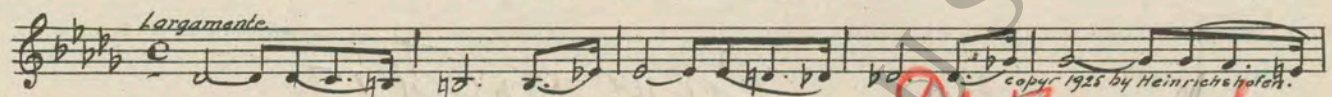
copyr 1926 by Geo. H. Sanders.

- 43. (Action) BARB'RY WASHING DISHES-WARWICK STANDS UP ..... Melancholie (Schwider) ..... 2 1/4 Min.


Moder<sup>o</sup>

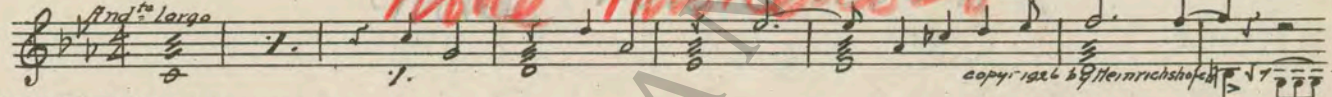
Romance in F

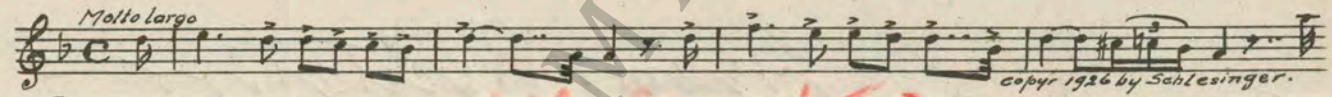
copyr 1926 by Heinrich Hofen.

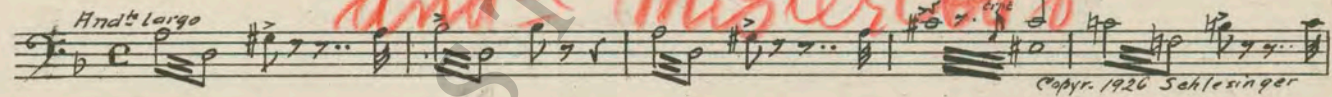
44. (Action) FADE-IN ROB ..... *Affettuoso* Piangere (Gabriel Marie) ..... 1¼ Min.  

*Lento*  
copyr 1928 Chapellier.
45. (Act on) BARB'RY ENTERS CABIN ..... *Serenade* Souvenir d'Amour (Conte) ..... 2¼ Min.  

*Mod<sup>to</sup>*  
copyr 1924 by G Schirmer.
46. (Action) FADE-IN ROB ..... *Dram. Tension* Appassionato No. 4 (Axt) ..... 1 Min.  

*All<sup>o</sup> Appass*  
copyr 1926 by Robbins - Engel.
47. (Action) ROB ENTERS CABIN ..... *2* Despair (Kalbe) ..... 1½ Min.  

*Largamente*  
copyr 1925 by Heinrichshofen.
48. (Action) BARB'RY AND WARWICK SEEN ..... Repeat No. 43 "Melancholie" ..... 2¼ Min.  

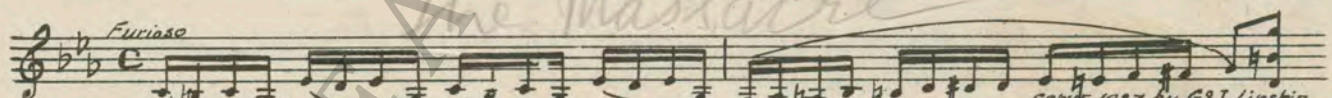
49. (Action) BARB'RY SEES ROB ..... Repeat No. 47 "Despair" ..... 2½ Min.  

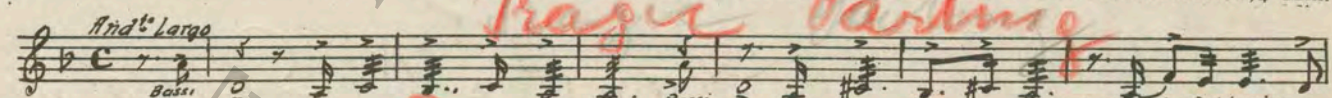
50. (Action) WARWICK STANDS UP ..... Infamy (Conterno) ..... 1¼ Min.  

*Slowly and with anger* *And Appass<sup>o</sup>* *fast*  
copyr 1926 by Lipstkin.

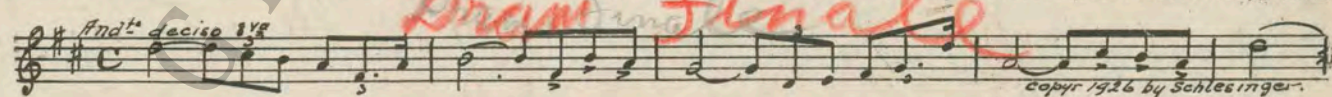
51. (Action) WARWICK GOES TO DOOR ..... *Notte Misteriosa* In the Night—Death Speaketh (Noack) ..... 1¼ Min.  

*And<sup>te</sup> largo*  
copyr 1926 by Heinrichshofen.

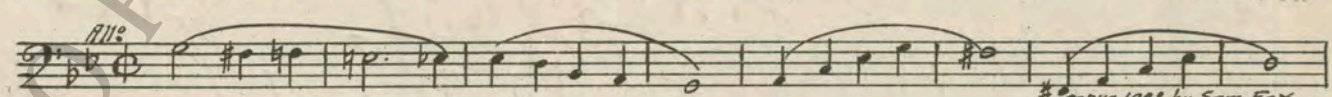
52. (Title) I AIN'T GOING TO LET YOU ..... Disperazione (Bece) ..... 2¼ Min.  

*Molto largo*  
copyr 1926 by Schlesinger.

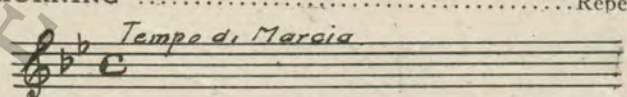
53. (Action) ROB ON FLOOR IN PAIN ..... *and Misterioso* The Hour of Ghosts (Bece) ..... ¾ Min.  

*And<sup>te</sup> largo*  
copyr 1926 Schlesinger

54. (Action) ROB GRABS GUN ..... *The Massacre* Allegro Impetuoso (La Paglia) ..... 1¼ Min.  

*Furioso*  
copyr 1927 by G.S. Lipstkin

55. (Action) SHOT ..... *Tragic Parting* Facing Death (Bece) ..... 1¼ Min.  

*And<sup>te</sup> largo*  
*Bassi*  
copyr 1926 by Schlesinger.

56. (Action) BARB'RY GRABS AXE ..... *Dram. Finale* Grand Appassionato (Bece) ..... 1½ Min.  

*And<sup>te</sup> deciso 3/8*  
copyr 1926 by Schlesinger.

57. (Action) BARB'RY RUNS OUT ..... The Tempest (Zamecnik) ..... 1¾ Min.  

*All<sup>o</sup>*  
copyr 1928 by Sam Fox.

58. (Title) MORNING ..... Repeat Rob Theme No. 1 ..... 1 Min.  

*Tempo di Marcia*

THE END

Country of Origin, U. S. A.

Orchestrations or single piano parts of each separate musical selection suggested hereon, can be purchased from CAMEO MUSIC SERVICE CORPORATION, 315-317 WEST 47TH STREET, NEW YORK CITY.