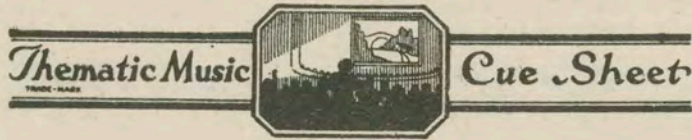


334



M. J. MINTZ (PATENT)
JULY 31, 1923.

C. C. Burr
presents
JOHNNY HINES
in
'STEPPING ALONG'
with
MARY BRIAN
Music compiled by James C. Bradford
A FIRST NATIONAL PICTURE

Red mill

1 AT SCREENING The Streets of New York (Herbert) 1½ Min.

Marcia

Copyr. 1916 Witmark & Sons

2 (Title) GET READY BOYS

Copyr. 1925 Shapiro Bernstein Co

5 (Action) JOHNNY ENTERS HOUSE I'm Lonely Without You (Green) 2½ Min.

Mod^{to}

Copyr. 1926 Shapiro Bernstein Co

6 (Title) FAY ALLEN—PAT O'TOOLE Syncopation (Kreisler) 1 Min.

All^{to} grazioso

Copyr. Carl Fischer

7 (Action) POLITICAL MEETING There'll Be a Hot Time (Beyer) 2 Min.

Marcia

Copyr. Carl Fischer

8 (Title) BOSS O'BRIEN WANTS YOU TO BE My Sweetie Turned Me Down (Donaldson) ½ Min.

Mod^{to}

Copyr. 1925 Irving Berlin

9 (Title) THE ANNUAL MEETING The Racket at Gilligan's (DeWitt) 1¼ Min.

f^{ff}

Copyr. 1896 Carl Fischer

NOTE: Start at 9/8 and keep repeating until next cue; catch falls, etc., ad lib.

10 (Title) MEANWHILE AT THE MIDGET THEATRE... Rock-a-bye Baby Days (Silver)1 Min.

Mod^{to}
 Copyr. 1924 Leo Feist

11 (Title) MEN, I HAVE PASSES FOR STEEPLECHASE Zip (Frey)4 Min.

Galop
 Copyr. 1925 Robbins Engel

SEGUE By Wireless (Berge).

Galop
 Copyr. 1925 Robbins Engel

12 (Title) EVERYTHING IS SPEECHES The Irish Dragoons (De Ville)1½ Min.

Marcia
 Copyr. 1908 Carl Fischer

13 (Title) NERVOUS AS I AMTHEME: Yankee Doodle Boy (Cohan)1½ Min.

14 (Title) THAT EVENING When Irish Eyes Are Smiling (Ball)¾ Min.

Valse
 Copyr. Witmark & Sons

15 (Action) BOSS AND FRIEND AT TABLE Wearing of the Green from "Shamrock" (Brewer)½ Min.

All^{to}
 Copyr. 1910 Sam Fox

16 (Action) GIRL RIDING IN CAR Me and the Boy Friend (Monaco)1¼ Min.

Mod^{to}
 Copyr. 1924 Remick & Co

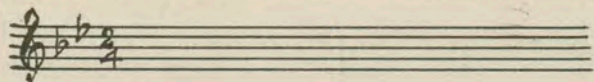
17 (Title) HOW DARE YOU ENTER I'm Walking Around In Circles (Phillips)1¼ Min.

Mod^{to}
 Copyr. 1926 Leo Feist

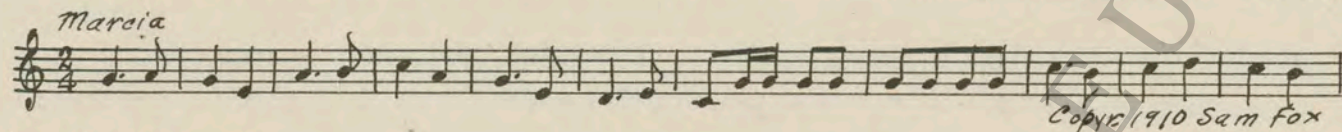
18 (Action) JOHNNY STARTS TO DANCE Charleston (Johnson)½ Min.

Jazz
 Copyr. 1923 Harms Inc.

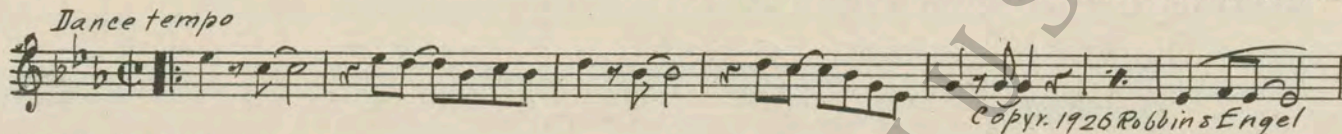
19 (Action) HE STOPS DANCING Repeat Theme No. 13 1 Min.



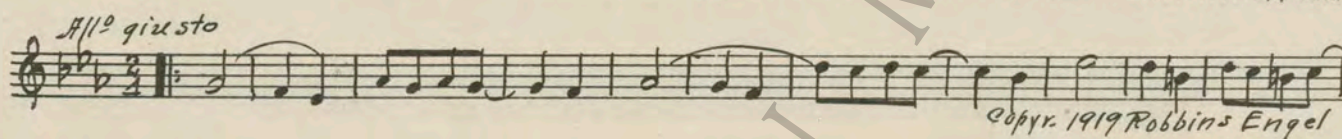
20 (Title) BOSS O'TOOLE SECURED FRONT PARLOR.. Shamrock (Brewer) 1 1/4 Min.



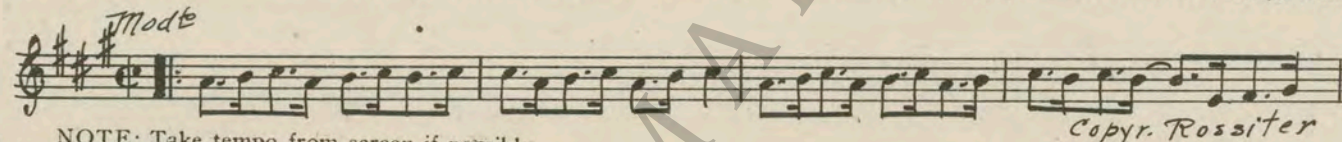
21 (Title) THE OPENING NIGHT Jig Walk (Ellington) 3/4 Min.



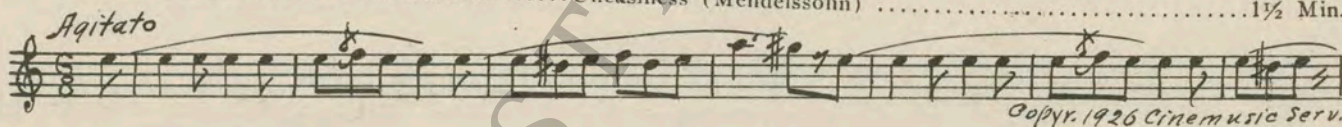
22 (Action) JOHNNY AT STAGE DOOR Somebody (Little) 2 3/4 Min.



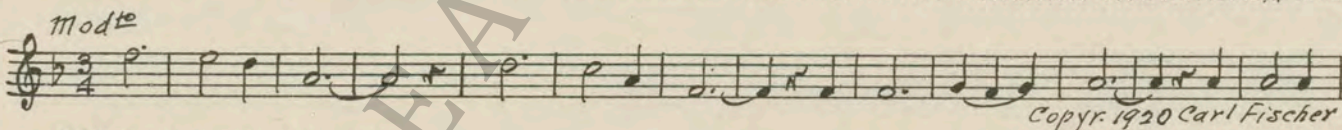
23 (Title) NO SPEECH, JOHNNY Down Home Rag (Sweetman) 2 1/2 Min.



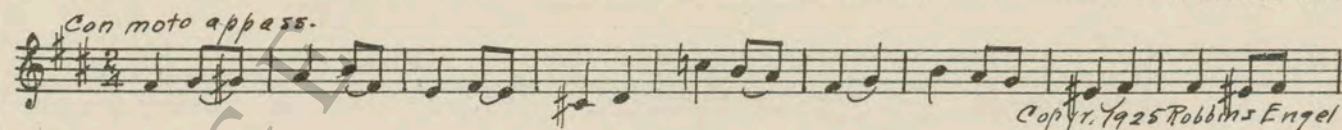
24 (Title) WHERE'S MISS TAYLOR'S DRESSING ROOM Uneasiness (Mendelssohn) 1 1/2 Min.



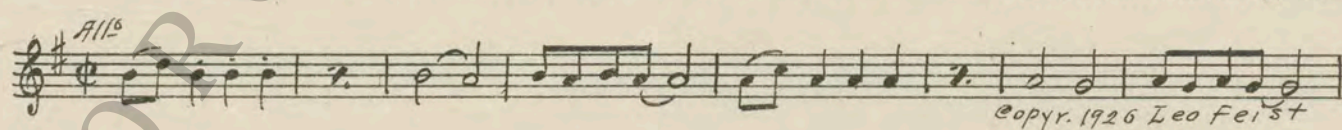
25 (Action) MOLLY STARTS DANCE Old Chestnuts (Lake) 1 1/4 Min.



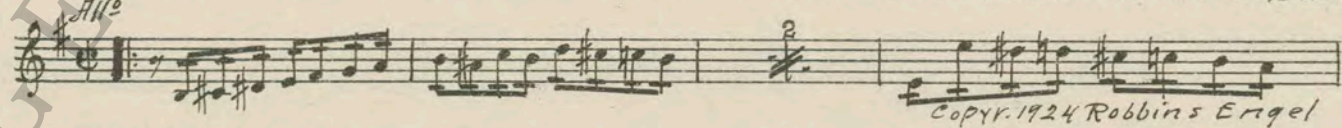
26 (Action) MOLLY ENTERS DRESSING ROOM Appassionato Dramatico (Berge) 1 1/2 Min.



27 (Action) INSERT—NOTE TO JOHNNY After I Say I'm Sorry (Donaldson) 3/4 Min.



28 (Title) I TELL YOU MORELAND Allegro Mysterioso (Axt) 2 1/2 Min.



29 (Title) A REPORTER WANTS A SKETCH Scherzando Hurry (Frey) 2 Min.



30 (Title) NEVER MIND, FRANK MORELAND HAS.....Aces High (Boulton)3/4 Min.

Musical notation for "NEVER MIND, FRANK MORELAND HAS.....Aces High (Boulton)". The notation is in treble clef, 2/4 time, with a key signature of one sharp (F#). The tempo/mood is marked "Marcia". The copyright notice is "Copyr. 1918 Belwin".

31 (Title) FERDINAND DAREWSKEY Echoes from Poland (Nowicki)1 1/4 Min.

Musical notation for "FERDINAND DAREWSKEY Echoes from Poland (Nowicki)". The notation is in treble clef, 2/4 time, with a key signature of one sharp (F#). The tempo/mood is marked "Marcia". The copyright notice is "Copyr. 1913 Carl Fischer".

32 (Action) IN AUTO-WILD RIDE Mounted Police Galop (LeThiere)3 3/4 Min.

Musical notation for "IN AUTO-WILD RIDE Mounted Police Galop (LeThiere)". The notation is in treble clef, 2/4 time, with a key signature of one sharp (F#). The tempo/mood is marked "Galop". A note above the staff reads "NOTE: Start at Trio.". The copyright notice is "Copyr. 1925 Hawkes & Son".

33 (Action) GIRL ENTERS EDITOR'S OFFICE Entotional Agitato (Savino)1 1/4 Min

Musical notation for "GIRL ENTERS EDITOR'S OFFICE Entotional Agitato (Savino)". The notation is in treble clef, 6/8 time, with a key signature of one sharp (F#). The tempo/mood is marked "All^o". A note above the staff reads "NOTE: Racing car effects—horn ad lib.". The copyright notice is "Copyr. 1925 Robbins Engel".

34 (Title) I OWE YOU SOMETHING Six Furlongs (Bub)4 3/4 Min.

Musical notation for "I OWE YOU SOMETHING Six Furlongs (Bub)". The notation is in treble clef, 2/4 time, with a key signature of one sharp (F#). The tempo/mood is marked "Galop". The copyright notice is "Copyr. 1925 Music Buyers Corp".

SEGUE Aeroplane Galop (Lamothe).

Musical notation for "SEGUE Aeroplane Galop (Lamothe)". The notation is in treble clef, 2/4 time, with a key signature of one sharp (F#). The tempo/mood is marked "Galop". The copyright notice is "Copyr. 1925 Hawkes & Son".

35 (Action) NIGHT PARADE Repeat No. 7 "There'll Be a Hot Time"1 1/4 Min.

Musical notation for "NIGHT PARADE Repeat No. 7 'There'll Be a Hot Time'". The notation is in treble clef, 2/4 time, with a key signature of one sharp (F#). The tempo/mood is marked "Marcia".

SEGUE Yankee Doodle Boy (Cohan).

Musical notation for "SEGUE Yankee Doodle Boy (Cohan)". The notation is in treble clef, 2/4 time, with a key signature of one sharp (F#). The tempo/mood is marked "Marcia". The copyright notice is "Copyr. 1915 Robbins Engel".

36 (Title) LET'S MAKE HIM DANCE Repeat No. 4 "Down By the Winegar Works"1/2 Min.

Musical notation for "LET'S MAKE HIM DANCE Repeat No. 4 'Down By the Winegar Works'". The notation is in treble clef, 3/4 time, with a key signature of two flats (Bb, Eb). The tempo/mood is marked "Valse".

37 (Action) JOHNNY EMBRACES MOLLY Here I Am (Henderson)1/2 Min.

Musical notation for "JOHNNY EMBRACES MOLLY Here I Am (Henderson)". The notation is in treble clef, 2/4 time, with a key signature of one sharp (F#). The tempo/mood is marked "Moderato". The copyright notice is "Copyr. 1926 Remick & Co".

THE END

Printed in U. S. A.

Orchestrations or single piano parts of each separate musical selection suggested hereon, can be purchased from CAMEO MUSIC SERVICE CORPORATION, 315-317 WEST 47TH STREET, NEW YORK CITY.

95:2476:1