

1927
60/45/1105
11/2

Thematic Music **Cue Sheet**

M. J. MINTZ (PATENT)
JULY 31, 1923



RAMON NOVARRO
and
NORMA SHEARER
in
AN ERNST LUBITSCH PRODUCTION
THE STUDENT PRINCE
IN OLD HEIDELBERG

with
Jean Hersholt
Continuity by Hans Kraly
From the book "Karl Heinrich" by Meyer Forster
Directed by Ernst Lubitsch
Compiled by Ernst Luz
A METRO-GOLDWYN-MAYER PICTURE

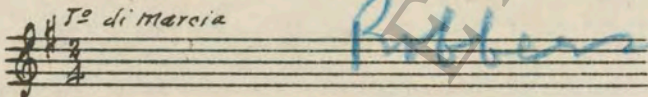
Length of film 10 reels (9480 feet) Maximum projection time 1 hour, 45 minutes

- 1 **AT SCREENING** Play "Student Prince" Selection (PURPLE) (Harms) 1 Min.
- 2 (Title) **IN THE KINGDOM OF KARLSBURG** Play Drinking Song from "Student Prince" (BROWN) (Harms) 1 Min.
- 3 (Action) **CLOSE-UP OF PORTRAIT ON WALL** Ruritania (Schertzinger) 1/2 Min.

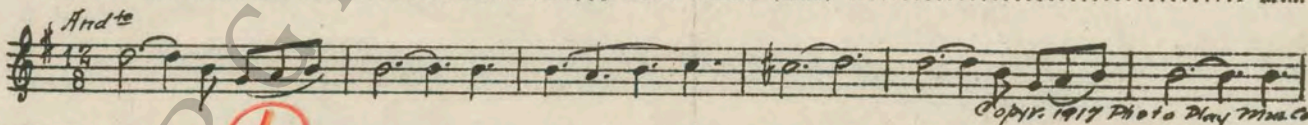


NOTE: Play last 32 bars.

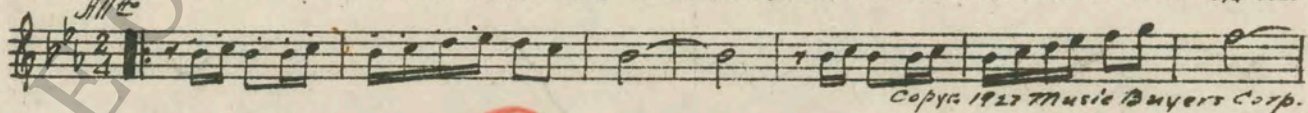
- 4 (Action) **INTERRUPT WITH DRUM ROLL** Repeat No. 1 (PURPLE) 1/2 Min.
- 5 (Action) **INTERRUPT WITH TRAIN EFFECT** Train Effect by Drummer 1/4 Min.
- 6 (Action) **ONE SCENE** Repeat No. 1 (PURPLE) 1 Min.
- 7 (Action) **SOLDIERS GET OUT OF TRAIN** Play Serenade from "Student Prince" (DK. GREEN) (Harms) 1 1/4 Min.
- 8 (Action) **LONG SHOT OF CARRIAGE WAITING FOR YOUNG PRINCE** Repeat No. 3 "Ruritania" (last 32 bars) 1 Min.



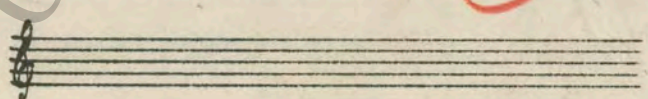
- 9 (Action) **FADE-OUT OF PRINCE IN CARRIAGE WAVING TO BOYS ON STREET** Repeat No. 7 (DK. GREEN) 2 Min.
- 10 (Action) **YOUNG PRINCE AT GATE AFTER CARRIAGE DRIVES OFF** Poppy Love Theme (Luz) 1 Min.



- 11 (Action) **KING WALKS OFF** Play Just We Two from "Student Prince" (LT. GREEN) (Harms) 1/2 Min.
- 12 (Action) **DOCTOR JUTNER AND BOY ON WITH BUTLERS** Happy Moods (Marquardt) 1/4 Min.



- 13 (Action) **FADE-OUT OF DOCTOR AND YOUNG PRINCE PLAYING WITH BALL** Repeat No. 7 (DK. GREEN) 1 1/4 Min.



14 (Action) PRINCE HITS DOCTOR WITH PILLOW Enchantment (Penn) 2 Min.

All^{to} mod^{to}

Copyright 1926 Emil Ascher

15 (Action) NEWSPAPER ARTICLE ON SCREEN A Gay Lothario (Bierman) 2 1/2 Min.

Mod^{to} con grazio^{so}

Copyright 1927 American Composers Inc

16 (Action) TUTOR WALKS OUT OF ROOM AFTER COMMITTEE REPORTS Simple Meditation (DeSmetsky) 1 1/2 Min.

And^{ino}

Copyright Ludwig Music Pub. Co

6 17 (Action) BUTLER KNOCKS ON DOOR Repeat No. 11 (LT. GREEN) 1 Min.
 18 (Action) FADE-OUT OF PRINCE SEATED IN CHAIR Paragraphs (Fall) 1 Min.

All^{to}

Emil Ascher

5 19 (Action) TRAIN EFFECT AT TITLE: "HEIDELBERG" Train Effect by Drummer 1/4 Min.
 20 (Action) TRAIN STOPS—PRINCE SHOWS Play Student's March from "Student Prince" (YELLOW) (Harms) 1 1/2 Min.

2 21 (Action) CARRIAGE STOPS AT INN Repeat No. 7 (DK. GREEN) 2 Min.
 22 (Action) GIRL HANDS PRINCE BOUQUET OF FLOWERS Summer Skies (Loth) 3 1/2 Min.

Allo^{to} mod^{to}

Copyright 1927 American Composers Inc

3 23 (Title) I THINK THE ROOMS Play Deep In My Heart from "Student Prince" (WHITE) (Harms) 3/4 Min.

5 24 (Action) GIRL RE-ENTERS ROOM TO PRINCE Continue No. 23 to screen action 1 1/4 Min.
 25 (Action) PRINCE OPENS DOOR—SEES BUTLER Repeat No. 20 (YELLOW) 1 Min.

4 26 (Action) STUDENTS STAND UP—PRINCE CALLS DOCTOR Repeat No. 2 (BROWN) 1 1/2 Min.

5 27 (Action) STUDENTS DRINK AND SIT DOWN Repeat No. 20 (YELLOW) 1 Min.

4 28 (Title) KATHI Repeat No. 2 (BROWN) 1 1/2 Min.
 29 (Action) PRINCE DRINKS WATER Repeat No. 20 (YELLOW) 1 Min.

5 30 (Action) GIRL RUNS INTO HOUSE FROM STUDENTS Repeat No. 7 (DK. GREEN) 1 Min.
 31 (Action) GIRL SEES PRINCE AS SHE COMES FROM ROOM Continue No. 30 1 1/4 Min.

3 32 (Action) PRINCE TRIES TO EMBRACE GIRL Repeat No. 23 (WHITE) with introduction 1 1/2 Min.

33 (Action) PRINCE AND GIRL INTERRUPTED BY DRUNKEN STUDENT High Hat (Johnson) 1 Min.

Mod^{to}

Copyright 1927 Robbins Music Co. Pp.

5 34 (Title) ARE YOU A STUDENT HERE 5 Repeat No. 20 (YELLOW) 1 Min.
 35 (Action) BAND PUT AROUND PRINCE'S SHOULDERS Repeat Splendor from "Royal Suite" (Luz) 1/4 Min.

Mod^{to} maestoso
Mand^{to} Triumph

5 36 (Action) STUDENTS GET UP AND SALUTE PRINCE 5 Repeat No. 20 (YELLOW) 1 1/4 Min.
 37 (Action) STUDENTS RUN AWAY FROM PRINCE 4 Repeat No. 2 (BROWN) 1 Min.
 5-4 38 (Title) BRING ME ANOTHER 5-4 Repeat No. 20 (YELLOW)—Play one strain only—then repeat No. 2 (BROWN) 1 Min.

39 (Action) TUTOR GOES TO ORCHESTRA AND TELLS THEM TO PLAY Wanderschaft (Marquardt) 1 1/2 Min.

2 40 (Action) FADE-OUT OF GIRL AT WINDOW 2 Repeat No. 7 (DK. GREEN) 2 1/4 Min.
 3 41 (Action) PRINCE KARL CLIMBS ON WALL 3 Repeat No. 23 (WHITE) with introduction 3 Min.
 NOTE: Watch wind effect and birds.

4 42 (Title) HEIDELBERG WAS NOT ONLY A PLACE 4 Play "Student Prince Waltzes" (Harms) omitting first 24 1/2 bars of introduction 2 Min.
 43 (Action) PRINCE AND GIRL RUN TO TUTOR Mariska (Rapee) 1 1/4 Min.

And^{te} con moto
Mariska

6 44 (Action) BUTLER GIVES DOCTOR IN BED LETTER 6 Repeat No. 11 (LT. GREEN) 1 1/4 Min.
 9 45 (Title) WHEN I'M KING 3-2 Repeat No. 23 (WHITE) with introduction and one chorus, then repeat No. 7 (DK. GREEN) 3 Min.
 3 46 (Action) GIRL ENTERS WHEN PRINCE IS SEATED 3 Repeat No. 23 (WHITE) 2 Min.
 2 47 (Action) FADE-OUT OF LOVERS ON COUCH TO MEDICINE ON TABLE Lace and Ruffles (Schertzing) 2 Min.

And^{te}

48 (Title) WE'LL GO FOR A RIDE Comedy Excitement (Zamechik) 3/4 Min.

F^{or}te

49 (Action) PRINCE LEAVES GIRL'S ROOM—SEES VISITOR Elegy (Friml) 1 3/4 Min.

Mod^{to}
Elegy

5 50 (Title) HAS YOUR HIGHNESS SO SOON FORGOTTEN 5 Repeat No. 20 (YELLOW) 1/2 Min.
 51 (Action) AFTER ONE SCENE SHOWING STUDENTS MARCHING Repeat No. 49 "Elegy" 1 Min.

Mod^{to}

3 52 (Action) GIRL OPENS DOOR 3 Repeat No. 23 (WHITE) 4 Min.
 NOTE: Play twice through and segue.
 SEQUE: The Old Refrain (Kreisler)

Segue
And^{te} con moto

3 53 (Action) PRINCE EMBRACES DOCTOR 3 Repeat No. 23 (WHITE) with introduction 2 1/4 Min.
 54 (Action) FADE-OUT OF GIRL CRYING ON DOCTOR'S SHOULDERS Regal Splendor (Luz) (After introd.) 1/4 Min.

Mod^{to} maestoso
The Eagle

55 (Action) ONE EXTERIOR SCENE Farewell (Kuhne) 3 3/4 Min.

And^{te}

56 (Action) PRINCE LEAVES BEDROOM Lament (Bierman) 3 1/4 Min.

And^{te} doloroso

D- fade out of girl after Letter Carrier walks off

der Mai ist gekommen

- 2 57 (Action) FADE-OUT OF GIRL AFTER LETTER CARRIER WALKS OFF Repeat No. 7 (DK. GREEN) 2 Min.
- 8 58 (Action) EXTERIOR SCENE SHOWING GUARDS AT GATE Play Heidelberg One-Step from "Student Prince" (Harms) 2 1/4 Min.
NOTE: Play "PP" after opening.
- 5 59 (Title) KELLERMAN, MY OLD KELLERMAN Repeat No. 20 (YELLOW) 2 1/2 Min.
NOTE: Play double Piano one strain, then segue.

Segue

SEGUE: Le Chevalier Printemps (Jaquet)

- 5 60 (Title) DO YOU REMEMBER Repeat No. 20 (YELLOW) 3/4 Min.
Copyr. 1927 Irving Berlin
- 3 61 (Action) KING KARL TAKES BOOK OUT OF DRAWER Repeat No. 23 (WHITE) 1 3/4 Min.
- 62 (Action) KING SEATED IN CHAIR—KELLERMAN EATS WITH KNIFE—INTERRUPT WITH TRAIN EFFECT Train Effect by Drummer 1/4 Min.
- 4 63 (Action) ONE SCENE Repeat No. 2 (BROWN) 1/4 Min.
NOTE: Play one strain lively.
- 6 64 (Action) AFTER VISION Repeat No. 11 (LT. GREEN) 1 Min.
- 65 (Action) FADE-OUT AS KING DRINKS Heidelberg Stein Song from "Prince of Pilsen" (Luders) 1 3/4 Min.

Train

66 (Action) KATHI SHOWS ON SCREEN Moto Perpetuo (Bergunker) 3/4 Min.
Copyr. 1927 G. Schirmer

- 3 67 (Action) GIRL SITS DOWN IN WOODS—TAKES LETTER OUT OF DRESS POCKET Repeat No. 23 (WHITE) 1/2 Min.
- 68 (Action) INNKEEPER OPENS DOOR WHERE PRINCE IS SEATED The Interrupted Rendez-vous (Goublier) 1 3/4 Min.

Molto marcia

69 (Title) WE SHALL SING "GAUDEAMUS IGITUR" Gaudeamus Igitur (Marquardt) 3/4 Min.
Copyr. 1911 Carl Fischer

3 4 3

- 70 (Title) KARL HEINRICH Repeat No. 23 (WHITE) once through with introduction, then repeat No. 65 "Heidelberg Stein Song"—once through—then repeat No. 23 (WHITE) 4 1/4 Min.
- 71 (Action) KATHI SITS DOWN ON LAWN AFTER KING DRIVES OFF IN CARRIAGE Repeat No. 35 "Regal Splendor" 1 1/4 Min.

Molto maestoso

Wedding March - De Koven

THE END

Proper rest period is Nos. 42 to 51 inclusive.
NOTE: All colors are in the "Student Prince" Selection, published by T. B. Harms. PURPLE, the first *Allo. Moderato*—the arrival of the Prince. DARK GREEN "Serenade," WHITE "Deep In My Heart", BROWN "Drinking Song," YELLOW "Student's March," LIGHT GREEN "Just We Two." The 10 bars preceding "Deep In My Heart" (WHITE) should be used for Nos. 32, 41, 45, 53, 70 as suggested in cue sheet.
The repetition of numbers in this cue sheet is simplified by the use of the "LUZ" SYMPHONIC COLOR GUIDE, sold by Music Buyers Corporation, 1520 Broadway, New York City. The color suggested for repetition of numbers designates the Mood or Emotion, and is used as a code for such repetitions.
Country of Origin, U. S. A.

Complete orchestrations and single piano parts of each separate number contained hereon, can be purchased from CAMEO MUSIC SERVICE CORPORATION, 315-317 WEST 47TH STREET, NEW YORK CITY.