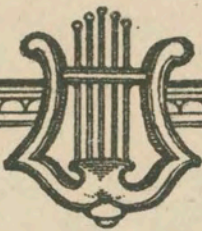
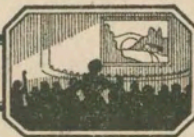


423

17



*Thematic Music*



*Cue Sheet*

M. J. MINTZ (PATENT)  
JULY 31, 1923.

M. C. LEVEE

PRESENTS

“SWEET DADDIES”

A First National Picture

MUSIC COMPILED BY

EUGENE CONTE

Complete orchestrations and single piano parts of each separate number contained hereon, can be purchased from CAMEO MUSIC SERVICE CORPORATION, 315-317 West 47th Street, New York City.

MADE IN U. S. A.



M. J. MINTZ (PATENT)  
JULY 31, 1923.

# "SWEET DADDIES"

Music compiled by Eugene Conte

- 1 AT SCREENING ..... Jollity (Zamecnik) ..... ¾ Min.

*All<sup>o</sup>*

Copyright 1925 Sam Fox

- 2 (Title) AN APARTMENT ..... Erin Go Braugh (DeWitt) ..... 1½ Min.

*March*

Copyright 1904 Carl Fischer

- 3 (Action) PAT ENTERS WITH HOD ..... Screening Preludes No. 2 (Rapee-Axt) ..... 1¼ Min.

*All<sup>o</sup>*

Copyright 1924 Robbins & Engel

- 4 (Title) HERRING — ONIONS ..... Scherzando Hurry (Frey) ..... 2½ Min.

*Scherzando*

Copyright 1925 Robbins & Engel

- 5 (Title) PAPA FINKLEBAUM ..... Funny Fellow (Frank) ..... ¾ Min.

*Mod<sup>to</sup>*

Copyright 1905 Walter Jacobs

- 6 (Action) CLOSE-UP OF STAGE ..... Repeat No. 4 "Scherzando Hurry" ..... 2¼ Min.

*Scherzando*

- 7 (Action) MAN HIT BY PIE ..... Gossip (Kay) ..... 1 Min.

*All<sup>o</sup> strepitoso*

Copyright 1925 Forster M. P.

- 8 (Action) PAT IN DRESSING ROOM ..... Serenade (Harris) ..... 2¼ Min.

*Mod<sup>to</sup> con moto*

Copyright 1922 S. P. Harris

- 9 (Action) CLOSE UP OF MARCHING FEET ..... Oh Mister (Frey) ..... 1¾ Min.

*All<sup>o</sup> mod<sup>to</sup>*

Copyright 1924 Robbins & Engel

- 10 (Title) OPEN THE GATES ..... No One (Ager) ..... 1½ Min.

*Mod<sup>to</sup>*

Copyright 1925 Ager, Vellens, Barta & Stein

11. (Action) TOMMY AND PAT ENTER CELL ..... Honey, I'm In Love With You (Conrad) ..... 2 Min.

Musical notation for item 11, starting with *Mod<sup>to</sup>*. Copyright 1925 Leo Feist.

12. (Action) PEOPLE APPLAUD ..... Remember (Berlin) ..... 1 Min.

Musical notation for item 12, starting with *Mod<sup>to</sup>*. Copyright 1925 T. Berlin.

13. (Title) THE FINKLEBAUM N. Y. HOME ..... THEME: Magic Love (Bradford) ..... 2½ Min.

Musical notation for item 13, starting with *Valse lenté*. Copyright 1925 Sam Fox.

14. (Action) FATHER ENTERS ..... Alluring Coquetry (Baron) ..... 3 Min.

Musical notation for item 14, starting with *All<sup>o</sup> scherzando*. Copyright 1925 Belwin.

15. (Action) MRS. FINKLEBAUM SPEAKS TO TOMMY, ... Mystic Romance (Srawley) ..... 2 Min.

Musical notation for item 15, starting with *Slow dramatic*. Copyright 1926 Geo. H. Sanders.

16. (Action) PAT ENTERS ..... Characteristic Allegro (Moszkowsky) ..... 2½ Min.

Musical notation for item 16, starting with *All<sup>o</sup>*. Copyright 1925 Robbins Engel.

17. (Title) IT IS HARD TO KEEP ..... Junella (Kahn) ..... 3 Min.

Musical notation for item 17, starting with *Mod<sup>to</sup>*. Copyright 1924 Feature M. Co.

18. (Title) A FEW WEEKS LATER ..... Spring Fancies (Marquardt) ..... 1½ Min.

Musical notation for item 18, starting with *Mod<sup>to</sup>*. Copyright 1925 Music Buyers Co.

19. (Title) FINKLEBAUM'S FLORIDA HOME ..... Mirth and Merriment (Delille) ..... 2 Min.

Musical notation for item 19, starting with *All<sup>o</sup> vivo*. Copyright 1924 Belwin Inc.

20. (Title) MISTER O'BRIEN DO SOMETHING ..... Funeral March (Lanciani) ..... 1½ Min.

Musical notation for item 20, starting with *All<sup>o</sup> mod<sup>to</sup>*. Copyright 1912 G. Schirmer.

21. (Action) ABIE AND GIRLS ..... Ukulele Lady (Whiting) ..... 1 Min.

Musical notation for item 21, starting with *Jazz*. Copyright 1925 Training Berlin.

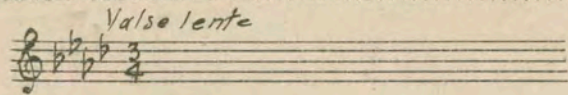
22. (Action) TOMMY AND MIRIAM ..... Repeat Theme No. 13 ..... ¾ Min.

Musical notation for item 22, starting with *Valse lente*. Copyright 1925 Robbins Engel.

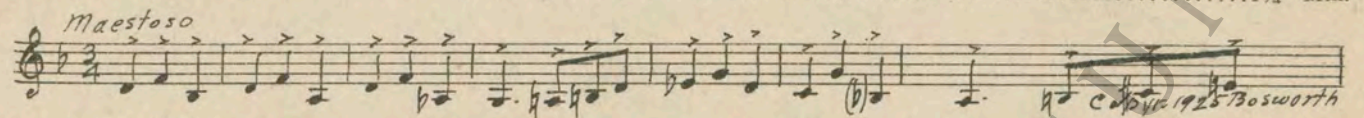
23. (Action) MRS. FINKLEBAUM AND PAT ..... Cynical Scherzando (Axi) ..... 1 Min.

Musical notation for item 23, starting with *All<sup>o</sup> scherz.*. Copyright 1925 Robbins Engel.

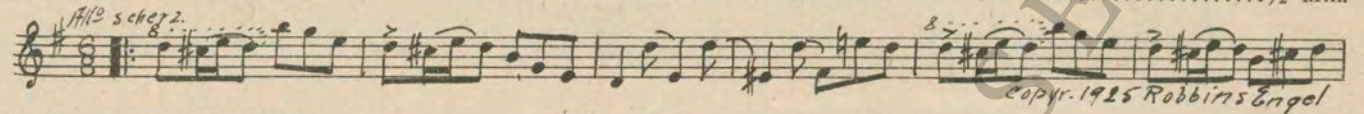
24 (Title) EACH MORNING ..... Repeat Theme No. 13 ..... ¾ Min.



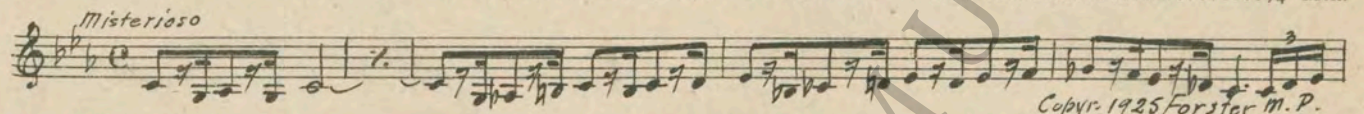
25 (Action) MOTHER SEES LOVERS ..... Fate (Ketelbey) ..... 1¼ Min.



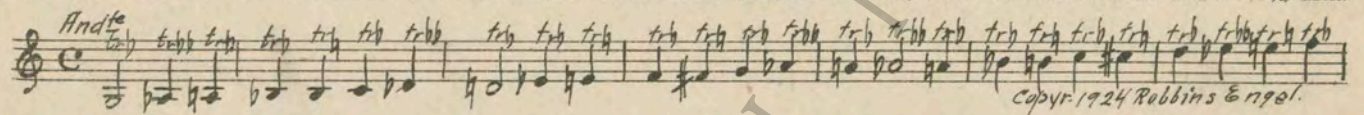
26 (Title) MY POOR ABIE LEFT ME ..... In Merry Mood (Axt) ..... 1½ Min.



27 (Action) FADE-IN CREW OF SHIP ..... Cabal (Kay) ..... ¾ Min.



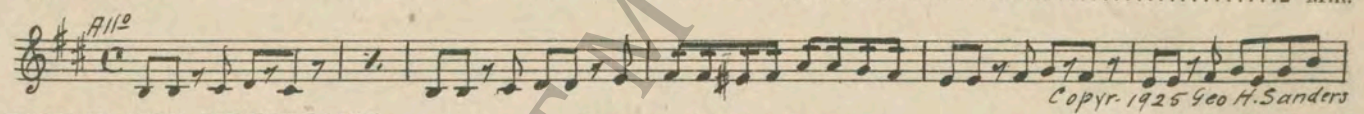
28 (Action) PAT AND ABIE ..... In the Clouds (Rapee-Axt) ..... 1¾ Min.



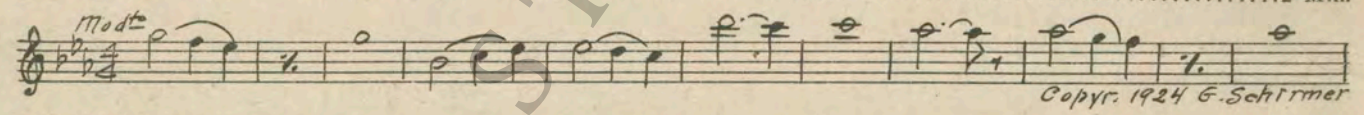
29 (Action) SHOOTING STARTS ..... Furioso (Savino) ..... 4 Min.



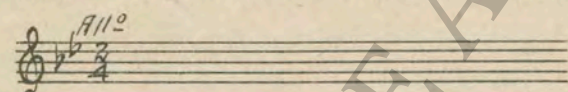
30 (Title) THAT NIGHT ..... Omens (Schad) ..... 2 Min.



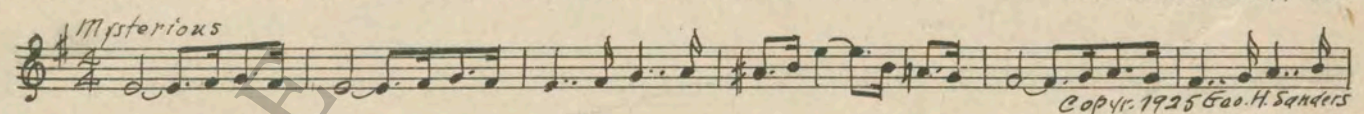
31 (Action) FADE-IN MRS. FINKLEBAUM ..... Souvenir d'Amour (Conte) ..... 2 Min.



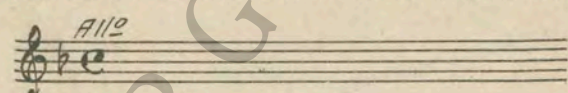
32 (Action) PRISON SCENE ..... Repeat No. 1 "Jollity" ..... 1¼ Min.



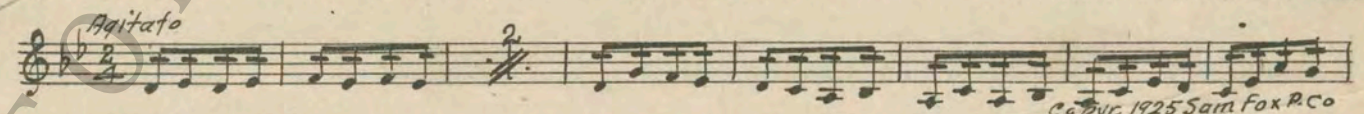
33 (Action) MRS. FINKLEBAUM IN CELL ..... Phantoms (Schad) ..... 2¾ Min.



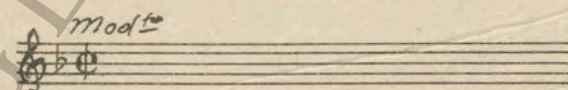
34 (Action) JUDGE ON STAND ..... Repeat No. 16 "Characteristic Allegro" ..... 2¾ Min.



35 (Action) PAT AND TOMMY SEE MIRIAM ..... Evil Plotter (Zamecnik) ..... 2 Min.



36 (Action) ABIE STARTS LAUGHING ..... Repeat No. 10 "No One" ..... 1 Min.



THE END

Country of Origin, U. S. A.

Complete orchestrations and single piano parts of each separate number contained hereon, can be purchased from CAMEO MUSIC SERVICE CORPORATION, 315-317 West 47th Street, New York City.

95:2489:1