

M. J. MINTZ (PATENT)  
JULY 31, 1923.

Esther Stephens

ADOLPH ZUKOR and JESSE L. LASKY  
present  
**CHESTER CONKLIN and GEORGE BANCROFT**  
in  
**"TELL IT TO SWEENEY"**



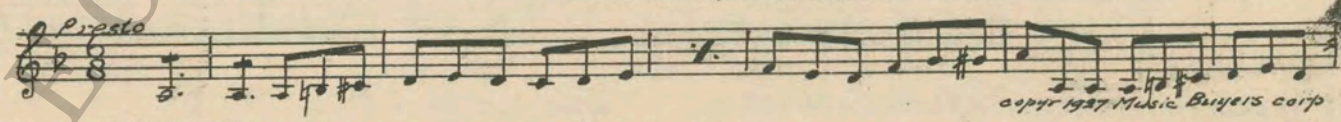
with  
**Jack Luden and Doris Hill**  
A Gregory La Cava Production  
Story by Percy Heath and Monte Brice  
Screen play by Percy Heath and Kerry Clarke  
B. P. Schulberg, Associate Producer  
Compiled by James C. Bradford  
Footage 6006 feet

*A Paramount Picture*

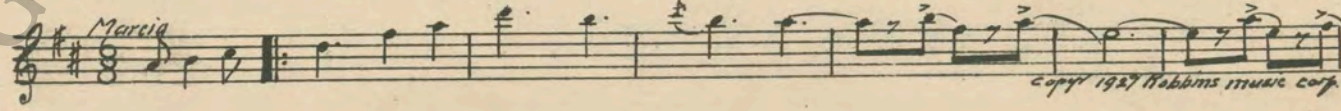
3 (Action) EXPRESS TRAIN APPROACHING ..... Zip (Frey) ..... ¾ Min.



4 (Action) EXPRESS STOPS ..... NOTE: Locomotive effects, whistle, steam, bell, etc. Symphonic Incidentals No. 5 (Marquardt) ..... 2¼ Min.



5 (Title) GRAND JUNCTION ..... Manhattan Isle (Bowers) ..... ¾ Min.



6 (Title) THE ROMANCE ..... LOVE THEME: Blue Skies (Berlin) ..... 1 Min.

*Mod<sup>to</sup>*

Handwritten musical score for 'THE ROMANCE' in G major, 2/4 time. The score consists of five staves of music. The first staff begins with a treble clef, a key signature of one sharp (F#), and a tempo marking 'Mod<sup>to</sup>'. The music is a single melodic line. The fifth staff ends with the copyright notice 'copyr 1927 Irving Berlin Inc.'

12 (Title) I'M FIREMAN ON ORIOLE ..... I'm Sitting On Top of the World (Henderson) ..... 1½ Min.

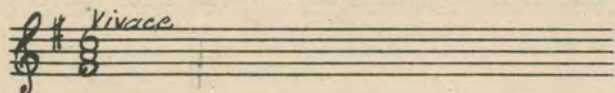
Handwritten musical score for 'I'M FIREMAN ON ORIOLE' in G major, 2/4 time. The score consists of a single staff of music. The key signature has one sharp (F#) and the time signature is 2/4. The copyright notice 'copyr 1916 Carl Fischer.' is written at the end of the staff.

13 (Action) LUKE PICKS UP FLOWER BOXES ..... Repeat Luke Theme No. 2 ..... 1½ Min.

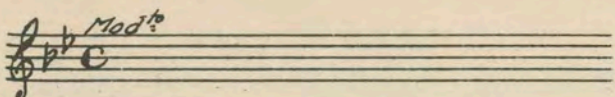
*Marcia*

Handwritten musical score for 'LUKE PICKS UP FLOWER BOXES' in G major, 2/4 time. The score consists of a single staff of music. The key signature has one sharp (F#) and the time signature is 2/4. The tempo marking 'Marcia' is written above the staff.

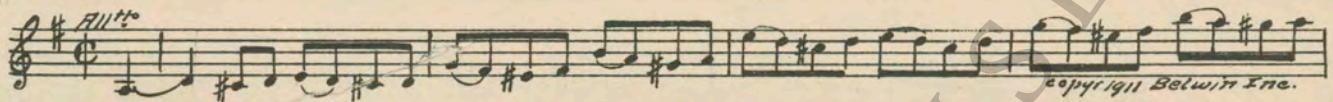
14 (Title) BELIEVE IT OR NOT ..... Repeat No. 9 "Gigue" ..... 3½ Min.



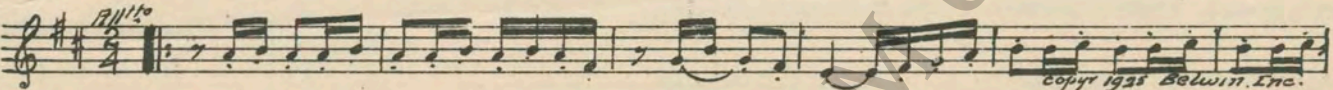
15 (Title) SO CASEY CAME TO SUPPER ..... Repeat Casey Theme No. 1 ..... 1¼ Min.



16 (Action) BELL RINGS ..... Fragrance of Spring (Sanders) ..... 1¼ Min.

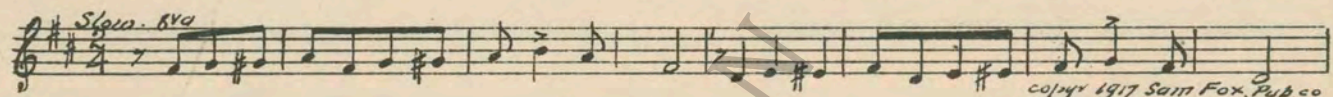


17 (Title) I'D BETTER LAY ..... Rural Flirts (Bradford) ..... 1½ Min.

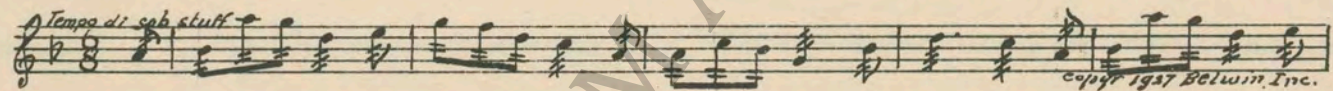


18 (Action) PARROT SPEAKS ..... Siss-Boom-Ah (Smith) ..... 1¼ Min.

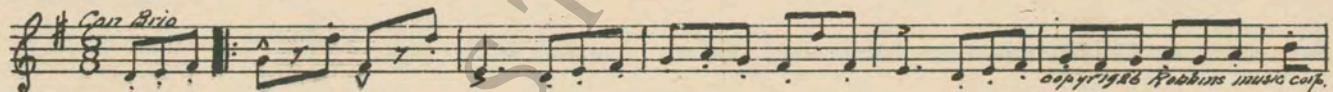
NOTE: Fake Flute bits ad lib against orchestra.



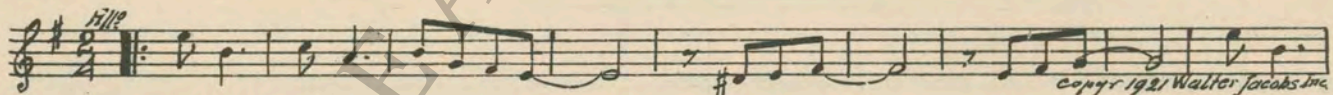
19 (Title) GET THERE EARLY ..... Burlesque on Lange's Flower Song (Kempinski) ..... ½ Min.



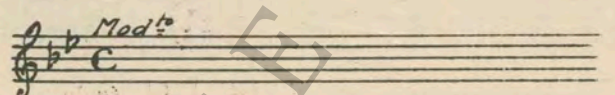
20 (Title) DON'T WORRY, MR. BEAMISH ..... The Mischief Makers (Carbonara) ..... 1 Min.



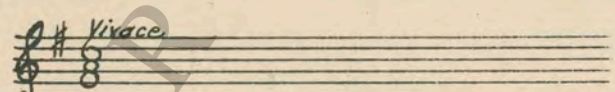
21 (Title) THE ANNUAL L & M. PICNIC ..... Wild Oats (Cobb) ..... 2¾ Min.



22 (Action) CASEY AND CROWD ..... Repeat Casey Theme No. 1 ..... 2 Min.



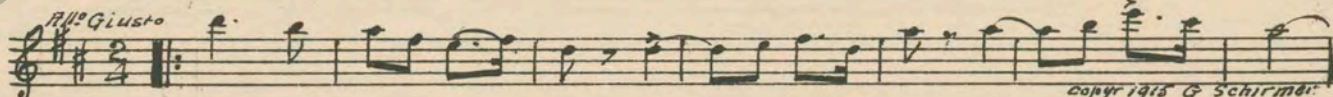
23 (Action) LUKE KICKS CASEY IN SHINS ..... Repeat No. 9 "Gigue" ..... 3½ Min.



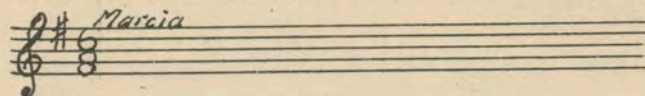
24 (Title) ANOTHER DAY ..... Avril Frileux (Mouton) ..... ½ Min.



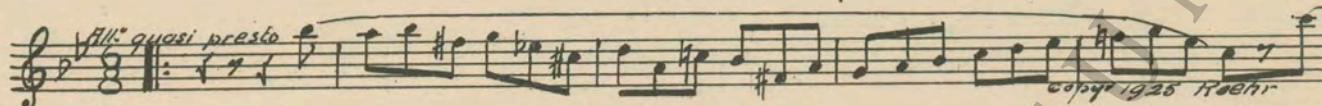
25 (Action) INSERT-TELEGRAM ..... Keep Going (Kleinecke) ..... ¾ Min.



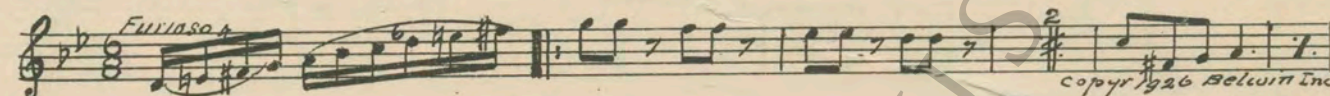
26 (Action) MR. SWEENEY READS TELEGRAM ..... Repeat Luke Theme No. 2 ..... 3 Min.



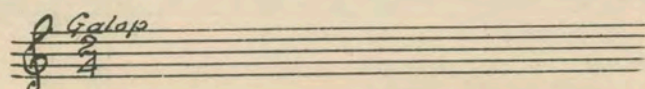
27 (Action) THEY START FIGHT IN ENGINE CAB..... Agitato Dramatico (Fresco) ..... 2 Min.



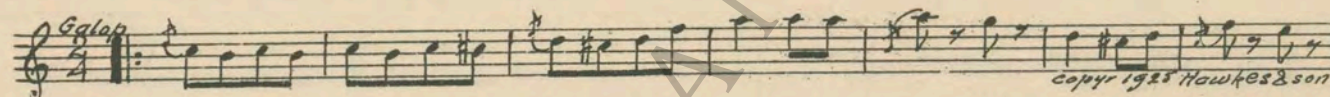
28 (Title) IT'S ISABEL ..... Galloping Furies (Rapee) ..... 2½ Min.



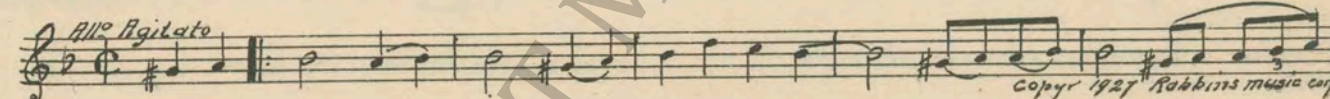
29 (Action) CASEY THROWS COT TOWARD ENGINE.... Repeat No. 3 "Zip" ..... 2 Min.



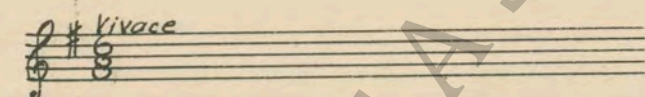
30 (Action) CRASH THROUGH HAY WAGON ..... Mounted Police Galop (LeThiere) ..... 2¼ Min.



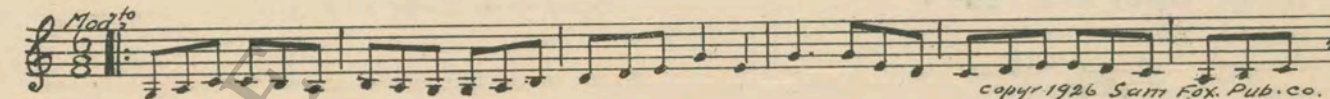
31 (Title) NOT ONE INCH NEARER OXFORD ..... Impression Dramatique (Bradford) ..... 2½ Min.



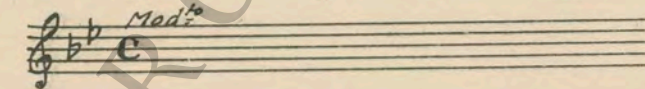
32 (Action) BOYS JUMP ON MR. SWEENEY ..... Repeat No. 9 "Gigue" ..... 3¼ Min.



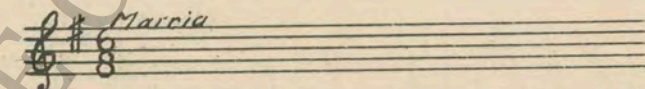
33 (Title) I'M FROM THE POSTAL DEPARTMENT..... Funny Faces (Ring-Hager) ..... ½ Min.



34 (Title) WHICH ONE OF YOU HIT ME? ..... Repeat Casey Theme No. 1 ..... 1 Min.



35 (Title) NOW THAT YOUR ..... Repeat Luke Theme No. 2 ..... ½ Min.



Country of Origin, U. S. A.

THE END

Complete orchestrations and single piano parts of each separate number contained hereon, can be purchased from CAMEO MUSIC SERVICE CORPORATION, 315-317 WEST 47th STREET, NEW YORK CITY.