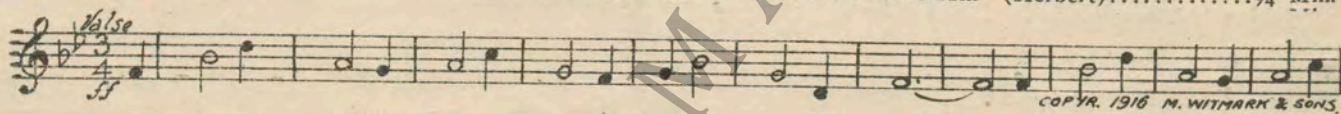


Pathe
 presents
“TENTH AVENUE”
 with
PHYLLIS HAVER
VICTOR VARCONI and JOSEPH SCHILDKRAUT
 A William C. deMille Production
 From the stage play by John McGowan
 and Lloyd Griscom
 Continuity by Douglas Doty
 DeMille Studio Production
 Compiled by Rudolph Berliner
Pathe Exchange, Inc.
 Distributors

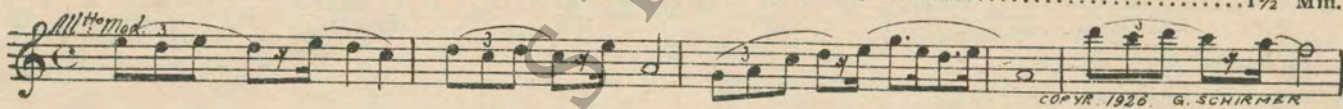
1 AT SCREENING One Summer's Day (Ringleben) 1½ Min.



2 (Title) ONLY FIVE BLOCKS WEST Streets of New York from "Red Mill" (Herbert) ¾ Min.

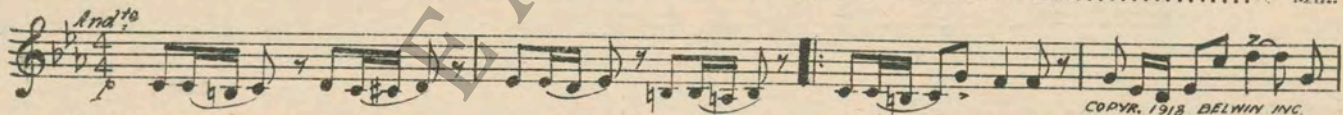


3 (Action) INSERT—SIGN—"FURNISHED ROOM" Stray Sunbeams (Huerter) 1½ Min.

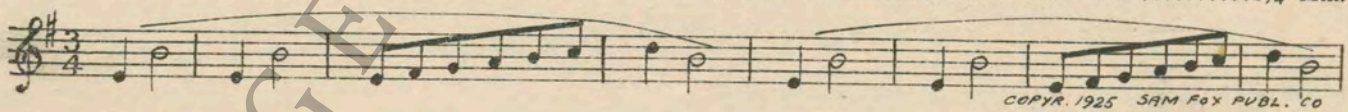


4 (Action) JOE APPEARS IN HALL Sinister Theme (Vely) ? Min.

2



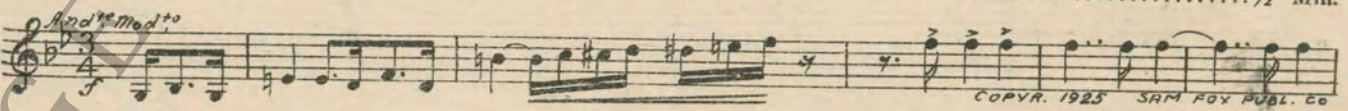
5 (Title) NIGHT A Mysterious Event (Zamecnik) 1¾ Min.



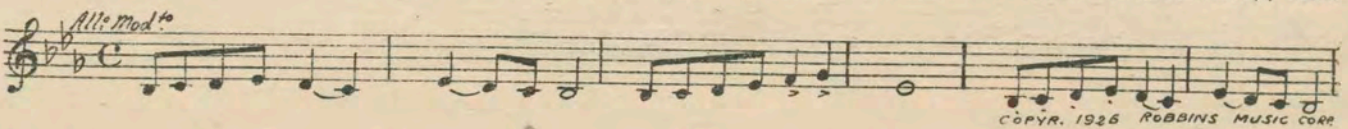
6 (Title) ME RISKIN' A STRETCH Vengeance (Baron) ½ Min.



7 (Action) AFTER SHOT Accusation (Zamecnik) ½ Min.



8 (Title) YOU SAVED MY LIFE Whims (Savino) 1¼ Min.



D - back to Bob after Lyla lowers Window Shade

9 (Action) BACK TO BOB AFTER LYLA LOWERS WINDOW SHADE Prudence (Luz) 1½ Min.

Musical notation for item 9, featuring a treble clef, a key signature of one sharp (F#), and a tempo marking of *Mod^{to}*. The melody consists of eighth and quarter notes. A copyright notice at the bottom right reads "COPYR. 1916 PHOTOPLAY MUSIC CO".

10 (Title) JUST PLAYING SOLITAIRE THEME: Dream of Love and You (Taylor) 1¼ Min.

Musical notation for item 10, featuring a treble clef, a key signature of three flats (Bb, Eb, Ab), and a tempo marking of *mod^{to}* with a dynamic marking of *mf*. The melody is primarily composed of quarter notes. A large red letter 'T' is written to the left of the first staff. A copyright notice at the bottom right reads "COPYR. 1926 SAM FOX PUBL. CO".

11 (Action) JOE SEEN IN HALL (FLASH) Repeat No. 4 "Sinister Theme" 1½ Min.

Musical notation for item 11, featuring a treble clef, a key signature of three flats (Bb, Eb, Ab), and a 4/4 time signature. A circled blue number '2' is written to the left of the staff. The notation shows a few notes at the beginning of the piece.

12 (Title) YEP—DRIVIN' A TAXI In the Clover (Thurban) 3 Min.

Musical notation for item 12, featuring a treble clef, a key signature of two sharps (F#, C#), and a 2/4 time signature. The tempo marking is *All^{to}* and the dynamic is *p*. The melody is a rhythmic eighth-note pattern. A copyright notice at the bottom right reads "COPYR. 1909 LAFLEUR".

13 (Title) I WANNA GO TO BED I'm Tired (Jerome) ½ Min.

Musical notation for item 13, featuring a treble clef, a key signature of one flat (Bb), and a common time signature. The tempo marking is *Languid*. The melody consists of quarter and eighth notes.

14 (Action) BACK TO BOB AT TABLE A la bien aimee (Schutt) 1¾ Min.

Musical notation for item 14, featuring a treble clef, a key signature of two sharps (F#, C#), and a 3/4 time signature. The tempo marking is *Waltz*. The melody is a waltz-style melody with eighth notes. A copyright notice at the bottom right reads "COPYR. 1915 G.M. ROSENBERG".

15 (Action) BACK TO MA TRYING TO TAKE OFF NECKLACE Mignonette (Friml) 1 Min.

Musical notation for item 15, featuring a treble clef, a key signature of two sharps (F#, C#), and a 2/4 time signature. The tempo marking is *All^{to}* and the dynamic is *p*. The melody is a rhythmic eighth-note pattern. A copyright notice at the bottom right reads "COPYR. 1911 G. SCHIRMER".

16 (Action) JOE LEAVES ROOM Devotion (Deppen) 1¾ Min.

Musical notation for item 16, featuring a treble clef, a key signature of one flat (Bb), and a common time signature. The tempo marking is *mod^{to} con moto* and the dynamic is *p*. The melody consists of quarter and eighth notes. A copyright notice at the bottom right reads "COPYR. 1915 SAM FOX PUBL. CO".

17 (Action) JOE THROWS CIGARETTE AWAY AFTER BOB LEAVES Repeat No. 4 "Sinister Theme" 2½ Min.

Musical notation for item 17, featuring a treble clef, a key signature of three flats (Bb, Eb, Ab), and a 4/4 time signature. A circled blue number '2' is written to the left of the staff. The notation shows a few notes at the beginning of the piece.

18 (Action) **LYLA CLOSSES DOOR** Defiant Love (Schad) 2¼ Min.

Musical notation for track 18. Treble clef, 2/4 time, key signature of one sharp (F#). Tempo marking: *All.^o Abbass.^o*. Dynamics: *mf*. Copyright: 1925 G. SCHIRMER.

19 (Title) **HE HAD AN AWFUL ROW** Unfinished Symphony (Schubert) 2 Min.

Musical notation for track 19. Treble clef, 2/4 time, key signature of one sharp (F#). Tempo marking: *All.^o Mod.^{to}*. Copyright: 1896 CARL FISCHER.

20 (Action) **TWO MEN APPEAR IN DOORWAY**..... Incognito (Kilenyi) ¾ Min.

Musical notation for track 20. Treble clef, 3/4 time, key signature of two flats (Bb, Eb). Tempo marking: *Mod.^{to} Misterioso*. Dynamics: *p*. Copyright: 1926 CARL FISCHER.

21 (Action) **EMPTY ROOM—SHADOW APPEARS AT WINDOW** Shadows In the Night (Borch) 1½ Min.

Musical notation for track 21. Treble clef, 3/4 time, key signature of two flats (Bb, Eb). Tempo marking: *All.^o*. Dynamics: *pp*. Copyright: 1919 CARL FISCHER.

22 (Action) **AFTER FINK IS SHOT** Sinister Agitato (Drigo's Cinema Classics) ¾ Min.

Musical notation for track 22. Bass clef, 2/4 time, key signature of two flats (Bb, Eb). Tempo marking: *Mosso*. Copyright: 1928 CARL FISCHER.

23 (Title) **SO THIS IS LITTLE BENNY** The Third Degree (Kempinski) 2¼ Min.

Musical notation for track 23. Treble clef, 2/4 time, key signature of one sharp (F#). Copyright: 1927 IRVING BERLIN INC.

24 (Action) **EXTERIOR—STREET SCENE** Uneasiness (Mendelssohn) 1¼ Min.

Musical notation for track 24. Treble clef, 2/4 time, key signature of one sharp (F#). Tempo marking: *Agitato*. Copyright: 1926 SONNEMANN MUSIC CO.

25 (Action) **POLICE OFFICER SEATED OUTSIDE DOOR..** Paddy Whack (Ascher) ¾ Min.

Musical notation for track 25. Treble clef, 2/4 time, key signature of one sharp (F#). Tempo marking: *Tig*. Copyright: 1915 EMIL ASCHER.

26 (Action) **BACK TO DETECTIVE IN FINK'S ROOM**..... Suspicions (Baron)..... 1 Min.

Musical notation for track 26. Treble clef, 2/4 time, key signature of one sharp (F#). Tempo marking: *All.^o Mod.^{to}*. Copyright: 1927 IRVING BERLIN INC.

27 (Action) **BOB JOINS LYLA** Repeat Theme No. 10 2 Min.

Musical notation for track 27. Treble clef, 2/4 time, key signature of two flats (Bb, Eb). Tempo marking: *Mod.^{to}*. A large red 'T' is written to the left of the staff.

28 (Action) **(SECOND FLASH) EXTERIOR—JOE WALKS UP STEPS** Repeat No. 4 "Sinister Theme" 1¼ Min.

Musical notation for track 28. Treble clef, 2/4 time, key signature of two flats (Bb, Eb). Tempo marking: *Mod.^{to}*. A large blue circled '2' is written to the left of the staff.

29 (Title) **IS THIS TRUE?** Why? (Schumann) ¾ Min.

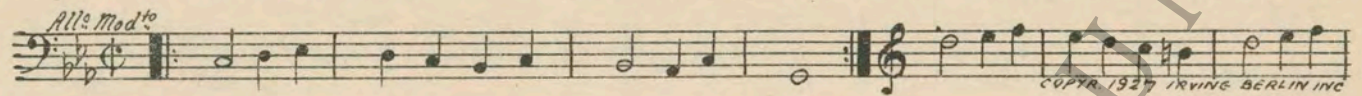
Musical notation for track 29. Treble clef, 2/4 time, key signature of one sharp (F#). Tempo marking: *Lento*. Copyright: 1913 CARL FISCHER.

"Fink's been robbed"

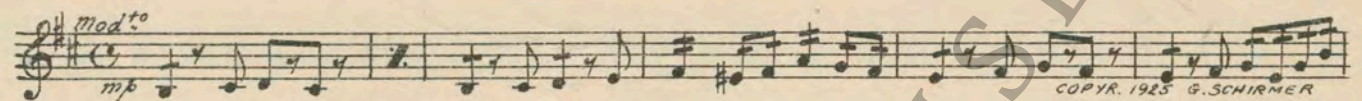
30 (Title) FINK'S BEEN ROBBED Sarcasm (Kempinski) 3½ Min.



31 (Action) INSERT—SILVER DOLLAR Impending Danger (Kempinski) 4¼ Min.



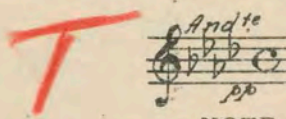
32 (Action) DETECTIVE WALKS UP TO BOB Omens (Schad) 2¼ Min.



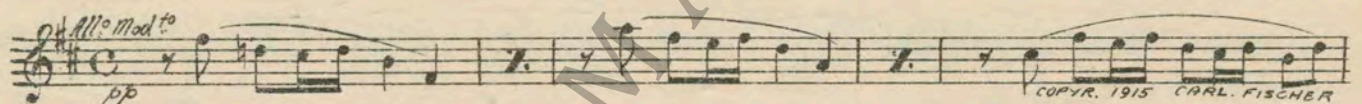
33 (Action) DETECTIVE PUTS HANDCUFFS ON BOB... Melodie (Tschaikowsky) 1¾ Min.



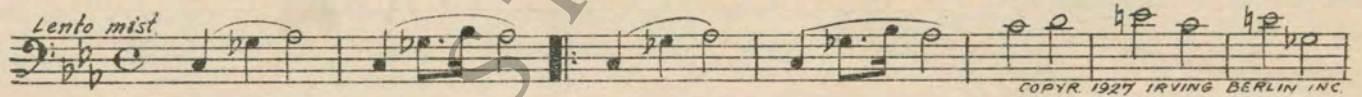
34 (Action) LYLA COMES TO BOB Repeat Theme No. 10 2¼ Min.



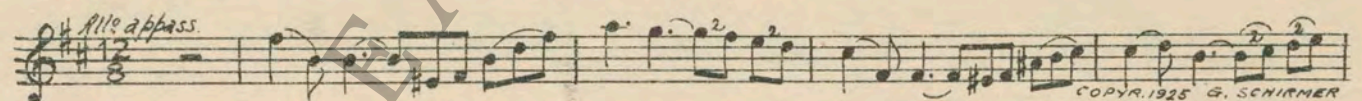
35 (Action) LYLA LEAVES ROOM Fingal's Cave (Mendelssohn) 5¼ Min.



36 (Action) JOE LOOKS UP AT CEILING Haunted Nights (Jacquet) 2¾ Min.



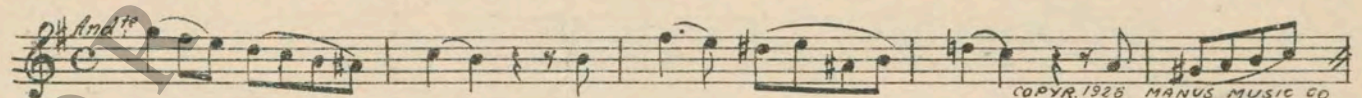
37 (Action) JOE JUMPS UP FROM BED Desperation (Schad) 1¾ Min.



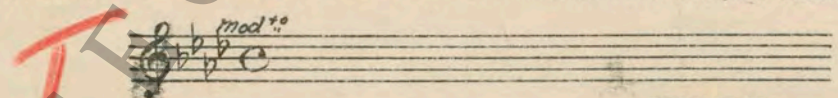
38 (Action) DETECTIVE FIRES AT JOE Fugitive (Maiorana) ½ Min.



39 (Action) JOE LYING ON COUCH Lamento from Eugene Onegin (Tschaikowsky) 1½ Min.



40 (Action) LYLA WALKS UP TO BOB Repeat Theme No. 10 2¼ Min.



THE END

Printed in U. S. A.

Complete orchestrations and single piano parts of each separate number contained hereon, can be purchased from CAMEO MUSIC SERVICE CORPORATION, 315-317 WEST 9TH STREET, NEW YORK CITY.

95:2500:1