

"There's My Daddy Now -" Whoop Pop - Whoa Pop"

?

GREATER THEMATIC MUSIC CUE SHEET
for
"THAT'S MY DADDY"

with
REGINALD DENNY

UNIVERSAL

by
James C. Bradford

THE purpose of this GREATER THEMATIC MUSIC CUE SHEET is to make it possible for a more detailed and accurate rendition of the suggested music, to establish a more definite locale of the production, a more perfect sequence of modulations from one selection to another, a more careful working out of the dynamics and effects, and in fact to take the place of a complete music score.

By carefully adhering to the suggestions offered in this cue sheet together with the type, style and character of the music selected for the various scenes, action and characters, a most effective and satisfactory performance must result from any theatre combination of musicians, as extra care was taken to select only such arrangements that can be properly rendered with any size orchestra, or even with Organ or Piano alone.

This is a child's picture throughout, so therefore play juvenile selections as often as possible.

The important themes are described as follows:

MRS. HAWKES THEME: (Cues 4, 8, 37, 46) A restless movement showing the nervous cruel actions of this heartless woman, and her hatred for little Pudge. "UNFINISHED SYMPHONY" (Schubert).

O'BRIEN THEME: (Cues 10, 47) An Irish atmospheric Intermezzo to show the nationality and wit of the Irish Policeman. "A BIT O' BLARNEY" (Helf).

PUDGE THEME: (Cues 14, 17, 30, 25 and 31 at your discretion, 49) A light 6/8 juvenile allegretto of the Miniature type to show the happy disposition of this little orphan. "TINY TOT" (Lotter).

DADDY THEME: (Cues 16, 21, 45) A sweet child Ballad with appropriate text to show the love of this little child for her adopted daddy. "DADDY" (Behrend).

MOLLY THEME: (Cues 23, 48) A sweet Irish Ballad with appropriate text to follow the actions of Molly, and the growing affection of Jim for her. "WHEN IRISH EYES ARE SMILING" (Ball).

(CONTINUED ON PAGE 7)

Thematic Music  **Cue Sheet**

M. J. MINTZ (PATENT)
JULY 31, 1923.

1 AT SCREENINGPrelude (Symphonic Love Theme) (Savino)¾ Min.

Theme

Largamente con passione.

copy 1927 Robbins music corp.

2 (Title) TELLING LIES IS A BAD HABIT Fairy Tales (Komzak)1 Min.

Fairy Tales

All.^o

copy 1910 Carl Fischer.

3 (Title) PUDGE HAD SEEN HER DADDY Slumber Boat (Gaynor)1½ Min.

Dream Daddy

All.^o

copy 1898 Clayton Summy Co.

4 (Title) POVERTY AND MRS. HAWKESMRS. HAWKES THEME: Unfinished Symphony (Schubert) ¾ Min.

Dream Symphonies Zamecnik

All.^o Mod.^o

copy 1896 Carl Fischer.

5 (Title) A FEW BLOCKS AWAY Please Go 'Way and Let Me Sleep (Von Tilzer)1¼ Min.

GERALD

Mod.^o

copy 1927 Harry Von Tilzer.

NOTE: Play very languid and slowly.

6 (Action) JIM ANSWERS TELEPHONE Miss Annabelle Lee (Pollack)½ Min.

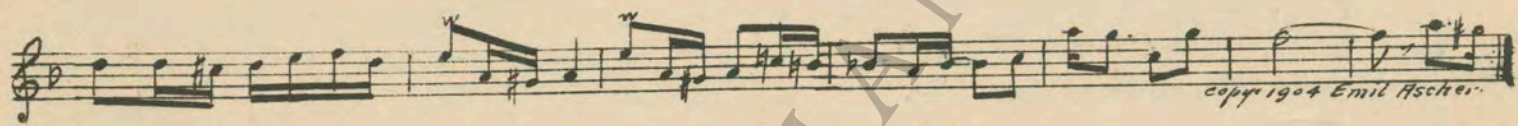
Popo

Mod.^o

copy 1927 Irving Berlin, Inc.

Dream Daddy

GEORGE ENGEL MUSEUM



11 (Title) I'LL TAKE YE THERE MESELF The Joy Riders (Patou) 1 Min.



12 (Title) HAS THE BABY REGAINED CONSCIOUSNESS Animal Cartoonix No. 2 (Aborn) 1 Min.



13 (Title) OH! MR. POLICEMAN Mother Croons a Tune (Copping) 1 1/2 Min.



14 NOTE: Play "PP" con sordini strings only.

Baby Dreams

copy 1904 Emil Fischer

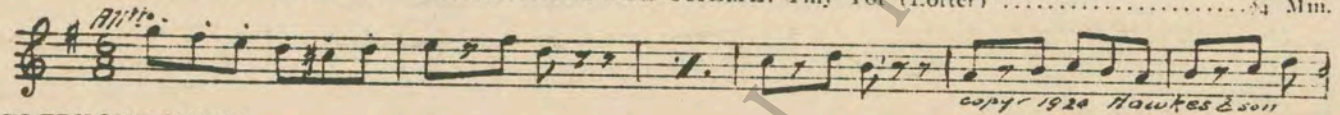
copy 1927 Hawkes & Son

copy 1925 Edwin Mac

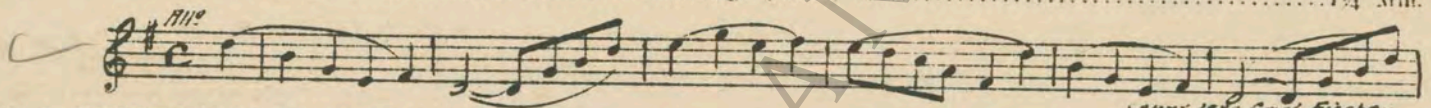
copy 1927 Geo. H. Sanders Inc.

MUSEUM

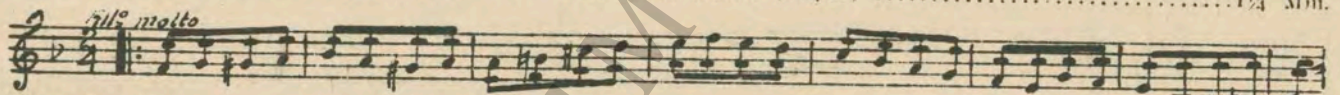
17 (Title) **HOW DO YOU DO UNCLES**PUDGE THEME: Tiny Tot (Lottor) 3/4 Min.



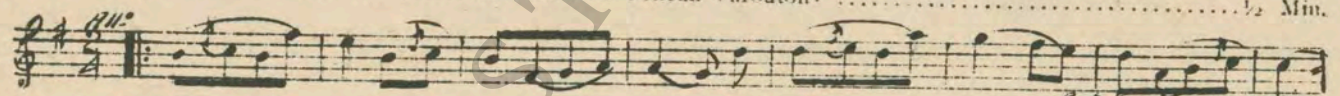
18 (Action) **TELEPHONE RINGS**Babilage (Gillet) 1 1/4 Min.



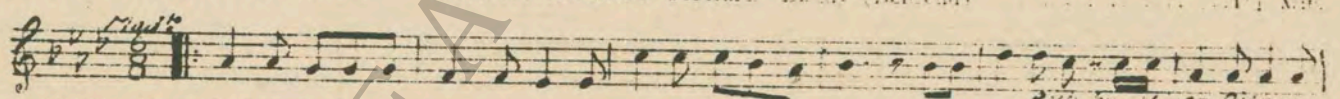
19 (Action) **PUDGE FALLS DOWN STAIRS**Perpetuum Mobile (Rapee) 1 1/4 Min.



20 (Action) **HE HANGS UP**Avril Frileux (Mouton) 1/2 Min.



21 (Title) **WHO IS YOUR DADDY?**DADDY THEME: Daddy (Schrendl) 1 1/4 Min.



22 (Title) **AND SO THE DAY BEFORE HIS WEDDING.. Emmett's Lullaby** 1 1/4 Min.



GEORGE

24 (Action) THEY ALL ENTER CHILD'S ROOM Sleepy Baby (Vannah) 3/4 Min.

Joyland

And^{te} Mod^{to}
 copyr 1910 M. Wilmark & son.

25 (Title) IS YOU MY MAMMY? Poupee Valsante (Poldini) 1 Min.

C

Tempo di valse
 copyr 1908 Carl Fischer.

26 (Action) CAR APPEARS AT DOOR Characteristic Allegro (Moskowski) 3 1/2 Min.

All^o
 copyr 1926 Robbins music corp.

27 (Action) MOLLY LOOKING AT CHILD'S RAGGED CLOTHES Curly Locks from "Baby's Opera" (Byng) 1 1/4 Min.

Joyland Herbert

Mod^{to}
 copyr 1901 Hawkes & son.

28 (Title) YOU KNOW PUDGE THINKS YOU'RE WONDERFUL The Jesters (Carbonara) 1 1/4 Min.

Con brio 8^{va}
 copyr 1927 Robbins music corp.

29 (Title) A MAN'S WEDDING DAY The Scandal Mongers (Patou) 1 1/4 Min.

All^o
 copyr 1927 Hawkes & son.

30 (Action) MOLLY AND PUDGE ENTER PUDGE THEME: Tinv Tot (Lotter) 1 1/4 Min.

All^o
 copyr 1924 Hawkes & son.

31 (Title) DADDY, PLAY WITH PUDGE Humpty Dumpty from "Baby's Opera" (Byng) 1 1/2 Min.

All^o con spirito 8^{va}
 copyr 1910 Hawkes & son.

32 (Action) SYLVIA AND MOTHER ENTER Uneasiness (Mendelssohn) 1 3/4 Min.

And^{te} con moto
 copyr 1926 Cinema Service.

33 (Action) JIM RUSHES TOWARD WINDOW Thrills (Sanders) 1 1/4 Min.

C

Lively
 copyr 1924 Geo. H. Sanders co.

34 (Action) MOLLY AND PUDGE OUTSIDE Aubade Printaniere (Lacmbe) 1 Min.

All^o
 copyr 1907 Carl Fischer.

35 (Title) NIGHT CAME ABOARD THE YACHT Polly (Zamecnik) 2 1/2 Min.

Tickling the Ivories

Mod^{to}
 copyr 1926 Sam Fox Pub. Co.

36 (Title) I EXPECT TO BE GONE Berceuse (Jarnefelt) 1 1/2 Min.

All^o
 copyr 1910 Carl Fischer.

37 (Action) POLICE STATION MRS. HAWKES THEME: Unfinished Symphony (Schubert) 1 1/4 Min.

All^o Mod^{to}
 copyr 1896 Carl Fischer.

38 (Action) FLASH TO JIM AND PUDGE Elopement (Carrozzini) 1/2 Min.

Musical notation for item 38, including tempo marking *Vivace* and copyright notice *copyr 1926 Sammeitann music.*

39 (Action) DECK OF YACHT Baby Mine (Rupp) 1 1/4 Min.

Musical notation for item 39, including tempo marking *Mod^{to}* and copyright notice *copyr 1927 Leo Feist Inc.*

40 (Title) MY DADDY JUST WENT OUT TO BIG BOAT. Bridal Chorus (Wagner) 1 1/2 Min.

Musical notation for item 40, including tempo marking *Mod^{to}* and copyright notice *copyr 1911 Emil Hscher.*

41 (Action) PUDGE ON DECK La Foret Perfide (Gabriel Marie) 1/2 Min.

Musical notation for item 41, including tempo marking *All^{to} Mod^{to}* and copyright notice *copyr 1919 Rouart & Lerolle.*

42 (Title) DADDY Turbulence (Borch) 1 Min.

Musical notation for item 42, including tempo marking *Allegato.* and copyright notice *copyr 1918 S.M. Belg.*

43 (Title) WHAT DOES THIS CHILD MEAN? Adventure d'Amour (Bradford) 1 1/2 Min.

Musical notation for item 43, including tempo marking *All^{to}* and copyright notice *copyr 1927 Robbins music corp.*

44 (Title) YOU STOP CALLING MR. NORTON DADDY.. Your Love Is All (Zamecnik) 1/2 Min.

Musical notation for item 44, including tempo marking *Mod^{to}* and copyright notice *copyr 1927 Sam Fox Pub. Co.*

45 (Title) HONEST AND TRULY DADDY THEME: Daddy (Behrend) 2 1/2 Min.

Musical notation for item 45, including tempo marking *Mod^{to}* and copyright notice *Pub by Oliver Dilson*

46 (Title) THE NEXT DAY MRS. HAWKES THEME: Unfinished Symphony (Schubert) 1 1/4 Min.

Musical notation for item 46, including tempo marking *All^{to} Mod^{to}* and copyright notice *copyr 1898 Carl Fischer*

47 (Action) MRS. HAWKES LEAVES O'BRIEN THEME: A Bit O'Blarney (Heli) 1 Min.

Musical notation for item 47, including tempo marking *All^{to}* and copyright notice *copyr 1904 Emil Hscher.*

48 (Title) WELL MISS MOLLY MOLLY THEME: When Irish Eyes Are Smiling (Ball)..... 3/4 Min.

Musical notation for item 48, including tempo marking *Tempo di valse.* and copyright notice *copyr M. Willmark & sons.*

49 (Title) THIS IS MY DADDY PUDGE THEME: Tiny Tot (Lotter) 1/2 Min.

Musical notation for item 49, including tempo marking *All^{to}* and copyright notice *copyr 1924 Hawkes & sons.*

THE END

Complete orchestrations and single piano parts of each separate number contained hereon, can be purchased from CAMEO MUSIC SERVICE CORPORATION, 315-317 WEST 47TH STREET, NEW YORK CITY.

SUGGESTIONS FOR SUBSTITUTIONS, DYNAMICS, EFFECTS, ETC.

- Cue 1. A broad Prelude played "FF" for the opening of the production.
- Cue 2. A light children's Intermezzo or Characteristic to show the gathering of the little urchins, and their glowing fibs to each other.
- Cue 3. A simple child's Barcarolle or Lullaby played with muted strings only.
- Cue 4. MRS. HAWKES THEME: A perpetual movement of a nervous character to show the active energy of this cruel woman.
- Cue 5. A popular lazy sleeping song with appropriate text to follow the languid actions of Jimmie.
- Cue 6. A modern popular girl song with appropriate text of the "gold digger" type to follow the actions of Sylvia.
- Cue 7. A bright snappy Intermezzo in major to follow the quick active movements of Jimmie in his anxiety to keep his appointment.
- Cue 8. MRS. HAWKES THEME.
- Cue 9. A fast Moto Perpetual, One-Step Galop for the speeding auto being pursued by motor Officer.
- Cue 10. O'BRIEN THEME: An Irish Intermezzo, One-Step or March to show the character of the Irish Policeman.
- Cue 11. A comedy Hurry, Galop or Intermezzo to follow the speeding auto on its way to the hospital.
- Cue 12. A Humoresque, Characteristic or Comedy juvenile number to show the nervousness of Jim and the embarrassing situation he is in.
- Cue 13. A sweet juvenile Lullaby, Berceuse, or simple Plaintive selection to follow the distress of the little orphan, Pudge.
- Cue 14. PUDGE THEME: A bright juvenile Intermezzo or Characteristic to show the bright happy nature of the little child.
- Cue 15. A bright 4/4 Caprice in major to show the happiness of the child with her new daddy.
- Cue 16. DADDY THEME: A sweet daddy Ballad to show the love of the child for her new daddy, and to bring out the love of this innocent child.
- Cue 17. PUDGE THEME: A bright juvenile Intermezzo or Characteristic to follow the child's happiness.
- Cut 18. A bright running movement of the ceaseless kind to show the nervous condition of Jimmy caught in an embarrassing situation.
- Cut 19. A Perpetual movement or light Hurry to catch the fall of Judge down stairs and the concern of Jim.
- Cue 20. A bright running movement of the ceaseless kind to show the nervous reaction of Sylvia's telephone call.
- Cue 21. DADDY THEME: Play as previously enumerated.
- Cue 22. A sweet Lullaby or Berceuse played "PP" con sordini strings only, to follow the sleeping child, and to show the growing love of Jim for the little waif.
- Cue 23. MOLLY THEME: An Irish love Ballad with appropriate text to follow this sweet Irish girl and her actions.

- Cue 24. A sweet Lullaby or Berceuse played "PP" con sordini strings only, for the sleeping child sequence.
- Cue 25. PUDGE THEME: You may change and play here "Poupee Valsante" by Poldini, or any other light happy juvenile selection, if you do not care to repeat the Pudge Theme.
- Cue 26. A chatterbox type selection of the ceaseless perpetual kind to show the nervousness of Sylvia and her family over the prevailing situation.
- Cue 27. A sweet child's song of the plaintive nature to show Molly's pity for the little orphan.
- Cue 28. A light Humoresque or Characteristic to show the brightness of the situation and Jim's realization of his importance.
- Cue 29. An active bright 2/4 to show the action and nervous atmosphere preceding the wedding.
- Cue 30. PUDGE THEME or a bright happy juvenile Intermezzo. or "Baby's Opera" tune.
- Cue 31. A Humoresque or medley of baby songs for the "hide-and-seeK" game.
- Cue 32. A light Agitato or Allegro to show the embarrassing situation Jim finds himself in.
- Cue 33. A Perpetual Mobile or Allegro to follow the fast actions and Jim in trying to cover the child peeking through window.
- Cue 34. A light Rubato selection to follow the action of Molly and Pudge outside, and the restrained attitude of Sylvia and her folk.
- Cue 35. A bright modern Fox-Trot, Caprice or Intermezzo to show the levity of the guests on the yacht.
- Cue 36. DADDY THEME or a Berceuse of the sad order to show the broken heart of the little waif.
- Cue 37. MRS. HAWKES THEME: Play as previously enumerated.
- Cue 38. A Perpetual movement of the continual ceaseless type to follow the get-away of Jim and the racing auto, etc.
- Cue 39. A bright happy Fox-Trot or dance tune for the assembled guests on the yacht previous to the wedding.
- Cue 40. The "Bridal Chorus" belongs here and cannot be substituted.
- Cue 41. A nervous uncertain mysterious movement to show the drama that is being enacted.
- Cue 42. A Turbulent or 6/8 Agitato to show the fall of the child overboard and the quick rescue by Jim.
- Cue 43. A Lyric Drama selection to show the disturbance created by the incident, and the uncertainty of the outcome.
- Cue 44. A sweet melody to show the pathetic situation of the little waif and her heart-broken condition. Play "PP" con sordini strings only.
- Cue 45. DADDY THEME: Play as previously enumerated; play "PP" con sordini strings only, very plaintive
- Cue 46. MRS. HAWKES THEME: Play as previously enumerated.
- Cue 47. O'BRIEN THEME: An Irish Intermezzo, One-Step or March to accentuate the Irish Officer.
- Cue 48. MOLLY THEME: An Irish love Ballad with appropriate text to show the sweet nature of this Irish girl, and the final realization of Jim's love for her.
- Cue 49. PUDGE THEME: A bright juvenile Intermezzo or Characteristic to show the real happiness and joy of little Pudge with her new parents.

THE END

Printed in U. S. A.