

M. J. MINTZ (PATENT)  
JULY 31, 1923.

ASHER, SMALL and ROGERS

PRESENT

# CORINNE GRIFFITH

IN

## “THREE HOURS”

Adapted from the story “Purple and Fine Linen”

By May Edginton

Directed by James Flood

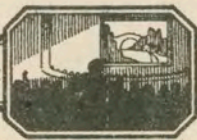
A FIRST NATIONAL PICTURE

MUSIC COMPILED BY

JAMES C. BRADFORD

Orchestrations or single piano parts of each separate musical selection suggested hereon, can be purchased from CAMEO MUSIC SERVICE CORPORATION, 315-317 WEST 47TH STREET, NEW YORK CITY.

MADE IN U. S. A.



M. J. MINTZ (PATENT)  
JULY 31, 1923

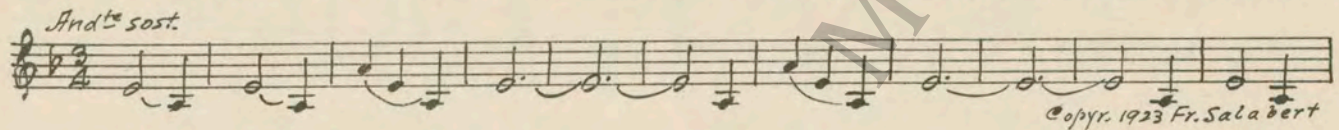
# "THREE HOURS"

Compiled by James C. Bradford

- 1 AT SCREENING ..... Enthousiasmes (Pesse) ..... 1¼ Min.



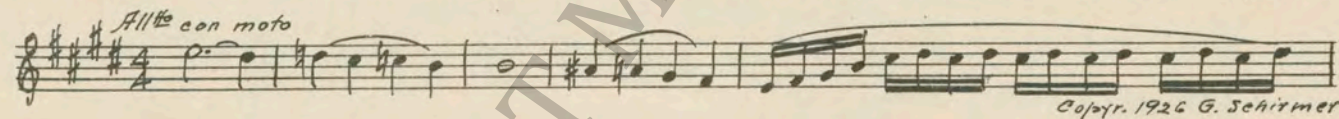
- 2 (Title) ONE OF THOSE NIGHTS ..... L'Angoissante aventure (Gabriel Marie) ..... 3½ Min.



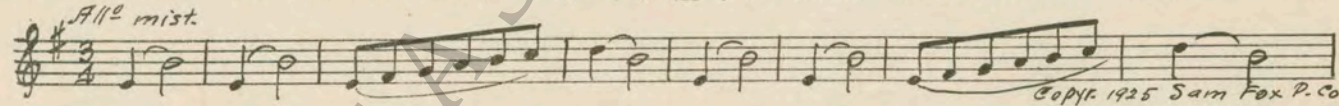
- 3 (Action) AUTOMOBILE ACCIDENT—EXCITEMENT .. Sinister Presto (Bradford) ..... 2½ Min.



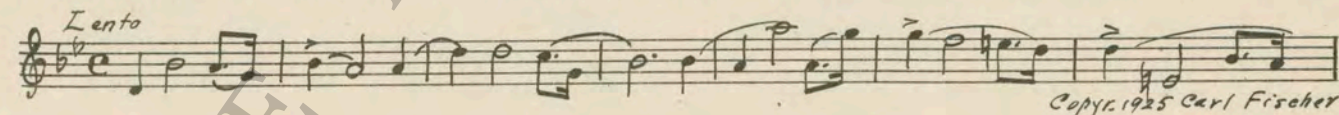
- 4 (Action) CLOCK AT 7:05 ..... After Twilight (Steindel) ..... 3½ Min.



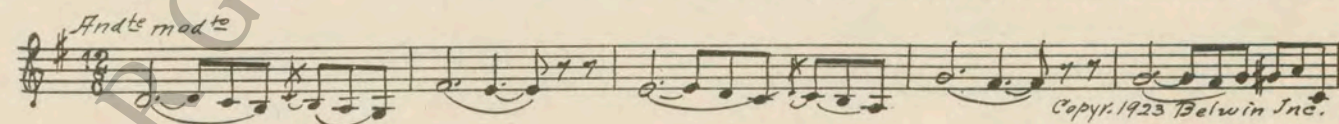
- 5 (Action) **NOTE: Play very quietly until interior of auto sequence, then work up dramatically.**  
MADELINE AND FINLEY ENTER ROOM ... A Mysterious Event (Zamecnik) ..... 3 Min.



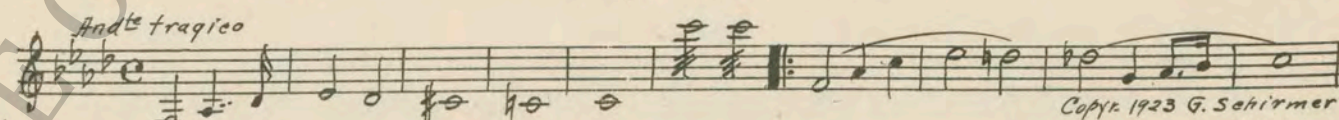
- 6 (Action) FINLEY LEAVES ROOM ..... Souvenir (Herbert) ..... 4¼ Min.



- 7 (Title) IF YOU WILL REMEMBER ..... Romeo's Farewell to Juliet (Baron) ..... 2¼ Min.



- 8 (Action) CAR DRIVES UP TO CURB ..... Tragic Andante (Savino) ..... 1½ Min.



- 9 (Action) CHILD AND MAID ..... Music Box (Primi) ..... 2 Min.



10 (Action) CHILD TAKES HOLD OF MOTHER'S HAND..Mighty Lak' A Rose (Nevin) .....½ Min.

*And<sup>te</sup> mod<sup>to</sup>*  
Musical notation for 'Mighty Lak' A Rose' in G major, 2/4 time, starting with a treble clef and a common time signature. The melody is simple and rhythmic.  
Copyr. 1915 Church Co

11 (Title) GIVE AN ACCOUNT OF YOURSELF .....Repeat No. 8 "Tragic Andante" .....2½ Min.

*And<sup>te</sup> tragico*  
Musical notation for 'Give an Account of Yourself' in E-flat major, 2/4 time, starting with a treble clef and a common time signature. The notation is mostly blank with a few notes.

12 (Title) AT THE PARTY THAT NIGHT .....Whimsical Charms (Fresco) .....1½ Min.

*Valse lento*  
Musical notation for 'At the Party That Night' in D major, 3/4 time, starting with a treble clef and a common time signature. The melody is a waltz.  
Copyr. 1925 Belwin Inc

13 (Action) MADELINE AND CHILD .....Slumber Boat (Gaynor) .....½ Min.

*Mod<sup>to</sup>*  
Musical notation for 'Slumber Boat' in G major, 6/8 time, starting with a treble clef and a common time signature. The melody is gentle and lullaby-like.  
Copyr. 1923 Clayton F. Summy

14 (Action) GILBERT APPEARS .....Dance of Doom from "Suite Tragique" (Rosse) .....1¼ Min.

*Mod<sup>to</sup>*  
Musical notation for 'Dance of Doom' in G major, 3/4 time, starting with a treble clef and a common time signature. The melody is dramatic and rhythmic.  
Copyr. 1925 Bosworth Co

15 (Action) MADELINE ENTERS ROOM—SEES GILBERT.THEME: Chanson Algerian (Bradford) .....2¼ Min.  
NOTE: Play "PP" throughout entire sequence.

*And<sup>te</sup>*  
Musical notation for 'Chanson Algerian' in E-flat major, 2/4 time, starting with a treble clef and a common time signature. The melody is rhythmic and has a North African feel.

Musical notation for 'Chanson Algerian' (continued), featuring a triplet of eighth notes.

Musical notation for 'Chanson Algerian' (continued), featuring a triplet of eighth notes.

Musical notation for 'Chanson Algerian' (continued), featuring a first ending bracket and a second ending bracket.  
Copyr. 1926 Sam Fox

16 (Action) MADELINE AND GILBERT TURN AND FACE JONATHAN .....Wotan (Fietter) .....2½ Min.

*And<sup>te</sup> maestoso*  
Musical notation for 'Wotan' in E-flat major, 2/4 time, starting with a treble clef and a common time signature. The melody is slow and majestic.  
Copyr. 1922 Salabert

17 (Title) YOU POOR CHILD .....Repeat Theme No. 15 .....2½ Min.

*And<sup>te</sup>*  
Musical notation for 'You Poor Child' in E-flat major, 2/4 time, starting with a treble clef and a common time signature. The notation is mostly blank.

18 (Action) VISION OF CHILD .....Repeat No. 10 "Mighty Lak' A Rose" .....½ Min.

*And<sup>te</sup> mod<sup>to</sup>*  
Musical notation for 'Vision of Child' in G major, 2/4 time, starting with a treble clef and a common time signature. The notation is mostly blank.

19 (Title) GO BACK TO HOUSE AND HURRY .....La Foret Perfide (Gabriel Marie) .....1½ Min.

*All<sup>o</sup> myst.*

Copyr. 1919 Rouart Lerolle & Co

20 (Action) JONATHAN PICKS UP NOTE—INSERT .....Agony of the Soul (Bece) .....3¾ Min.

*Largo*

Copyr. 1925 Schlesinger

21 (Action) FLASH-BACK TO TABLE .....Cantilena (Goltermann) .....2¾ Min.

*And<sup>te</sup>*

Copyr. 1923 G. Schirmer

22 (Action) INSERT — LETTER .....Appassionato No. 3 (Axt) .....½ Min.

*Mod<sup>to</sup>*

Copyr. 1926 Robbins Engel

23 (Action) MADELINE LOOKS AT HERSELF IN MIRROR .....Repeat Theme No. 15 .....1¾ Min.

*And<sup>te</sup>*

24 (Title) BUT YOU ARE A MAN .....Unfinished Symphony (Schubert) .....2 Min.

*All<sup>o</sup> mod<sup>to</sup>*

Copyr. Carl Fischer

25 (Action) JONATHAN APPEARS IN DOORWAY.....Mystere Oppressant (Gabriel Marie) .....3¾ Min.

*And<sup>te</sup> molto tranquillo*

Copyr. 1924 S. Chapelier

26 (Action) MADELINE ENTERS DIMLY LIGHTED ROOM .....Prelude (Rachmaninoff) .....3¾ Min.

*Lento*

Copyr. 1923 A. Benjamin

27 (Title) YOU FIEND .....Repeat Theme No. 15.....1 Min.

*And<sup>te</sup>*

28 (Action) JONATHAN APPEARS WITH COAT .....Cup of Bitterness (Zamecnik) .....1½ Min.

*And<sup>te</sup> drammatico*

Copyr. 1925 Sam Fox

29 (Action) AFTER JONATHAN IS SLAPPED IN FACE....Repeat Theme No. 15 .....1½ Min.

*And<sup>te</sup>*

THE END

Printed in U. S. A.

Orchestrations or single piano parts of each separate musical selection suggested hereon, can be purchased from CAMEO MUSIC SERVICE CORPORATION, 315-317 WEST 47TH STREET, NEW YORK CITY.

95:2510:1