

237



WARNER BROS.
Classics of the Screen

PRESENT

An Ernst Lubitsch Production

“THREE WOMEN”

May McAvoy, Pauline Frederick, Marie Prevost

WITH

Lew Cody

Personally Directed By

Ernst Lubitsch

COMPILED BY

JAMES C. BRADFORD

Complete Orchestrations and single parts of all compositions contained herein can be purchased from CAMEO
MUSIC SERVICE CORPORATION, 112-118 West 44th Street, New York City

MADE IN U. S. A.

M. J. BIRNIE PATENT
JULY 21, 1923

"THREE WOMEN"

Music compiled by James C. Bradford

- 1 AT SCREENING Petite Bijouterie (Bohm) 2 Min.

Con moto

f *mp* *pp*

Copyr. 1915, by G. Schirmer.

- 2 (Action) INSERT—INVITATION Peter Piper (Henry) 2 Min.

All^o giusto

mf

Copyr. by Ed. B. Marks & Co.

NOTE: Play Allegro Vivo very snappy and "FF". Wind whistle for sliding bits or roll on S. D.

- 3 (Action) INSERT—BANK STATEMENT I'm Sitting Pretty (Davis) 1 3/4 Min.

Fox Trot

Copyr. 1923, by M. Witmark & Sons.

- 4 (Title) DO YOU KNOW Marionette (Arndt) 1 1/4 Min.

All^o *gva*

Copyr. by Sam Fox Pub. Co.

- 5 (Action) ORCHESTRA ON BALCONY STARTS TO PLAY Runnin' Wild (Gibbs) 1 1/4 Min.

Fox Trot

Copyr. 1923 by Leo Feist Inc.

NOTE: Diminish for fade-out and finish.

- 6 (Action) DOORWAY OF HOTEL Prelude (Jarnfelt) 3 1/2 Min.

All^o quasi All^o

Copyr. 1923, by G. Schirmer.

- 7 (Action) MRS. WILTON LEAVES MEN IN RECEPTION ROOM That Bran' New Gal O' Mine (Akst) 1/2 Min.

Taxx *gva*

Copyr. 1923, by M. Witmark & Sons

NOTE: Play refrain only. Piano Solo "P".

- 8 (Action) LAMONT LEAVES PIANO Intermezzo (Granados) 2 1/2 Min.

Lento espress.

Copyr. by G. Schirmer.

NOTE: Play very slowly and subdued.

- 9 (Action) LAMONT RETURNS TO FRIEND Aubade Printanier (Lacombe) 2 Min.

All^o

p

Copyr. 1889 by Carl Fischer.

This is like "a la Bien Aimee" by Schmitt

10 (Action) MRS. WILTON ALONE Valse Divine (Rosey) 3/4 Min.

Waltz
p
Copyr. 1915, by G.M. Rosenberg

11 (Action) INSERT-LETTER FROM JEANNE Trysting Place (Schertzing) 3/4 Min.

Mod^{to} plaintively
Copyr. 1924, by Photo Play Music Co

NOTE: Play "PP" con sordini, strings only.

12 (Title) AN IMPORTANT EVENT Bohemiana (Smith) 2 1/2 Min.

All^o
p
Copyr. 1909 by Carl Fischer.

13 (Title) FRED COLEMAN THEME: The World is Waiting for the Sunrise (Seitz) 1 Min.

Mod^{to}
Copyr. 1922, by Chappell & Co.

14 (Action) FLASH-BACK TO PARTY Somebody (Little) 1 Min.

One Step.
Copyr. 1919, by M. Richmond Music

15 (Action) BOY STARTS PHONOGRAPH I Love You (Archer) 2 Min.

Mod^{to}
Copyr. 1923, by Leo Feist Inc.

16 (Title) FROM MY MOTHER Mother (Romberg) 1 Min.

Have

Valse lento
Copyr. by G. Schirmer.

17 (Action) RAILROAD STATION Moto Perpetuo (Weiss) 1 Min.

All^o Eccitato
Copyr. 1924, by Geo H. Sanders.

NOTE: Diminish as train pulls away.

18 (Title) A FEW DAYS LATER Valse Poudree (Popy) 2 3/4 Min.

Have

Tempo Valse Mod^{to}
Copyr. 1912 by Ross Jungnickel.

19 (Action) NEW YORK STREET SCENE The Streets of New York (Herbert) 1/2 Min.

Have

Tempo di Valse
p
Copyr. by Carl Fischer.

from Red mill

20 (Action) FLASH-BACK TO MRS. WILTON AND LAMONT Intermezzo (Granados) 1 3/4 Min.

Musical notation for Intermezzo (Granados). Key signature: one sharp (F#). Time signature: 3/4. The melody is written on a single staff in treble clef. It begins with a quarter note G4, followed by a quarter note A4, a quarter note B4, and a quarter note C5. The piece concludes with a quarter note G4. Copyright: Copyr. by G. Schirmer.

NOTE: Drummer catch doorbell ring.

21 (Title) MOTHER! Twilight (Cesek) 2 Min.

Musical notation for Twilight (Cesek). Key signature: one sharp (F#). Time signature: 3/4. The melody is written on a single staff in treble clef. It begins with a quarter note G4, followed by a quarter note A4, a quarter note B4, and a quarter note C5. The piece concludes with a quarter note G4. Copyright: Copyr. 1923, by Carl Fischer.

22 (Title) YOU HAVE DISPLEASED Love Scene (Vecsey) 2 1/2 Min.

Musical notation for Love Scene (Vecsey). Key signature: one sharp (F#). Time signature: 3/4. The melody is written on a single staff in treble clef. It begins with a quarter note G4, followed by a quarter note A4, a quarter note B4, and a quarter note C5. The piece concludes with a quarter note G4. Copyright: Copyr. 1921, by G. Schirmer.

23 (Title) DID YOU CALL ME Marche Mignonne (Poldini) 1 Min.

Musical notation for Marche Mignonne (Poldini). Key signature: one sharp (F#). Time signature: 3/4. The melody is written on a single staff in treble clef. It begins with a quarter note G4, followed by a quarter note A4, a quarter note B4, and a quarter note C5. The piece concludes with a quarter note G4. Copyright: Copyr. 1920, by G. Schirmer.

NOTE: Play slowly and deliberately "P".

24 (Title) TO KNOW LONELINESS A Broken Heart (Schertzinger) 3 Min.

Musical notation for A Broken Heart (Schertzinger). Key signature: one sharp (F#). Time signature: 3/4. The melody is written on a single staff in treble clef. It begins with a quarter note G4, followed by a quarter note A4, a quarter note B4, and a quarter note C5. The piece concludes with a quarter note G4. Copyright: Copyr. 1924, by Photo Play Music Co.

25 (Title) YOU'RE OLD ENOUGH Cantilena (Goltermann) 2 1/4 Min.

Musical notation for Cantilena (Goltermann). Key signature: one sharp (F#). Time signature: 3/4. The melody is written on a single staff in treble clef. It begins with a quarter note G4, followed by a quarter note A4, a quarter note B4, and a quarter note C5. The piece concludes with a quarter note G4. Copyright: Copyr. 1923, by G. Schirmer.

26 (Action) LAMONT PHONING MRS. WILTON Jealous (Little) 2 1/4 Min.

Musical notation for Jealous (Little). Key signature: one sharp (F#). Time signature: 3/4. The melody is written on a single staff in treble clef. It begins with a quarter note G4, followed by a quarter note A4, a quarter note B4, and a quarter note C5. The piece concludes with a quarter note G4. Copyright: Copyr. 1924, by Henry Waterson Inc.

27 (Title) A FEW HOURS LATER Chanson Melancholique (Collinge) 2 Min.

Musical notation for Chanson Melancholique (Collinge). Key signature: one flat (Bb). Time signature: 3/4. The melody is written on a single staff in treble clef. It begins with a quarter note G4, followed by a quarter note A4, a quarter note B4, and a quarter note C5. The piece concludes with a quarter note G4. Copyright: Copyr. 1920, by Belwin Inc.

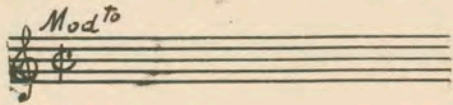
28 (Title) THE NEXT MORNING L'Encore (Herbert) 3 3/4 Min.

Musical notation for L'Encore (Herbert). Key signature: one sharp (F#). Time signature: 3/4. The melody is written on a single staff in treble clef. It begins with a quarter note G4, followed by a quarter note A4, a quarter note B4, and a quarter note C5. The piece concludes with a quarter note G4. Copyright: Copyr. 1910, by M. Witmark & Co.

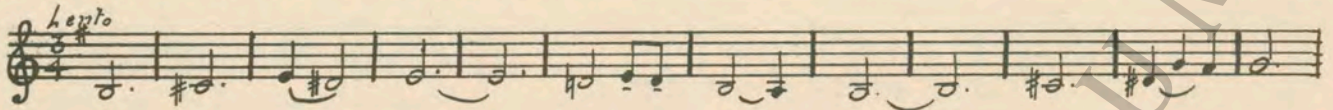
29 (Action) LAMONT OPENS LETTER FROM FRED Dram. Tension No. 67 (Shepherd) 2 Min.

Musical notation for Dram. Tension No. 67 (Shepherd). Key signature: one sharp (F#). Time signature: 3/4. The melody is written on a single staff in treble clef. It begins with a quarter note G4, followed by a quarter note A4, a quarter note B4, and a quarter note C5. The piece concludes with a quarter note G4. Copyright: Copyr. 1917, by S. M. Berg.

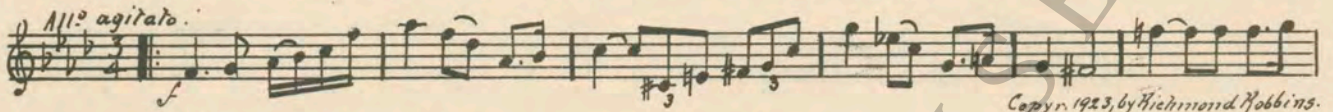
30 (Action) INSERT—PHOTO OF THREE GIRLS Repeat Theme No. 13 1¼ Min.



31 (Action) FLASH-BACK TO LAMONT IN APARTMENT .Intermezzo (Granados) 1½ Min.



32 (Title) LET ME GOAppassionato No. 1 (Rapee Axt) 3 Min.



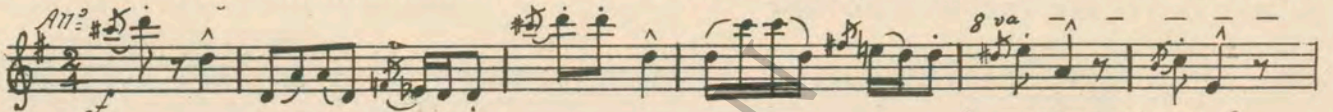
Copyr. 1923, by Richmond Robbins.

33 (Action) MRS. WILTON HURRIES FROM ROOMAffizione (Gabriel Mariie) ¾ Min.



Copyr. by Ricordi.

34 (Title) A FEW WEEKS LATERSunshine and Roses (Borch) 2 Min.



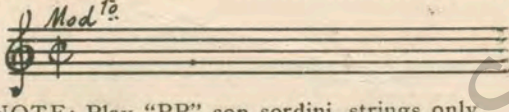
Copyr. 1921, by Belwin Inc.

35 (Title) MRS. LAMONT La Coquette (Rapee-Axt) 3½ Min.



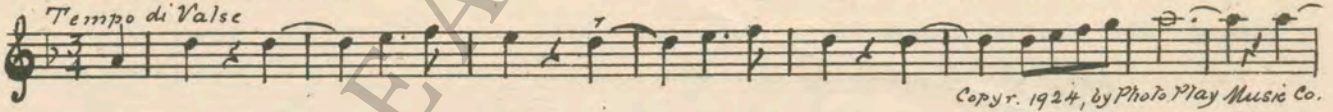
Copyr. 1923, by Richmond Robbins.

36 (Title) WHO IS SHE FRED Repeat Theme No. 13 3¼ Min.



NOTE: Play "PP" con sordini, strings only.

37 (Action) FRED LEAVES JEANNEYvonne Waltzes (Schertzing) 2¼ Min.



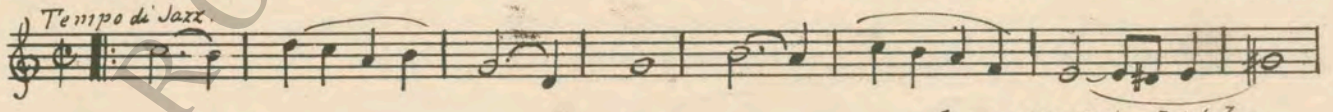
Copyr. 1924, by Photo Play Music Co.

38 (Action) FRED AND MOTHER AT TABLEA Summer Morning (Ewing) 1 Min.



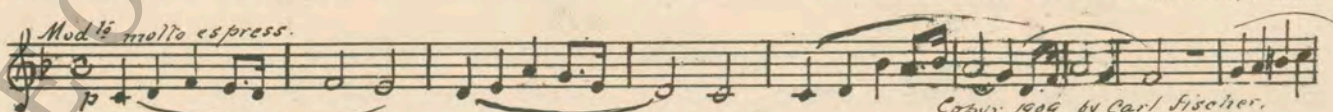
Patent 1909 by Keith Brown & Co.

39 (Title) AT THE MONKEY CAFETake Oh Take Those Lips Away (Tierney) 1 Min.



Copyr. 1923, by Leo Feist Inc.

40 (Action) JEANNE ALONE IN BOUDOIR Quietude (Grieg) ½ Min.



Copyr. 1909, by Carl Fischer.

41 (Action) FLASH-BACK TO CAFEMamma Loves Papa (Baer) 2¼ Min.



42 (Action) LAMONT AND GUEST START ARGUMENT ..Agitato No. 4 (Zamecnik)2½ Min.

Musical notation for item 42, starting with *All^o* and *f*. Copyright 1924, by Sam Fox Pub. Co.

NOTE: Diminish and fade-out as Lamont is placed in waiting auto.

43 (Action) JEANNE IN BED Dram. Reproach (Berge)3½ Min.

Musical notation for item 43, starting with *And^{te} espressivo*. Copyright 1919, by Belwin Inc.

44 (Action) MRS. WILTON IN BOUDIOR Pleading Love Theme (Bradford)1 Min.

Musical notation for item 44, starting with *And^{te}*. Copyright 1924, by Belwin Inc.

45 (Title) MORNING Forget Me Not (Macbeth)1 Min.

Musical notation for item 45, starting with *All^o* and *p*. Copyright by Carl Fischer.

NOTE: Play slowly a la burlesque.

46 (Action) JEANNE, FRED AND MOTHER Dram. Tension No. 64 (Borch)1¼ Min.

Musical notation for item 46, starting with *And^{mo} con moto* and *f*. Copyright 1917, by S.M. Berg.

47 (Title) A LADY WISHES TO SEE YOU Love Tragedy (Savino)3¾ Min.

Musical notation for item 47, starting with *And^{te} tragico*. Copyright 1924, by Richmond Robbins.

48 (Title) MRS. WILTON HAS GONE TO Appassionato No. 1 (Rapee-Axt)3¾ Min.

Musical notation for item 48, starting with *All^o agitato* and *f*. Copyright 1923, by Richmond Robbins Inc.

NOTE: Drummer catch shot; then a short silence period with soft timpany roll.

49 (Action) MRS. WILTON CLOSE-UP Valse Triste (Silbelius)1¾ Min.

Musical notation for item 49, starting with *Valse lento* and *mp*. Copyright 1923 by Breitkopf & Har Tel.

NOTE: Play first two strains only, then D. C. very slow.

50 (Action) INSERT—NEWSPAPER SCANDAL The Verdict (Zamecnik)1½ Min.

Musical notation for item 50, starting with *And^{te} Mod^{to}*. Copyright 1922 by Sam Fox Pub. Co.

NOTE: Play "P" throughout entire first part until verdict of "Not Guilty".

51 (Action) JEANNE AND MRS. WILTON ENTER ROOM. Nocturne (Karganoff)1½ Min.

Musical notation for item 51, starting with *Andantino* and *mf*. Copyright 1923, by Carl Fischer.

52 (Action) FRED AND JEANNE ALONE Repeat Theme No. 13¾ Min.

Musical notation for item 52, starting with *Mod^{to}*.

THE END

Complete Orchestrations and single parts of all compositions contained herein can be purchased from Cameo Music Publishing Co., Inc., 112-118 West 44th Street, New York City