

WARNER BROS.

WITH

DAVID BELASCO

PRESENT

LEONORE AULRIC

IN

“TIGER ROSE”

A SIDNEY FRANKLIN PRODUCTION

WARNER BROS.
Classics of the Screen

COMPILED BY

JAMES C. BRADFORD

Complete Orchestrations and single parts of all compositions contained herein can be purchased from
CAMEO MUSIC PUBLISHING CO., INC., 112-118 West 44th Street, New York City

MADE IN U. S. A.

'TIGER ROSE'

Compiled by James C. Bradford

- 1 AT SCREENING Laurentian Echoes (Laurendeau) 2 Min.

All.^o deciso
 Copyr. 1918, by Carl Fischer.

- 2 (Title) WHY THAT'S SERGEANT DEVLIN Tumultuoso (Gabriel Marie) 2 Min.

Vivace
 S. A. Ricordi (Paris.)

- 3 (Action) DEVLIN WALKS FROM MEN FOLLOWING NARRATIVE Elegie (Grieg) 1½ Min.

And.^{te}
 Copyr. 1919, by Louis Jungnickel.

- 4 (Title) FOR LONG TIME Lamentoso No. 46 (Borch) 1½ Min.

Adagio
 Copyr. 1917, by S. M. Berg

- 5 (Title) UNDER THE SHELTERING ROOF French Canadian Airs (Harris) (Piccolo solo) 1¼ Min.

Mod.^{to}
 Copyr. 1889, by Carl Fischer

- 6 (Action) DEVLIN STARTS TO PLAY Wearing of the Green (Piccolo solo) ½ Min.

All.^o Mod.^{to}

- 7 (Action) ROSE ENTERS ROOM Fleurette (Herbert) 2½ Min.

Valse Lenta
p *molto rubato*
 Copyr. 1903, by M. Witmark & Sons

- 8 (Title) THE ADVANCE GUARD By the Saskatchewan (Caryll) 3 Min.

Mod.^{to}
mf
 Copyr. 1911 by Chappell & Co. Ltd.

- 9 (Title) THE STUDY OF ENGINEERING Pulcinello (Aletter) 3 Min.

Alleg.^{ro}
p
 Copyr. 1912, by G. Schirmer.

- 10 (Title) WHEN I TELL YOU I Can't Do the Sum (Herbert) ¾ Min.

All.^o
p *slacc.*
 Copyr. 1918, by M. Witmark & Sons.

- 11 (Action) FLASH-BACK TO ROSE, PRIEST AND OLD MAN Evening Mood (Czerwonky) 1¼ Min.

Molto espressivo
p
 Copyr. 1920, by Carl Fischer.

12 (Title) THAT EVENING Elegie (Lubomirsky) (1st move.—muted brass—omit cadenzas). ½ Min.

Musical notation for 'THAT EVENING' in G major, 3/4 time, featuring a melodic line with slurs and ties. Copyright: 1918, by G. Schirmer.

13 (Action) BRUCE AND ROSE ON ROCKS THEME: Tiger Rose Waltzes (De Rose) 3½ Min.

Musical notation for 'BRUCE AND ROSE ON ROCKS' in 3/4 time, marked 'Valse lento' and 'rit'. Includes first and second endings. Copyright: by F. B. Haviland Pub. Co.

14 (Title) NIGHTFALL Agitato (Berge) 3 Min.

Musical notation for 'NIGHTFALL' in G major, 2/4 time, marked 'Mod.to' and 'pp'. Copyright: 1922, by Hoes Jungnickel.

15 (Title) HELEN WAS MY SISTER Allegro (Bach) 1 Min.

Musical notation for 'HELEN WAS MY SISTER' in G major, 3/4 time, marked 'Allegro' and 'p'. Copyright: 1916, by Carl Fischer.

16 (Title) SINCE THE FIRST FLUSH Repeat Theme No. 13 2 Min.

Musical notation for 'SINCE THE FIRST FLUSH' in G major, 3/4 time, marked 'Valse lento'. Copyright: by F. B. Haviland Pub. Co.

17 (Action) DEVLIN AT TELEPHONE Allegro Precipitoso (Savino) 4½ Min.

Musical notation for 'DEVLIN AT TELEPHONE' in G major, 2/4 time, marked 'Allegro precipitoso'. Copyright: 1923, by G. Schirmer.

18 (Title) THE END OF A LONG DAY Repose of the Forest (Grieg) 1 Min.

Musical notation for 'THE END OF A LONG DAY' in G major, 3/4 time, marked 'Molto tranquillo'. Copyright: 1916, by Hoes Jungnickel.

19 (Action) DEVLIN ENTERS Agitato No. 1 (Rapee-Axt) 3¾ Min.

Musical notation for 'DEVLIN ENTERS' in G major, 2/4 time, marked 'Allegro (agitato)'. Copyright: by Richmond Robbins Inc.

20 (Action) DEVLIN SPES HANDKERCHIEF ON FLOOR Andante Misterioso (Lake) 1½ Min.

Musical notation for 'DEVLIN SPES HANDKERCHIEF ON FLOOR' in G major, 3/4 time, marked 'And.to'. Copyright: 1914, by Carl Fischer.

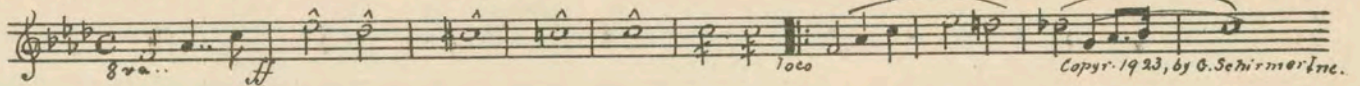
21 (Title) TWO HOURS LATER Misterioso Dramatico (Borch) 3 Min.

Musical notation for 'TWO HOURS LATER' in G major, 3/4 time, marked 'Allegro giusto'. Copyright: 1919, by Bertini Inc.

22 (Title) DARLING YOU MUST THINK Misterioso No. 3 (Minot) 6 Min.

Musical notation for 'DARLING YOU MUST THINK' in G major, 3/4 time, marked 'Mod.to'. Copyright: 1916, by S. M. Berg.

23 (Action) ROSE ENTERS HER ROOM Tragic Andante (Savino) 2 Min.



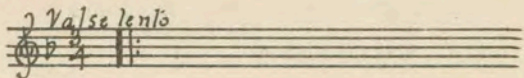
24 (Title) THE COLD GRAY HOUR Molto Agitato No. 1 (Breil) 2½ Min.



25 (Action) DOCTOR FIRES GUN—PURSUED Agitato No. 44 (Brockton) 1½ Min.



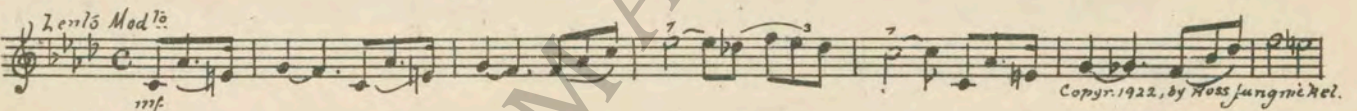
26 (Action) ROSE AND BRUCE IN CABIN Repeat Theme No. 13 1 Min.



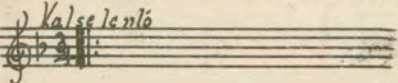
27 (Action) THEY HEAR NOISE—DOCTOR ENTERS Misterioso No. 82 (Berge) 1¼ Min.



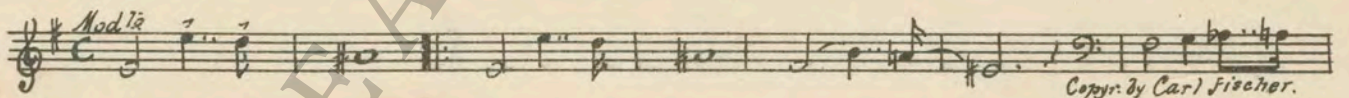
28 (Title) TELL ME WHY YOU Dramatic Lamento (Berge) 1½ Min.



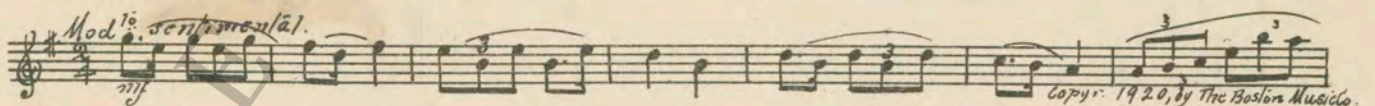
29 (Title) COME BRUCE Repeat Theme No. 13 1 Min.



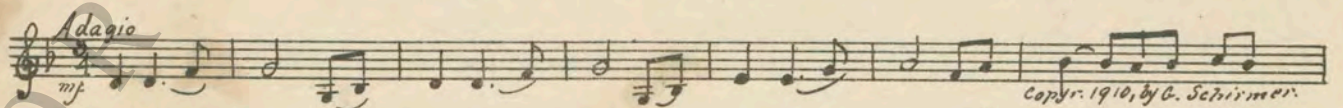
30 (Action) DEVLIN APPEARS FROM WALL Fourteen Fathoms Deep (Lake) 2 Min.



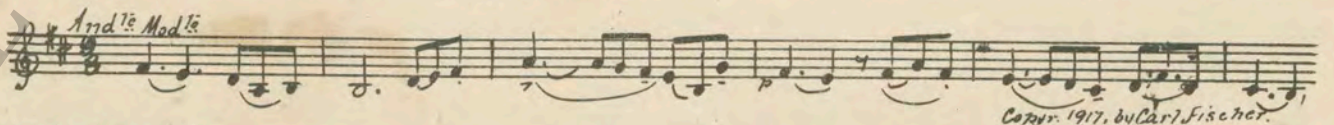
31 (Action) FADE OUT AFTER BRUCE LEAVES CABIN Sylvan Sketches (Helm) 2 Min.



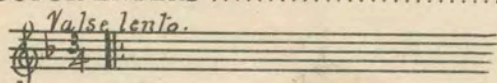
32 (Action) DOOR BLOWS OPEN Adagio Pathetique (Godard) 2½ Min.



33 (Title) AND WHEN THE FIRST SNOWS OF WINTER Extase (Ganne) 2 Min.



34 (Action) DOCTOR ENTERS Repeat Theme No. 13 1½ Min.



THE END

Complete Orchestrations and single parts of all compositions contained herein can be purchased from
CAMEO MUSIC PUBLISHING CO., INC., 112-118 West 44th Street, New York City

95:2524:1