



WILLIAM FOX SPECIAL PRODUCTION
“A TRIP TO CHINATOWN”

Music compiled by Michael P. Krueger
The timing is based on speed of 12 minutes per reel

- 1 AT SCREENING Otaki (Bereny) 1 Min.

Mod^{to}

 Copyright 1914 E.B. Marks

- 2 (Title) WELLAND STRONG Pulcinello (Aletter) 2 Min.

F/11th

 Copyright 1912 G. Schirmer

SEGUE: Harold and Mildred (Finck)

F/11th

 Copyright 1923 Hawkes & Son

- 3 (Action) WOMAN WITH DOG SEEN FOLLOWED BY CROWD Vamping Sal (Pollack) 1 1/4 Min.

Jazz

 Copyright 1923 Witmark & Son

- 4 (Title) ALL MY LIFE THEME: I'm Falling in Love With Someone (Herbert) 1 Min.

Valse lento

 Copyright 1910 Witmark & Sons

- 5 (Action) TRAIN STARTS Gossip (Borch) 1 3/4 Min.

All^o

 Copyright 1925 Belwin Inc

- 6 (Action) TALKATIVE WOMAN RUNS OFF Frivolous Cupids (Schoenfeld) 1 3/4 Min.

F/11th

 Copyright 1920 Photo Play M.C.

- 7 (Action) ACTRESS SEEN Merry Pranks (Rapee-Axt) 1 Min.

All^o

 Copyright 1923 Robbins Engel

- 8 (Title) I'M GOING TO SAN FRANCISCO TO SPEND MY LAST SIX WEEKS Repeat Theme No. 4 1 3/4 Min.

- 9 (Action) CHANGE OF SCENE TO HONEYMOON COUPLE ON SLEEPER Repeat No. 6 "Frivolous Cupids" 3/4 Min.

All^o

10 (Action) EARLE FOX ENTERS HIS BERTH Pepita (Montzan) 2 Min.

Musical notation for Earle Fox Enters His Berth. Treble clef, 2/4 time, key signature of two flats. Tempo: March. Dynamics: mf. Copyright: 1926 Robbins - Engel.

11 (Action) HUSBAND SEES INVALID—LEAVE WIFE'S BERTH Farcial Allegro (Aborn) 3¼ Min.

Musical notation for Husband Sees Invalid—Leave Wife's Berth. Treble clef, 2/4 time, key signature of two flats. Tempo: All. Mod. Dynamics: mf. Copyright: 1923 Bolwin.

12 (Title) SAN FRANCISCO Blue Law Blues (Lake) 2 Min.

Musical notation for San Francisco. Treble clef, 2/4 time, key signature of two flats. Tempo: Mod. Dynamics: mf. Copyright: 1921 Carl Fischer.

13 (Title) FIRE Hurry No. 4 (Finck) 1 Min.

Musical notation for Fire. Treble clef, 2/4 time, key signature of two flats. Tempo: All. vivo. Copyright: 1922 Hawkes & Son.

14 (Title) BE CALM, LIKE I AM Halimar (Banta) ¾ Min.

Musical notation for Be Calm, Like I Am. Treble clef, 2/4 time, key signature of two flats. Tempo: All. Mod. Dynamics: mf. Copyright: 1926 G. Ascher.

15 (Action) AUTOMOBILE DRIVES UP TO HOUSE Happy Go Lucky (Kaufman) 1¼ Min.

Musical notation for Automobile Drives Up to House. Treble clef, 2/4 time, key signature of two flats. Tempo: All. Copyright: 1924 Robbins - Engel.

16 (Action) DANCING STARTS Honey Bunch (Friend) ¾ Min.

Musical notation for Dancing Starts. Treble clef, 2/4 time, key signature of two flats. Tempo: Fox-Trot. Dynamics: mf. Copyright: 1925 Shapiro + Bernstein.

17 (Title) AREN'T YOU ASHAMED Daddy, You've Been a Mother to Me (Fisher) 1 Min.

Musical notation for Aren't You Ashamed. Treble clef, 2/4 time, key signature of two flats. Tempo: Lento. Dynamics: mf. Copyright: 1920 Mc. Carthy & Fischer.

18 (Title) UNCLE BEN, PLEASE TAKE OFF YOUR HAT Where Did You Get That Hat? (Sullivan) 3¾ Min.

Musical notation for Uncle Ben, Please Take Off Your Hat. Treble clef, 2/4 time, key signature of two flats. Tempo: Mod. Dynamics: mf. Copyright: 1916 F. Harding.

SEGUE: Oh! You Lulu Belle (Henderson)

Musical notation for Oh! You Lulu Belle. Treble clef, 2/4 time, key signature of two flats. Tempo: Fox-Trot. Dynamics: mf. Copyright: 1926 Shapiro + Bernstein.

19 (Title) ALICIA Fascination (Lenzberg) 1¼ Min.

Musical notation for Alicia. Treble clef, 2/4 time, key signature of two flats. Tempo: Mod. Dynamics: mf. Copyright: 1923 Harms Inc.

20 (Title) MR. STRONG WILL ARRIVE LATER Repeat No. 11 "Farcial Allegro" 3¼ Min.

21 (Action) INVALID RECOGNIZES WIDOW Repeat Theme No. 4 2¼ Min.

Musical notation for Invalid Recognizes Widow. Treble clef, 2/4 time, key signature of two flats. Tempo: Walse Lento.

22 (Action) CHANGE OF SCENE TO INTERIOR Idle Dreams (Finck) 1 Min.

Musical notation for Change of Scene to Interior. Treble clef, 2/4 time, key signature of two flats. Tempo: And. Copyright: 1921 Hawkes.

23 (Action) **STRONG SEES LADDER AT HIS WINDOW**... Misterioso Burlesque (Savino) ¾ Min.

All^o mod^o

Copyr. 1924 Robbins Engel.

24 (Title) **WHAT ARE YOU DOING IN THIS ROOM**.... Furieuse Poursuite (Fosse) 2¼ Min.

All^o agitato

Copyr. 1925 Chapelier

25 (Title) **GET OUT OF MY HOUSE** En Carriole (Gabriel Marie) ¾ Min.

Con spirito

Copyr. 1924 Chapelier.

26 (Action) **UNCLE WALKS OVER TO WINDOW** Funny Fellow (Frank) 2½ Min.

Mod^o

Copyr. 1905 Walter Jacobs

27 (Title) **TWENTY-FOUR HOURS BEFORE THE END**. Funeral March (Lanciani) 1¼ Min.

All^o mod^o

Copyr. 1912 G. Schirmer.

SEGUE: Hearts and Flowers (Tobani) (Play softly)

Burlesque

Copyr. 1899 C. Fischer.

28 (Action) **UNCLE AND WIDOW SEATED TOGETHER**.. Repeat No. 3 "Vamping Sal" ¾ Min.

29 (Title) **NICE OF YOU TO BRING FLOWERS** Yes Sir, That's My Baby (Donaldson) ½ Min.

Fox-Trot

Copyr. 1925 Irving Berlin

30 (Title) **I KNOW WELLAND LOVES ME** Repeat Theme No. 4 1¾ Min.

31 (Title) **THIS HOUSE PHONES** Then I'll Be Happy (Friend) 1 Min.

Mod^o

Copyr. 1925 Irving Berlin

32 (Title) **IT WAS ALICIA** Bleeding Hearts (Levy) ¾ Min.

And^{te}
mf

Copyr. 1918 Belwin.

33 (Action) **BLOND GIRL AT TELEPHONE** When A Blond Makes Up Her Mind (Mills) 1 Min.

Mod^o

Copyr. 1925 Jack Mills.

34 (Action) **ALICIA WALKS OVER TO EARLE FOX** Lovesick Blues (Friend) ¾ Min.

Mod^o

Copyr. 1923 Jack Mills

35 (Title) **CHINATOWN** Kai-Fang-Foo (Hoyt) 1¼ Min.

Mod^o

Copyr. 1916 Ascher.

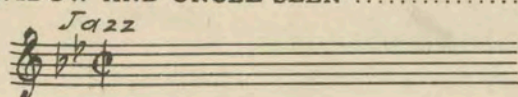
36 (Action) **CHANGE OF SCENE TO NEWLYWED COUPLE** Marriage Blues (Berkin) 1 Min.

Fox-Trot
p-f

Copyr. 1920 Belwin.

NOTE: Start "FF" and play to action.

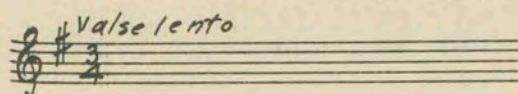
37 (Action) WIDOW AND UNCLE SEEN Repeat No. 3 "Vamping Sal" ½ Min.



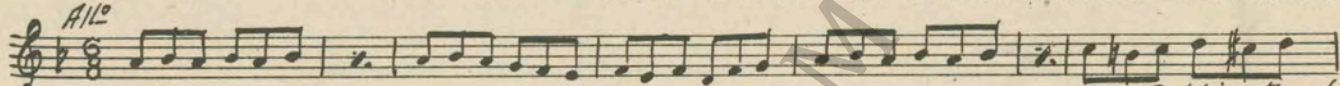
38 (Title) DID YOU KNOW THAT UNCLE BEN Novelletta (D'Ambrosio) 1 Min.



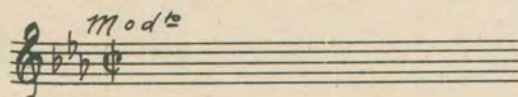
39 (Action) STRONG ENTERS ROOM WHERE GIRL IS CRYING Repeat Theme No. 4 ¼ Min. *Copyr. 1913 Carl Fischer*



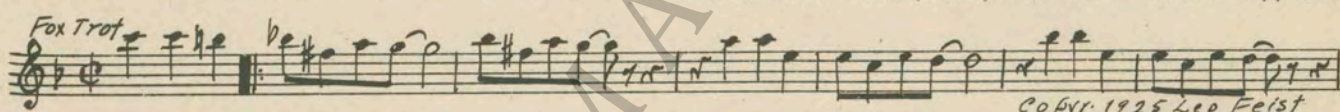
40 (Title) NOTE: Stop when girl lifts head. BETTER LEAVE BEFORE MY HUSBAND SEES YOU Emotional Agitato (Savino) 3 Min.



41 (Title) YOU'LL NEED ALL YOUR COURAGE Repeat No. 33 "When A Blond Makes Up Her Mind" 1½ Min. *Copyr. 1925 Robbins Engel*



42 (Action) BLOND WOMAN LEAVES He's Just a Horn-Tootin' Fool (Davis) ¾ Min.

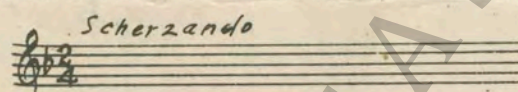


43 (Action) CHANGE OF SCENE TO EXTERIOR Scherzando Hurry (Frey) ¾ Min. *Copyr. 1925 Leo Feist*



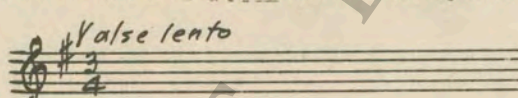
44 (Action) CHANGE OF SCENE TO BACK STAGE Repeat No. 1 "Otaki" 2 Min. *Copyr. 1925 Robbins Engel*

45 (Action) MAN RUNS ON STAGE WITH GUN Repeat No. 43 "Scherzando Hurry" ¾ Min.

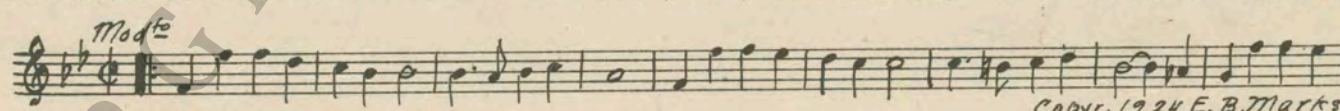


46 (Action) FLASH-BACK TO HONEYMOONERS Repeat No. 31 "Then I'll Be Happy" 1 Min.

47 (Title) I'VE BEEN LOOKING ALL OVER Repeat Theme No. 4 ¾ Min.

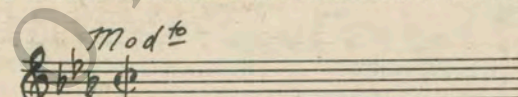


48 (Title) MY HOUR HAS COME That's A Lot of Bunk (Henshaw) ½ Min.



49 (Action) NOTE: Play slowly and softly. GIRL RUNS OVER TO SWEETHEART Repeat Theme No. 4 ½ Min. *Copyr. 1924 E. B. Marks*

50 (Title) I HAVE CHANGED OUR MINDS Repeat No. 33 "When A Blond Makes Up Her Mind" ½ Min.



51 (Action) CHANGE OF SCENE TO EXTERIOR Repeat Theme No. 4 1 Min. **THE END**

Country of Origin, U. S. A.

Complete orchestrations and single piano parts of each separate number contained hereon, can be purchased from CAMEO MUSIC SERVICE CORPORATION, 315-317 West 47th Street, New York City.