

Greater Thematic
MUSIC CUE SHEET

11/5

UNCLE
TOM'S
CABIN

THE GREATEST HUMAN DRAMA EVER SCREENED
CARL LAEMMLE'S
OUTSTANDING ACHIEVEMENT — A HARRY POLLARD PRODUCTION

GREATER THEMATIC MUSIC SCORE
for
"UNCLE TOM'S CABIN"

by
JAMES C. BRADFORD

SUGGESTIONS

*On the Musical Atmosphere of "Uncle Tom's Cabin"
and Details for the Handling of Special Effects.*

"UNCLE TOM'S CABIN" is an epic of the old South, and embraces one of the most stirring and picturesque periods in American history—it has graced the boards of American theatres for seventy-five years.

THROUGH the medium of this beautiful drama, probably the greatest human story ever written, countless stars have been made. There is scarcely an old actor or actress living, who has not at some time played some part in "Uncle Tom's Cabin"; the names of "Eliza," "Uncle Tom," "Little Eva," "Topsy," "Simon Legree" and "Marks the Lawyer," are American household words.

THIS motion picture, then, is dedicated to the American people, so that there may be preserved for all time, a classic of American life that takes rank with the works of Victor Hugo and Charles Dickens in their interpretations of other periods in older lands. It is therefore most important that you adhere strictly to the old American tunes of the South, in order to establish that quaint atmosphere well known to us all.

WHILE the Greater Thematic Music Score sheet, as herein contained, represents my conception of the picture's atmosphere, I do not necessarily mean to convey the impression that substitutions for numbers I have suggested cannot be effectively made. On the contrary, if your library does not contain all of the suggested numbers in the Greater Thematic Music Score sheet, or, if you feel that with your combination of instruments, you can improve a particular situation by making a change, you will at least be able to get the original idea of the prevailing atmosphere or more, through having the line of music to guide you, as presented on the following pages. It is essential, however, that the music be Southern in character with the exception of the "high spots" and character themes.

REGARDLESS of whether the musical numbers, as suggested, be played, or whether you make the substitutions, it is of the utmost importance what the effects suggested on the cue sheet be religiously carried out.

PART 1

Cues 1, 2. A short broad Prelude of about twelve measures—introducing "Swanee River" in paraphrase style. Segue to No. 2, as enumerated on the music sheet, starting at the Oboe Solo, the Andante movement.

Cue 3. A popular song of the Southern Army—"The Bonnie Blue Flag"; play in a dignified style for the insert of General Robert E. Lee.

Cues 4, 5. A bright neutral Southern tune of activity and happiness for a cheerful day on the old plantation.

Cue 6. An original old Southern "darkey" air to follow the singing of the little picaninnies when they see Eliza

Cue 7. A light Allegretto in 6/8 tempo.

Cue 8. Repeat the picaninnies' song at Cue No. 6.

Cue 9. A melodious Andante of the sentimental style.

Cue 10. A bright Southern Intermezzo of the Sand Dance style.

Cue 11. A melodious Amoroso to show the kindly nature of Shelby.

Cue 12. A Maestoso selection of the "Wedding March" type.

Cue 13. An Old Southern song of the "Old Kentucky Home" style.

Cue 14. A slow dance Waltz of the swinging character for the dancing of Shelby's guests.

Cue 15. **LOVE THEME:** A sweet Ballad in the simple style of pathos and love. Play "PP" con sordini, strings only.

Cue 16. A bright "nigger" dance of the Sand Dance style for the distant dancing of the negroes.

Cue 17. A slow dance Waltz similar or the same as played at Cue No. 15.

Cue 18. **LOVE THEME:** A sweet love Ballad as previously enumerated.

Cue 19. **UNCLE TOM THEME:** An old fashioned Southern style selection to follow Uncle Tom on his pilgrimage through the production; one a bit sentimental in character.

Cue 20. A bright Allegro or Allegretto to follow the happy antics of the children and guests.

Continued on Inside Back Cover

Thematic Music

Cue Sheet

M. J. MINTZ (PATENT)
JULY 31, 1922

PART 1

- 1 AT SCREENING Gems of Stephen Foster (Tobani) ½ Min.

And^{te}

Copyr. 1914 C. Fischer.
- 2 (Title) THIS MOTION PICTURE American Fantasie (Herbert) ¾ Min.

And^{te}

Copyr. 1898 Edw. Schuberth Co.
- 3 (Title) GEN. ROBERT E. LEE The Bonnie Blue Flag (Lake) ½ Min.

All^{to}

Copyr. Carl Fischer
- 4 (Title) IN THE YEAR OF OUR LORD—1856..... Tournament (Nevin) 1½ Min.

Polonaise

mf

Copyr. 1913 Boston Music Co.
- 5 (Action) FLASH TO CHILDREN Sabot Dance from "Down South" (Myddleton) 2 Min.

All^o

mf

Copyr. 1920 E. B. Marks.
- 6 (Title) LIZA'S GIT TO BE MARRIED Children's Song (Riesefeld) ¼ Min.

Slow

f
- 7 (Title) MR. AND MRS. SHELBY Jovs of Innocence (Fletcher) ¾ Min.

All^{to}

mp

Copyr. 1926 Hawks + Son.
- 8 (Title) NOTE: Start at letter (A) and finish after repeating letter (B).
LIZA'S GIT TO BE MARRIED Children's Song (Riesefeld) ¼ Min.

Slow

f
- 9 (Title) GEORGE HARRIS Remembrance (Deppen) 1¼ Min.

And^{te}

mf

Copyr. 1918 Sam. Fox.
- 10 (Action) AFTER CLOSE-UP OF HARRIS WEeping... Ole South (Zamecnik) 1 Min.

March time

pp

Copyr. 1919 Sam Fox Pub. Co.

- 11 (Action) SHELBY APPEARS Evening Hour (Hulten) ¾ Min.

Andte

Copyright, 1919 Sun Fox Pub. Co.

- 12 (Action) GEORGE AND SHELBY Coronation March (Eilenberg) 1 Min.

Marcia

Copyright, 1917 Carl Fischer.

- 13 (Title) MOONLIGHT BATHING THE OLD KENTUCKY HOME My Old Kentucky Home from "Plantation Echoes" (Ross) .. ½ Min.

Andte

Copyright, Carl Fischer.

- 14 (Action) ORCHESTRA PLAYING Adoree (Friml) ¾ Min.

Modto

Copyright, 1927 Edwin F. Kalms.

- 15 (Action) CLOSE-UP OF ELIZA AND GEORGE LOVE THEME: Ma Little Sun Flow'r-Good-Night (Vanderpool) ½ Min.

Slow

Copyright, 1919 M. Witmark & Sons.

- 16 (Action) DANCING BEYOND LAKE Southern Rhapsody (Hosmer) ¾ Min.

All: non troppo

Copyright, Carl Fischer.

- 17 (Action) COUPLE DANCING Adoree (Friml) ½ Min.

Modto

Copyright, 1927 Edwin F. Kalms.

- 18 (Action) ELIZA AND GEORGE IN ARBOR LOVE THEME: Ma Little Sun Flow'r-Good-Night (Vanderpool) ½ Min.

Slow

Copyright, 1919 M. Witmark & Sons.

- 19 (Title) UNCLE TOM UNCLE TOM THEME: Southern Idyl (Stoessel) 1 Min.

Andte

Copyright, 1921 The Boston Music Co.

NOTE: Do not play too slow at this sequence.

20 (Action) CHILDREN ARE SEENFrom the Canebrake (Gardner) ¾ Min.

Musical notation for item 20, including treble clef, key signature of one sharp, and tempo marking *All.^o non troppo*. Copyright 1922 G. Schirmer.

21 (Title) EDWARD HARRIS—OWNERRoses for Remembrance (Curtis) ½ Min.

Musical notation for item 21, including treble clef, key signature of two flats, and tempo marking *Mod.^o maestoso*. Copyright 1925 L. B. Curtis.

NOTE: Play first six measures only, and repeat.

22 (Action) ELIZA AND GEORGE IN ARBORLOVE THEME: Ma Little Sun Flow'r-Good-Night (Vanderpool) 1½ Min.

Musical notation for item 22, including treble clef, key signature of two flats, and tempo marking *Slow*. Copyright 1919 M. Witmark + Sons.

Musical notation for item 22, second line of the piece.

Musical notation for item 22, third line of the piece.

23 (Action) HARRIS LOOKS AT LOVERSDramatic Suspense (Vrionides) 2 Min.

Musical notation for item 23, including treble clef, key signature of one flat, and tempo marking *And.^{te} quasi misterioso*. Copyright 1927 Irving Berlin, Inc.

24 (Action) HARRIS LEAVES ON HORSEA Vain Hope (Patou) ½ Min.

Musical notation for item 24, including treble clef, key signature of one flat, and tempo marking *All.^o agitato*. Copyright 1925 Hawkes + Son.

25 (Title) THE YEARS BROUGHTA Simple Love Episode (Haines) 1¼ Min.

Musical notation for item 25, including treble clef, key signature of one sharp, and tempo marking *All.^o*. Copyright 1922 Hawkes + Son.

26 (Title) DURING THE YEARSCrepuscule d'Angoisse (Fosse) 1¼ Min.

Musical notation for item 26, including treble clef, key signature of two flats, and tempo marking *Maestoso*. Copyright J. Yves.

27 (Action) CLOSE-UP OF ELIZA AND CHILDA Shepherd's Tale from "In Arcady" (Nevin)..... 1¾ Min.

Musical notation for item 27, including treble clef, key signature of two flats, and tempo marking *All.^o*. Copyright 1915 Boston Music Co.

28 (Action) ELIZA AND GEORGE EMBRACE.....LOVE THEME: Ma Little Sun Flow'r-Good-Night (Vanderpool) 1¾ Min.

Musical notation for item 28, including treble clef, key signature of two flats, and tempo marking *Slow*. Copyright 1919 M. Witmark + Sons.

Musical notation for item 28, second line of the piece.

Musical notation for item 28, third line of the piece.

29 (Action) LITTLE BOY ENTERS ROOMCake Walk from "Down South" (Myddleton) ¾ Min.

Musical notation for item 29, including treble clef, key signature of one flat, and dynamic marking *ff*. Copyright: 1920 E. B. Marks.

30 (Action) BOY TURNS BACKWARDSHeart Throbs (Herbert) 1¼ Min.

Musical notation for item 30, including treble clef, key signature of one flat, and dynamic marking *mf*. Tempo: *Lento*. Copyright: 1925 Carl Fischer.

31 (Title) AND GEORGE, PROMISEA Song of Supplication (Fletcher) 1¼ Min.
NOTE: Pass first repeat, observe second one; finish on sixth measure after letter (B).

Musical notation for item 31, including treble clef, key signature of one flat, and dynamic marking *mf*. Tempo: *Slowly*. Copyright: 1926 Hawkes + Son.

32 (Title) SHELBY, I'D HATE TO FORECLOSE Karma (Herbert) 2 Min.
NOTE: Cut from letter (B) to letter (C).

Musical notation for item 32, including treble clef, key signature of one flat, and dynamic marking *ff*. Tempo: *Andte maestoso*. Copyright: 1926 C. Fischer.

33 (Title) BUT NO ECHO OF SADNESS From the Canebrake (Gardner) 1 Min.

Musical notation for item 33, including treble clef, key signature of one flat, and dynamic marking *f*. Tempo: *Allte non troppo*. Copyright: 1922 G. Schirmer.

34 (Action) ELIZA ENTERS ROOMMystic Andante (Sibelius) ¾ Min.

Musical notation for item 34, including treble clef, key signature of one flat, and dynamic marking *f*. Tempo: *Andte*. Copyright: 1925 Schlesinger.

35 (Title) AND HE'S SOLD YOU TOO Chant from "Bandanna Sketches" (White) ¾ Min.

Musical notation for item 35, including treble clef, key signature of one flat, and dynamic marking *mf*. Tempo: *Andte religioso*. Copyright: 1920 C. Fischer.

36 (Action) SHELBY'S ROOM Appassionato Dramatico (Berge) ¾ Min.

Musical notation for item 36, including treble clef, key signature of one flat, and dynamic marking *ff*. Tempo: *Con moto appassion*. Copyright: 1925 Robbins Music Corp.

37 (Action) HARRIS ENTERS HARRIS THEME: Wotan (Fietter) ¾ Min.

Musical notation for item 37, including treble clef, key signature of one flat, and dynamic marking *f*. Tempo: *Andte maestoso*.

Musical notation for item 37, including treble clef, key signature of one flat, and dynamic marking *f*. Tempo: *Andte maestoso*.

Musical notation for item 37, including treble clef, key signature of one flat, and dynamic marking *f*. Tempo: *Andte maestoso*. Copyright: Fr. Salabert.

38 (Action) ELIZA IN SNOW Ondes Mysterieuses (Franceschi) 2 Min.

Musical notation for item 38, including treble clef, key signature of one flat, and dynamic marking *f*. Tempo: *Allte modte*. Sonnemann Music Co.

39 (Action) ELIZA ENTERS INN In the Silence of the Night (Rachmaninoff) 1¼ Min.

Musical notation for item 39, including treble clef, key signature of one flat, and dynamic marking *mf*. Tempo: *Lento*. Copyright: 1919 G. Schirmer.

40 (Action) MARKS, THE LAWYER, AT TABLE LAWYER THEME: Piccolo Pic (Slater) 1 Min.

Mod^{te}

Copy. 1918 Carl Fischer.

41 (Action) PURSUERS ENTER HARRIS THEME: Wotan (Fietter) 1/2 Min.

And^{te} maestoso

Copy. Fr. Salaber^t.

42 (Title) I'M A LAWYER LAWYER THEME: Piccolo Pic (Slater) 1 3/4 Min.

Mod^{te}

Copy. 1918 C. Fischer.

43 (Action) LAWYER QUIETLY APPROACHES DOOR... Misterioso Irresoluto (Langey) 3/4 Min.

mod^{te}

Copy. 1918 B. Schirmer.

44 (Action) ELIZA CLIMBS FROM WINDOW Ondes Mysterieuses (Franceschi) 4 1/2 Min.

Furioso

Johannmann Music Co.

NOTE: Play strings tremolo ad lib.
NOTE: Water effect—torrent, etc., ad lib for river scene. Big Timpany crescendo for falls and rescue of Eliza by Phineas until change of scene.

45 (Title) THOUGH IN A FREE STATE Little Bluebird of My Heart (Grey) 1 1/4 Min.

And^{te}

Copy. 1925 Sam Fox Pub. Co.

46 (Action) ELIZA DETECTS LAWYER AT WINDOW... LAWYER THEME: Piccolo Pic (Slater) 3/4 Min.

Mod^{te}

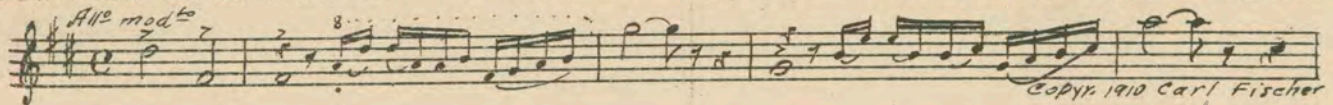
Copy. 1918 Carl Fischer.

47 (Title) UNCLE TOM CAUGHT IN THE Cabin Song (White) 2 Min.

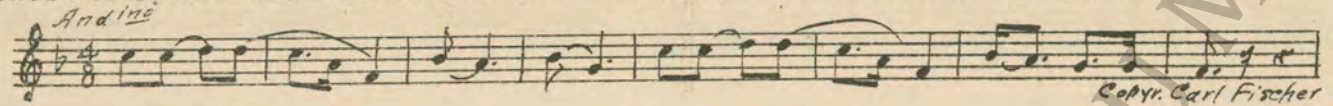
And^{te} patetico
pp. con sordini

Copy. 1922 Carl Fischer.

- 48 (Title) DOWN THE RIVER Dimanche Matin from "Scenes Alsaciennes No. 1" (Massenet). ¾ Min.



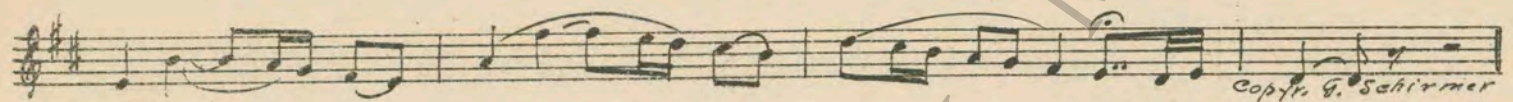
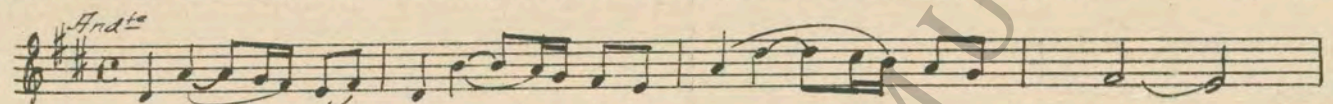
- 49 (Action) CLOSE-UP OF NEGROES IN HOLD SINGING. Slave Song (White) ½ Min.



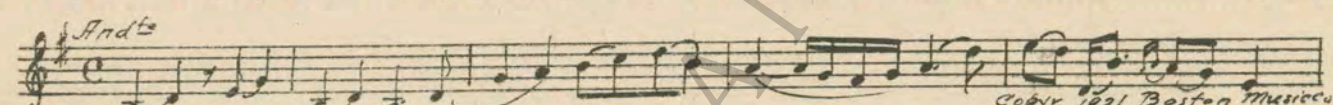
- 50 (Action) FLASH TO PASSENGERS AND ST. CLARE. Enchantresse (Borch) ¾ Min.



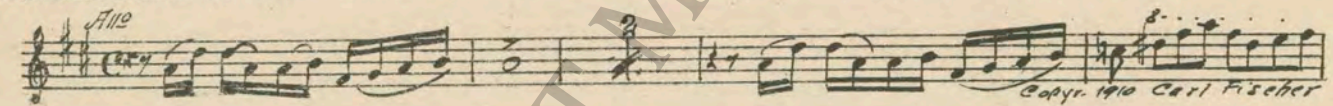
- 51 (Action) CLOSE-UP OF EVA EVA THEME: Rosaura (Burgmein) 1¼ Min.



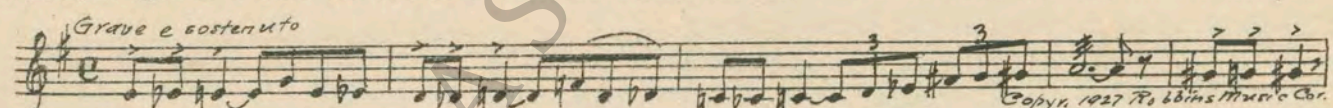
- 52 (Title) I'VE MADE HUNDREDS OF THESE UNCLE TOM THEME: Southern Idyl (Stoessel) ½ Min.



- 53 (Action) BOILER ROOM OF BOAT Dimanche Matin from "Scenes Alsaciennes No. 1" (Massenet). 1¼ Min.



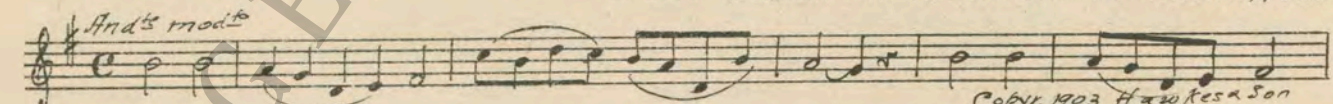
- 54 (Title) WELL, IF IT AIN'T GEORGE HARRIS The Captive (Savino) 1½ Min.



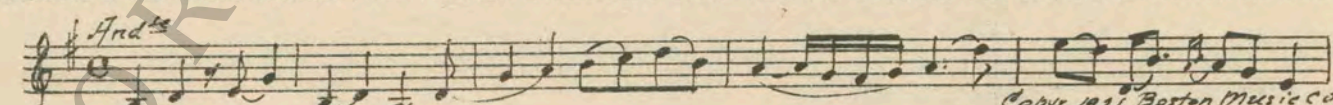
- 55 (Action) GEORGE TRIES TO ESCAPE THROUGH PADDLE BOX Spirit of the Night (Neinass) 1 Min.



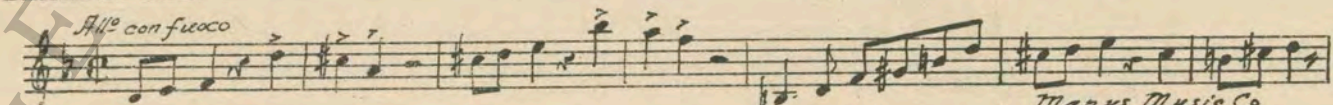
- 56 (Action) SLAVES LAND I Want To See My Dear Old Home Again from "Happy Days In Dixie" (Bidgood) ¾ Min.



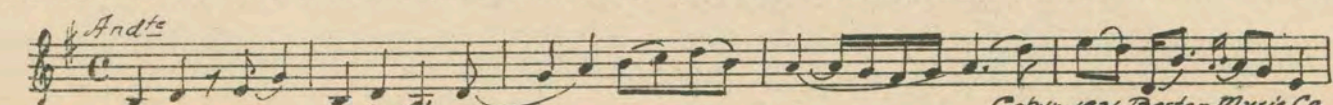
- 57 (Action) UNCLE TOM SEES ELIZA UNCLE TOM THEME: Southern Idyl (Stoessel) ½ Min.



- 58 (Action) BEARDED MAN CRACKS WHIP Rivalite (Snoek) 1¼ Min.



- 59 (Title) DO YOU THINK YOU UNCLE TOM THEME: Southern Idyl (Stoessel) ¾ Min.



60 (Action) LITTLE BOY PLAYING WITH JUMPIN' JACK Don't You Sigh No More (Lake) 1 1/4 Min.

Slowly

Copyright 1922 Belwin Inc.

61 (Action) LAWYER AND TWO MEN ARE SEEN LAWYER THEME: Piccolo Pic (Slater) 4 Min.

Mod^{to}

Copyright 1918 C. Fischer.

62 (Title) I TAKE MY SLAVES OFF A Drowsy Afternoon (Lemont) 1/2 Min.

ben cantando

Copyright 1919 Oliver Ditson

63 (Action) BEARDED MAN LURES CHILD Chiffonnette (Atherton) 1 1/4 Min.

Mod^{to}

Copyright 1905 G. Schirmer.

64 (Title) NOW YOU'RE GOING FOR A NICE LONG WALK Ruy Blas (Mendelssohn) 1/2 Min.

All^o

Copyright Carl Fischer.

65 (Action) FLASH-BACK TO SLEEPING MOTHER Stay In Your Old Back Yard (Udall) 3/4 Min.

Tenderly

Copyright M. Witmark + Sons

66 (Action) ELIZA AWAKENS Feu Vengeur (Ourdine) 1 1/2 Min.

All^o

Copyright 1925 S. Chapelier.

67 (Title) MAMA! MAMA! In A Critical Situation (Bece) 2 Min.

Agitato

Copyright 1926 Schlesinger.

68 (Action) ELIZA FALLS TO KNEES IN ROAD Lamentoso (Drigo) 2 Min.

Mod^{to}

Copyright 1926 Carl Fischer.

69 (Action) CAPITOL DOME-SEEN Glory! Glory! Hallelujah 1 Min.

Mod^{to}
mf

Copyright Carl Fischer.

NOTE: Produce effect of shots.

INTERMISSION

PART 2

70 (Title) THE ST. CLARE HOME IN NEW ORLEANS. EVA THEME: Rosaura (Burgmein) 3/4 Min.

And^{te}
pp

Copyright G. Schirmer.

NOTE: Start at 3rd measure; play 8 measures—cut 4 measures—play 8 and close.

71 (Action) INSERT—PROCLAMATION Glory! Glory! Hallelujah 1/2 Min.

Musical notation for item 71: INSERT—PROCLAMATION. Treble clef, 2/4 time, Mod^{to}, mf. Copyright: Carl Fischer.

72 (Action) TOM TAKES GLASS OF WATER..... Rosaura (Burgmein) 1/2 Min.

Musical notation for item 72: TOM TAKES GLASS OF WATER. Treble clef, 2/4 time, And^{te}, pp. Copyright: G. Schirmer.

NOTE: Start at letter (B)—play 4 measures—cut 8—play 4 and finish.
73 (Action) AUNT CALLING TOPSY A Ticklish Tale (Finck) 1/2 Min.

Musical notation for item 73: AUNT CALLING TOPSY. Treble clef, 2/4 time, Not too fast, mf. Copyright: 1927 Hawkes + Son.

74 (Title) HE I IS Ole Virginny (Zamechnik) 1 1/4 Min.

Musical notation for item 74: HE I IS. Treble clef, 2/4 time, Mod^{to}, mf. Copyright: Sam Fox.

75 (Action) CLOSE-UP OF TOPSY TOPSY THEME: Lady Of My Heart (Roder) 1 Min.

Musical notation for item 75: CLOSE-UP OF TOPSY. Treble clef, 2/4 time, Mod^{to}, p. Copyright: 1927 Edwin F. Kalnus.

76 (Action) AUNT CALLING TOPSEE! TOPSEE! Aunt Call (Manuscript) 1/4 Min.

Musical notation for item 76: AUNT CALLING TOPSEE! TOPSEE!. Treble clef, 2/4 time, Burlesque. Copyright: Manuscript.

77 (Title) I THINK MISS FEELY WANTS ME Scherzoso (Friml) 3 Min.

Musical notation for item 77: I THINK MISS FEELY WANTS ME. Treble clef, 2/4 time, 8va. Copyright: 1927 Edwin F. Kalnus.

78 (Title) WHAT AM I GOING TO DO TOPSY THEME: Lady of My Heart (Roder) 2 1/4 Min.

Musical notation for item 78: WHAT AM I GOING TO DO. Treble clef, 2/4 time, Mod^{to}. Copyright: 1927 Edwin F. Kalnus.

NOTE: Start at figure (3).
79 (Action) TWO CHILDREN ALONE EVA THEME: Rosaura (Burgmein) 1 3/4 Min.

Musical notation for item 79: TWO CHILDREN ALONE. Treble clef, 2/4 time, And^{te sostenuto}. Copyright: G. Schirmer.

80 (Title) NOBODY LOVES NIGGERS The Florida Spiritual (Foulds) 2 Min.

Musical notation for item 80: NOBODY LOVES NIGGERS. Treble clef, 2/4 time, Slow, mf. Copyright: 1925 E. B. Marks.

81 (Action) TOPSY ALONE AT MIRROR WITH POWDER PUFFTOPSY THEME: Lady of My Heart (Roder)¾ Min.

Grazioso
Musical notation for item 81, consisting of three staves of music in 2/4 time.

Copyr. 1927 Edwin F. Kalmus

82 (Action) AUNT ENTERS ROOMA Southern Idyl (Baxter)1 Min.

Allo modo
Musical notation for item 82, consisting of one staff of music in 2/4 time.

Copyr. 1895 John Church Co

83 (Title) BUT THE LIGHT THAT TOUCHEDIt Is Night (Black)1¼ Min.

Andte
Musical notation for item 83, consisting of one staff of music in 3/4 time.

Copyr. 1924 G. Schirmer

NOTE: Play "PP" con sordini strings only, very ethereal.
84 (Action) FATHER ALONE AT BEDSIDELamento from Pique Dame (Tschaiakowsky)¾ Min.

Andte
Musical notation for item 84, consisting of one staff of music in 4/4 time.

Copyr. 1926 Manus Music Co

85 (Title) AUGUSTINE ST. CLAREThe Captive (Savino)2½ Min.

Grave e sostenuto
Musical notation for item 85, consisting of one staff of music in 3/4 time.

Copyr. 1927 Robbins Music Corp

86 (Title) SOLD TO LEGREETragico con Moto (Drigo's Cinema Classics)½ Min.

Molto
Musical notation for item 86, consisting of one staff of music in 2/4 time.

Copyr. 1926 Carl Fischer

87 (Title) ACROSS TWO STATESSorter Miss You (Smith)½ Min.

Broadly with expression
Musical notation for item 87, consisting of one staff of music in 2/4 time.

Copyr. 1916 M. Witmark & Sons

88 (Title) SIMON LEGREE'S PLANTATIONIncid. Symphony No. 24 (Kempinski)1 Min.

Andte molto
Musical notation for item 88, consisting of one staff of music in 3/4 time.

Copyr. 1924 Photo Play Mus. Co

89 (Title) CASSIE FOR TWENTY YEARSEpilogue (Gabriel Marie)¾ Min.

Andte
Musical notation for item 89, consisting of one staff of music in 3/4 time.

Copyr. Manus Music Co

NOTE: Play from letter (B) to (C) only.
90 (Action) LEGREE LEAVES ELIZAAllegro Precipitoso (Savino)1¼ Min

Allo
Musical notation for item 90, consisting of one staff of music in 2/4 time.

Copyr. 1933 G. Schirmer

91 (Title) WHAT DO YOU MEANIntermezzo from "Sigurd Jorsalfar" (Grieg)¾ Min

Poco Andte
Musical notation for item 91, consisting of one staff of music in 3/4 time.

Copyr. 1913 Carl Fischer

92 (Action) SCENE IN FRONT OF DOORDramatic Allegro (Savino)1½ Min

93 (Title) AND THE TRAMP, TRAMP, TRAMPTramp, Tramp, Tramp½ Min.

94 (Title) TERROR SPREADRomantique (Gabriel Marie)1 Min

95 (Action) FLASH TO MARCHING TROOPSAround the Campfire (Seredy)1¼ Min

96 (Title) WHILE LEGREESilent Night (Rebikov)½ Min.
NOTE: Finish on 8th measure after figure (6).

97 (Action) CASSIE ADMINISTERING TO UNCLE TOM..UNCLE TOM THEME: Southern Idyl (Stoessel)½ Min.

98 (Title) WHY MISSY, THAT WAS ELIZA'S STORY..Chanson Melancholique (Collinge)¾ Min.
NOTE: Play "PP" con sordini strings only.

99 (Action) CASSIE LEAVES TOMDramatic Conflict (Levy)2 Min.

100 (Title) GOOD LORD ALMIGHTYAppassionato No. 3 (Axt)1¼ Min.

101 (Title) MOTHER! MOTHER!'Bama Coon (Lachau)½ Min.

102 (Action) FLASH-BACK TO LEGREEDramatic Conflict (Levy)2 Min.
NOTE: Play "PP" con sordini strings only, very plaintive.

103 (Action) LEGREE OUTSIDEThe Conspirators (Roder) ½ Min.

Agitato misterioso

Copyr. 1927 Ed. F. Kalmus

104 (Action) SOLDIERS ARE SEENAround the Campfire (Seredy) ½ Min.

All^o mod^o

Copyr. 1918 Carl Fischer

105 (Action) FLASH-BACK TO LEGREELe Seigneur de Kermor (Gabriel Marie) ½ Min.

And^{te} maestoso

Mannus Music Co

106 (Action) WINDOWS SLAM SHUT BY WINDThe Skeleton (Roder) 1 Min.

Not too slow

Copyr. 1927 Edwin F. Kalmus

107 (Action) UNCLE TOM BROUGHT INLe Volcan (Offenbach) 1 ¼ Min.

All^o

Copyr. 1926 Ed. B. Marks Mus. Co

108 (Action) FLOGGING OF TOMThe Toilers (Axt) ½ Min.

Mod^o

Copyr. 1926 Robbins Music Co

109 (Action) MARCHING SOLDIERSWe Are Coming, Father Abraham (Seredy) ¼ Min

Mod^o

Copyr. 1918 Carl Fischer

110 (Title) HE'S DONE FORUNCLE TOM THEME: Southern Idyl (Stoessel) ½ Min.

And^{te}

Copyr. 1921 Boston Music Co

111 (Action) UNCLE TOM IS CARRIED OUTLargo from New World's Symphony (Dvorak) ¼ Min.

Largo

Copyr. 1912 Carl Fischer

NOTE: Play half tone lower; start on 5th measure after letter (A)—play 4 measures only—finish with Timpany Roll.

112 (Title) I FORGIVE YOUOld Black Joe (Foster) ½ Min.

Espressivo

Copyr. Carl Fischer

113 (Action) FLASH-BACK TO LEGREESecret Court (Leuschner) 2 Min.

Mod^o

Copyr. 1925 Albert Schaper

NOTE: Soft Timpany or Cymbal Roll for revolving wheel.

114 (Action) DOOR SLAMS Eruption (Dubensky) 2 1/2 Min.

All^o

Copyright 1927 G. & F. Lipskin

115 (Title) WELL, IF IT AIN'T Andante Tragico (Levenson) 1/2 Min.

And^{te}

Copyright 1926 Belwin Inc.

116 (Action) LEGREE PLACES DOOR BACK IN PLACE—TROOPS MARCHING PAST Around the Campfire (Seredy) 3/4 Min.

All^o mod^{to}

Copyright 1918 Carl Fischer

117 (Action) CASSIE FIGHTING LEGREE Mob-Rule (Bece) 2 Min.

Agitato

Copyright 1926 Schlesinger

118 (Action) SOLDIERS STOP MARCHING Agitato No. 4 (Axt) 1/2 Min.

All^o

Copyright 1925 Robbins Music Co.

119 (Action) CLOSE-UP OF LEGREE Banquet Ghost (Leuschner) 3/4 Min.

Copyright 1925 Albert Schaper

120 (Action) OFFICER ORDERS ELIZA TO DESCEND....Icare (Tremisot) 1/2 Min.

Mod^o maestoso

Manus Music Co

121 (Action) ELIZA RECOGNIZES CHILD Mammy's Little Kinky Headed Boy (Trinkaus) 1/2 Min.

Tendresse

Copyright 1926 M. Witmark & Sons

122 (Action) GEORGE SEES AND RECOGNIZES ELIZA...LOVE THEME: Ma Little Sun-Flow'r, Good-Night (Vanderpool) 1/2 Min.

Slow

Copyright 1919 Witmark & Sons

123 (Action) VISION OF MARCHING SOLDIERS Memories of the War (Laurendeau) 3/4 Min.

March

Copyright 1907 Carl Fischer

THE END

Complete orchestrations and single piano parts of each separate number contained herein, can be purchased from CAMEO MUSIC SERVICE CORPORATION, 315-317 WEST 47TH STREET, NEW YORK CITY.

- Cue 21. A dramatic Prelude to follow and bring on the hard planter, Edward Harris.
- Cue 22. **LOVE THEME:** A sweet love Ballad as previously enumerated.
- Cue 23. A number embodying the elements of drama and suspense to show the cruel heart of the master, Edward Harris.
- Cue 24. An Appassionato of despair and pathos to follow the despair of the separation of the lovers, Eliza and George. Play the first eight measures and segue.
- Cue 25. A light Allegretto of the sustained type.
- Cue 26. An ominous Maestoso of a sinister character.
- Cue 27. A simple Allegretto of a neutral style to establish the scene of love between Eliza and her little boy.
- Cue 28. **LOVE THEME:** A sweet love Ballad as previously enumerated.
- Cue 29. A happy bright Allegretto of the distinct Southern character to follow the antics of the little boy.
- Cue 30. A sweet Lento movement in the minor key to show the despair and heartache of this sequence.
- Cue 31. A Lento or Tristesse to show the despair of Eliza upon learning of George's decision to endeavor to escape.
- Cue 32. A cruel, hard Maestoso of the foreboding or sinister character to accentuate the heartlessness of the slave owner.
- Cue 33. A bright happy Southern tune to show the contentment and happy home life of Uncle Tom.
- Cue 34. A sinister Prelude of foreboding disaster or evil purpose to follow the actions of Eliza in her anxiety to escape.
- Cue 35. A Negro Spiritual to show the despair and heartache of Uncle Tom when he learns of his fate. Play "PP" con sordini, strings only, very plaintive in a crooning manner.
- Cue 36. An Appassionato to denote dramatic fervor and the despair of Shelby in being forced to part with Uncle Tom.
- Cue 37. **HARRIS THEME:** A cruel, marked Maestoso to show the inhuman character of Harris, and his hatred for the slaves.
- Cue 38. An emotional Agitato or Furioso to follow the flight of Eliza across the snow and her escape.
- Cue 39. An ominous Lento to show the distress of Eliza and her anxiety to get away from her pursuers.
- Cue 40. **LAWYER THEME:** An eccentric selection to follow the peculiar actions of Marks the Lawyer, in his unscrupulous methods to obtain money.
- Cue 41. **HARRIS THEME:** A marked Maestoso to show the heartless character of the slave owner.
- Cue 42. **LAWYER THEME:** An eccentric selection as previously enumerated.
- Cue 43. An ominous Misterioso of the creepy style to follow the actions of Marks as he quietly creeps toward the door, behind which Eliza and her child are concealed.
- Cue 44. A Furioso or Agitato to follow the frantic efforts of Eliza in her efforts to escape across the ice covered river while pursued by the bloodhounds. Produce effect of torrent by Timpany Roll ad lib; crescendo to "FFF" as she is clutched from the jaws of death by Phineas.
- Cue 45. A sweet simple Andante to establish the atmosphere of contentment prevailing in Phineas' home.
- Cue 46. **LAWYER THEME:** An eccentric selection as previously enumerated.
- Cue 47. An old Negro selection of the spiritual order to show the reconciliation of the negroes to their apparent fate.
- Cue 48. A suppressed Allegro Moderato.
- Cue 49. An old style Negro spiritual crooning song for the singing slaves on the river boat.
- Cue 50. A light Allegretto of the neutral type for the St. Clare family sequence.
- Cue 51. **EVA THEME:** A sweet romantic Andante of the simple style to accompany this beautiful character throughout the production.
- Cue 52. **UNCLE TOM THEME:** Play as previously enumerated.
- Cue 53. A repetition of a selection similar to the one played at Cue No. 48.
- Cue 54. A Grave Sostenuto selection of a sinister character to show the sinister character of the slave owner, and the despair of George at being discovered.
- Cue 55. A weird sinister selection of fear and anxiety to follow George in his endeavor to escape.
- Cue 56. An old Southern melody of the quaint type to show the hopeless position of the slaves.
- Cue 57. **UNCLE TOM THEME:** Play as previously enumerated, but with muted strings only, very plaintive.
- Cue 58. A harsh sinister brutal selection to show the cruel heart of the slave driver. Produce effect of cracking whip ad lib.
- Cue 59. **UNCLE TOM THEME:** Play as previously enumerated.
- Cue 60. A Southern love song of the neutral style to follow the rest period of Eliza and the restless movements of the child.
- Cue 61. **LAWYER THEME:** An eccentric selection as previously enumerated.
- Cue 62. A Lullaby or Berceuse for the repetition of scene between Eliza and child.
- Cue 63. A light "chic" Novelette played with a great deal of hesitation to follow the actions of child as he is lured by stick of candy from his sleeping mother.
- Cue 64. A frantic Agitato of the sinister type to show the anxiety of the men to get away with the child.
- Cue 65. A Lullaby or Berceuse to show the sleeping Eliza and her anxiety over her child. Play "PP" con sordini, strings only.
- Cue 66. A tragic Animato to follow Eliza's frantic realization that her child is missing.
- Cue 67. A dramatic Agitato or Furioso to follow Eliza in her frantic efforts to recover her stolen child.
- Cue 68. A pathetic Andante or Lamentoso to show the despair and grief of Eliza.
- Cue 69. A patriotic melody of the Civil War period; start slowly and gradually build up—produce cannon shots as Fort Sumpter is fired upon.

Continued on Back Cover

PART 2

- Cue 70. **EVA THEME:** A sweet plaintive Andante of the appealing type.
- Cue 71. A patriotic melody of the Civil War period to accompany the insert of the proclamation.
- Cue 72. **EVA THEME:** Play the same theme, or one similar as previously enumerated.
- Cue 73. A light frolicking Intermezzo or old fashioned One-Step to show the mischievous character of Topsy.
- Cue 74. An old fashioned Southern One-Step to follow the antics of the little colored girl, Topsy.
- Cue 75. **TOPSY THEME:** A graceful Allegretto of the Intermezzo type to follow the antics of Topsy.
- Cue 76. At this point a bit of humor may be injected into this scene by having the Clarinet play the call written for the Aunt in a burlesque comic manner.
- Cue 77. A fast Scherzo or Allegro Vivo for the quick actions of Topsy.
- Cue 78. **TOPSY THEME:** Play as previously enumerated.
- Cue 79. **EVA THEME:** Play very sweetly, con sordini, strings only.
- Cue 80. A Southern spiritual to show the simplicity of the colored child.
- Cue 81. **TOPSY THEME:** A bright happy Allegretto or Intermezzo.
- Cue 82. A light Southern Idyl or Characteristic.
- Cue 83. An Andante Tranquillo of the celestial type to cover the death bed scene of little Eva. Play "PP" con sordini, strings only.
- Cue 84. A Lamento to show the heart-ache of the father as he quietly looks upon the features of his departed child. Play "PP" con sordini, strings only.
- Cue 85. A cruel, harsh Grave Sostenuto to show the heartless spirit of the cruel slave owners.
- Cue 86. A Tragic Andante embodying the elements of harshness and cruelty. This may be used for a **LEGREE THEME** if you so desire.
- Cue 87. An expressive Andante movement to show the heart-ache of the situation.
- Cue 88. A Tragic Andante or dramatic Sinister Con Moto to follow the Legree sequence. You may, at your discretion, repeat No. 86.
- Cue 89. A plaintive wail to show the depression of Cassie.
- Cue 90. A dramatic Allegro or minor Agitato.
- Cue 91. A cruel atmospheric selection to bring out the brutality of Legree.
- Cue 92. A dramatic Allegro of the pulsating sort to show the activity and drama of this sequence.
- Cue 93. A patriotic March song of the Civil War days as the Union Troops go marching by.
- Cue 94. An Agitato to depict the excitement of the Negroes at the appearance of the Union Troops, and their anxiety to escape their bondage.
- Cue 95. A patriotic March song of the Civil War period as the Union Troops are again seen marching by.
- Cue 96. A sinister ominous selection to show the gruesome atmosphere prevailing throughout this sequence.
- Cue 97. **UNCLE TOM THEME:** Play "PP" con sordini, strings only—very plaintive.
- Cue 98. A melancholy Andante to show Cassie's distress at the discovery that Eliza is her own child.
- Cue 99. A characteristic Dramatic Allegro to follow Cassie as she wildly enters room and wields the lash over Eliza, driving her from the room.
- Cue 100. An Appassionato to follow the great mental agitation of Cassie as she informs Eliza who she is.
- Cue 101. A plaintive Andante Expressivo or old Southern "mammy" song as Cassie embraces Eliza.
- Cue 102. A characteristic Dramatic Allegro similar to the one played at Cue No. 99.
- Cue 103. An agitated Misterioso to follow Legree as he seeks information from Tom.
- Cue 104. A patriotic March song similar to those previously played for the marching Union Troops.
- Cue 105. A brutal Maestoso to follow the actions of Legree.
- Cue 106. A sinister Misterioso or Ghost Music to show the superstition of the Negroes and the uncertainty of Legree. Catch slamming of window blinds—muted brass throughout.
- Cue 107. A cruel pulsating Allegro to show the brutality of Legree.
- Cue 108. A cruel sinister Marcato to follow the strokes of the lash as Tom is flogged.
- Cue 109. A patriotic March song similar to those previously played for the marching Union Troops.
- Cue 110. **UNCLE TOM THEME:** Play "PP" con sordini, strings only—very plaintive.
- Cue 111. A Largo movement of the crooning style—the one mentioned is most effective; play "PP."
- Cue 112. An old Southern song of the "Old Black Joe" style.
- Cue 113. An Allegro Agitato to show the fear, terror and frantic movements of Legree. Imitate the revolving wheel with soft Timpany or Cymbal Roll.
- Cue 114. A Dramatic Agitato or Furioso to show the fury of the crazy Legree and the terror of the two women. Produce effect of crashing door, weird wind effects, etc., ad lib.
- Cue 115. A Tragic Andante to follow the declaration of Legree as he sees women.
- Cue 116. A patriotic March song similar to those previously played for the marching Union Troops.
- Cue 117. An Agitato to accompany the struggle between Legree and the two women in the garret. S. D. taps for short flash of troops while struggle progresses.
- Cue 118. An Agitato or light Furioso.
- Cue 119. A dramatic Maestoso of the weird hallucination type; catch fall of Legree from balcony window.
- Cue 120. A Moderato Maestoso of dignity as Cassie and Eliza descend from balcony.
- Cue 121. A Southern crooning Lullaby to accompany the actions of Eliza and her child.
- Cue 122. **LOVE THEME:** A sweet love Ballad as previously enumerated.
- Cue 123. A patriotic March song similar to those previously played for the marching troops.

THE END.