



M. J. MINTZ (PATENT)
JULY 31, 1923

PART 1

1 AT SCREENING *Intro* Gems of Stephen Foster (Tobani) 1/2 Min.

Musical notation for item 1: Treble clef, key signature of one sharp (F#), common time signature (C). The melody begins with a half note G4, followed by quarter notes A4, B4, C5, B4, A4, G4. The piece concludes with a half note G4. Copyright notice: Copyright 1914 C. Fischer.

2 (Title) THIS MOTION PICTURE American Fantasie (Herbert) 3/4 Min.

Musical notation for item 2: Treble clef, key signature of one sharp (F#), common time signature (C). The melody starts with a half note G4, followed by quarter notes A4, B4, C5, B4, A4, G4. Copyright notice: Copyright 1898 Edw. Schuberth Co.

3 (Title) GEN. ROBERT E. LEE The Bonnie Blue Flag (Lake) 1/2 Min.

Musical notation for item 3: Treble clef, key signature of one sharp (F#), 6/8 time signature. The melody consists of eighth notes: G4, A4, B4, C5, B4, A4, G4. Copyright notice: Copyright Carl Fischer.

4 (Title) IN THE YEAR OF OUR LORD—1856 Tournament (Nevin) 1 1/2 Min.

Musical notation for item 4: Treble clef, key signature of one sharp (F#), 3/4 time signature. The melody begins with a half note G4, followed by quarter notes A4, B4, C5, B4, A4, G4. Copyright notice: Copyright 1913 Boston Music Co.

5 (Action) FLASH TO CHILDREN Sabot Dance from "Down South" (Myddleton) 2 Min.

Musical notation for item 5: Treble clef, key signature of one sharp (F#), 2/4 time signature. The melody features eighth notes: G4, A4, B4, C5, B4, A4, G4. Copyright notice: Copyright 1920 E. B. Marks.

6 (Title) LIZA'S GIT TO BE MARRIED Children's Song (Riesenfeld) 1/4 Min.

Musical notation for item 6: Treble clef, key signature of one sharp (F#), 2/4 time signature. The melody consists of quarter notes: G4, A4, B4, C5, B4, A4, G4. Copyright notice: Copyright 1926 Hawks & Son.

7 (Title) MR. AND MRS. SHELBY Joys of Innocence (Fletcher) 3/4 Min.

Musical notation for item 7: Treble clef, key signature of one sharp (F#), 6/8 time signature. The melody consists of eighth notes: G4, A4, B4, C5, B4, A4, G4. Copyright notice: Copyright 1926 Hawks & Son.

NOTE: Start at letter (A) and finish after repeating letter (B).

8 (Title) LIZA'S GIT TO BE MARRIED Children's Song (Riesenfeld) 1/4 Min.

Musical notation for item 8: Treble clef, key signature of one sharp (F#), 2/4 time signature. The melody consists of quarter notes: G4, A4, B4, C5, B4, A4, G4. Handwritten notes: *George - Remi* and *Harris - ale*.

GEOGRAPHICAL MUSEUM

11 (Action) SHELBY APPEARS Evening Hour (Hulten) 3/4 Min.

Musical notation for item 11, starting with *Andte*. Copyright 1919 Sam Fox Pub. Co.

NOTE: Play first strain only.
12 (Action) GEORGE AND SHELBY Coronation March (Eilenberg) 1 Min.

Musical notation for item 12, starting with *Marcia*. Copyright 1917 Carl Fischer.

NOTE: Play softly and legato—repeat the 16 measures after the first ending.
13 (Titl.) MOONLIGHT BATHING THE OLD KENTUCKY HOME My Old Kentucky Home from "Plantation Echoes" (Ross) .. 1/2 Min.

Musical notation for item 13, starting with *Andte*. Copyright Carl Fischer.

14 (Action) ORCHESTRA PLAYING Adoree (Friml) 3/4 Min.

Musical notation for item 14, starting with *Moderato* and handwritten note "over the waves". Copyright 1927 Edwin F. Kalmus.

15 (Action) CLOSE-UP OF ELIZA AND GEORGE LOVE THEME: Ma Little Sun Flow'r-Good-Night (Vanderpool) 1/2 Min.

Musical notation for item 15, starting with *Slow*.

Two staves of musical notation for item 15, continuing the melody.

16 (Action) DANCING BEYOND LAKE Southern Rhapsody (Hosmer) 3/4 Min.

Musical notation for item 16, starting with *All: non troppo*. Copyright Carl Fischer.

NOTE: Start at letter (Q) and finish on 7th measure after (S)—playing B natural instead of B flat.
17 (Action) COUPLE DANCING Adoree (Friml) 1/2 Min.

Musical notation for item 17, starting with *Moderato*. Copyright 1927 Edwin F. Kalmus.

18 (Action) ELIZA AND GEORGE IN ARBOR LOVE THEME: Ma Little Sun Flow'r-Good-Night (Vanderpool) 1/2 Min.

Musical notation for item 18, starting with *Slow*.

Two staves of musical notation for item 18, continuing the melody. Copyright 1919 M. Witmark + Sons.

GEOGRAPHY

20 (Action) CHILDREN ARE SEEN From the Canebrake (Gardner) ¾ Min.

Musical notation for item 20, including tempo marking *All.^o non troppo* and copyright notice *Copyr. 1922 G. Schirmer.*

21 (Title) EDWARD HARRIS—OWNER Roses for Remembrance (Curtis) ½ Min.

Musical notation for item 21, including tempo marking *Molto maestoso* and copyright notice *Copyr. 1926 Z. B. Curtis.*

22 (Action) ELIZA AND GEORGE IN ARBOR LOVE THEME: Ma Little Sun Flow'r-Good-Night (Vanderpool) 1½ Min.

Musical notation for item 22, including tempo marking *Slow* and copyright notice *Copyr. 1919 M. Witmark & Sons.*

23 (Action) HARRIS LOOKS AT LOVERS Dramatic Suspense (Vrionides) 2 Min.

Musical notation for item 23, including tempo marking *And.^{te} quasi misterioso* and copyright notice *Copyr. 1927 Irving Berlin, Inc.*

24 (Action) HARRIS LEAVES ON HORSE A Vain Hope (Patou) ½ Min.

Musical notation for item 24, including tempo marking *All.^o agitato* and copyright notice *Copyr. 1925 Hawkes & Son.*

25 (Title) THE YEARS BROUGHT A Simple Love Episode (Haines) 1¼ Min.

Musical notation for item 25, including tempo marking *All.^o* and copyright notice *Copyr. 1922 Hawkes & Son.*

26 (Title) DURING THE YEARS Crepuscule d'Angoisse (Fosse) 1¼ Min.

Musical notation for item 26, including tempo marking *Maestoso* and copyright notice *Copyr. J. Yves.*

27 (Action) CLOSE-UP OF ELIZA AND CHILD A Shepherd's Tale from "In Arcady" (Nevin) 1¼ Min.

Musical notation for item 27, including tempo marking *All.^o* and copyright notice *Copyr. 1915 Boston Music Co.*

28 (Action) ELIZA AND GEORGE EMBRACE LOVE THEME: Ma Little Sun Flow'r-Good-Night (Vanderpool) 1¼ Min.

Musical notation for item 28, including tempo marking *Slow* and copyright notice *Copyr. 1919 M. Witmark & Sons.*

29 (Action) LITTLE BOY ENTERS ROOM Cake Walk from "Down South" (Myddleton) 3/4 Min.

Musical notation for item 29, including treble clef, key signature, and notes. Copyright: 1920 E. B. Marks.

30 (Action) BOY TURNS BACKWARDS Heart Throbs (Herbert) 1 1/4 Min.

Musical notation for item 30, including tempo marking 'Lento' and dynamics 'mf'. Copyright: 1925 Carl Fischer.

31 (Title) AND GEORGE, PROMISE A Song of Supplication (Fletcher) 1 1/4 Min.
NOTE: Pass first repeat, observe second one; finish on sixth measure after letter (B).

Musical notation for item 31, including tempo marking 'Slowly'. Copyright: 1926 Hawkes + Son.

32 (Title) SHELBY, I'D HATE TO FORECLOSE Karma (Herbert) 2 Min.
NOTE: Cut from letter (B) to letter (C).

Musical notation for item 32, including tempo marking 'Andte maestoso' and dynamics 'ff'. Copyright: 1926 C. Fischer.

33 (Title) BUT NO ECHO OF SADNESS From the Canebrake (Gardner) 1 Min.

Musical notation for item 33, including tempo marking 'All's non troppo'. Copyright: 1922 G. Schirmer.

34 (Action) ELIZA ENTERS ROOM Mystic Andante (Sibelius) 3/4 Min.

Musical notation for item 34, including tempo marking 'Andte'. Copyright: 1925 Schlesinger.

35 (Title) AND HE'S SOLD YOU TOO Chant from "Bandanna Sketches" (White) 3/4 Min.

Musical notation for item 35, including tempo marking 'Andte religioso' and dynamics 'mf'. Copyright: 1920 E. Fischer.

36 (Action) SHELBY'S ROOM Appassionato Dramatico (Berge) 3/4 Min.

Musical notation for item 36, including tempo marking 'Con moto appassionato'. Copyright: 1925 Robbins Music Corp.

37 (Action) HARRIS ENTERS HARRIS THEME: Wotan (Fietter) 3/4 Min.

Musical notation for item 37, including tempo marking 'Andte maestoso'. Copyright: Fr. Salabert.

Musical notation for item 37, second line of notes.

Musical notation for item 37, third line of notes with triplets and dynamics.

38 (Action) ELIZA IN SNOW Ondes Mysterieuses (Franceschi) 2 Min.

Musical notation for item 38, including tempo marking 'All's modte'. Copyright: Sonnemann Music Co.

39 (Action) ELIZA ENTERS INN In the Silence of the Night (Rachmaninoff) 1 1/4 Min.

Musical notation for item 39, including tempo marking 'Lento' and dynamics 'mf'. Copyright: 1919 G. Schirmer.

40 (Action) MARKS, THE LAWYER, AT TABLE LAWYER THEME: Piccolo Pic (Slater) 1 Min.

Mod^{to}

Copyright 1918 Carl Fischer.

41 (Action) PURSUERS ENTER HARRIS THEME: Wotan (Fietter) 1/2 Min.

And^{te} maestoso

Copyright Fr. Salaber.

42 (Title) I'M A LAWYER LAWYER THEME: Piccolo Pic (Slater) 1 3/4 Min.

Mod^{to}

Copyright 1918 C. Fischer.

43 (Action) LAWYER QUIETLY APPROACHES DOOR... Misterioso Irresoluto (Langey) 3/4 Min.

Mod^{te}

Copyright 1918 B. Schirmer.

44 (Action) ELIZA CLIMBS FROM WINDOW Ondes Mysterieuses (Franceschi) 4 1/2 Min.

Furioso

Sonnemann Music Co.

NOTE: Play strings tremolo ad lib. of Eliza by Phineas until change of scene. Big Timpany crescendo for falls and rescue

45 (Title) THOUGH IN A FREE STATE Little Bluebird of My Heart (Grey) 1 1/4 Min.

And^{te}

Copyright 1925 Sam Fox Pub. Co.

46 (Action) ELIZA DETECTS LAWYER AT WINDOW... LAWYER THEME: Piccolo Pic (Slater) 3/4 Min.

Mod^{to}

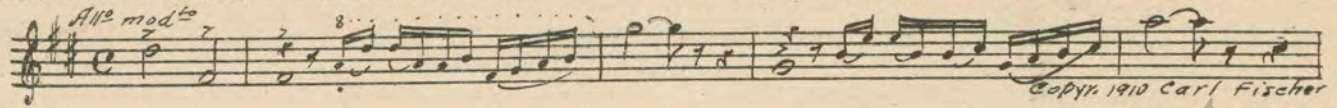
Copyright 1918 Carl Fischer.

47 (Title) UNCLE TOM CAUGHT IN THE Cabin Song (White) 2 Min.

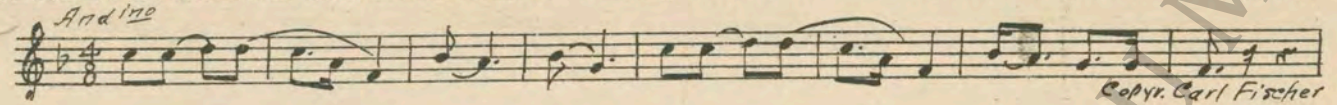
And^{te} patetico
pp. con sordini

Copyright 1922 Carl Fischer.

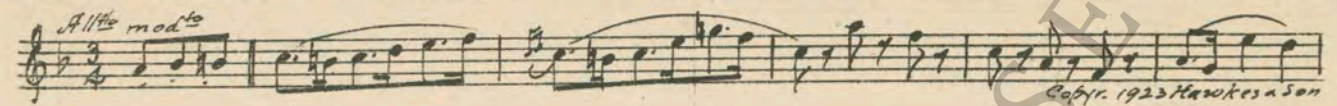
48 (Title) DOWN THE RIVER Dimanche Matin from "Scenes Alsaciennes No. 1" (Massenet). 3/4 Min.



49 (Action) CLOSE-UP OF NEGROES IN HOLD SINGING. Slave Song (White) 1/2 Min.
NOTE: Start five measures after letter (A).

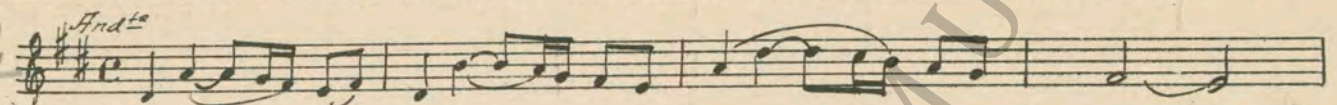


50 (Action) FLASH TO PASSENGERS AND ST. CLARE.. Enchantresse (Borch) 3/4 Min.

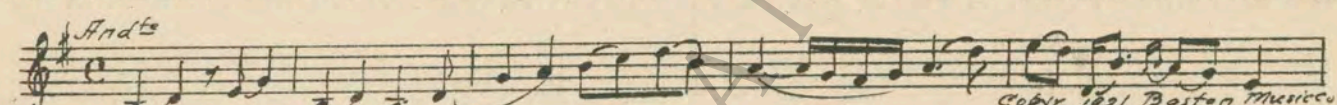


51 (Action) CLOSE-UP OF EVA EVA THEME: Rosaura (Burgmein) 1 1/4 Min.

Trees? Down?



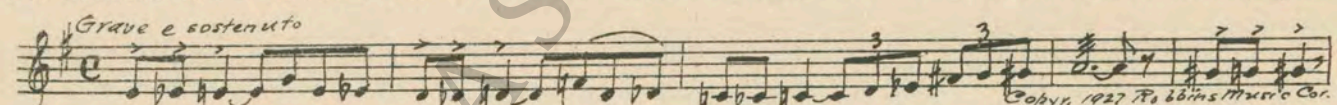
52 (Title) I'VE MADE HUNDREDS OF THESEUNCLE TOM THEME: Southern Idyl (Stoessel) 1/2 Min.



53 (Action) BOILER ROOM OF BOAT Dimanche Matin from "Scenes Alsaciennes No. 1" (Massenet). 1 3/4 Min.



54 (Title) WELL, IF IT AIN'T GEORGE HARRISThe Captive (Savino) 1 1/2 Min.
NOTE: Start at letter (B)—cut from (E) to (G)—finish on fifth measure after (I).

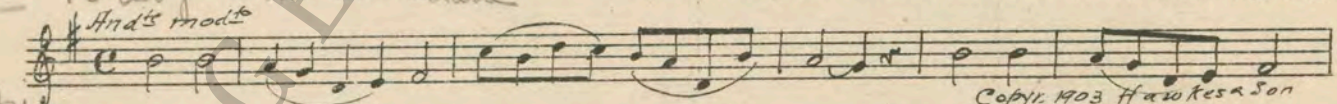


55 (Action) GEORGE TRIES TO ESCAPE THROUGH PADDLE BOX Spirit of the Night (Neinass) 1 Min.

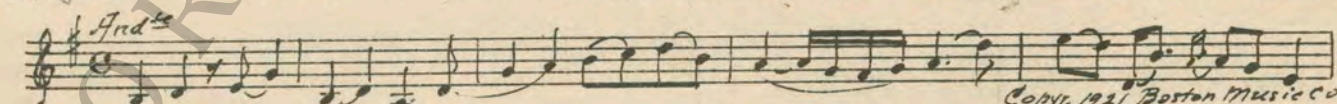


56 (Action) SLAVES LAND I Want To See My Dear Old Home Again from "Happy Days In Dixie" (Bidgood) 3/4 Min.

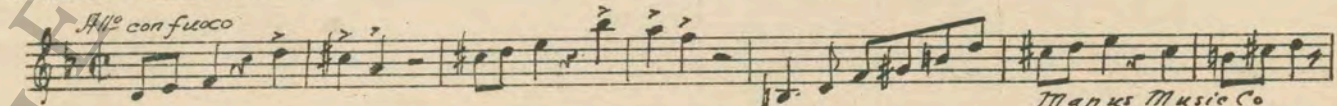
Carry me back to all my



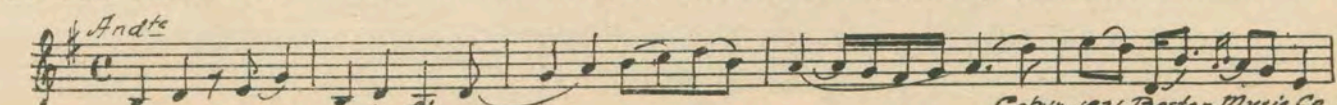
57. (Action) UNCLE TOM SEES ELIZAUNCLE TOM THEME: Southern Idyl (Stoessel) 1/2 Min.



58 (Action) BEARDED MAN CRACKS WHIP Rivalite (Snoek) 1 1/4 Min.



59 (Title) DO YOU THINK YOUUNCLE TOM THEME: Southern Idyl (Stoessel) 3/4 Min.



60 (Action) LITTLE BOY PLAYING WITH JUMPIN'-
 JACK Don't You Sigh No More (Lake) 1 1/4 Min.

Slowly

Copyright 1922 Belwin Inc.

61 (Action) LAWYER AND TWO MEN ARE SEENLAWYER THEME: Piccolo Pic (Slater) 4 Min.

Mod^{to}

Copyright 1918 C. Fischer.

62 (Title) I TAKE MY SLAVES OFFA Drowsy Afternoon (Lemont) 1/2 Min.

Ben cantando

Bayon

Bourville

Copyright 1919 Oliver Ditson

63 (Action) BEARDED MAN LURES CHILD Chiffonnette (Atherton) 1 1/4 Min.

Mod^{to}

Copyright 1925 G. Schirmer.

64 (Title) NOW YOU'RE GOING FOR A NICE LONG
 WALK Ruy Blas (Mendelssohn) 1/2 Min.

All^o

Copyright Carl Fischer.

65 (Action) FLASH-BACK TO SLEEPING MOTHER Stay In Your Old Back Yard (Udall) 3/4 Min.

Tenderly

NOTE: Start at figure (2)—play twelve measures and finish.

Copyright M. Witmark + Sons

66 (Action) ELIZA AWAKENS Feu Vengeur (Ourdine) 1 1/2 Min.

All^o

Copyright 1925 S. Chapelier.

67 (Title) MAMA! MAMA! In A Critical Situation (Becce) 2 Min.

Agitato

Copyright 1926 Schlesinger.

68 (Action) ELIZA FALLS TO KNEES IN ROAD Lamentoso (Drigo) 2 Min.

Mod^{to}

Copyright 1926 Carl Fischer.

69 (Action) CAPITOL DOME-SEEN Glory! Glory! Hallelujah 1 Min.

Mod^{to}

mf

Copyright Carl Fischer.

NOTE: Produce effect of shots.

INTERMISSION

70 (Title) THE ST. CLARE HOME IN NEW ORLEANS. EVA THEME: Rosaura (Burgmein) 3/4 Min.

And^{te}

pp

NOTE: Start at 3rd measure; play 8 measures—cut 4 measures—play 8 and close.

Copyright G. Schirmer.

71 (Action) INSERT—PROCLAMATION Glory! Glory! Hallelujah ½ Min.

Musical notation for item 71: INSERT—PROCLAMATION. Treble clef, 2/4 time, Mod^{to}, mf. Copyright: Carl Fischer.

72 (Action) TOM TAKES GLASS OF WATER..... Rosaura (Burgmein) ½ Min.

Musical notation for item 72: TOM TAKES GLASS OF WATER. Treble clef, 3/4 time, And^{te}, pp. Copyright: B. Schirmer.

73 (Action) AUNT CALLING TOPSY A Ticklish Tale (Finck) ½ Min.

Musical notation for item 73: AUNT CALLING TOPSY. Treble clef, 2/4 time, Not too fast, mf. Copyright: 1927 Hawkes + Son.

74 (Title) HE I IS Ole Virginny (Zamecnik) 1¼ Min.

Musical notation for item 74: HE I IS. Treble clef, 2/4 time, Mod^{to}, mf. Copyright: Sam Fox.

75 (Action) CLOSE-UP OF TOPSY TOPSY THEME: Lady Of My Heart (Roder) 1 Min.

Musical notation for item 75: CLOSE-UP OF TOPSY. Treble clef, 2/4 time, Mod^{to}, p. Copyright: 1927 Edwin F. Kalnus.

76 (Action) AUNT CALLING TOPSEE! TOPSEE! Aunt Call (Manuscript) ¼ Min.

Musical notation for item 76: AUNT CALLING TOPSEE! TOPSEE!. Treble clef, 2/4 time, Burlesque. Includes handwritten note "Cut out" with an arrow pointing to the first few notes.

77 (Title) I THINK MISS FEELY WANTS ME Scherzoso (Friml) 3 Min.

Musical notation for item 77: I THINK MISS FEELY WANTS ME. Treble clef, 2/4 time, Scherzoso, 8va. Copyright: 1927 Edwin F. Kalnus.

78 (Title) WHAT AM I GOING TO DO TOPSY THEME: Lady of My Heart (Roder) 2¼ Min.

Musical notation for item 78: WHAT AM I GOING TO DO. Treble clef, 2/4 time, Mod^{to}. Copyright: 1927 Edwin F. Kalnus.

79 (Action) TWO CHILDREN ALONE EVA THEME: Rosaura (Burgmein) 1¾ Min.

Musical notation for item 79: TWO CHILDREN ALONE. Treble clef, 2/4 time, And^{te} sostenuto. Copyright: G. Schirmer.

80 (Title) NOBODY LOVES NIGGERS The Florida Spiritual (Foulds) 2 Min.

Musical notation for item 80: NOBODY LOVES NIGGERS. Treble clef, 2/4 time, Slow, mf. Copyright: 1925 E. B. Marks.

81 (Action) TOPSY ALONE AT MIRROR WITH POWDER PUFF TOPSY THEME: Lady of My Heart (Roder) ¾ Min.

Grazioso
Musical notation for item 81, consisting of three staves of music in 2/4 time.

82 (Action) AUNT ENTERS ROOM A Southern Idyl (Baxter) 1 Min.

Allo mod^{to}
Musical notation for item 82, consisting of one staff of music in 2/4 time.

83 (Title) BUT THE LIGHT THAT TOUCHED It Is Night (Black) 1¼ Min.

And^{te}
Musical notation for item 83, consisting of one staff of music in 3/4 time.

84 (Action) FATHER ALONE AT BEDSIDE Lamento from Pique Dame (Tschaikowsky) ¾ Min.
NOTE: Play "BP" con sordini strings only, very ethereal.

And^{te}
Musical notation for item 84, consisting of one staff of music in 3/4 time.

85 (Title) AUGUSTINE ST. CLARE The Captive (Savino) 2½ Min.

Grave e sostenuto
Musical notation for item 85, consisting of one staff of music in 3/4 time.

86 (Title) SOLD TO LEGREE Tragico con Moto (Drigo's Cinema Classics) ½ Min.

Mod^{to}
Musical notation for item 86, consisting of one staff of music in 2/4 time.

87 (Title) ACROSS TWO STATES Sorter Miss You (Smith) ½ Min.

Broadly with expression
Musical notation for item 87, consisting of one staff of music in 2/4 time.

88 (Title) SIMON LEGREE'S PLANTATION Incid. Symphony No. 24 (Kempinski) 1 Min.

And^{te mod^{to}}
Musical notation for item 88, consisting of one staff of music in 3/4 time.

89 (Title) CASSIE FOR TWENTY YEARS Epilogue (Gabriel Marie) ¾ Min.

And^{te}
Musical notation for item 89, consisting of one staff of music in 3/4 time.

90 (Action) LEGREE LEAVES ELIZA Allegro Precipitoso (Savino) 1¼ Min.
NOTE: Play from letter (B) to (C) only.

All^o
Musical notation for item 90, consisting of one staff of music in 2/4 time.

91 (Title) WHAT DO YOU MEAN Intermezzo from "Sigurd Jorsalfar" (Grieg) ¾ Min.

Poco And^{te}
Musical notation for item 91, consisting of one staff of music in 3/4 time.

92 (Action) SCENE IN FRONT OF DOORDramatic Allegro (Savino)1½ Min

Musical notation for item 92, including treble and bass clefs, notes, rests, and dynamic markings like *All^o* and *pp*. Copyright: 1923 G. Schirmer.

93 (Title) AND THE TRAMP, TRAMP, TRAMPTramp, Tramp, Tramp½ Min

Musical notation for item 93, including treble clef, notes, rests, and dynamic markings like *Con spirito* and *mf*. Copyright: C. Fischer.

94 (Title) TERROR SPREADRomantique (Gabriel Marie)1 Min

Musical notation for item 94, including treble and bass clefs, notes, rests, and dynamic markings like *All^o Risoluto*. Copyright: 1927 S. Chapelier.

95 (Action) FLASH TO MARCHING TROOPSAround the Campfire (Seredy)1¼ Min

Battle Cry of Freedom

Musical notation for item 95, including treble clef, notes, rests, and dynamic markings like *All^o mod^o*. Copyright: 1918 C. Fischer.

NOTE: Finish on 8th measure after figure (6).
96 (Title) WHILE LEGREESilent Night (Rebikov)½ Min

Musical notation for item 96, including treble clef, notes, rests, and dynamic markings like *Largo* and *pp*. Copyright: 1917 G. Schirmer.

97 (Action) CASSIE ADMINISTERING TO UNCLE TOM..UNCLE TOM THEME: Southern Idyl (Stoessel)½ Min

Musical notation for item 97, including treble clef, notes, rests, and dynamic markings like *And^{te}* and *mp*.

Continuation of musical notation for item 97, including treble clef, notes, rests, and dynamic markings like *f*, *p*, and *pp*. Copyright: 1921 The Boston Music Co.

NOTE: Play "PP" con sordini strings only.
98 (Title) WHY MISSY, THAT WAS ELIZA'S STORY..Chanson Melancholique (Collinge)¾ Min

Musical notation for item 98, including treble clef, notes, rests, and dynamic markings like *And^{te}* and *pp*. Copyright: 1920 Belwin Inc.

99 (Action) CASSIE LEAVES TOMDramatic Conflict (Levy)2 Min.

Musical notation for item 99, including treble clef, notes, rests, and dynamic markings like *All^o* and *f*. Copyright: 1919 Belwin Inc.

100 (Title) GOOD LORD ALMIGHTYAppassionato No. 3 (Axt)1¼ Min

Musical notation for item 100, including treble clef, notes, rests, and dynamic markings like *Mod^o*. Copyright: 1926 Robbins Music Corp.

101 (Title) MOTHER! MOTHER!'Bama Coon (Lachau)½ Min

Musical notation for item 101, including treble clef, notes, rests, and dynamic markings like *And^{te} espress*. Copyright: 1926 American Composers.

NOTE: Play "PP" con sordini strings only, very plaintive.
102 (Action) FLASH-BACK TO LEGREEDramatic Conflict (Levy)2 Min.

Musical notation for item 102, including treble clef, notes, rests, and dynamic markings like *All^o* and *f*. Copyright: 1919 Belwin Inc.

103 (Action) LEGREE OUTSIDEThe Conspirators (Roder) 1/2 Min.

Agitato misterioso

Copyright 1927 Ed. F. Kalmus

104 (Action) SOLDIERS ARE SEENAround the Campfire (Seredy) 1/2 Min.

All^o mod^o

Copyright 1918 Carl Fischer

105 (Action) FLASH-BACK TO LEGREELe Seigneur de Kermor (Gabriel Marie) 1/2 Min.

And^{te} maestoso

Manus Music Co

106 (Action) WINDOWS SLAM SHUT BY WINDThe Skeleton (Roder) 1 Min.

Not too slow

Copyright 1927 Edwin F. Kalmus

107 (Action) UNCLE TOM BROUGHT INLe Volcan (Offenbach) 1 1/4 Min.

All^o

Copyright 1926 E. B. Marks Music Co

108 (Action) FLOGGING OF TOMThe Toilers (Axt) 1/2 Min.

Mod^o

Copyright 1926 Robbins Music Co

109 (Action) MARCHING SOLDIERSWe Are Coming, Father Abraham (Seredy) 1/4 Min

Mod^o

Copyright 1918 Carl Fischer

110 (Title) HE'S DONE FORUNCLE TOM THEME: Southern Idyl (Stoessel) 1/2 Min.

And^{te}

Copyright 1921 Boston Music Co

111 (Action) UNCLE TOM IS CARRIED OUTLargo from New World's Symphony (Dvorak) 1/4 Min.

Largo

Copyright 1912 Carl Fischer

NOTE: Play half tone lower; start on 5th measure after letter (A)—play 4 measures only—finish with Timpany Roll.

112 (Title) I FORGIVE YOUOld Black Joe (Foster) 1/2 Min.

Espressivo

Copyright Carl Fischer

113 (Action) FLASH-BACK TO LEGREESecret Court (Leuschner) 2 Min.

Mod^o

Copyright 1925 Hilbert Schaper

NOTE: Soft Timpany or Cymbal Roll for revolving wheel.

114 (Action) DOOR SLAMS Eruption (Dubensky) 2 3/4 Min

Musical notation for 114: *All^o* Eruption (Dubensky) Copyright 1927 G. & J. Lipskin

115 (Title) WELL, IF IT AIN'T NOTE: Produce effect of crashing door, etc.—weird wind whistling about. Andante Tragic (Levenson) 1/2 Min.

Musical notation for 115: *And^{te}* Well, if it ain't (Levenson) Copyright 1926 Belwin Inc.

116 (Action) LEGREE PLACES DOOR BACK IN PLACE—TROOPS MARCHING PAST Around the Campfire (Seredy) 3/4 Min

Musical notation for 116: *All^o molto* Around the Campfire (Seredy) Copyright 1918 Carl Fischer

117 (Action) CASSIE FIGHTING LEGREE Mob-Rule (Becca) 2 Min.

Musical notation for 117: *Agitato* Mob-Rule (Becca) Copyright 1926 Schlesinger

118 (Action) SOLDIERS STOP MARCHING NOTE: Taps on S. D. for effect of passing soldiers. Agitato No. 4 (Axt) 1/2 Min.

Musical notation for 118: *All^o* Soldiers Stop Marching (Axt) Copyright 1925 Robbins Music Co.

119 (Action) CLOSE-UP OF LEGREE Banquet Ghost (Leuschner) 3/4 Min.

Musical notation for 119: Banquet Ghost (Leuschner) Copyright 1925 Albert Schaper

120 (Action) OFFICER ORDERS ELIZA TO DESCEND NOTE: Timpany Roll for fall of Legree from window. Icare (Tremisot) 1/2 Min.

Musical notation for 120: *Molto maestoso* Icare (Tremisot) Manus Music Co

121 (Action) ELIZA RECOGNIZES CHILD *Nights Like a Rose* Mammy's Little Kinky Headed Boy (Trinkaus) 1/2 Min.

Musical notation for 121: *Tendresse* Mammy's Little Kinky Headed Boy (Trinkaus)

Musical notation for 122: Copyright 1926 M. Witmark & Sons

122 (Action) GEORGE SEES AND RECOGNIZES ELIZA...LOVE THEME: Ma Little Sun-Flow'r, Good-Night (Vanderpool) 1/2 Min.

Musical notation for 122: *Slow* Ma Little Sun-Flow'r, Good-Night (Vanderpool) Copyright 1919 Witmark & Sons

123 (Action) VISION OF MARCHING SOLDIERS Memories of the War (Laurendeau) 3/4 Min.

Musical notation for 123: *March* Memories of the War (Laurendeau) Copyright 1907 Carl Fischer

THE END

Complete orchestrations and single piano parts of each separate number contained herein, can be purchased from CAMBO MUSIC SERVICE CORPORATION, 315-317 WEST 6TH STREET, NEW YORK CITY.

95:2550:3