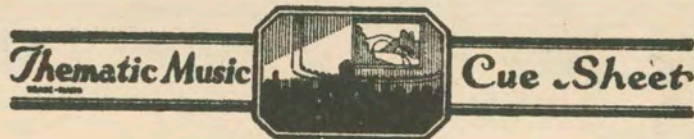


581



M. J. MINTZ (PATENT)
JULY 31, 1923.

FIRST NATIONAL PICTURES, INC.

presents

MILTON SILLS

in

"THE UNGUARDED HOUR"

with DORIS KENYON

Music compiled by Eugene Conte

A FIRST NATIONAL PICTURE

- 1 AT SCREENING Summer Evening (Mueller) 1½ Min.

Lento e morto

 Copyr. 1925, by Forster Music Pub. Co.

- 2 (Title) VIRGINIA GILBERT'S Brown Eyes—Why Are You Blue (Meyer) 2½ Min

Mod.to

 Copyr. 1925, by Henry Waterson.

- 3 (Action) ARGUMENT STARTS Incid. Symphony No. 28 (Damaur) ½ Min.

All. furioso

 Copyr. 1925, by Photo Play Music Co.

- 4 (Title) RUSSEL VAN Follow the Swallow (Henderson) ½ Min.

For foot

 Copyr. 1925, by Photo Play Music Co.

- 5 (Action) RUSSEL AND VIRGINIA ALONE Corinne (Kay) 1½ Min.

And.te Amoroso

 Copyr. 1925, by Forster Music Co.

- 6 (Action) FADE-BACK TO PARTY Oh Baby (Donaldson) ½ Min.

Jazz

 Copyr. 1923, by Irving Berlin.

- 7 (Action) TWO CROOKS ALONE Enigma (Borch) 1½ Min.

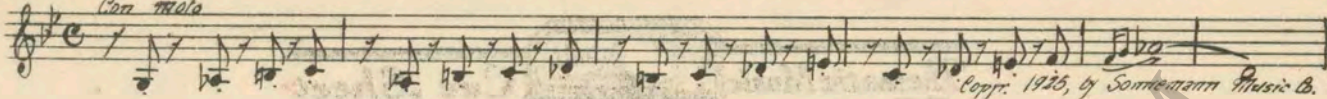

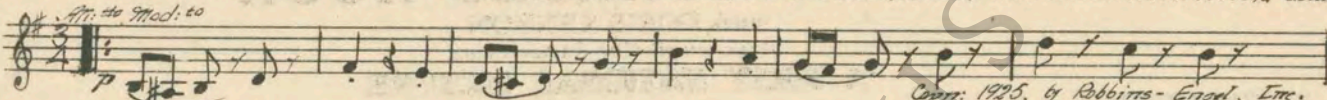
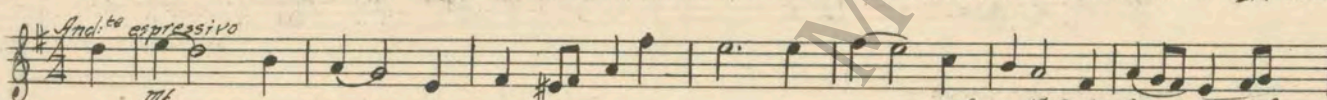
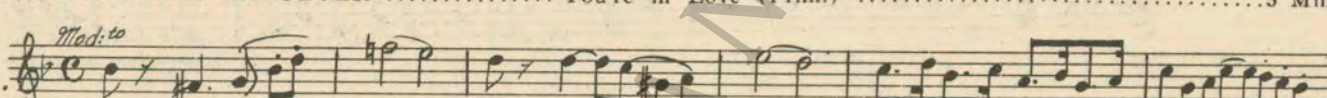
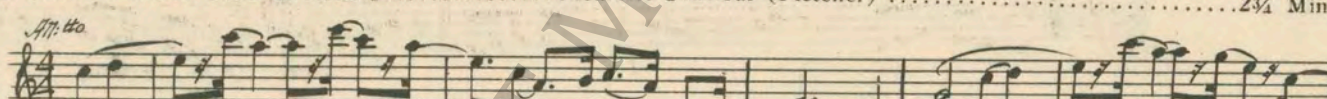

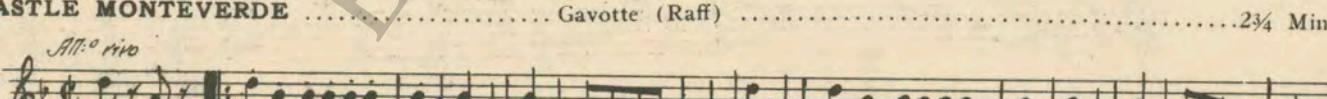
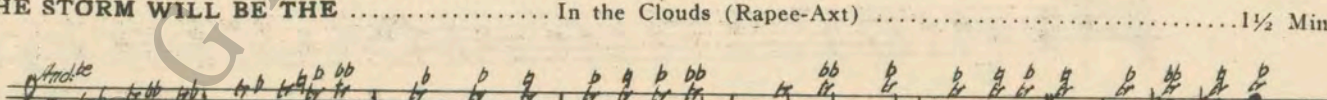
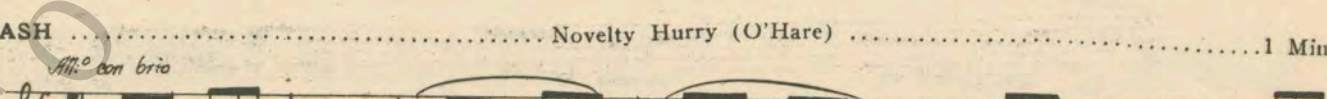
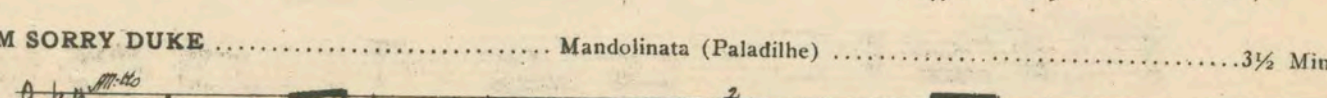
Molto

 Copyr. 1922, by Hawkes & Son.

- 8 (Action) CLOSE-UP OF RUSSEL First Call of Spring (Smith) 3 Min

All. to crescioso

 Copyr. 1924, by Belwin, Inc.

- 9 (Action) **POLICE ENTER** Pursuit (Breil) 1½ Min.
Con moto

 Coppr. 1925, by Sommermann Music Co.
- 10 (Title) **ONE OF GUESTS—COCK-EYED** Agitato No. 1 (Rapee-Axt) 1¼ Min.
All.^o

 Coppr. 1925, by Robbins-Engel, Inc.
- 11 (Action) **FADE-BACK TO VIRGINIA AND FATHER**... Second Misterioso a la Valse (Savino) 1¼ Min.
All.^o Mod.^{to}

 Coppr. 1925, by Robbins-Engel, Inc.
- 12 (Action) **RUSSEL LEAVES ROOM** Tender Appeal (Byford) 1¼ Min.
And.^{te} espressivo

 Coppr. 1915, by Bosworth & Co.
- 13 (Action) **VIRGINIA TAKES REVOLVER** You're in Love (Friml) 3 Min.
Mod.^{to}

 Coppr. 1911, by G. Schirmer.
- 14 (Title) **SO THAT'S HOW YOU SPEND** Fleurette d'Amour (Fletcher) 2¾ Min.
All.^o Mod.^{to}

 Coppr. 1922, by Hawkes & Son.
- 15 (Action) **RUSSEL IN HALL** Early Roses (Baron) 2¼ Min.
All.^{te} scherzando

 Coppr. 1925, by Belwin, Inc.
- 16 (Title) **CASTLE MONTEVERDE** Gavotte (Raff) 2¾ Min.
All.^o vivo

 Coppr. 1912, by G. Schirmer.
- 17 (Title) **THE STORM WILL BE THE** In the Clouds (Rapee-Axt) 1½ Min.
And.^{te}

 Coppr. 1924, by Robbins-Engel, Inc.
- 18 (Action) **CRASH** Novelty Hurry (O'Hare) 1 Min.
All.^o con brio

 Coppr. 1920, by Oliver Ditson Comp.
- 19 (Title) **I'M SORRY DUKE** Mandolinata (Paladilhe) 3½ Min.
All.^{te}

 Coppr. 1922, by Carl Fischer.

✓ 20 (Title) **THESE AMERICAN GIRLS** Peg (Hauenschild) 2½ Min.

All. to Mod. to
 Musical notation for 'THESE AMERICAN GIRLS' in treble clef, 2/4 time, key of D major. It begins with a piano (p) dynamic and a tempo marking of 'All. to Mod. to'. The melody consists of eighth and sixteenth notes.
Copr. 1922, by Photo Play Music

✓ 21 (Title) **ELENA D'ORORA** Serenade (Toselli) 2 Min.

All. to Graz.
 Musical notation for 'ELENA D'ORORA' in treble clef, 3/4 time, key of D major. It begins with a piano (p) dynamic and a tempo marking of 'All. to Graz.'. The melody features a mix of eighth and quarter notes.
Copr. 1923, by The Boston Music Co.

✓ 22 (Action) **ANDREA TYPING** Forget Me Not (Macheth) 1½ Min.

All. to
 Musical notation for 'ANDREA TYPING' in treble clef, 2/4 time, key of D major. It begins with a mezzo-forte (mf) dynamic and a tempo marking of 'All. to'. The melody is composed of eighth and quarter notes.
Copr. 1913, by Carl Fischer.

✓ 23 (Action) **VIRGINIA CRIES FOR HELP** Scherzo (Mendelssohn) 1 Min.

All. to Krace
 Musical notation for 'VIRGINIA CRIES FOR HELP' in treble clef, 2/4 time, key of D major. It begins with a piano (pp) dynamic and a tempo marking of 'All. to Krace'. The melody is characterized by sixteenth-note patterns.
Copr. 1922, by G. Schirmer.

✓ 24 (Action) **VIRGINIA RESCUED** Miss Blue-Eyes (Bergh) 3 Min.

All. to
 Musical notation for 'VIRGINIA RESCUED' in treble clef, 2/4 time, key of D major. It begins with a mezzo-forte (mf) dynamic and a tempo marking of 'All. to'. The melody consists of eighth and quarter notes.
Copr. 1923, by Belwin, Inc.

✓ 25 (Action) **ELENA FALLS INTO WATER** Repeat No. 18 "Novelty Hurry" 1 Min.

All. to con bris
 Musical notation for 'ELENA FALLS INTO WATER' in treble clef, 2/4 time, key of D major. It begins with a piano (p) dynamic and a tempo marking of 'All. to con bris'. The notation shows a few notes followed by a double bar line, indicating a repeat.
Copr. 1920, by Belwin, Inc.

✓ 26 (Action) **ELENA RESCUED** Chanson Melancholique (Collinge) ½ Min.

And. to
 Musical notation for 'ELENA RESCUED' in treble clef, 3/4 time, key of D major. It begins with a piano (p) dynamic and a tempo marking of 'And. to'. The melody is composed of quarter and eighth notes.
Copr. 1920, by Belwin, Inc.

✓ 27 (Title) **FOR ONE WHO DOES NOT** Fragrance of Spring (Sanders) 3 Min.

All. to
 Musical notation for 'FOR ONE WHO DOES NOT' in treble clef, 2/4 time, key of D major. It begins with a piano (p) dynamic and a tempo marking of 'All. to'. The melody features eighth and quarter notes.
Copr. 1921, by Belwin, Inc.

✓ 28 (Action) **FADE-OUT OF VIRGINIA'S FATHER** Pomone (Waldteufel) 2½ Min.

Valse
 Musical notation for 'FADE-OUT OF VIRGINIA'S FATHER' in treble clef, 3/4 time, key of D major. It begins with a piano (p) dynamic and a tempo marking of 'Valse'. The melody consists of quarter and eighth notes.
Copr. by Emil Clacher.

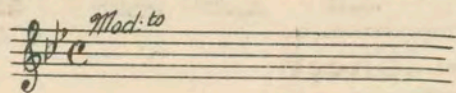
✓ 29 (Action) **ANDREA AND VIRGINIA ALONE** THEME: The Song of Songs (DeMoya) 1½ Min.

Mod. to
 Musical notation for 'ANDREA AND VIRGINIA ALONE' in treble clef, 2/4 time, key of D major. It begins with a mezzo-forte (mf) dynamic and a tempo marking of 'Mod. to'. The melody is composed of eighth and quarter notes.
Copr. 1914, by Chappell & Co.

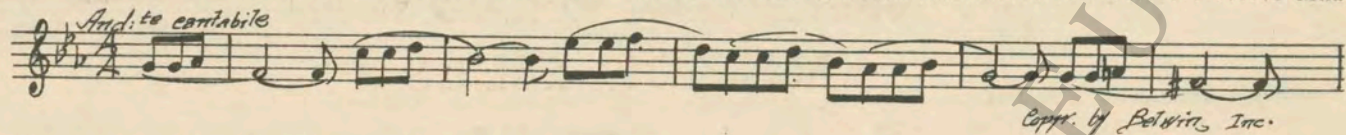
✓ 30 (Action) **VIRGINIA LEAVES ANDREA** Magic Love (Bradford) 1½ Min.

Valse lento
 Musical notation for 'VIRGINIA LEAVES ANDREA' in treble clef, 3/4 time, key of D major. It begins with a piano (p) dynamic and a tempo marking of 'Valse lento'. The melody consists of quarter and eighth notes.
Copr. 1925, by Sam Fox Pub. Co.

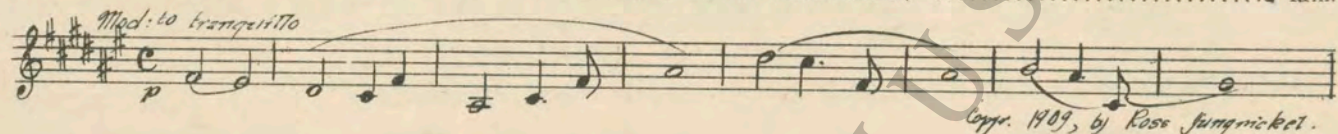
31 (Action) VIRGINIA OPENS BALCONY WINDOWS Repeat Theme No. 29 2 Min.



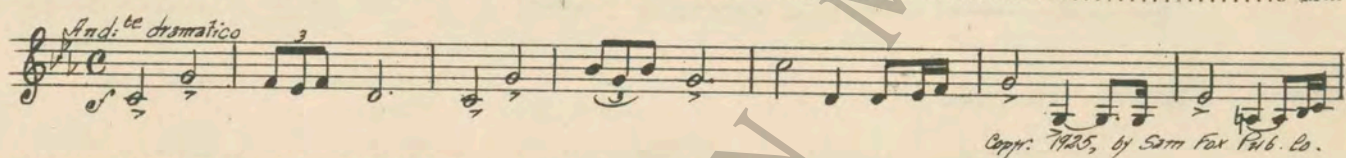
32 (Action) VIRGINIA LEAVES BALCONY Mon Amour (Baron) 3 Min.



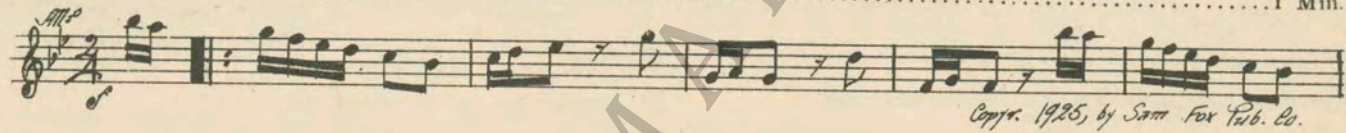
33 (Action) VIRGINIA LEAVES ROOM Kamenoi Ostrow (Rubenstein) 2 Min.



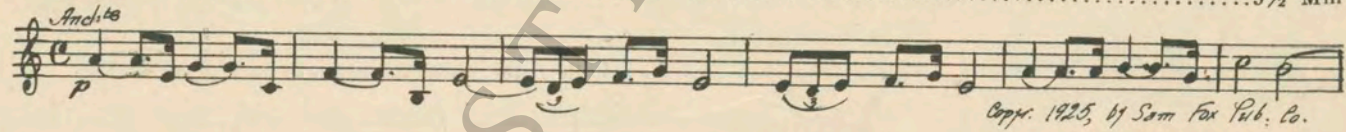
34 (Title) STELIO Cup of Bitterness (Zamecnik) 3 Min



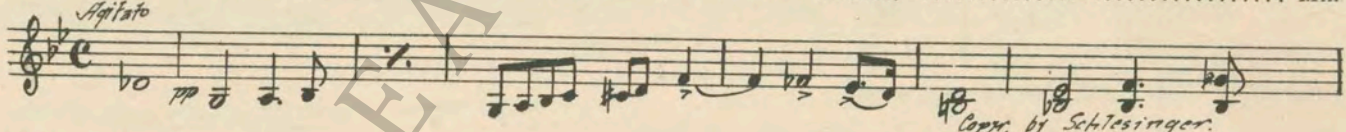
35 (Action) COUNTESS RECEIVES TELEGRAM Jollity (Zamecnik) 1 Min.



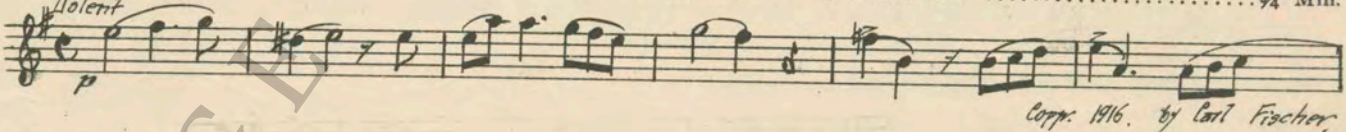
36 (Action) STELIO ENTERS VIRGINIA'S ROOM Despised (Zamecnik) 3 1/2 Min



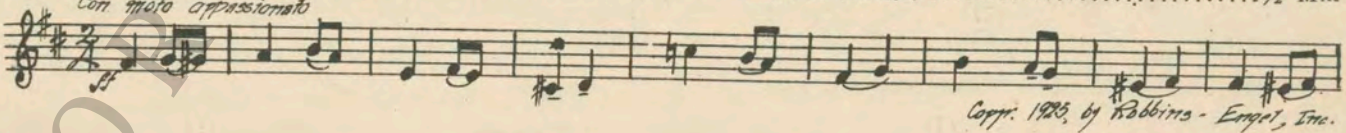
37 (Action) MAID OPENS DOOR—ANDREA ENTERS Situazione Pericolosa (Bece) 4 Min



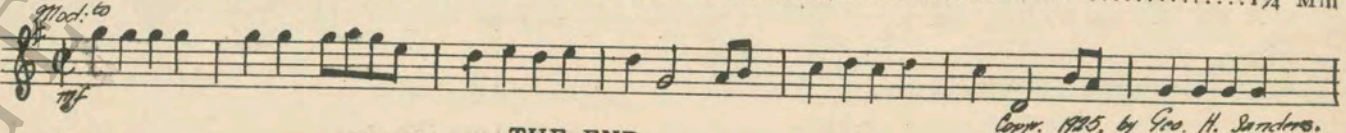
38 (Action) ANDREA SEES ELENA'S BODY Lamento (Gabriel-Marie) 3/4 Min.



39 (Action) ANDREA ENTERS STELIO'S ROOM Appassionato Dramatico (Bergé) 1 1/2 Min



40 (Action) EXTERIOR—VIRGINIA AND ANDREA The Show-Off (Sanders) 1 1/4 Min



Country of Origin, U. S. A.

THE END

Complete Orchestrations and single parts of all compositions contained herein can be purchased from CAMEO MUSIC SERVICE CORPORATION, 112-118 West 44th Street, New York City

95:2553:1